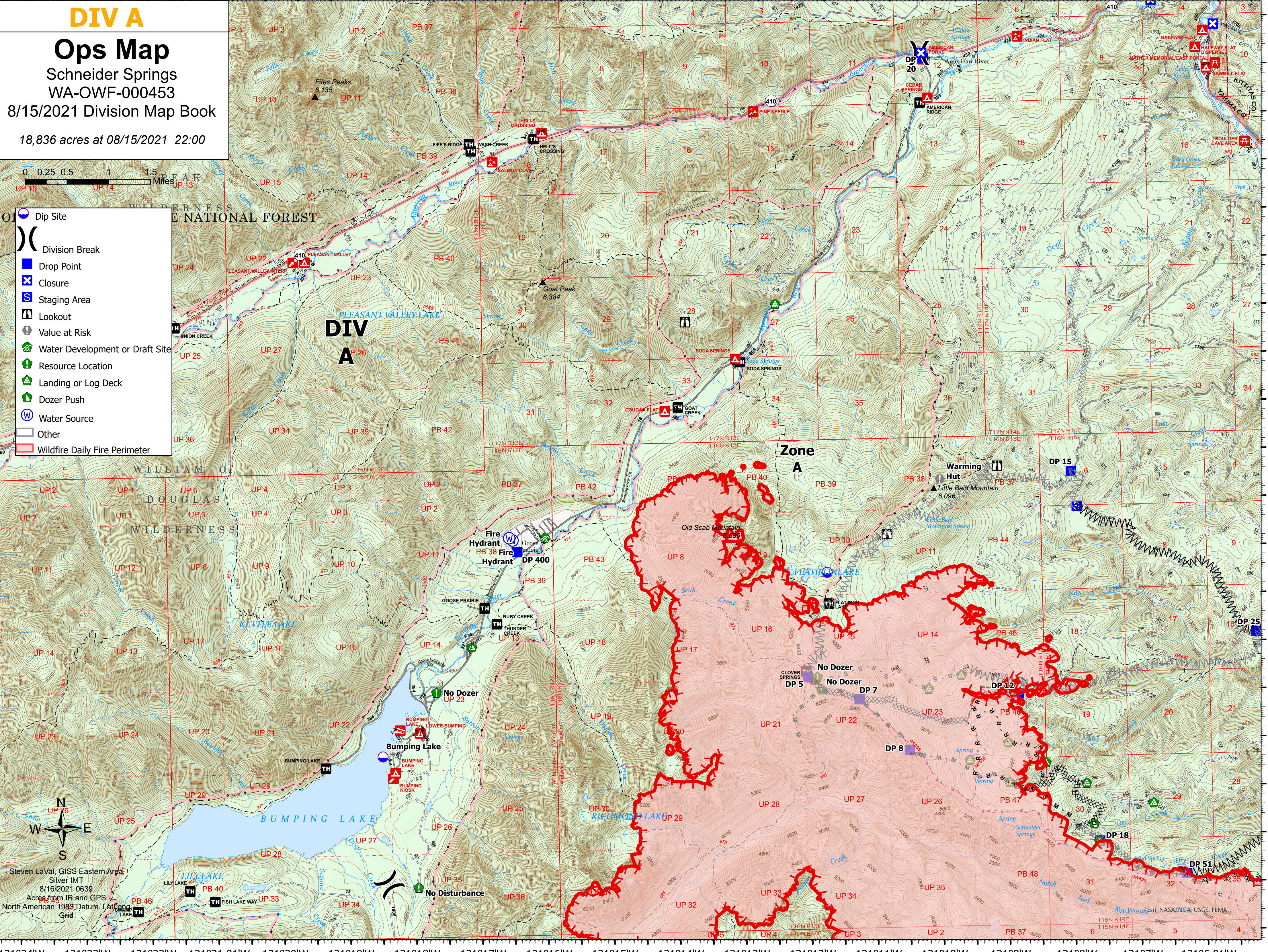


DIV A
Ops Map
 Schneider Springs
 WA-OWF-000453
 8/15/2021 Division Map Book
 18,836 acres at 08/15/2021 22:00



- Dip Site
- Division Break
- Drop Point
- Closure
- Staging Area
- Lookout
- Value at Risk
- Water Development or Draft Site
- Resource Location
- Landing or Log Deck
- Dozer Push
- Water Source
- Other
- Wildfire Daily Fire Perimeter

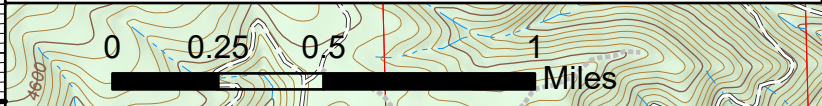


Steven LaVal, GISS Eastern Area
 Silver IMT
 8/16/2021 0639
 Acres from IR and GPS
 North American 1983 Datum, Lat/Long
 Grid

DIV M

Ops Map

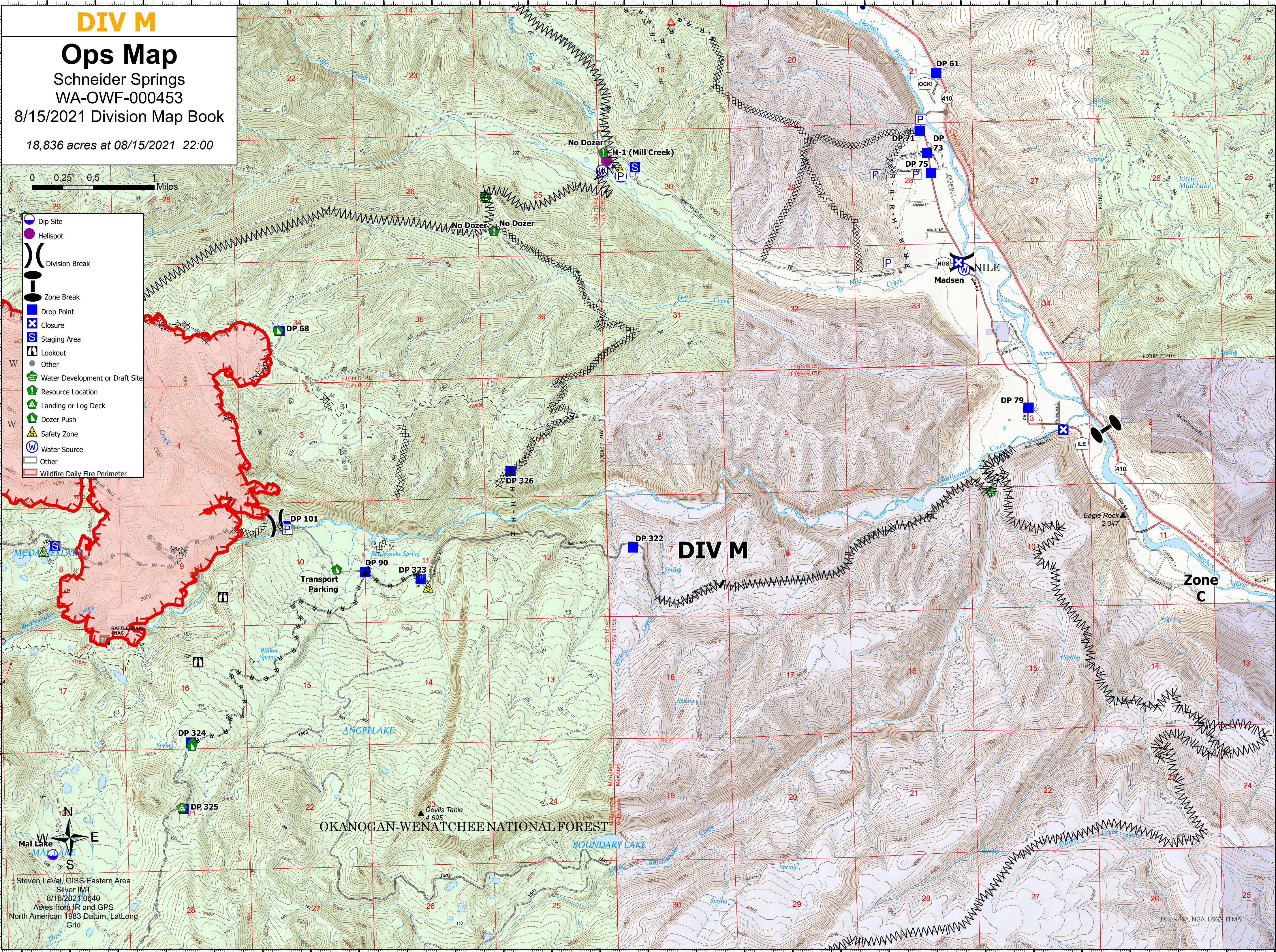
Schneider Springs
WA-OWF-000453
8/15/2021 Division Map Book
18,836 acres at 08/15/2021 22:00



- Dip Site
- Helispot
- Division Break
- Zone Break
- Drop Point
- Closure
- Staging Area
- Lookout
- Other
- Water Development or Draft Site
- Resource Location
- Landing or Log Deck
- Dozer Push
- Safety Zone
- Water Source
- Other
- Wildfire Daily Fire Perimeter

Steven LaVal, GISS Eastern Area
Silver IMT
8/16/2021 0640
Acres from IR and GPS
North American 1983 Datum, LatLong Grid

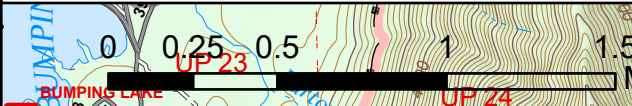
121°7'W 121°6.5'W 121°5.5'W 121°5'W 121°4.5'W 121°4'W 121°3.5'W 121°3'W 121°2.5'W 121°2'W 121°1.5'W 121°1'W 121°0.5'W 121°W 120°59.5'W 120°58.51'W 120°57.5'W 120°56.5'W 120°55.5'W 120°54.5'W



DIV Z

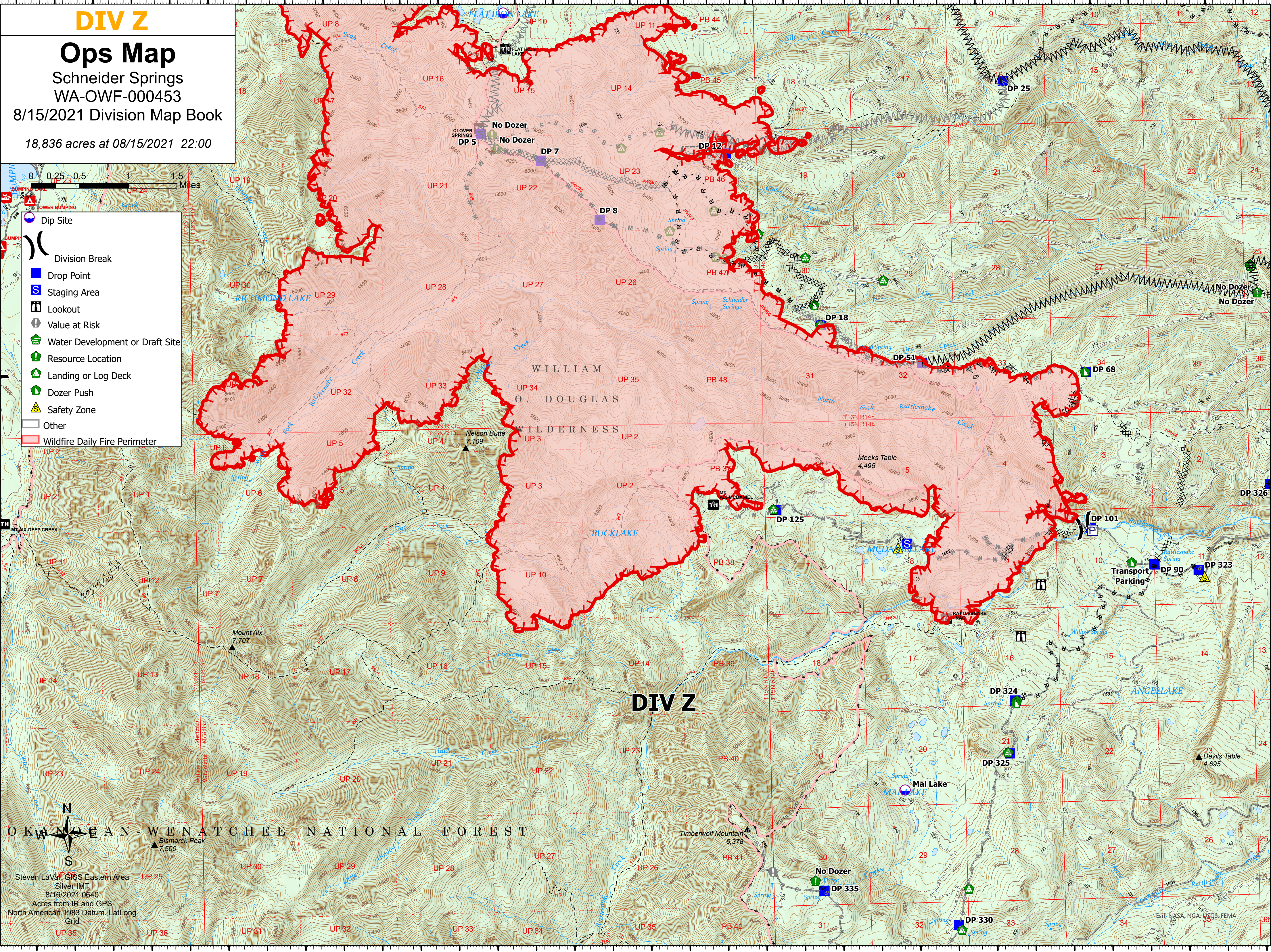
Ops Map

Schneider Springs
WA-OWF-000453
8/15/2021 Division Map Book
18,836 acres at 08/15/2021 22:00



- Dip Site
- Division Break
- Drop Point
- Staging Area
- Lookout
- Value at Risk
- Water Development or Draft Site
- Resource Location
- Landing or Log Deck
- Dozer Push
- Safety Zone
- Other
- Wildfire Daily Fire Perimeter

Steven Laval, GIS Eastern Area
Silver IMT
8/16/2021 0640
Acres from IR and GPS
North American 1983 Datum, Lat/Long
Grid



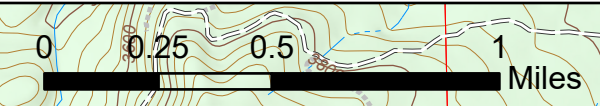
DIV D

Ops Map

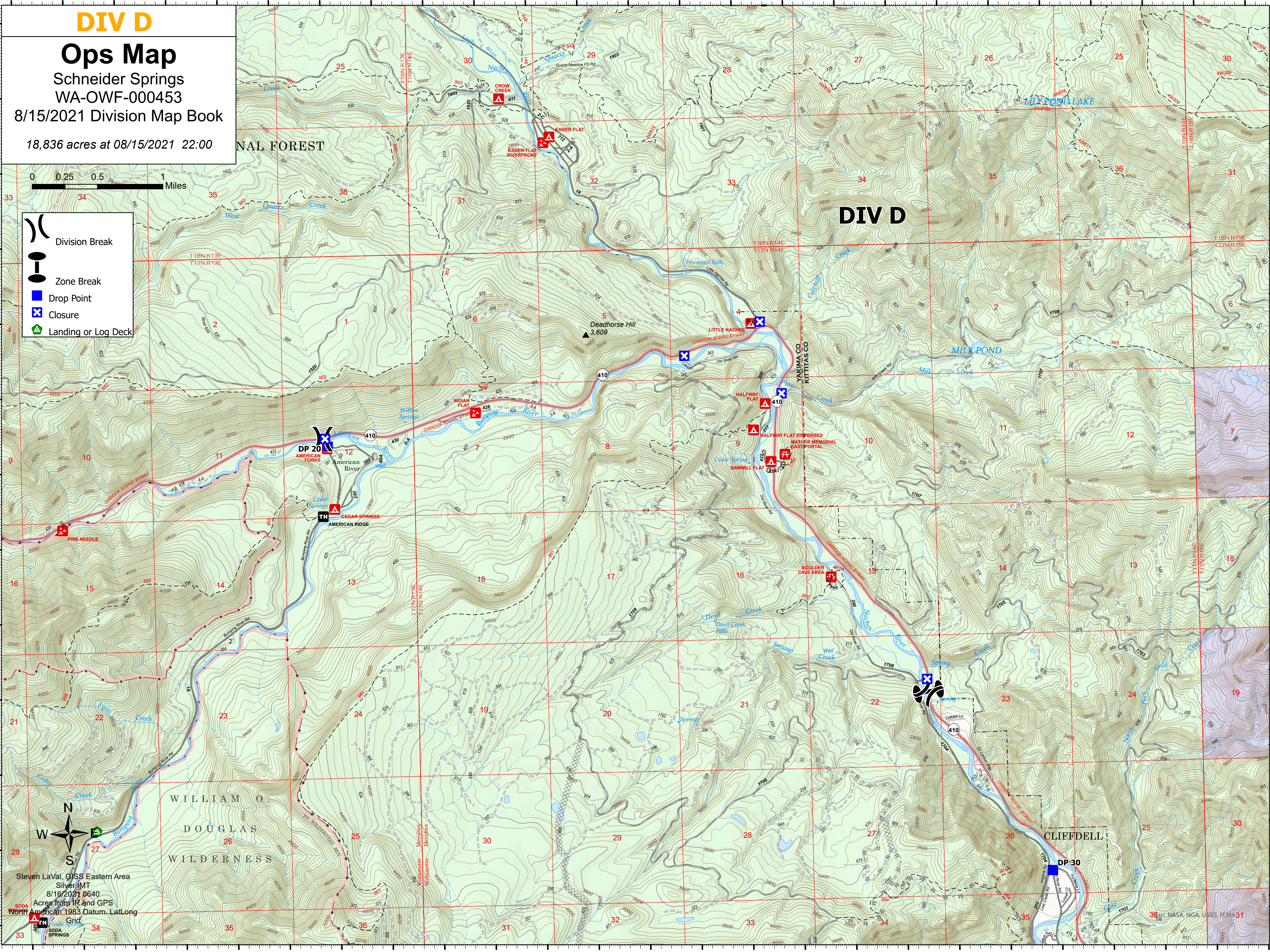
Schneider Springs
WA-OWF-000453

8/15/2021 Division Map Book

18,836 acres at 08/15/2021 22:00



- Division Break
- Zone Break
- Drop Point
- Closure
- Landing or Log Deck



WILLIAM O
DOUGLAS
WILDERNESS

CLIFFDELL

Steven LaVal, GIS Eastern Area
Silver, MT
8/16/2021 0640
Acres from 1R and GPS
North American 1983 Datum, LatLong
Grid

121°13'W 121°12.5'W 121°12'W 121°11.5'W 121°11'W 121°10.5'W 121°10'W 121°9.5'W 121°9'W 121°8.5'W 121°8'W 121°7.5'W 121°7'W 121°6.5'W 121°5.5'W 121°5'W 121°4.5'W 121°4'W 121°3.5'W 121°3'W 121°2.5'W 121°2'W 121°1.5'W 121°1'W

47°1.49'N
47°1'N
47°0.5'N
47°0'N
46°59.5'N
46°59'N
46°58.5'N
46°58'N
46°57.5'N
46°57'N
46°56.5'N
46°56'N
46°55.5'N

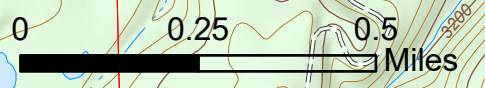
47°1'N
47°0.5'N
47°0'N
46°59.5'N
46°59'N
46°58.5'N
46°58'N
46°57.5'N
46°57'N
46°56.5'N
46°56'N
46°55.5'N

DIV F

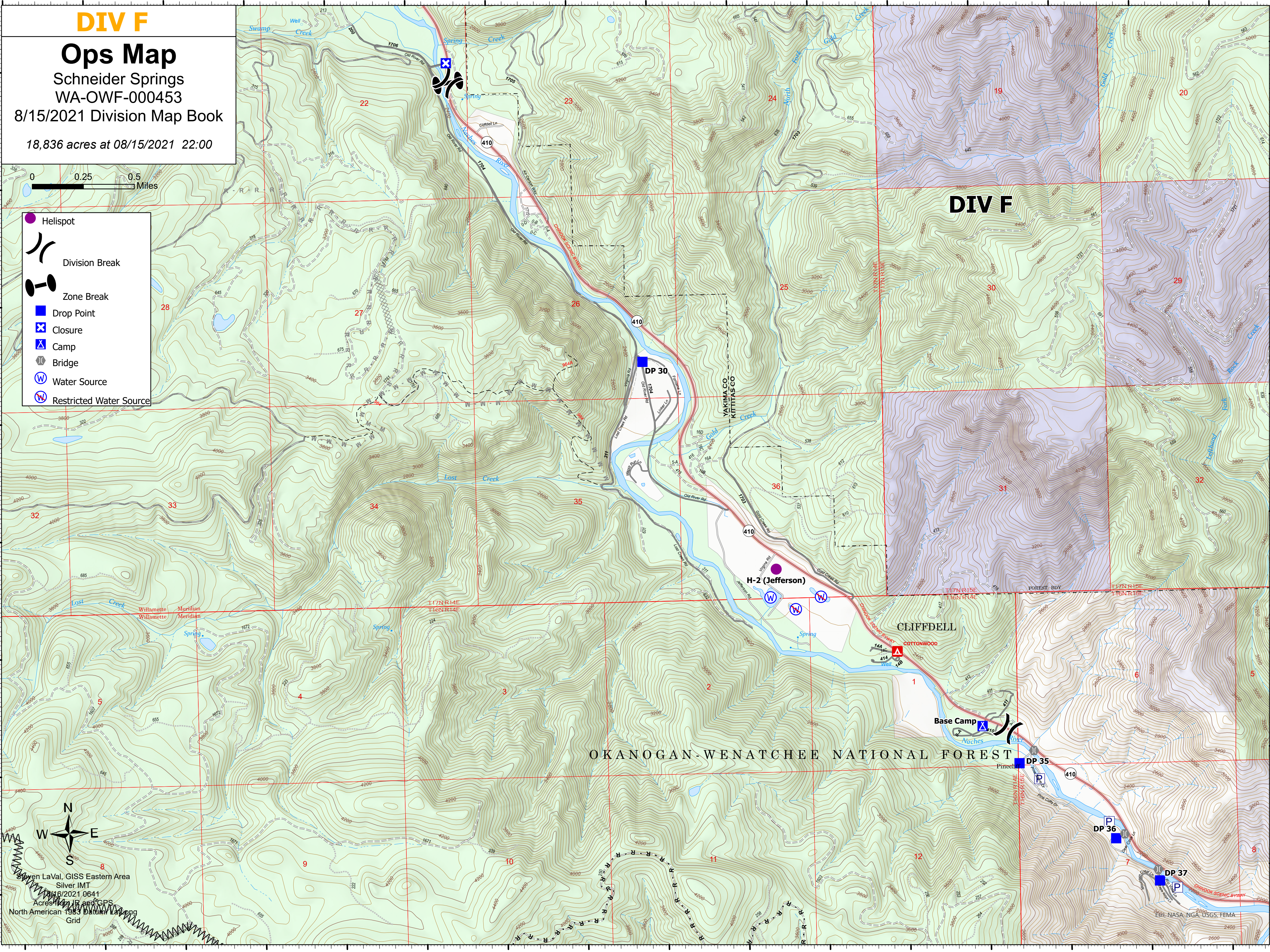
Ops Map

Schneider Springs
WA-OWF-000453
8/15/2021 Division Map Book

18,836 acres at 08/15/2021 22:00



- Helispot
- Division Break
- Zone Break
- Drop Point
- Closure
- Camp
- Bridge
- Water Source
- Restricted Water Source



North Arrow

Steven LaVal, GIS Eastern Area
Silver IMT
8/16/2021 0641
Acres from IR and GPS
North American 1983 Datum
Grid

ESRI, NASA, NGA, USGS, FEMA

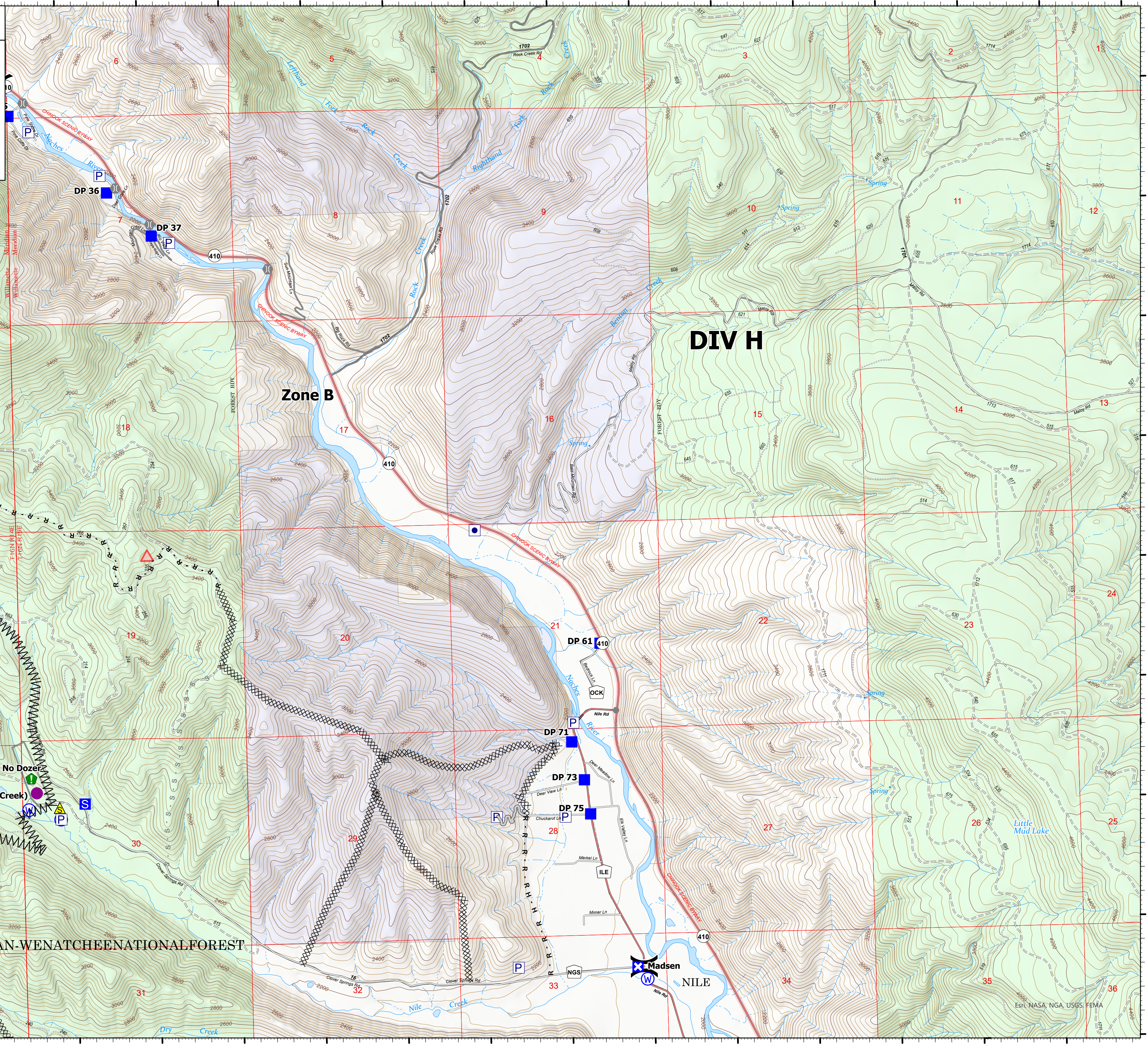
DIV H

Ops Map

Schneider Springs
WA-OWF-000453
8/15/2021 Division Map Book
18,836 acres at 08/15/2021 22:00



- Helispot
- Division Break
- Drop Point
- Closure
- Camp
- Staging Area
- Other
- Bridge
- Resource Location
- Landing or Log Deck
- Dozer Push
- Safety Zone
- Water Source
- Other
- Wildfire Daily Fire Perimeter



Steven LaVal, GIS Eastern Area
Silver IMT
8/16/2021 0641
Acres from IR and GPS
North American 1983 Datum, LatLong
Grid

OKANOGAN-WENATCHEE NATIONAL FOREST

DIV H

Zone B

Madsen

NILE

No Dozer

H-1 (Mill Creek)

No Dozer

No Dozer