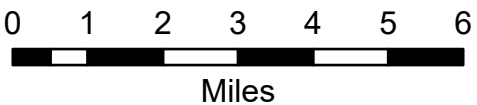


Transportation Map Index

Schneider Springs
WAOWF-000453
8/16/2021

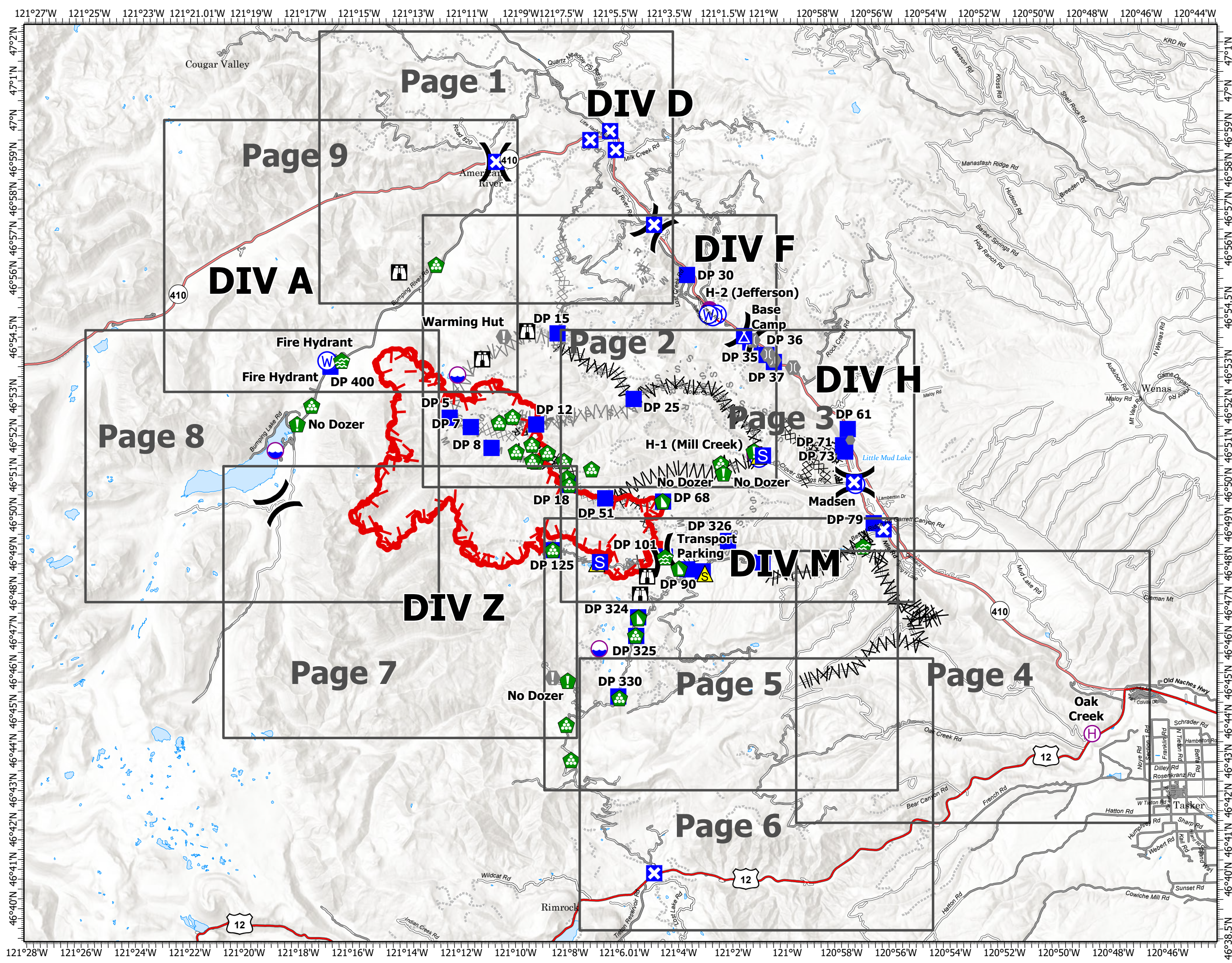
16,516 acres at 8/14/2021



- Dip Site
- Helispot
- Helibase
- Division Break
- Drop Point
- Closure
- Camp
- Staging Area
- Lookout
- Value at Risk
- Other
- Bridge
- Water Development or Draft Site
- Resource Location
- Landing or Log Deck
- Dozer Push
- Safety Zone
- Water Source
- Restricted Water Source
- Completed Dozer Line
- Completed Fuel Break
- Completed Hand Line
- Completed Mixed Construction Line
- Completed Road as Line
- Planned Dozer Line
- Planned Fuel Break
- Planned Mixed Construction Line
- Planned Road as Line
- Planned Secondary Line
- Access or Improved Road
- Other
- Fire Edge
- Grid Index



DBurbank
8/15/2021 1655
Acres from IR
North American 1983 Datum.
Lat/Long Grid

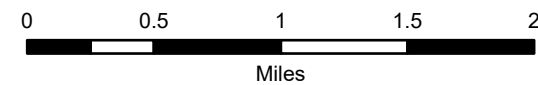


Transportation Map

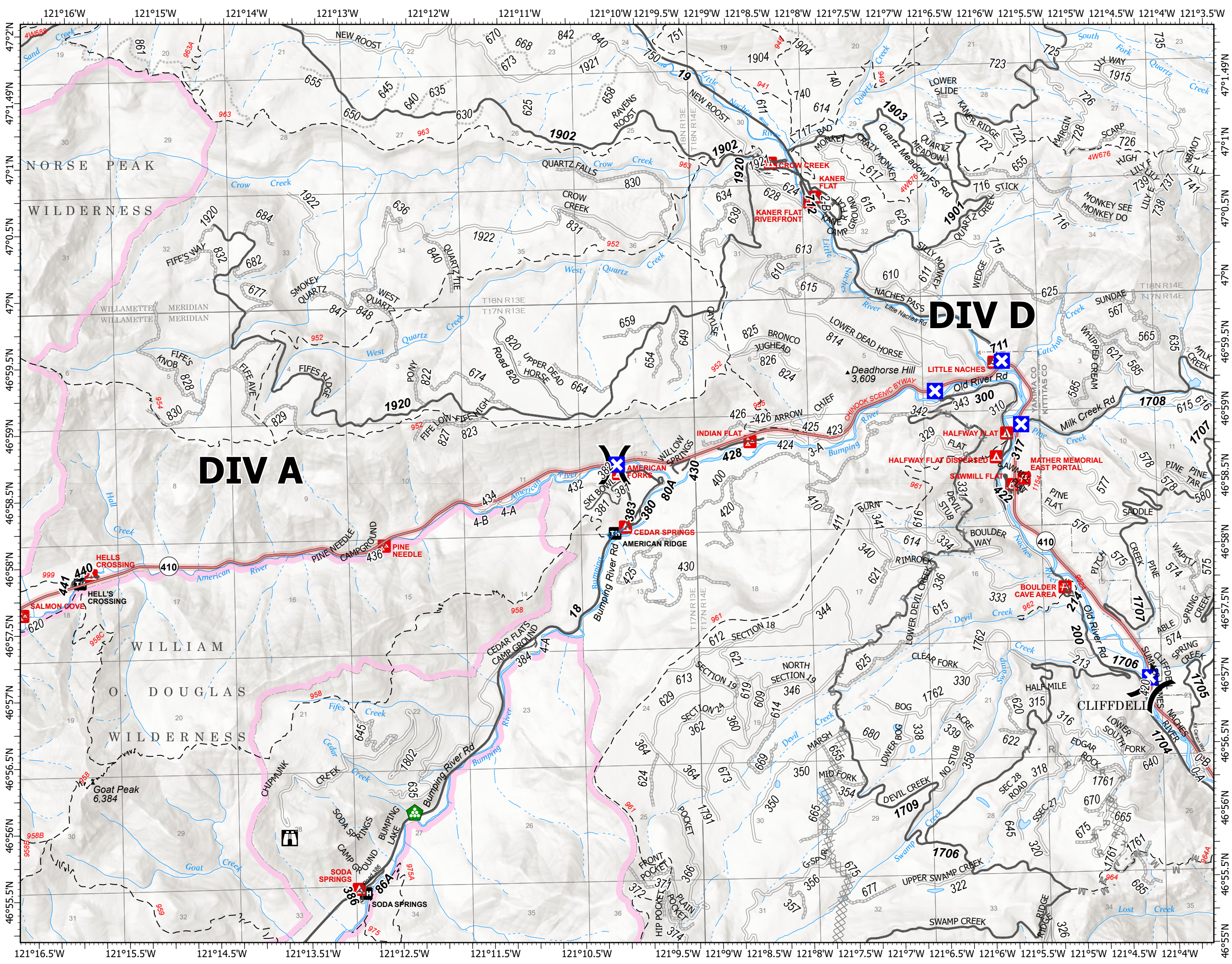
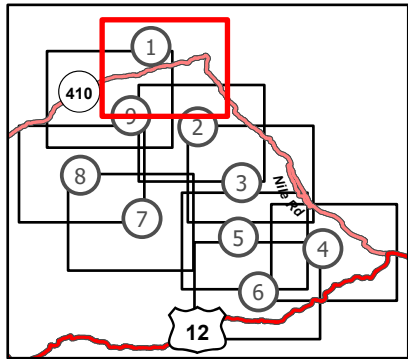
Schneider Springs
WAOWF-000453
8/16/2021

16,516 acres at 8/14/2021

Page 1 of 9



- (X) Division Break
- ⊠ Closure
- 🏠 Lookout
- 🌲 Landing or Log Deck
- ⊗ Planned Dozer Line
- M - Planned Mixed Construction Line
- R - Planned Road as Line
- 🟩 Administrative FS Boundary
- 🟪 FS Wilderness Boundary

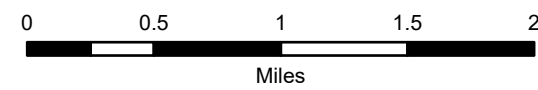


Transportation Map

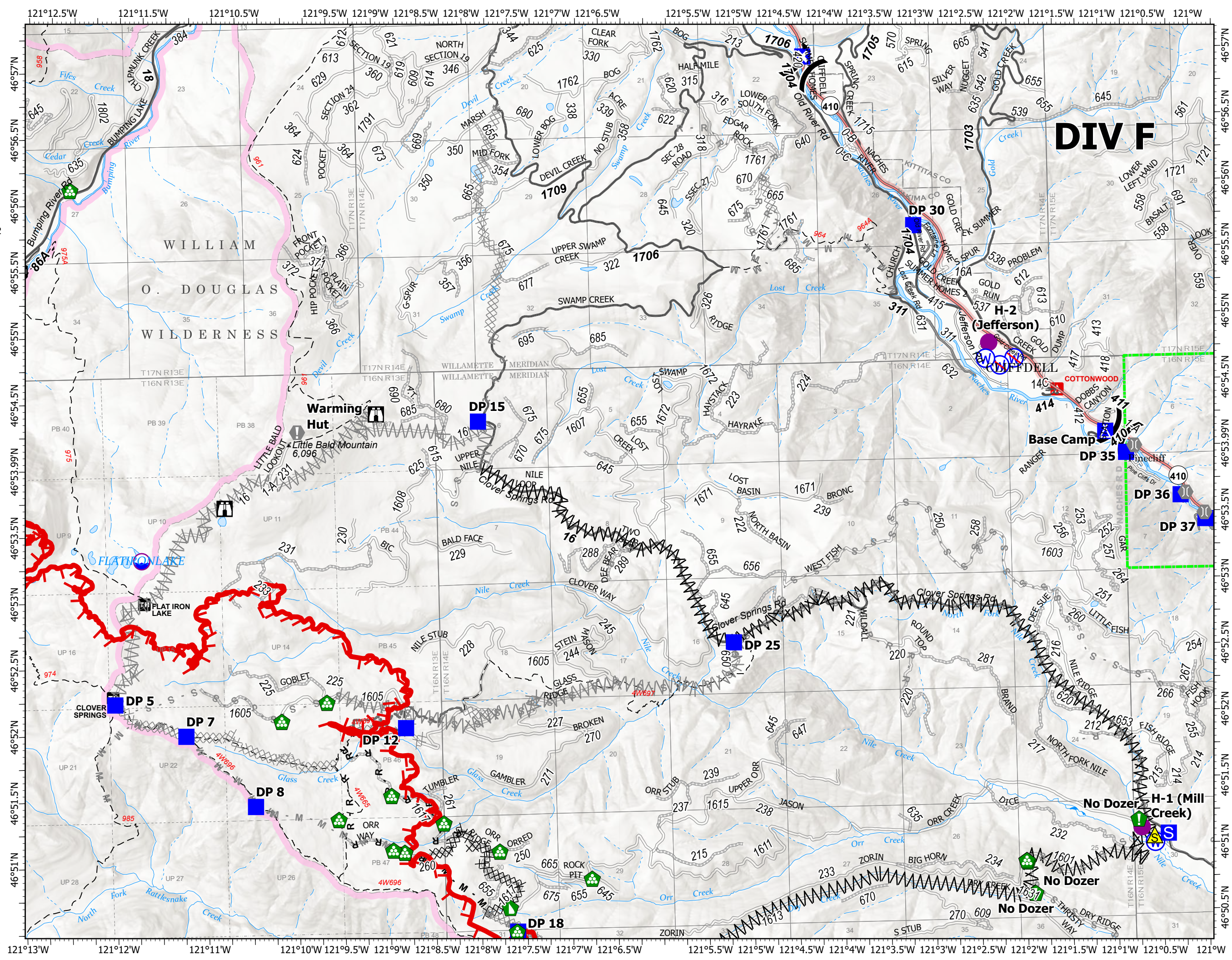
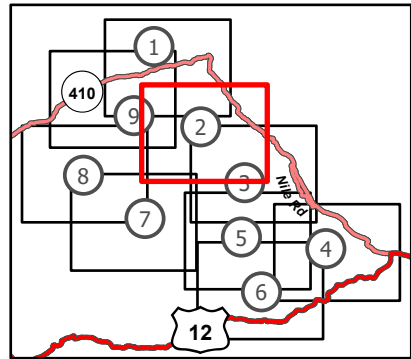
Schneider Springs
WAOWF-000453
8/16/2021

16,516 acres at 8/14/2021

Page 2 of 9



- Dip Site
- Helispot
- Division Break
- Drop Point
- Closure
- Camp
- Staging Area
- Lookout
- Value at Risk
- Bridge
- Resource Location
- Landing or Log Deck
- Dozer Push
- Safety Zone
- Water Source
- Restricted Water Source
- Completed Dozer Line
- Completed Fuel Break
- Completed Mixed Construction Line
- Completed Road as Line
- Planned Dozer Line
- Planned Fuel Break
- Planned Mixed Construction Line
- Planned Road as Line
- Planned Secondary Line
- Other
- Fire Edge
- Administrative FS Boundary
- FS Wilderness Boundary



DIV F

H-2 (Jefferson)

Base Camp

No Dozer H-1 (Mill Creek)

No Dozer

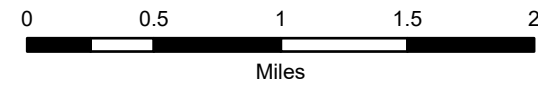
No Dozer

Transportation Map

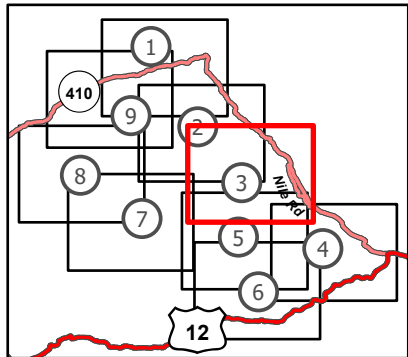
Schneider Springs
WAOWF-000453
8/16/2021

16,516 acres at 8/14/2021

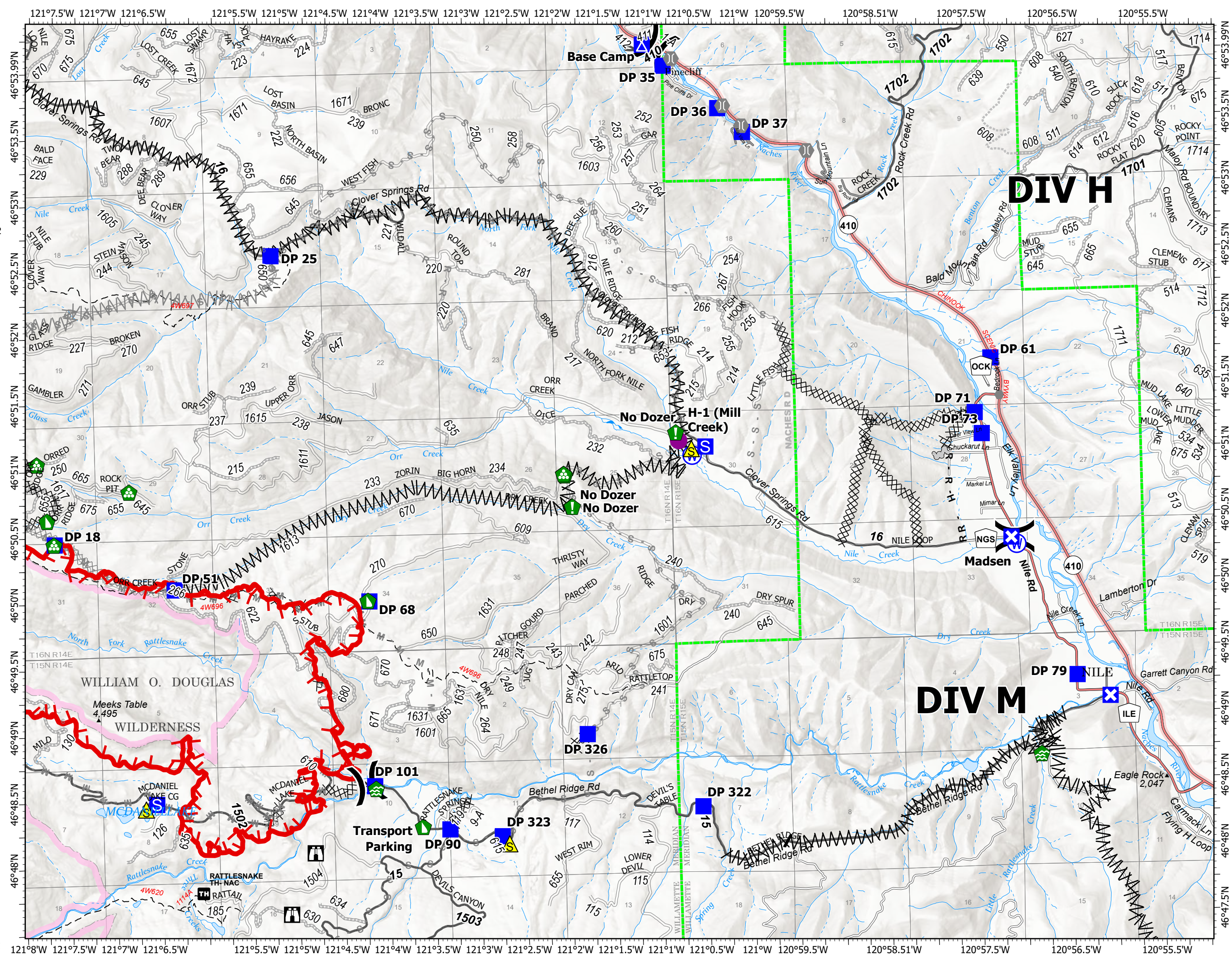
Page 3 of 9



- Helispot
- () Division Break
- Drop Point
- ⊠ Closure
- ⊠ Camp
- ⊠ Staging Area
- ⊠ Lookout
- Other
- Bridge
- ⊠ Water Development or Draft Site
- ⊠ Resource Location
- ⊠ Landing or Log Deck
- ⊠ Dozer Push
- ⚠ Safety Zone
- ⊠ Water Source
- ⊠ Completed Dozer Line
- ⊠ Completed Fuel Break
- ⊠ Completed Hand Line
- ⊠ Completed Mixed Construction Line
- ⊠ Completed Road as Line
- ⊠ Planned Dozer Line
- ⊠ Planned Fuel Break
- ⊠ Planned Mixed Construction Line
- ⊠ Planned Road as Line
- ⊠ Planned Secondary Line
- ⊠ Access or Improved Road
- ⊠ Fire Edge
- ⊠ Administrative FS Boundary
- ⊠ FS Wilderness Boundary



8/15/2021 1636
Acres from IR
North American 1983 Datum.
Lat/Long Grid

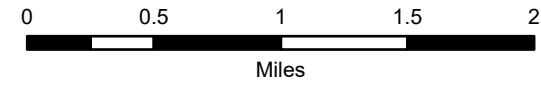


Transportation Map

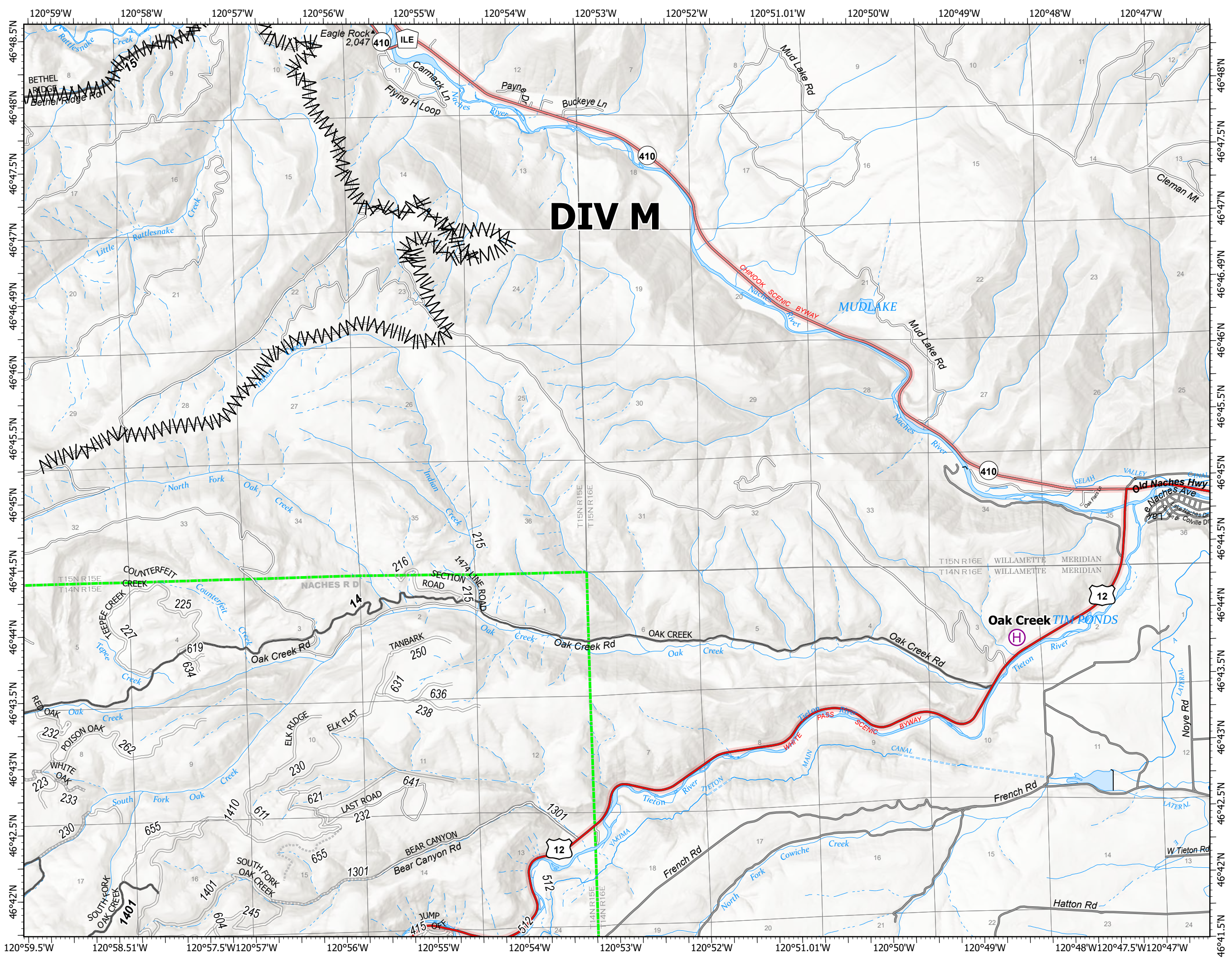
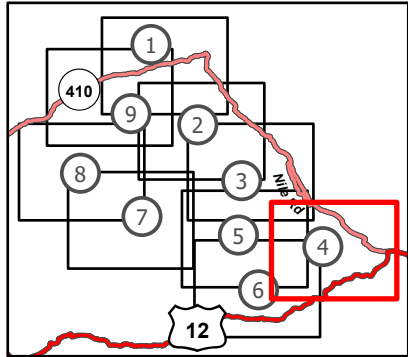
Schneider Springs
WAOWF-000453
8/16/2021

16,516 acres at 8/14/2021

Page 4 of 9



- Helibase
- Water Development or Draft Site
- Completed Fuel Break
- Administrative FS Boundary



8/15/2021 1636
Acres from IR
North American 1983 Datum.
Lat/Long Grid

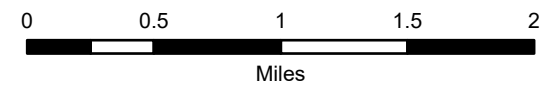


Transportation Map

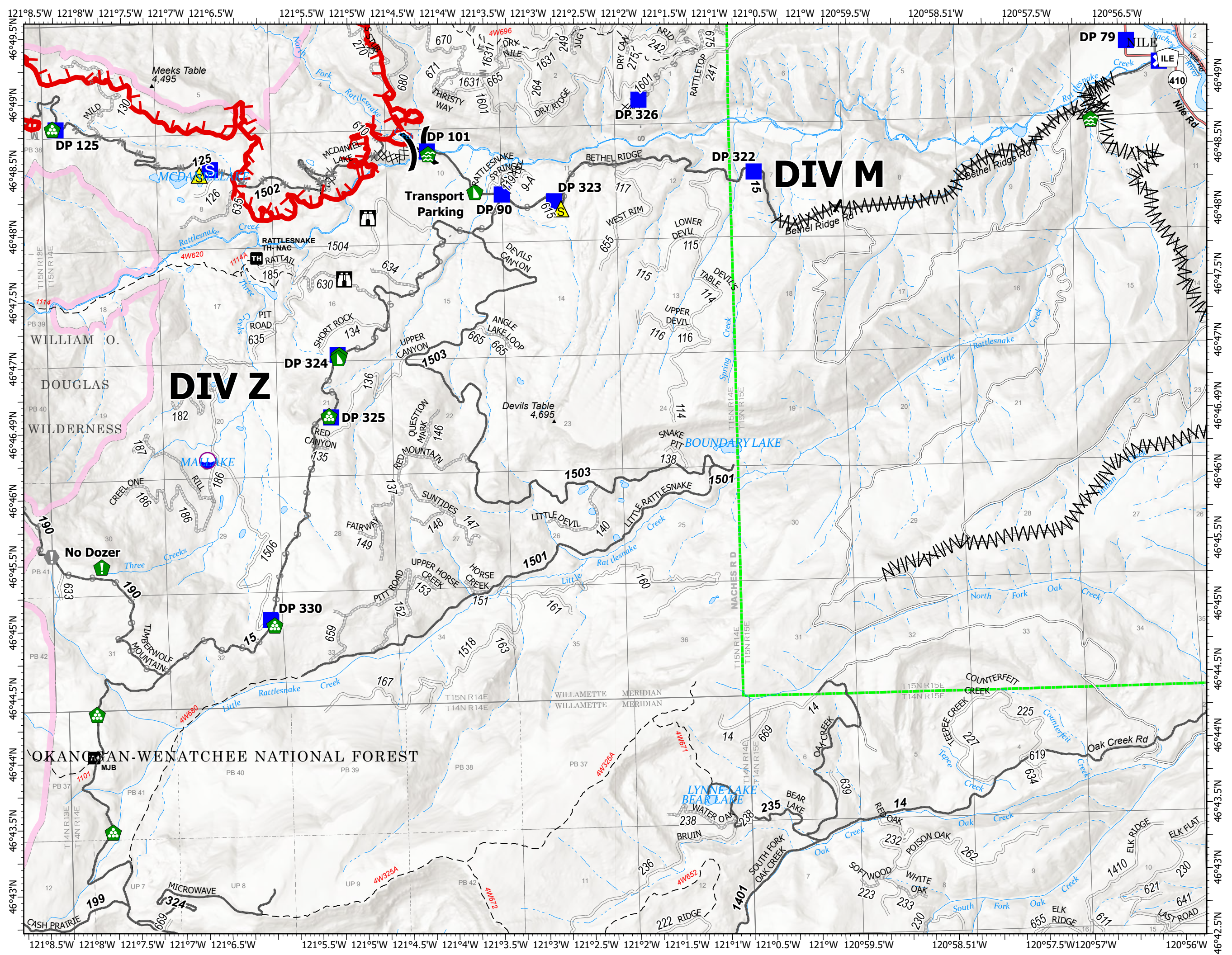
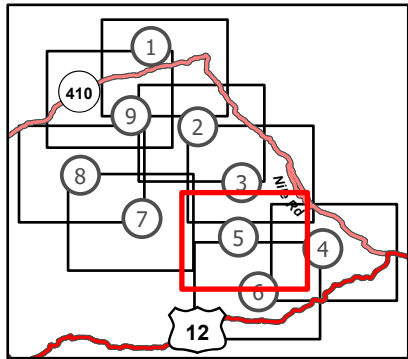
Schneider Springs
WAOWF-000453
8/16/2021

16,516 acres at 8/14/2021

Page 5 of 9



- Dip Site
- Division Break
- Drop Point
- Closure
- Staging Area
- Lookout
- Value at Risk
- Water Development or Draft Site
- Resource Location
- Landing or Log Deck
- Dozer Push
- Safety Zone
- Completed Dozer Line
- Completed Fuel Break
- Planned Dozer Line
- Planned Mixed Construction Line
- Planned Secondary Line
- Fire Edge
- Administrative FS Boundary
- FS Wilderness Boundary



Transportation Map

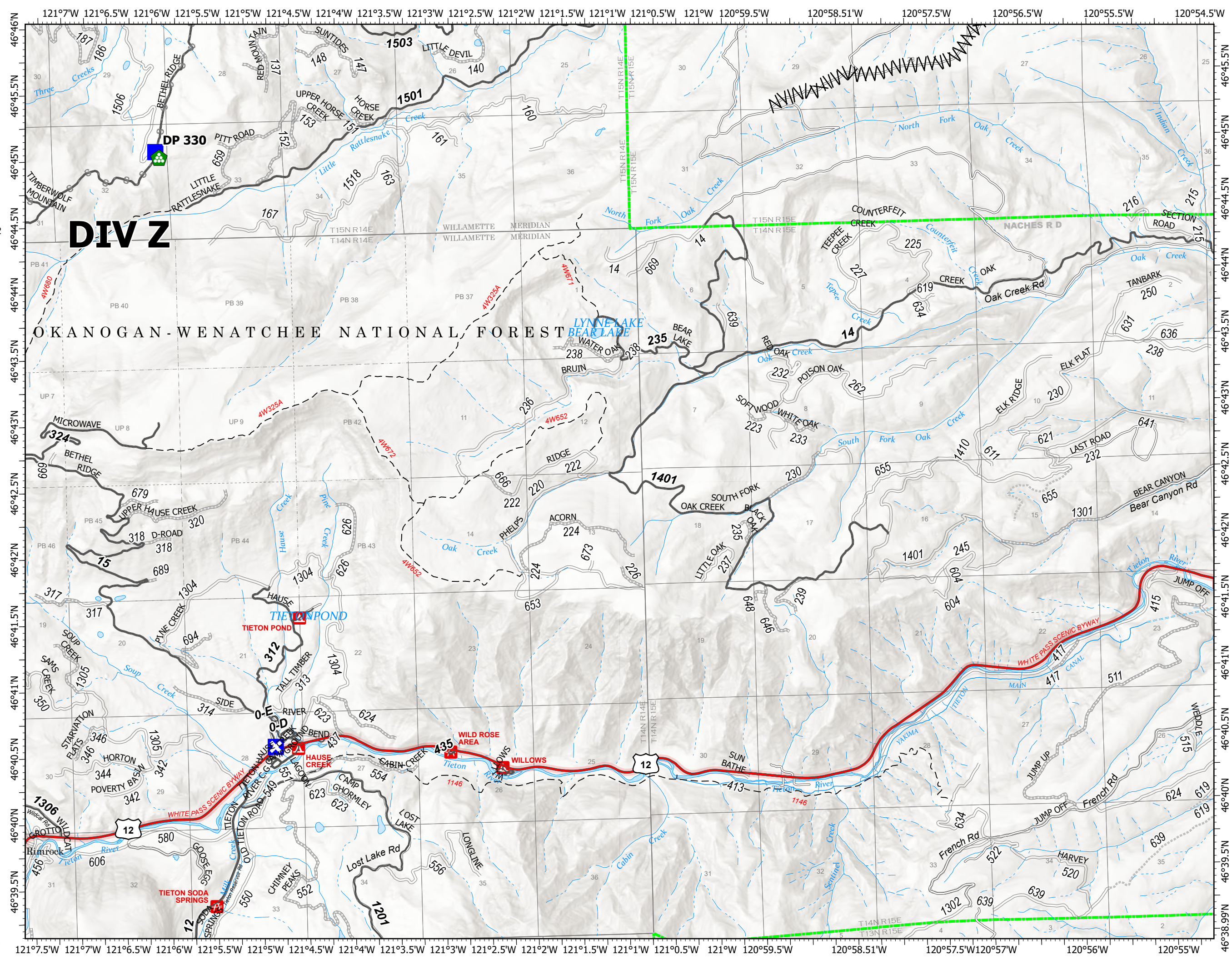
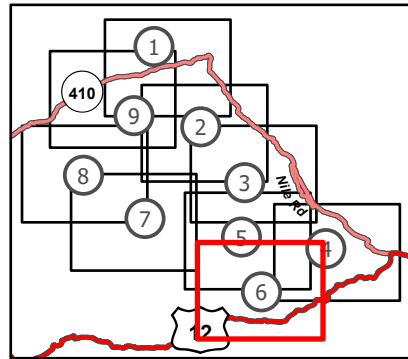
Schneider Springs
WAOWF-000453
8/16/2021

16,516 acres at 8/14/2021

Page 6 of 9



- Drop Point
- Closure
- Landing or Log Deck
- Completed Fuel Break
- Planned Secondary Line
- Administrative FS Boundary



DIV Z

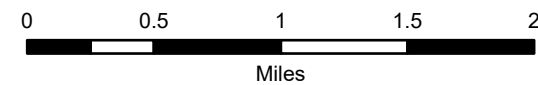
OKANOGAN - WENATCHEE NATIONAL FOREST

Transportation Map

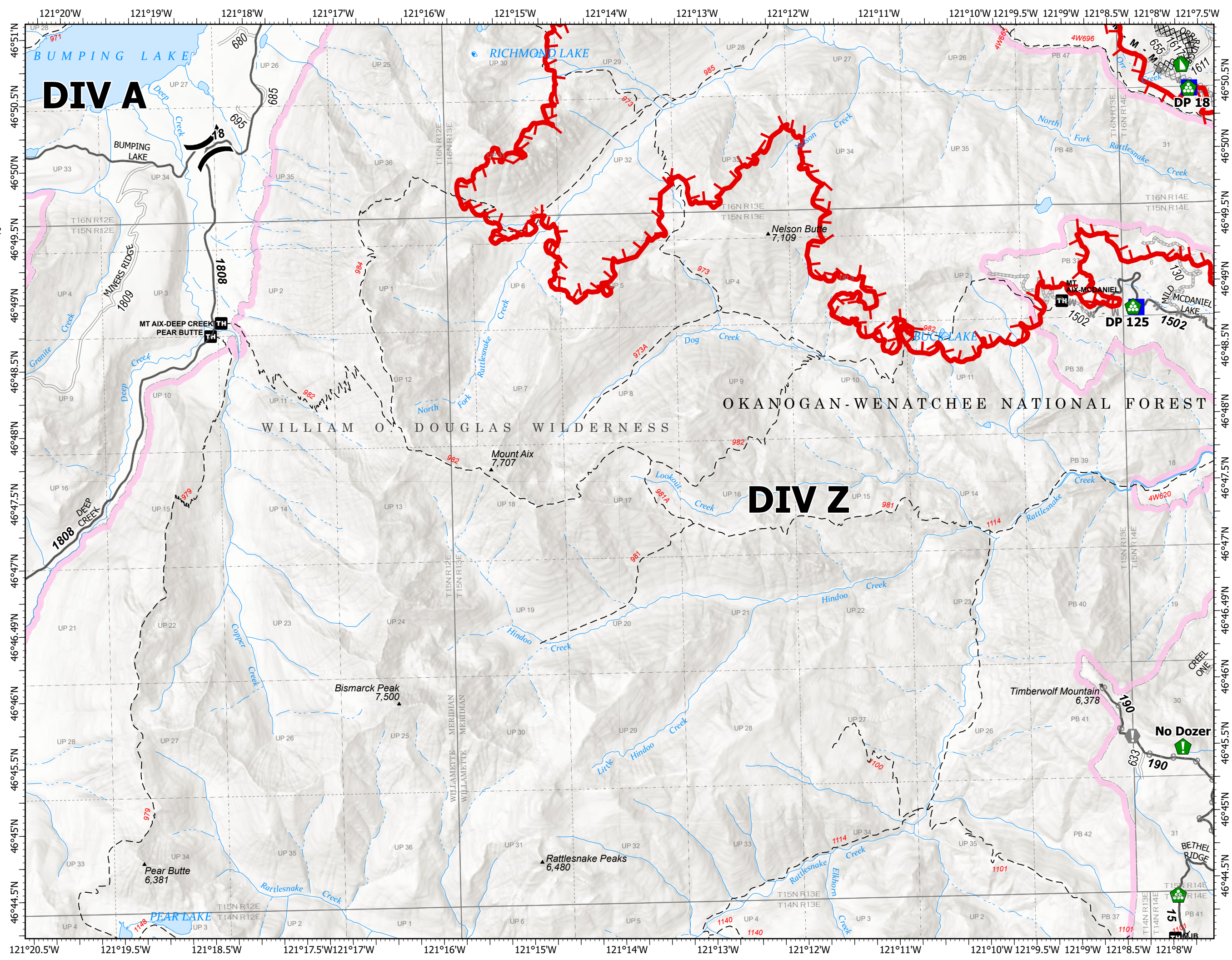
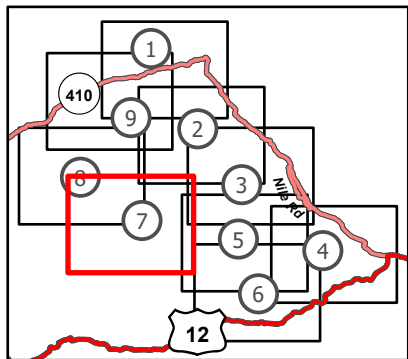
Schneider Springs
WAOWF-000453
8/16/2021

16,516 acres at 8/14/2021

Page 7 of 9



- () Division Break
- Drop Point
- Ⓜ Value at Risk
- 📍 Resource Location
- 🏠 Landing or Log Deck
- 🚧 Dozer Push
- ⌘ Completed Dozer Line
- Ⓜ Completed Mixed Construction Line
- Ⓜ Completed Road as Line
- ⌘ Planned Dozer Line
- Ⓜ Planned Mixed Construction Line
- Ⓜ Planned Secondary Line
- 🔴 Fire Edge
- 🟢 Administrative FS Boundary
- ⬜ FS Wilderness Boundary



Transportation Map

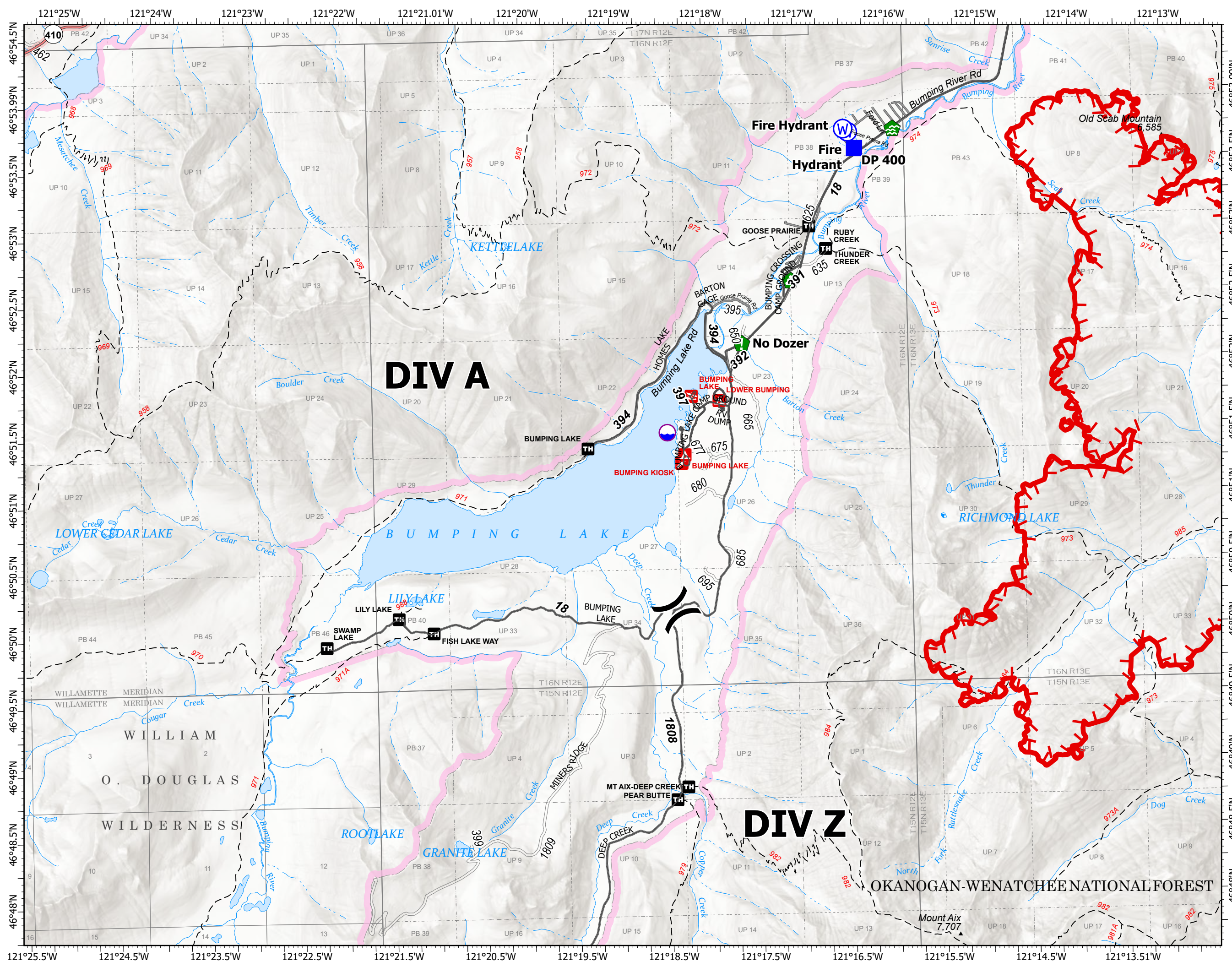
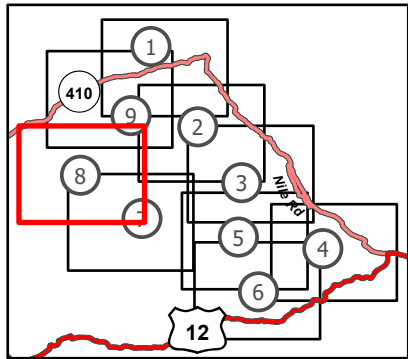
Schneider Springs
WAOWF-000453
8/16/2021

16,516 acres at 8/14/2021

Page 8 of 9



- Dip Site
- Division Break
- Drop Point
- Water Development or Draft Site
- Resource Location
- Landing or Log Deck
- Water Source
- Fire Edge
- Administrative FS Boundary
- FS Wilderness Boundary

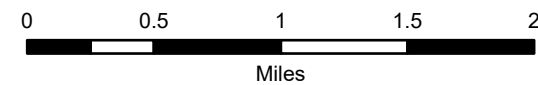


Transportation Map

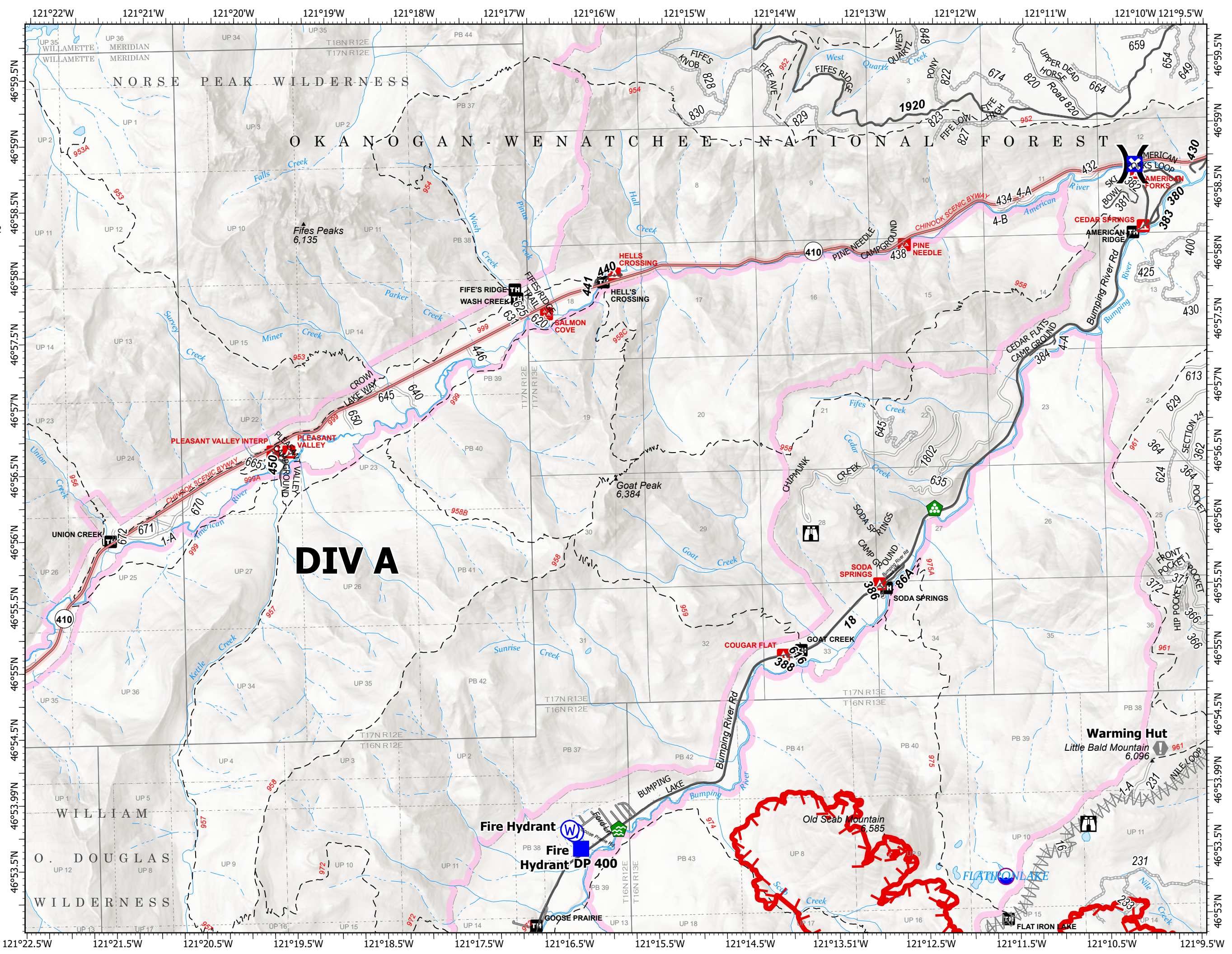
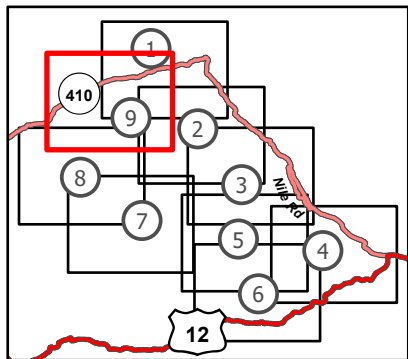
Schneider Springs
WAOWF-000453
8/16/2021

16,516 acres at 8/14/2021

Page 9 of 9



- Dip Site
- Division Break
- Drop Point
- Closure
- Lookout
- Value at Risk
- Water Development or Draft Site
- Landing or Log Deck
- Water Source
- Planned Fuel Break
- Fire Edge
- Administrative FS Boundary
- FS Wilderness Boundary



8/15/2021 1637
Acres from IR
North American 1983 Datum.
LatLong Grid

