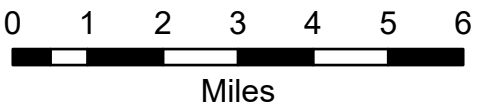


Transportation Map Index

Schneider Springs
WAOWF-000453
8/16/2021

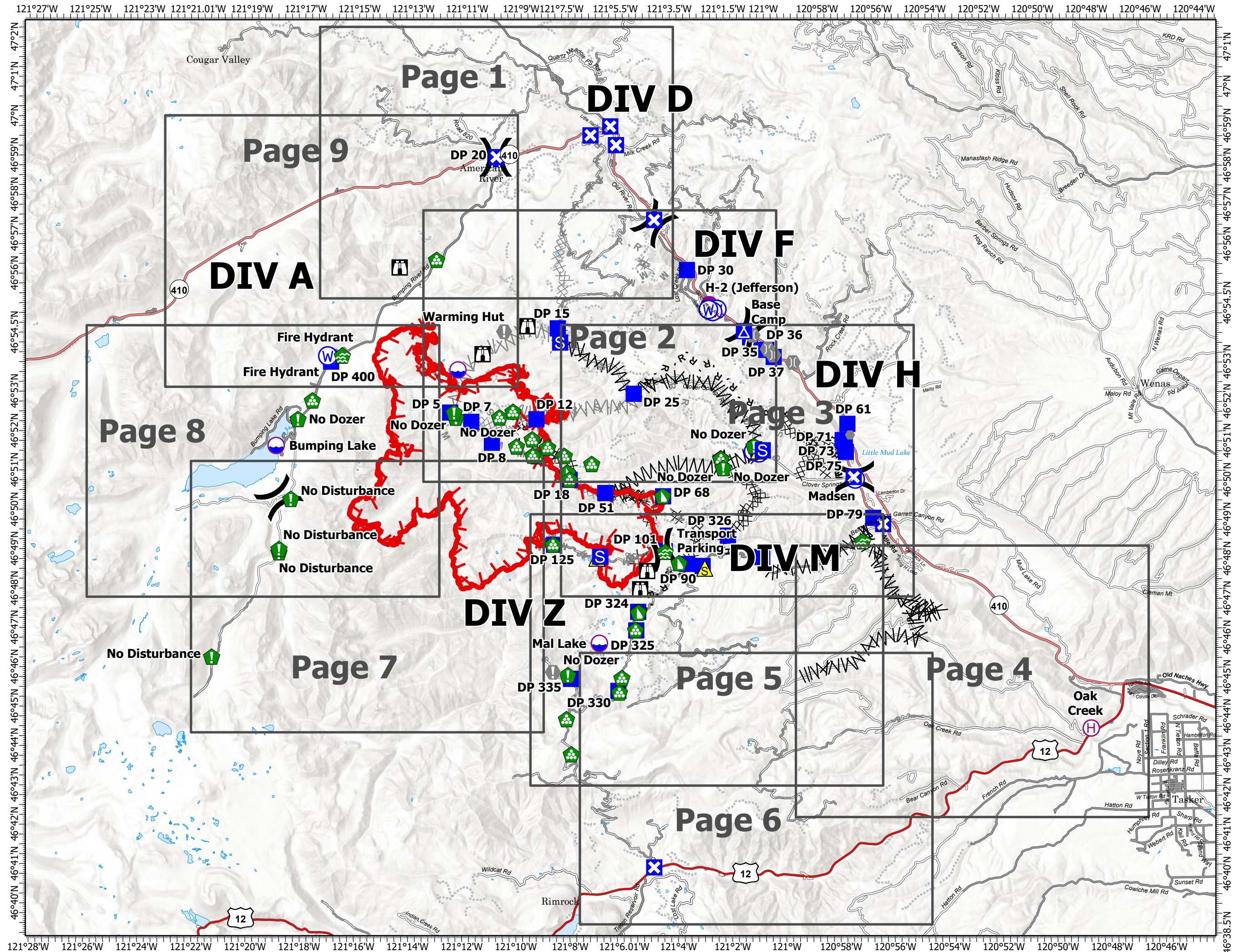
18,836 acres at 8/15/2021



- Dip Site
- Helispot
- Helibase
- Division Break
- Drop Point
- Closure
- Camp
- Staging Area
- Lookout
- Value at Risk
- Other
- Bridge
- Water Development or Draft Site
- Resource Location
- Landing or Log Deck
- Dozer Push
- Safety Zone
- Water Source
- Restricted Water Source
- Completed Dozer Line
- Completed Fuel Break
- Completed Hand Line
- Completed Mixed Construction Line
- Completed Road as Line
- Planned Dozer Line
- Planned Fuel Break
- Planned Mixed Construction Line
- Planned Road as Line
- Planned Secondary Line
- Access or Improved Road
- Other
- Fire Edge
- Grid Index



DBurbank
8/16/2021 0840
Acres from IR
North American 1983 Datum.
Lat/Long Grid

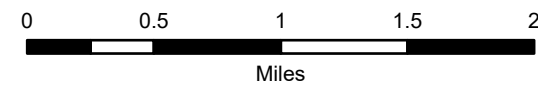


Transportation Map

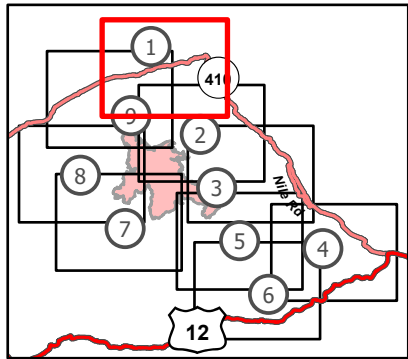
Schneider Springs
WAOWF-000453
8/16/2021

18,836 acres at 8/15/2021

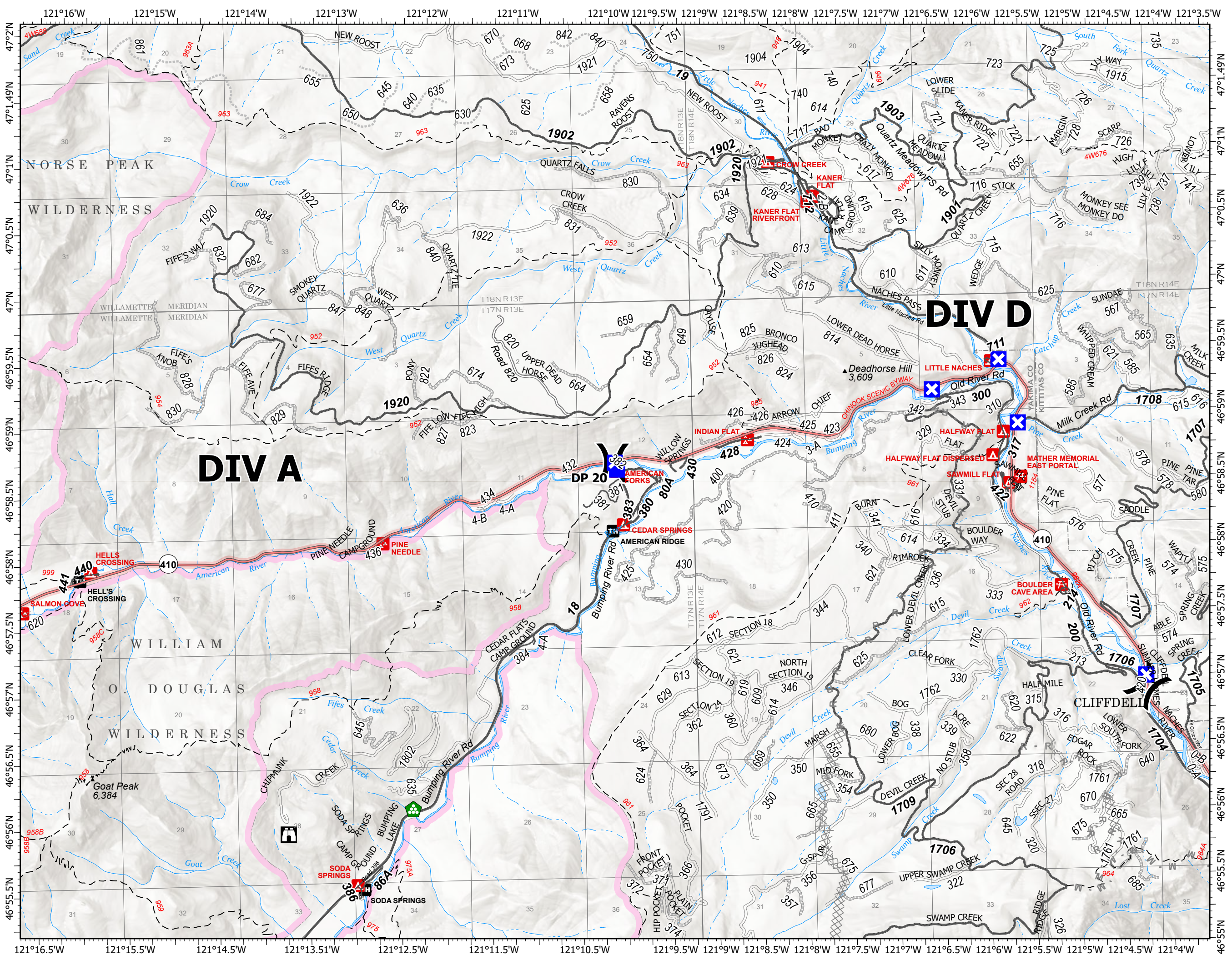
Page 1 of 9



- () Division Break
- Drop Point
- ⊠ Closure
- Ⓜ Lookout
- 🌲 Landing or Log Deck
- ⊗ Planned Dozer Line
- M - Planned Mixed Construction Line
- R - Planned Road as Line
- ▭ Administrative FS Boundary
- ▭ FS Wilderness Boundary



8/16/2021 0850
Acres from IR
North American 1983 Datum.
Lat/Long Grid

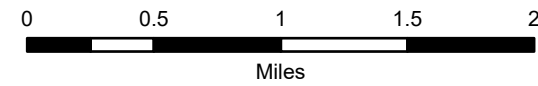


Transportation Map

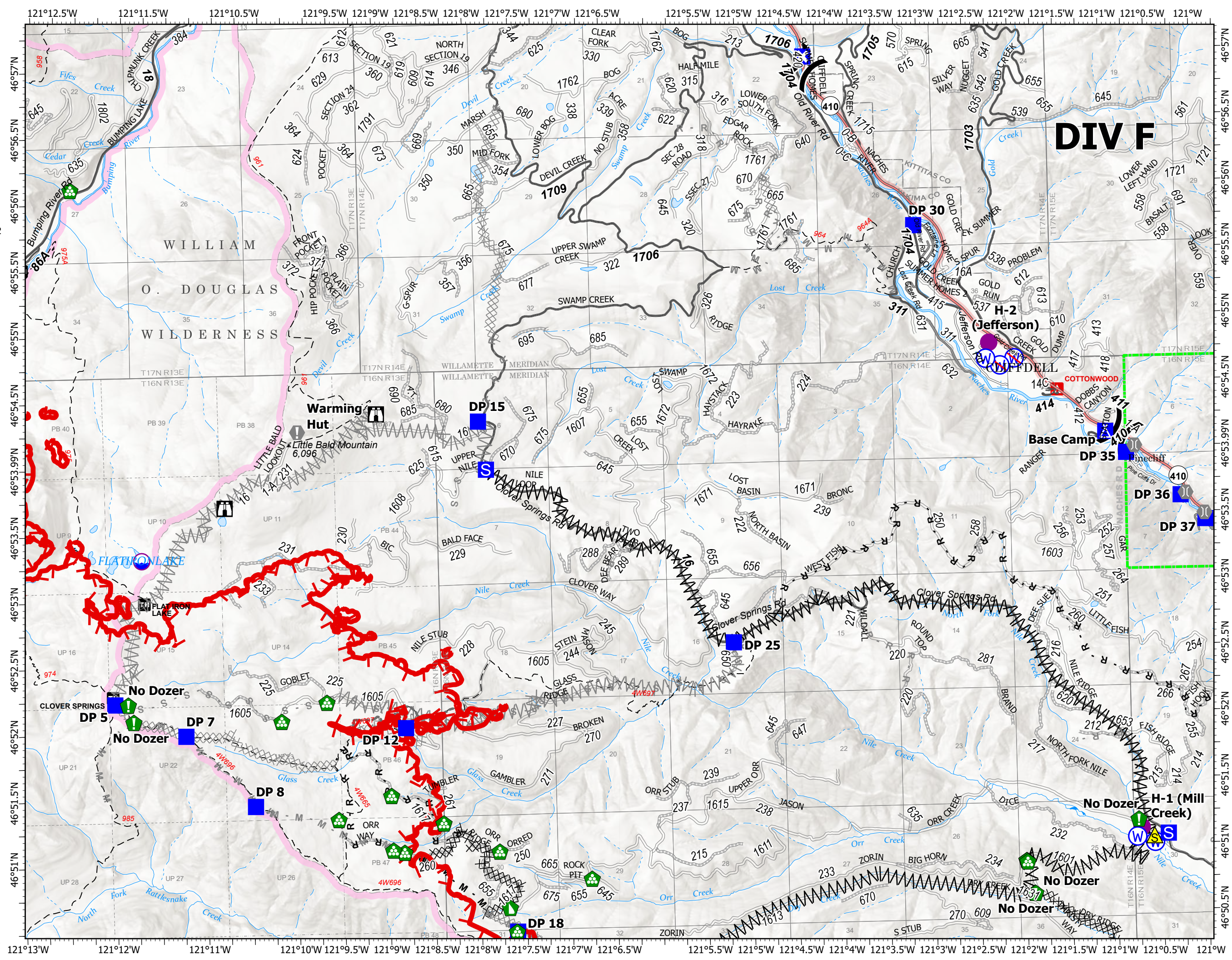
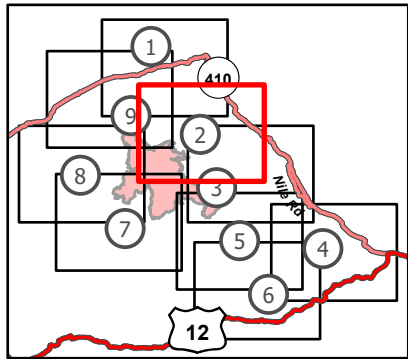
Schneider Springs
WAOWF-000453
8/16/2021

18,836 acres at 8/15/2021

Page 2 of 9



- Dip Site
- Helispot
- Division Break
- Drop Point
- Closure
- Camp
- Staging Area
- Lookout
- Value at Risk
- Bridge
- Resource Location
- Landing or Log Deck
- Dozer Push
- Safety Zone
- Water Source
- Restricted Water Source
- Completed Dozer Line
- Completed Fuel Break
- Completed Mixed Construction Line
- Completed Road as Line
- Planned Dozer Line
- Planned Fuel Break
- Planned Mixed Construction Line
- Planned Road as Line
- Planned Secondary Line
- Other
- Fire Edge
- Administrative FS Boundary
- FS Wilderness Boundary



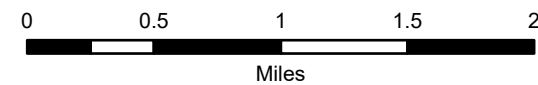
DIV F

Transportation Map

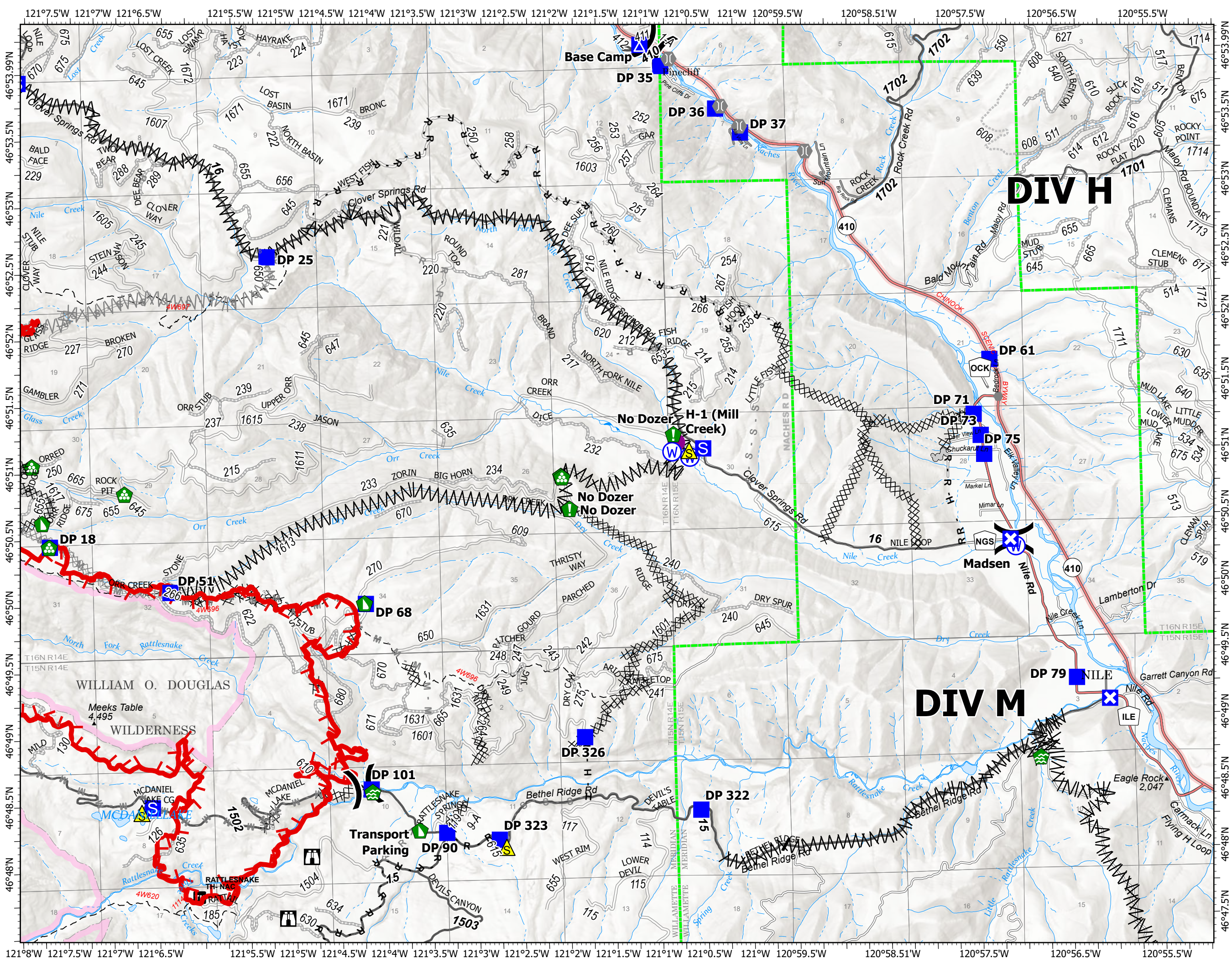
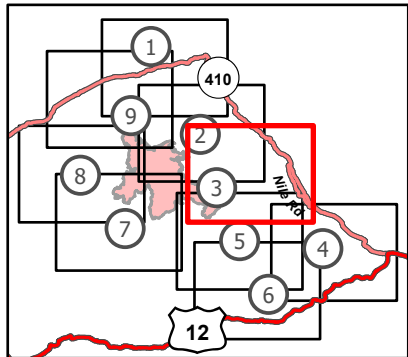
Schneider Springs
WAOWF-000453
8/16/2021

18,836 acres at 8/15/2021

Page 3 of 9



- Helispot
- | Division Break
- Drop Point
- ⊗ Closure
- ▲ Camp
- Staging Area
- ⌂ Lookout
- Other
- ⌂ Bridge
- 🏠 Water Development or Draft Site
- 📍 Resource Location
- 📍 Landing or Log Deck
- 📍 Dozer Push
- ⚠ Safety Zone
- ⊙ Water Source
- ⊗ Completed Dozer Line
- ⊗ Completed Fuel Break
- H Completed Hand Line
- M Completed Mixed Construction Line
- R Completed Road as Line
- ⊗ Planned Dozer Line
- ⊗ Planned Fuel Break
- M Planned Mixed Construction Line
- R Planned Road as Line
- S Planned Secondary Line
- Access or Improved Road
- Fire Edge
- Administrative FS Boundary
- FS Wilderness Boundary

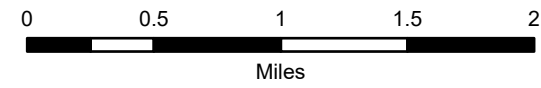


Transportation Map

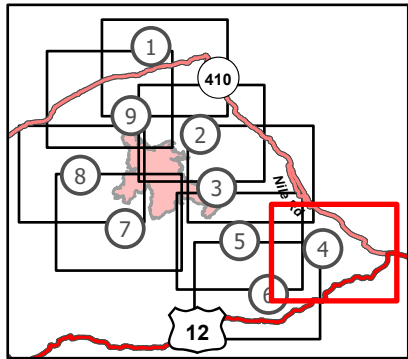
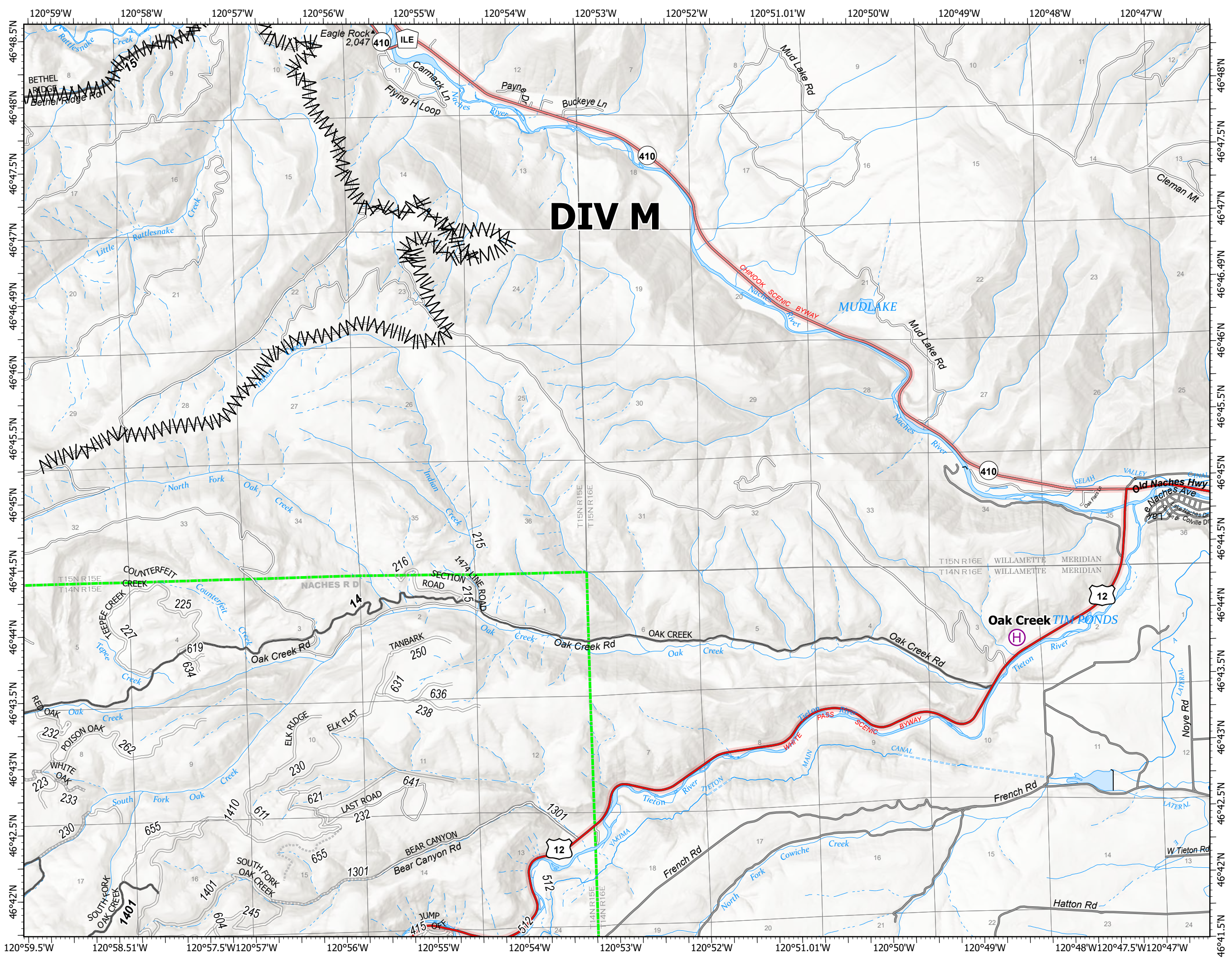
Schneider Springs
WAOWF-000453
8/16/2021

18,836 acres at 8/15/2021

Page 4 of 9



- Helibase
- Water Development or Draft Site
- Completed Fuel Break
- Administrative FS Boundary



8/16/2021 0851
Acres from IR
North American 1983 Datum.
Lat/Long Grid

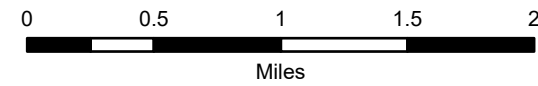


Transportation Map

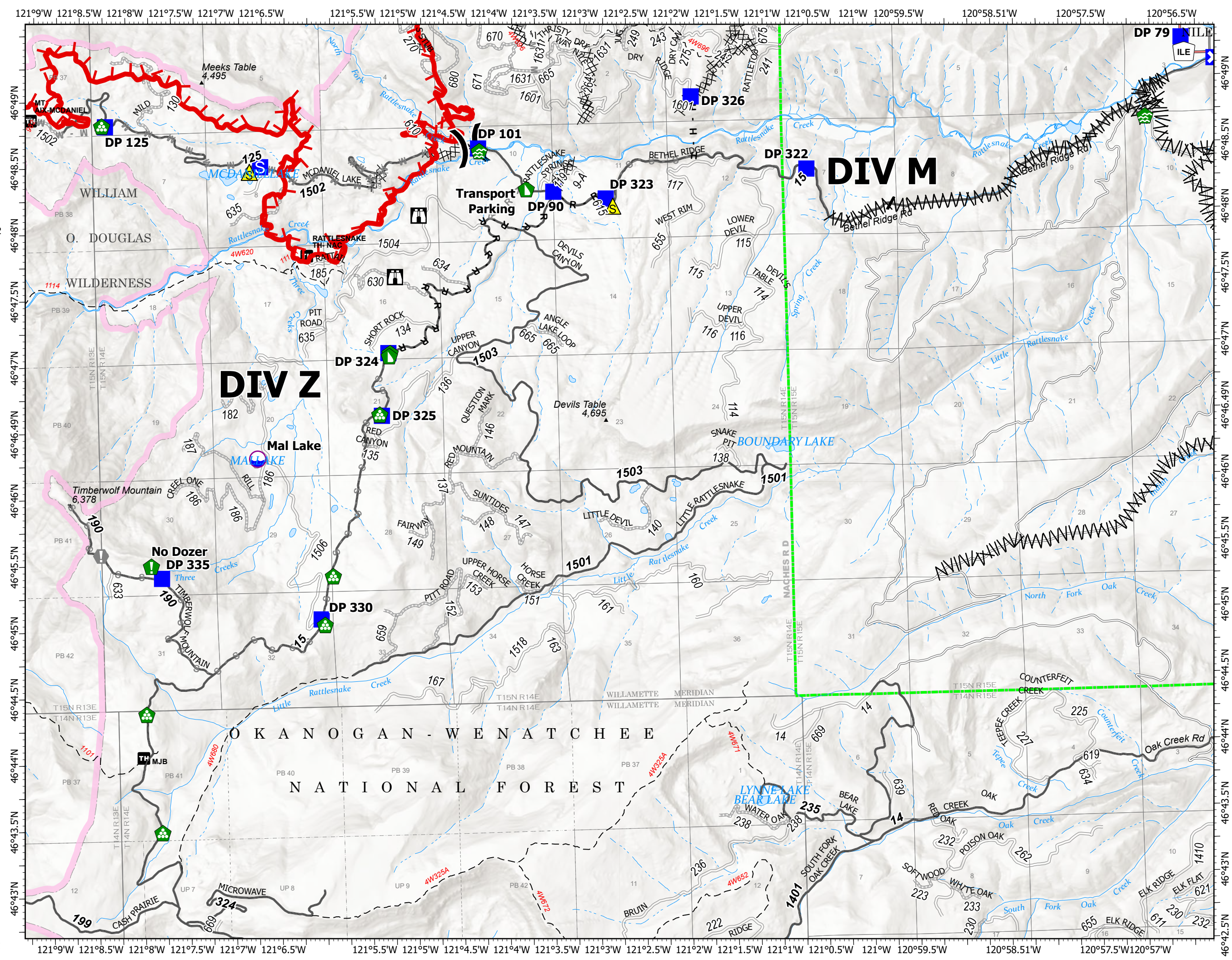
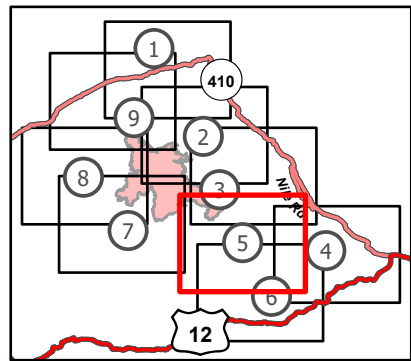
Schneider Springs
WAOWF-000453
8/16/2021

18,836 acres at 8/15/2021

Page 5 of 9



- Dip Site
- Division Break
- Drop Point
- Closure
- Staging Area
- Lookout
- Value at Risk
- Water Development or Draft Site
- Resource Location
- Landing or Log Deck
- Dozer Push
- Safety Zone
- Completed Dozer Line
- Completed Fuel Break
- Completed Hand Line
- Completed Road as Line
- Planned Dozer Line
- Planned Mixed Construction Line
- Planned Road as Line
- Planned Secondary Line
- Fire Edge
- Administrative FS Boundary
- FS Wilderness Boundary

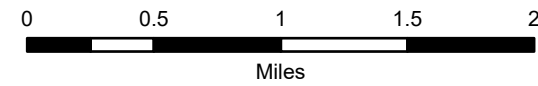


Transportation Map

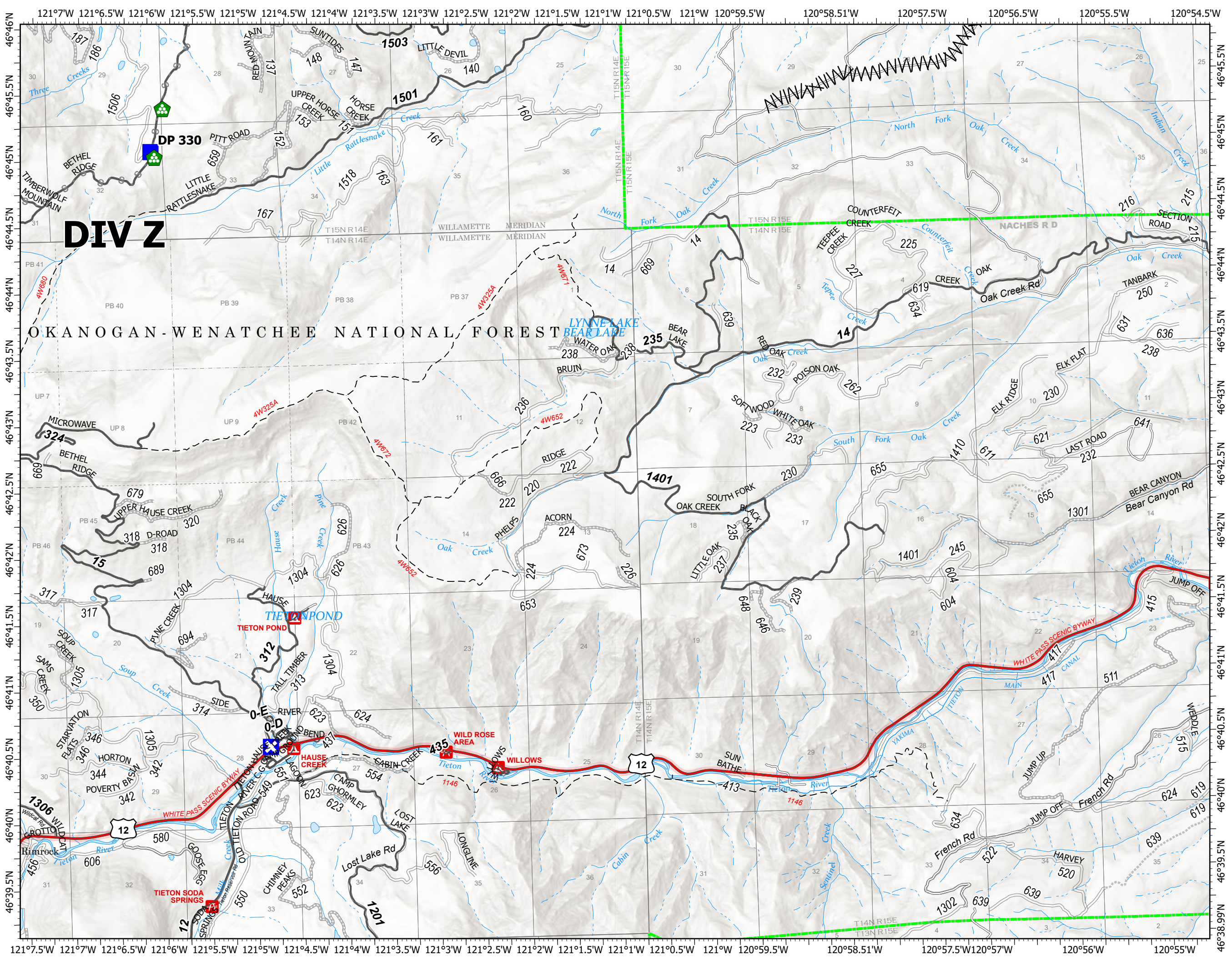
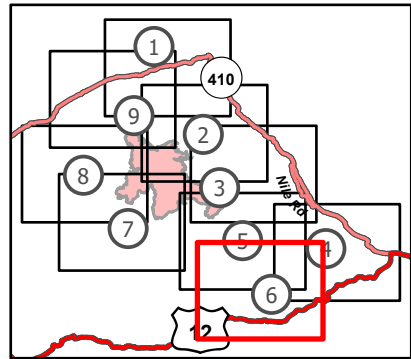
Schneider Springs
WAOWF-000453
8/16/2021

18,836 acres at 8/15/2021

Page 6 of 9



- Drop Point
- Closure
- Landing or Log Deck
- Completed Fuel Break
- Planned Secondary Line
- Administrative FS Boundary

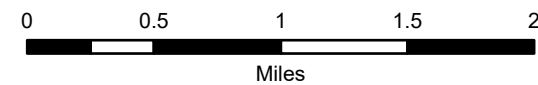


Transportation Map

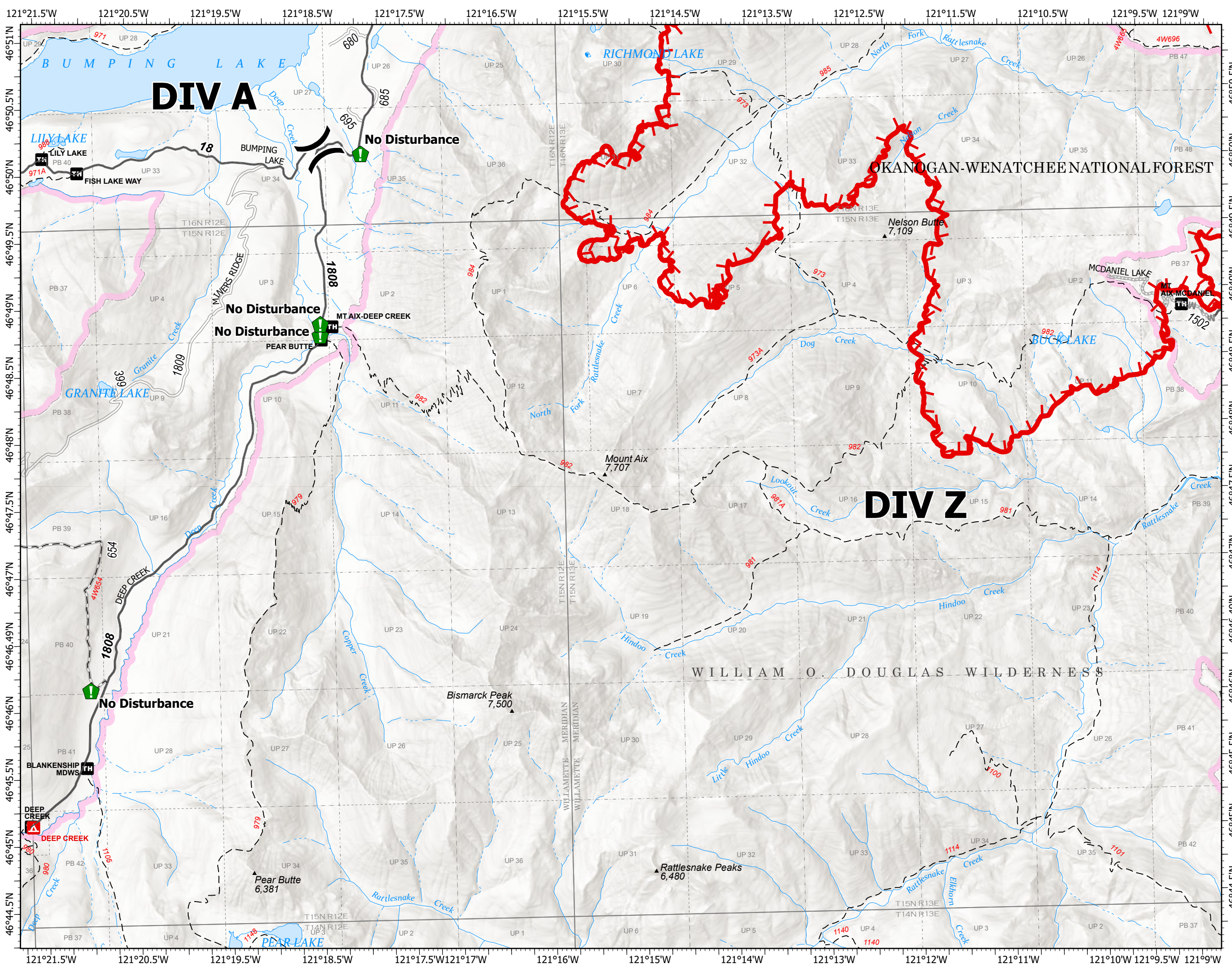
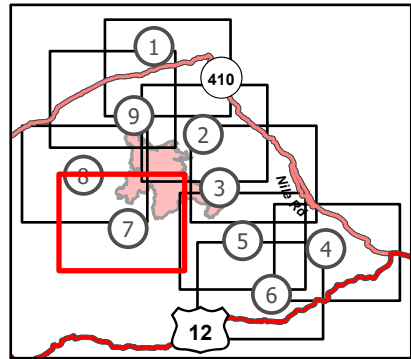
Schneider Springs
 WAOWF-000453
 8/16/2021

18,836 acres at 8/15/2021

Page 7 of 9



- (X) Division Break
- 📍 Resource Location
- 🏠 Landing or Log Deck
- ⌘ Completed Dozer Line
- M - Completed Mixed Construction Line
- R - Completed Road as Line
- M - Planned Mixed Construction Line
- S - Planned Secondary Line
- 🔴 Fire Edge
- 🟩 Administrative FS Boundary
- 🟪 FS Wilderness Boundary

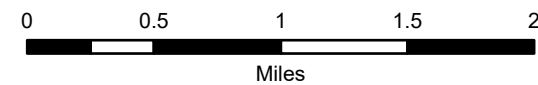


Transportation Map

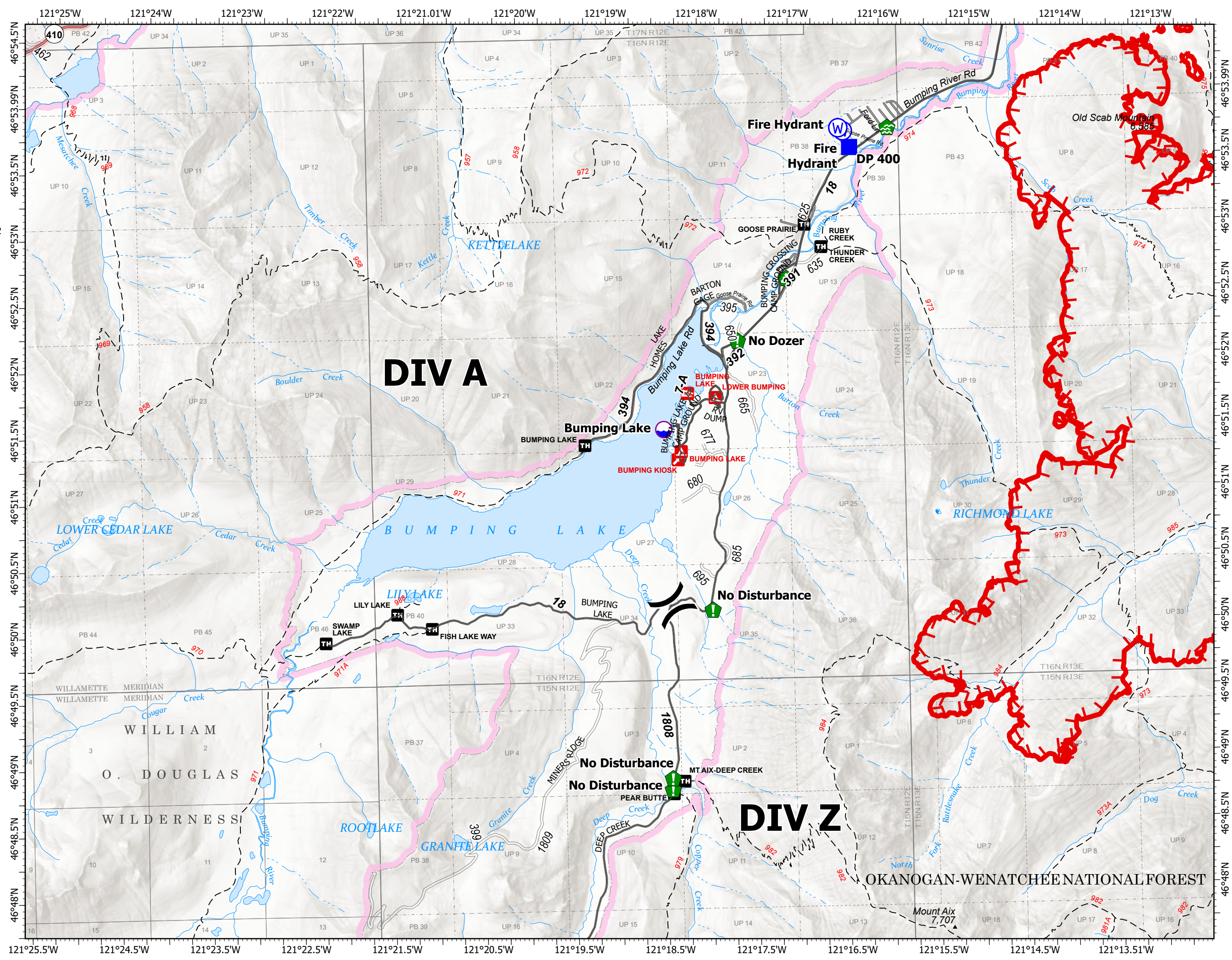
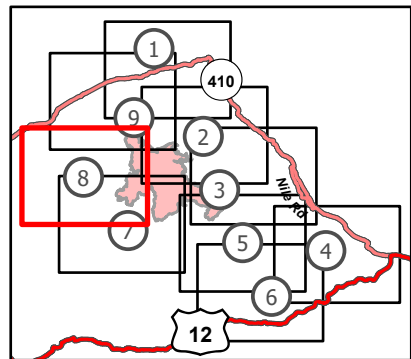
Schneider Springs
WAOWF-000453
8/16/2021

18,836 acres at 8/15/2021

Page 8 of 9



- Dip Site
- Division Break
- Drop Point
- Water Development or Draft Site
- Resource Location
- Landing or Log Deck
- Water Source
- Fire Edge
- Administrative FS Boundary
- FS Wilderness Boundary

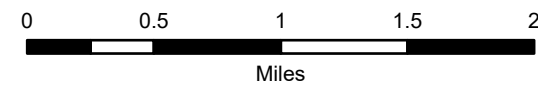


Transportation Map

Schneider Springs
 WAOWF-000453
 8/16/2021

18,836 acres at 8/15/2021

Page 9 of 9



- Dip Site
- Division Break
- Drop Point
- Closure
- Lookout
- Value at Risk
- Water Development or Draft Site
- Landing or Log Deck
- Water Source
- Planned Fuel Break
- Fire Edge
- Administrative FS Boundary
- FS Wilderness Boundary

