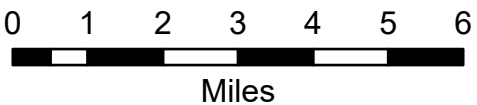


# Transportation Map Index

Schneider Springs  
WAOWF-000453  
8/17/2021

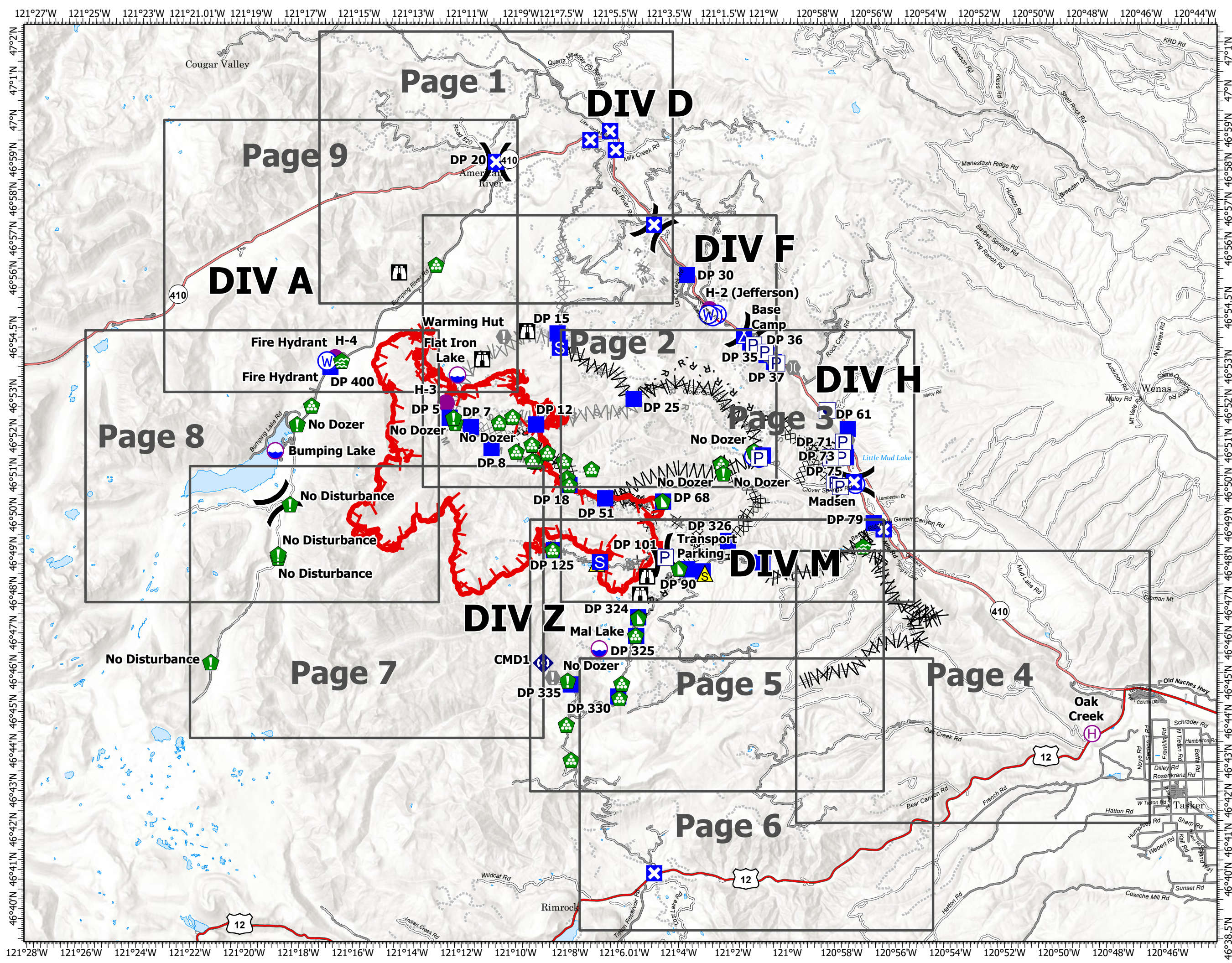
18,836 acres at 8/15/2021



- Dip Site
- Helispot
- Helibase
- Division Break
- Drop Point
- Closure
- Camp
- Staging Area
- Lookout
- Value at Risk
- Other
- Bridge
- Water Development or Draft Site
- Resource Location
- Landing or Log Deck
- Dozer Push
- Repeater
- Safety Zone
- Water Source
- Restricted Water Source
- Completed Dozer Line
- Completed Fuel Break
- Completed Hand Line
- Completed Mixed Construction Line
- Completed Road as Line
- Planned Dozer Line
- Planned Fuel Break
- Planned Mixed Construction Line
- Planned Road as Line
- Planned Secondary Line
- Access or Improved Road
- Other
- Fire Edge
- Grid Index



DBurbank  
8/16/2021 1724  
Acres from IR  
North American 1983 Datum.  
Lat/Long Grid



# Transportation Map

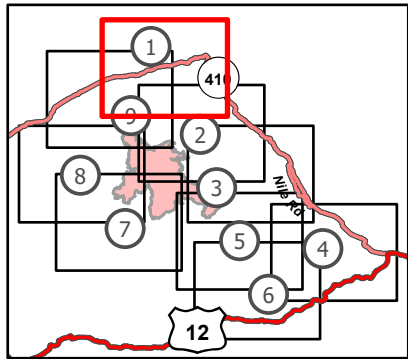
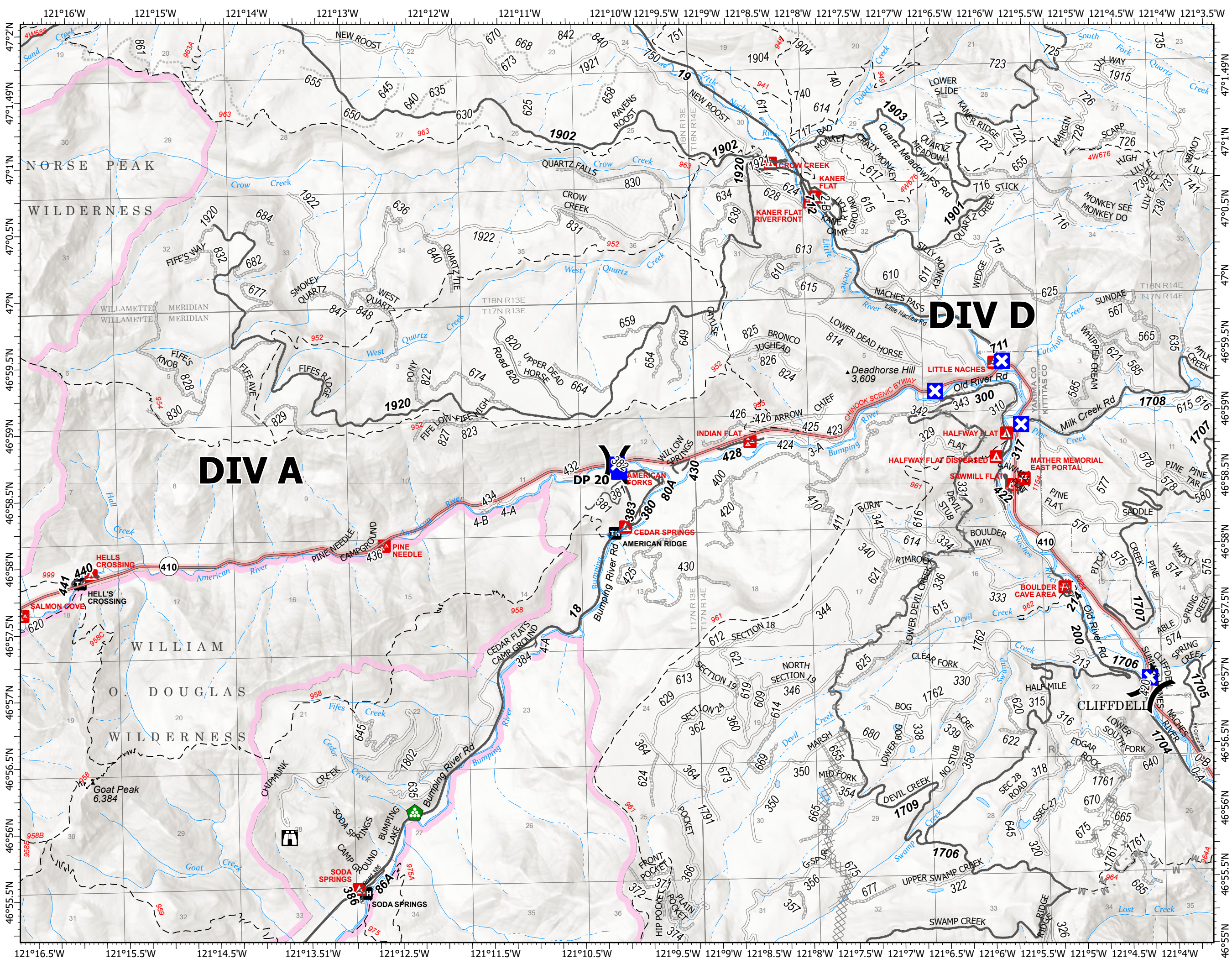
Schneider Springs  
 WAOWF-000453  
 8/17/2021

18,836 acres at 8/15/2021

Page 1 of 9



- ( ) Division Break
- Drop Point
- ⊠ Closure
- ⌘ Lookout
- 🏠 Landing or Log Deck
- ⊗ Planned Dozer Line
- M - Planned Mixed Construction Line
- R - Planned Road as Line
- ▭ Administrative FS Boundary
- ▭ FS Wilderness Boundary



8/16/2021 1715  
 Acres from IR  
 North American 1983 Datum.  
 Lat/Long Grid

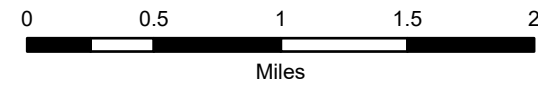


# Transportation Map

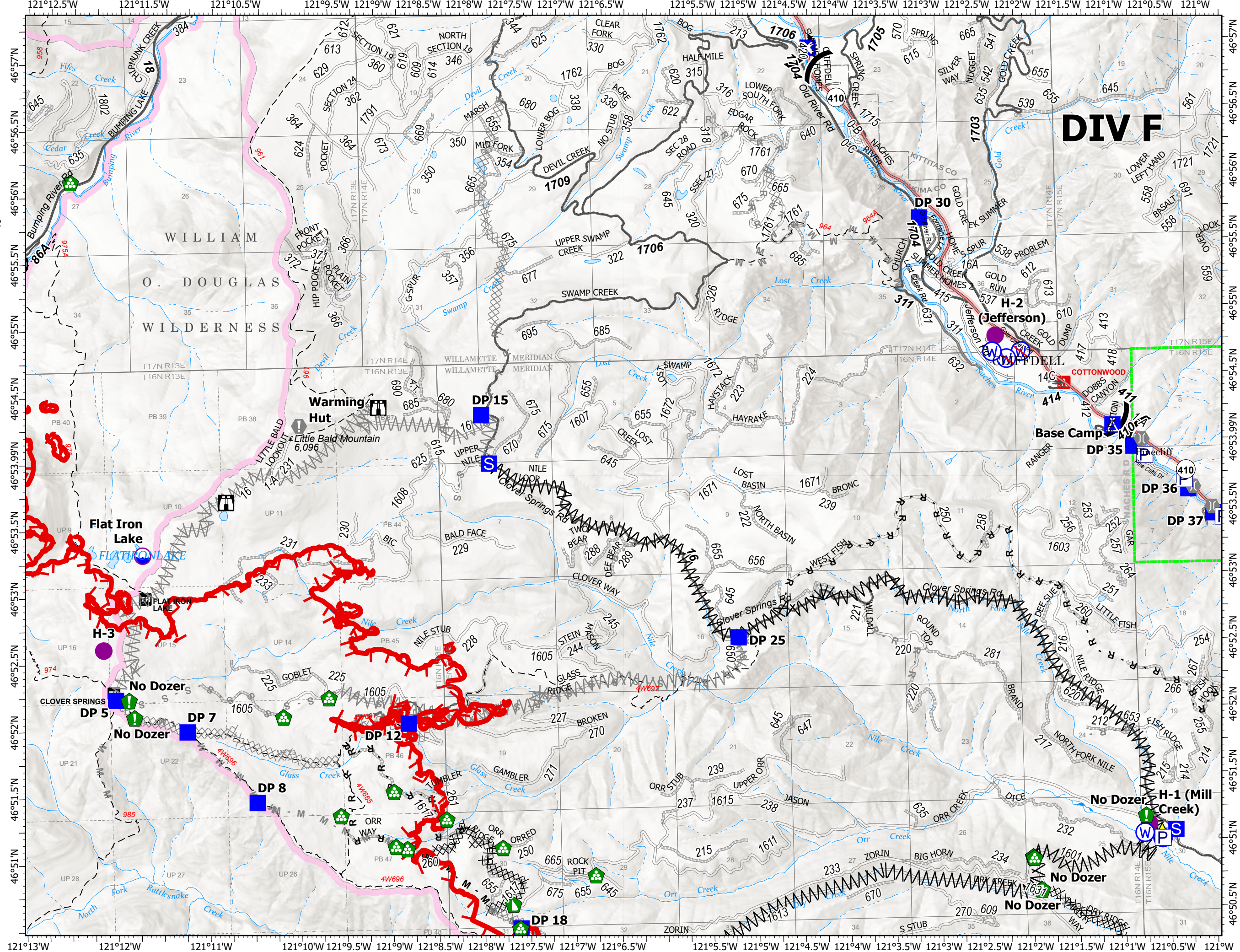
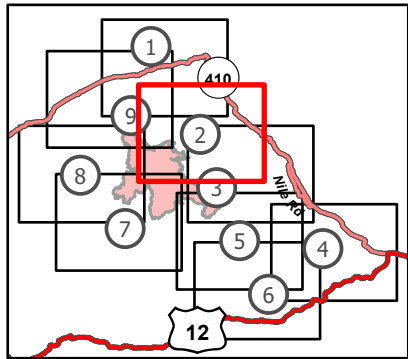
Schneider Springs  
WAOWF-000453  
8/17/2021

18,836 acres at 8/15/2021

Page 2 of 9



- Dip Site
- Helispot
- Division Break
- Drop Point
- Closure
- Camp
- Staging Area
- Lookout
- Value at Risk
- Bridge
- Resource Location
- Landing or Log Deck
- Dozer Push
- Safety Zone
- Water Source
- Restricted Water Source
- Pump
- Completed Dozer Line
- Completed Fuel Break
- Completed Mixed Construction Line
- Completed Road as Line
- Planned Dozer Line
- Planned Fuel Break
- Planned Mixed Construction Line
- Planned Road as Line
- Planned Secondary Line
- Other
- Fire Edge
- Administrative FS Boundary
- FS Wilderness Boundary



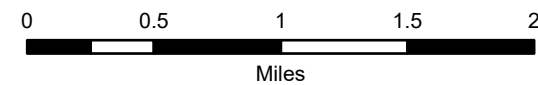
# DIV F

# Transportation Map

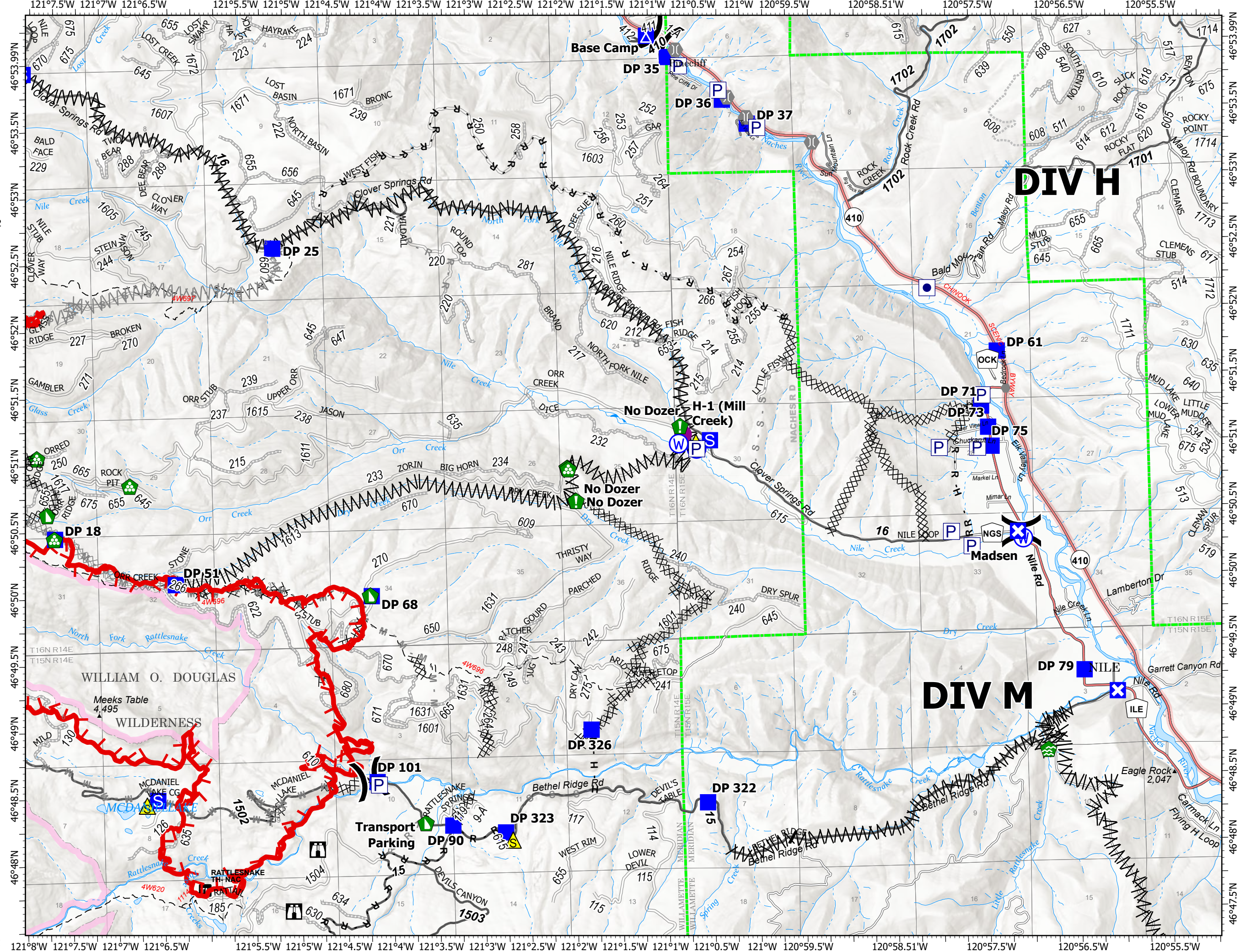
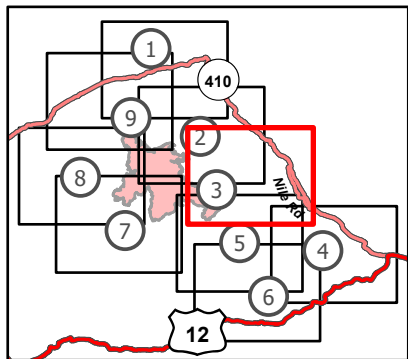
Schneider Springs  
WAOWF-000453  
8/17/2021

18,836 acres at 8/15/2021

Page 3 of 9



- Helispot
- X Division Break
- Drop Point
- Closure
- ▲ Camp
- Staging Area
- Lookout
- Other
- Bridge
- Water Development or Draft Site
- Resource Location
- Landing or Log Deck
- Dozer Push
- ▲ Safety Zone
- W Water Source
- Other Property
- Pump
- X Completed Dozer Line
- X Completed Fuel Break
- H Completed Hand Line
- M Completed Mixed Construction Line
- R Completed Road as Line
- X Planned Dozer Line
- X Planned Fuel Break
- M Planned Mixed Construction Line
- R Planned Road as Line
- S Planned Secondary Line
- Access or Improved Road
- Fire Edge
- Administrative FS Boundary
- FS Wilderness Boundary



# Transportation Map

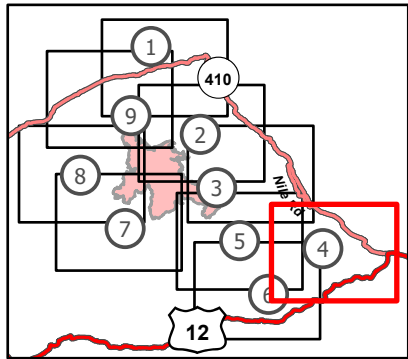
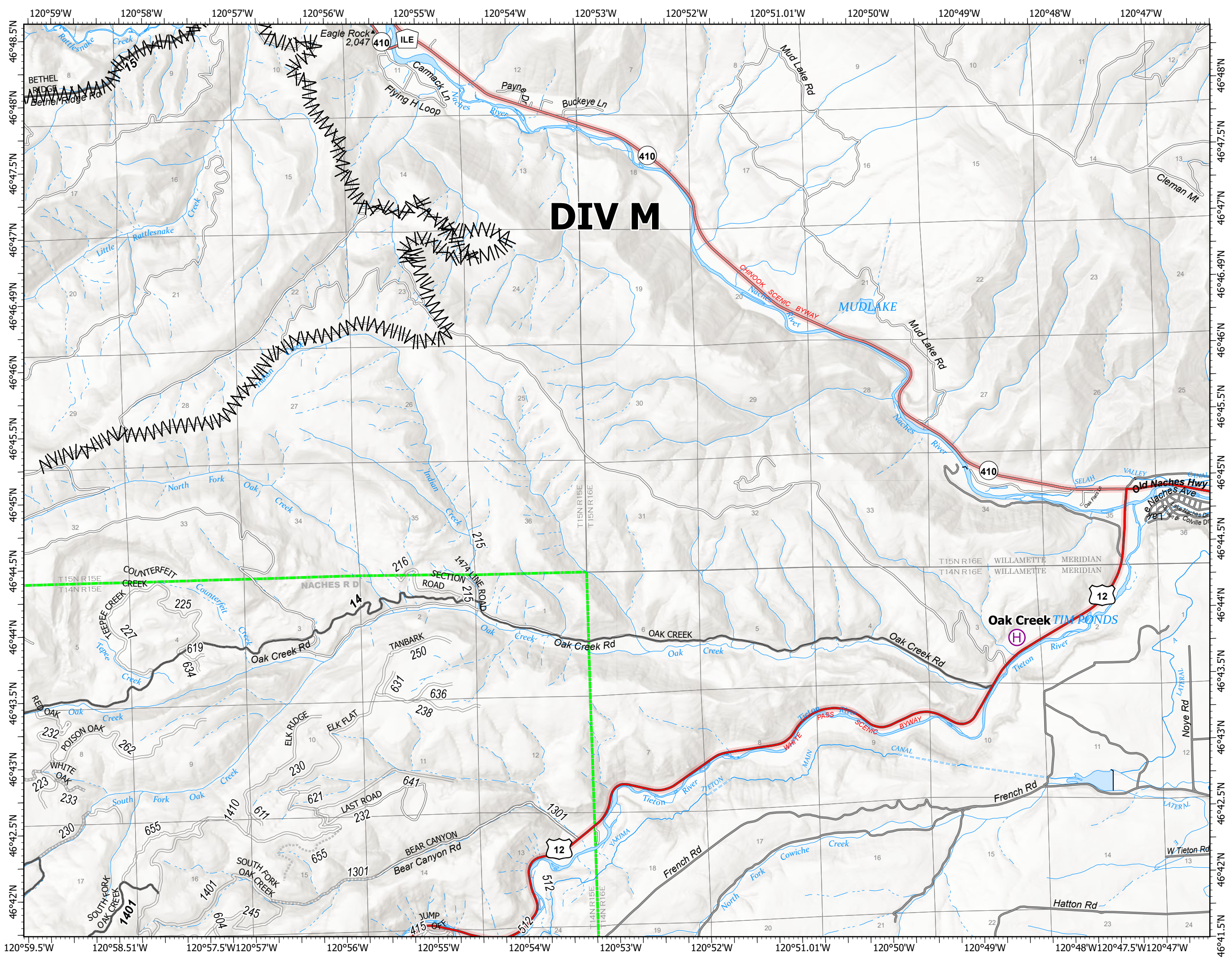
Schneider Springs  
WAOWF-000453  
8/17/2021

18,836 acres at 8/15/2021

Page 4 of 9



- Helibase
- Water Development or Draft Site
- Completed Fuel Break
- Administrative FS Boundary



8/16/2021 1716  
Acres from IR  
North American 1983 Datum.  
Lat/Long Grid

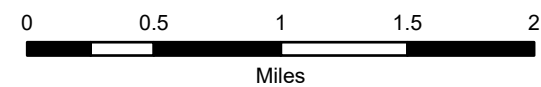


# Transportation Map

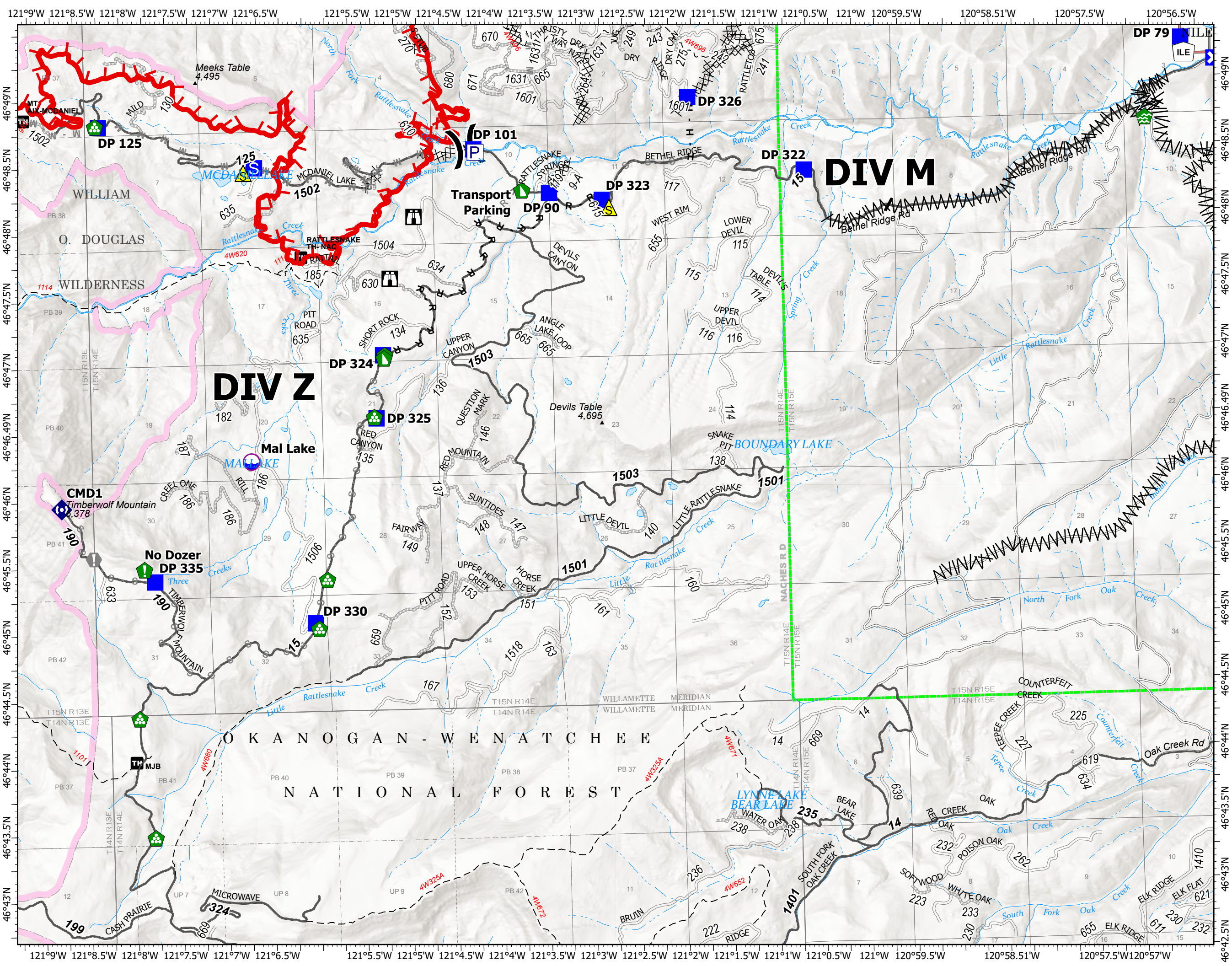
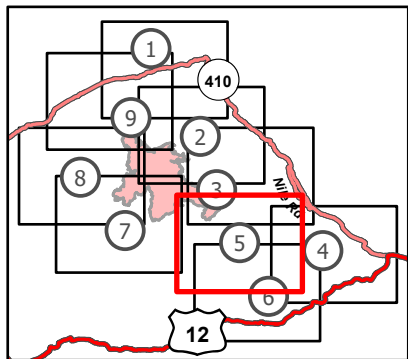
Schneider Springs  
WAOWF-000453  
8/17/2021

18,836 acres at 8/15/2021

Page 5 of 9



- Dip Site
- Division Break
- Drop Point
- Closure
- Staging Area
- Lookout
- Value at Risk
- Water Development or Draft Site
- Resource Location
- Landing or Log Deck
- Dozer Push
- Repeater
- Safety Zone
- Pump
- Completed Dozer Line
- Completed Fuel Break
- Completed Hand Line
- Completed Road as Line
- Planned Dozer Line
- Planned Mixed Construction Line
- Planned Road as Line
- Planned Secondary Line
- Fire Edge
- Administrative FS Boundary
- FS Wilderness Boundary



# Transportation Map

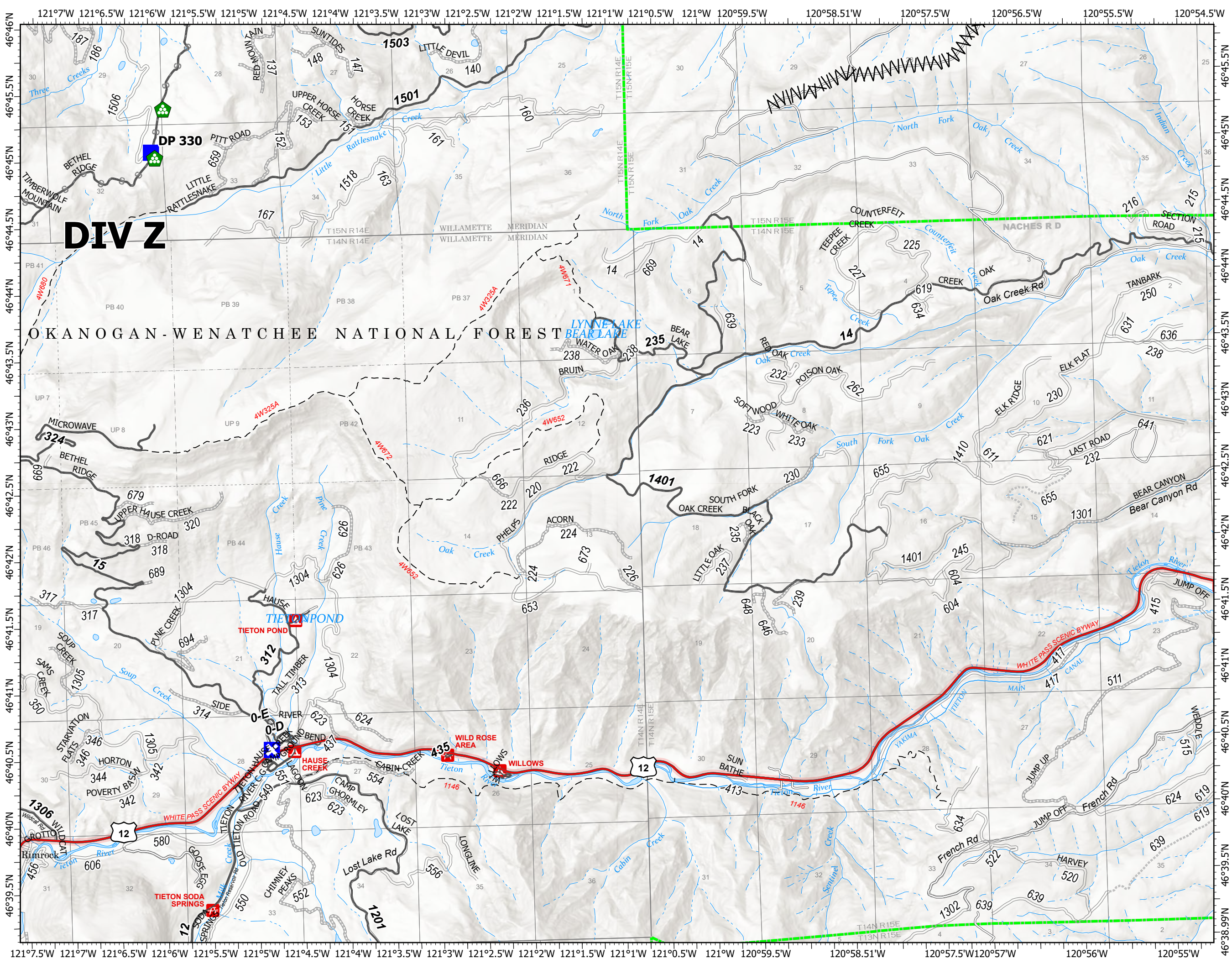
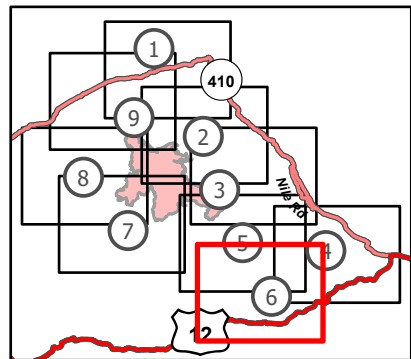
Schneider Springs  
WAOWF-000453  
8/17/2021

18,836 acres at 8/15/2021

Page 6 of 9



- Drop Point
- Closure
- Landing or Log Deck
- Completed Fuel Break
- Planned Secondary Line
- Administrative FS Boundary

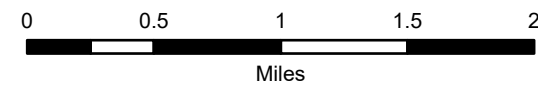


# Transportation Map

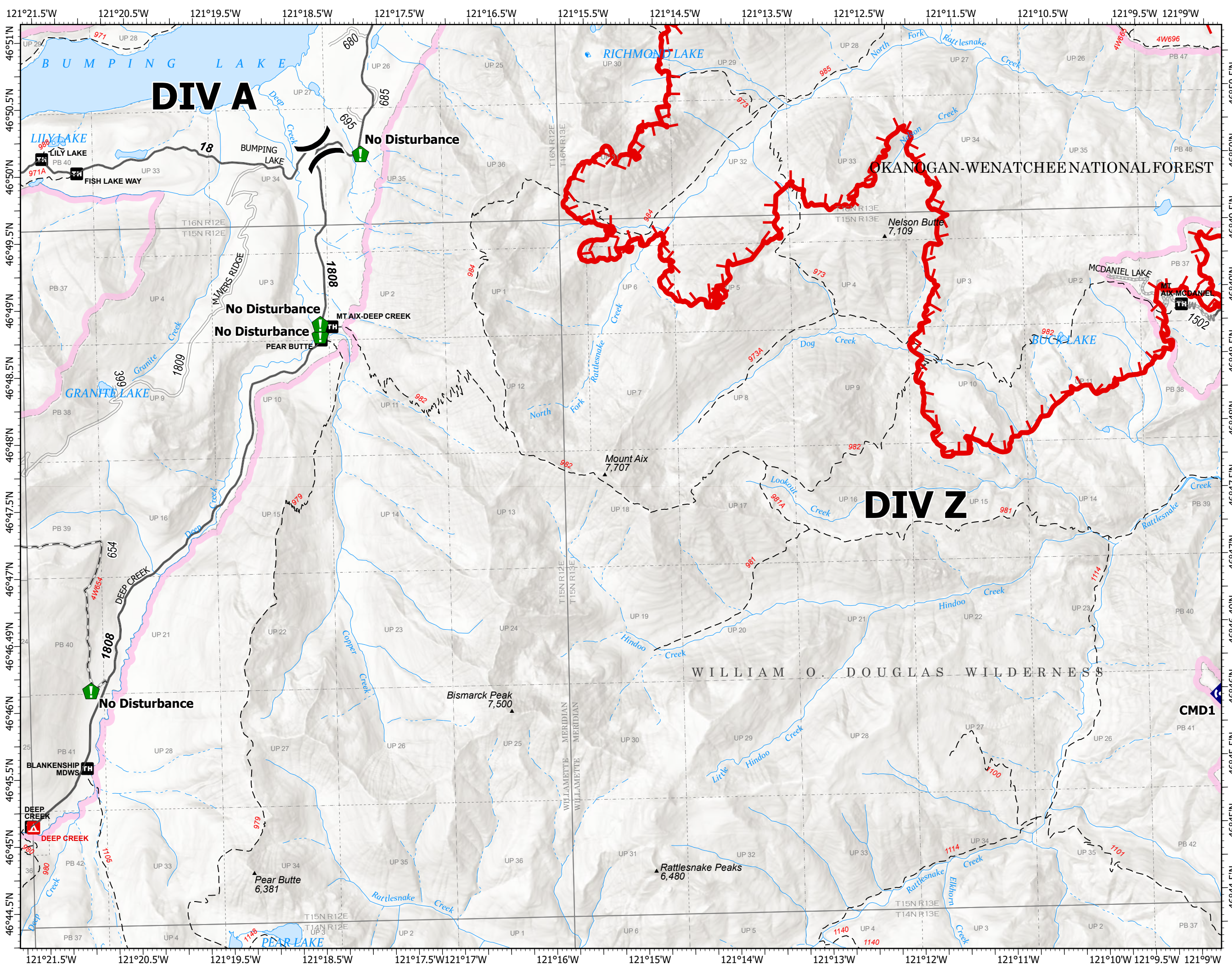
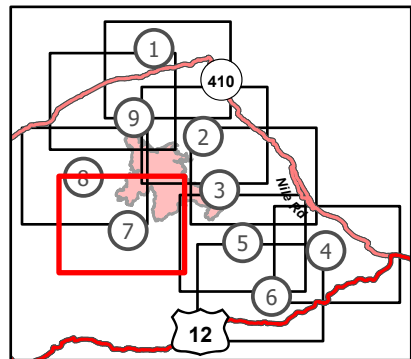
Schneider Springs  
WAOWF-000453  
8/17/2021

18,836 acres at 8/15/2021

Page 7 of 9



- ⌘ Division Break
- 📍 Resource Location
- 🏠 Landing or Log Deck
- 📡 Repeater
- ⌘ Completed Dozer Line
- M - Completed Mixed Construction Line
- R - Completed Road as Line
- M - Planned Mixed Construction Line
- S - Planned Secondary Line
- 🔴 Fire Edge
- 🟩 Administrative FS Boundary
- 🟪 FS Wilderness Boundary



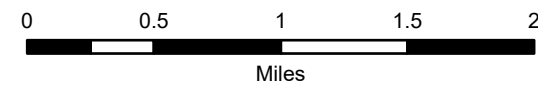


# Transportation Map

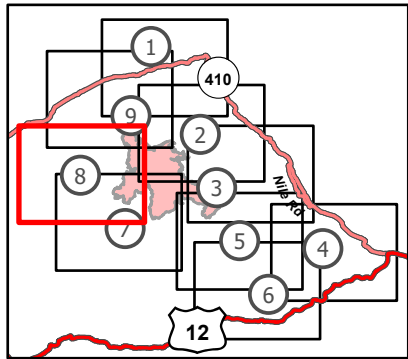
Schneider Springs  
WAOWF-000453  
8/17/2021

18,836 acres at 8/15/2021

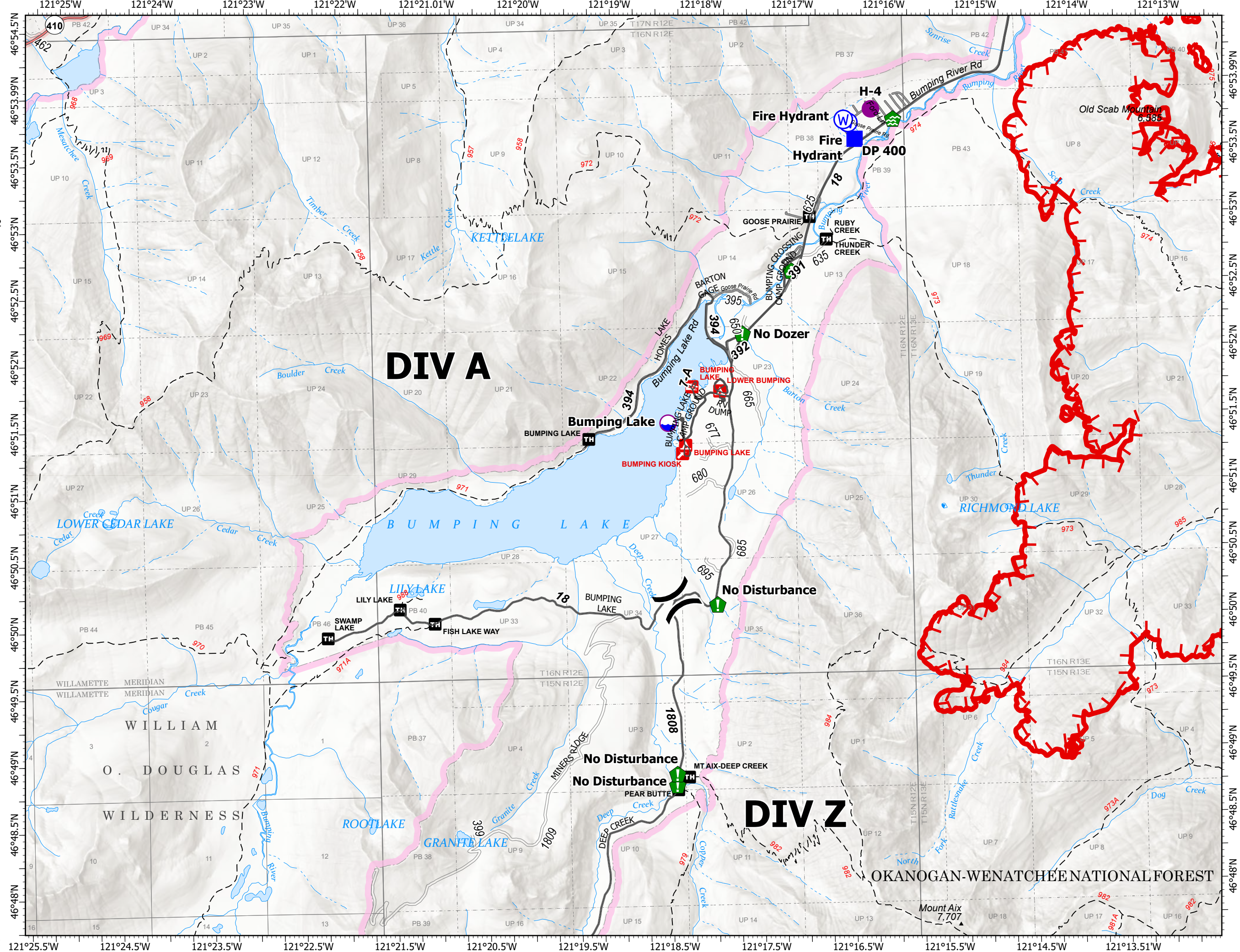
Page 8 of 9



- Dip Site
- Helispot
- Division Break
- Drop Point
- Water Development or Draft Site
- Resource Location
- Landing or Log Deck
- Water Source
- Fire Edge
- Administrative FS Boundary
- FS Wilderness Boundary



8/16/2021 1717  
Acres from IR  
North American 1983 Datum.  
LatLong Grid



**DIV A**

**DIV Z**

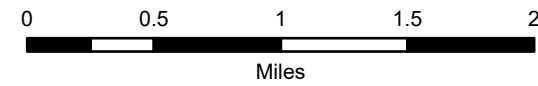
OKANOGAN-WENATCHEE NATIONAL FOREST

# Transportation Map

Schneider Springs  
 WAOWF-000453  
 8/17/2021

18,836 acres at 8/15/2021

Page 9 of 9



- Dip Site
- Helispot
- Division Break
- Drop Point
- Closure
- Lookout
- Value at Risk
- Water Development or Draft Site
- Landing or Log Deck
- Water Source
- Planned Fuel Break
- Fire Edge
- Administrative FS Boundary
- FS Wilderness Boundary

