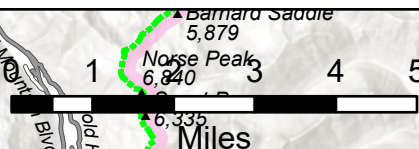


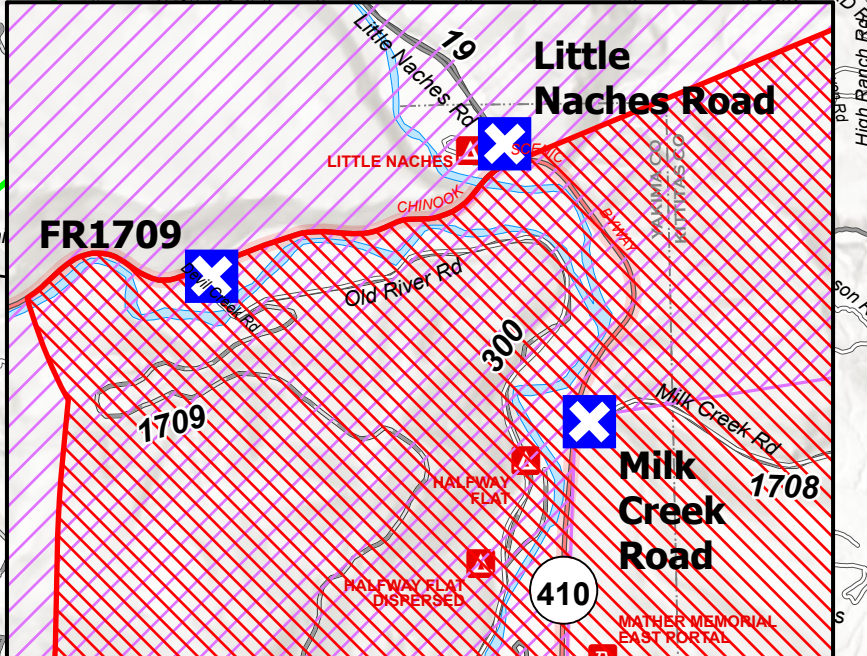
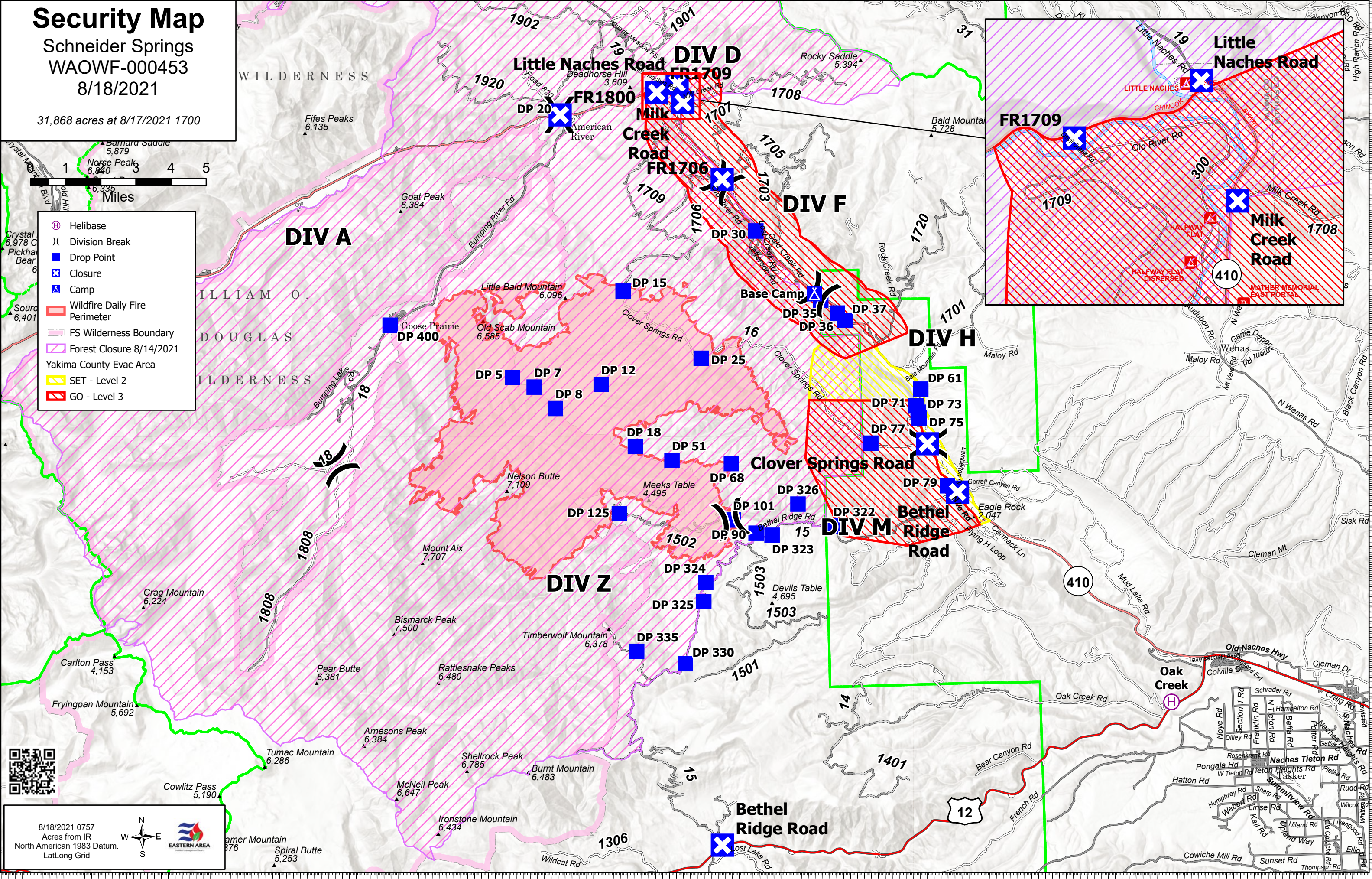
Security Map

Schneider Springs
WAOWF-000453
8/18/2021

31,868 acres at 8/17/2021 1700



- Helibase
- Division Break
- Drop Point
- Closure
- Camp
- Wildfire Daily Fire Perimeter
- FS Wilderness Boundary
- Forest Closure 8/14/2021
- Yakima County Evac Area
- SET - Level 2
- GO - Level 3



8/18/2021 0757
Acres from IR
North American 1983 Datum.
LatLong Grid