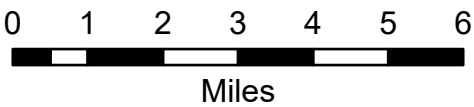


Transportation Map Index

Schneider Springs
WAOWF-000453
8/18/2021

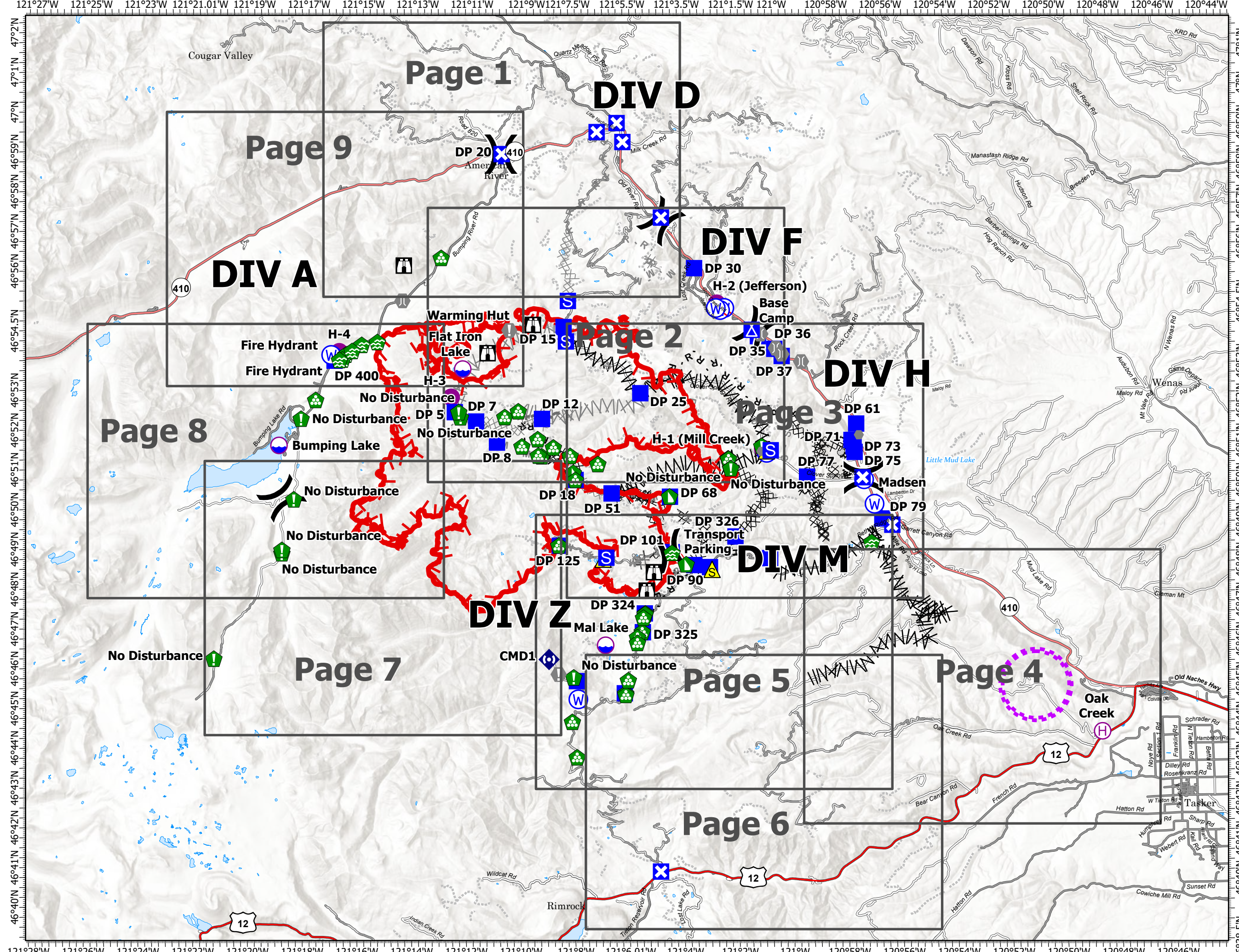
31,868 acres at 8/17/2021 1700



- Dip Site
- Helispot
- Helibase
- Division Break
- Drop Point
- Closure
- Camp
- Staging Area
- Lookout
- Value at Risk
- Other
- Bridge
- Water Development or Draft Site
- Resource Location
- Landing or Log Deck
- Dozer Push
- Repeater
- Safety Zone
- Water Source
- Restricted Water Source
- Completed Dozer Line
- Completed Fuel Break
- Completed Hand Line
- Completed Mixed Construction Line
- Completed Road as Line
- Planned Dozer Line
- Planned Fuel Break
- Planned Mixed Construction Line
- Planned Road as Line
- Planned Secondary Line
- Access or Improved Road
- Other
- UAS Launch and Recovery Zone
- Fire Edge
- Grid Index



DBurbank
8/18/2021 0538
Acres from IR
North American 1983 Datum.
Lat/Long Grid



46°40'N 46°41'N 46°42'N 46°43'N 46°44'N 46°45'N 46°46'N 46°47'N 46°48'N 46°49'N 46°50'N 46°51'N 46°52'N 46°53'N 46°54.5'N 46°56'N 46°57'N 46°58'N 46°59'N 47°N 47°1'N

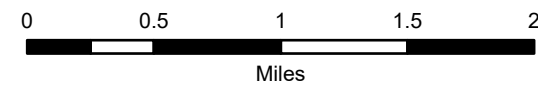
121°27'W 121°25'W 121°23'W 121°21.01'W 121°19'W 121°17'W 121°15'W 121°13'W 121°11'W 121°9'W 121°7.5'W 121°5.5'W 121°3.5'W 121°1.5'W 121°W 120°58'W 120°56'W 120°54'W 120°52'W 120°50'W 120°48'W 120°46'W 120°44'W

Transportation Map

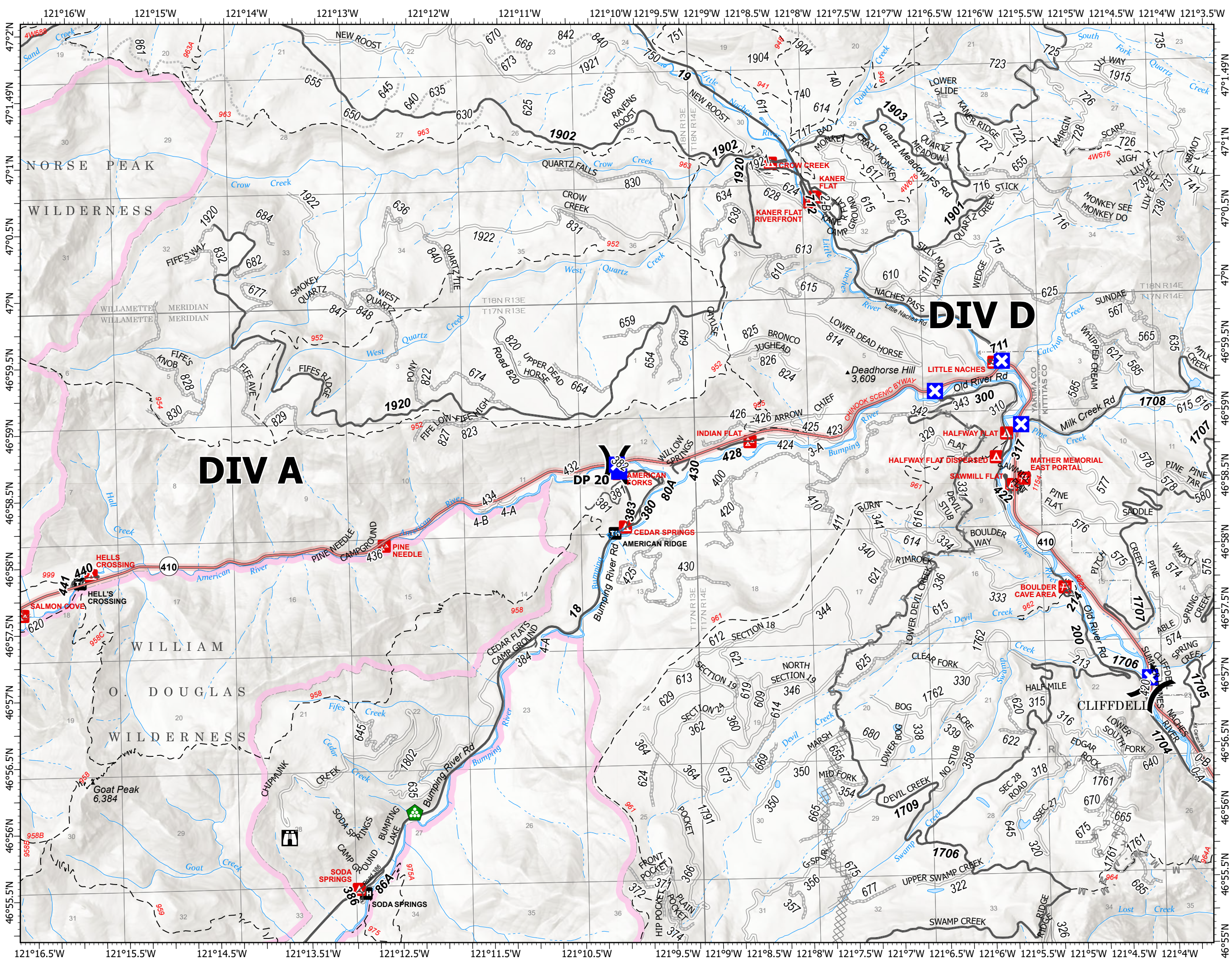
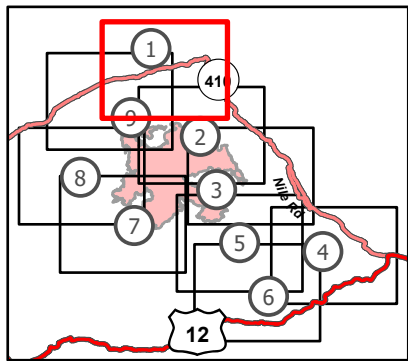
Schneider Springs
WAOWF-000453
8/18/2021

31,868 acres at 8/17/2021 1700

Page 1 of 9



- () Division Break
- Drop Point
- ⊠ Closure
- ⊞ Staging Area
- ⌚ Lookout
- ⚓ Bridge
- 🌲 Landing or Log Deck
- ⊗ Planned Dozer Line
- M - Planned Mixed Construction Line
- R - Planned Road as Line
- ▭ Administrative FS Boundary
- ▭ FS Wilderness Boundary

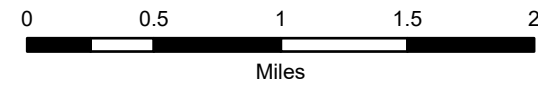


Transportation Map

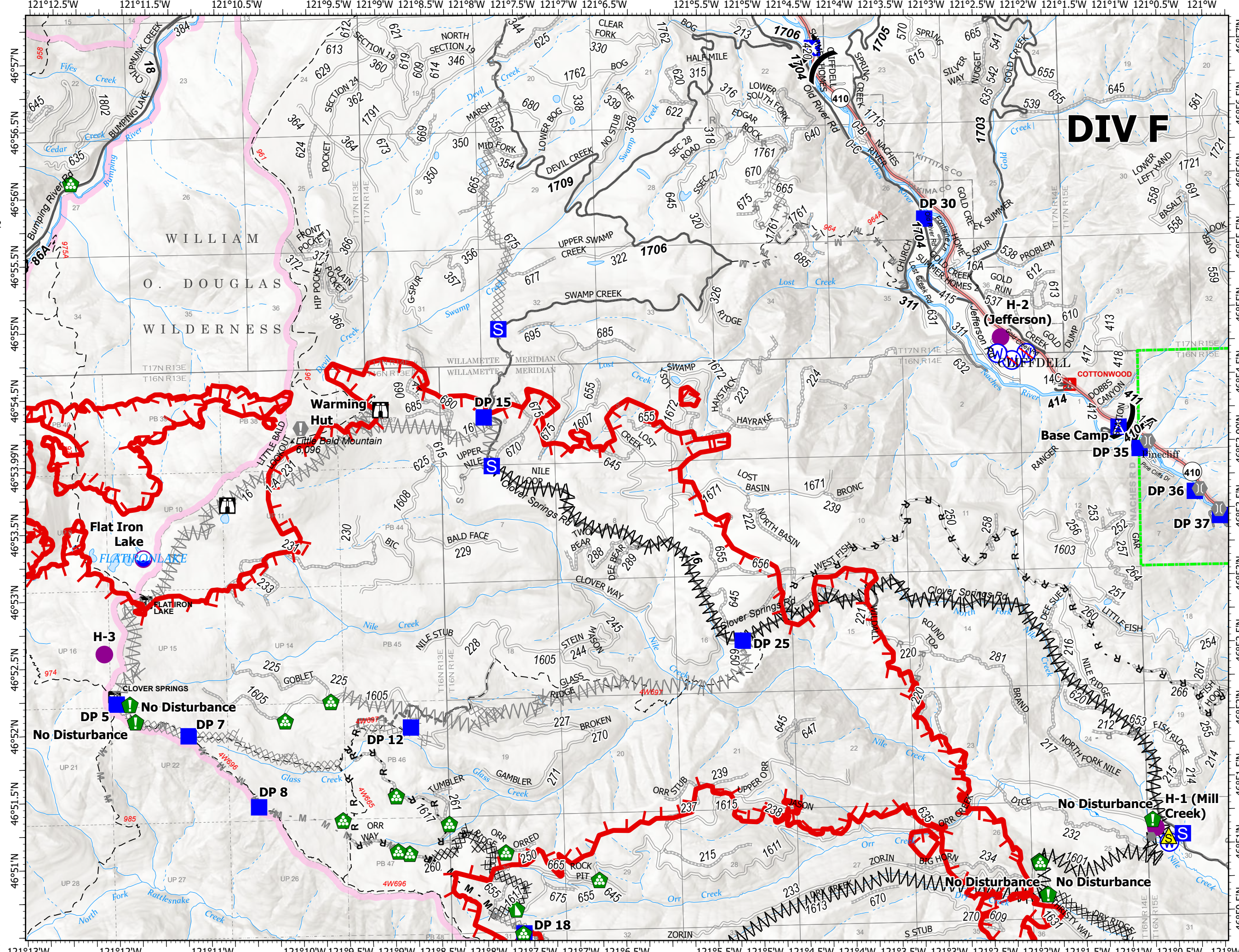
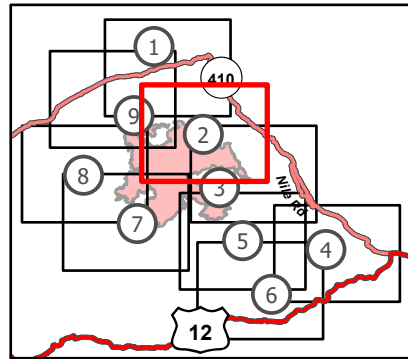
Schneider Springs
WAOWF-000453
8/18/2021

31,868 acres at 8/17/2021 1700

Page 2 of 9



- Dip Site
- Helispot
- Division Break
- Drop Point
- Closure
- Camp
- Staging Area
- Lookout
- Value at Risk
- Other
- Bridge
- Resource Location
- Landing or Log Deck
- Dozer Push
- Safety Zone
- Water Source
- Restricted Water Source
- Completed Dozer Line
- Completed Fuel Break
- Completed Mixed Construction Line
- Completed Road as Line
- Planned Dozer Line
- Planned Fuel Break
- Planned Mixed Construction Line
- Planned Road as Line
- Planned Secondary Line
- Other
- Fire Edge
- Administrative FS Boundary
- FS Wilderness Boundary



DIV F

No Disturbance

No Disturbance

No Disturbance H-1 (Mill Creek)

No Disturbance

No Disturbance

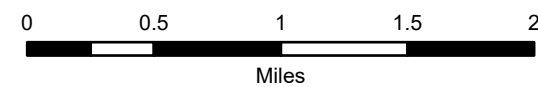


Transportation Map

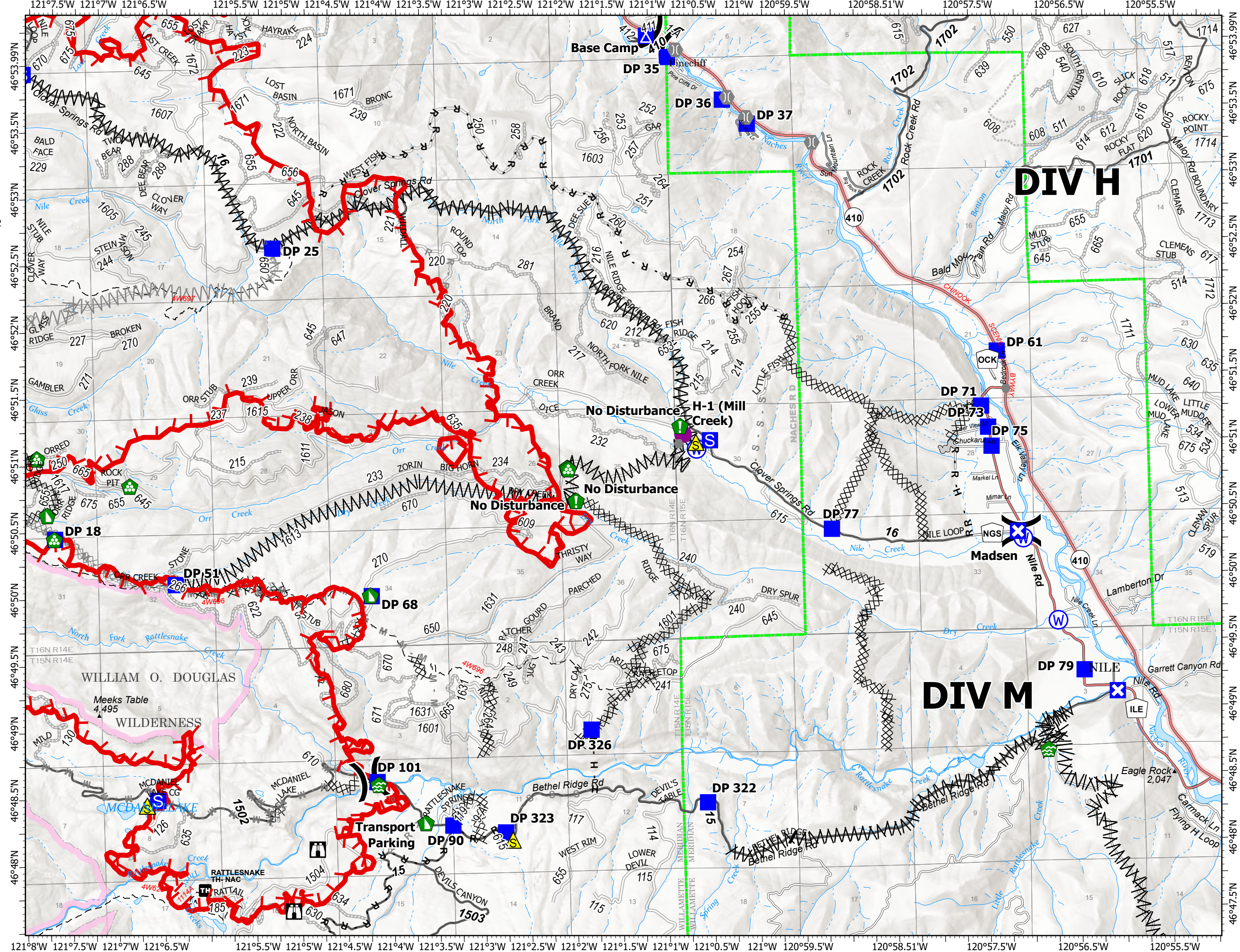
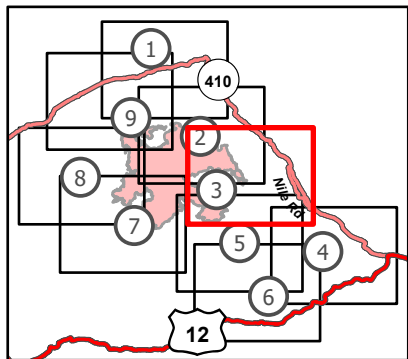
Schneider Springs
WAOWF-000453
8/18/2021

31,868 acres at 8/17/2021 1700

Page 3 of 9



- Helispot
-) Division Break
- Drop Point
- ⊗ Closure
- ⊠ Camp
- ⊞ Staging Area
- ⊞ Lookout
- Other
- ⊞ Bridge
- ⊞ Water Development or Draft Site
- ⊞ Resource Location
- ⊞ Landing or Log Deck
- ⊞ Dozer Push
- ⚠ Safety Zone
- ⊞ Water Source
- ⊞ Completed Dozer Line
- ⊞ Completed Fuel Break
- ⊞ Completed Hand Line
- ⊞ Completed Mixed Construction Line
- ⊞ Completed Road as Line
- ⊞ Planned Dozer Line
- ⊞ Planned Fuel Break
- ⊞ Planned Mixed Construction Line
- ⊞ Planned Road as Line
- ⊞ Planned Secondary Line
- Access or Improved Road
- Fire Edge
- Administrative FS Boundary
- FS Wilderness Boundary



Transportation Map

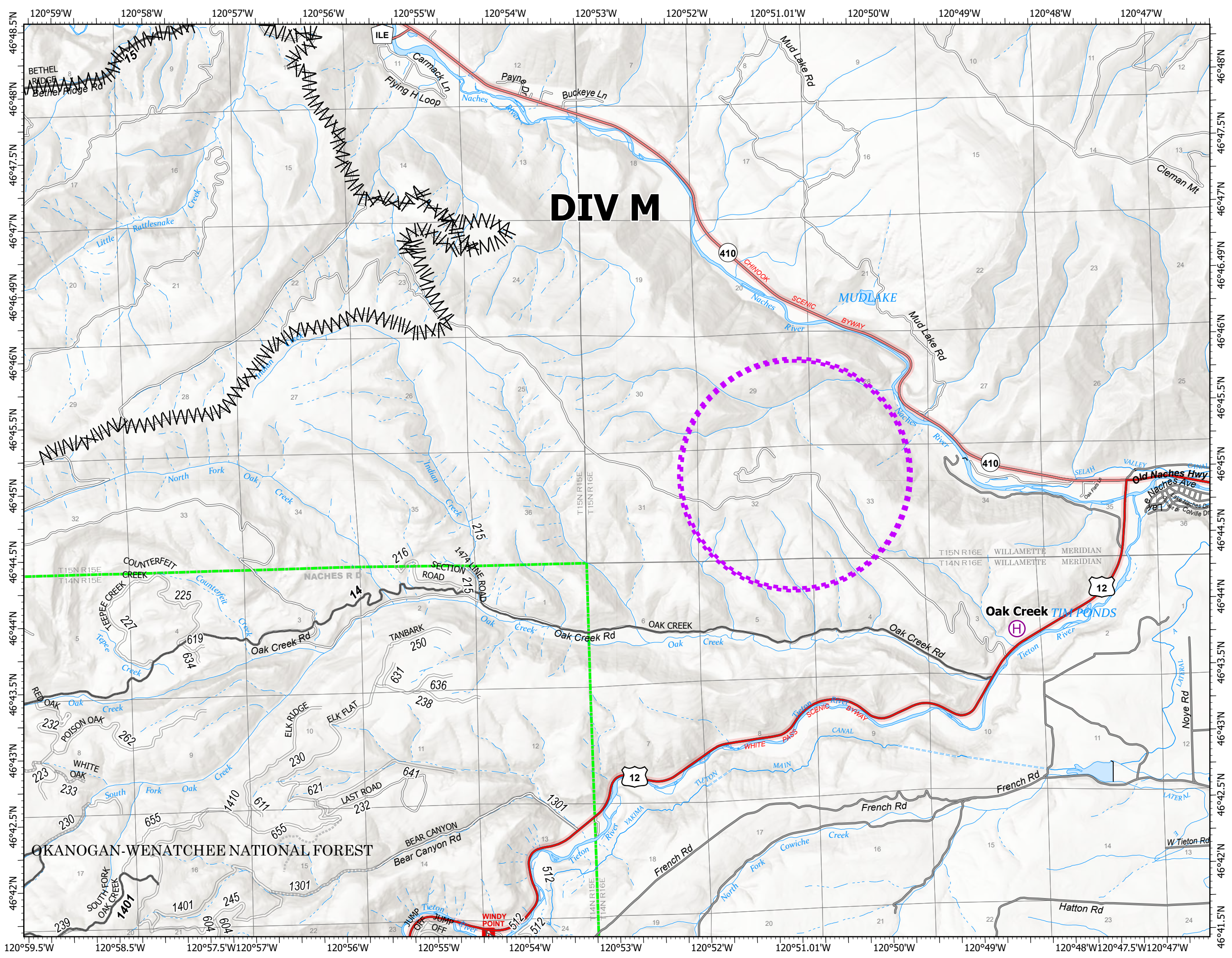
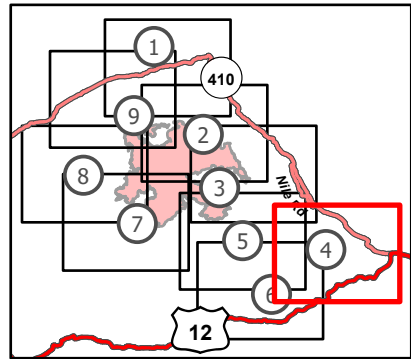
Schneider Springs
WAOWF-000453
8/18/2021

31,868 acres at 8/17/2021 1700

Page 4 of 9



- Helibase
- Water Development or Draft Site
- Completed Fuel Break
- UAS Launch and Recovery Zone
- Administrative FS Boundary



Transportation Map

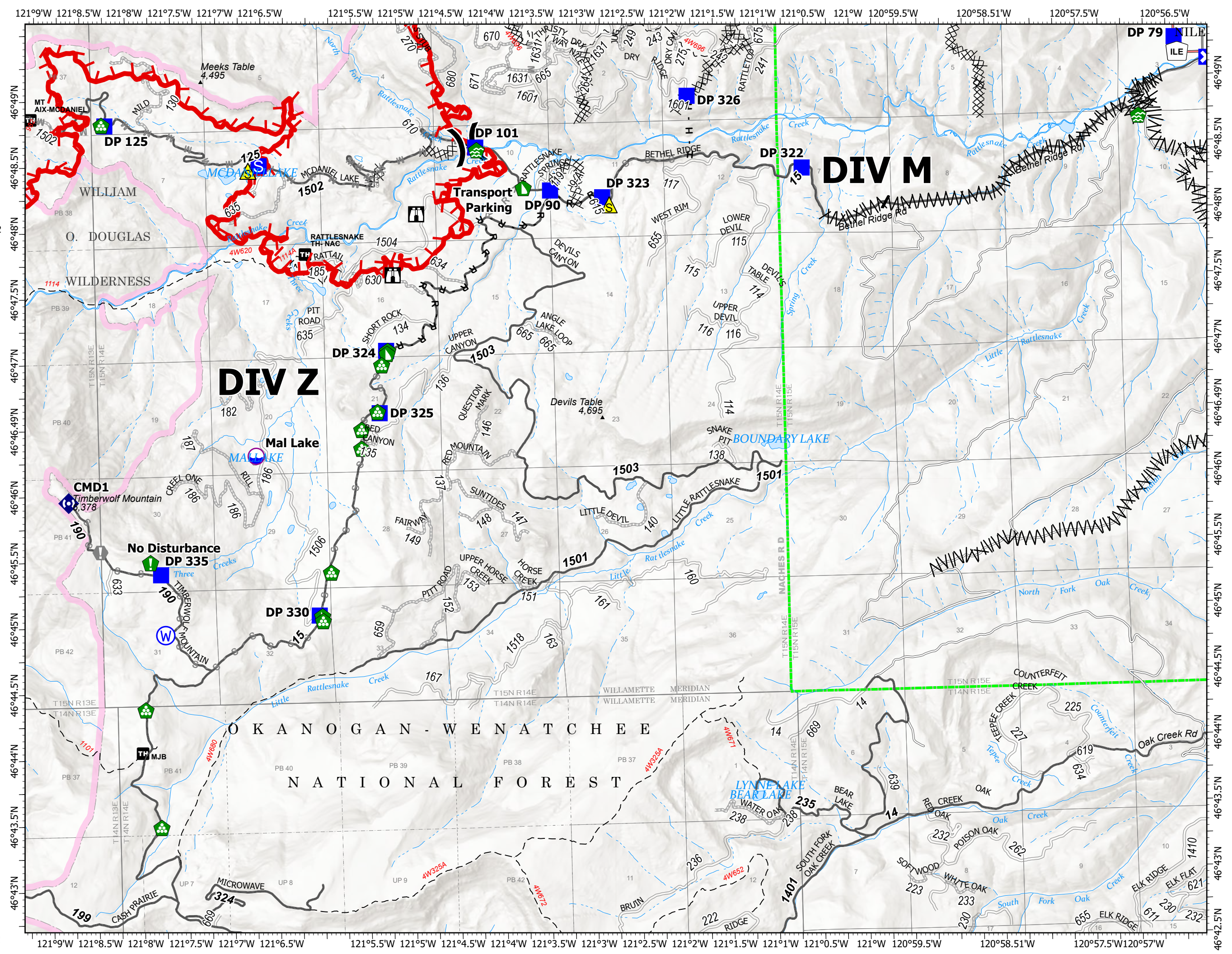
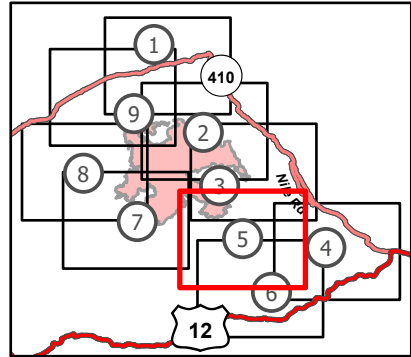
Schneider Springs
WAOWF-000453
8/18/2021

31,868 acres at 8/17/2021 1700

Page 5 of 9



- Dip Site
- Division Break
- Drop Point
- Closure
- Staging Area
- Lookout
- Value at Risk
- Water Development or Draft Site
- Resource Location
- Landing or Log Deck
- Dozer Push
- Repeater
- Safety Zone
- Water Source
- Completed Dozer Line
- Completed Fuel Break
- Completed Hand Line
- Completed Road as Line
- Planned Dozer Line
- Planned Mixed Construction Line
- Planned Road as Line
- Planned Secondary Line
- Other
- Fire Edge
- Administrative FS Boundary
- FS Wilderness Boundary

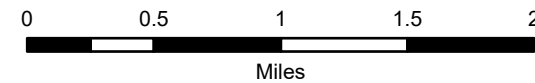


Transportation Map

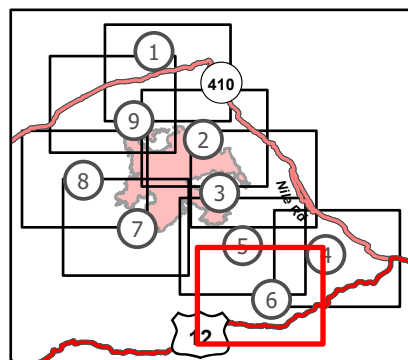
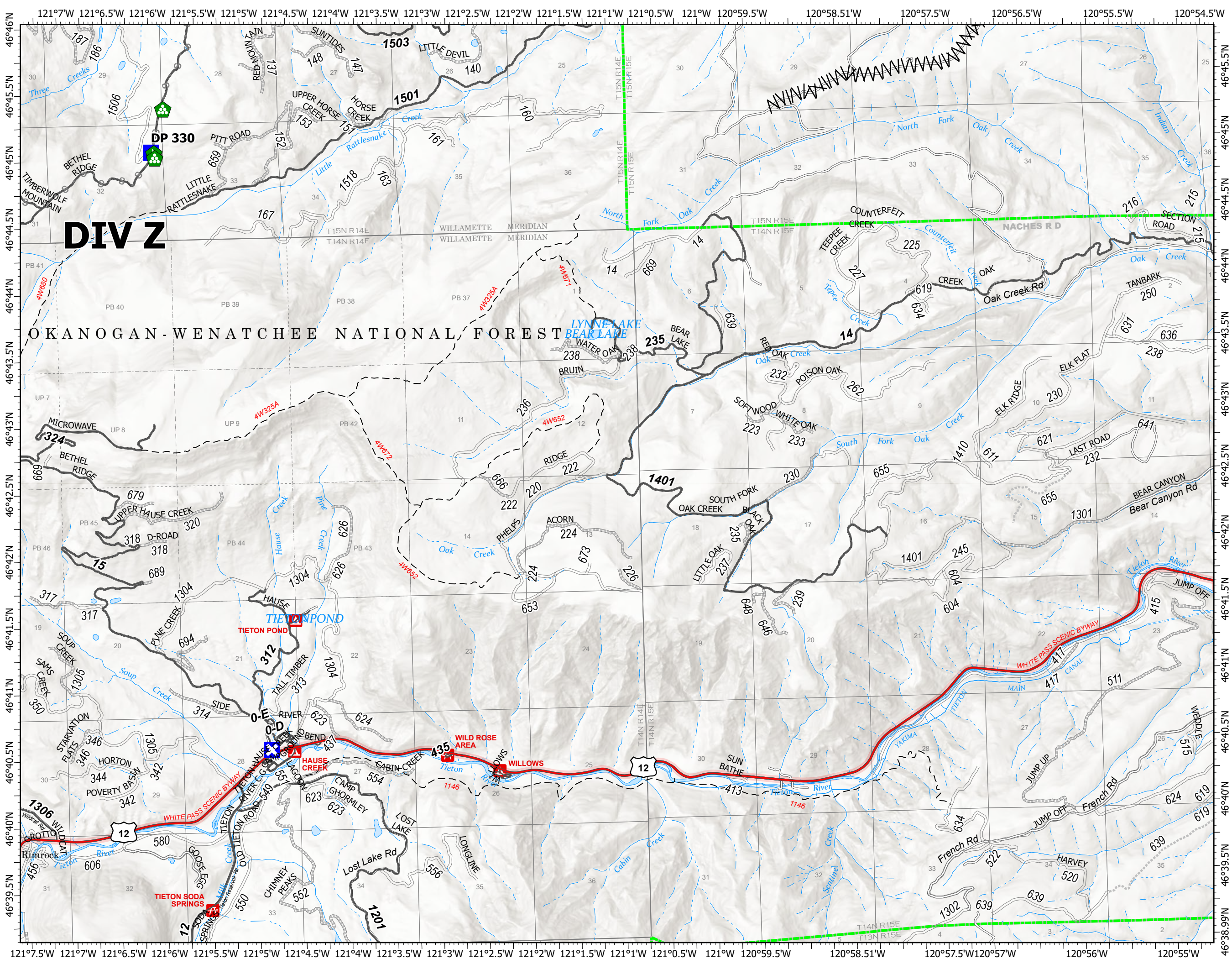
Schneider Springs
WAOWF-000453
8/18/2021

31,868 acres at 8/17/2021 1700

Page 6 of 9



- Drop Point
- ✕ Closure
- 🏠 Landing or Log Deck
- 🚧 Dozer Push
- Completed Fuel Break
- - - Planned Secondary Line
- ▭ Administrative FS Boundary

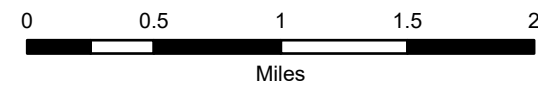


Transportation Map

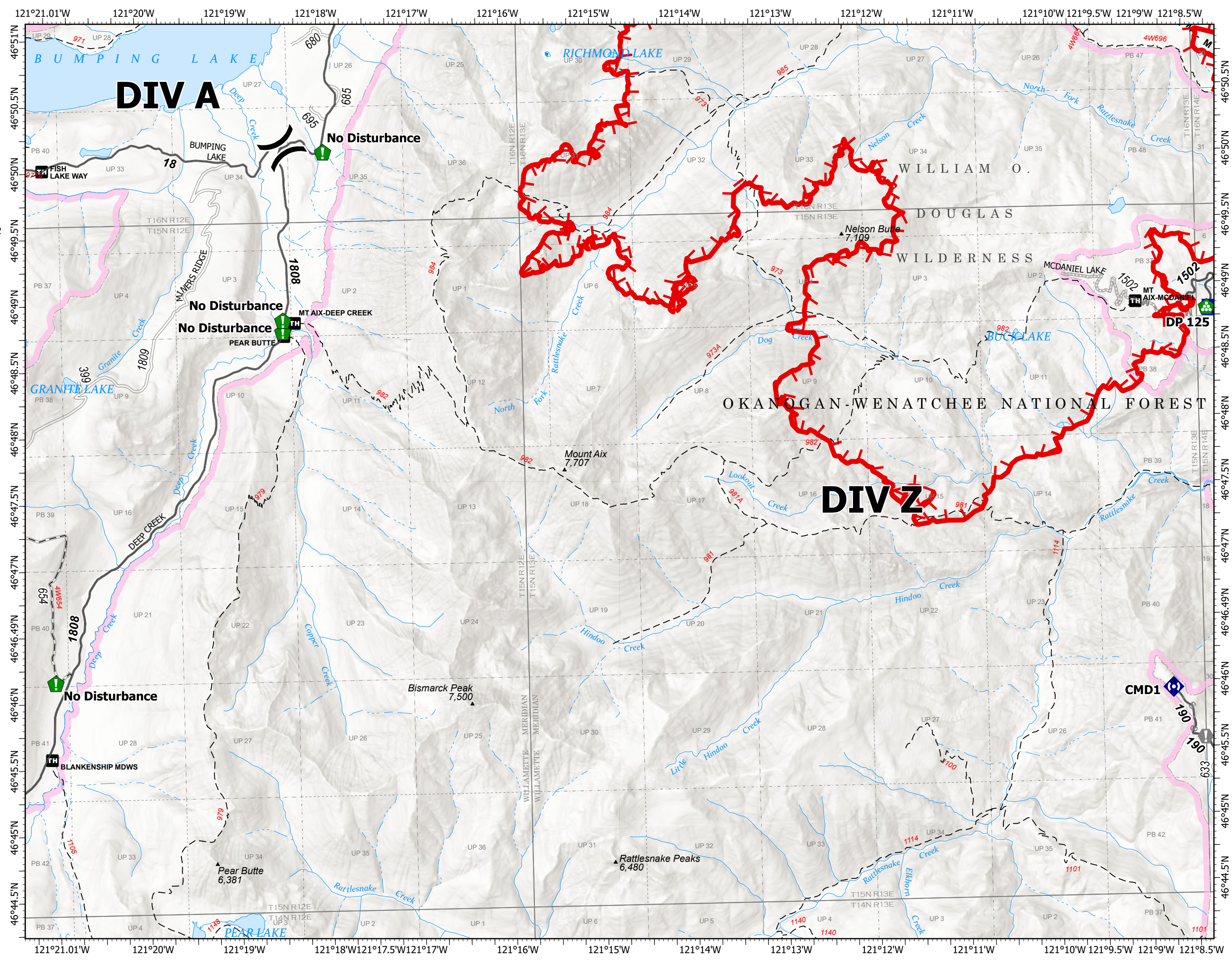
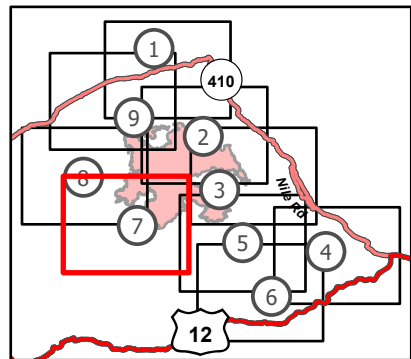
Schneider Springs
WAOWF-000453
8/18/2021

31,868 acres at 8/17/2021 1700

Page 7 of 9



- (X) Division Break
- Drop Point
- ⊕ Value at Risk
- 📍 Resource Location
- 🏠 Landing or Log Deck
- 📶 Repeater
- ⌘ Completed Dozer Line
- M - Completed Mixed Construction Line
- R - Completed Road as Line
- M - Planned Mixed Construction Line
- S - Planned Secondary Line
- 🔴 Fire Edge
- 🟩 Administrative FS Boundary
- 🟪 FS Wilderness Boundary

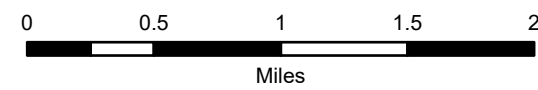


Transportation Map

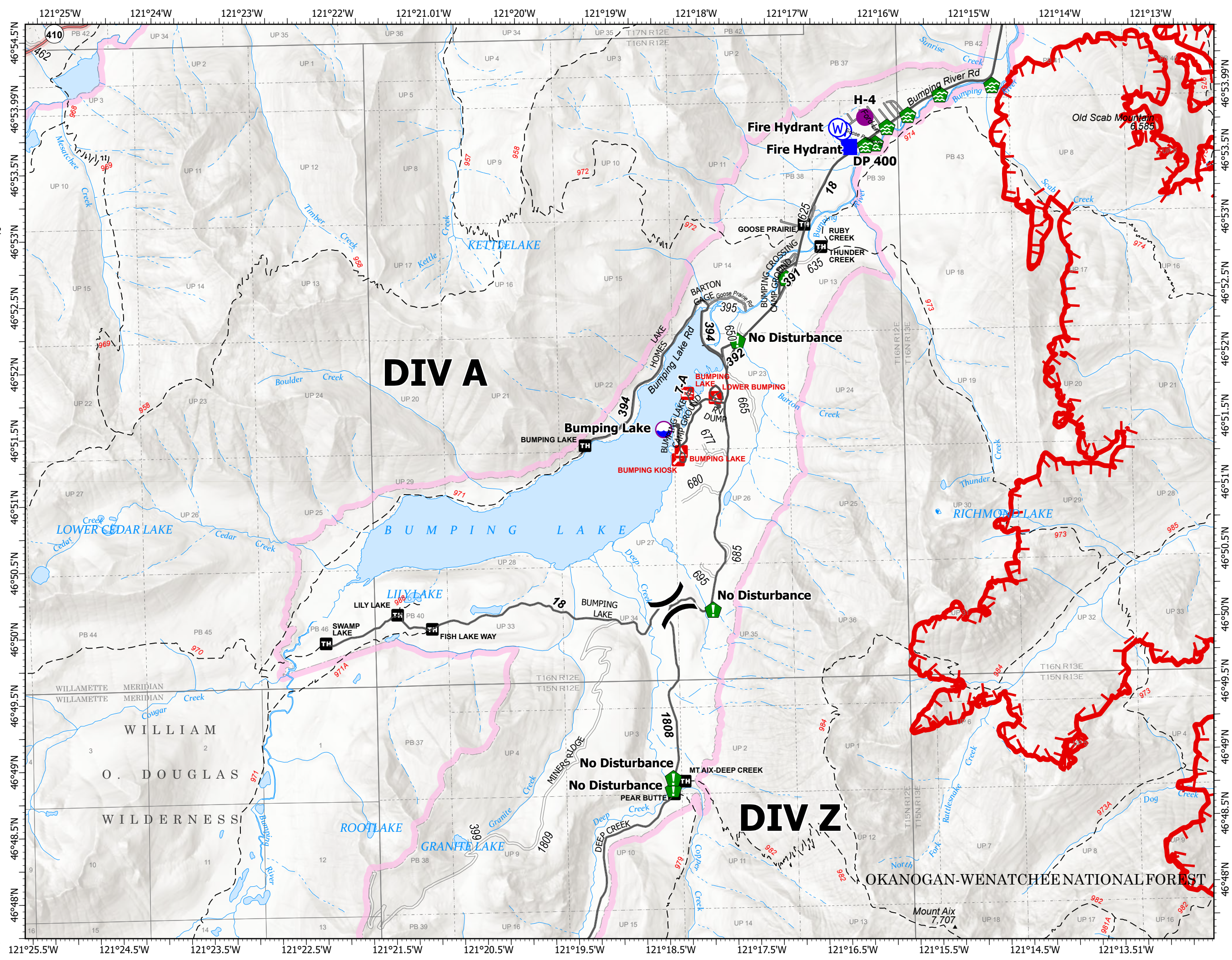
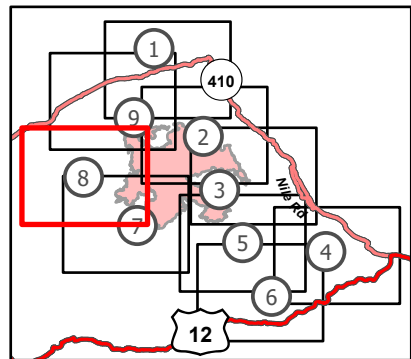
Schneider Springs
WAOWF-000453
8/18/2021

31,868 acres at 8/17/2021 1700

Page 8 of 9



- Dip Site
- Helispot
- Division Break
- Drop Point
- Water Development or Draft Site
- Resource Location
- Landing or Log Deck
- Water Source
- Fire Edge
- Administrative FS Boundary
- FS Wilderness Boundary

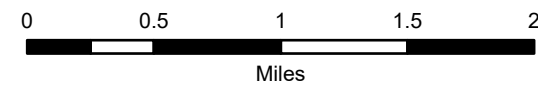


Transportation Map

Schneider Springs
WAOWF-000453
8/18/2021

31,868 acres at 8/17/2021 1700

Page 9 of 9



- Dip Site
- Helispot
- Division Break
- Drop Point
- Closure
- Lookout
- Value at Risk
- Bridge
- Water Development or Draft Site
- Landing or Log Deck
- Water Source
- Planned Fuel Break
- Fire Edge
- Administrative FS Boundary
- FS Wilderness Boundary

