

DIV A

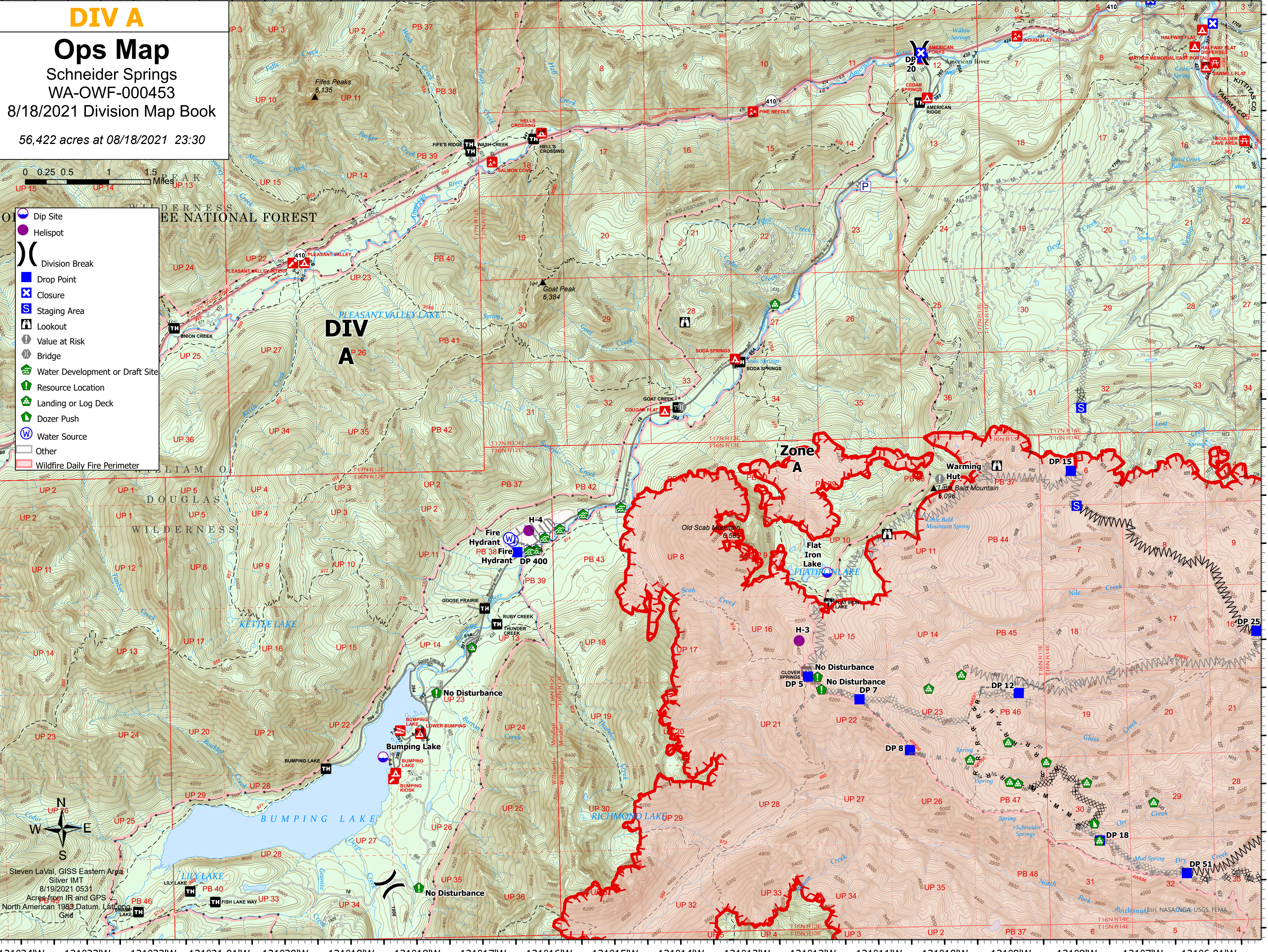
Ops Map

Schneider Springs
WA-OWF-000453
8/18/2021 Division Map Book

56,422 acres at 08/18/2021 23:30



- Dip Site
- Helispot
- Division Break
- Drop Point
- Closure
- Staging Area
- Lookout
- Value at Risk
- Bridge
- Water Development or Draft Site
- Resource Location
- Landing or Log Deck
- Dozer Push
- Water Source
- Other
- Wildfire Daily Fire Perimeter



Steven LaVal, GISS Eastern Area
Silver IMT
8/19/2021 0531
Acres from IR and GPS
North American 1983 Datum, Lat/Long
Grid

121°24'W 121°23'W 121°22'W 121°21.01'W 121°20'W 121°19'W 121°18'W 121°17'W 121°16'W 121°15'W 121°14'W 121°13'W 121°12'W 121°11'W 121°10'W 121°9'W 121°8'W 121°7'W 121°6.01'W

46°50'N 46°50.5'N 46°51'N 46°51.5'N 46°52'N 46°52.5'N 46°53'N 46°53.5'N 46°54'N 46°54.5'N 46°55'N 46°55.5'N 46°56'N 46°56.5'N 46°57'N 46°57.5'N 46°58'N 46°58.5'N 46°59'N

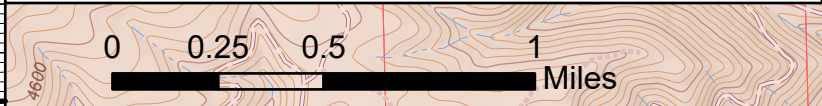
46°49.5'N 46°50'N 46°50.5'N 46°51'N 46°51.5'N 46°52'N 46°52.5'N 46°53'N 46°53.5'N 46°54'N 46°54.5'N 46°55'N 46°55.5'N 46°56'N 46°56.5'N 46°57'N 46°57.5'N 46°58'N 46°58.5'N 46°59'N

DIV M

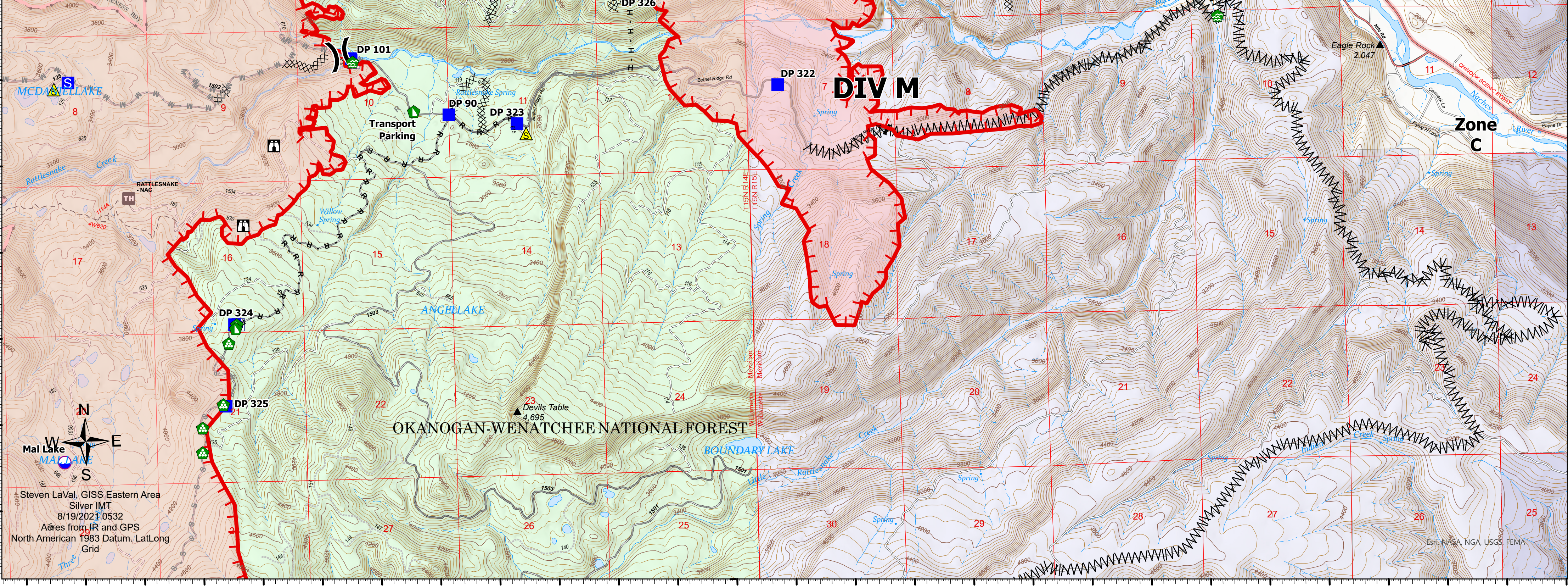
Ops Map

Schneider Springs
WA-OWF-000453
8/18/2021 Division Map Book

56,422 acres at 08/18/2021 23:30



- Dip Site
- Helispot
- Division Break
- Zone Break
- Drop Point
- Closure
- Staging Area
- Lookout
- Other
- Water Development or Draft Site
- Resource Location
- Landing or Log Deck
- Dozer Push
- Safety Zone
- Water Source
- Other
- Wildfire Daily Fire Perimeter



121°7'W 121°6.5'W 121°5.5'W 121°5'W 121°4.5'W 121°4'W 121°3.5'W 121°3'W 121°2.5'W 121°2'W 121°1.5'W 121°1'W 121°0.5'W 121°W 120°59.5'W 120°58.51'W 120°57.5'W 120°56.5'W 120°55.5'W 120°54.5'W

Steven LaVal, GISS Eastern Area
Silver IMT
8/19/2021 0532
Acres from IR and GPS
North American 1983 Datum, LatLong Grid

DIV Z

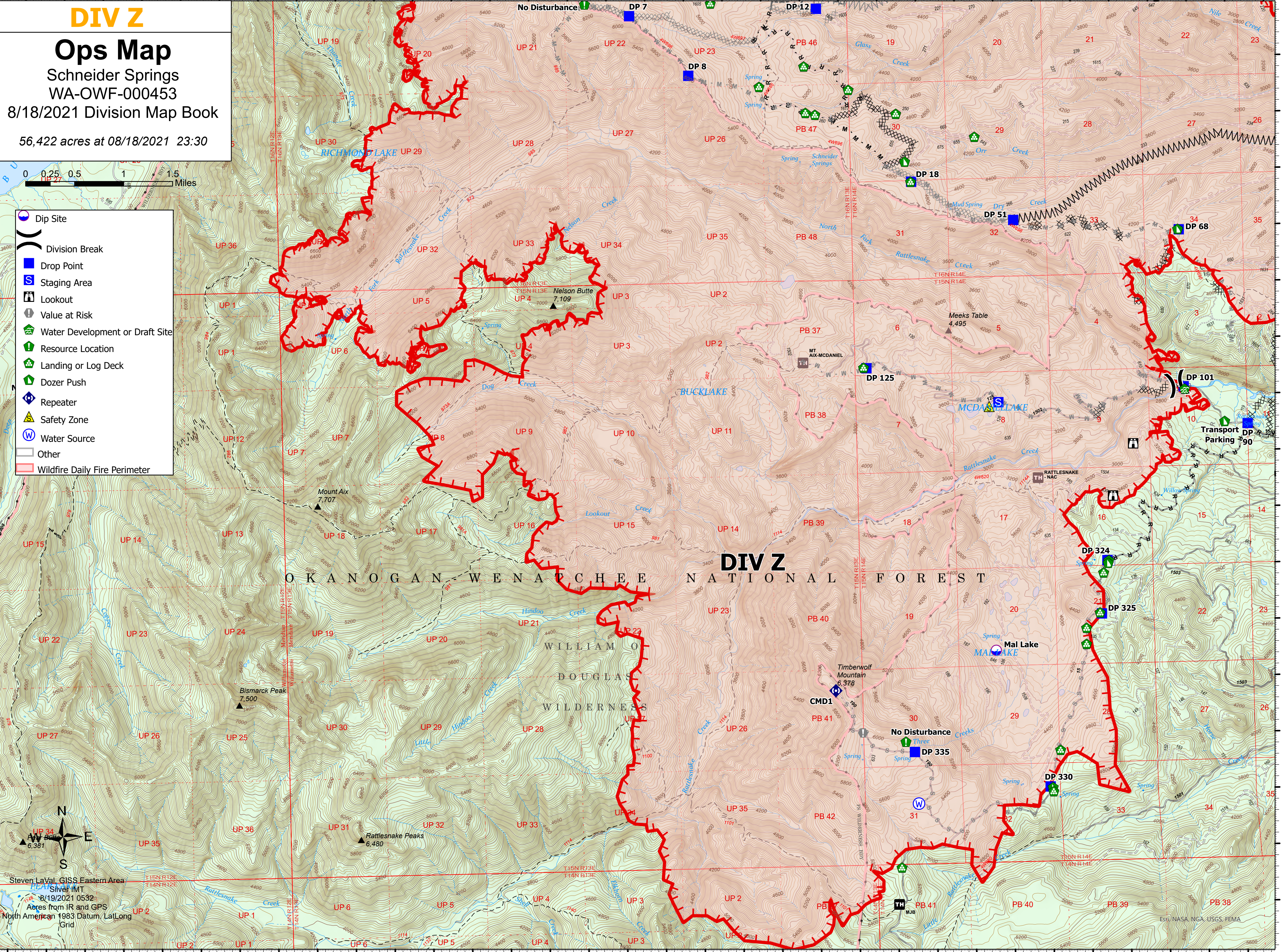
Ops Map

Schneider Springs
WA-OWF-000453
8/18/2021 Division Map Book

56,422 acres at 08/18/2021 23:30



- Dip Site
- Division Break
- Drop Point
- Staging Area
- Lookout
- Value at Risk
- Water Development or Draft Site
- Resource Location
- Landing or Log Deck
- Dozer Push
- Repeater
- Safety Zone
- Water Source
- Other
- Wildfire Daily Fire Perimeter



Steven LaVal, GISS Eastern Area
Silver IMT
8/19/2021 0532
Acres from IR and GPS
North American 1983 Datum, LatLong
Grid

DIV D

Ops Map

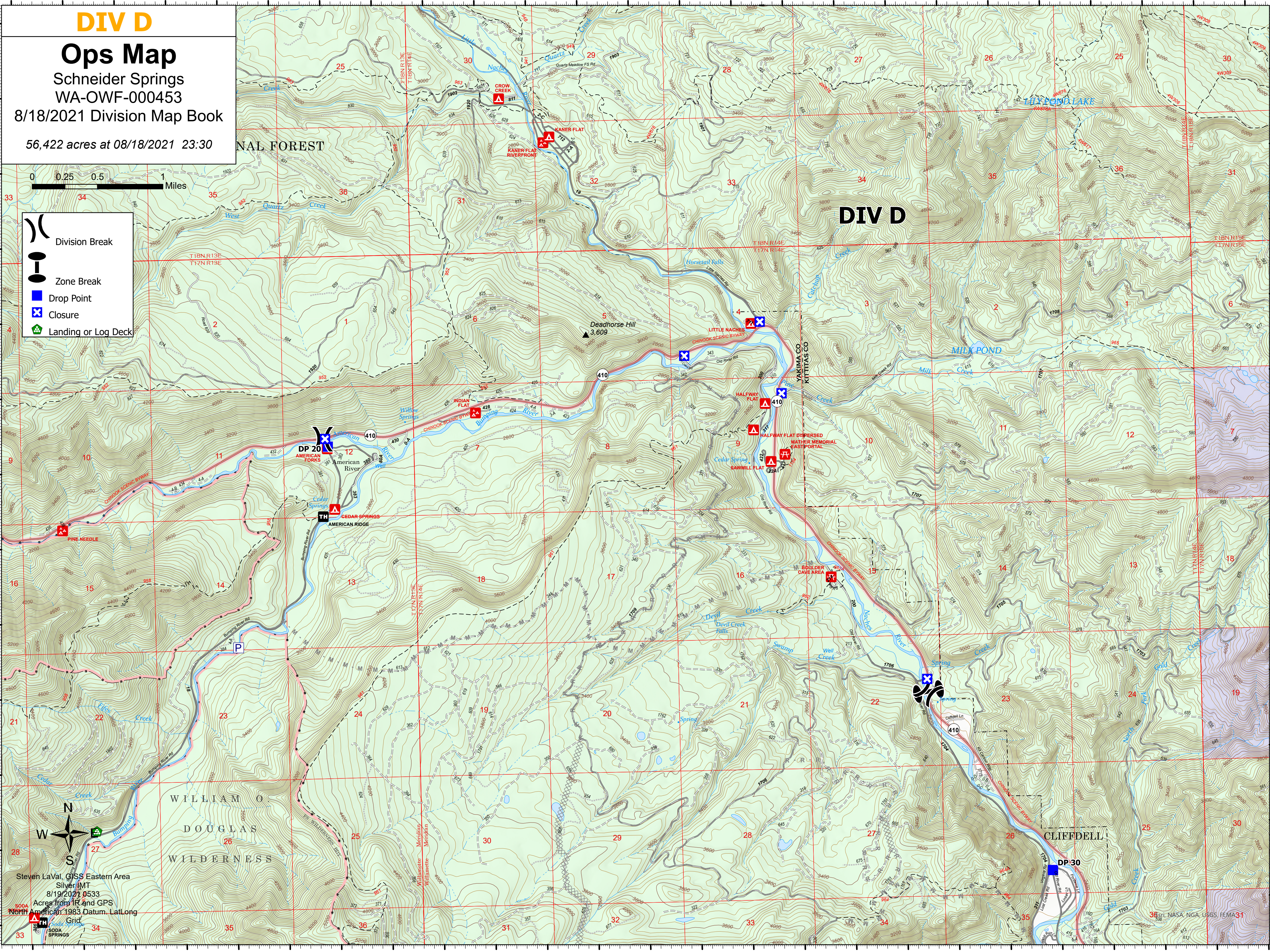
Schneider Springs
WA-OWF-000453

8/18/2021 Division Map Book

56,422 acres at 08/18/2021 23:30



- Division Break
- Zone Break
- Drop Point
- Closure
- Landing or Log Deck



Steven LaVal, GIS Eastern Area
Silver, MT
8/19/2021 0533
Acres from IR and GPS
North American 1983 Datum, LatLong
Grid

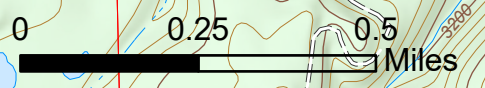
© 2021 NASA, NGA, USGS, FEMA

DIV F

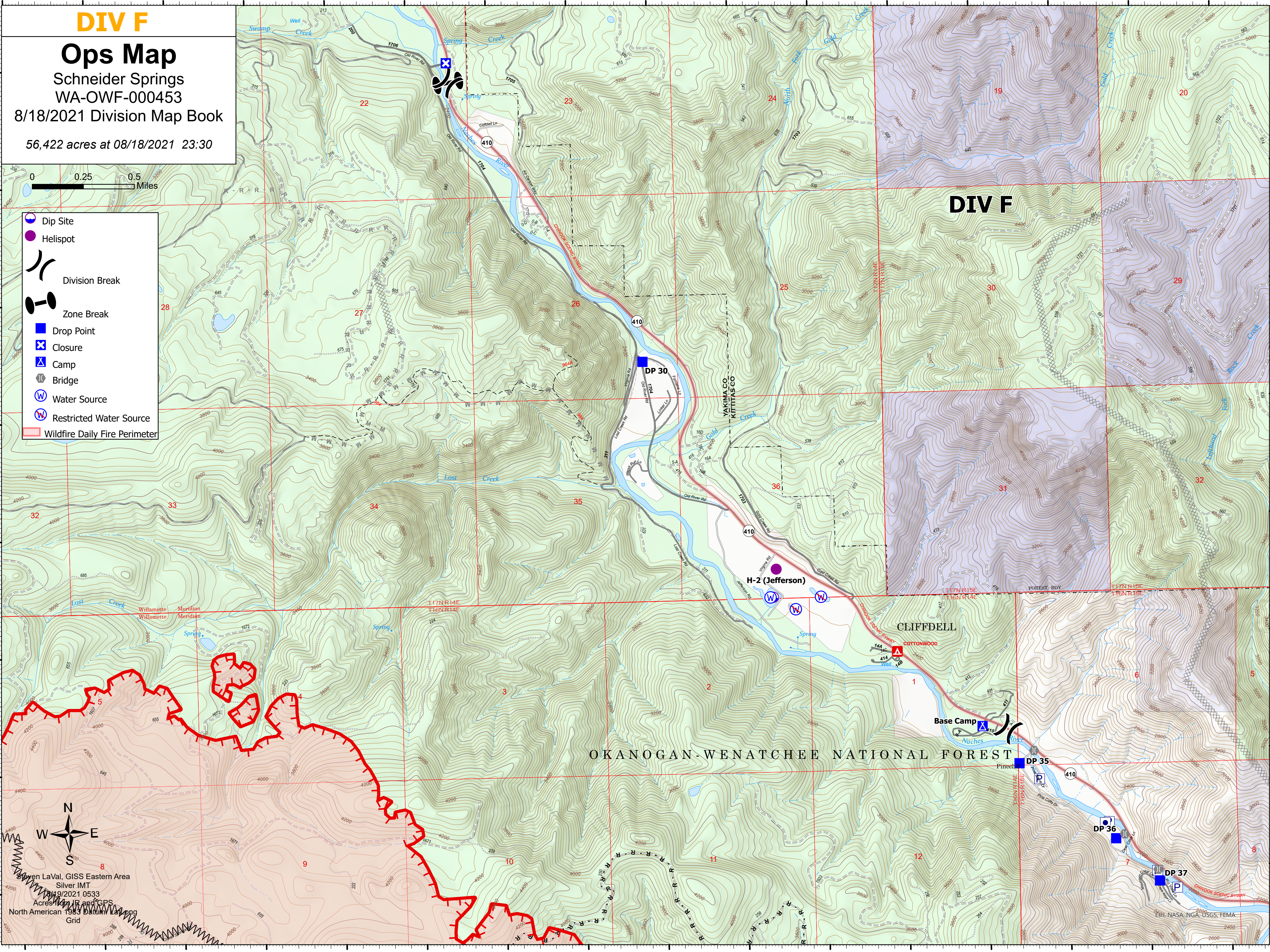
Ops Map

Schneider Springs
WA-OWF-000453
8/18/2021 Division Map Book

56,422 acres at 08/18/2021 23:30



- Dip Site
- Helispot
- Division Break
- Zone Break
- Drop Point
- Closure
- Camp
- Bridge
- Water Source
- Restricted Water Source
- Wildfire Daily Fire Perimeter



North Arrow

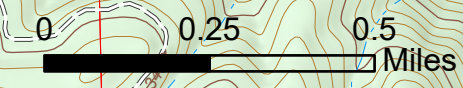
Steven LaVal, GISS Eastern Area
Silver IMT
8/19/2021 0533
Acres from IR and GPS
North American 1983 Datum
Grid

ESRI, NASA, NGA, USGS, FEMA

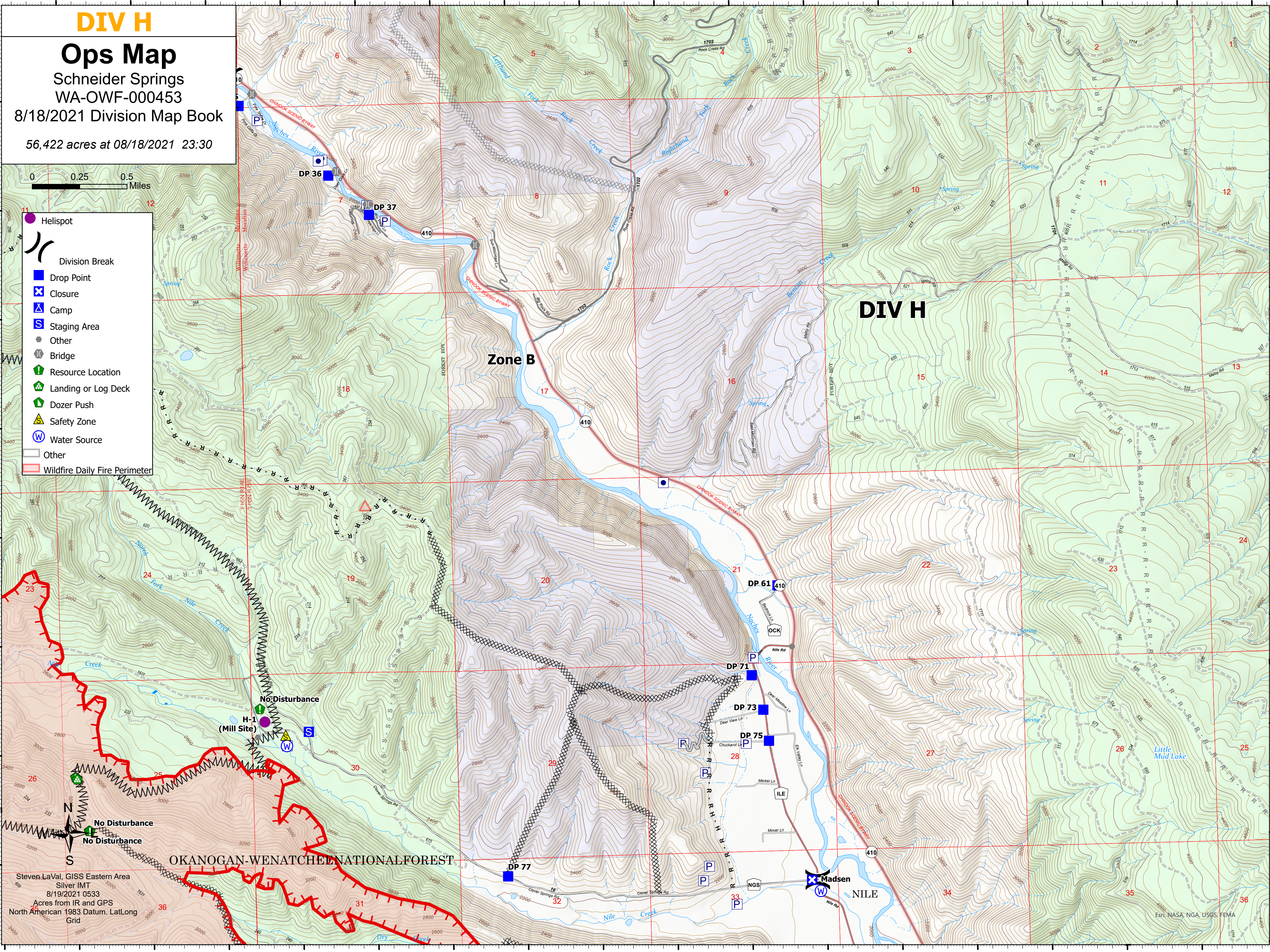
DIV H

Ops Map

Schneider Springs
WA-OWF-000453
8/18/2021 Division Map Book
56,422 acres at 08/18/2021 23:30



- Helispot
- Division Break
- Drop Point
- Closure
- Camp
- Staging Area
- Other
- Bridge
- Resource Location
- Landing or Log Deck
- Dozer Push
- Safety Zone
- Water Source
- Other
- Wildfire Daily Fire Perimeter



Steven LaVal, GISS Eastern Area
Silver IMT
8/19/2021 0533
Acres from IR and GPS
North American 1983 Datum, LatLong
Grid

OKANOGAN-WENACHEE NATIONAL FOREST

DIV H

Zone B

Madsen

NILE

No Disturbance

H-1
(Mill Site)

No Disturbance

No Disturbance

Esri, NASA, NGA, USGS, FEMA