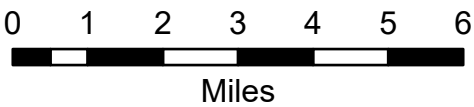


Transportation Map Index

Schneider Springs
WAOWF-000453
8/19/2021

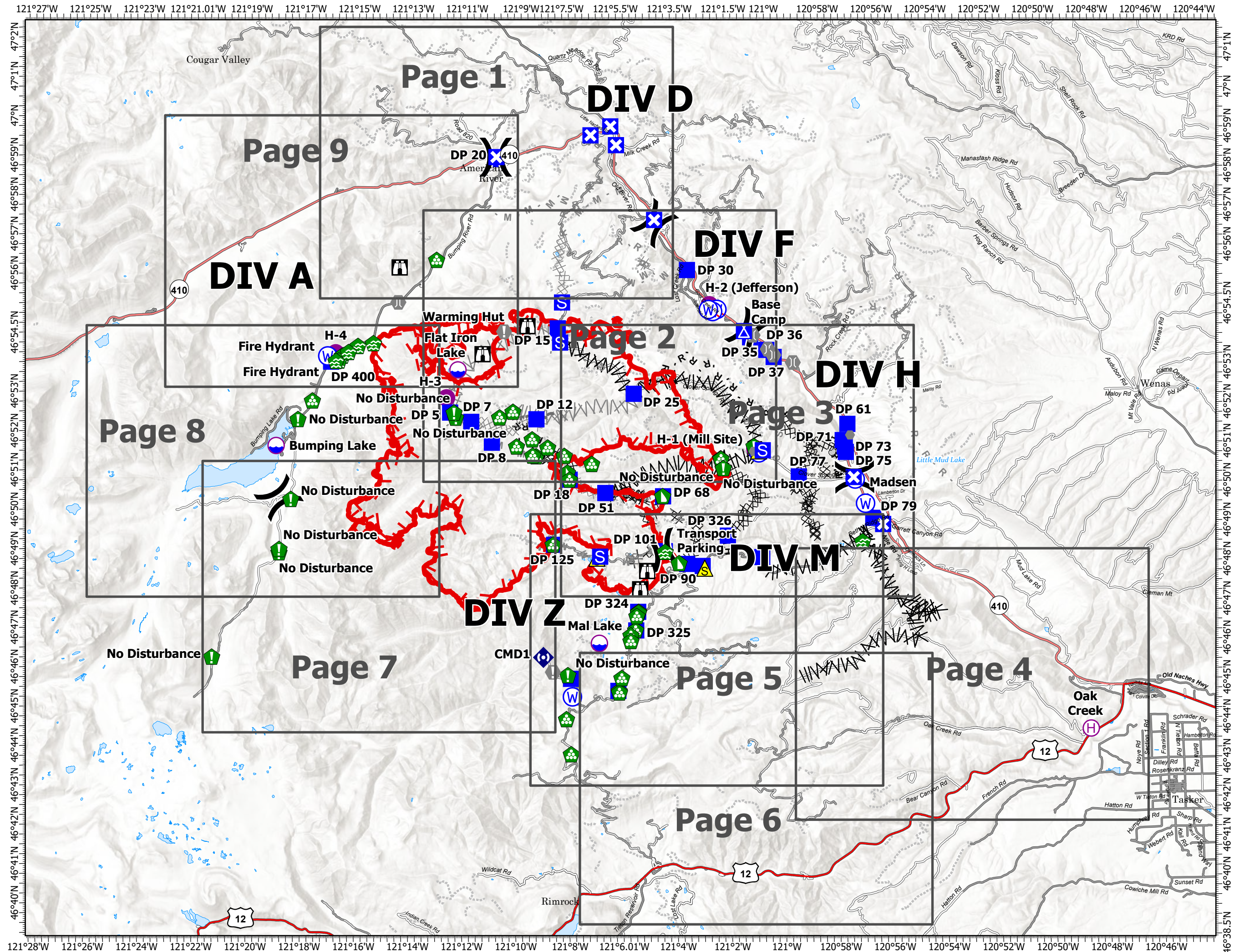
31,868 acres at 8/17/2021 1700



- Dip Site
- Helispot
- Helibase
- Division Break
- Drop Point
- Closure
- Camp
- Staging Area
- Lookout
- Value at Risk
- Other
- Bridge
- Water Development or Draft Site
- Resource Location
- Landing or Log Deck
- Dozer Push
- Repeater
- Safety Zone
- Water Source
- Restricted Water Source
- Completed Dozer Line
- Completed Fuel Break
- Completed Hand Line
- Completed Mixed Construction Line
- Completed Road as Line
- Planned Dozer Line
- Planned Fuel Break
- Planned Mixed Construction Line
- Planned Road as Line
- Planned Secondary Line
- Access or Improved Road
- Other
- Fire Edge
- Grid Index



DBurbank
8/18/2021 1616
Acres from IR
North American 1983 Datum.
Lat/Long Grid

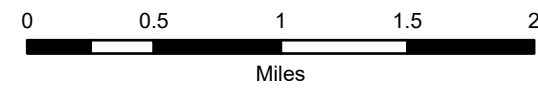


Transportation Map

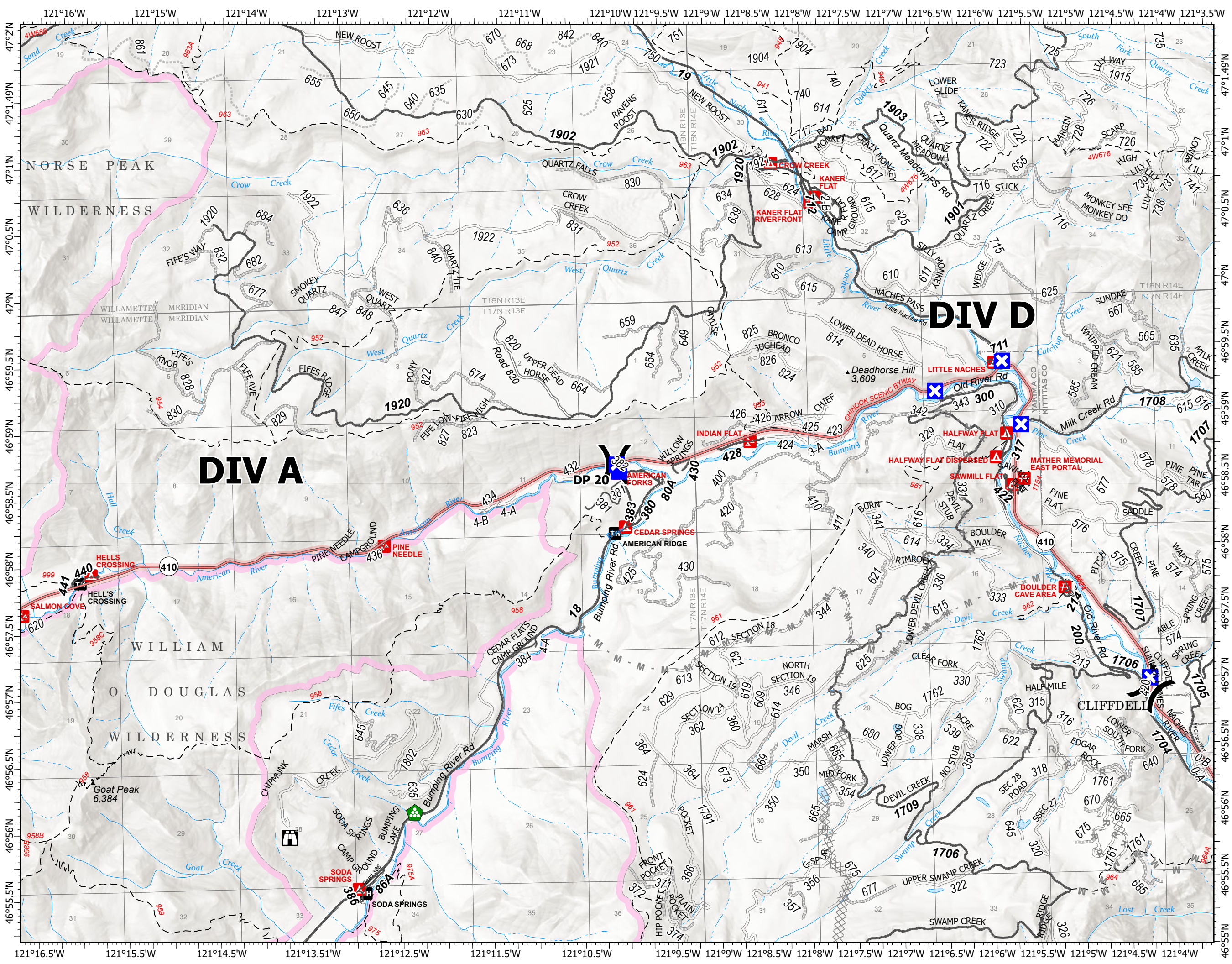
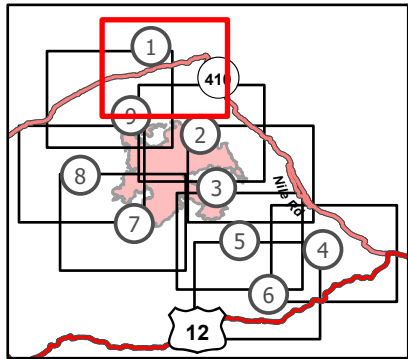
Schneider Springs
WAOWF-000453
8/19/2021

31,868 acres at 8/17/2021 1700

Page 1 of 9



- () Division Break
- Drop Point
- ⊠ Closure
- ⊡ Staging Area
- ⌂ Lookout
- ⬮ Bridge
- ⬮ Landing or Log Deck
- ⊠ Planned Dozer Line
- M - Planned Mixed Construction Line
- R - Planned Road as Line
- ▭ Administrative FS Boundary
- ▭ FS Wilderness Boundary

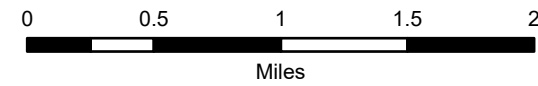


Transportation Map

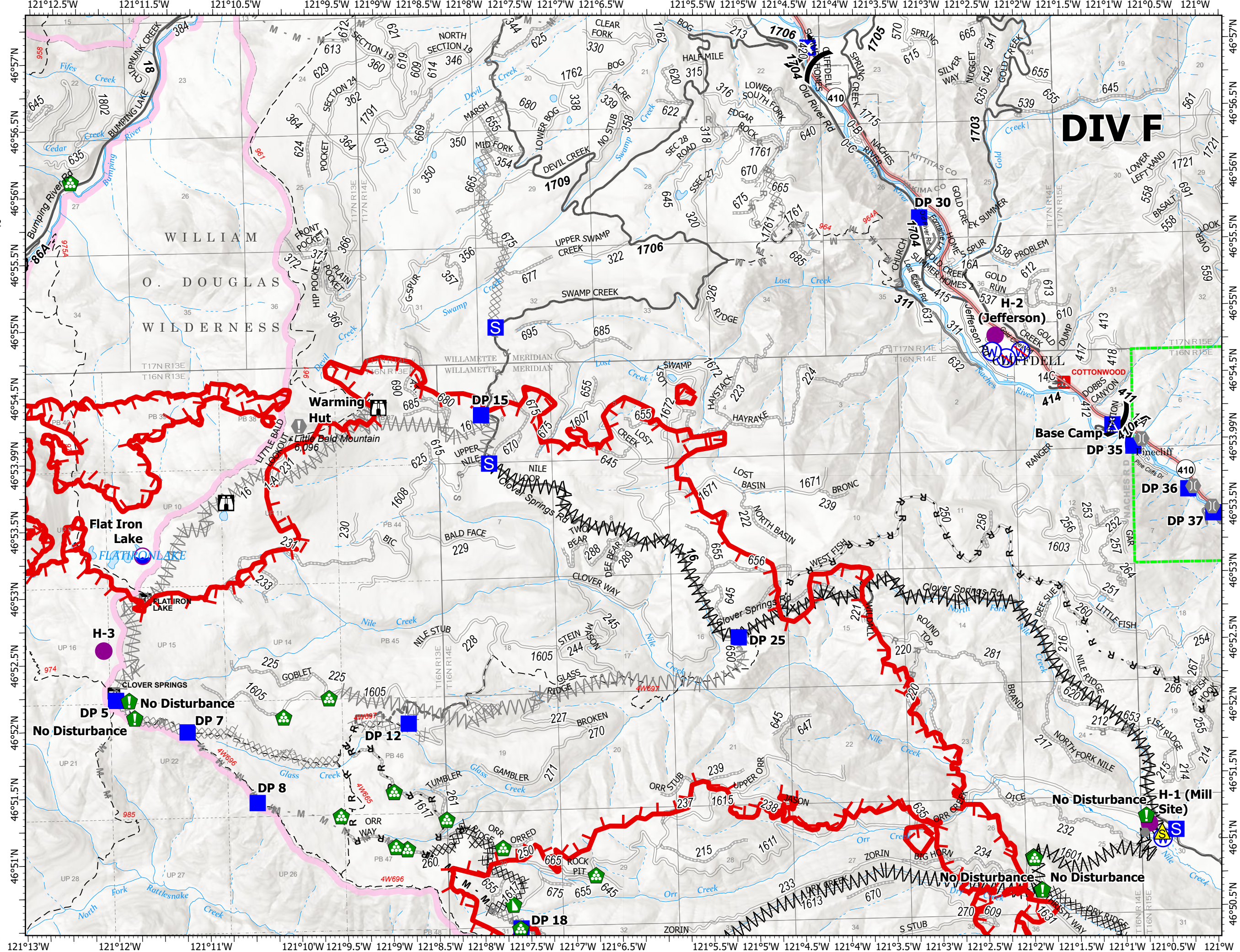
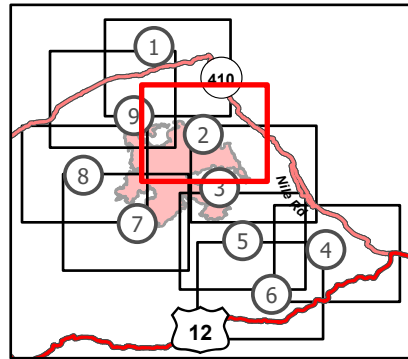
Schneider Springs
 WAOWF-000453
 8/19/2021

31,868 acres at 8/17/2021 1700

Page 2 of 9



- Dip Site
- Helispot
- Division Break
- Drop Point
- Closure
- Camp
- Staging Area
- Lookout
- Value at Risk
- Other
- Bridge
- Resource Location
- Landing or Log Deck
- Dozer Push
- Safety Zone
- Water Source
- Restricted Water Source
- Completed Dozer Line
- Completed Fuel Break
- Completed Mixed Construction Line
- Completed Road as Line
- Planned Dozer Line
- Planned Fuel Break
- Planned Mixed Construction Line
- Planned Road as Line
- Planned Secondary Line
- Other
- Fire Edge
- Administrative FS Boundary
- FS Wilderness Boundary



DIV F

No Disturbance

No Disturbance

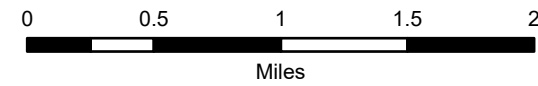
No Disturbance

Transportation Map

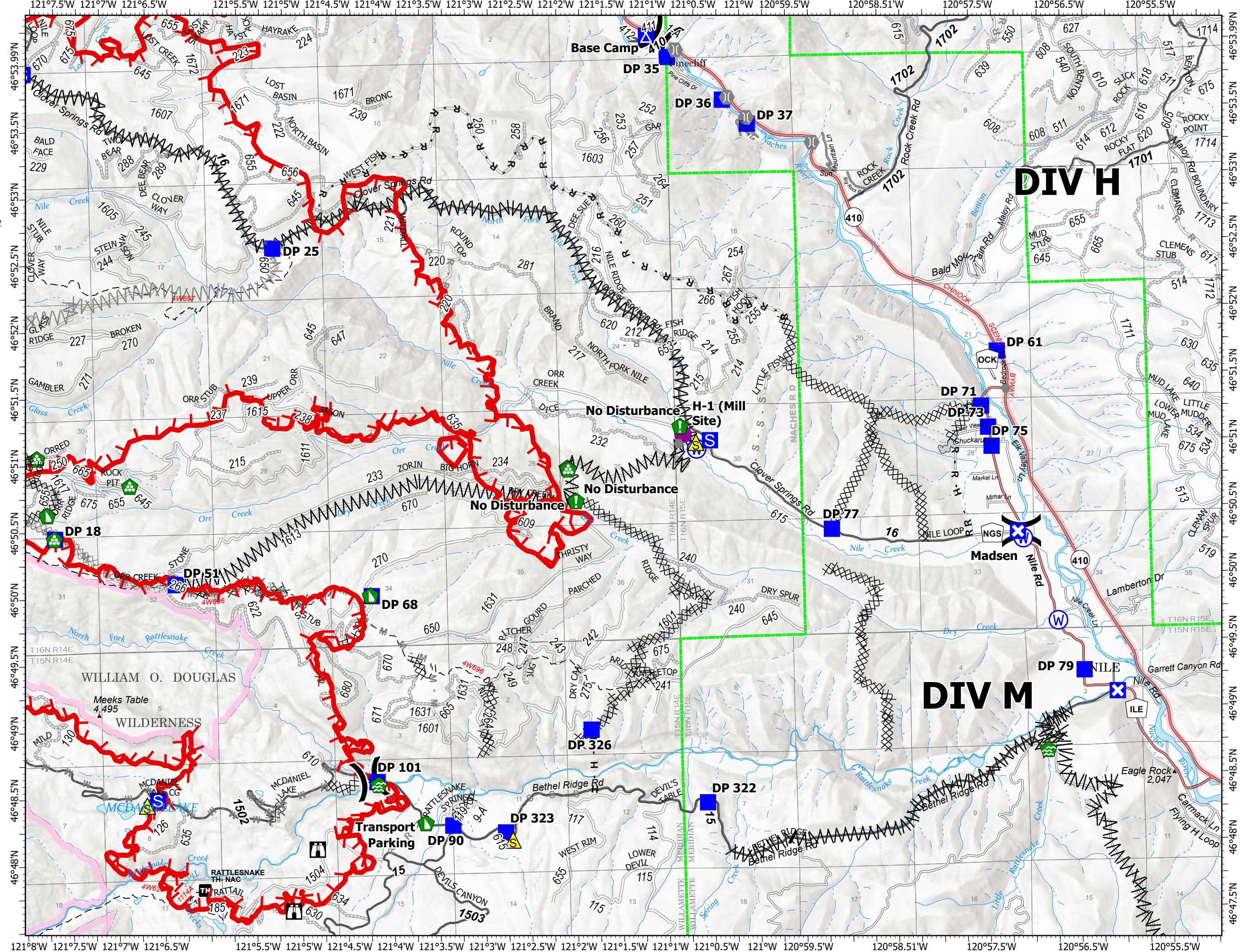
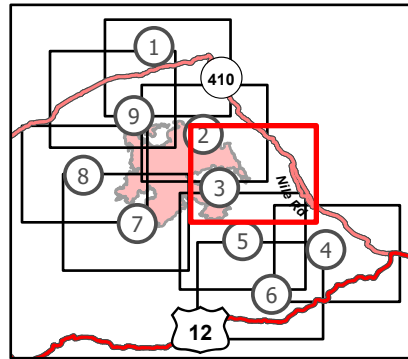
Schneider Springs
WAOWF-000453
8/19/2021

31,868 acres at 8/17/2021 1700

Page 3 of 9



- Helispot
-) Division Break
- Drop Point
- ✕ Closure
- ▲ Camp
- Staging Area
- ⌂ Lookout
- Other
- ⌂ Bridge
- 🏠 Water Development or Draft Site
- 📍 Resource Location
- 🏠 Landing or Log Deck
- 🚧 Dozer Push
- ⚠ Safety Zone
- Ⓜ Water Source
- ✂ Completed Dozer Line
- ⌂ Completed Fuel Break
- H Completed Hand Line
- M Completed Mixed Construction Line
- R Completed Road as Line
- ✂ Planned Dozer Line
- ⌂ Planned Fuel Break
- M Planned Mixed Construction Line
- R Planned Road as Line
- S Planned Secondary Line
- Access or Improved Road
- Fire Edge
- Administrative FS Boundary
- FS Wilderness Boundary



Transportation Map

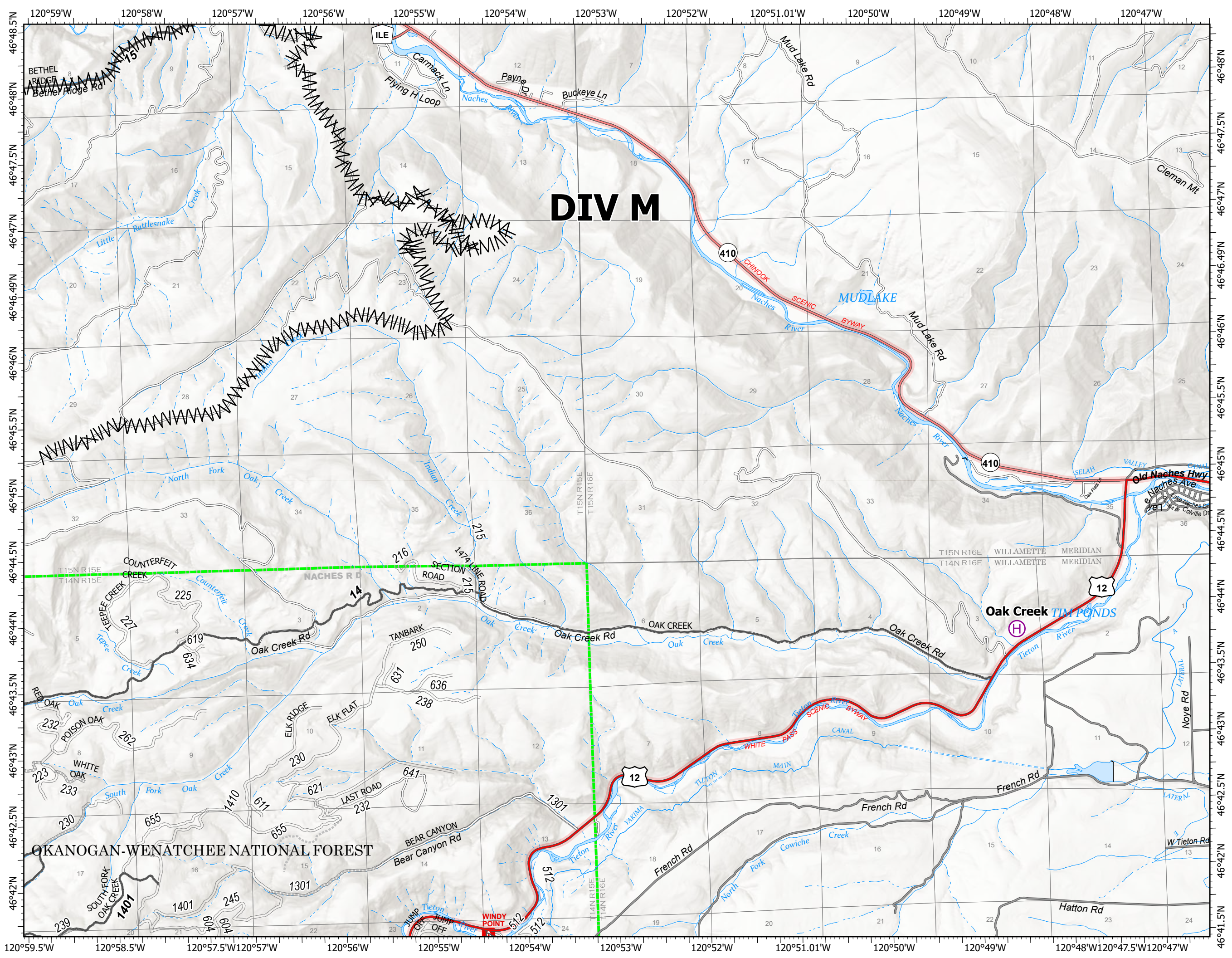
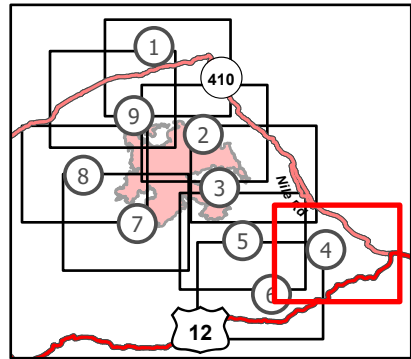
Schneider Springs
WAOWF-000453
8/19/2021

31,868 acres at 8/17/2021 1700

Page 4 of 9



- Helibase
- Water Development or Draft Site
- Completed Fuel Break
- Administrative FS Boundary



8/18/2021 1623
Acres from IR
North American 1983 Datum.
Lat/Long Grid

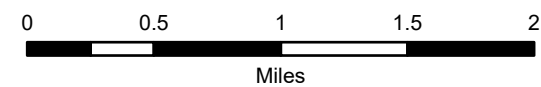


Transportation Map

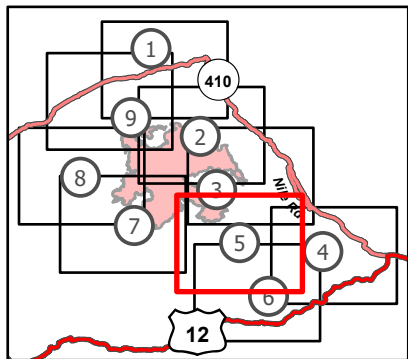
Schneider Springs
WAOWF-000453
8/19/2021

31,868 acres at 8/17/2021 1700

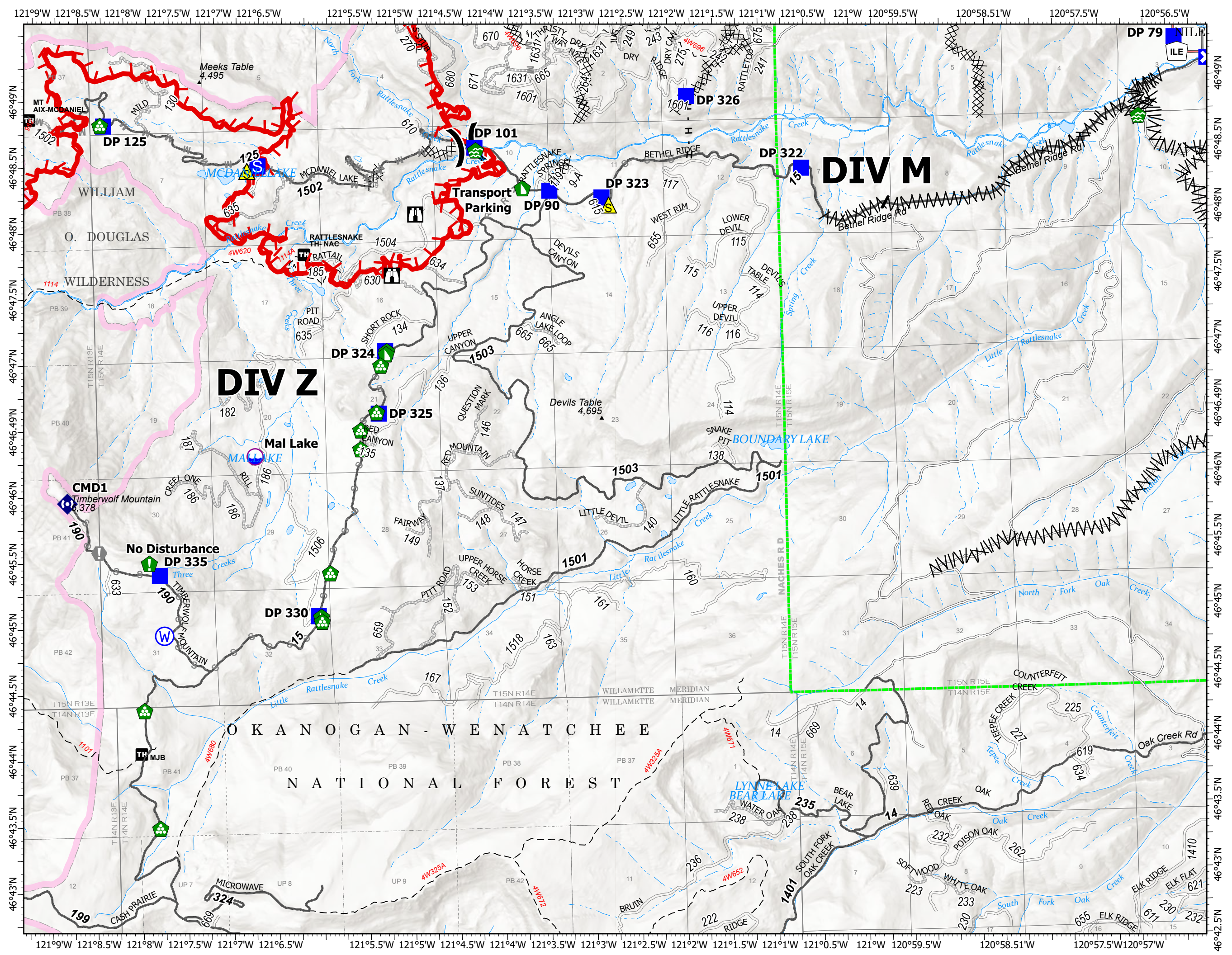
Page 5 of 9



- Dip Site
- Division Break
- Drop Point
- Closure
- Staging Area
- Lookout
- Value at Risk
- Water Development or Draft Site
- Resource Location
- Landing or Log Deck
- Dozer Push
- Repeater
- Safety Zone
- Water Source
- Completed Dozer Line
- Completed Fuel Break
- Completed Hand Line
- Planned Dozer Line
- Planned Mixed Construction Line
- Planned Road as Line
- Planned Secondary Line
- Other
- Fire Edge
- Administrative FS Boundary
- FS Wilderness Boundary



8/18/2021 1623
Acres from IR
North American 1983 Datum.
Lat/Long Grid



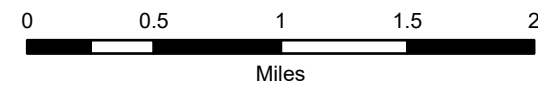
121°9'W 121°8.5'W 121°8'W 121°7.5'W 121°7'W 121°6.5'W 121°5.5'W 121°5'W 121°4.5'W 121°4'W 121°3.5'W 121°3'W 121°2.5'W 121°2'W 121°1.5'W 121°1'W 121°0.5'W 121°W 120°59.5'W 120°58.51'W 120°57.5'W 120°56.5'W

Transportation Map

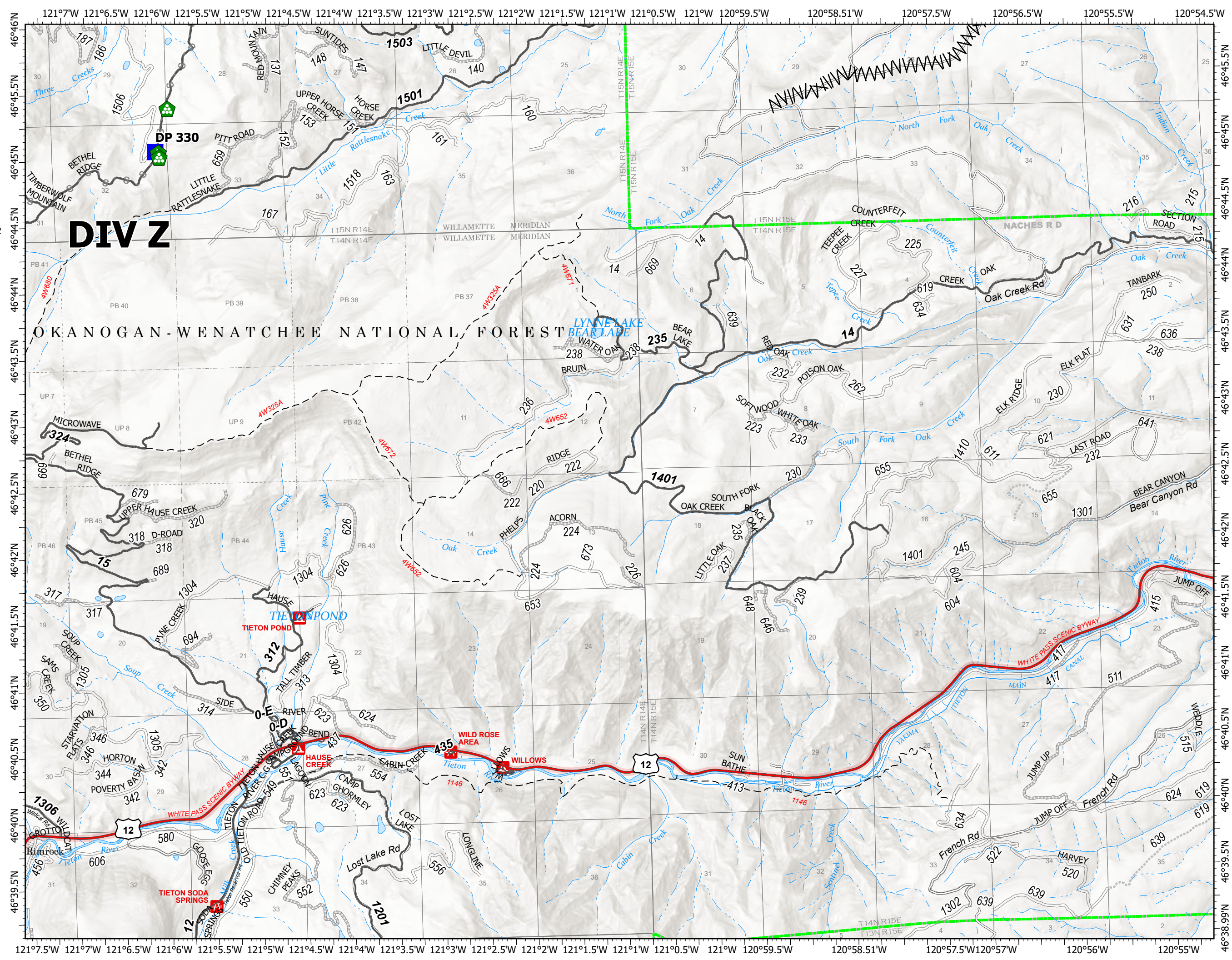
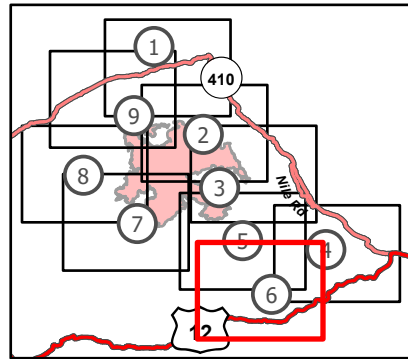
Schneider Springs
WAOWF-000453
8/19/2021

31,868 acres at 8/17/2021 1700

Page 6 of 9



- Drop Point
- Landing or Log Deck
- Dozer Push
- Water Source
- Completed Fuel Break
- Planned Secondary Line
- Administrative FS Boundary

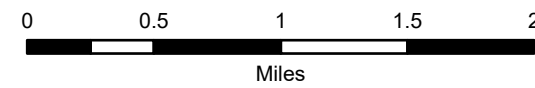


Transportation Map

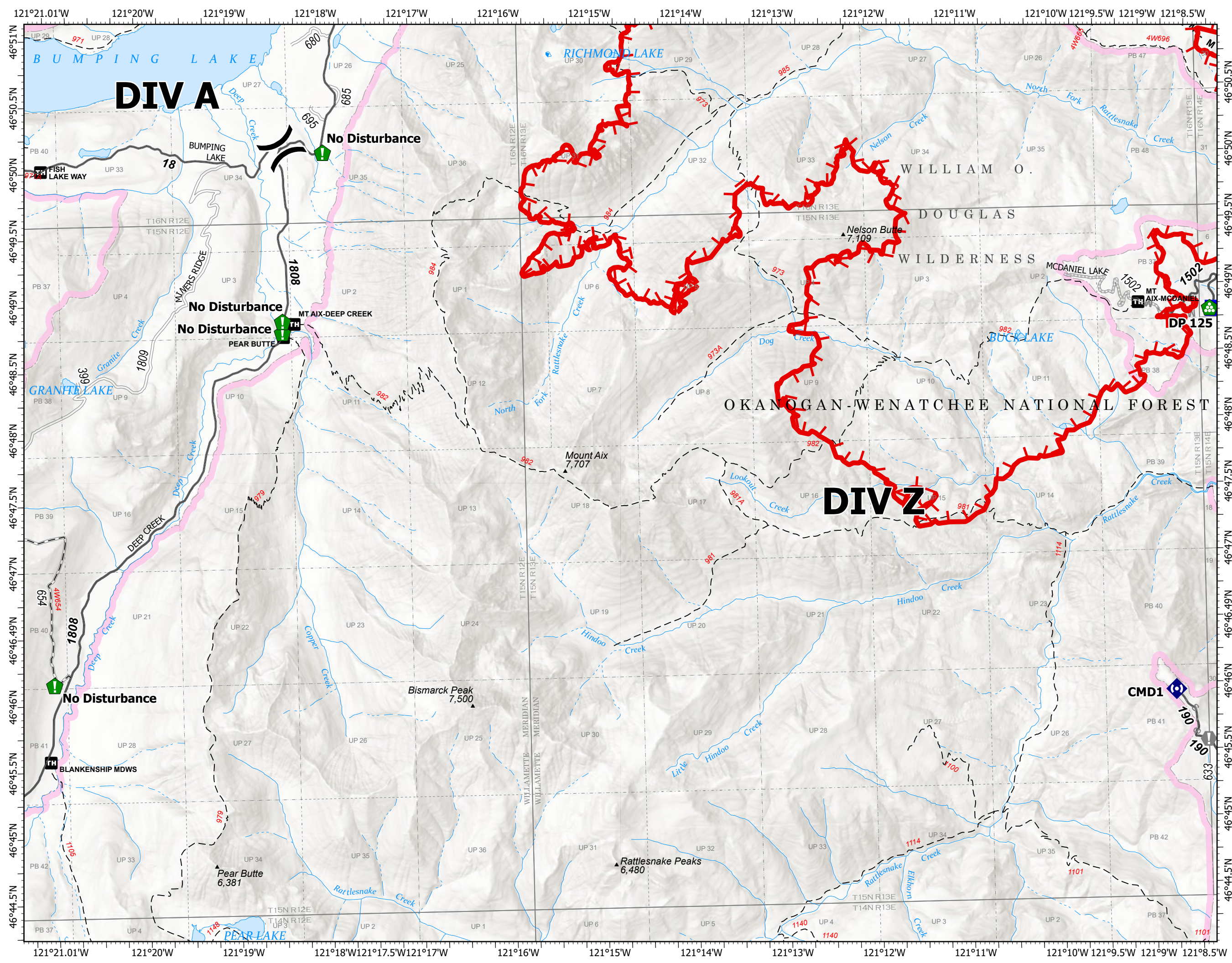
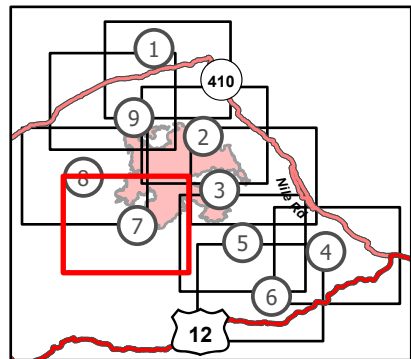
Schneider Springs
WAOWF-000453
8/19/2021

31,868 acres at 8/17/2021 1700

Page 7 of 9



- (X) Division Break
- Drop Point
- ⚠ Value at Risk
- 📍 Resource Location
- 🏠 Landing or Log Deck
- 📶 Repeater
- ⌘ Completed Dozer Line
- M - Completed Mixed Construction Line
- R - Completed Road as Line
- M - Planned Mixed Construction Line
- S - Planned Secondary Line
- 🔴 Fire Edge
- 🟩 Administrative FS Boundary
- 🟪 FS Wilderness Boundary



8/18/2021 1624
Acres from IR
North American 1983 Datum.
Lat/Long Grid



Transportation Map

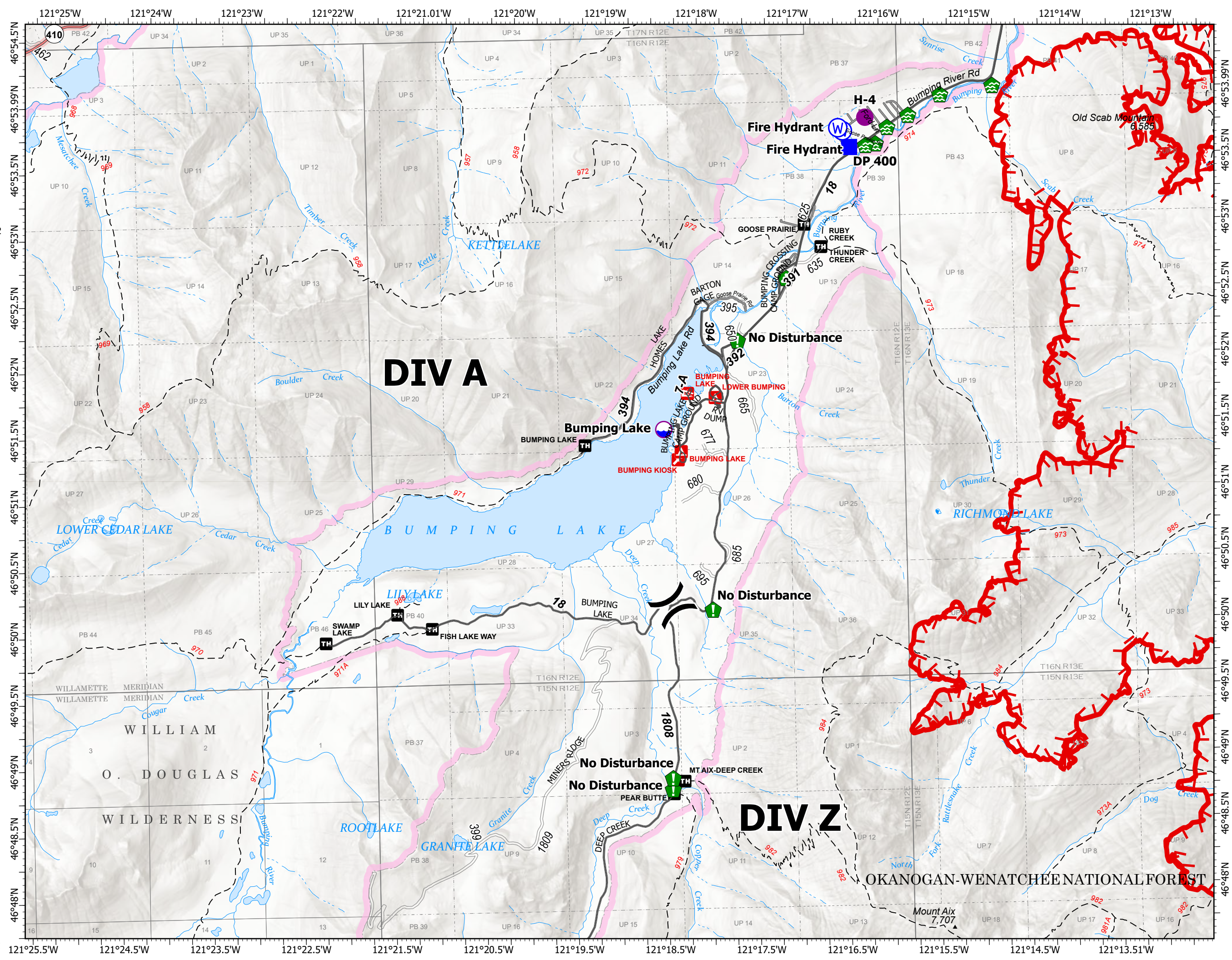
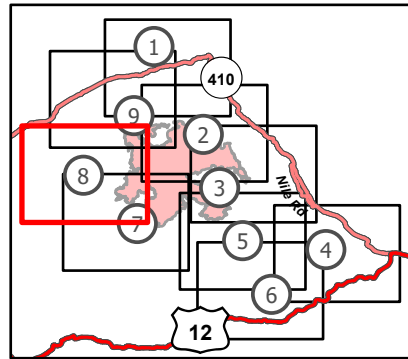
Schneider Springs
 WAOWF-000453
 8/19/2021

31,868 acres at 8/17/2021 1700

Page 8 of 9



- Dip Site
- Helispot
- Division Break
- Drop Point
- Water Development or Draft Site
- Resource Location
- Landing or Log Deck
- Water Source
- Fire Edge
- Administrative FS Boundary
- FS Wilderness Boundary



8/18/2021 1624
 Acres from IR
 North American 1983 Datum.
 LatLong Grid

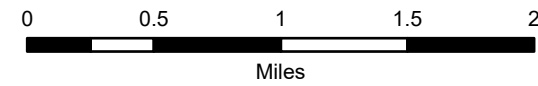


Transportation Map

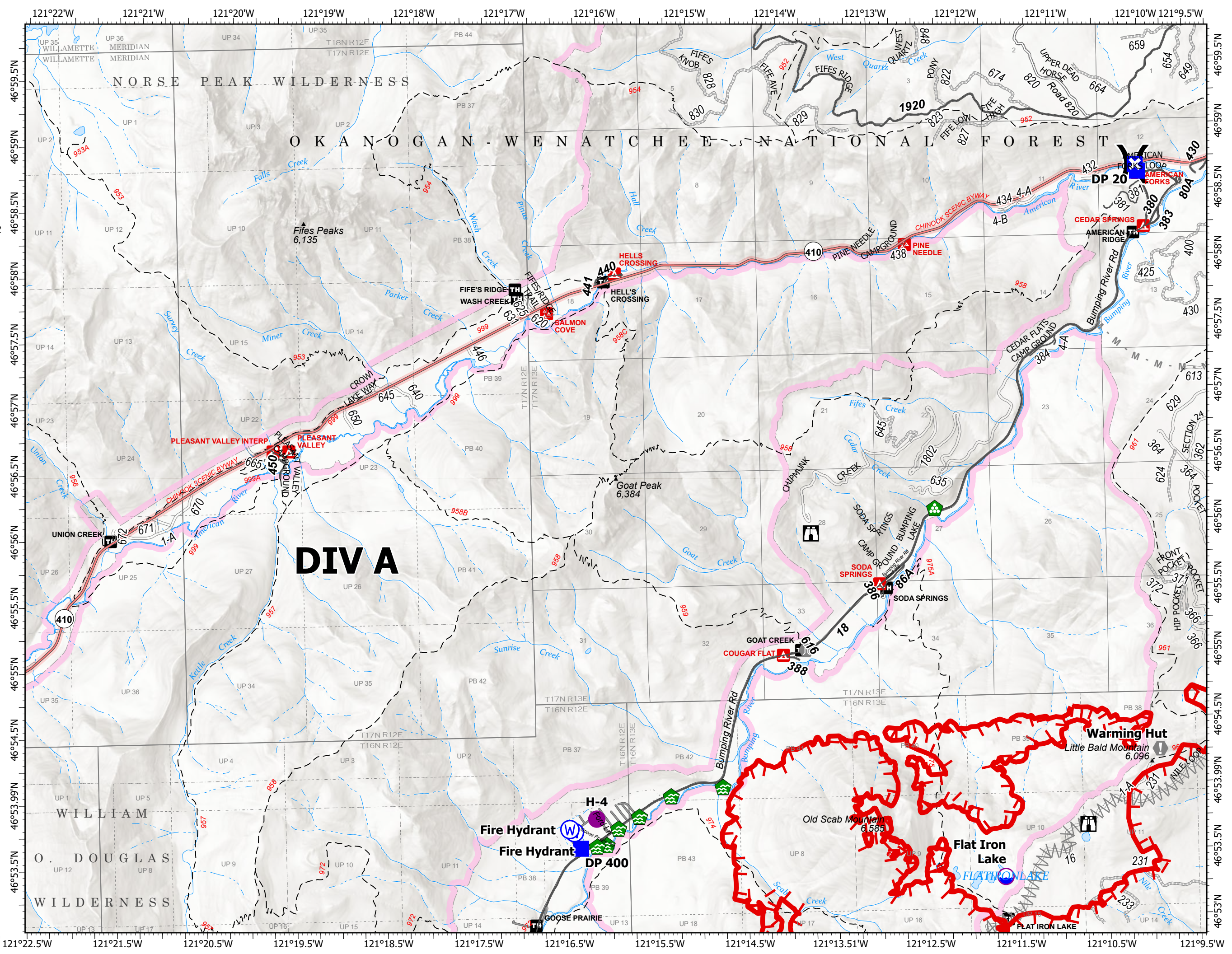
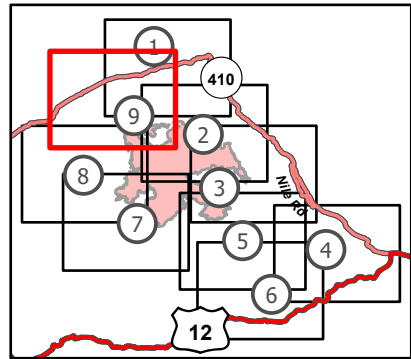
Schneider Springs
WAOWF-000453
8/19/2021

31,868 acres at 8/17/2021 1700

Page 9 of 9



- Dip Site
- Helispot
- Division Break
- Drop Point
- Closure
- Lookout
- Value at Risk
- Bridge
- Water Development or Draft Site
- Landing or Log Deck
- Water Source
- Planned Fuel Break
- Planned Mixed Construction Line
- Fire Edge
- Administrative FS Boundary
- FS Wilderness Boundary



8/18/2021 1624
Acres from IR
North American 1983 Datum.
LatLong Grid

