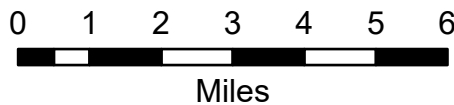


# Transportation Map Index

Schneider Springs  
WAOWF-000453  
8/19/2021

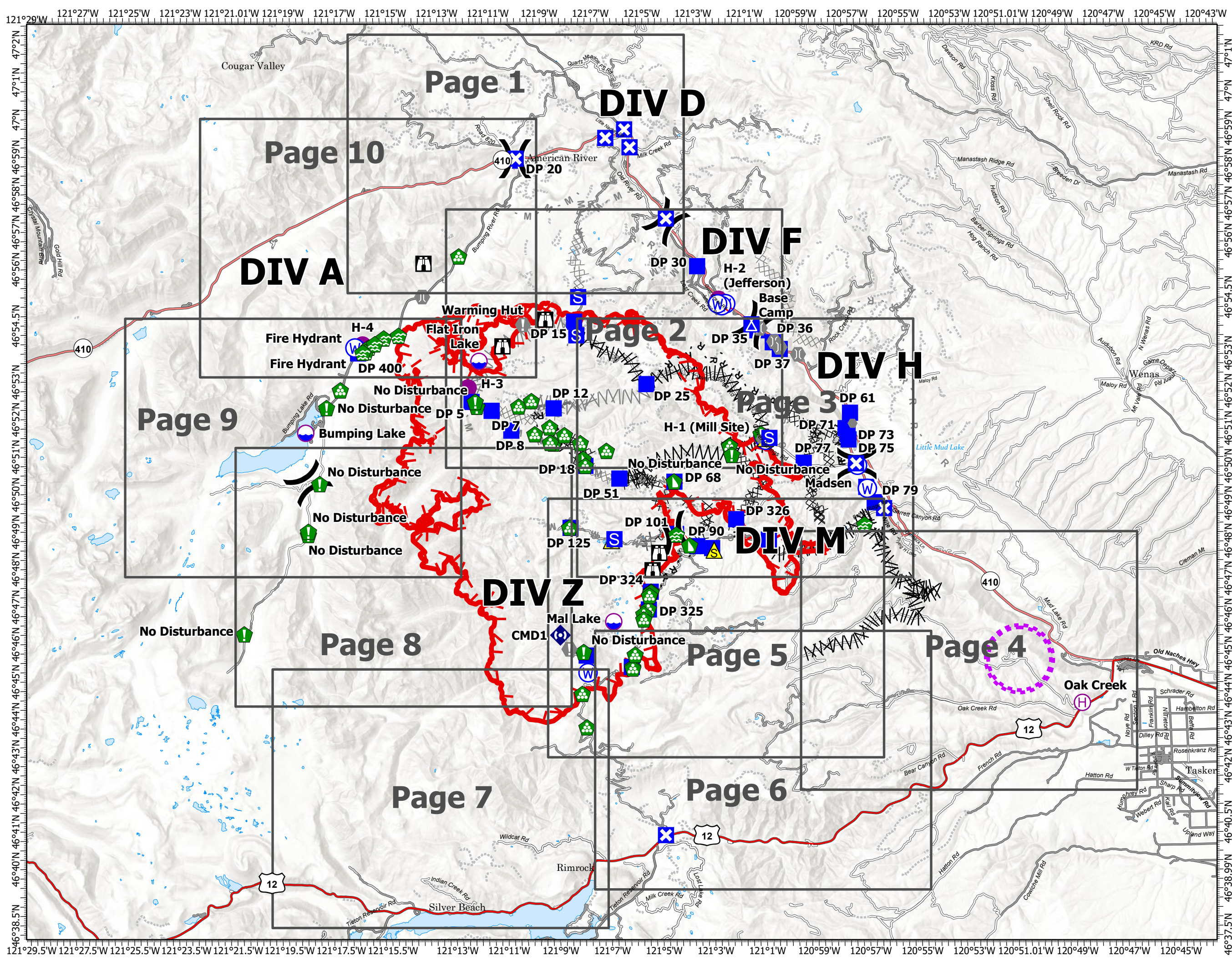
56,422 acres at 8/18/2021 2330



- Dip Site
- Helispot
- Helibase
- Division Break
- Drop Point
- Closure
- Camp
- Staging Area
- Lookout
- Value at Risk
- Other
- Bridge
- Water Development or Draft Site
- Resource Location
- Landing or Log Deck
- Dozer Push
- Repeater
- Safety Zone
- Water Source
- Restricted Water Source
- Completed Dozer Line
- Completed Fuel Break
- Completed Hand Line
- Completed Mixed Construction Line
- Completed Road as Line
- Planned Dozer Line
- Planned Fuel Break
- Planned Mixed Construction Line
- Planned Road as Line
- Planned Secondary Line
- Access or Improved Road
- Other
- UAS Launch and Recovery Zone
- Fire Edge
- Grid Index



DBurbank  
8/19/2021 0507  
Acres from IR  
North American 1983 Datum.  
Lat/Long Grid



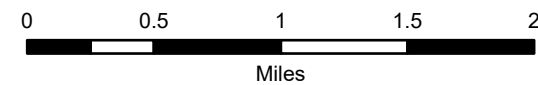


# Transportation Map

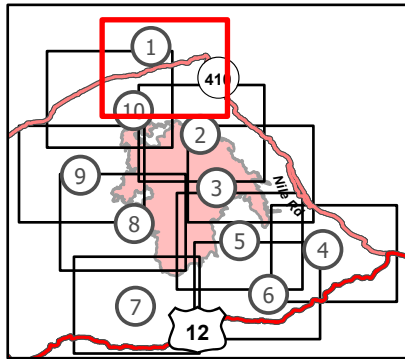
Schneider Springs  
WAOWF-000453  
8/19/2021

56,422 acres at 8/18/2021 2330

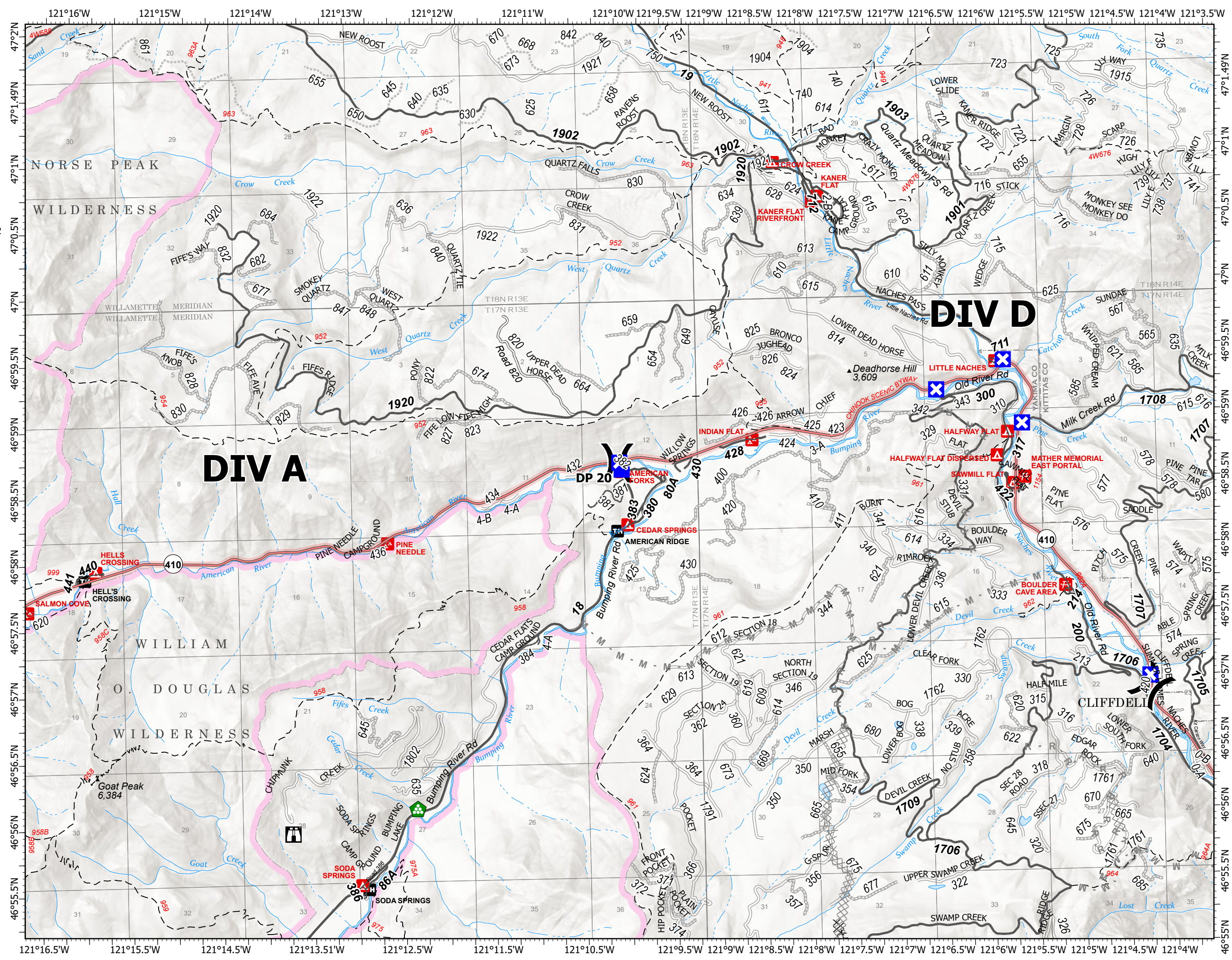
Page 1 of 10



- (X) Division Break
- Drop Point
- ⊠ Closure
- ⊠ Staging Area
- 🏠 Lookout
- 🌲 Bridge
- 🌲 Landing or Log Deck
- ⊠ Completed Dozer Line
- ⊠ Planned Dozer Line
- M - Planned Mixed Construction Line
- R - Planned Road as Line
- 🟩 Administrative FS Boundary
- 🟪 FS Wilderness Boundary



8/19/2021 0542  
Acres from IR  
North American 1983 Datum.  
Lat/Long Grid



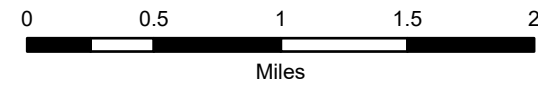


# Transportation Map

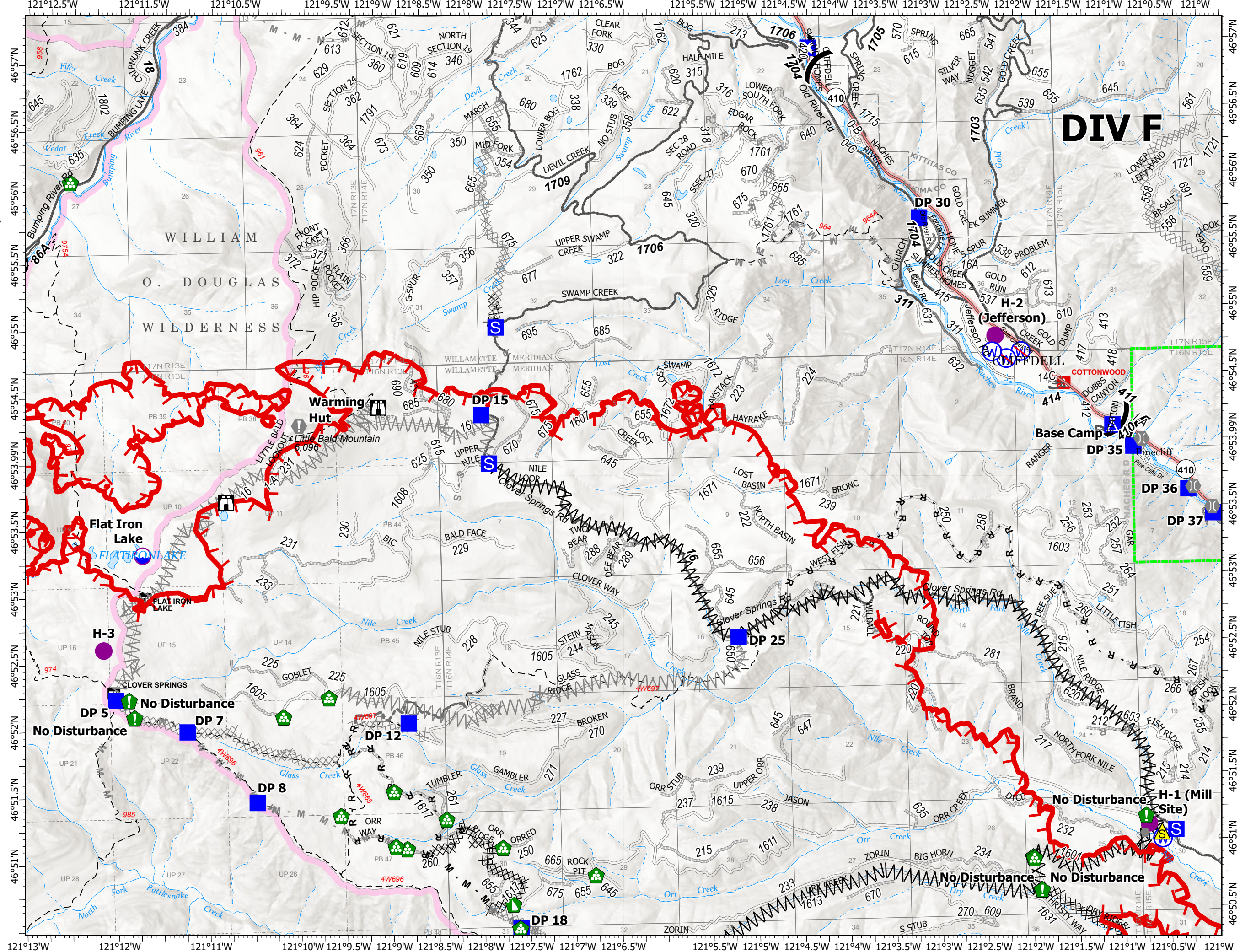
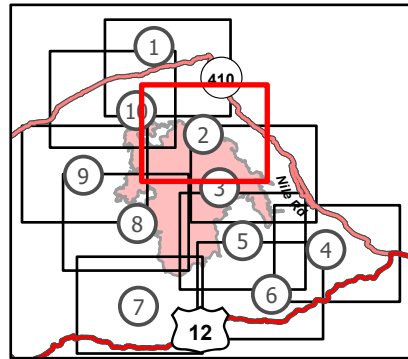
Schneider Springs  
WAOWF-000453  
8/19/2021

56,422 acres at 8/18/2021 2330

Page 2 of 10



- Dip Site
- Helispot
- Division Break
- Drop Point
- Closure
- Camp
- Staging Area
- Lookout
- Value at Risk
- Other
- Bridge
- Resource Location
- Landing or Log Deck
- Dozer Push
- Safety Zone
- Water Source
- Restricted Water Source
- Completed Dozer Line
- Completed Fuel Break
- Completed Mixed Construction Line
- Completed Road as Line
- Planned Dozer Line
- Planned Fuel Break
- Planned Mixed Construction Line
- Planned Road as Line
- Planned Secondary Line
- Other
- Fire Edge
- Administrative FS Boundary
- FS Wilderness Boundary



**DIV F**

**No Disturbance**

**No Disturbance**

**No Disturbance**

**No Disturbance**

**No Disturbance**

**No Disturbance**

**No Disturbance**

**No Disturbance**

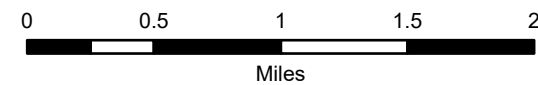


# Transportation Map

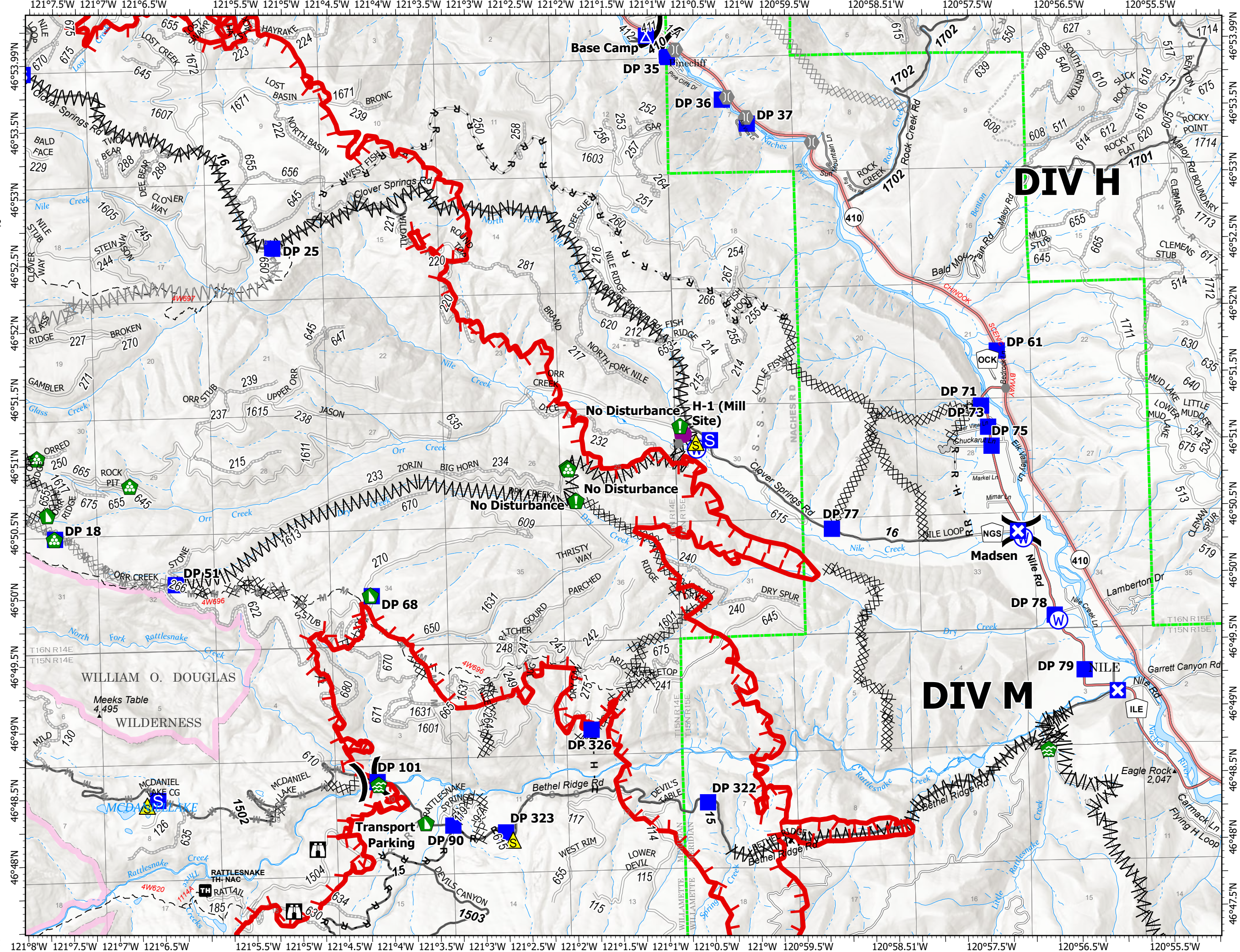
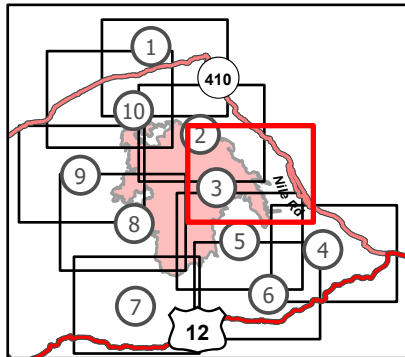
Schneider Springs  
WAOWF-000453  
8/19/2021

56,422 acres at 8/18/2021 2330

Page 3 of 10



- Helispot
- ) Division Break
- Drop Point
- ⊠ Closure
- ▲ Camp
- Staging Area
- ⌂ Lookout
- Other
- ⌂ Bridge
- 🏠 Water Development or Draft Site
- 📍 Resource Location
- 🏠 Landing or Log Deck
- 🚧 Dozer Push
- ⚠ Safety Zone
- Ⓜ Water Source
- ⊗ Completed Dozer Line
- ⊗ Completed Fuel Break
- H Completed Hand Line
- M Completed Mixed Construction Line
- R Completed Road as Line
- ⊗ Planned Dozer Line
- ⊗ Planned Fuel Break
- M Planned Mixed Construction Line
- R Planned Road as Line
- S Planned Secondary Line
- Access or Improved Road
- Fire Edge
- Administrative FS Boundary
- FS Wilderness Boundary





# Transportation Map

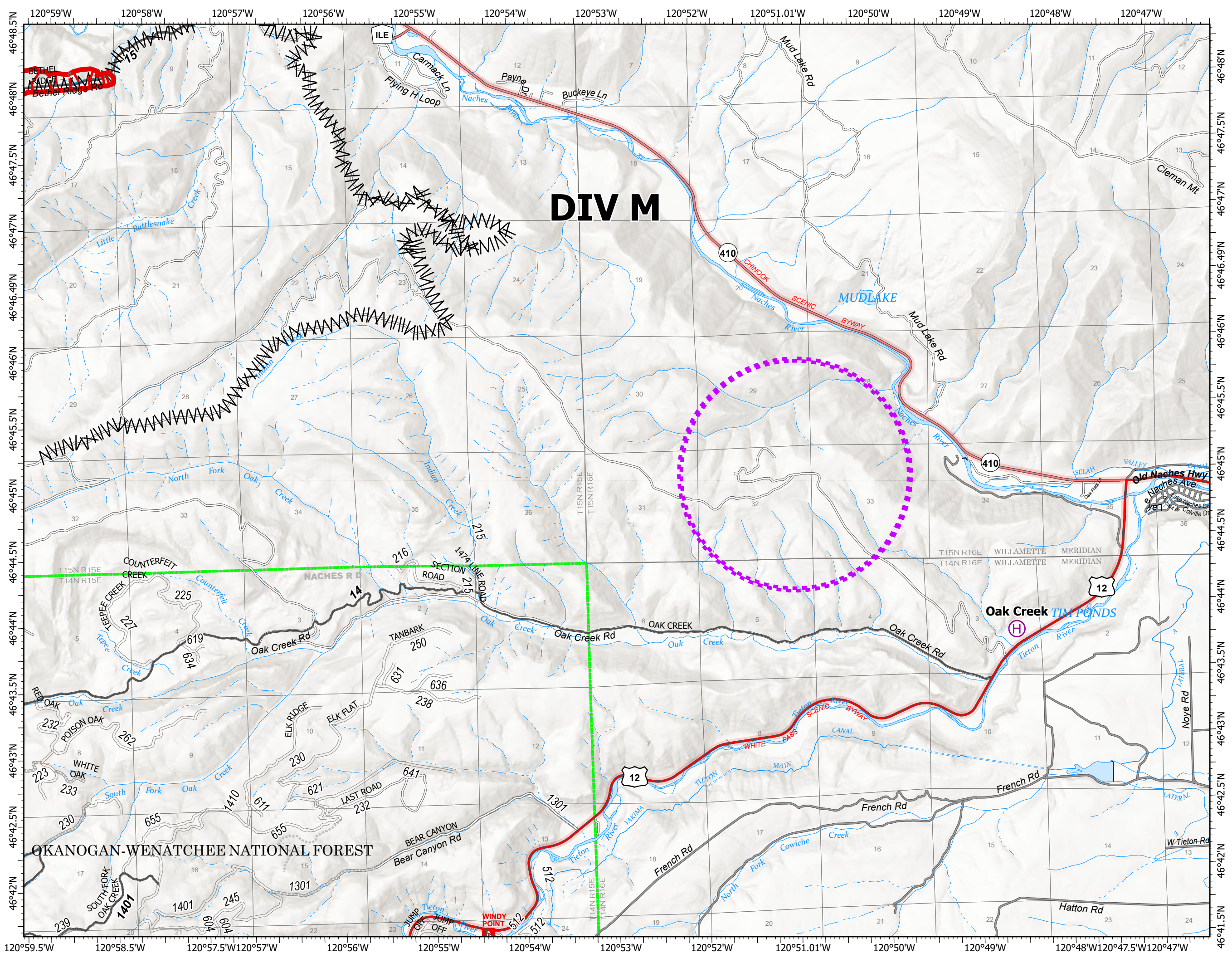
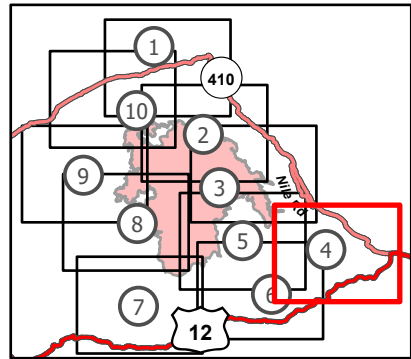
Schneider Springs  
WAOWF-000453  
8/19/2021

56,422 acres at 8/18/2021 2330

Page 4 of 10



- Helibase
- Water Development or Draft Site
- Completed Fuel Break
- UAS Launch and Recovery Zone
- Fire Edge
- Administrative FS Boundary



OKANOGAN-WENATCHEE NATIONAL FOREST

**DIV M**

Oak Creek TIM PONDS

8/19/2021 0542  
Acres from IR  
North American 1983 Datum.  
Lat/Long Grid



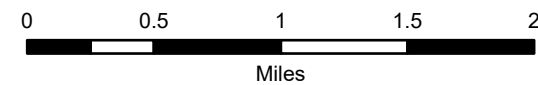


# Transportation Map

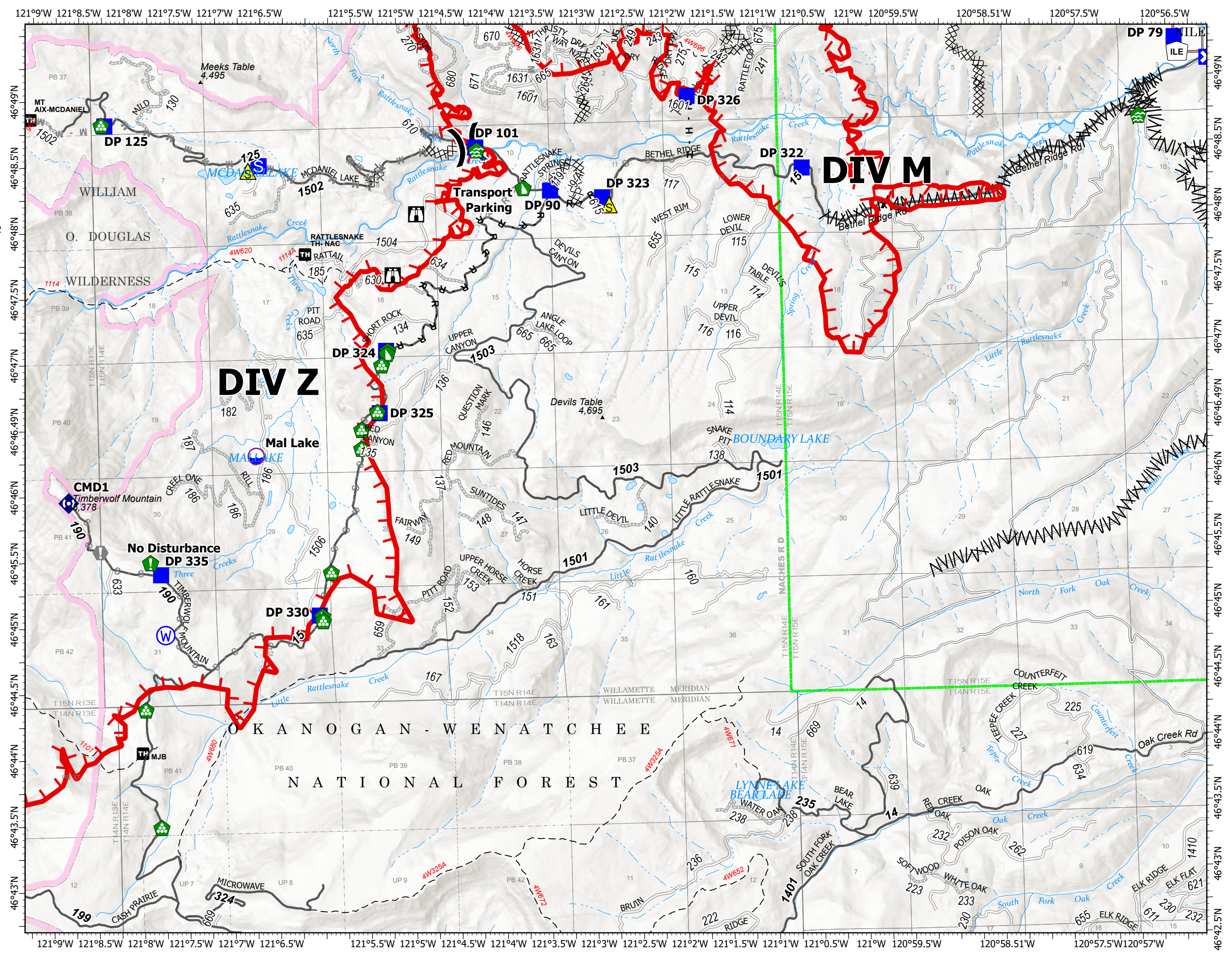
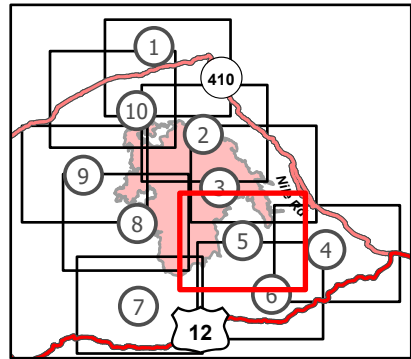
Schneider Springs  
WAOWF-000453  
8/19/2021

56,422 acres at 8/18/2021 2330

Page 5 of 10



- Dip Site
- Division Break
- Drop Point
- Closure
- Staging Area
- Lookout
- Value at Risk
- Water Development or Draft Site
- Resource Location
- Landing or Log Deck
- Dozer Push
- Repeater
- Safety Zone
- Water Source
- Completed Dozer Line
- Completed Fuel Break
- Completed Hand Line
- Completed Road as Line
- Planned Dozer Line
- Planned Mixed Construction Line
- Planned Road as Line
- Planned Secondary Line
- Other
- Fire Edge
- Administrative FS Boundary
- FS Wilderness Boundary



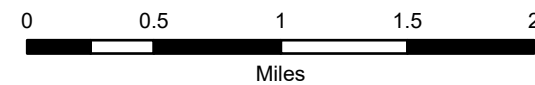


# Transportation Map

Schneider Springs  
 WAOWF-000453  
 8/19/2021

56,422 acres at 8/18/2021 2330

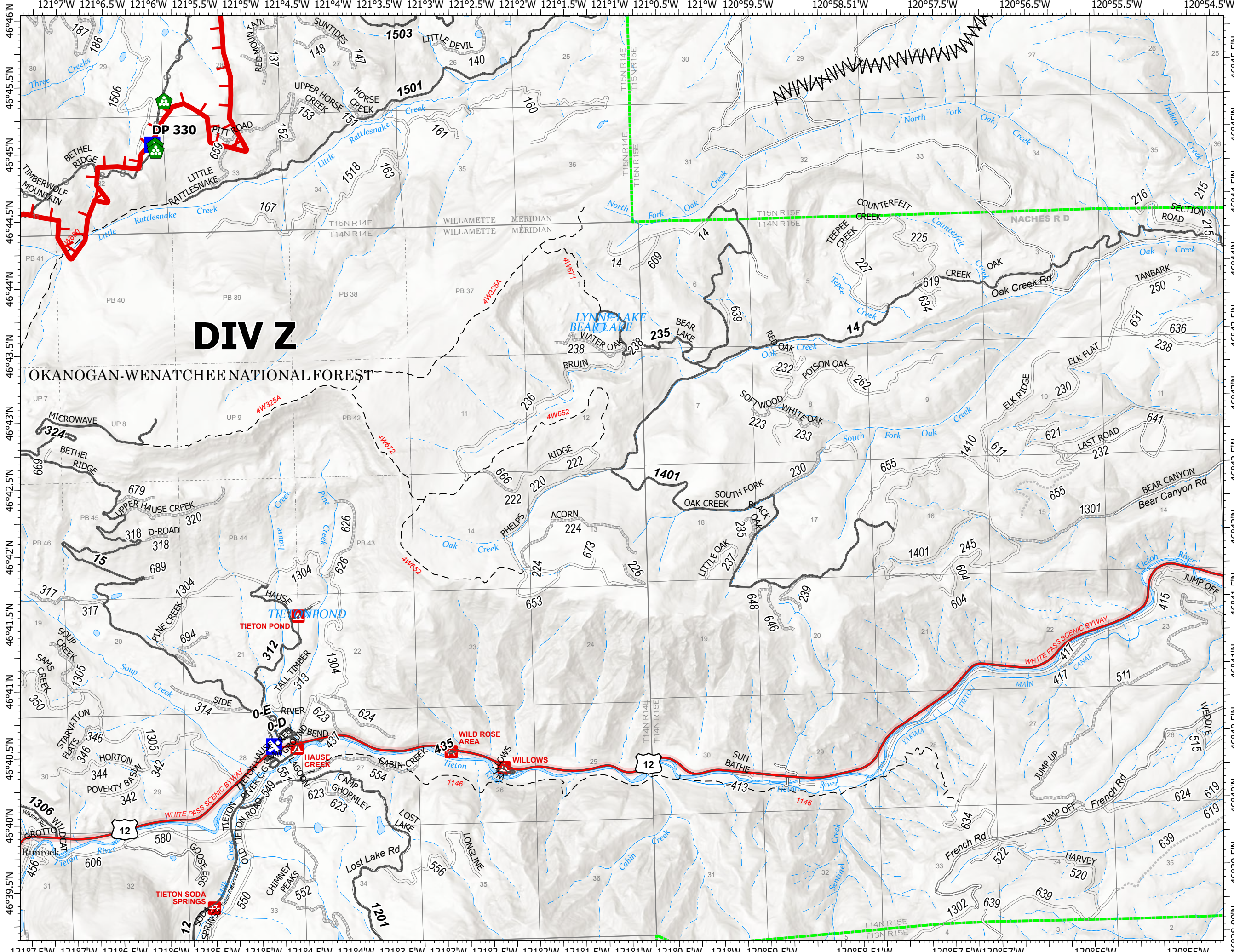
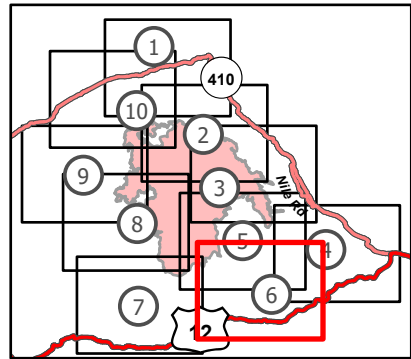
Page 6 of 10



- Drop Point
- ⊠ Closure
- 🏠 Landing or Log Deck
- 🚧 Dozer Push
- Ⓜ Water Source
- ⚡ Completed Fuel Break
- Planned Secondary Line
- ▬ Fire Edge
- ▬ Administrative FS Boundary

## DIV Z

OKANOGAN-WENATCHEE NATIONAL FOREST



8/19/2021 0543  
 Acres from IR  
 North American 1983 Datum.  
 Lat/Long Grid



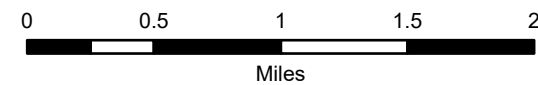


# Transportation Map

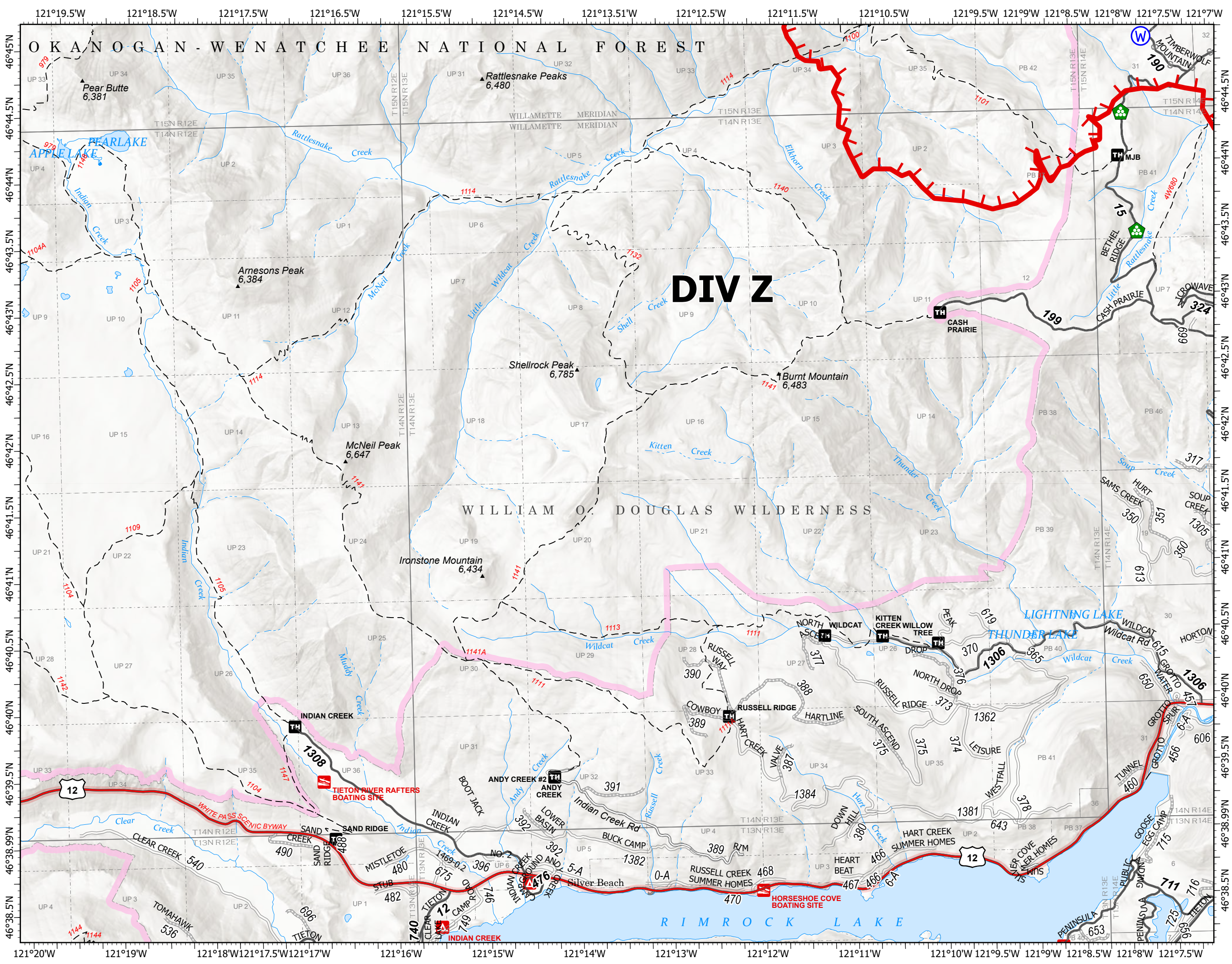
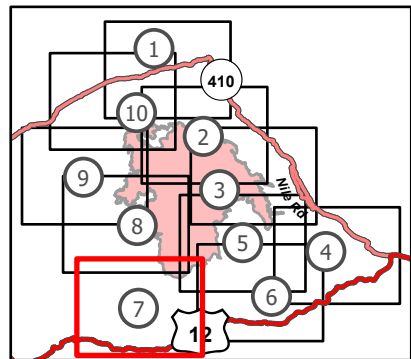
Schneider Springs  
 WAOWF-000453  
 8/19/2021

56,422 acres at 8/18/2021 2330

Page 7 of 10



- Landing or Log Deck
- Water Source
- Planned Secondary Line
- Other
- Fire Edge
- Administrative FS Boundary
- FS Wilderness Boundary



8/19/2021 0543  
 Acres from IR  
 North American 1983 Datum.  
 Lat/Long Grid



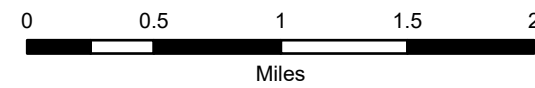


# Transportation Map

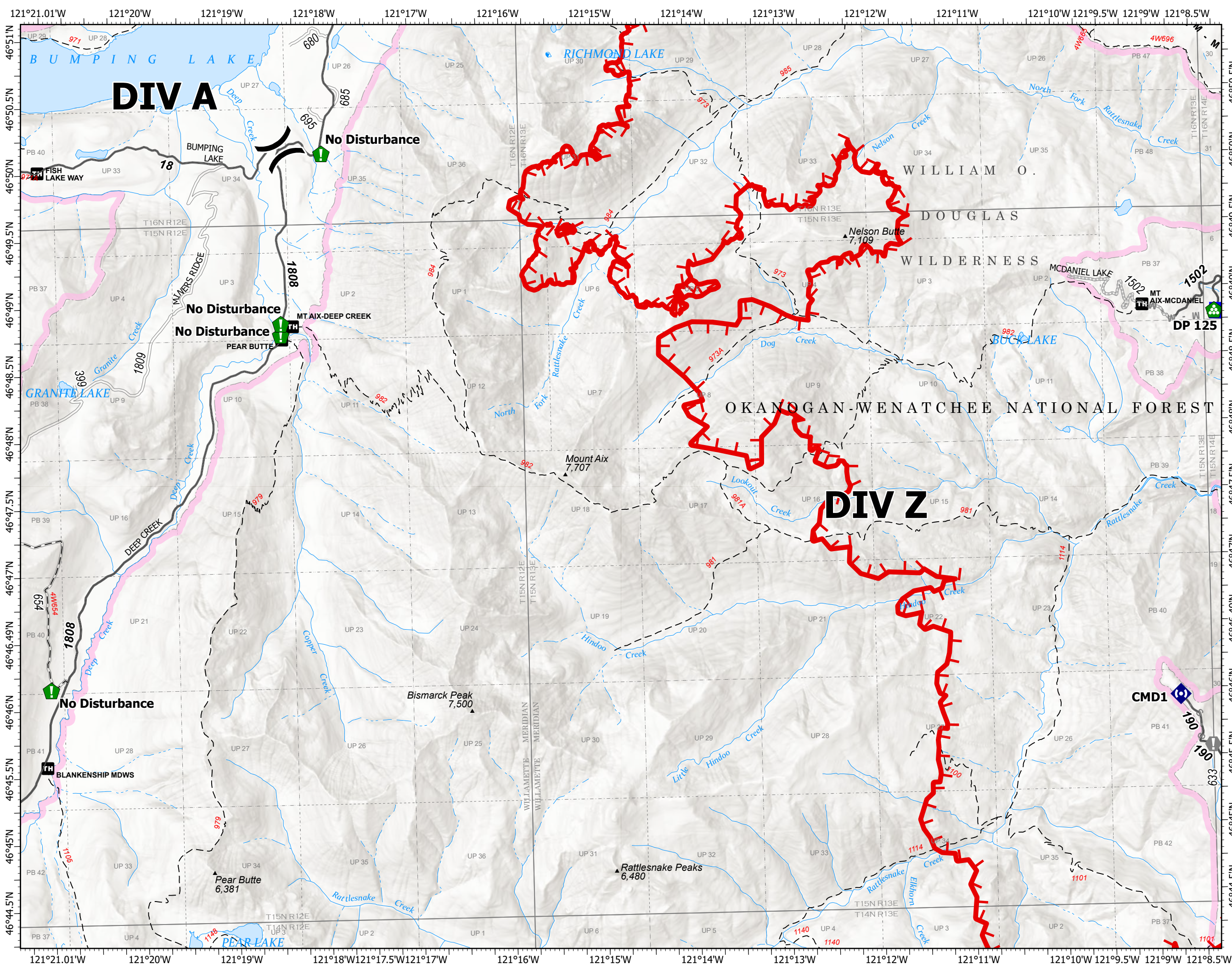
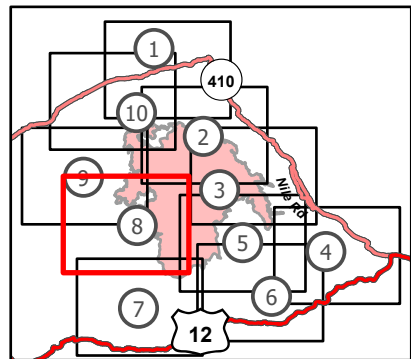
Schneider Springs  
WAOWF-000453  
8/19/2021

56,422 acres at 8/18/2021 2330

Page 8 of 10



- (X) Division Break
- Drop Point
- ⊕ Value at Risk
- 📍 Resource Location
- 🏠 Landing or Log Deck
- 📶 Repeater
- ⌘ Completed Dozer Line
- M - Completed Mixed Construction Line
- R - Completed Road as Line
- M - Planned Mixed Construction Line
- S - Planned Secondary Line
- 🔴 Fire Edge
- 🟩 Administrative FS Boundary
- 🟪 FS Wilderness Boundary





# Transportation Map

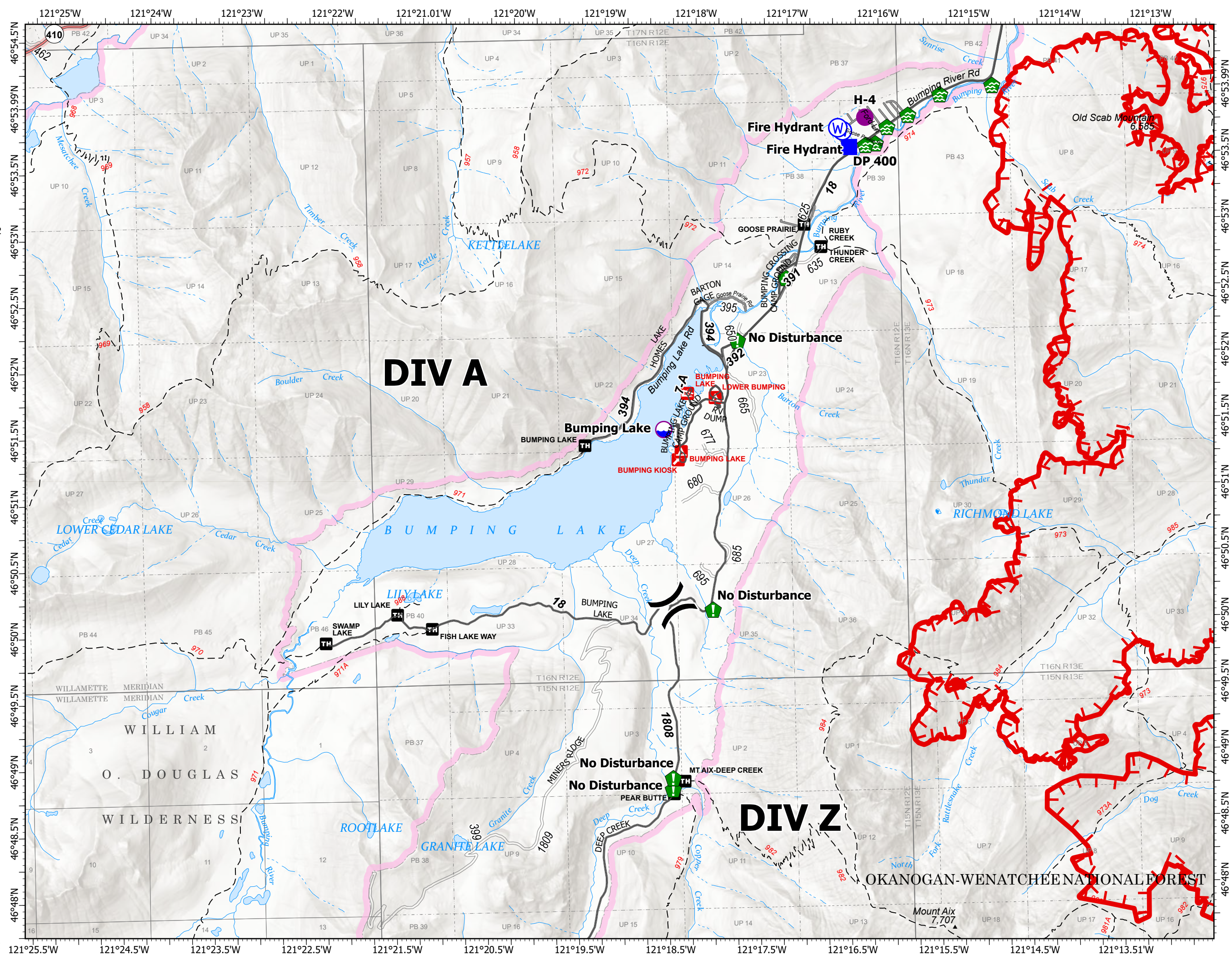
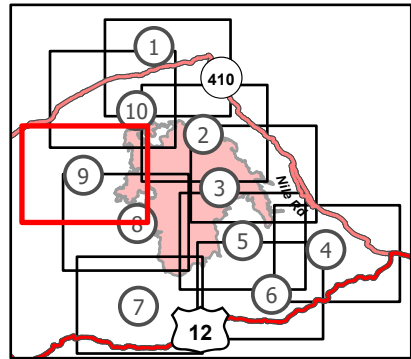
Schneider Springs  
 WAOWF-000453  
 8/19/2021

56,422 acres at 8/18/2021 2330

Page 9 of 10



- Dip Site
- Helispot
- Division Break
- Drop Point
- Water Development or Draft Site
- Resource Location
- Landing or Log Deck
- Water Source
- Fire Edge
- Administrative FS Boundary
- FS Wilderness Boundary



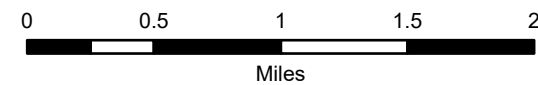


# Transportation Map

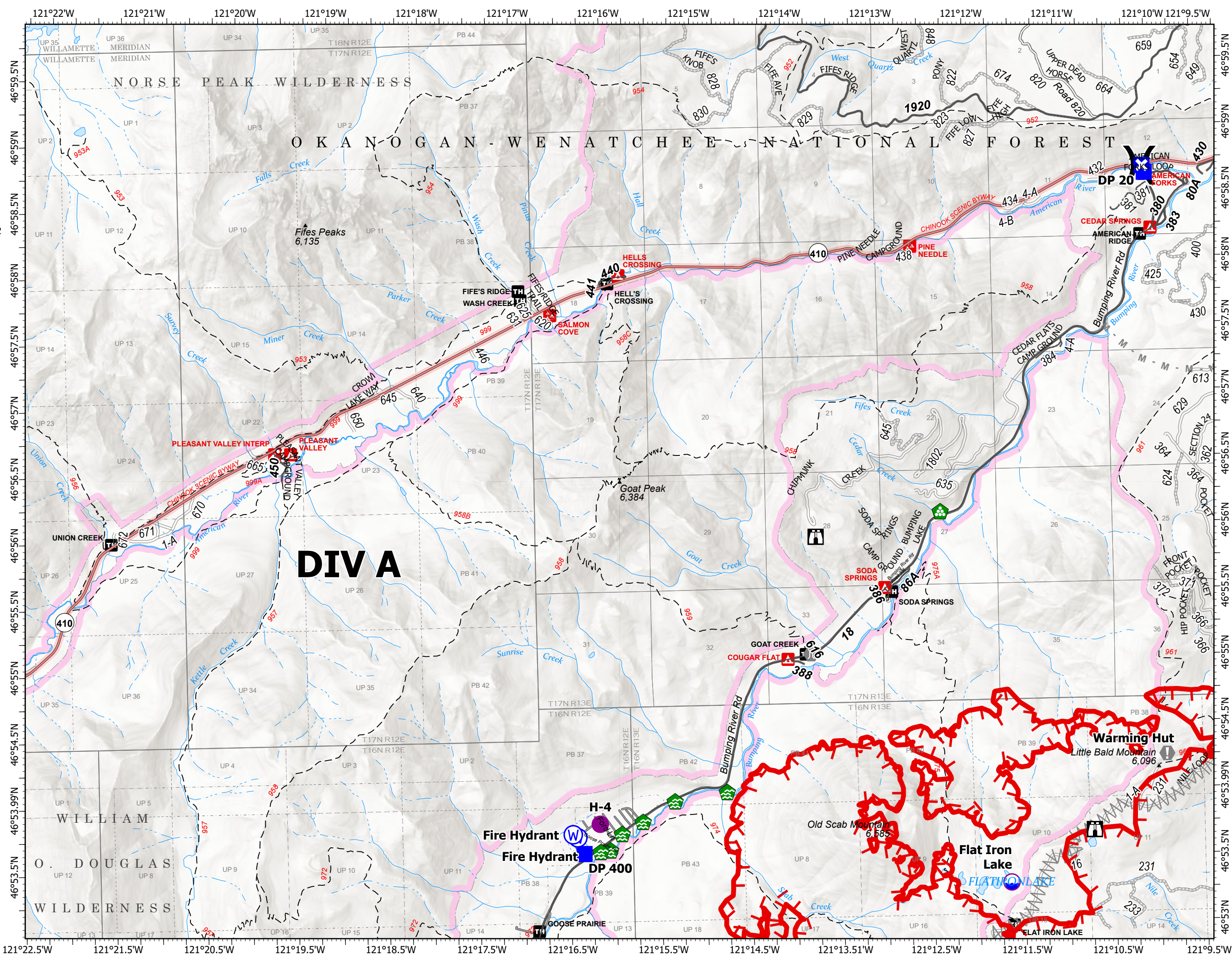
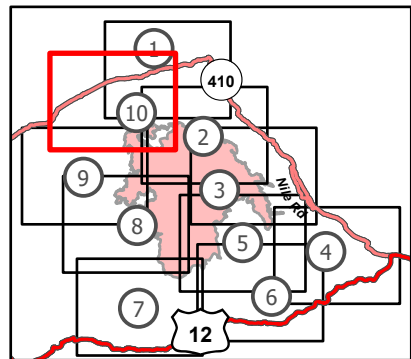
Schneider Springs  
WAOWF-000453  
8/19/2021

56,422 acres at 8/18/2021 2330

Page 10 of 10



- Dip Site
- Helispot
- Division Break
- Drop Point
- Closure
- Lookout
- Value at Risk
- Bridge
- Water Development or Draft Site
- Landing or Log Deck
- Water Source
- Planned Fuel Break
- Planned Mixed Construction Line
- Fire Edge
- Administrative FS Boundary
- FS Wilderness Boundary



8/19/2021 0543  
Acres from IR  
North American 1983 Datum.  
LatLong Grid

