

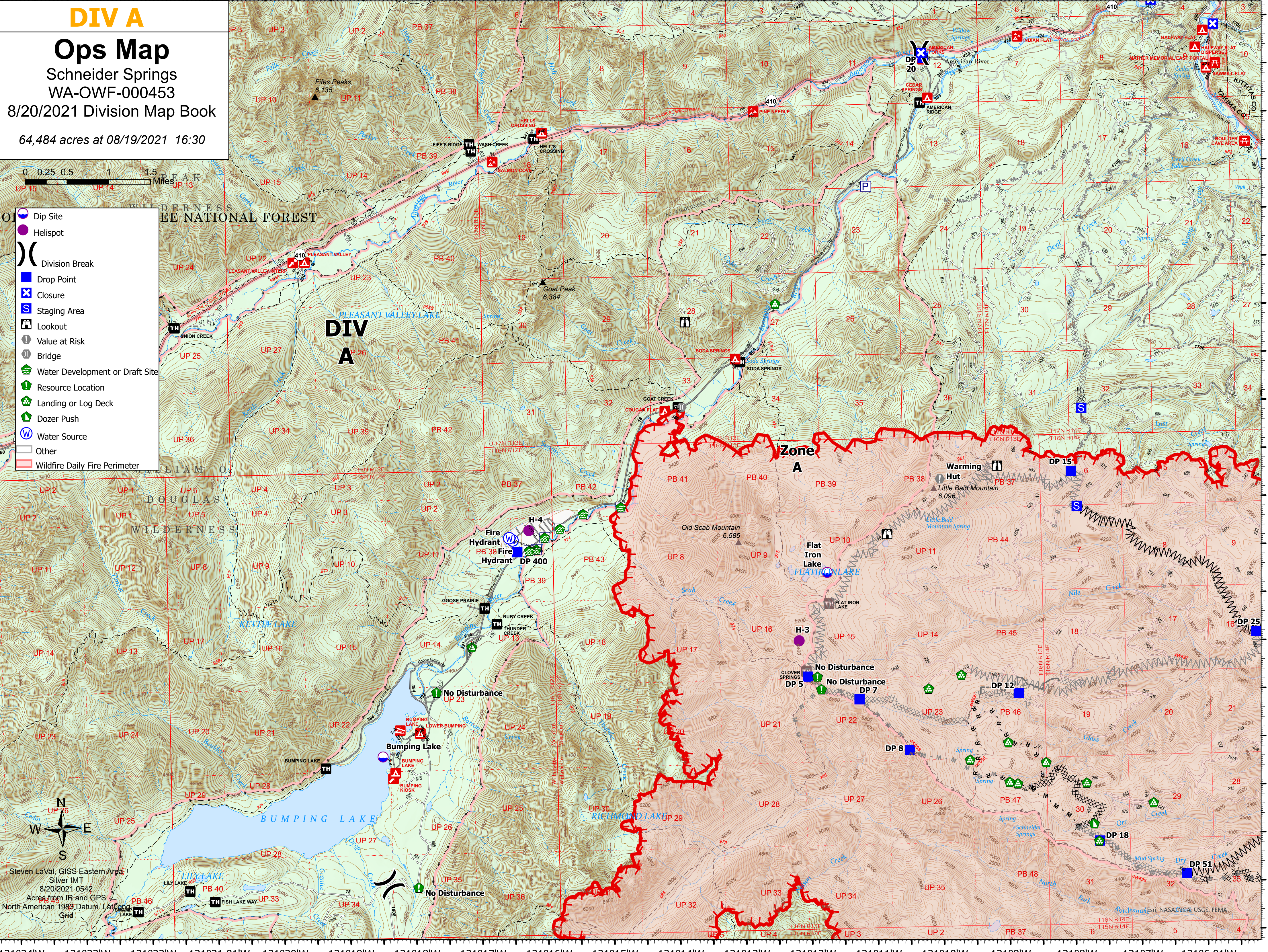
DIV A

Ops Map

Schneider Springs
WA-OWF-000453
8/20/2021 Division Map Book
64,484 acres at 08/19/2021 16:30



- Dip Site
- Helispot
- Division Break
- Drop Point
- Closure
- Staging Area
- Lookout
- Value at Risk
- Bridge
- Water Development or Draft Site
- Resource Location
- Landing or Log Deck
- Dozer Push
- Water Source
- Other
- Wildfire Daily Fire Perimeter



Steven LaVal, GISS Eastern Area
Silver IMT
8/20/2021 0542
Acres from IR and GPS
North American 1983 Datum, Lat and
Grid

121°24'W 121°23'W 121°22'W 121°21.01'W 121°20'W 121°19'W 121°18'W 121°17'W 121°16'W 121°15'W 121°14'W 121°13'W 121°12'W 121°11'W 121°10'W 121°9'W 121°8'W 121°7'W 121°6.01'W

46°50'N 46°50.5'N 46°51'N 46°51.5'N 46°52'N 46°52.5'N 46°53'N 46°53.5'N 46°54'N 46°54.5'N 46°55'N 46°55.5'N 46°56'N 46°56.5'N 46°57'N 46°57.5'N 46°58'N 46°58.5'N 46°59'N

46°49.5'N 46°50'N 46°50.5'N 46°51'N 46°51.5'N 46°52'N 46°52.5'N 46°53'N 46°53.5'N 46°54'N 46°54.5'N 46°55'N 46°55.5'N 46°56'N 46°56.5'N 46°57'N 46°57.5'N 46°58'N 46°58.5'N 46°59'N