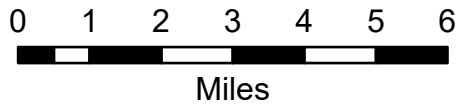


Transportation Map Index

Schneider Springs
WAOWF-000453
8/20/2021

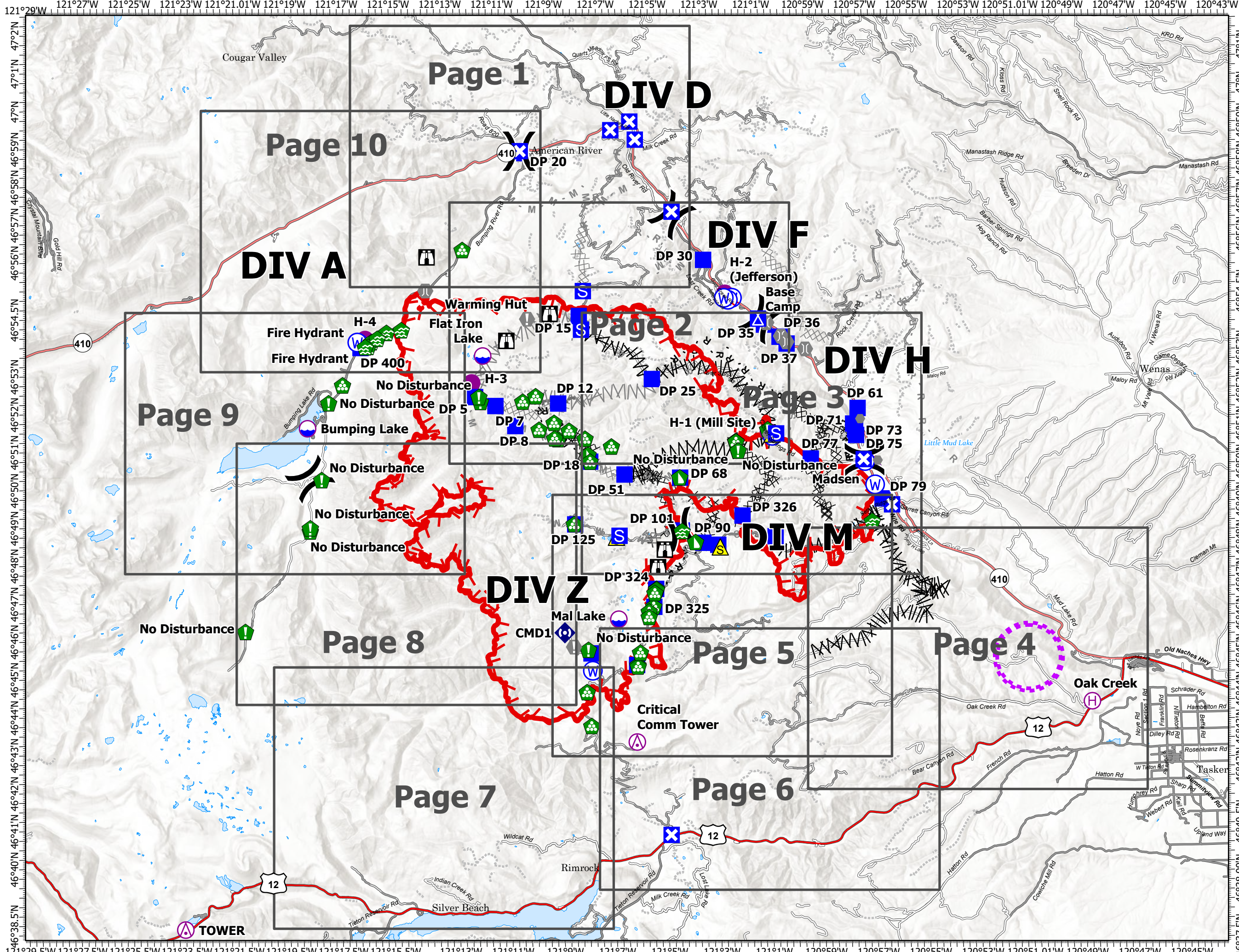
64,484 acres at 8/19/2021 1630



- Aerial Hazard
- Dip Site
- Helispot
- Helibase
- Division Break
- Drop Point
- Closure
- Camp
- Staging Area
- Lookout
- Value at Risk
- Other
- Bridge
- Water Development or Draft Site
- Resource Location
- Landing or Log Deck
- Dozer Push
- Repeater
- Safety Zone
- Water Source
- Restricted Water Source
- Completed Dozer Line
- Completed Fuel Break
- Completed Hand Line
- Completed Mixed Construction Line
- Completed Road as Line
- Planned Dozer Line
- Planned Fuel Break
- Planned Mixed Construction Line
- Planned Road as Line
- Planned Secondary Line
- Access or Improved Road
- Other
- Aerial Hazard
- UAS Launch and Recovery Zone
- Fire Edge
- Grid Index



DBurbank
8/20/2021 0504
Acres from IR
North American 1983 Datum.
Lat/Long Grid



Transportation Map

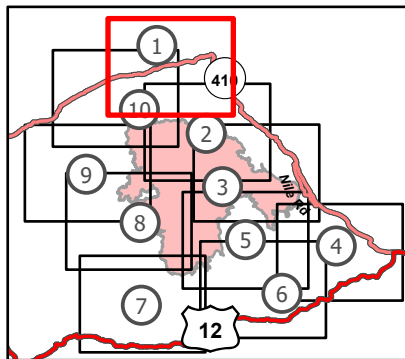
Schneider Springs
WAOWF-000453
8/20/2021

64,484 acres at 8/19/2021 1630

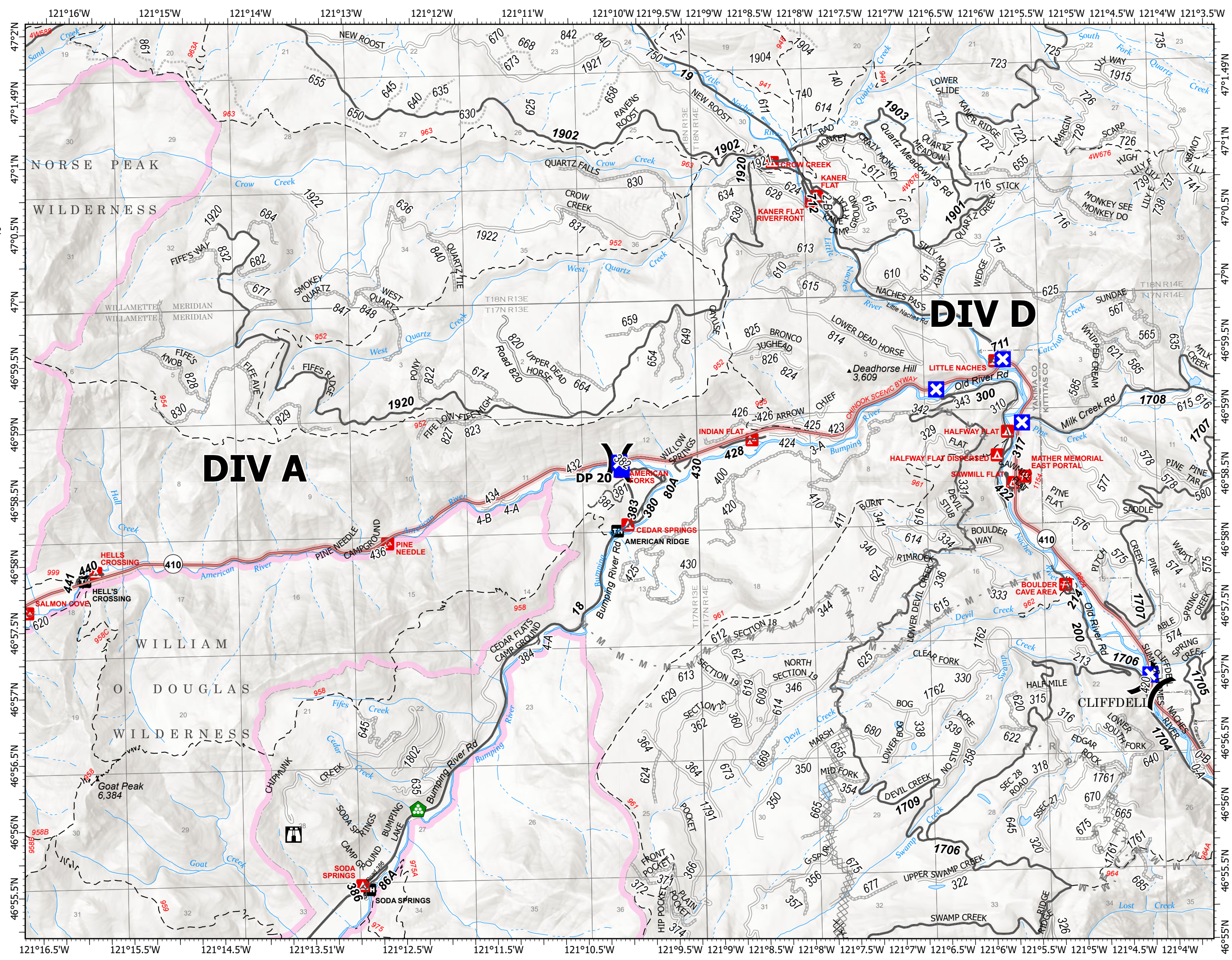
Page 1 of 10



- (X) Division Break
- Drop Point
- ⊠ Closure
- ⊠ Staging Area
- 🏠 Lookout
- 🌲 Bridge
- 🌲 Landing or Log Deck
- ⊠ Completed Dozer Line
- ⊠ Planned Dozer Line
- M - Planned Mixed Construction Line
- R - Planned Road as Line
- 🟩 Administrative FS Boundary
- 🟪 FS Wilderness Boundary



8/20/2021 0511
Acres from IR
North American 1983 Datum.
Lat/Long Grid

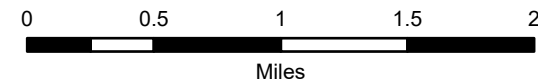


Transportation Map

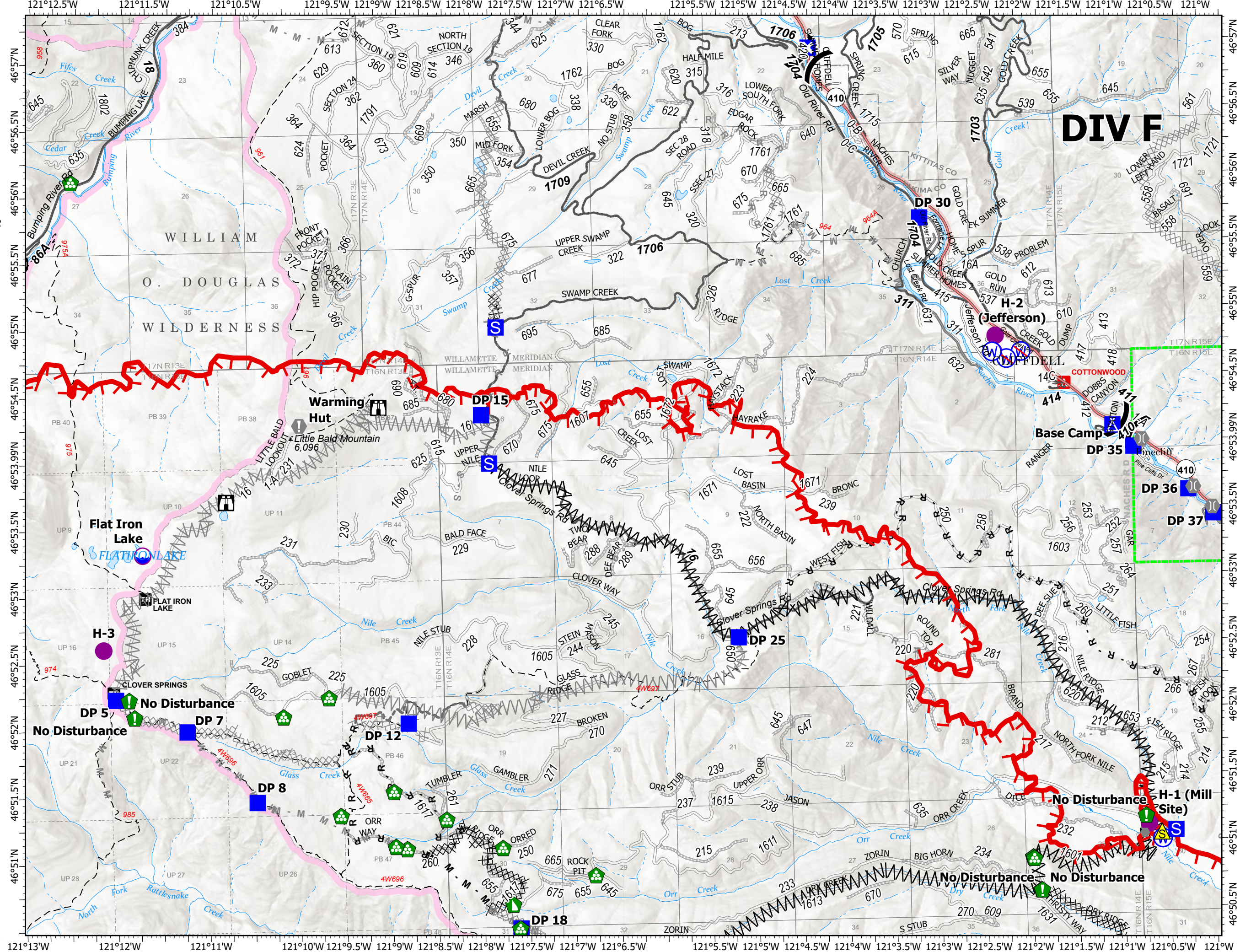
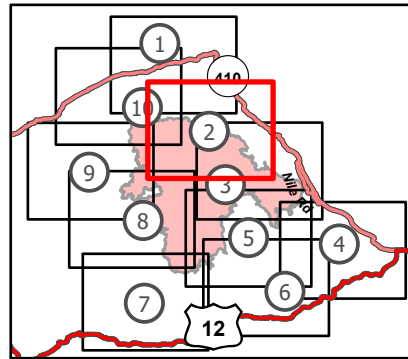
Schneider Springs
 WAOWF-000453
 8/20/2021

64,484 acres at 8/19/2021 1630

Page 2 of 10



- Dip Site
- Helispot
- Division Break
- Drop Point
- Closure
- Camp
- Staging Area
- Lookout
- Value at Risk
- Other
- Bridge
- Resource Location
- Landing or Log Deck
- Dozer Push
- Safety Zone
- Water Source
- Restricted Water Source
- Completed Dozer Line
- Completed Fuel Break
- Completed Mixed Construction Line
- Completed Road as Line
- Planned Dozer Line
- Planned Fuel Break
- Planned Mixed Construction Line
- Planned Road as Line
- Planned Secondary Line
- Other
- Fire Edge
- Administrative FS Boundary
- FS Wilderness Boundary



DIV F

No Disturbance

No Disturbance H-1 (Mill Site)

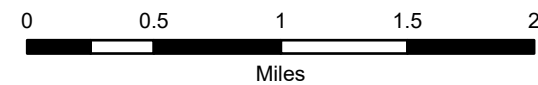
No Disturbance

Transportation Map

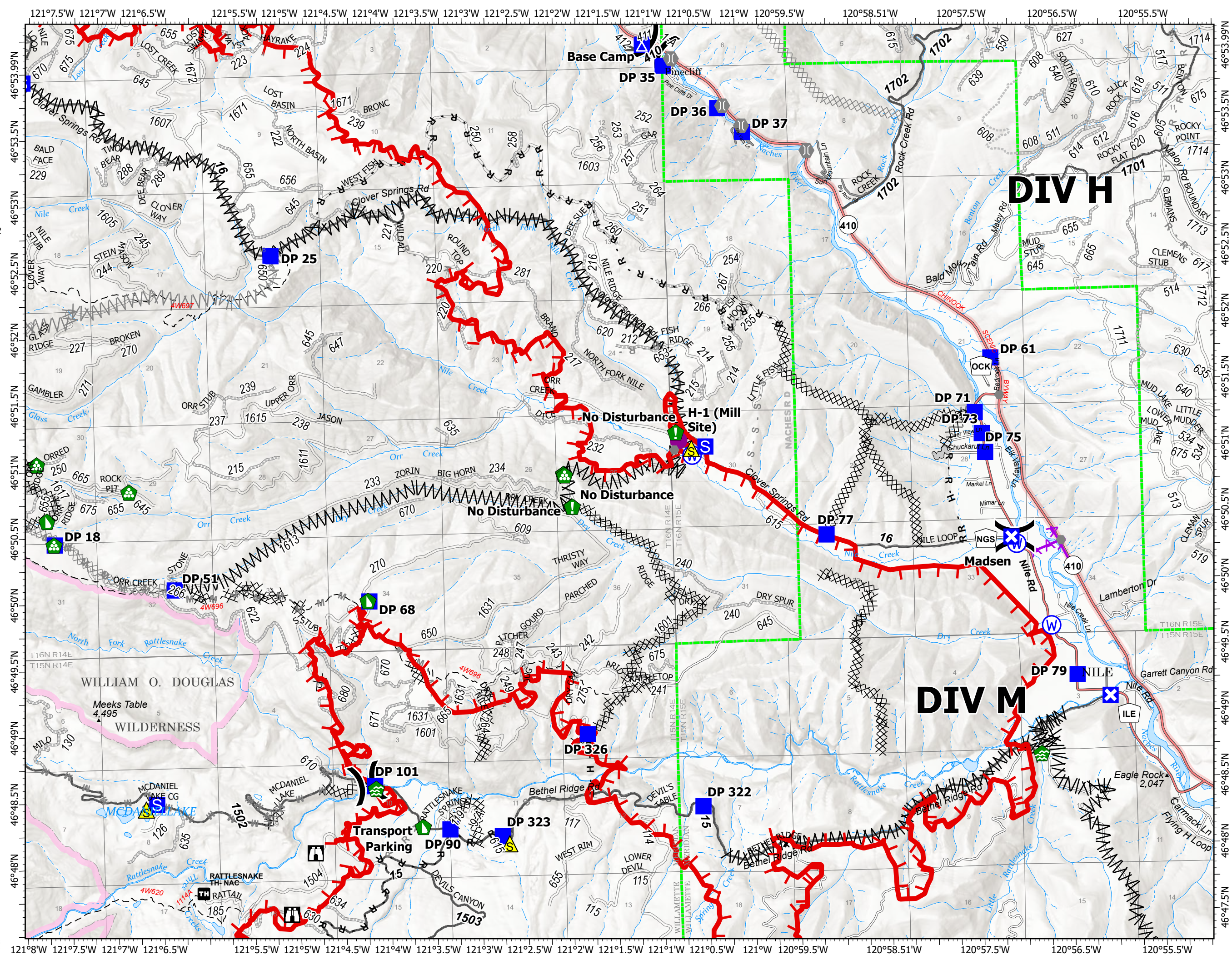
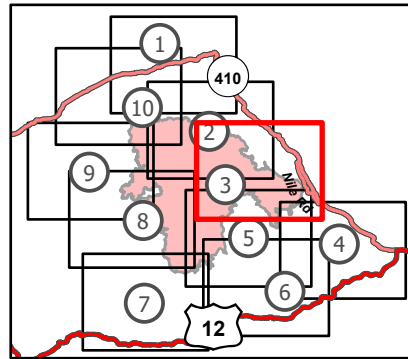
Schneider Springs
WAOWF-000453
8/20/2021

64,484 acres at 8/19/2021 1630

Page 3 of 10



- Helispot
- () Division Break
- Drop Point
- ⊠ Closure
- ⊠ Camp
- ⊠ Staging Area
- ⊠ Lookout
- Other
- Bridge
- 🌿 Water Development or Draft Site
- 🌿 Resource Location
- 🌿 Landing or Log Deck
- 🌿 Dozer Push
- ⚠ Safety Zone
- ⊠ Water Source
- ⊠ Completed Dozer Line
- ⊠ Completed Fuel Break
- H Completed Hand Line
- M Completed Mixed Construction Line
- R Completed Road as Line
- ⊠ Planned Dozer Line
- ⊠ Planned Fuel Break
- M Planned Mixed Construction Line
- R Planned Road as Line
- S Planned Secondary Line
- Access or Improved Road
- ⚠ Aerial Hazard
- 🔴 Fire Edge
- 🟢 Administrative FS Boundary
- ⊠ FS Wilderness Boundary



DIV H

DIV M

Base Camp

No Disturbance H-1 (Mill Site)

No Disturbance

Madsen

Transport Parking

Transportation Map

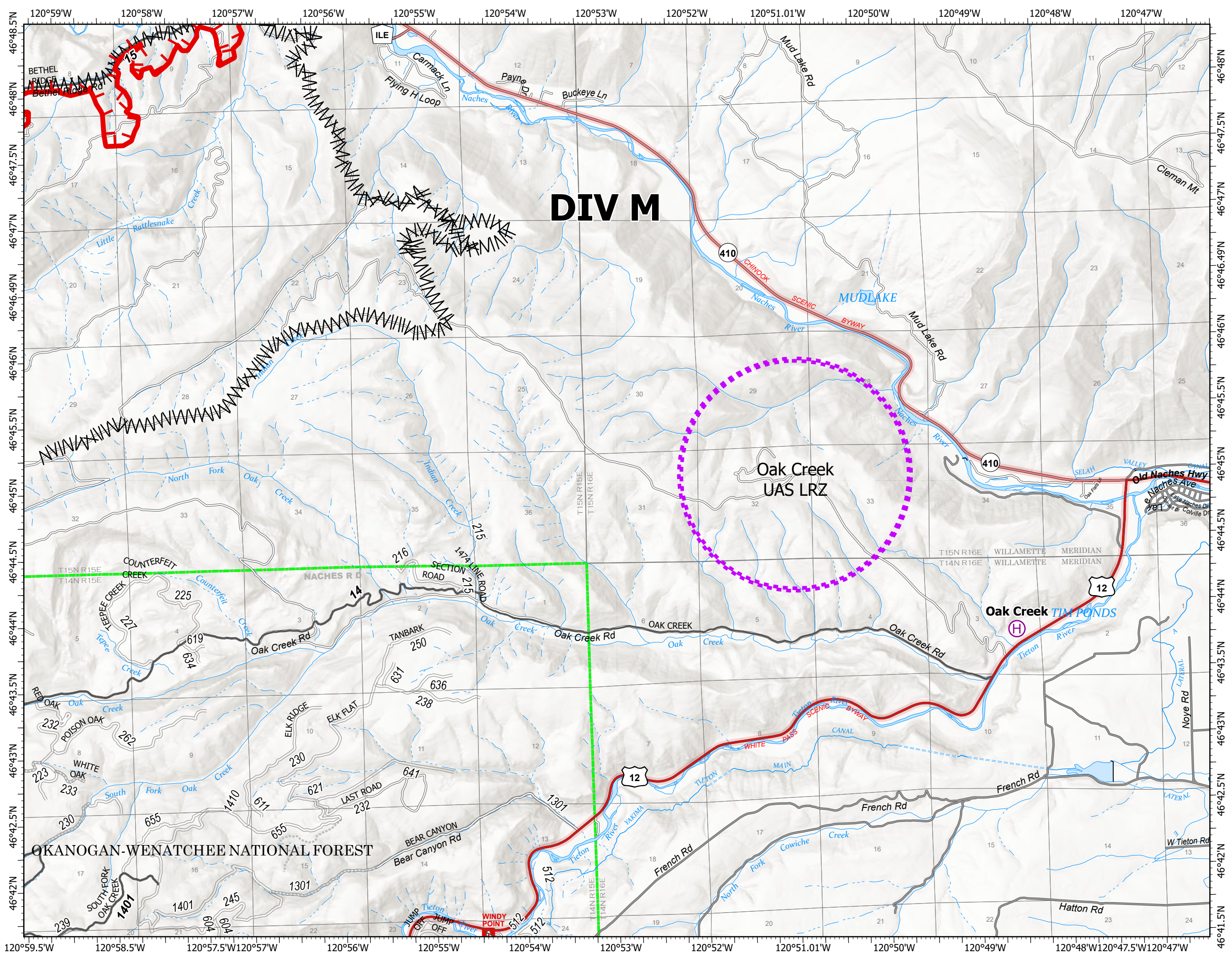
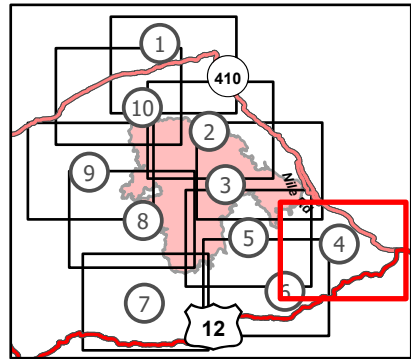
Schneider Springs
WAOWF-000453
8/20/2021

64,484 acres at 8/19/2021 1630

Page 4 of 10



- Helibase
- Water Development or Draft Site
- Completed Fuel Break
- UAS Launch and Recovery Zone
- Fire Edge
- Administrative FS Boundary

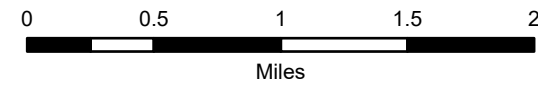


Transportation Map

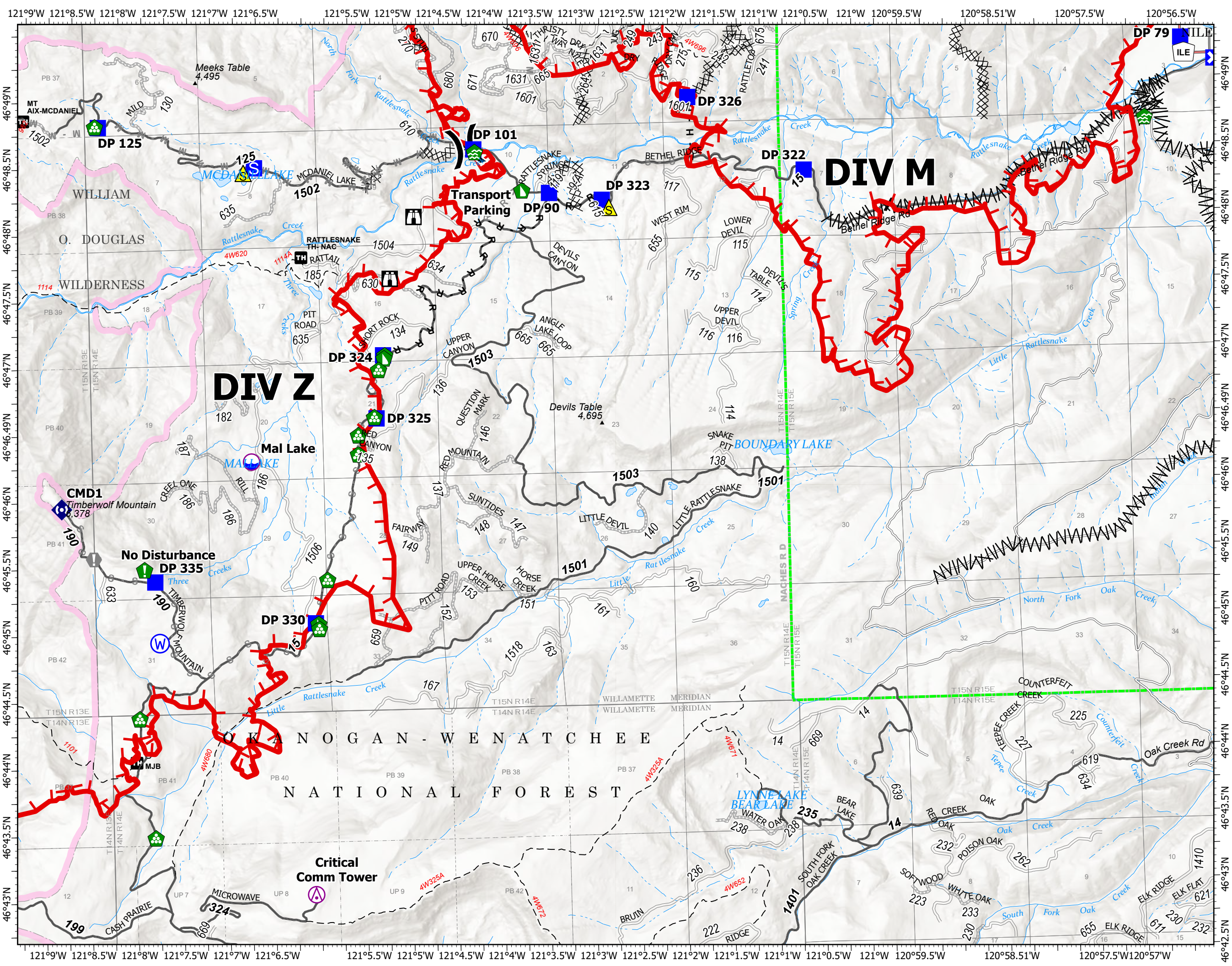
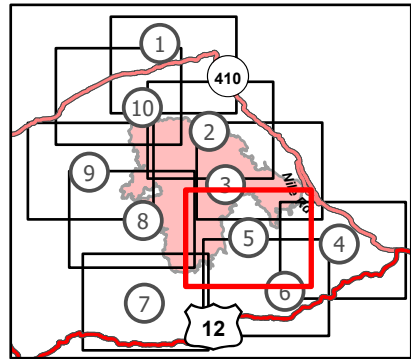
Schneider Springs
WAOWF-000453
8/20/2021

64,484 acres at 8/19/2021 1630

Page 5 of 10



- Aerial Hazard
- Dip Site
- Division Break
- Drop Point
- Closure
- Staging Area
- Lookout
- Value at Risk
- Water Development or Draft Site
- Resource Location
- Landing or Log Deck
- Dozer Push
- Repeater
- Safety Zone
- Water Source
- Completed Dozer Line
- Completed Fuel Break
- Completed Hand Line
- Completed Road as Line
- Planned Dozer Line
- Planned Mixed Construction Line
- Planned Road as Line
- Planned Secondary Line
- Other
- Fire Edge
- Administrative FS Boundary
- FS Wilderness Boundary

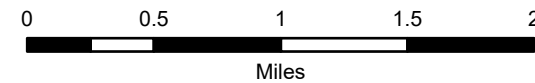


Transportation Map

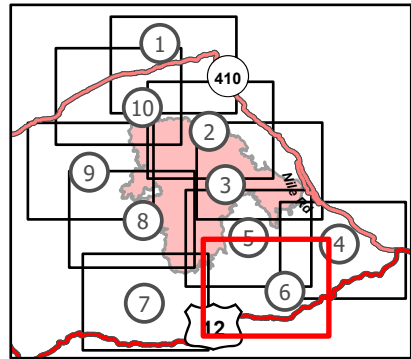
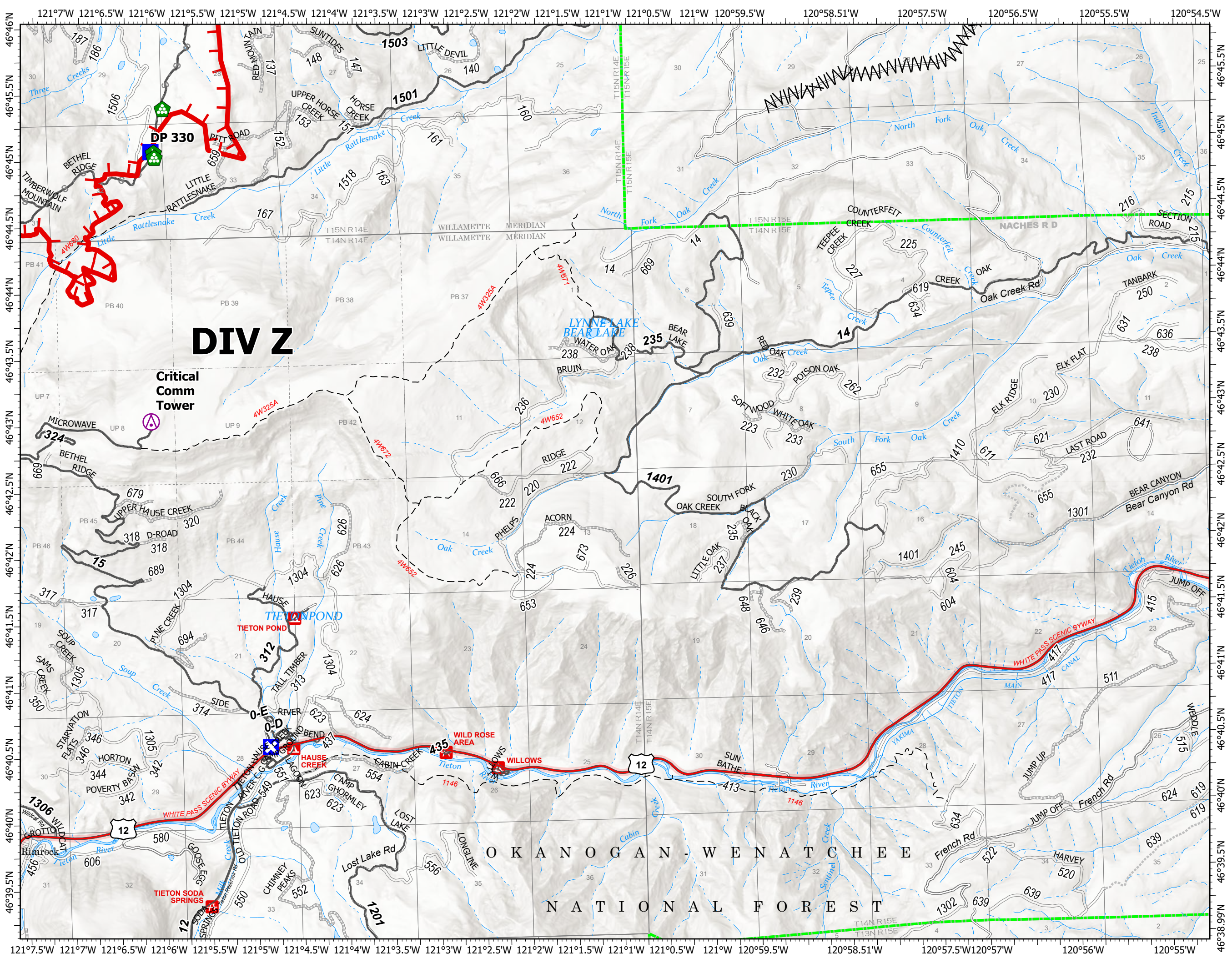
Schneider Springs
 WAOWF-000453
 8/20/2021

64,484 acres at 8/19/2021 1630

Page 6 of 10



- Aerial Hazard
- Drop Point
- Closure
- Landing or Log Deck
- Dozer Push
- Water Source
- Completed Fuel Break
- Planned Secondary Line
- Fire Edge
- Administrative FS Boundary



8/20/2021 0512
 Acres from IR
 North American 1983 Datum.
 Lat/Long Grid



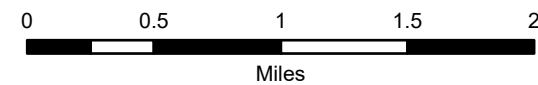
O K A N O G A N - W E N A T C H E E
 N A T I O N A L F O R E S T

Transportation Map

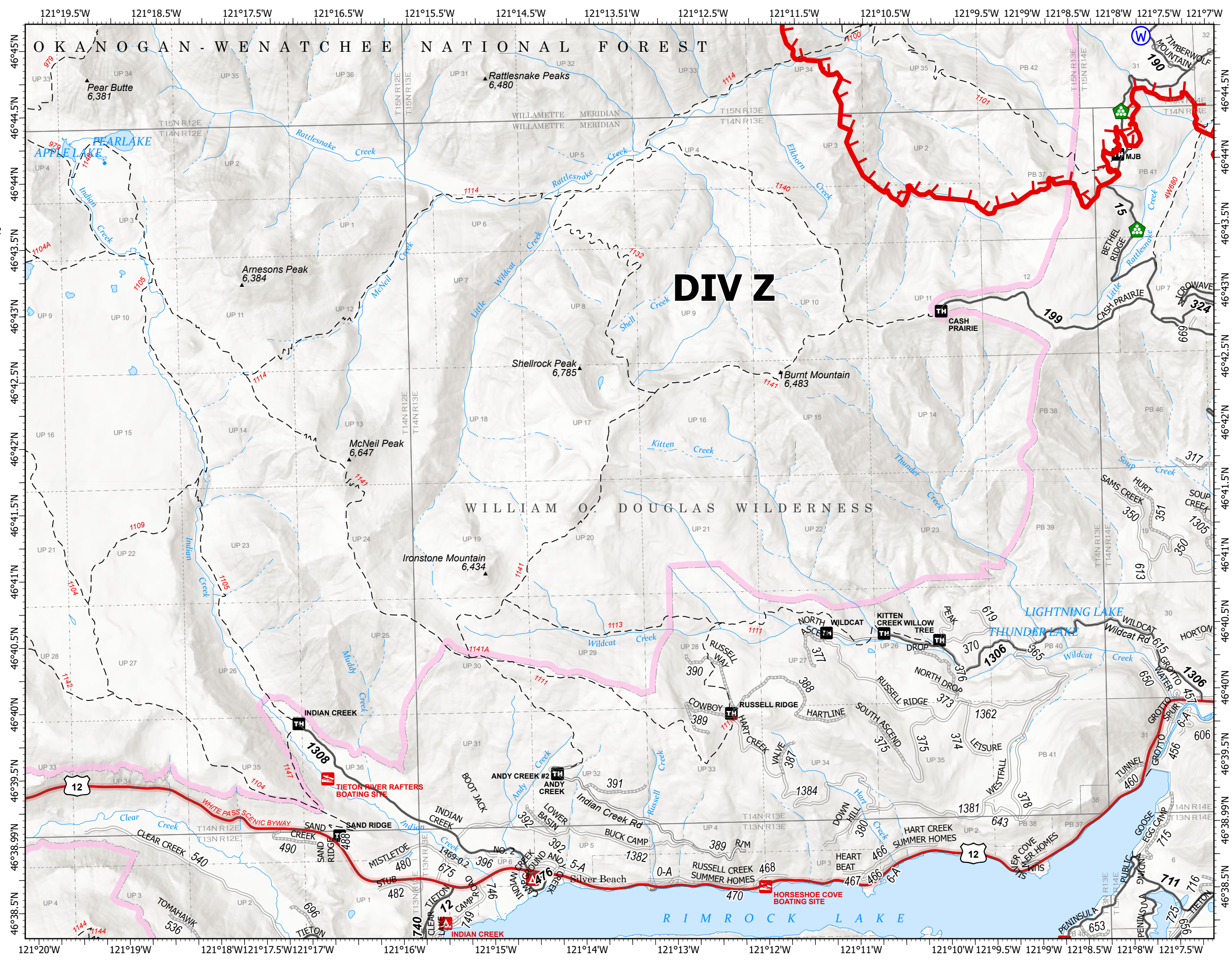
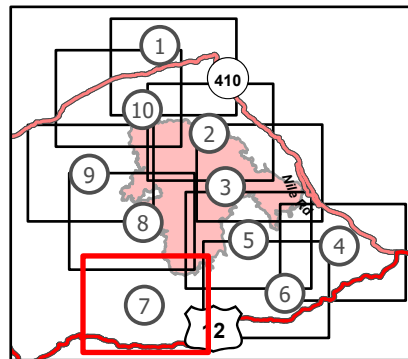
Schneider Springs
 WAOWF-000453
 8/20/2021

64,484 acres at 8/19/2021 1630

Page 7 of 10



- Landing or Log Deck
- Water Source
- Planned Secondary Line
- Other
- Fire Edge
- Administrative FS Boundary
- FS Wilderness Boundary

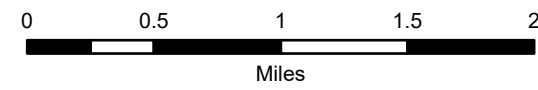


Transportation Map

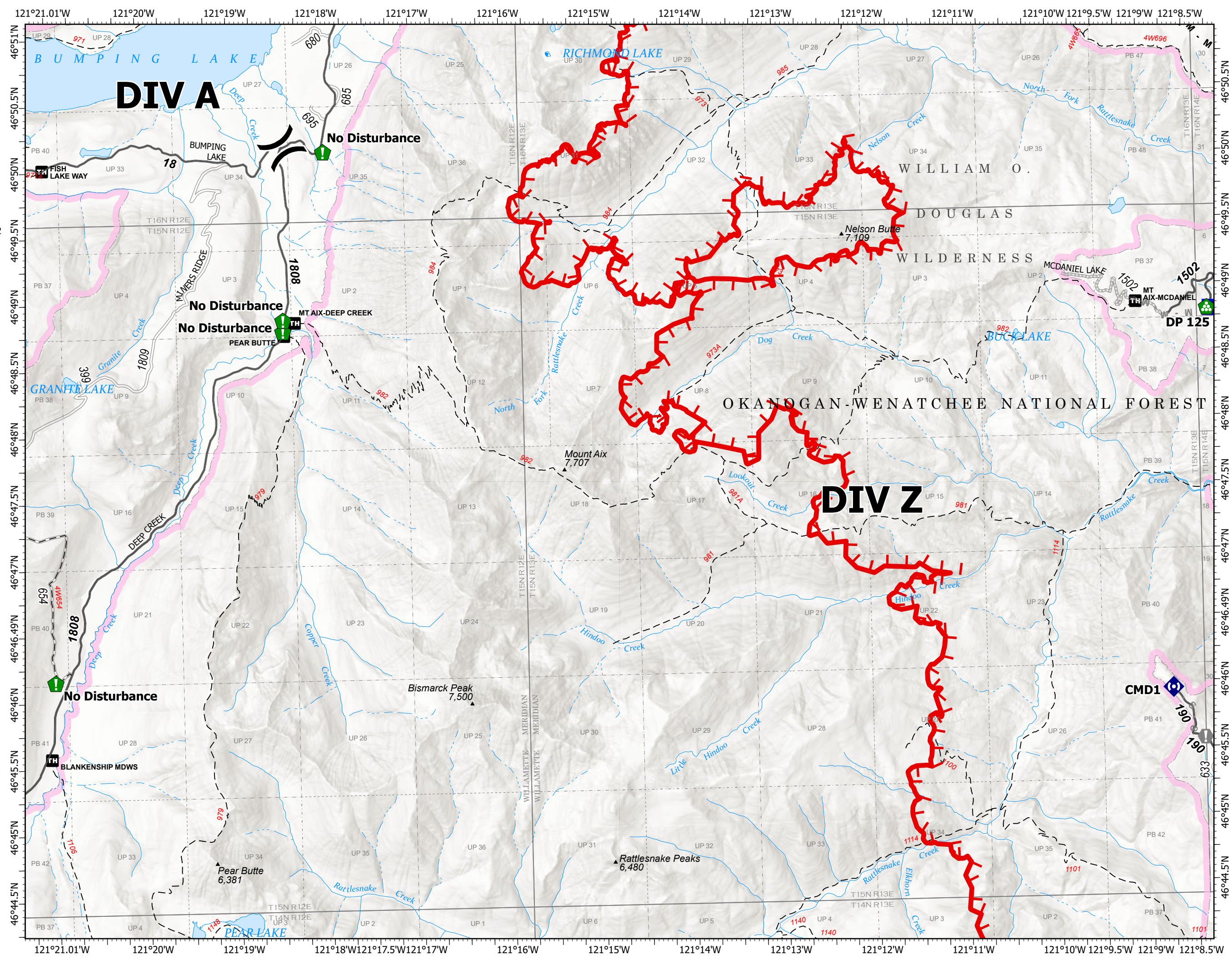
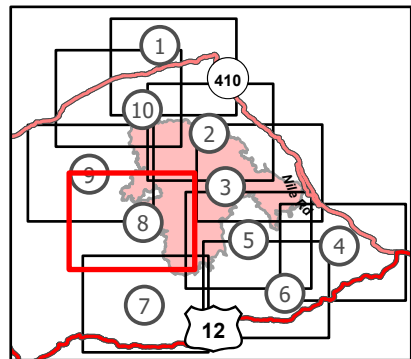
Schneider Springs
WAOWF-000453
8/20/2021

64,484 acres at 8/19/2021 1630

Page 8 of 10



- (X) Division Break
- Drop Point
- ⚠ Value at Risk
- 📍 Resource Location
- 🏠 Landing or Log Deck
- 📶 Repeater
- ⌘ Completed Dozer Line
- M - Completed Mixed Construction Line
- R - Completed Road as Line
- M - Planned Mixed Construction Line
- S - Planned Secondary Line
- 🔴 Fire Edge
- 🟩 Administrative FS Boundary
- 🟪 FS Wilderness Boundary

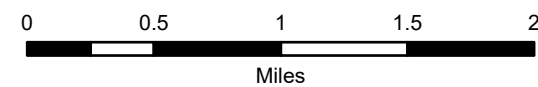


Transportation Map

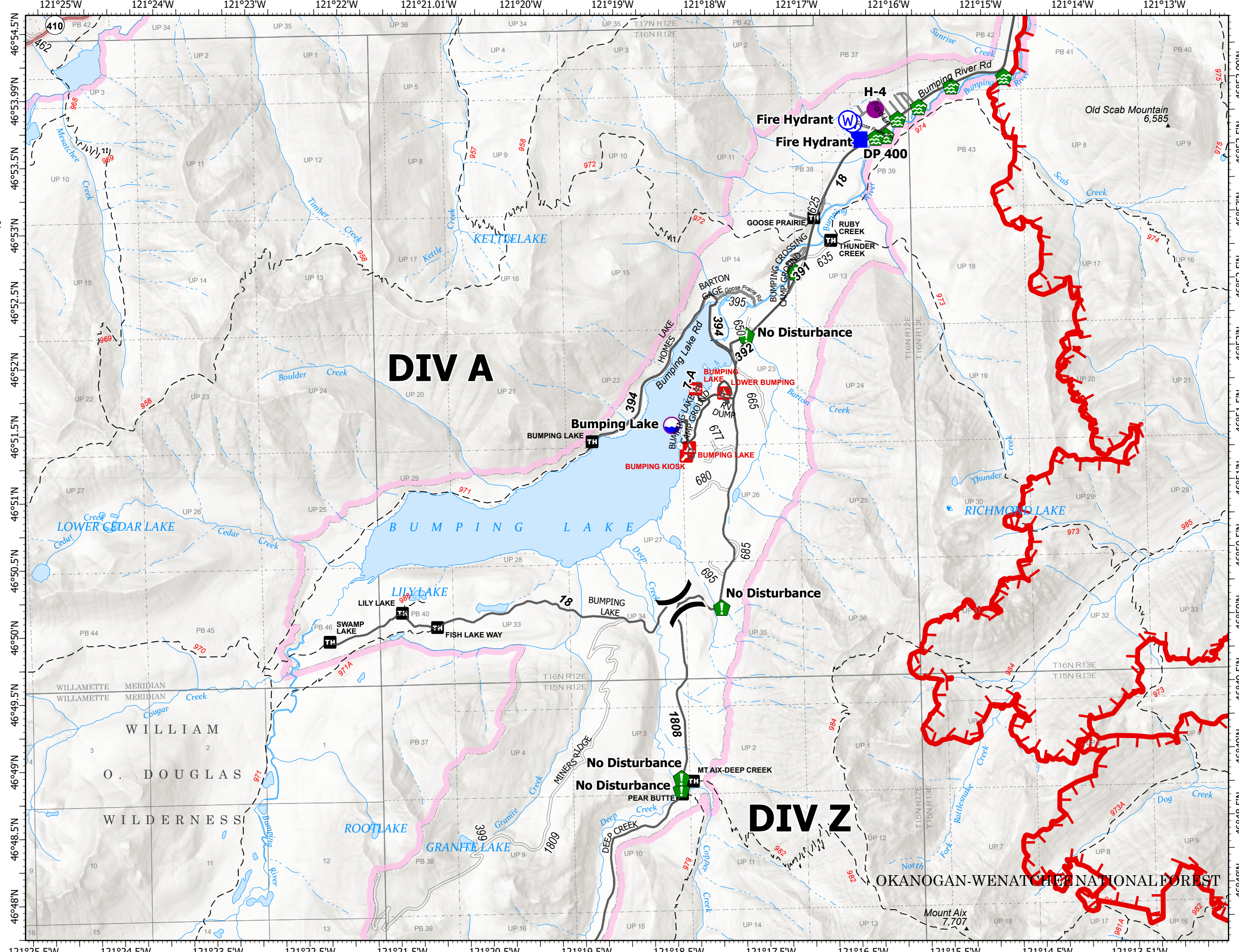
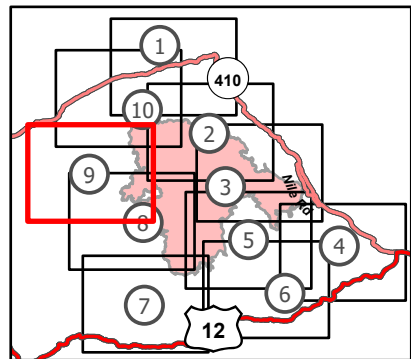
Schneider Springs
WAOWF-000453
8/20/2021

64,484 acres at 8/19/2021 1630

Page 9 of 10



- Dip Site
- Helispot
- Division Break
- Drop Point
- Water Development or Draft Site
- Resource Location
- Landing or Log Deck
- Water Source
- Fire Edge
- Administrative FS Boundary
- FS Wilderness Boundary

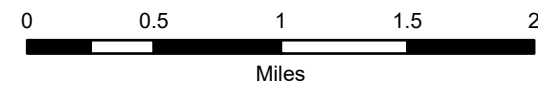


Transportation Map

Schneider Springs
 WAOWF-000453
 8/20/2021

64,484 acres at 8/19/2021 1630

Page 10 of 10



- Dip Site
- Helispot
- Division Break
- Drop Point
- Closure
- Lookout
- Value at Risk
- Bridge
- Water Development or Draft Site
- Landing or Log Deck
- Water Source
- Planned Fuel Break
- Planned Mixed Construction Line
- Fire Edge
- Administrative FS Boundary
- FS Wilderness Boundary

