

DIV A

Ops Map

Schneider Springs
WAOWF-000453

8/21/2021 Division Map

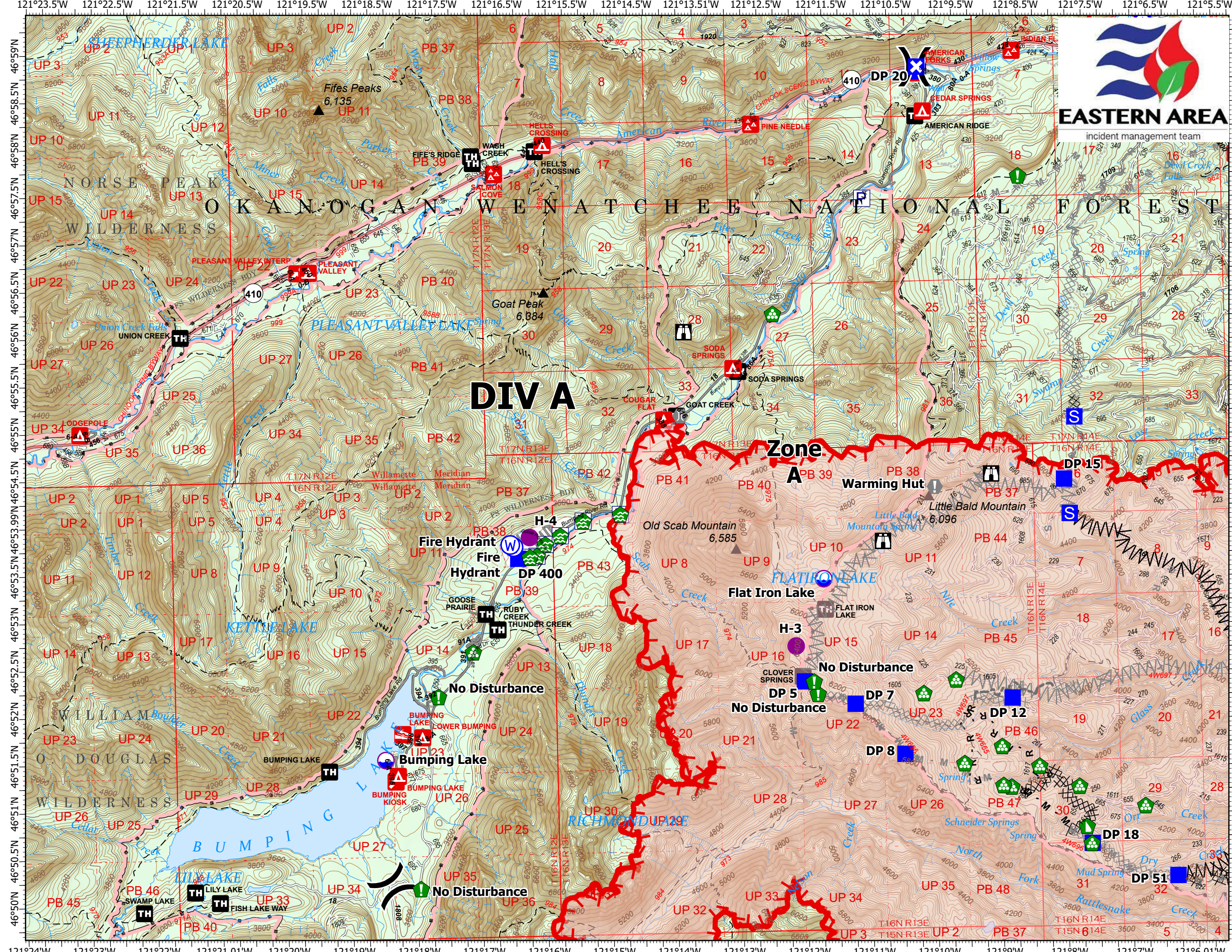
64,484 acres at 8/19/2021 1630

0 0.25 0.5 1 1.5 Miles

- Dip Site
- Helispot
- Division Break
- Drop Point
- Closure
- Staging Area
- Lookout
- Value at Risk
- Bridge
- Water Development or Draft Site
- Resource Location
- Landing or Log Deck
- Dozer Push
- Water Source
- Other
- Wildfire Daily Fire Perimeter
- Label Point
- Pump
- Completed Dozer Line
- Completed Fuel Break
- Completed Mixed Construction Line
- Completed Road as Line
- Planned Dozer Line
- Planned Fuel Break
- Planned Mixed Construction Line
- Planned Road as Line
- Planned Secondary Line
- Other
- Fire Edge



Steven LaVal, GISS Eastern Area
Silver IMT
8/21/2021 0511
Acres from IR
North American 1983 Datum.
Lat/Long Grid



EASTERN AREA

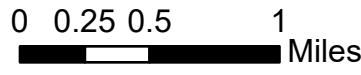
incident management team

DIV M

Ops Map

Schneider Springs
WAOWF-000453
8/21/2021 Division Map

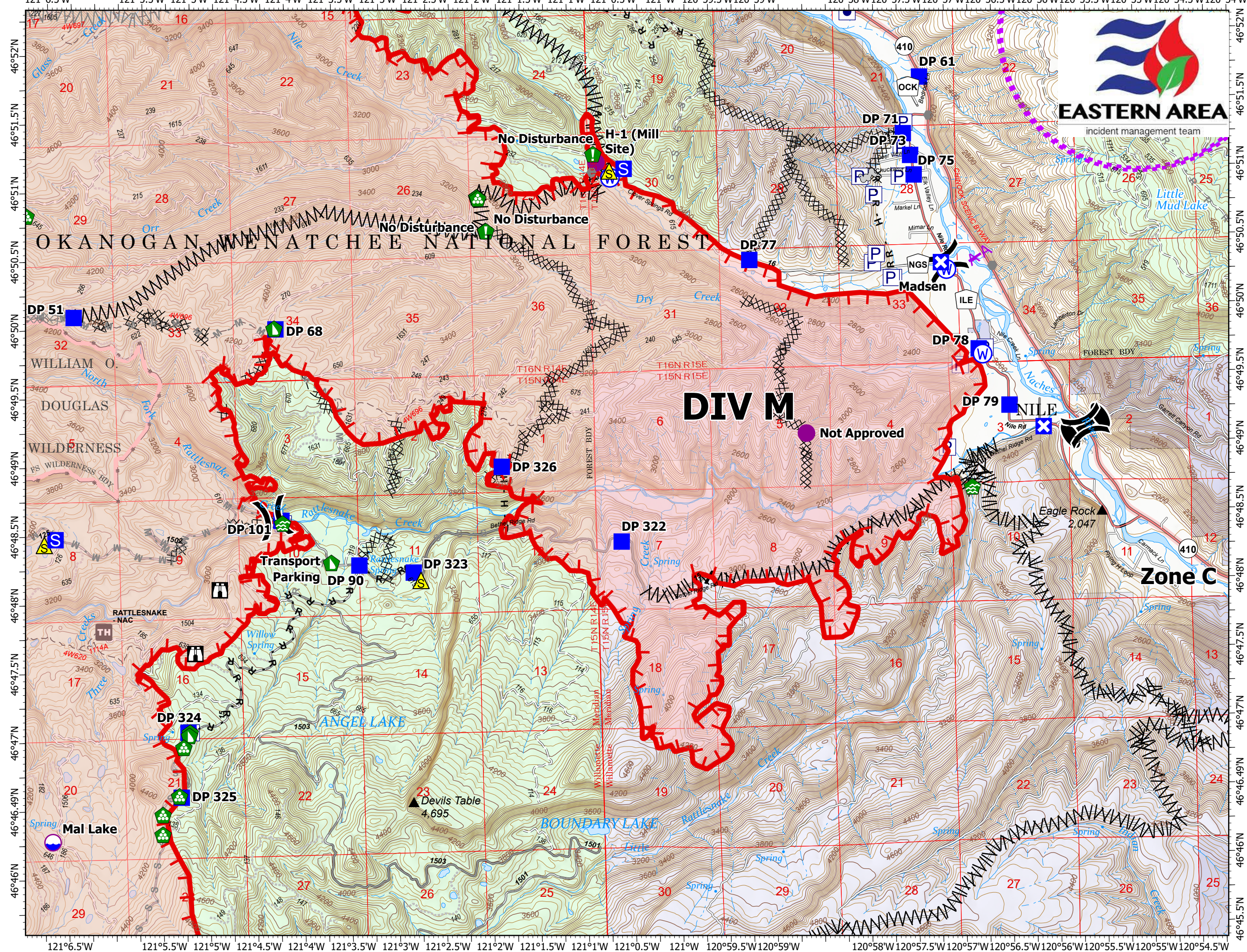
64,484 acres at 8/19/2021 1630



- Dip Site
- Helispot
- Division Break
- Zone Break
- Drop Point
- Closure
- Staging Area
- Lookout
- Other
- Water Development or Draft Site
- Resource Location
- Landing or Log Deck
- Dozer Push
- Safety Zone
- Water Source
- Other
- Wildfire Daily Fire Perimeter
- Label Point
- Other Property
- Pump
- Water Tank
- Completed Dozer Line
- Completed Fuel Break
- Completed Hand Line
- Completed Road as Line
- Planned Dozer Line
- Planned Fuel Break
- Planned Mixed Construction Line
- Planned Road as Line
- Planned Secondary Line
- Access or Improved Road
- Aerial Hazard
- UAS Launch and Recovery Zone
- Fire Edge



Steven LaVal, GISS Eastern Area
Silver IMT
8/21/2021 0511
Acres from IR
North American 1983 Datum.
LatLong Grid

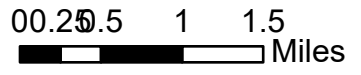


121°06.5'W 121°05.5'W 121°04.5'W 121°03.5'W 121°02.5'W 121°01.5'W 121°00.5'W 121°00'W 120°59.5'W 120°59'W 120°58.5'W 120°57.5'W 120°57'W 120°56.5'W 120°56'W 120°55.5'W 120°55'W 120°54.5'W

DIV Z Ops Map

Schneider Springs
WAOWF-000453
8/21/2021 Division Map

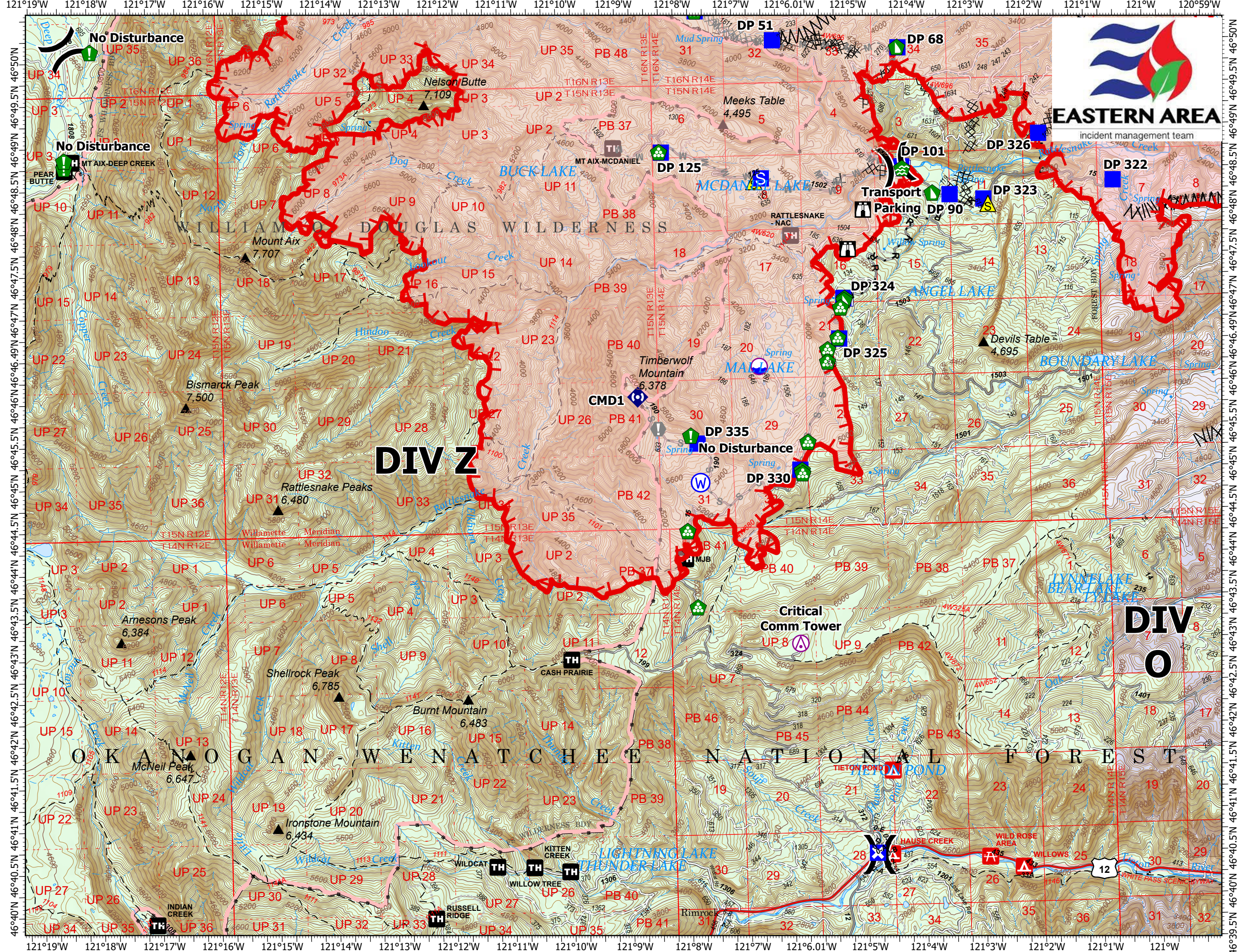
64,484 acres at 8/19/2021 1630



- Aerial Hazard
- Dip Site
- Helispot
- Division Break
- Drop Point
- Closure
- Staging Area
- Lookout
- Value at Risk
- Water Development or Draft Site
- Resource Location
- Landing or Log Deck
- Dozer Push
- Repeater
- Safety Zone
- Water Source
- Other
- Wildfire Daily Fire Perimeter
- Label Point
- Pump
- Water Tank
- Completed Dozer Line
- Completed Fuel Break
- Completed Hand Line
- Completed Road as Line
- Planned Dozer Line
- Planned Mixed Construction Line
- Planned Road as Line
- Planned Secondary Line
- Other
- Fire Edge



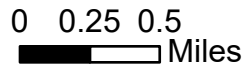
Steven LaVal, GISS Eastern Area
Silver IMT
8/21/2021 0512
Acres from IR
North American 1983 Datum.
LatLong Grid



**DIV
O**

DIV D
Ops Map
 Schneider Springs
 WAOWF-000453
 8/21/2021 Division Map

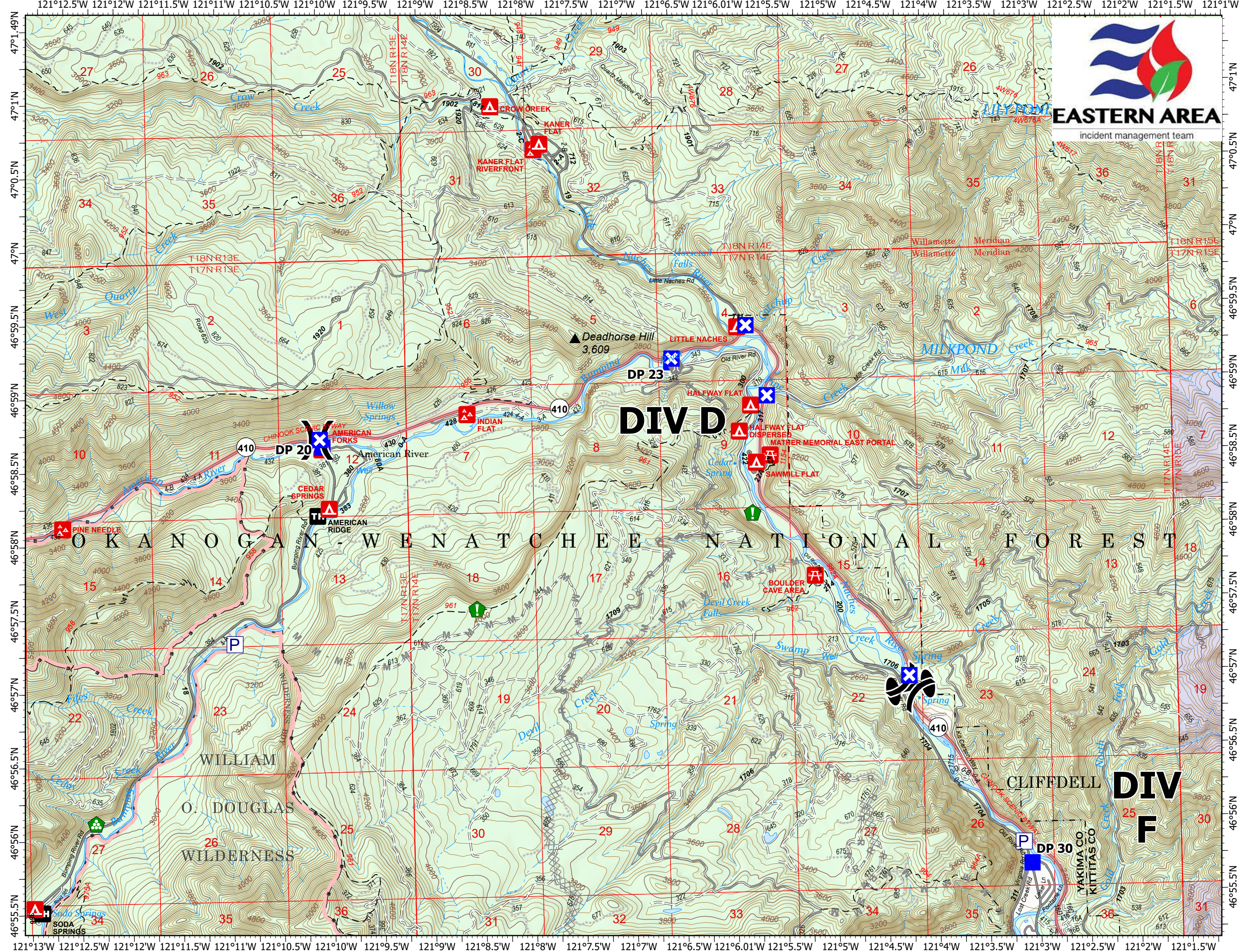
64,484 acres at 8/19/2021 1630



- (X) Division Break
- ~ Zone Break
- Drop Point
- ⊠ Closure
- ⬢ Bridge
- 🌿 Resource Location
- 🏠 Landing or Log Deck
- ▭ Other
- Label Point
- P Pump
- ⊗⊗ Planned Dozer Line
- M - Planned Mixed Construction Line
- R - Planned Road as Line



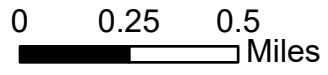
Steven LaVal, GISS Eastern Area
 Silver IMT
 8/21/2021 0512
 Acres from IR
 North American 1983 Datum.
 LatLong Grid



DIV F Ops Map

Schneider Springs
WAOWF-000453
8/21/2021 Division Map

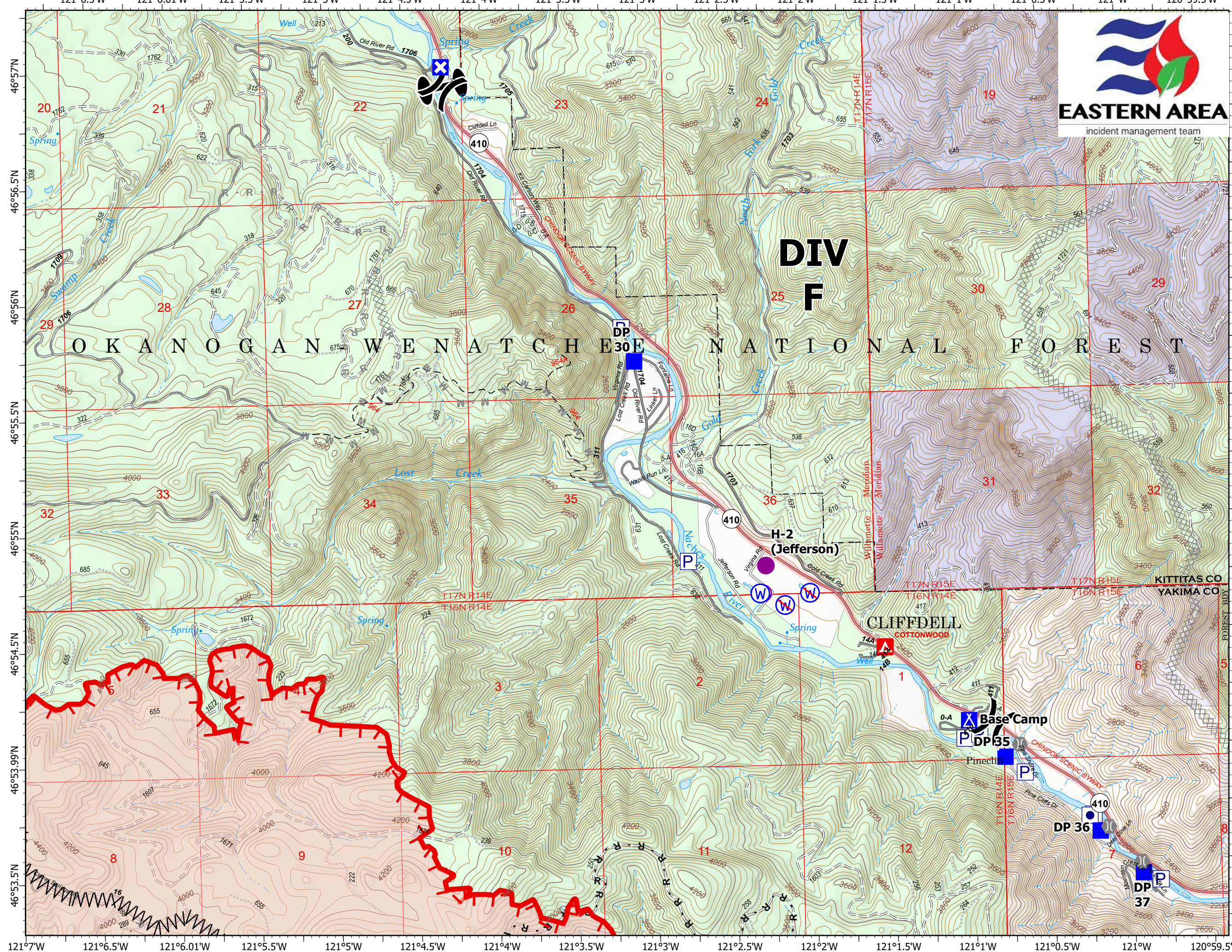
64,484 acres at 8/19/2021 1630



- Dip Site
- Helispot
- Division Break
- Zone Break
- Drop Point
- Closure
- Camp
- Bridge
- Water Source
- Restricted Water Source
- Wildfire Daily Fire Perimeter
- Label Point
- Other Property
- Pump
- Completed Fuel Break
- Completed Road as Line
- Planned Dozer Line
- Planned Mixed Construction Line
- Planned Road as Line
- Fire Edge



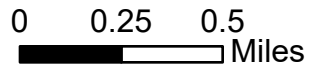
Steven LaVal, GISS Eastern Area
Silver IMT
8/21/2021 0512
Acres from IR
North American 1983 Datum.
LatLong Grid



DIV H Ops Map

Schneider Springs
WAOWF-000453
8/21/2021 Division Map

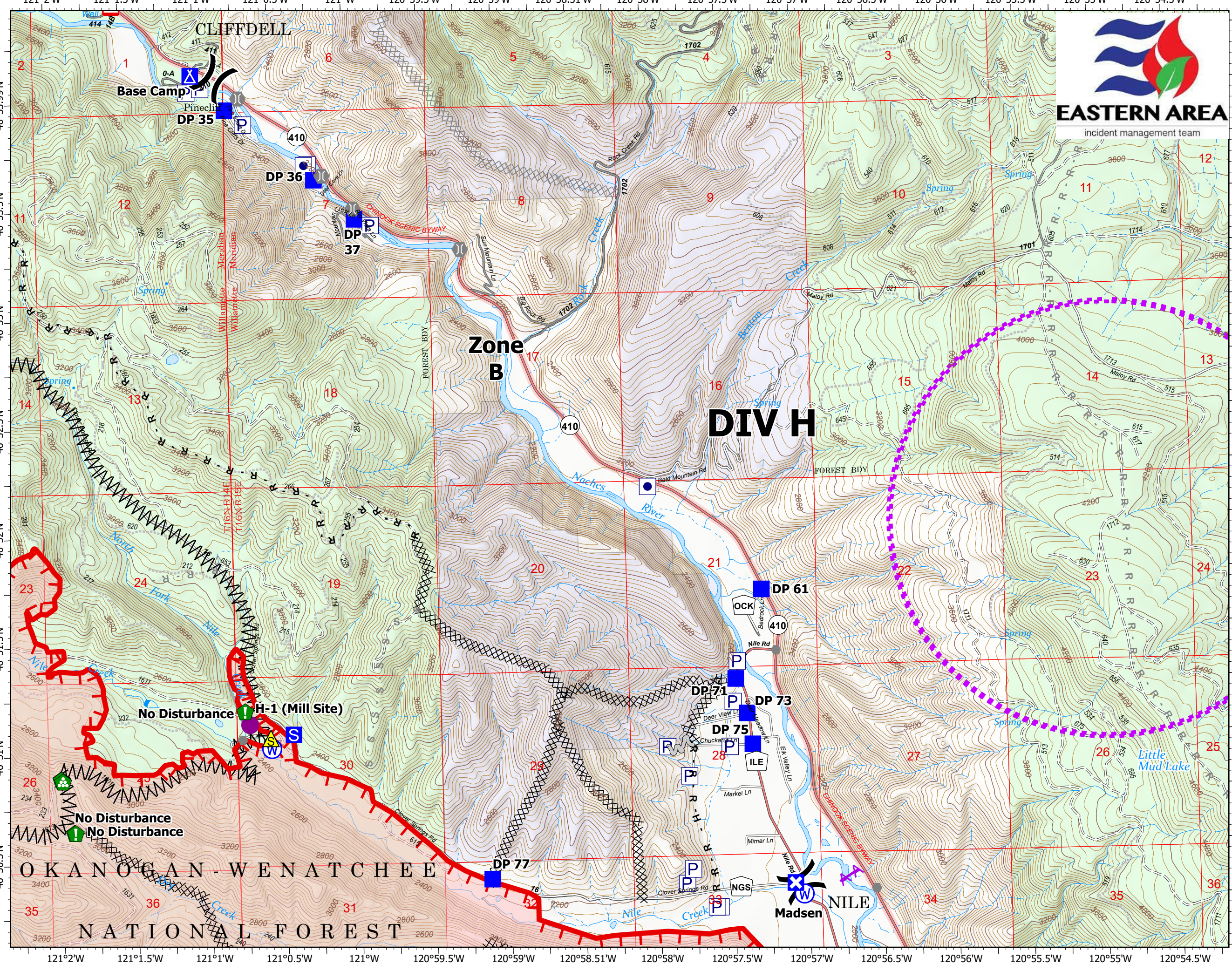
64,484 acres at 8/19/2021 1630



- Helispot
- Division Break
- Drop Point
- Closure
- Camp
- Staging Area
- Other
- Bridge
- Resource Location
- Landing or Log Deck
- Dozer Push
- Safety Zone
- Water Source
- Other
- Wildfire Daily Fire Perimeter
- Label Point
- Other Property
- Pump
- Completed Dozer Line
- Completed Fuel Break
- Completed Hand Line
- Completed Road as Line
- Planned Dozer Line
- Planned Road as Line
- Planned Secondary Line
- Access or Improved Road
- Aerial Hazard
- UAS Launch and Recovery Zone
- Fire Edge

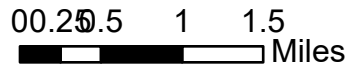


Steven LaVal, GISS Eastern Area
Silver IMT
8/21/2021 0513
Acres from IR
North American 1983 Datum.
LatLong Grid



DIV O
Ops Map
 Schneider Springs
 WAOWF-000453
 8/21/2021 Division Map

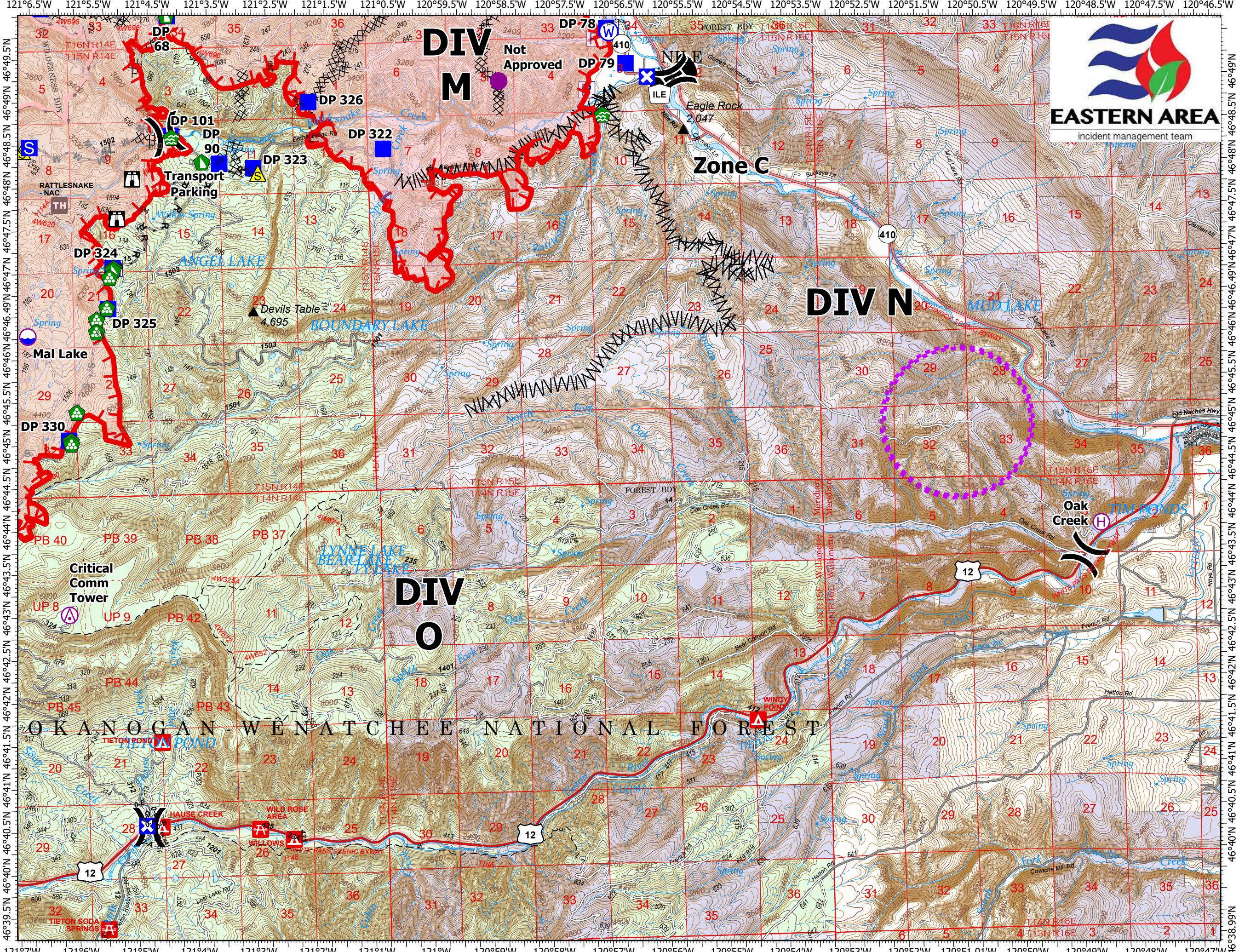
64,484 acres at 8/19/2021 1630



- Aerial Hazard
- Dip Site
- Helispot
- Helibase
- Division Break
- Zone Break
- Drop Point
- Closure
- Staging Area
- Lookout
- Water Development or Draft Site
- Landing or Log Deck
- Dozer Push
- Safety Zone
- Water Source
- Wildfire Daily Fire Perimeter
- Label Point
- Pump
- Water Tank
- Completed Dozer Line
- Completed Fuel Break
- Completed Hand Line
- Completed Road as Line
- Planned Dozer Line
- Planned Mixed Construction Line
- Planned Road as Line
- Planned Secondary Line
- UAS Launch and Recovery Zone
- Fire Edge



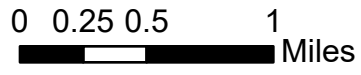
Steven LaVal, GISS Eastern Area
 Silver IMT
 8/21/2021 0513
 Acres from IR
 North American 1983 Datum.
 LatLong Grid



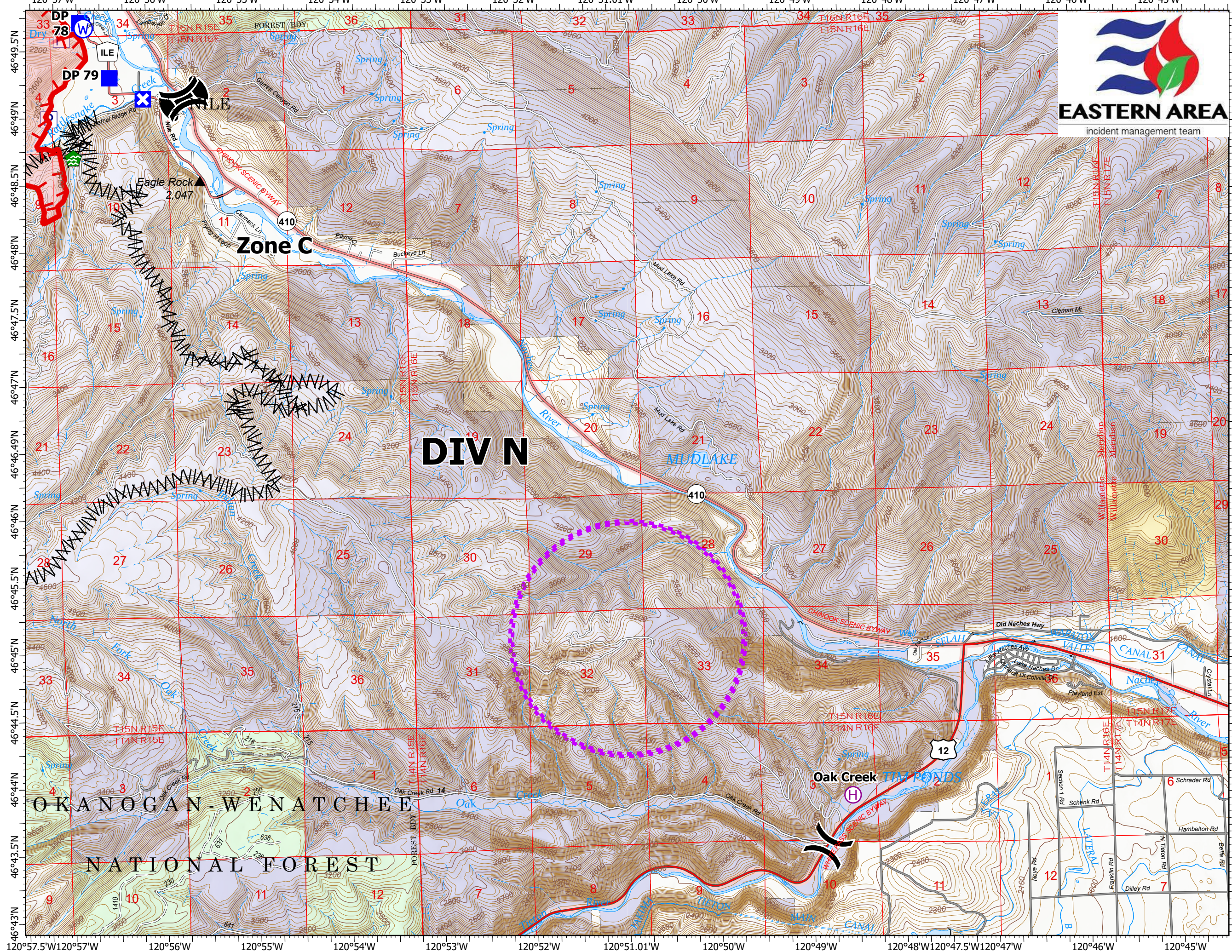
DIV N Ops Map

Schneider Springs
WAOWF-000453
8/21/2021 Division Map

64,484 acres at 8/19/2021 1630



- Helibase
- Division Break
- Zone Break
- Drop Point
- Closure
- Water Development or Draft Site
- Water Source
- Wildfire Daily Fire Perimeter
- Label Point
- Pump
- Completed Fuel Break
- UAS Launch and Recovery Zone
- Fire Edge



Steven LaVal, GISS Eastern Area
Silver IMT
8/21/2021 0513
Acres from IR
North American 1983 Datum.
LatLong Grid