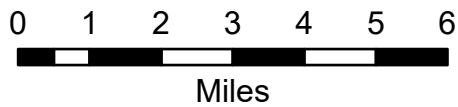


Transportation Map Index

Schneider Springs
WAOWF-000453
8/21/2021

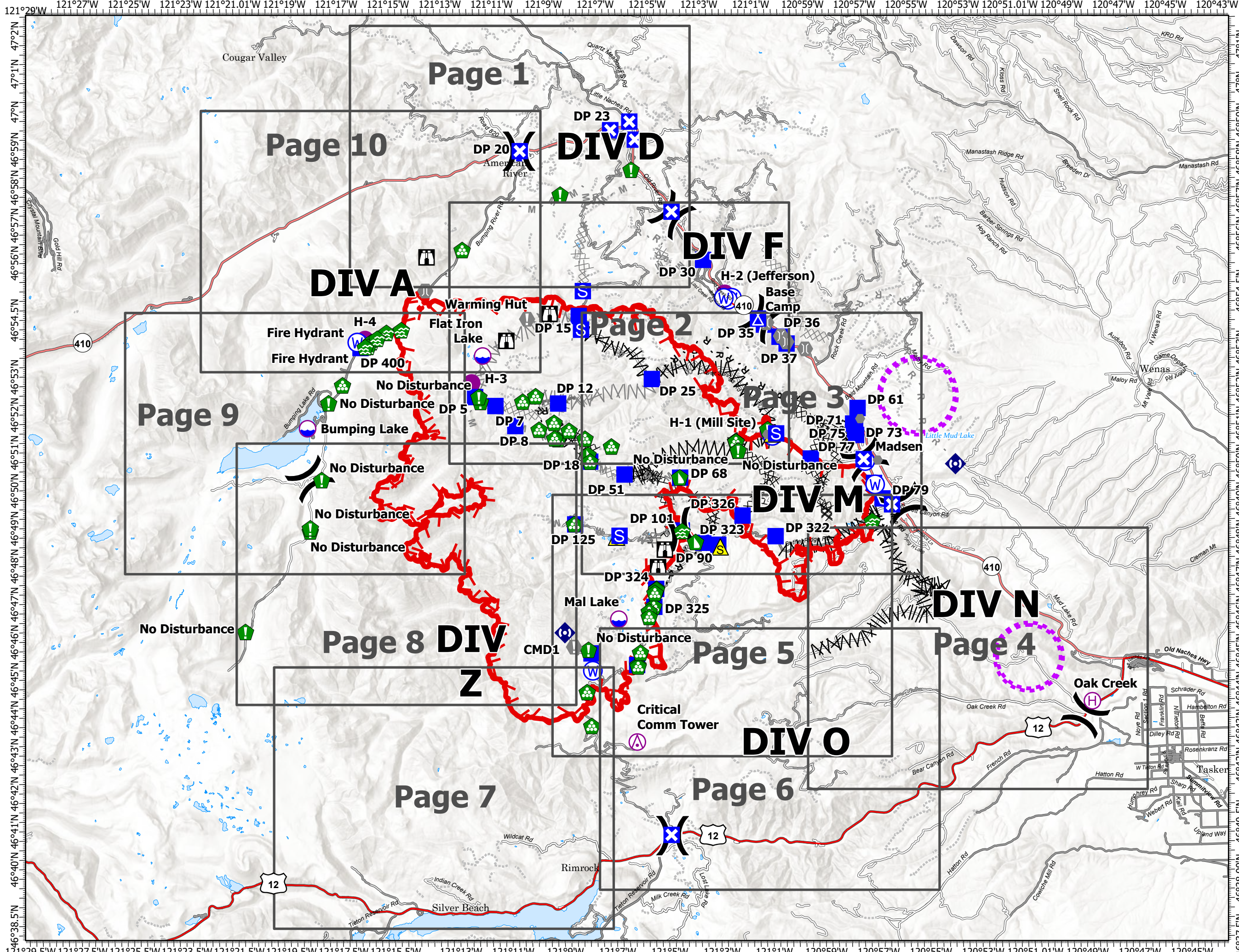
64,484 acres at 8/19/2021 1630



- Aerial Hazard
- Dip Site
- Helispot
- Helibase
- Division Break
- Drop Point
- Closure
- Camp
- Staging Area
- Lookout
- Value at Risk
- Other
- Bridge
- Water Development or Draft Site
- Resource Location
- Landing or Log Deck
- Dozer Push
- Repeater
- Safety Zone
- Water Source
- Restricted Water Source
- Completed Dozer Line
- Completed Fuel Break
- Completed Hand Line
- Completed Mixed Construction Line
- Completed Road as Line
- Planned Dozer Line
- Planned Fuel Break
- Planned Mixed Construction Line
- Planned Road as Line
- Planned Secondary Line
- Access or Improved Road
- Other
- Aerial Hazard
- UAS Launch and Recovery Zone
- Fire Edge
- Grid Index



DBurbank
8/20/2021 1717
Acres from IR
North American 1983 Datum.
Lat/Long Grid

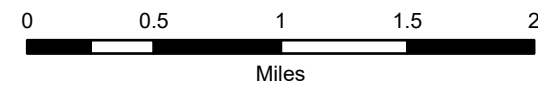


Transportation Map

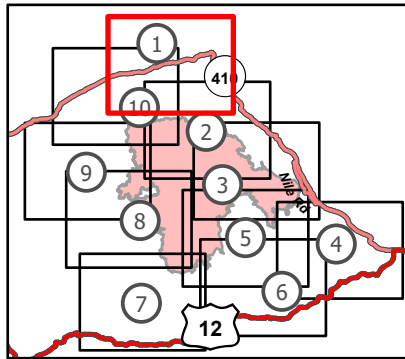
Schneider Springs
WAOWF-000453
8/21/2021

64,484 acres at 8/19/2021 1630

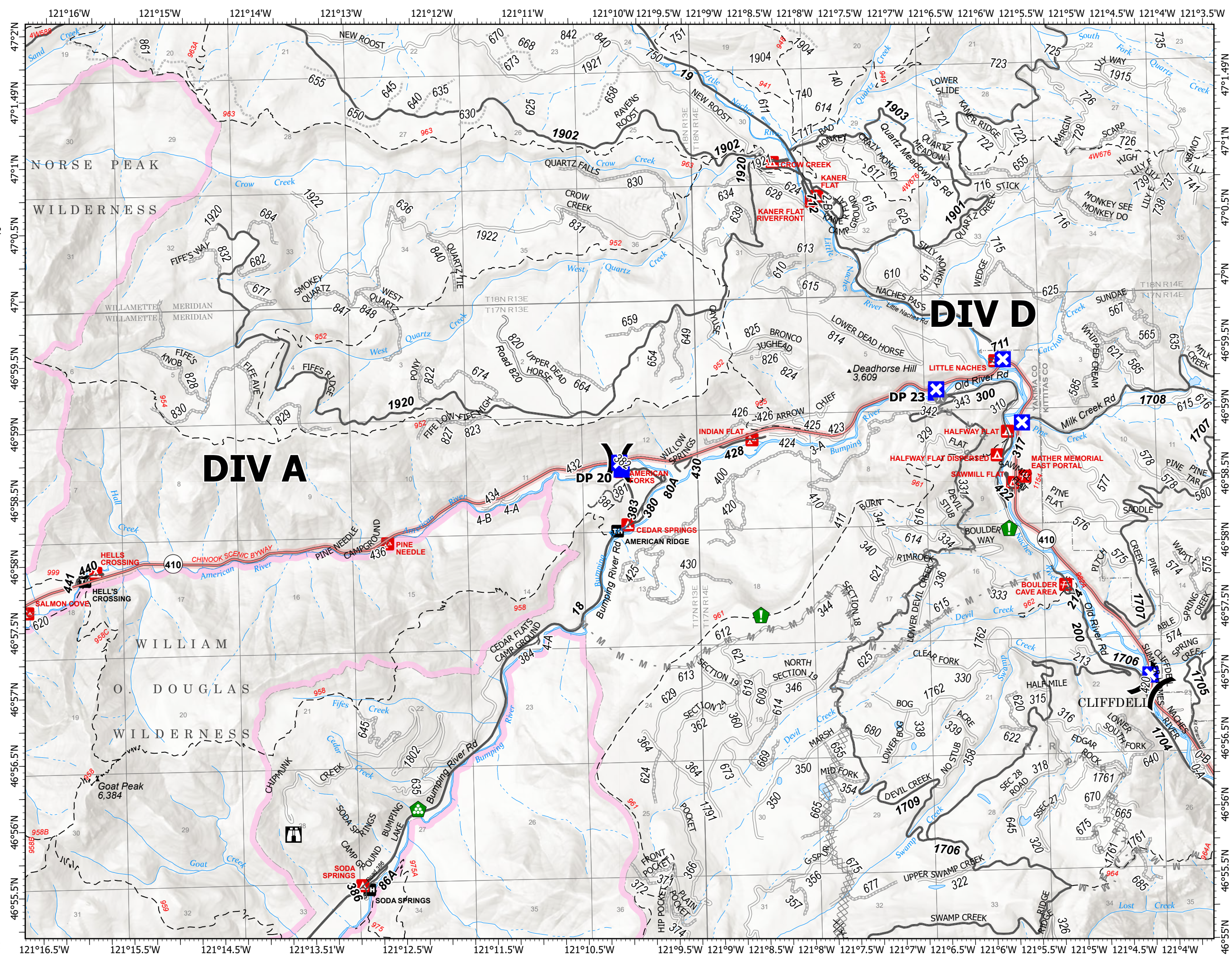
Page 1 of 10



- (X) Division Break
- Drop Point
- ⊠ Closure
- ⊠ Staging Area
- 🏠 Lookout
- 🌲 Resource Location
- 🚚 Landing or Log Deck
- ⊠ Completed Dozer Line
- ⊠ Planned Dozer Line
- M - Planned Mixed Construction Line
- R - Planned Road as Line
- 🟩 Administrative FS Boundary
- 🟪 FS Wilderness Boundary



8/20/2021 1759
Acres from IR
North American 1983 Datum.
Lat/Long Grid



121°16.5'W 121°15.5'W 121°14.5'W 121°13.5'W 121°12.5'W 121°11.5'W 121°10.5'W 121°9.5'W 121°9'W 121°8.5'W 121°8'W 121°7.5'W 121°7'W 121°6.5'W 121°6'W 121°5.5'W 121°5'W 121°4.5'W 121°4'W

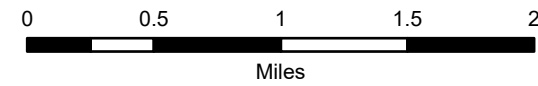
47°2'N 47°1.49'N 47°1'N 47°0.5'N 47°N 46°59.5'N 46°59'N 46°58.5'N 46°58'N 46°57.5'N 46°57'N 46°56.5'N 46°56'N 46°55.5'N

Transportation Map

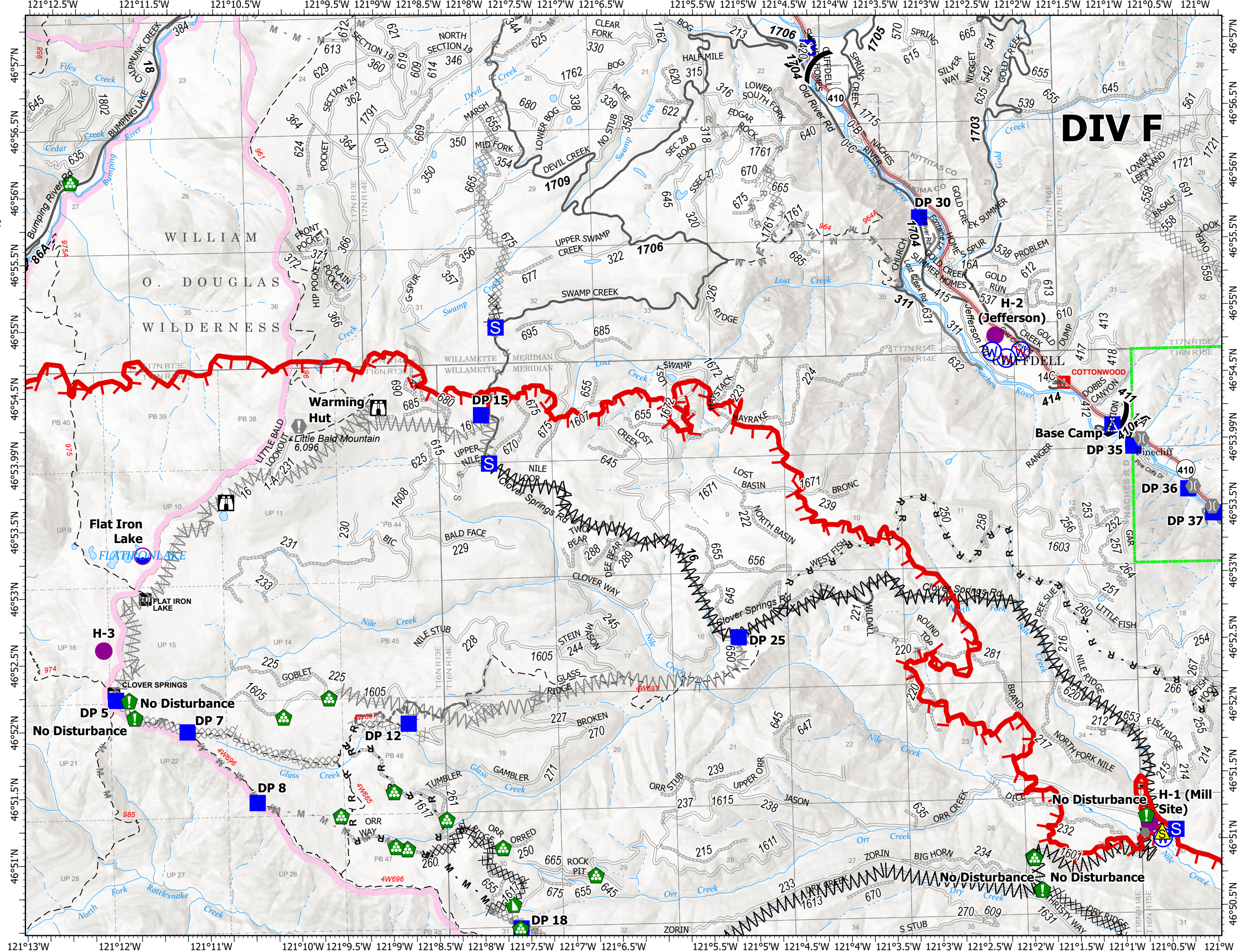
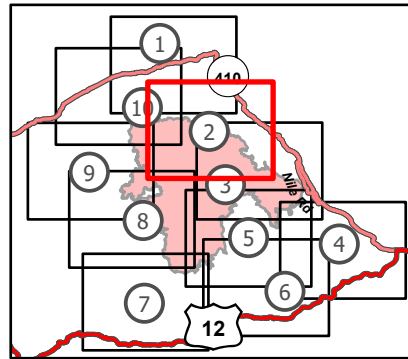
Schneider Springs
WAOWF-000453
8/21/2021

64,484 acres at 8/19/2021 1630

Page 2 of 10



- Dip Site
- Helispot
- Division Break
- Drop Point
- Closure
- Camp
- Staging Area
- Lookout
- Value at Risk
- Other
- Bridge
- Resource Location
- Landing or Log Deck
- Dozer Push
- Safety Zone
- Water Source
- Restricted Water Source
- Completed Dozer Line
- Completed Fuel Break
- Completed Mixed Construction Line
- Completed Road as Line
- Planned Dozer Line
- Planned Fuel Break
- Planned Mixed Construction Line
- Planned Road as Line
- Planned Secondary Line
- Other
- Fire Edge
- Administrative FS Boundary
- FS Wilderness Boundary



DIV F

H-2 (Jefferson)

Base Camp

No Disturbance H-1 (Mill Site)

No Disturbance

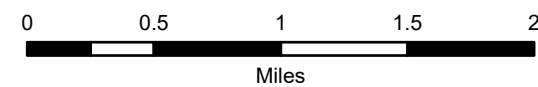
No Disturbance

Transportation Map

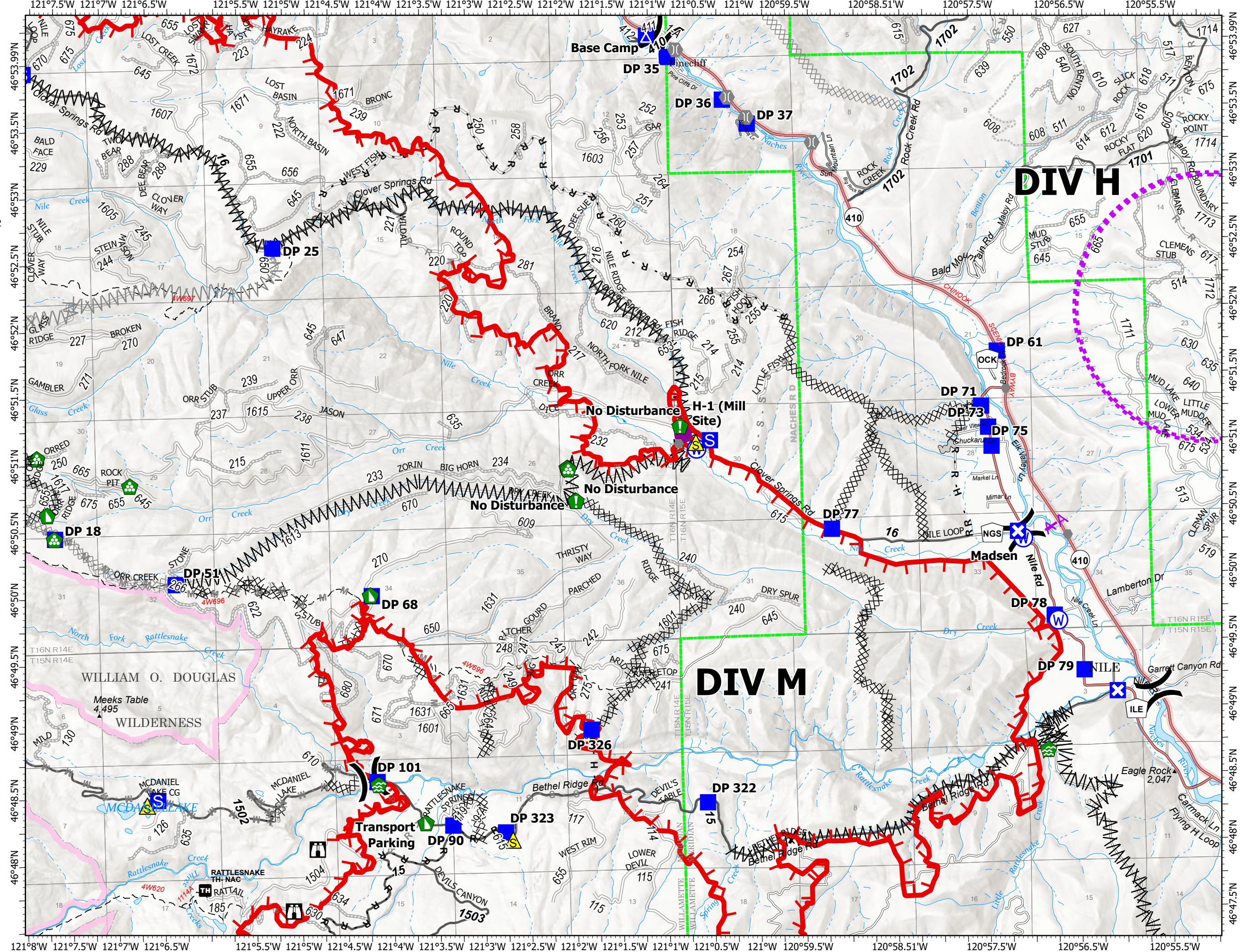
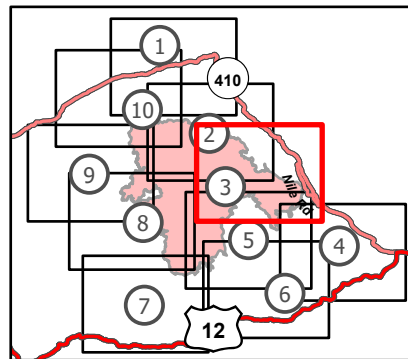
Schneider Springs
WAOWF-000453
8/21/2021

64,484 acres at 8/19/2021 1630

Page 3 of 10



- Helispot
- X Division Break
- Drop Point
- Closure
- Camp
- Staging Area
- Lookout
- Other
- Bridge
- Water Development or Draft Site
- Resource Location
- Landing or Log Deck
- Dozer Push
- ▲ Safety Zone
- W Water Source
- X Completed Dozer Line
- X Completed Fuel Break
- H Completed Hand Line
- M Completed Mixed Construction Line
- R Completed Road as Line
- X Planned Dozer Line
- X Planned Fuel Break
- M Planned Mixed Construction Line
- R Planned Road as Line
- S Planned Secondary Line
- Access or Improved Road
- Aerial Hazard
- UAS Launch and Recovery Zone
- Fire Edge
- Administrative FS Boundary
- FS Wilderness Boundary

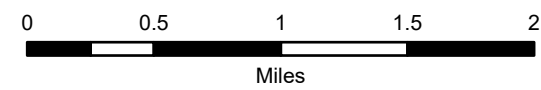


Transportation Map

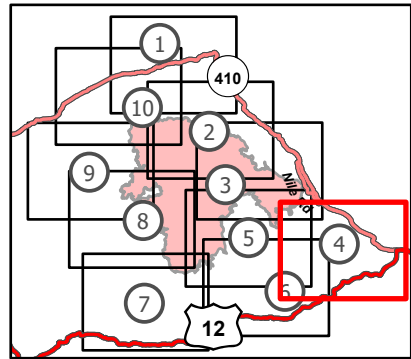
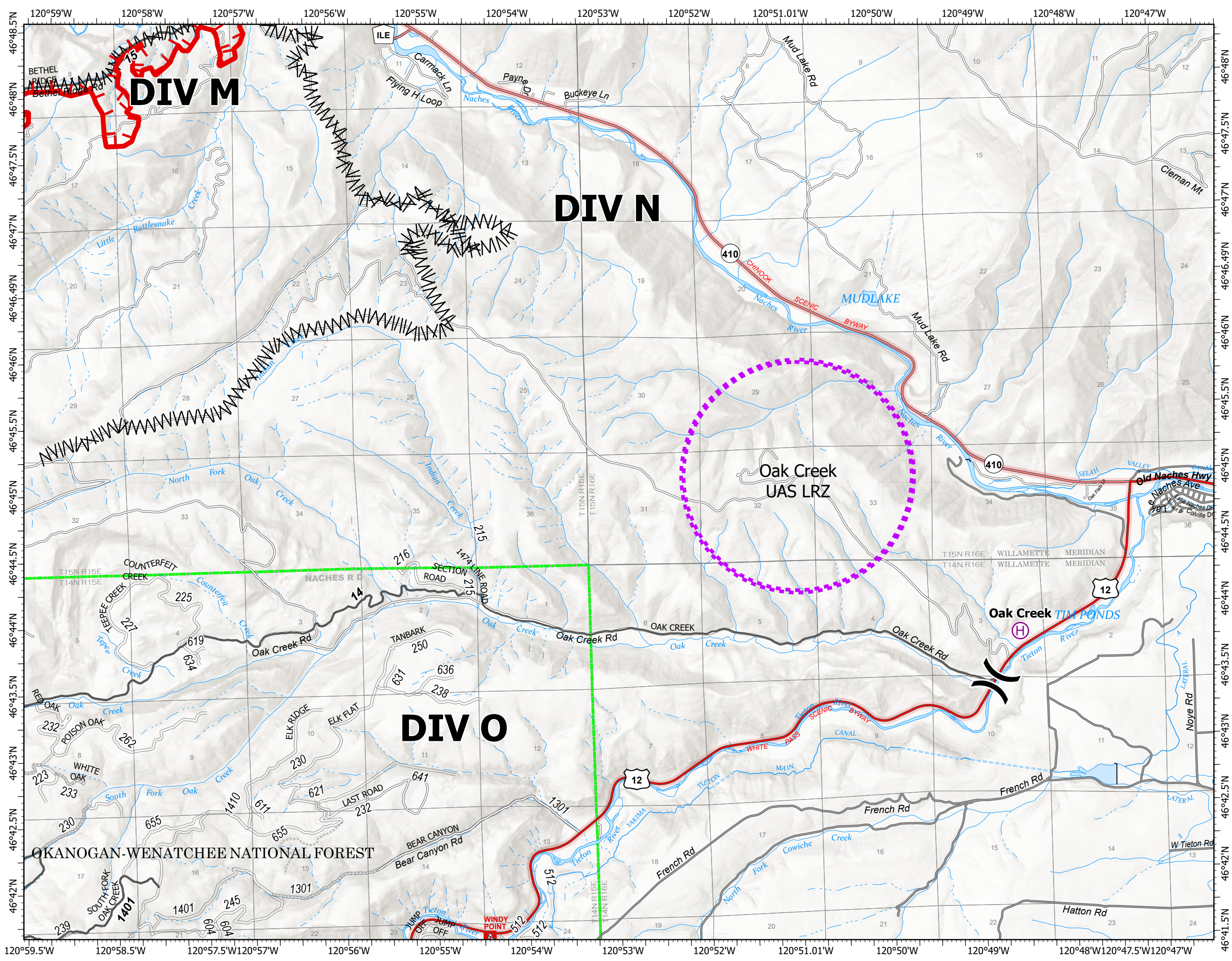
Schneider Springs
WAOWF-000453
8/21/2021

64,484 acres at 8/19/2021 1630

Page 4 of 10



- Helibase
- Division Break
- Water Development or Draft Site
- Completed Fuel Break
- UAS Launch and Recovery Zone
- Fire Edge
- Administrative FS Boundary



8/20/2021 1759
Acres from IR
North American 1983 Datum.
Lat/Long Grid



Transportation Map

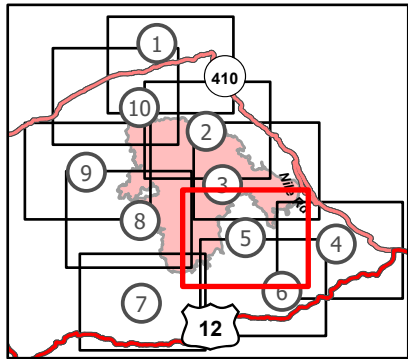
Schneider Springs
WAOWF-000453
8/21/2021

64,484 acres at 8/19/2021 1630

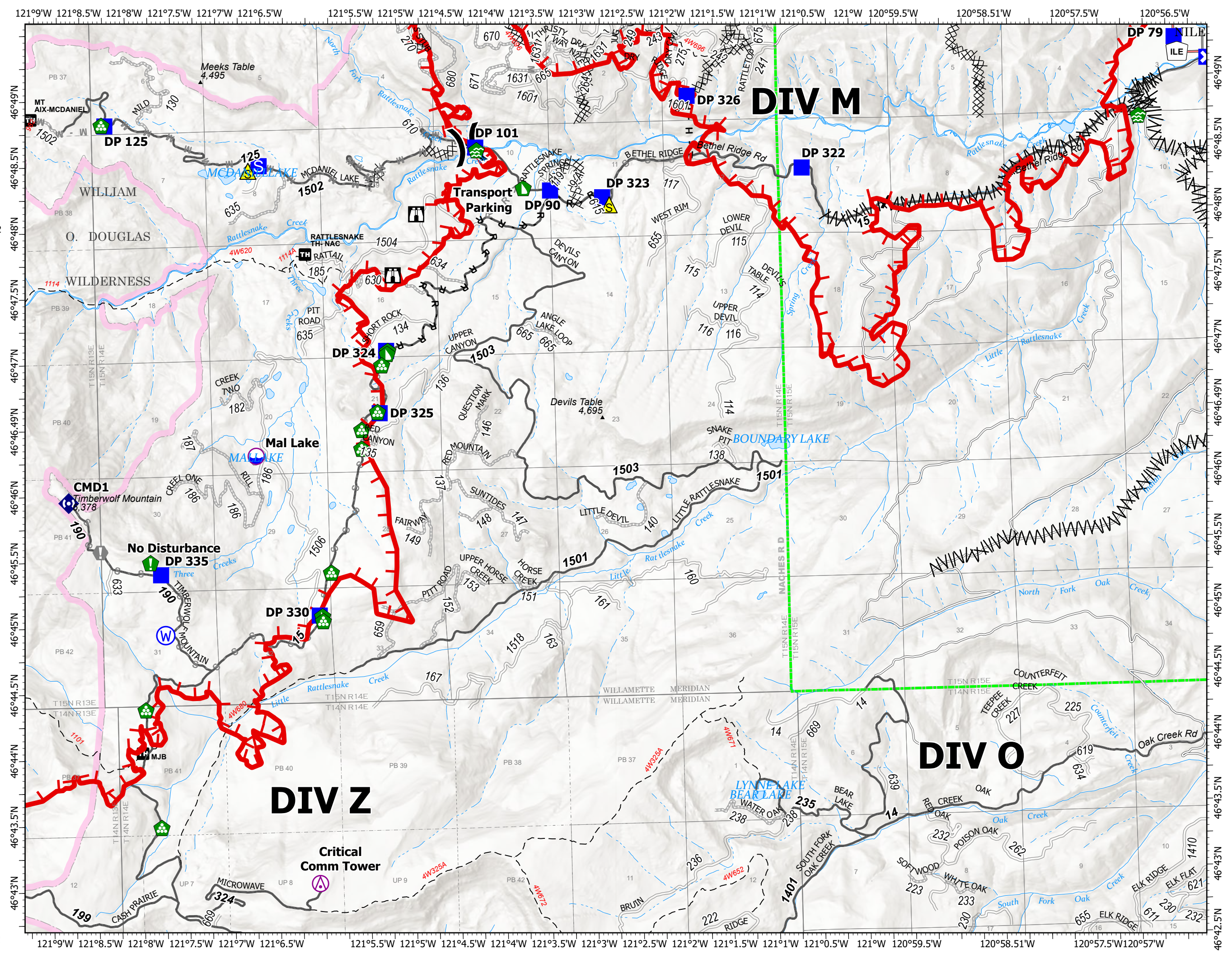
Page 5 of 10



- Aerial Hazard
- Dip Site
- Division Break
- Drop Point
- Closure
- Staging Area
- Lookout
- Value at Risk
- Water Development or Draft Site
- Resource Location
- Landing or Log Deck
- Dozer Push
- Repeater
- Safety Zone
- Water Source
- Completed Dozer Line
- Completed Fuel Break
- Completed Hand Line
- Completed Road as Line
- Planned Dozer Line
- Planned Mixed Construction Line
- Planned Road as Line
- Planned Secondary Line
- Other
- Fire Edge
- Administrative FS Boundary
- FS Wilderness Boundary



8/20/2021 1759
Acres from IR
North American 1983 Datum.
Lat/Long Grid

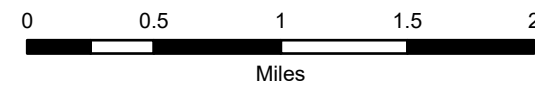


Transportation Map

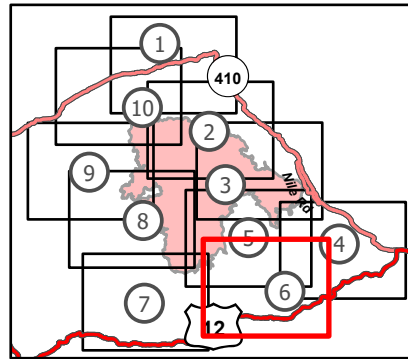
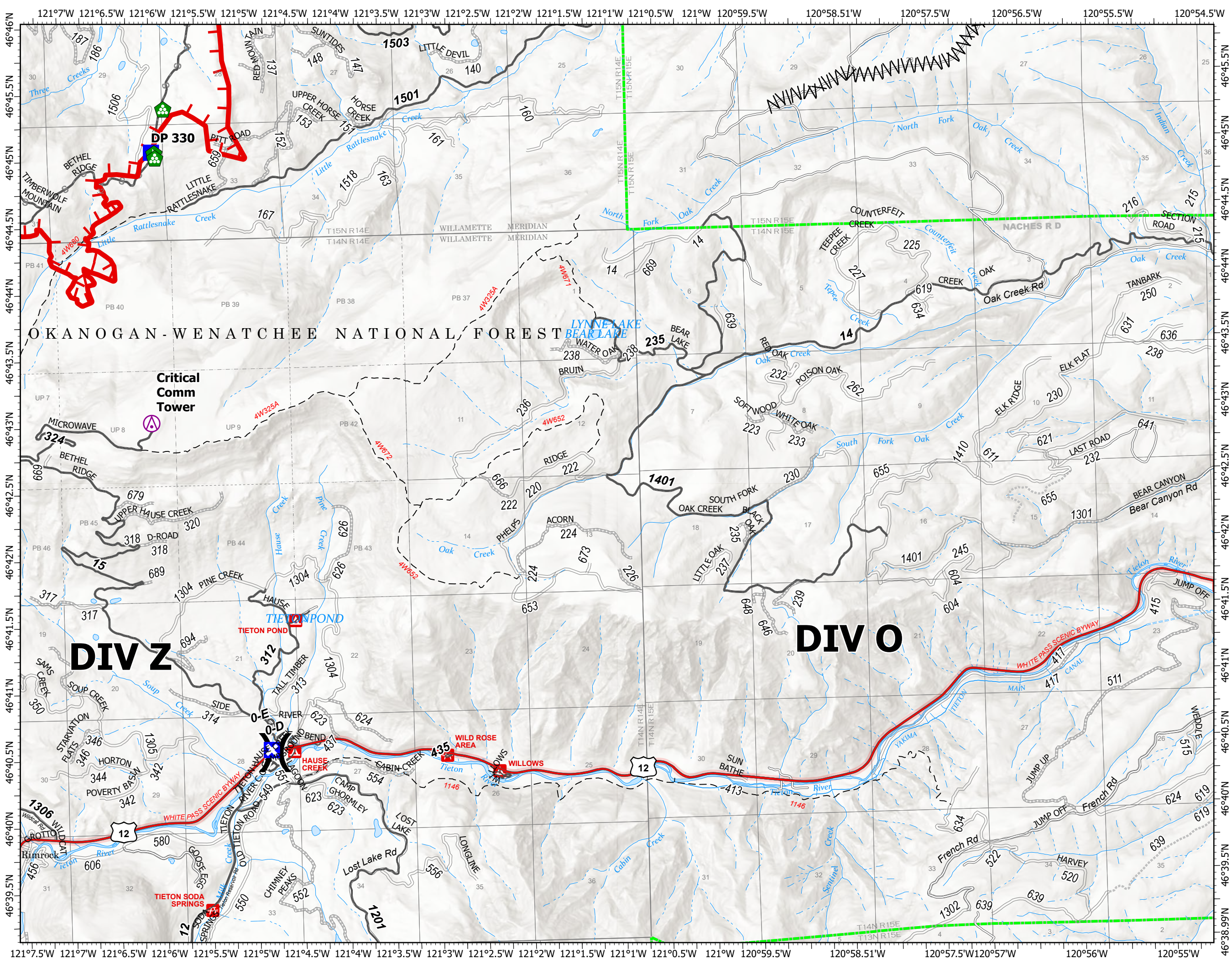
Schneider Springs
 WAOWF-000453
 8/21/2021

64,484 acres at 8/19/2021 1630

Page 6 of 10



- Aerial Hazard
- Division Break
- Drop Point
- Closure
- Landing or Log Deck
- Dozer Push
- Completed Fuel Break
- Planned Secondary Line
- Fire Edge
- Administrative FS Boundary



8/20/2021 1800
 Acres from IR
 North American 1983 Datum.
 Lat/Long Grid

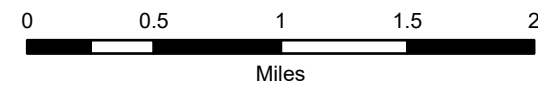


Transportation Map

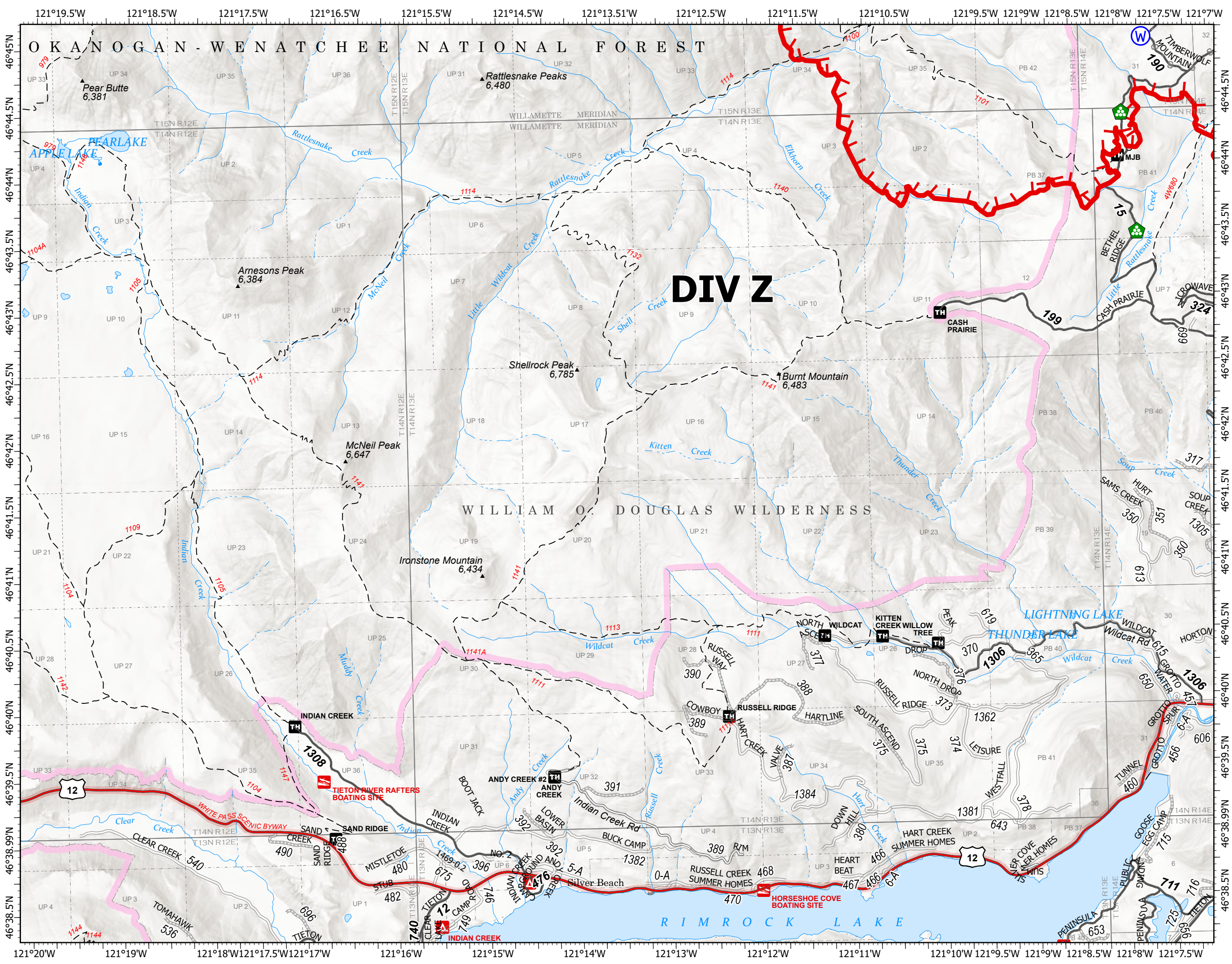
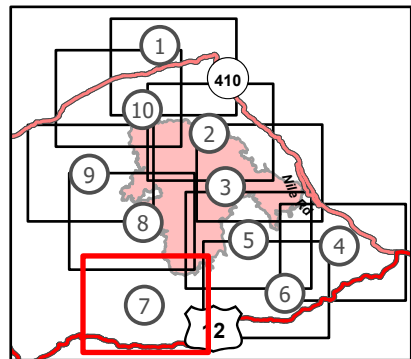
Schneider Springs
 WAOWF-000453
 8/21/2021

64,484 acres at 8/19/2021 1630

Page 7 of 10



- Landing or Log Deck
- Water Source
- Planned Secondary Line
- Other
- Fire Edge
- Administrative FS Boundary
- FS Wilderness Boundary

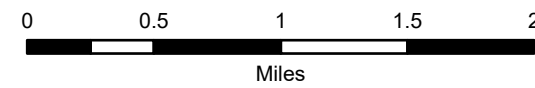


Transportation Map

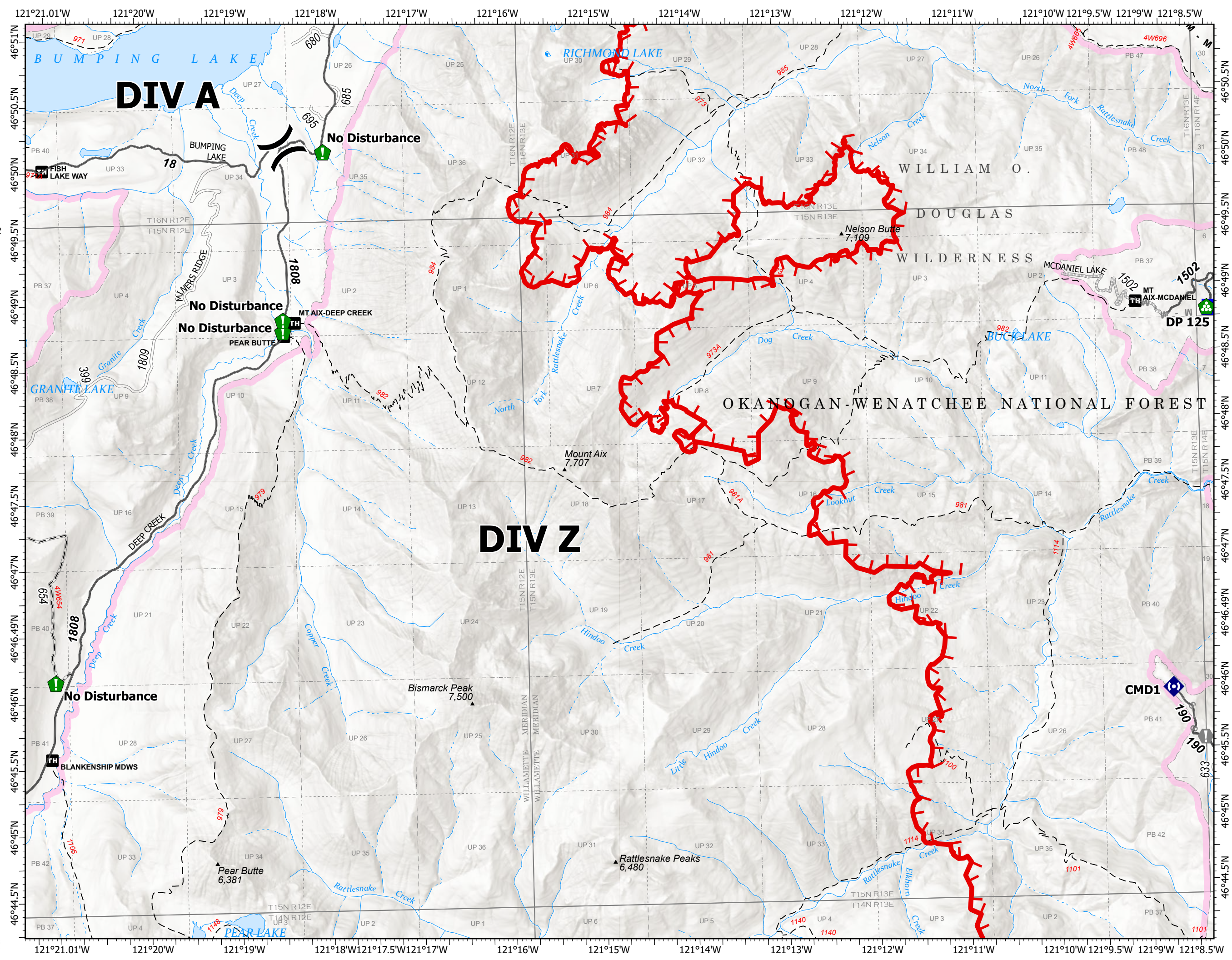
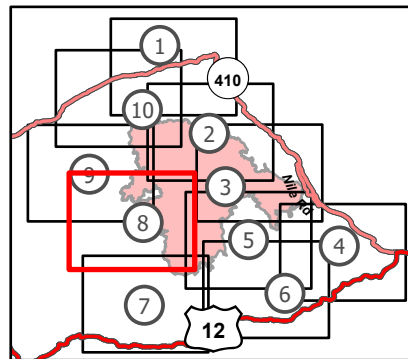
Schneider Springs
WAOWF-000453
8/21/2021

64,484 acres at 8/19/2021 1630

Page 8 of 10



- (X) Division Break
- Drop Point
- ⚠ Value at Risk
- 📍 Resource Location
- 🏠 Landing or Log Deck
- 📡 Repeater
- ⌘ Completed Dozer Line
- M - Completed Mixed Construction Line
- R - Completed Road as Line
- M - Planned Mixed Construction Line
- S - Planned Secondary Line
- 🔴 Fire Edge
- 🟩 Administrative FS Boundary
- 🟪 FS Wilderness Boundary



8/20/2021 1800
Acres from IR
North American 1983 Datum.
Lat/Long Grid

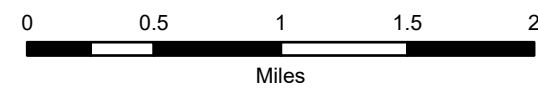


Transportation Map

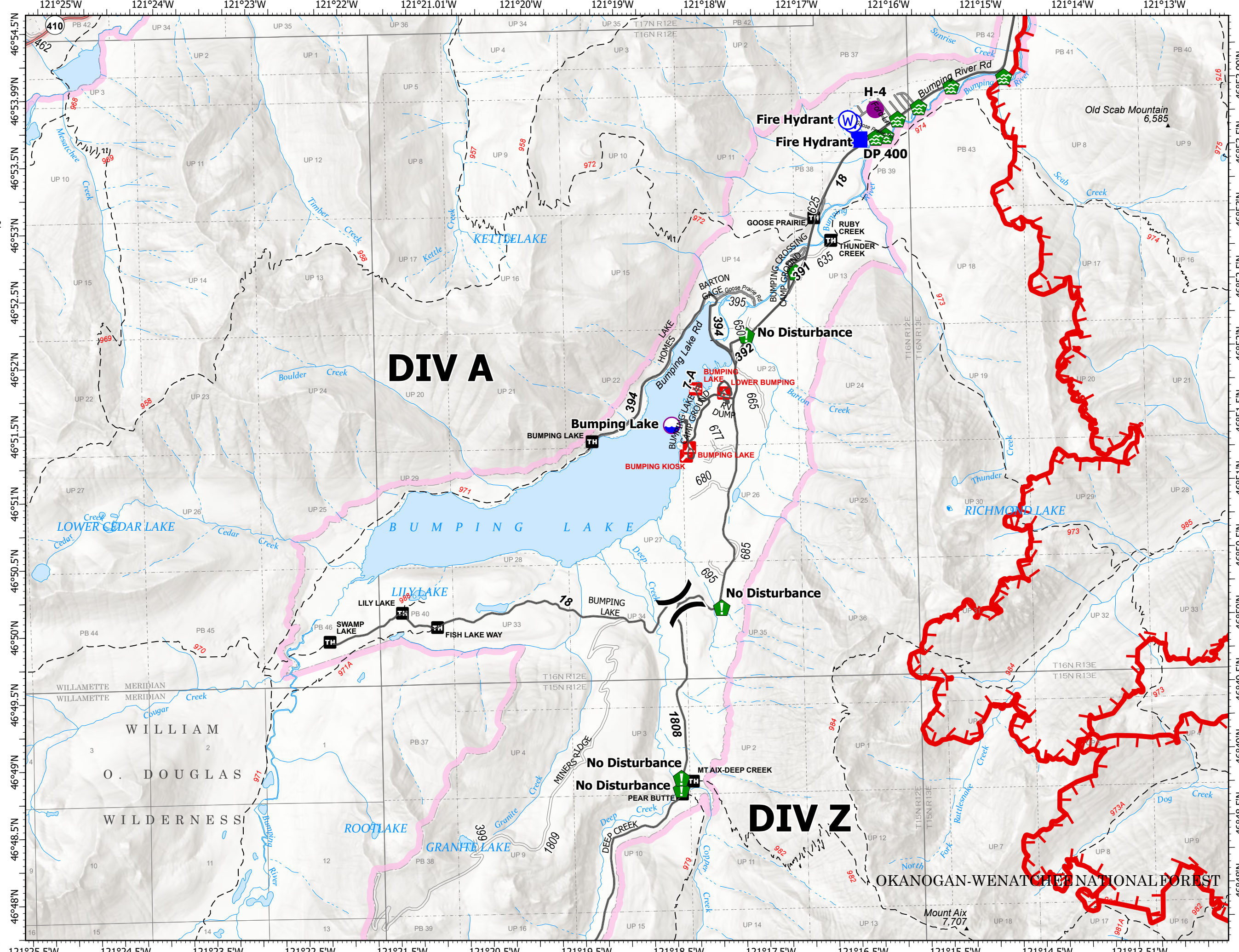
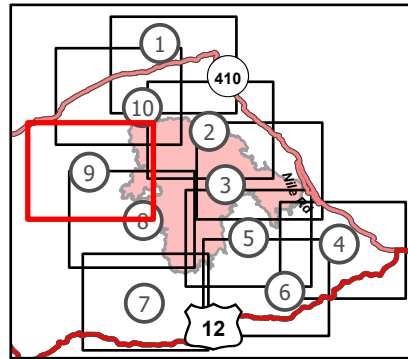
Schneider Springs
 WAOWF-000453
 8/21/2021

64,484 acres at 8/19/2021 1630

Page 9 of 10



- Dip Site
- Helispot
- Division Break
- Drop Point
- Water Development or Draft Site
- Resource Location
- Landing or Log Deck
- Water Source
- Fire Edge
- Administrative FS Boundary
- FS Wilderness Boundary

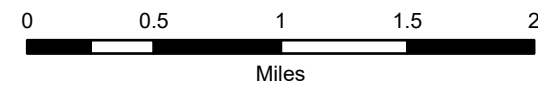


Transportation Map

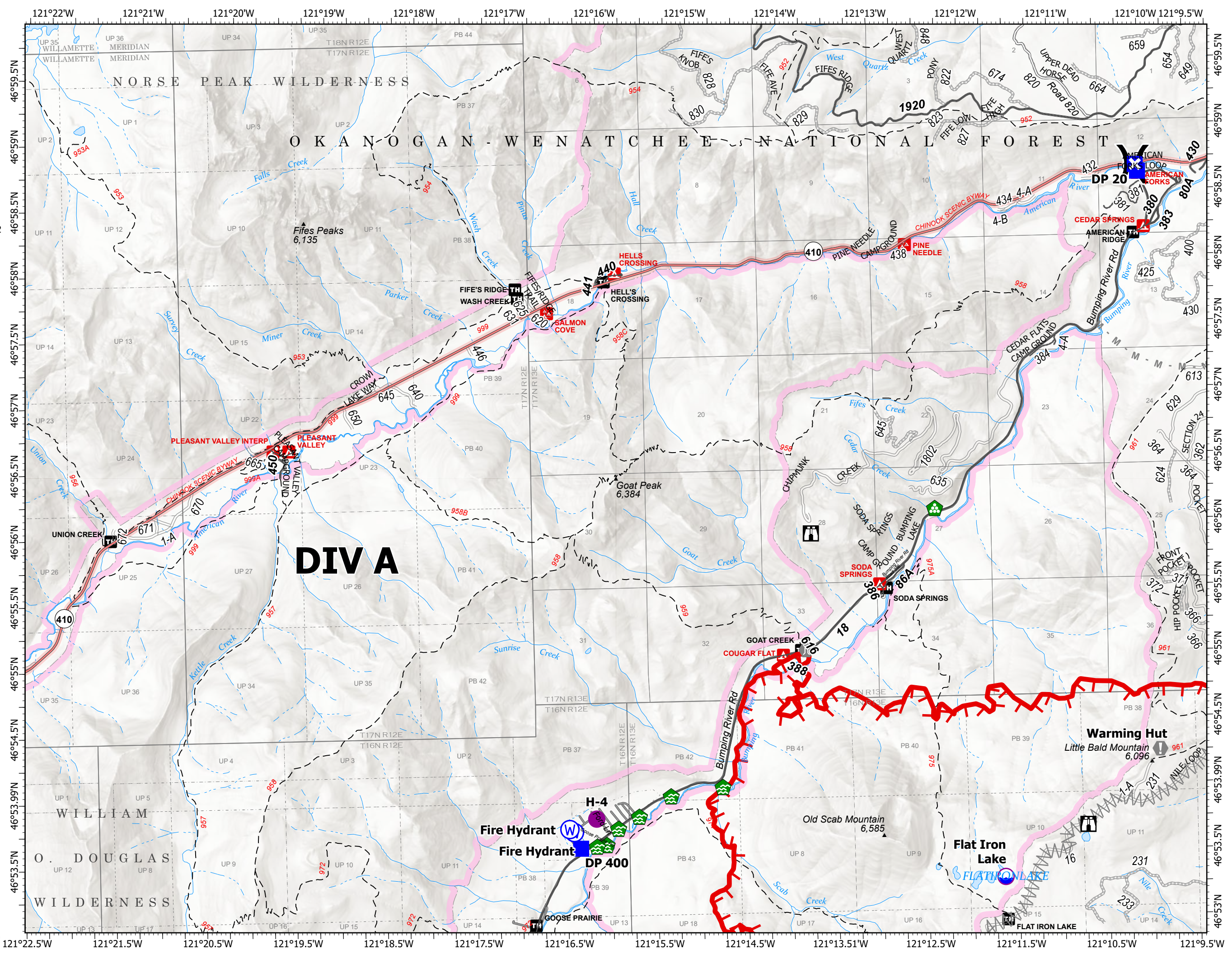
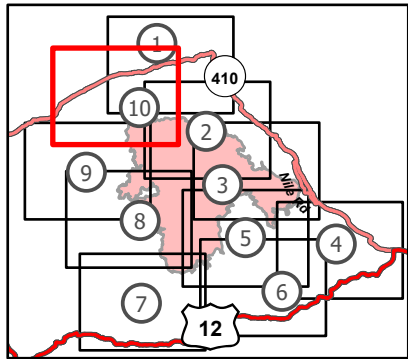
Schneider Springs
 WAOWF-000453
 8/21/2021

64,484 acres at 8/19/2021 1630

Page 10 of 10



- Dip Site
- Helispot
- Division Break
- Drop Point
- Closure
- Lookout
- Value at Risk
- Bridge
- Water Development or Draft Site
- Landing or Log Deck
- Water Source
- Planned Fuel Break
- Planned Mixed Construction Line
- Fire Edge
- Administrative FS Boundary
- FS Wilderness Boundary



8/20/2021 1800
 Acres from IR
 North American 1983 Datum.
 Lat/Long Grid

