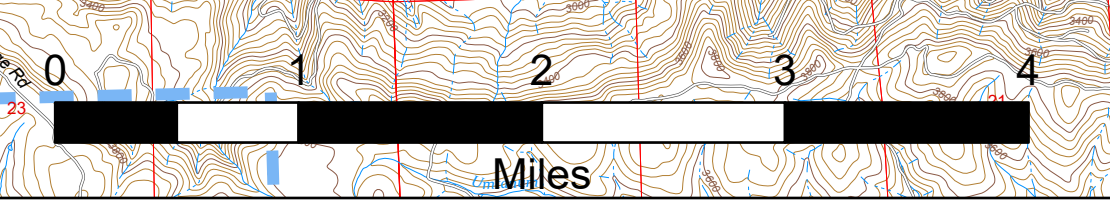


# Operations Map

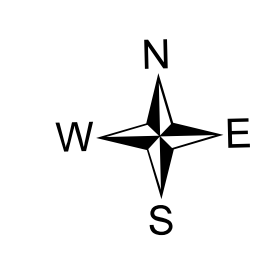
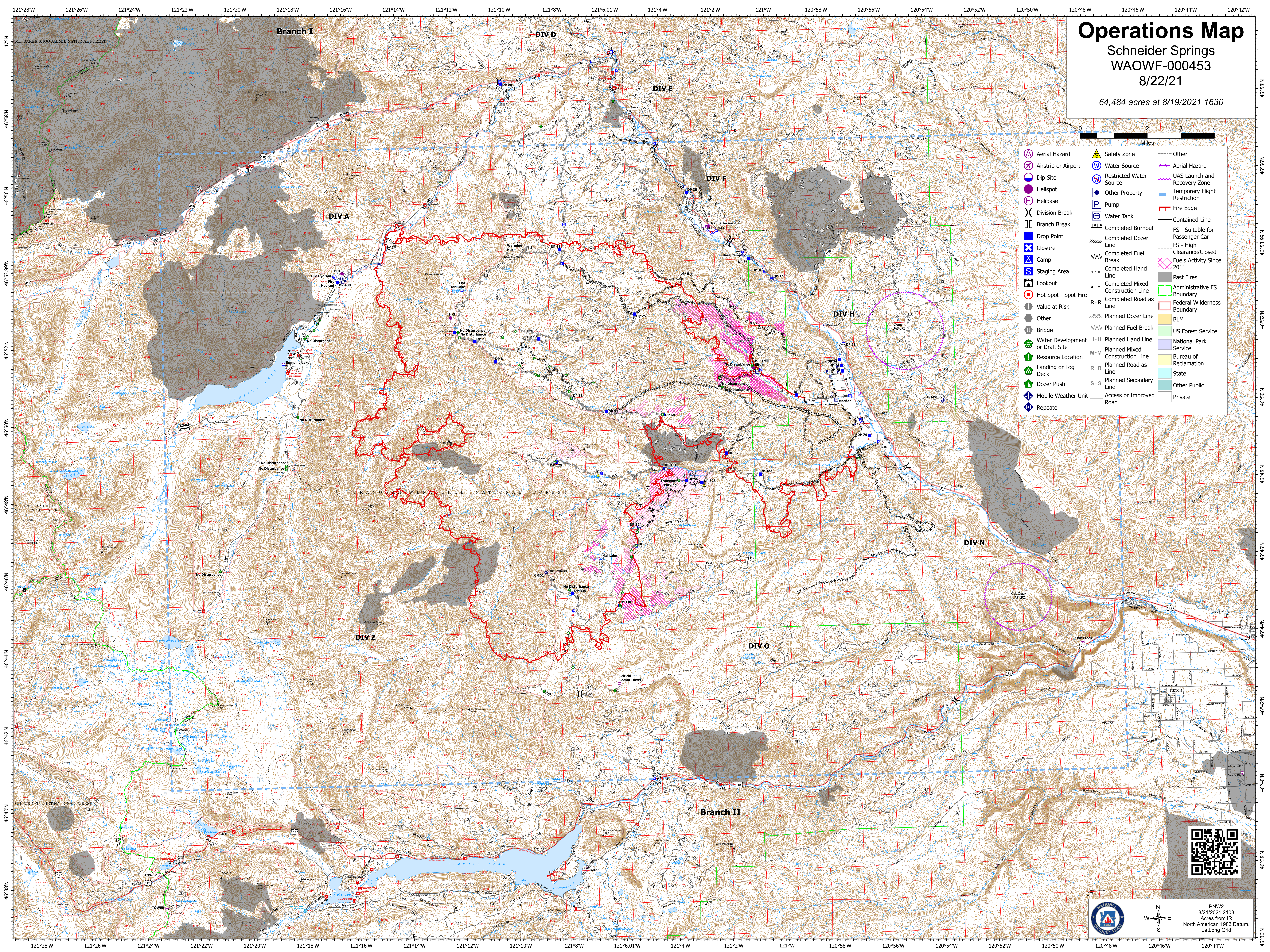
Schneider Springs  
WAOWF-000453

8/22/21

64,484 acres at 8/19/2021 1630



	Aerial Hazard		Safety Zone		Other
	Airstrip or Airport		Water Source		Aerial Hazard
	Dip Site		Restricted Water Source		UAS Launch and Recovery Zone
	Helispot		Other Property		Temporary Flight Restriction
	Helibase		Pump		Fire Edge Line
	Division Break		Water Tank		Contained Line
	Branch Break		Completed Burnout		FS - Suitable for Passenger Car
	Drop Point		Completed Dozer Line		FS - High Clearance/Closed
	Closure		Completed Fuel Break		Fuels Activity Since 2011
	Camp		Completed Hand Line		Past Fires
	Staging Area		Completed Mixed Construction Line		Administrative FS Boundary
	Lookout		Completed Road as Line		Federal Wilderness Boundary
	Hot Spot - Spot Fire		Planned Dozer Line		BLM
	Value at Risk		Planned Fuel Break		US Forest Service
	Other		Planned Hand Line		National Park Service
	Bridge		Planned Mixed Construction Line		Bureau of Reclamation
	Water Development or Draft Site		Planned Road as Line		State
	Resource Location		Planned Secondary Line		Other Public
	Landing or Log Deck		Access or Improved Road		Private
	Dozer Push				
	Mobile Weather Unit				
	Repeater				



PNW2  
8/21/2021 2108  
Acres from IR  
North American 1983 Datum,  
Lat/Long Grid