

121°2'W 121°0'W 120°58'W 120°56'W

DIV H

Ops Map

Schneider Springs
WAOWF-000453
8/22/21

64,484 acres at 8/19/2021 1630

46°54'N

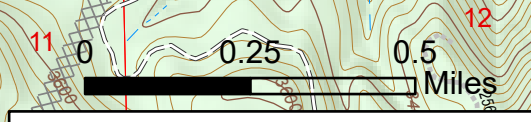
46°54'N

46°52'N

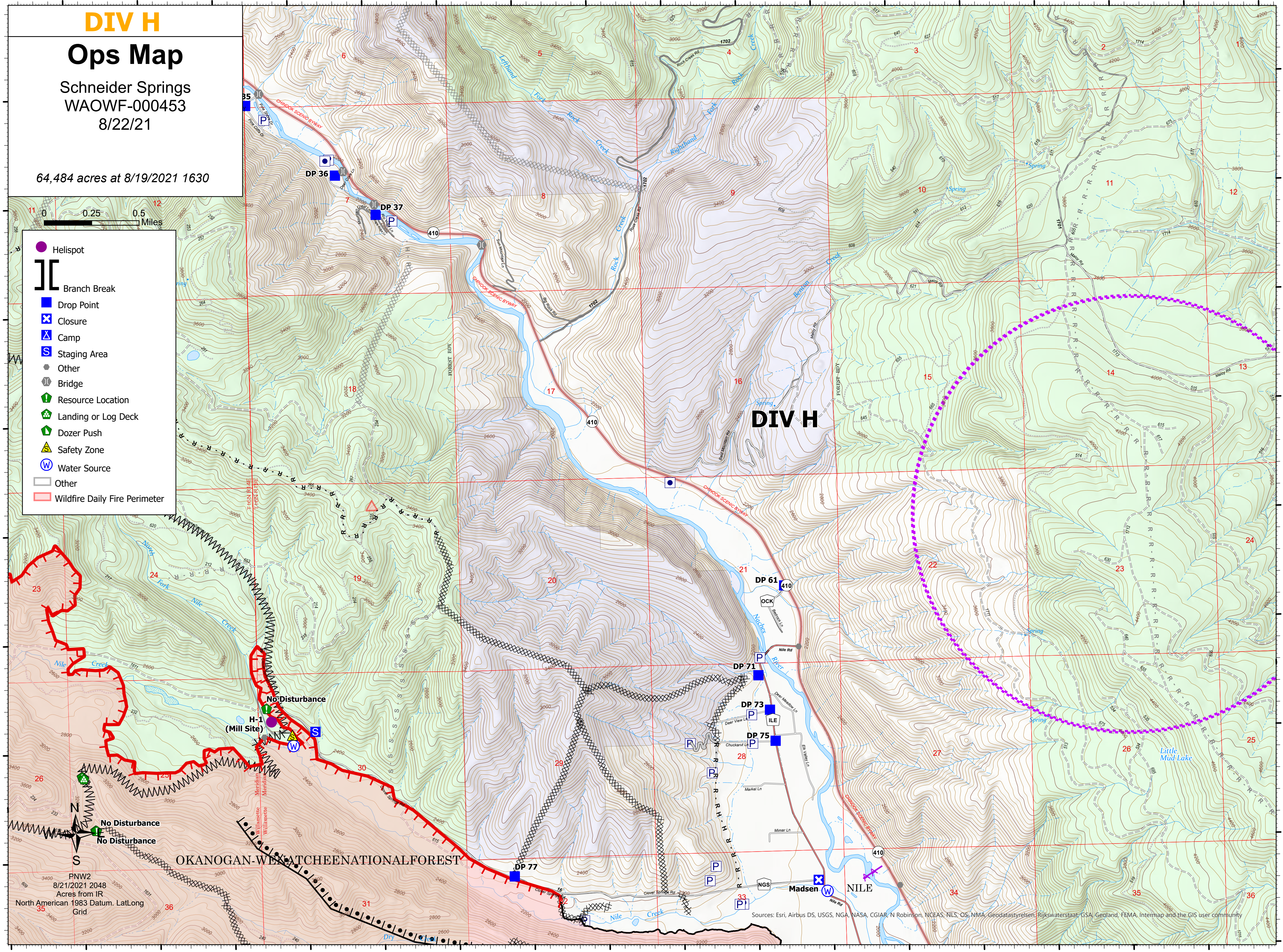
46°52'N

46°50'N

46°50'N



- Helispot
- Branch Break
- Drop Point
- Closure
- Camp
- Staging Area
- Other
- Bridge
- ! Resource Location
- Landing or Log Deck
- Dozer Push
- Safety Zone
- Water Source
- Other
- Wildfire Daily Fire Perimeter



DIV H

OKANOGAN-WENATCHEENATIONALFOREST

PNW2
8/21/2021 2048
Acres from IR
North American 1983 Datum, LatLong
Grid

Sources: Esri, Airbus DS, USGS, NGA, NASA, CGIAR, N Robinson, NCEAS, NLS, OS, NMA, Geodatastyrelsen, Rijkswaterstaat, GSA, Geoland, FEMA, Intermap and the GIS user community