

Security Map

Schneider Springs
WAOWF-000453
8/22/21 Day

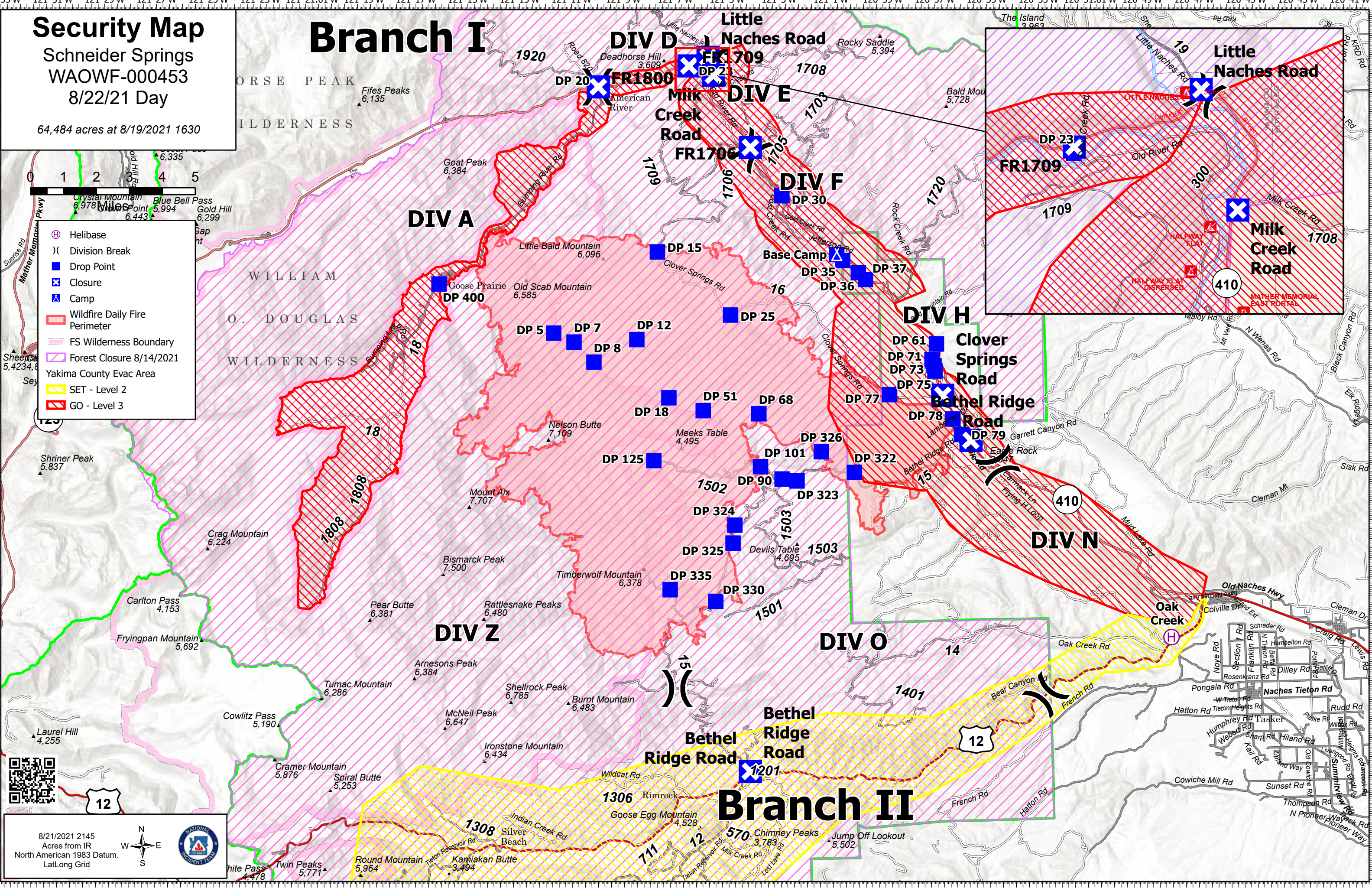
64,484 acres at 8/19/2021 1630



- ⊕ Helibase
-) Division Break
- Drop Point
- ⊗ Closure
- ⚡ Camp
- ▭ Wildfire Daily Fire Perimeter
- ▭ FS Wilderness Boundary
- ▭ Forest Closure 8/14/2021
- ▭ Yakima County Evac Area
- ▭ SET - Level 2
- ▭ GO - Level 3

Branch I

Branch II



8/21/2021 2145
Acres from IR
North American 1983 Datum.
Lat/Long Grid

