

Structure Protection Map

Schneider Springs
WAOWF-000453
8/24/21

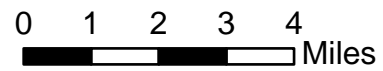
68,193 acres at 8/24/21



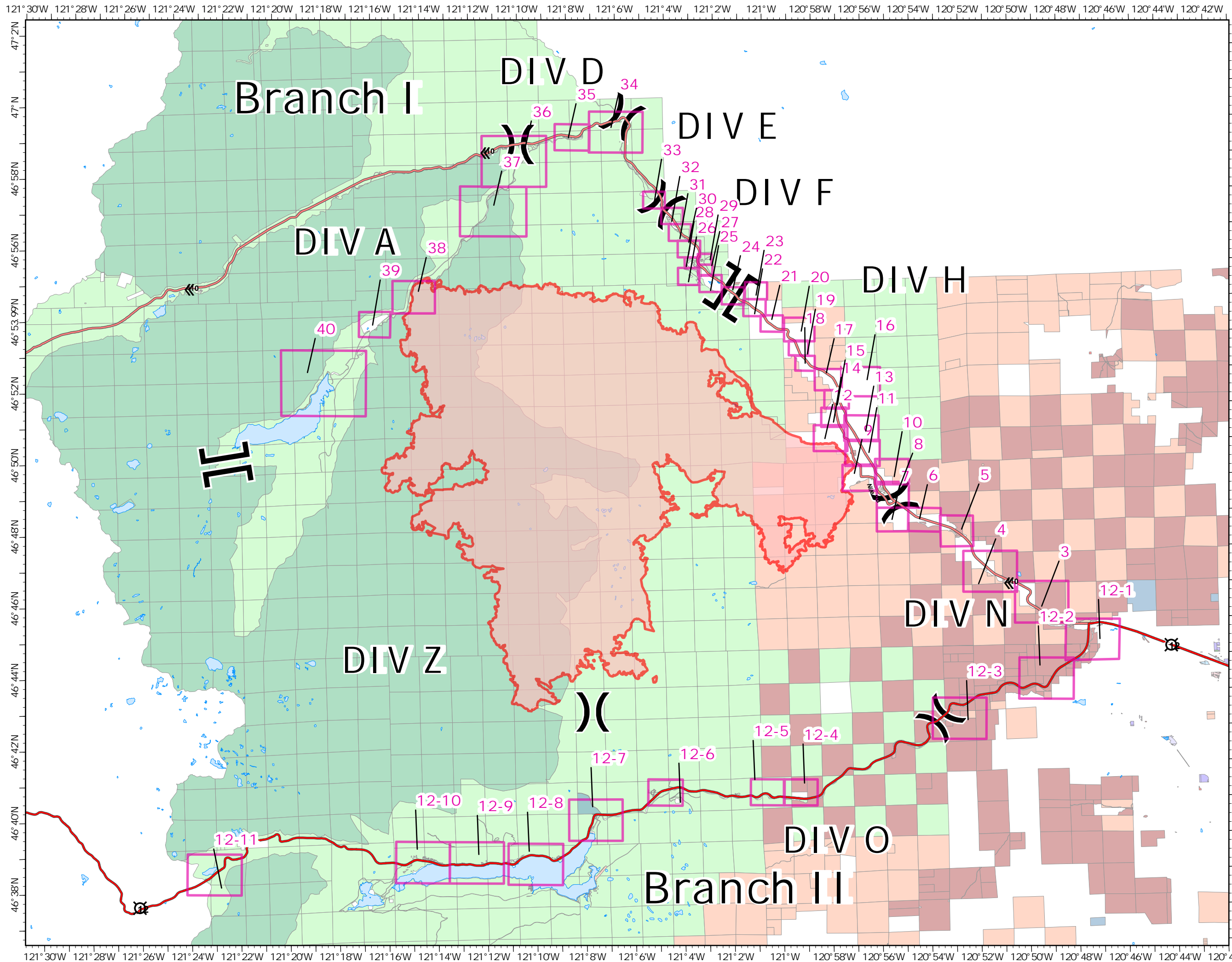
- Mapbook Index for map
- Wildfire Daily Fire Perimeter
- Primary Highway
- Secondary Highway

Assignment Breaks

- Division Break
- Branch Break
- Lake / Pond
- Lake / Pond (Intermittent)
- Reservoir
- US Bureau of Land Mgmt
- US Bureau of Reclamation
- USDA Forest Service: National Forest
- USDA Forest Sservice: Wilderness Area
- Yakama Nation
- WA State Dept of Agriculture
- WA State Dept of Fish and Wildlife
- WA State Dept of Natural Resources
- WA State Dept of Transportation
- WA State Parks and Rec Commission
- Yakima County
- Local Government
- Fire Districts
- School Districts/Educational
- Other Federal Agencies



PNW2
8/23/2021 2206
North American 1983 Datum.
LatLong Grid



Structure Protection Map

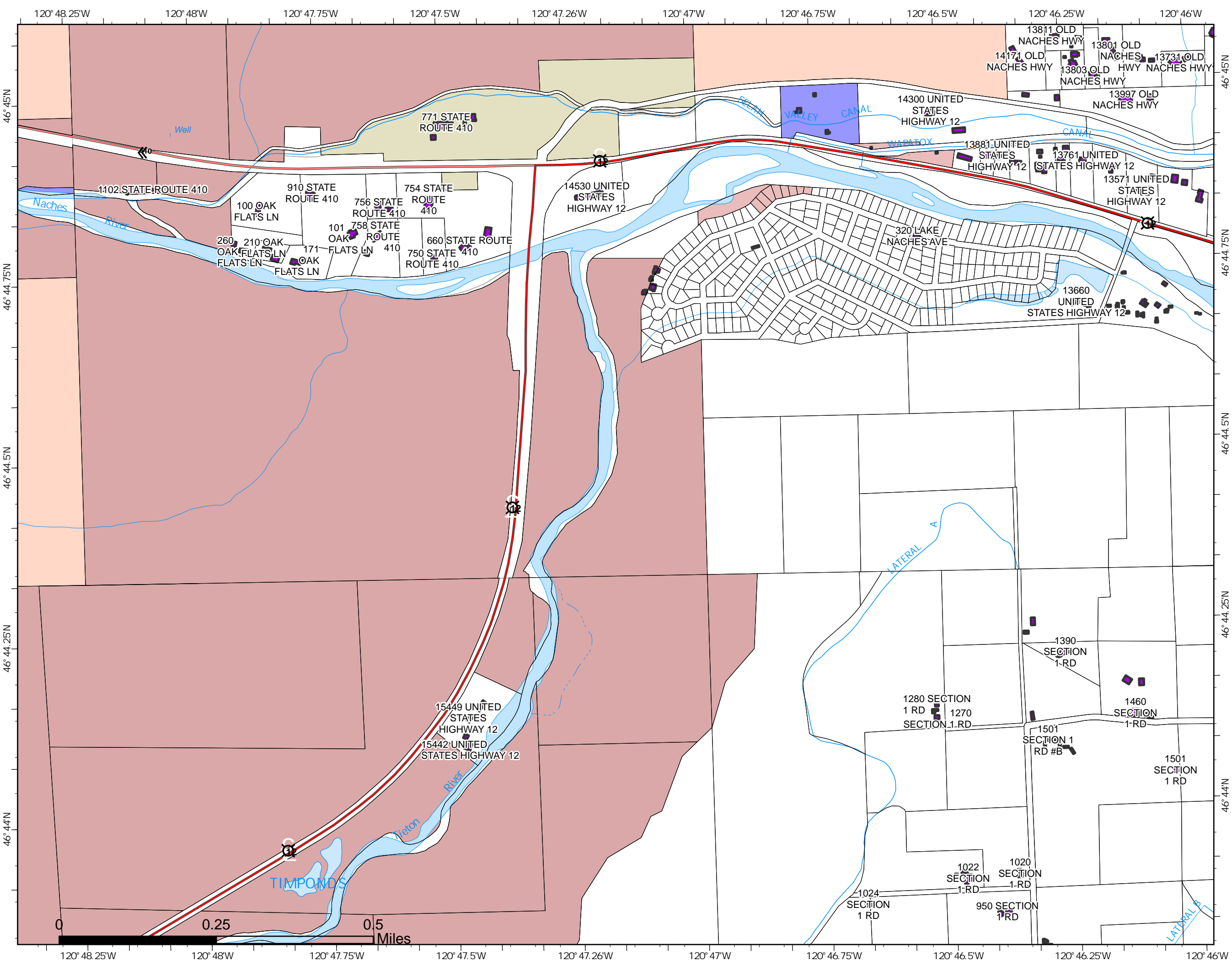
Schneider Springs
WAOWF-000453
8/24/21 Day

68,193 acres at 8/22/2021
1610



Page: 12.1

- Taxlots
 - Building Outlines
 - Primary Highway
 - Secondary Highway
 - Lake / Pond
 - Gaging Station
 - Well
 - Stream / River
 - Stream/River; Artificial Path
 - Canal / Ditch
 - Pipeline
 - Stream/River Intermittent
- FCode
- Lake / Pond
 - US Bureau of Reclamation
 - WA State Dept of Fish and Wildlife
 - WA State Dept of Natural Resources
 - WA State Dept of Transportation
 - Irrigation Districts
 - Private



PNW2
8/23/2021 2136
Acres from IR
North American 1983 Datum.
LatLong Grid



Structure Protection Map

Schneider Springs
WAOWF-000453
8/24/21 Day

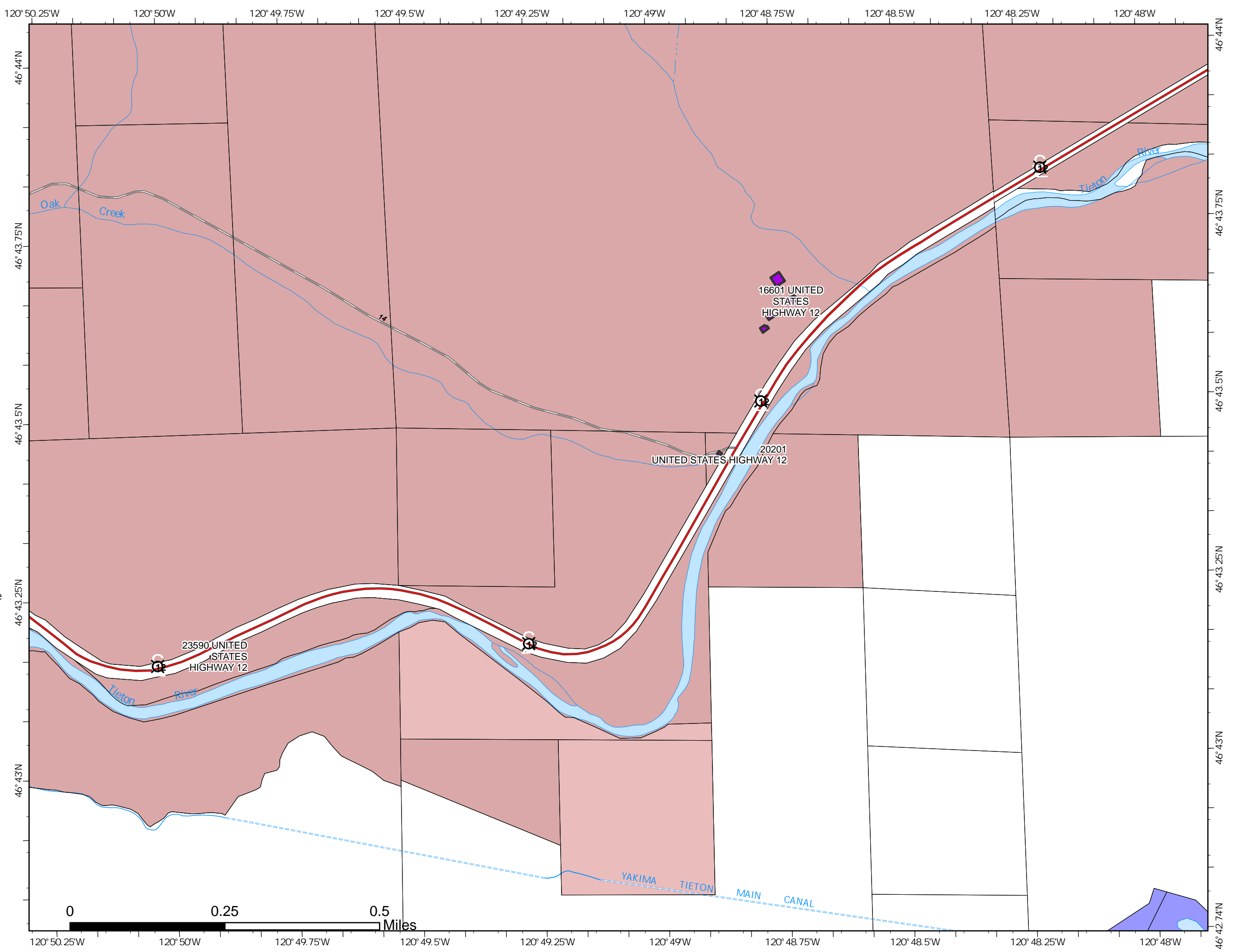
68,193 acres at 8/22/2021
1610



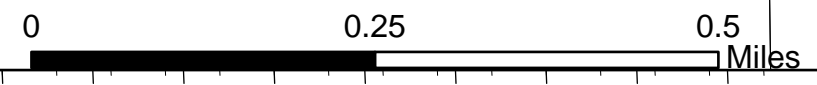
Page: 12.2

- Taxlots
- Building Outlines
- Primary Highway
- Lake / Pond
- Gravel Road
- Flume
- Tunnel
- Stream / River
- Stream/River; Artificial Path
- Canal / Ditch
- Pipeline Underground
- Stream/River Intermittent

- FCode
- Lake / Pond
 - US Bureau of Reclamation
 - WA State Dept of Fish and Wildlife
 - Irrigation Districts
 - Private



PNW2
8/23/2021 2136
Acres from IR
North American 1983 Datum.
LatLong Grid



Structure Protection Map

Schneider Springs
WAOWF-000453
8/24/21 Day

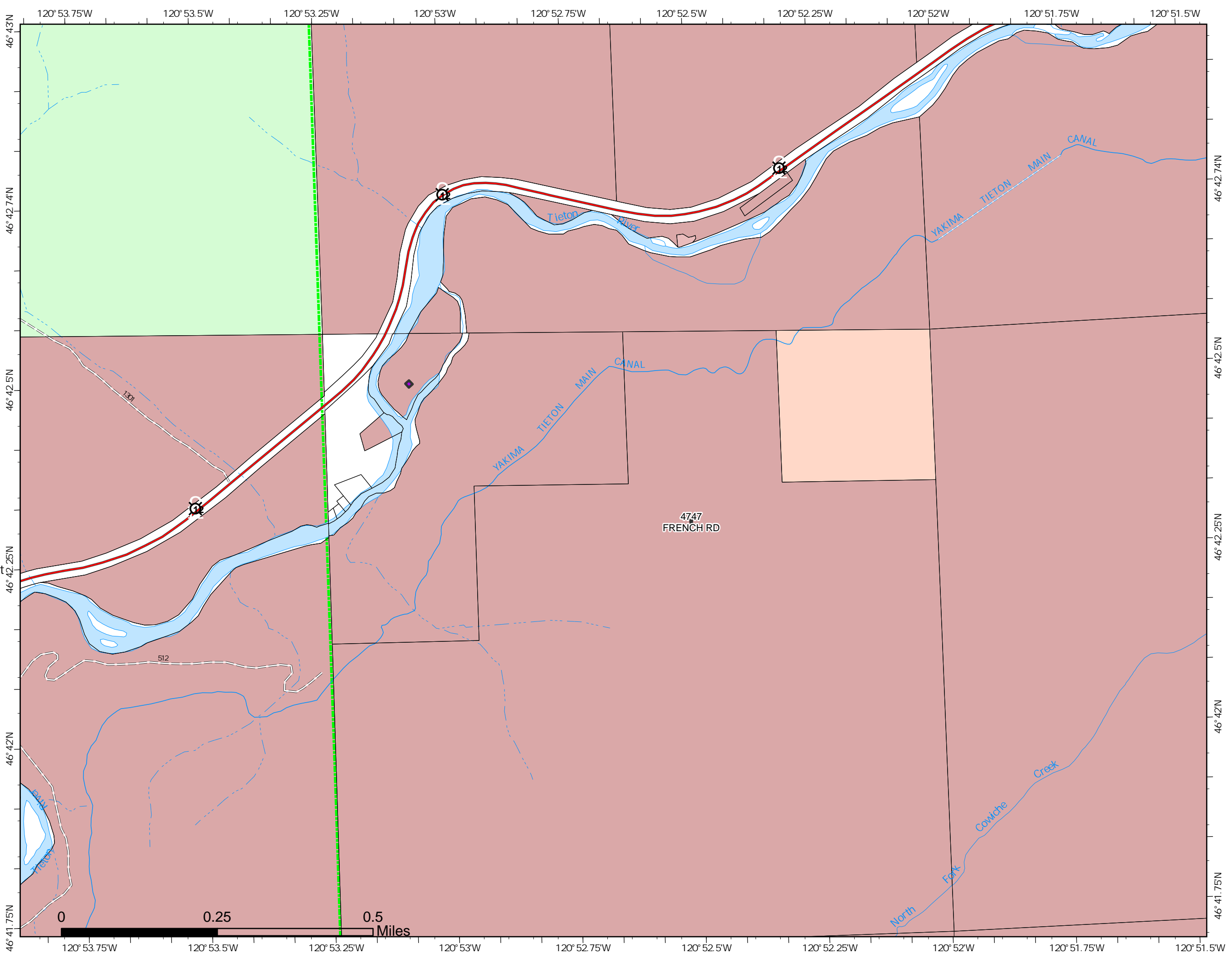
68,193 acres at 8/22/2021
1610



Page: 12.3

- Taxlots
- Building Outlines
- Primary Highway
- Unimproved Roads
- Closed Roads
- Spring/Seep
- Tunnel
- Stream / River
- Stream/River; Artificial Path
- Canal / Ditch
- Pipeline Underground
- Stream/River Intermittent
- Administrative FS Boundary
- US Bureau of Reclamation
- USDA Forest Service: National Forest
- WA State Dept of Fish and Wildlife
- WA State Dept of Natural Resources
- Private

PNW2
8/23/2021 2136
Acres from IR
North American 1983 Datum.
LatLong Grid



Structure Protection Map

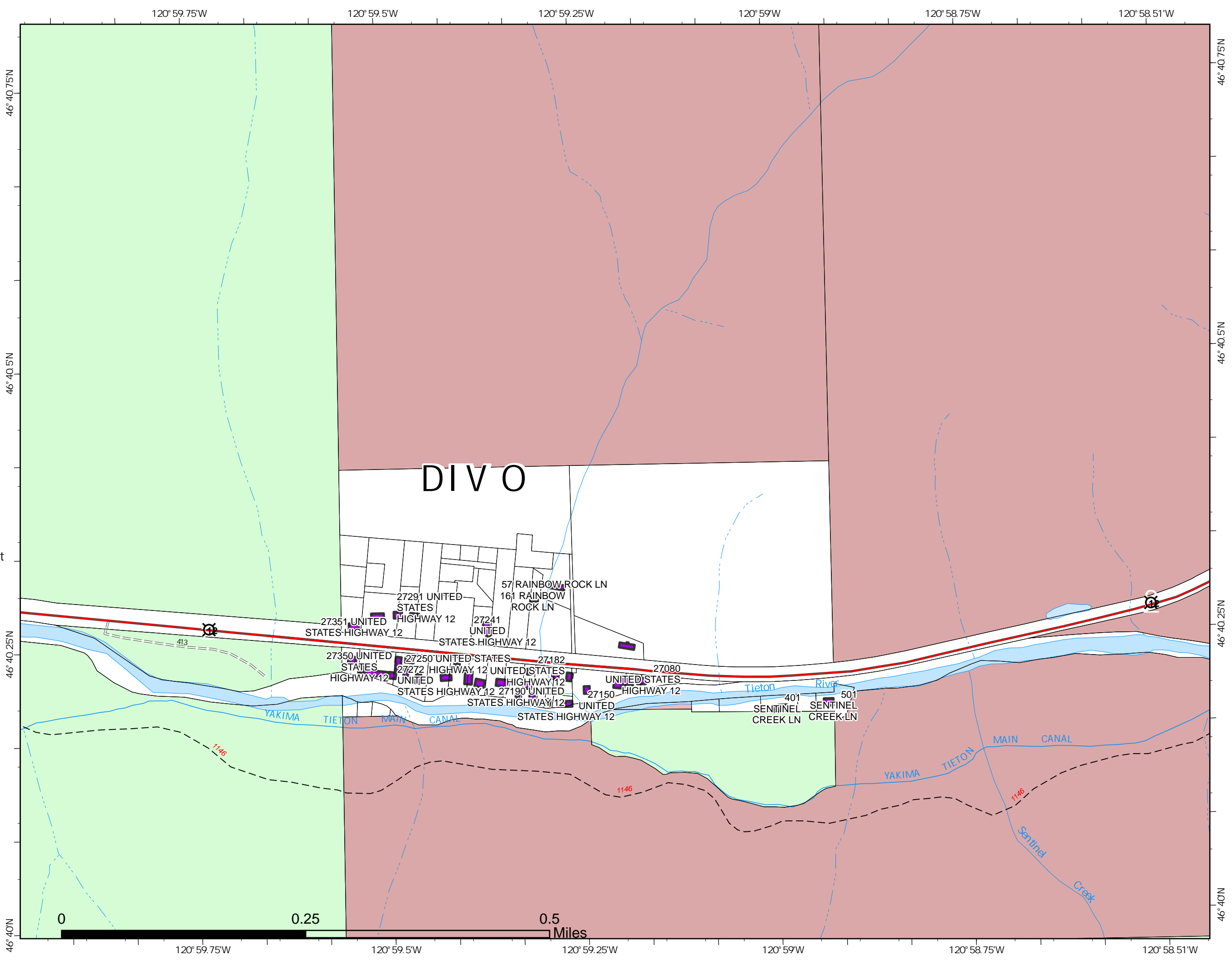
Schneider Springs
WAOWF-000453
8/24/21 Day

68,193 acres at 8/22/2021
1610



Page: 12.4

- Taxlots
 - Building Outlines
 - Primary Highway
 - Trail
 - Unimproved Roads
 - Stream / River
 - Stream/River; Artificial Path
 - Canal / Ditch
 - Stream/River Intermittent
 - Administrative FS Boundary
- FCode
- Lake / Pond
 - US Bureau of Reclamation
 - USDA Forest Service: National Forest
 - WA State Dept of Fish and Wildlife
 - Private



PNW2
8/23/2021 2136
Acres from IR
North American 1983 Datum.
LatLong Grid

Structure Protection Map

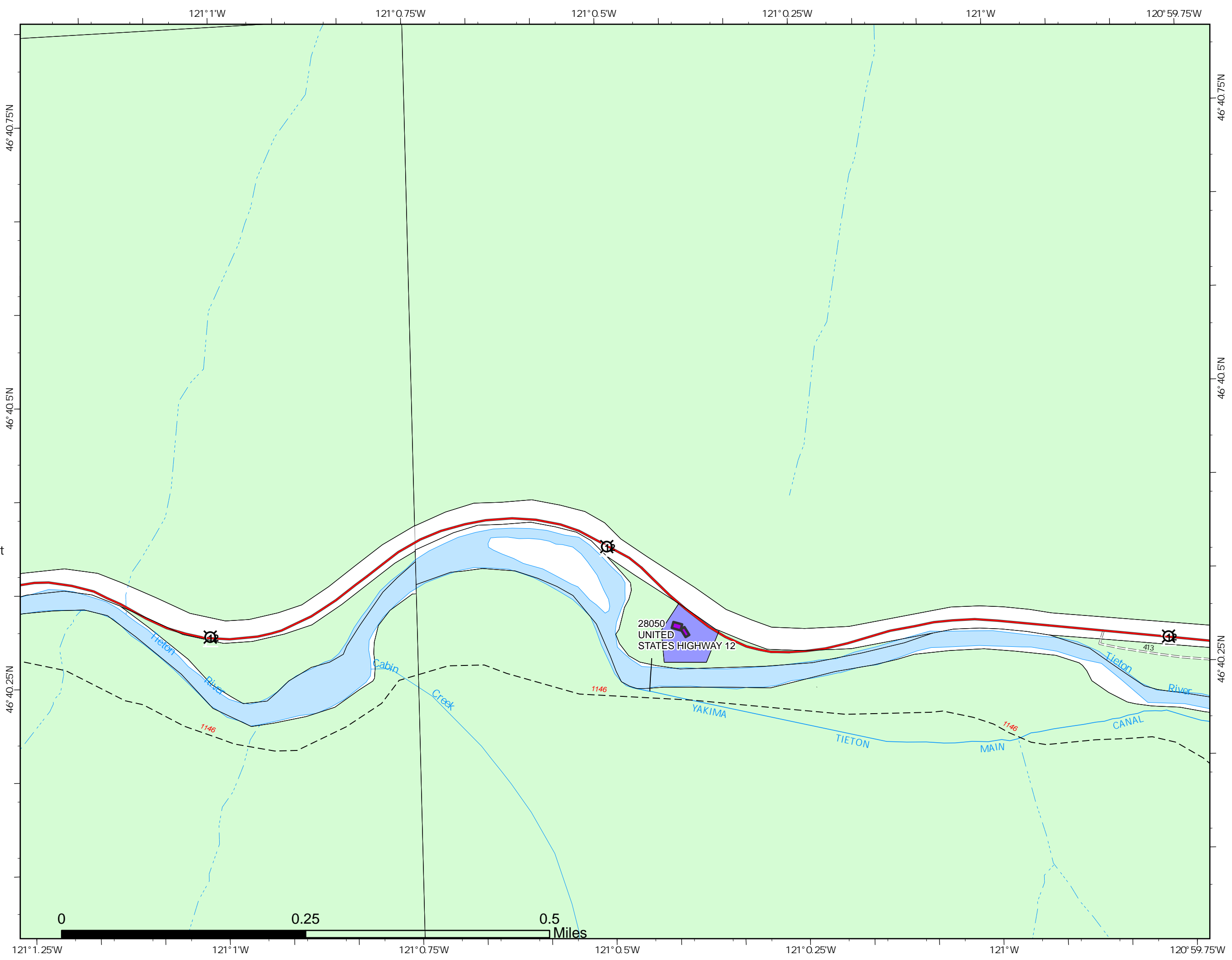
Schneider Springs
WAOWF-000453
8/24/21 Day

68,193 acres at 8/22/2021
1610



Page: 12.5

- Taxlots
- Building Outlines
- Primary Highway
- Trail
- Unimproved Roads
- Gaging Station
- Dam / Weir
- Nonearthen Shore
- Stream / River
- Stream/River; Artificial Path
- Canal / Ditch
- Stream/River Intermittent
- Administrative FS Boundary
- USDA Forest Service: National Forest
- Irrigation Districts
- Private



PNW2
8/23/2021 2136
Acres from IR
North American 1983 Datum.
LatLong Grid

Structure Protection Map

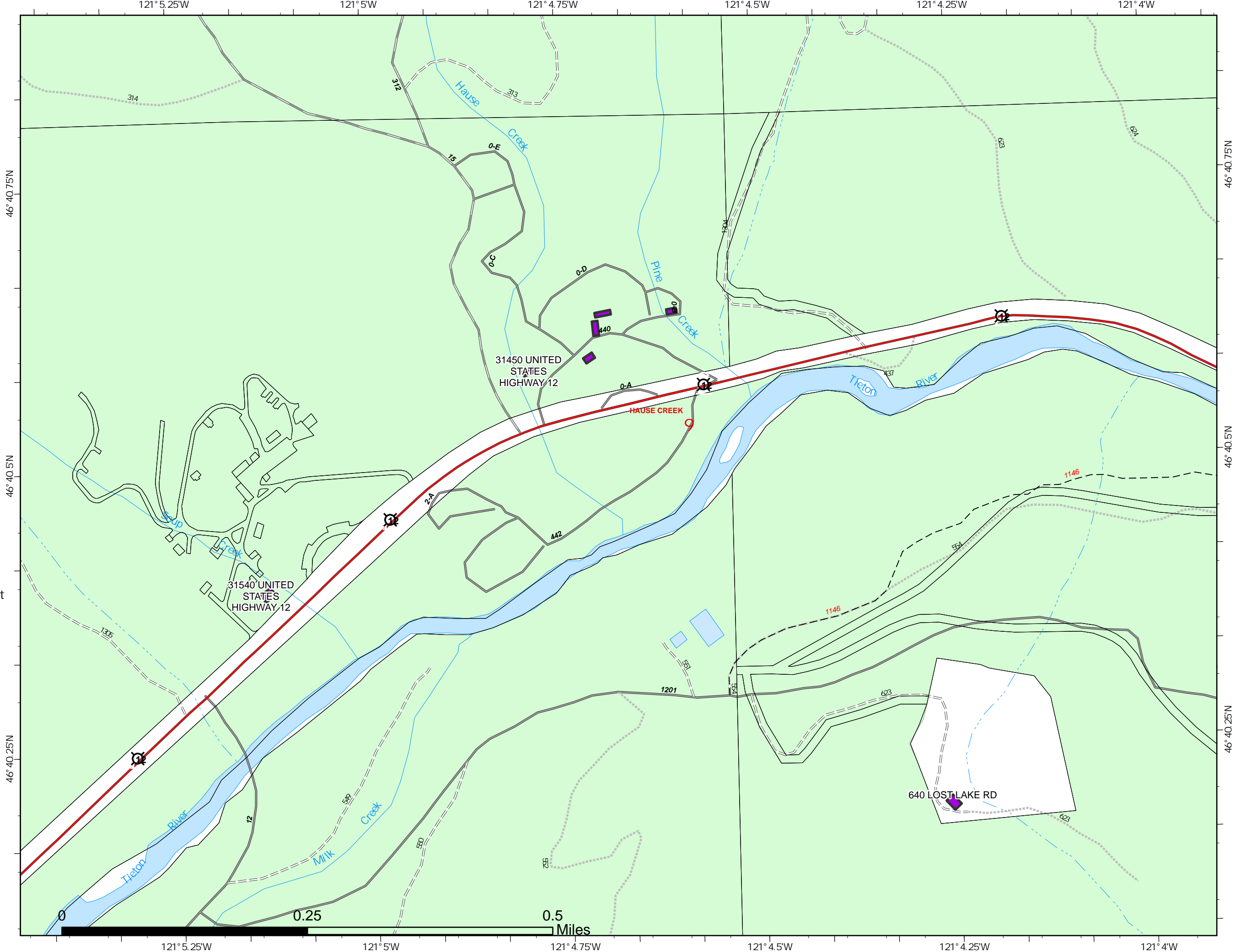
Schneider Springs
WAOWF-000453
8/24/21 Day

68,193 acres at 8/22/2021
1610



Page: 12.6

- Taxlots
- Building Outlines
- Primary Highway
- Campground
- Trail
- Paved Road
- Gravel Road
- Unimproved Roads
- Closed Roads
- Stream / River
- Stream/River; Artificial Path
- Stream/River Intermittent
- Administrative FS Boundary
- FCode
 - Lake / Pond
 - USDA Forest Service: National Forest
 - Private



PNW2
8/23/2021 2137
Acres from IR
North American 1983 Datum.
LatLong Grid



0.25 0.5 Miles

Structure Protection Map

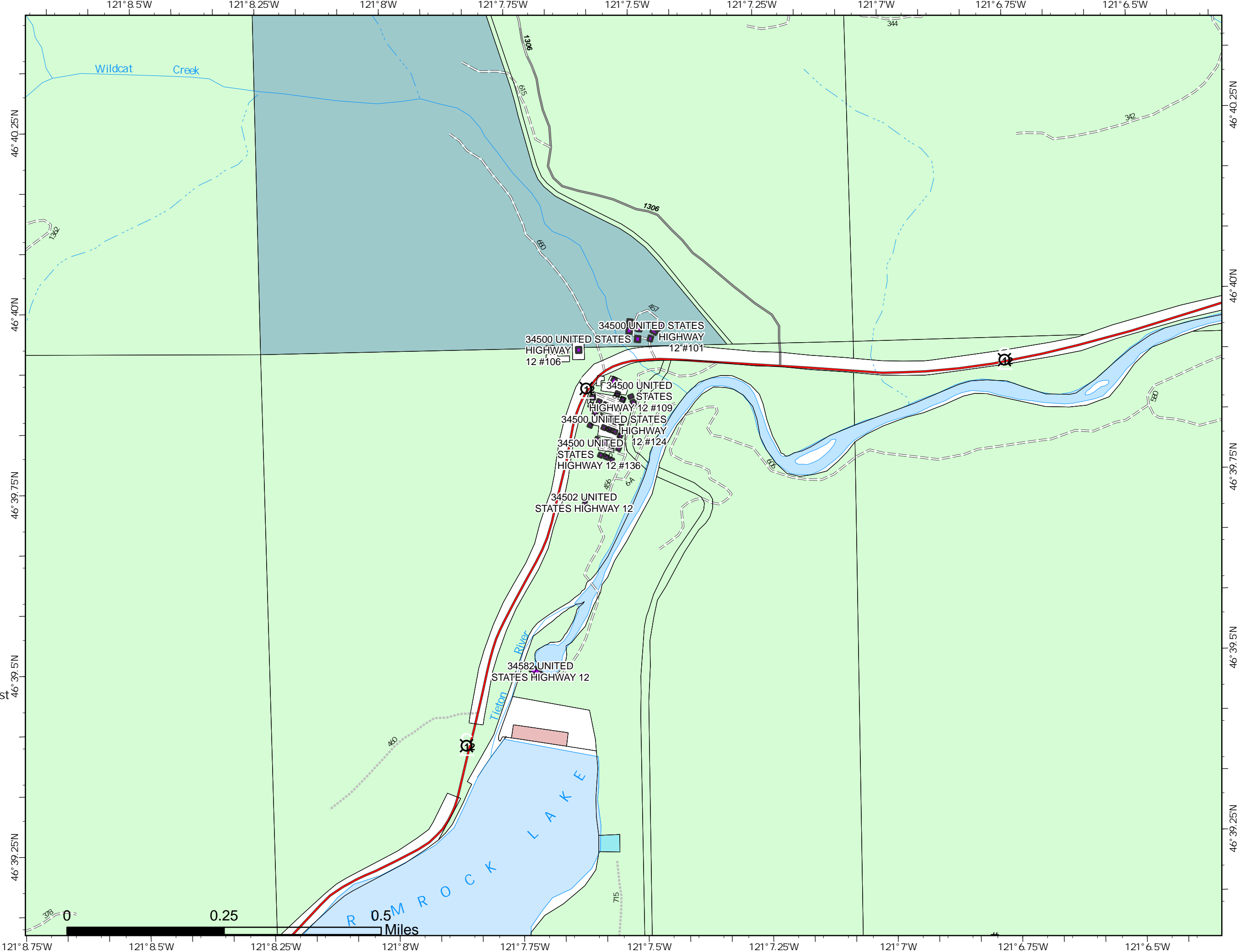
Schneider Springs
WAOWF-000453
8/24/21 Day

68,193 acres at 8/22/2021
1610

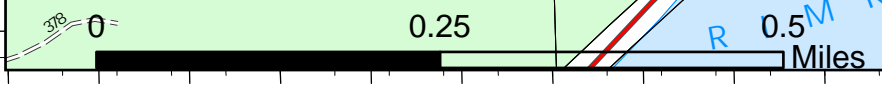


Page: 12.7

- Taxlots
 - Building Outlines
 - Primary Highway
 - Lake / Pond
 - Summit; Gap
 - GNIS Populated Places Some
 - Paved Road
 - Gravel Road
 - Unimproved Roads
 - Closed Roads
 - Gaging Station
 - Dam / Weir
 - Nonearthen Shore
 - Stream / River
 - Stream/River; Artificial Path
 - Stream/River Intermittent
 - Administrative FS Boundary
- FCode**
- Lake / Pond
 - US Bureau of Reclamation
 - USDA Forest Service: National Forest
 - WA State Dept of Agriculture
 - Other Federal Agencies
 - Private



PNW2
8/23/2021 2137
Acres from IR
North American 1983 Datum.
LatLong Grid




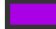

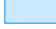

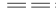




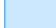


Structure Protection Map

Schneider Springs
WAOWF-000453
8/24/21 Day

68,193 acres at 8/22/2021
1610



Page: 12.8

-  Taxlots
 -  Building Outlines
 -  Primary Highway
 -  Lake / Pond
 -  Boating Site
 -  Unimproved Roads
 -  Bay/Inlet
 -  Stream/River; Artificial Path
 -  Stream/River Intermittent
 -  Administrative FS Boundary
- FCode**
-  Lake / Pond
 -  USDA Forest Service: National Forest
 -  Private



PNW2
8/23/2021 2137
Acres from IR
North American 1983 Datum.
LatLong Grid






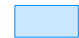

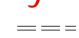




Structure Protection Map

Schneider Springs
WAOWF-000453
8/24/21 Day

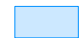
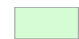

68,193 acres at 8/22/2021
1610

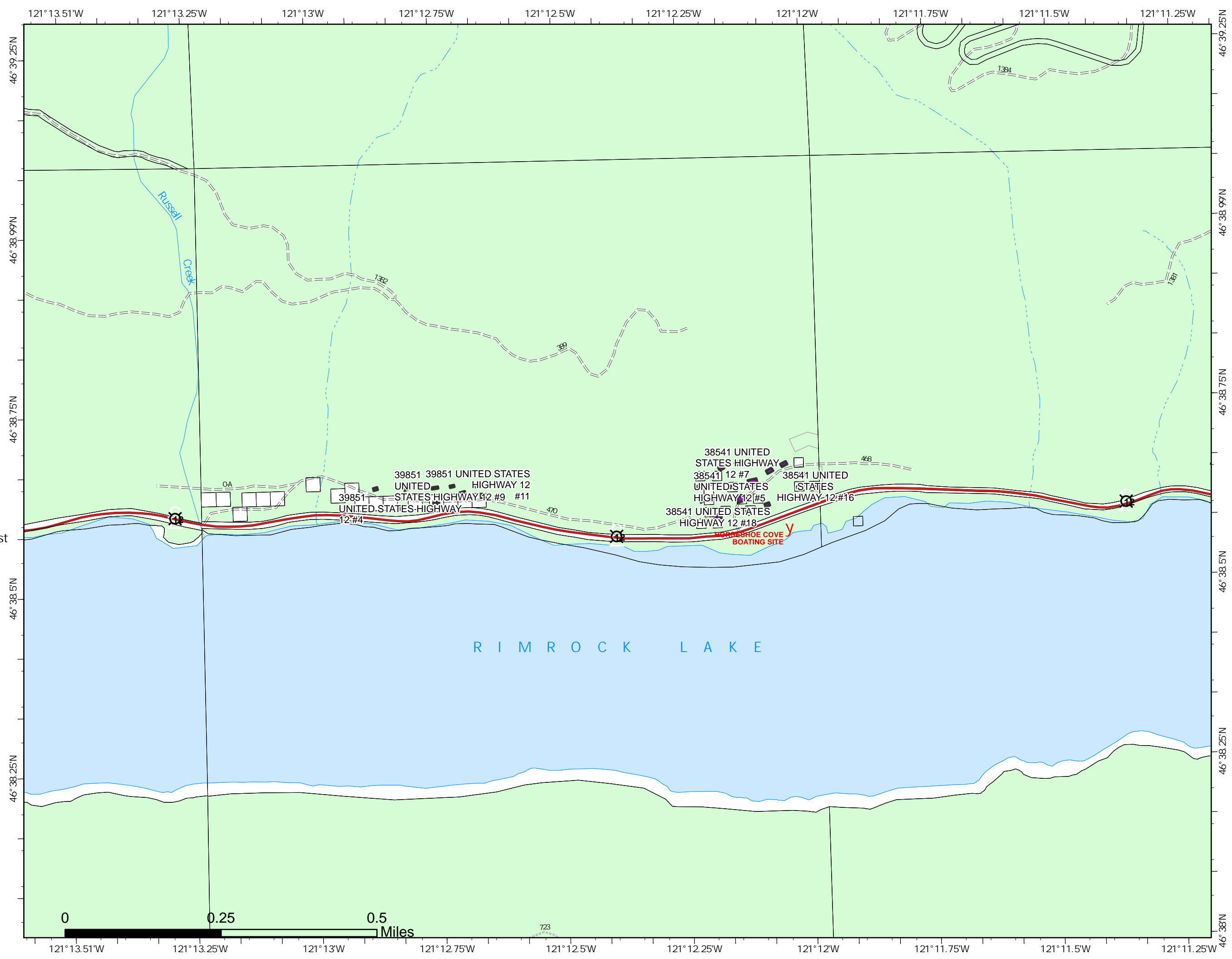


Page: 12.9

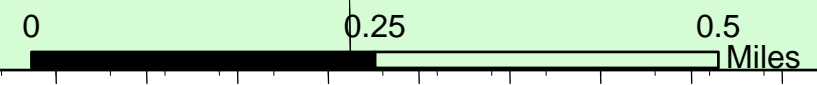
-  Taxlots
-  Building Outlines
-  Primary Highway
-  Lake / Pond
-  Boating Site
-  Unimproved Roads
-  Closed Roads
-  Stream/River; Artificial Path
-  Stream/River Intermittent
-  Administrative FS Boundary

FCode

-  Lake / Pond
-  USDA Forest Service: National Forest
-  Private



PNW2
8/23/2021 2137
Acres from IR
North American 1983 Datum.
LatLong Grid



Structure Protection Map

Schneider Springs
WAOWF-000453
8/24/21 Day

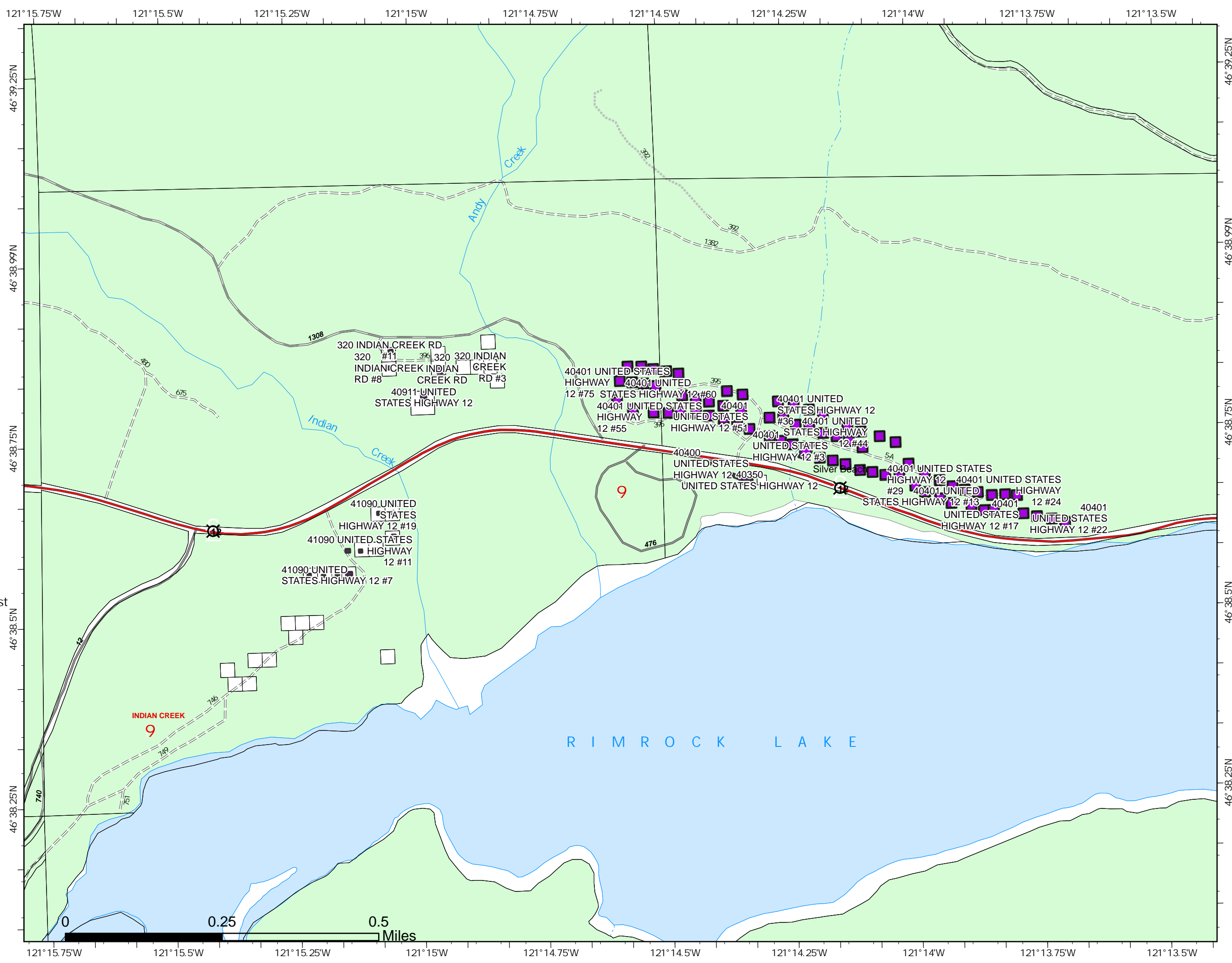
68,193 acres at 8/22/2021
1610



Page: 12.10

- Taxlots
- Building Outlines
- Primary Highway
- Lake / Pond
- GNIS Populated Places Some
- Campground
- Paved Road
- Gravel Road
- Unimproved Roads
- Closed Roads
- Stream/River; Artificial Path
- Stream/River Intermittent
- Administrative FS Boundary

- FCode
- Lake / Pond
 - USDA Forest Service: National Forest
 - Private



PNW2
8/23/2021 2137
Acres from IR
North American 1983 Datum.
LatLong Grid

Structure Protection Map

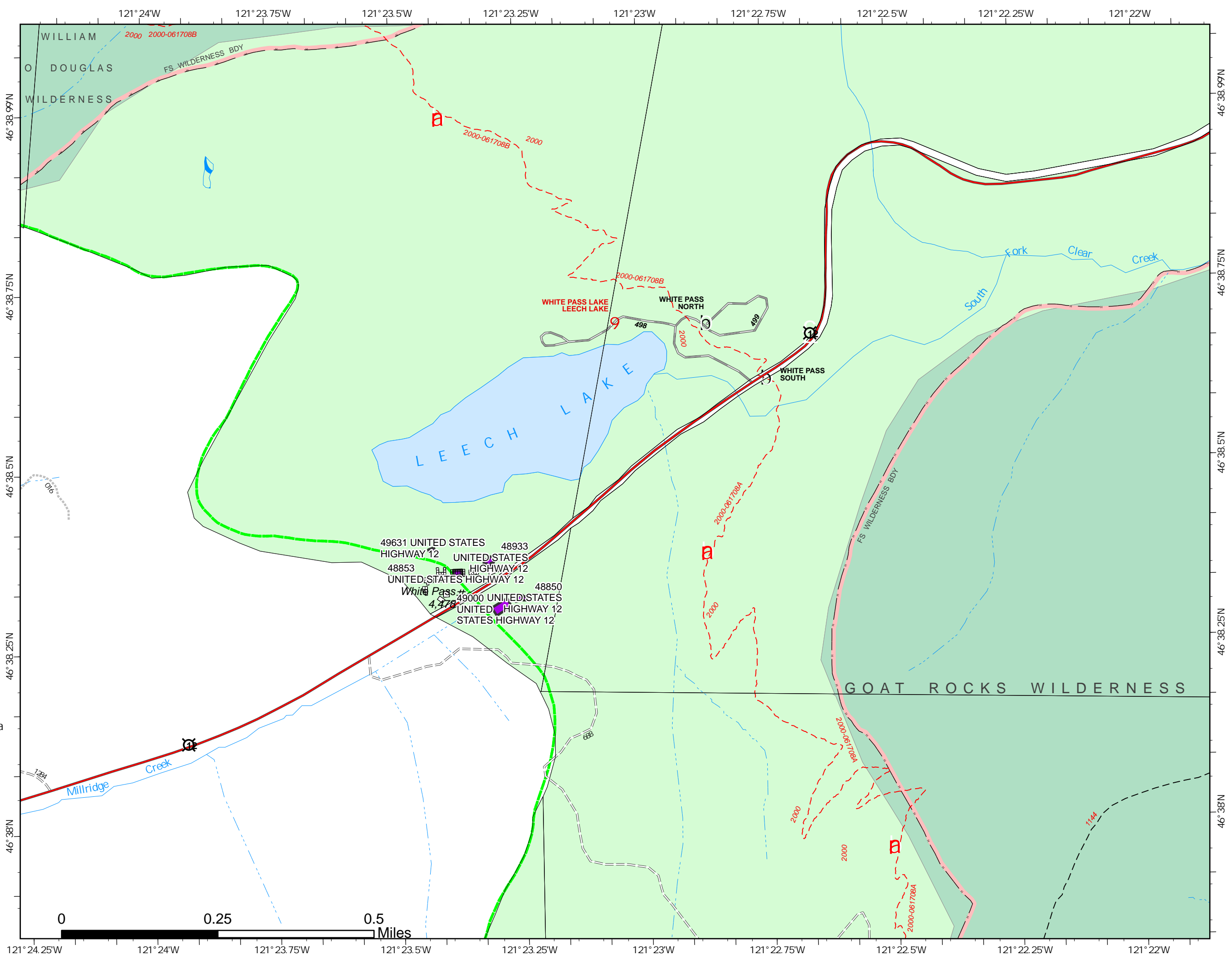
Schneider Springs
WAOWF-000453
8/24/21 Day

68,193 acres at 8/22/2021
1610



Page: 12.11

- Taxlots
 - Building Outlines
 - Primary Highway
 - Lake / Pond
 - Summit; Gap
 - Campground
 - Trailhead
 - National Designated Trail
 - Trail
 - National Designated Trail
 - Gravel Road
 - Unimproved Roads
 - Closed Roads
 - Waterfall
 - Stream/River; Artificial Path
 - Stream/River Intermittent
 - Administrative FS Boundary
 - Federal Wilderness Boundary
- FCode**
- Lake / Pond
 - Lake / Pond (Intermittent)
 - USDA Forest Service: National Forest
 - USDA Forest Service: Wilderness Area
 - Private



PNW2
8/23/2021 2137
Acres from IR
North American 1983 Datum.
LatLong Grid

