

IAP Map Index

Schneider Springs
WAOWF-000453

8/25/21

68,193 acres at 8/22/2021 1610

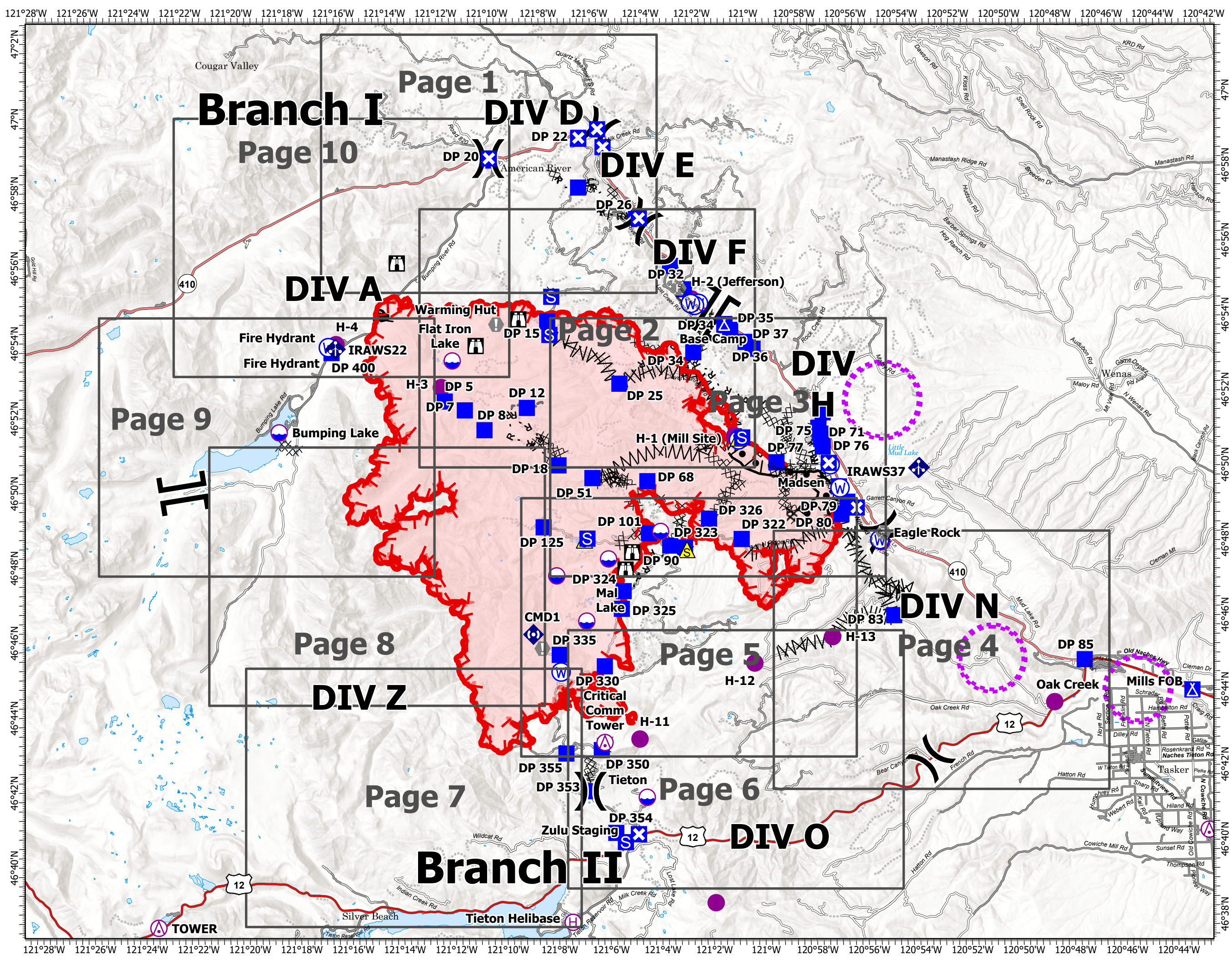
0 1 2 3 4 5 6

Miles

- Aerial Hazard
- Dip Site
- Helispot
- Helibase
- Division Break
- Branch Break
- Drop Point
- Closure
- Camp
- Staging Area
- Lookout
- Value at Risk
- Fire Station
- Mobile Weather Unit
- Repeater
- Safety Zone
- Water Source
- Restricted Water Source
- Completed Burnout
- Completed Dozer Line
- Completed Fuel Break
- Completed Hand Line
- Completed Mixed Construction Line
- Completed Road as Line
- Access or Improved Road
- Other
- Aerial Hazard
- UAS Launch and Recovery Zone
- Fire Edge
- Contained Line
- Wildfire Daily Fire Perimeter
- Grid Index



PNW2
8/24/2021 2055
Acres from IR
North American 1983 Datum.
Lat/Long Grid



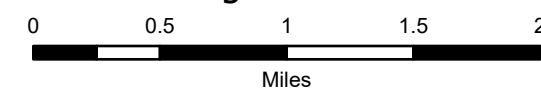
IAP Map

Schneider Springs
WAOWF-000453

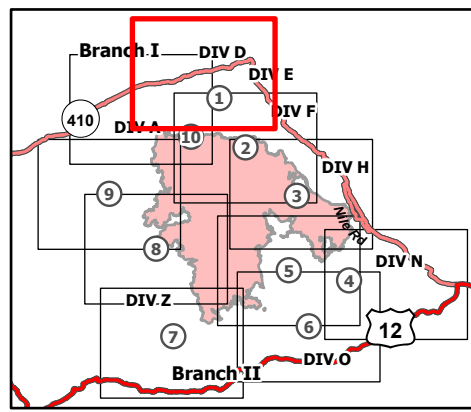
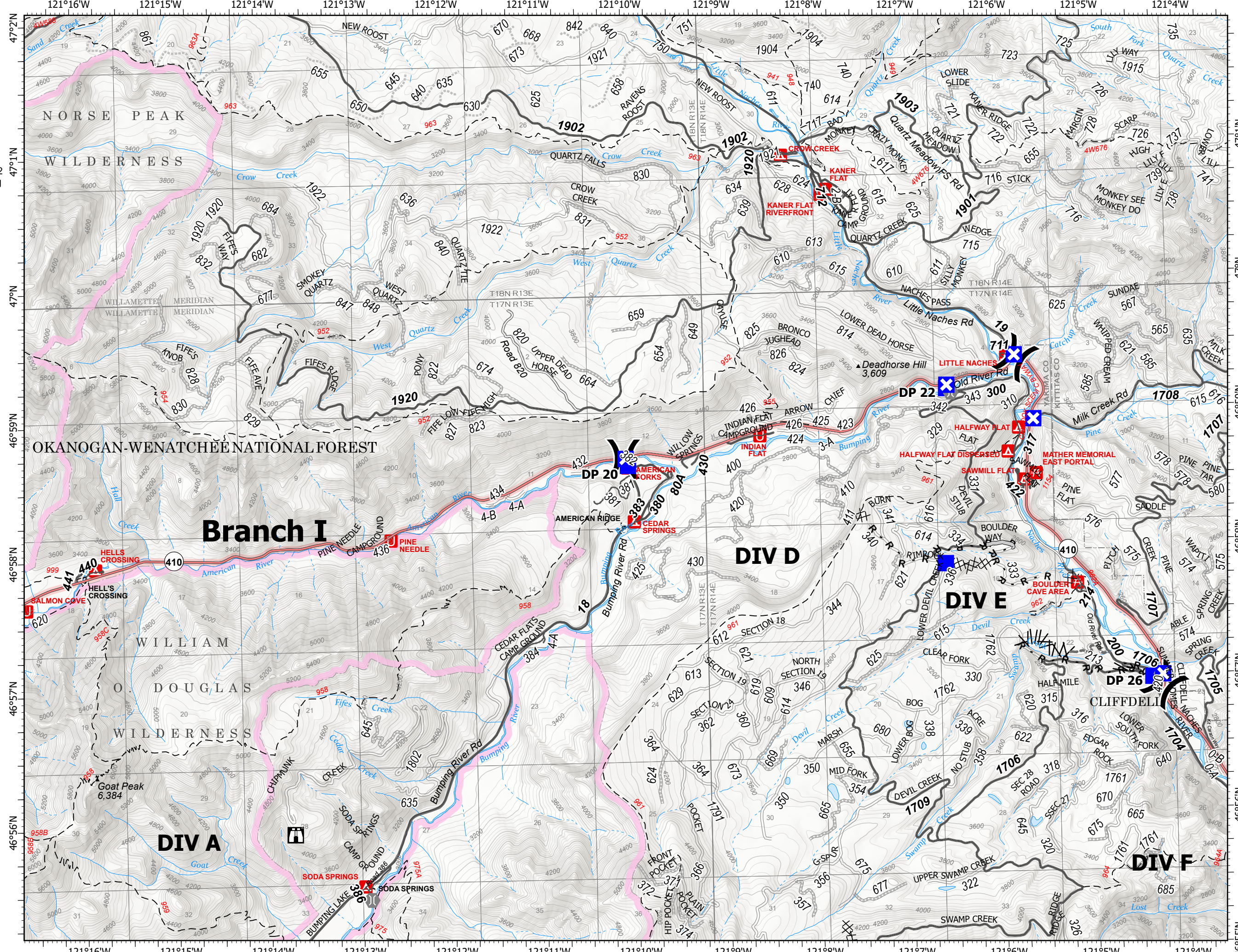
8/25/21

68,193 acres at 8/22/2021 1610

Page 1 of 10



- () Division Break
- Drop Point
- ⊠ Closure
- Ⓢ Staging Area
- 🏠 Lookout
- 🌉 Bridge
- ⊗⊗ Completed Dozer Line
- ⚡ Completed Fuel Break
- R - Completed Road as Line
- Access or Improved Road
- - - Other
- 🟩 Administrative FS Boundary
- 🟪 FS Wilderness Boundary



8/24/2021 2045
Acres from IR
North American 1983 Datum.
Lat/Long Grid



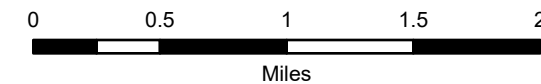
IAP Map

Schneider Springs
WAOWF-000453

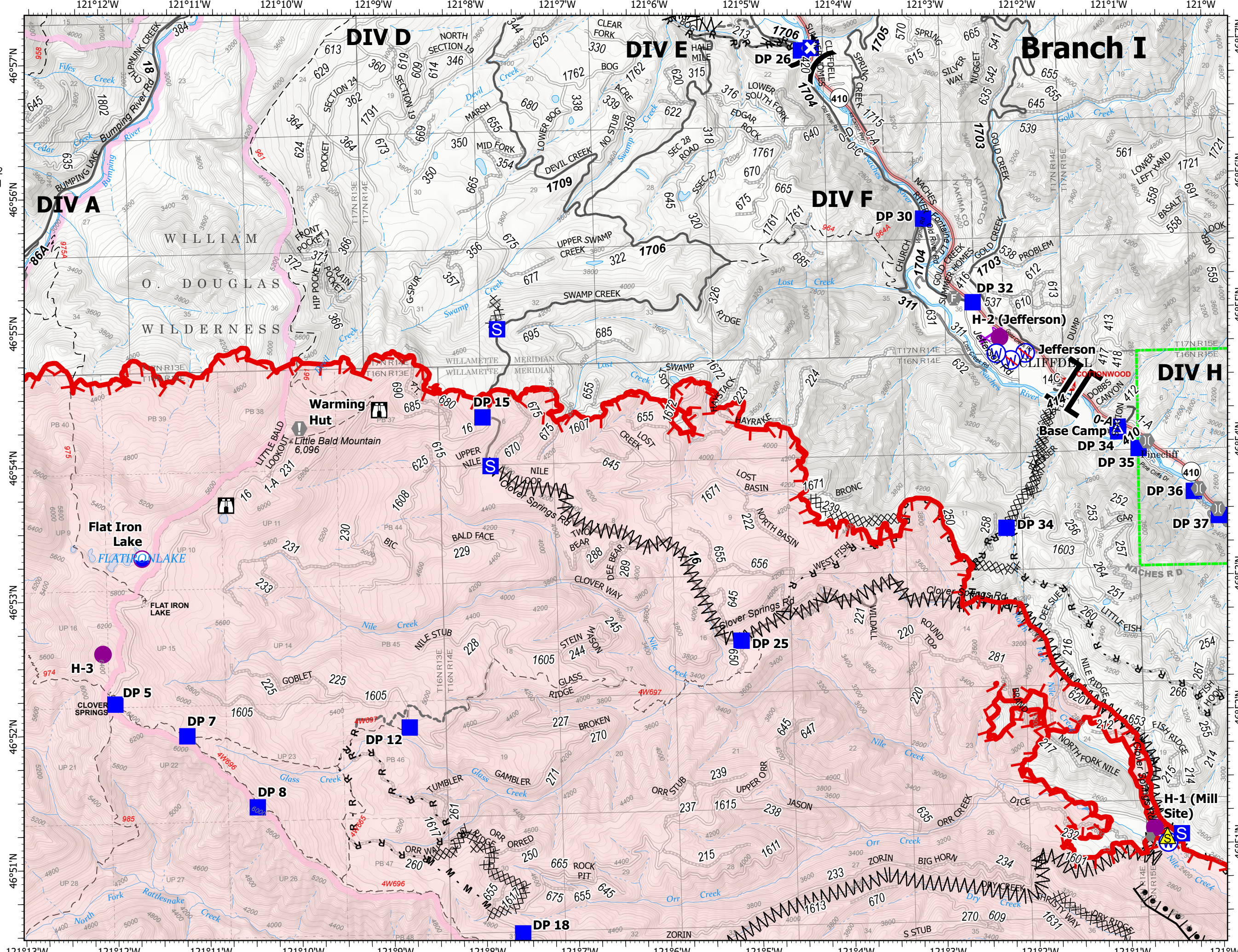
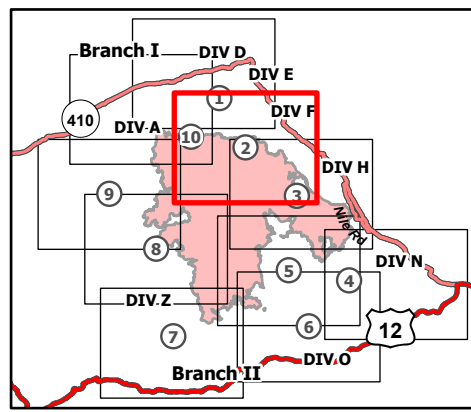
8/25/21

68,193 acres at 8/22/2021 1610

Page 2 of 10



- Dip Site
- Helispot
- Division Break
- Branch Break
- Drop Point
- Closure
- Camp
- Staging Area
- Lookout
- Value at Risk
- Other
- Fire Station
- Bridge
- Safety Zone
- Water Source
- Restricted Water Source
- Completed Burnout
- Completed Dozer Line
- Completed Fuel Break
- Completed Hand Line
- Completed Mixed Construction Line
- Completed Road as Line
- Other
- Aerial Hazard
- Fire Edge
- Administrative FS Boundary
- FS Wilderness Boundary
- Wildfire Daily Fire Perimeter



8/24/2021 2045
Acres from IR
North American 1983 Datum.
Lat/Long Grid



IAP Map

Schneider Springs
WAOWF-000453

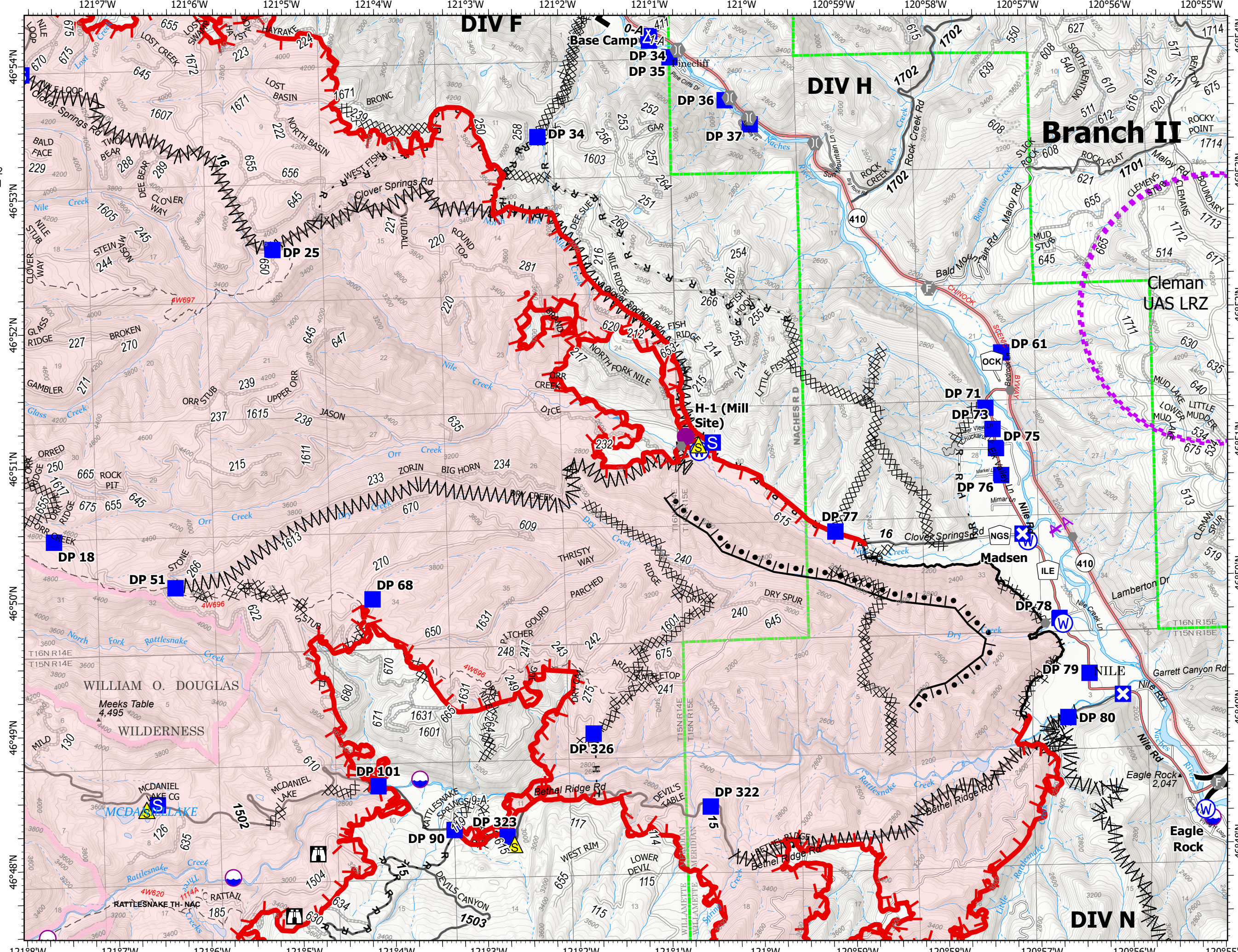
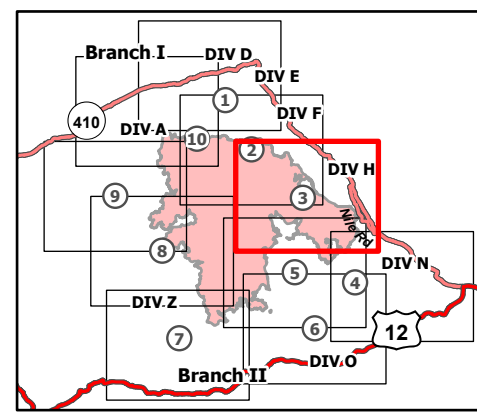
8/25/21

68,193 acres at 8/22/2021 1610

Page 3 of 10



- Dip Site
- Helispot
- ⌵ Division Break
- || Branch Break
- Drop Point
- ⊠ Closure
- ⊠ Camp
- ⊠ Staging Area
- ⊠ Lookout
- Other
- Fire Station
- Bridge
- ▲ Safety Zone
- ⊠ Water Source
- ⊠ Completed Burnout
- ⊠ Completed Dozer Line
- ⊠ Completed Fuel Break
- ⊠ Completed Hand Line
- ⊠ Completed Mixed Construction Line
- ⊠ Completed Road as Line
- Access or Improved Road
- ⊠ Aerial Hazard
- ⊠ UAS Launch and Recovery Zone
- Fire Edge
- Contained Line
- Administrative FS Boundary
- FS Wilderness Boundary
- Wildfire Daily Fire Perimeter



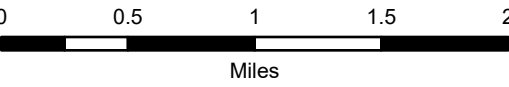
IAP Map

Schneider Springs
WAOWF-000453

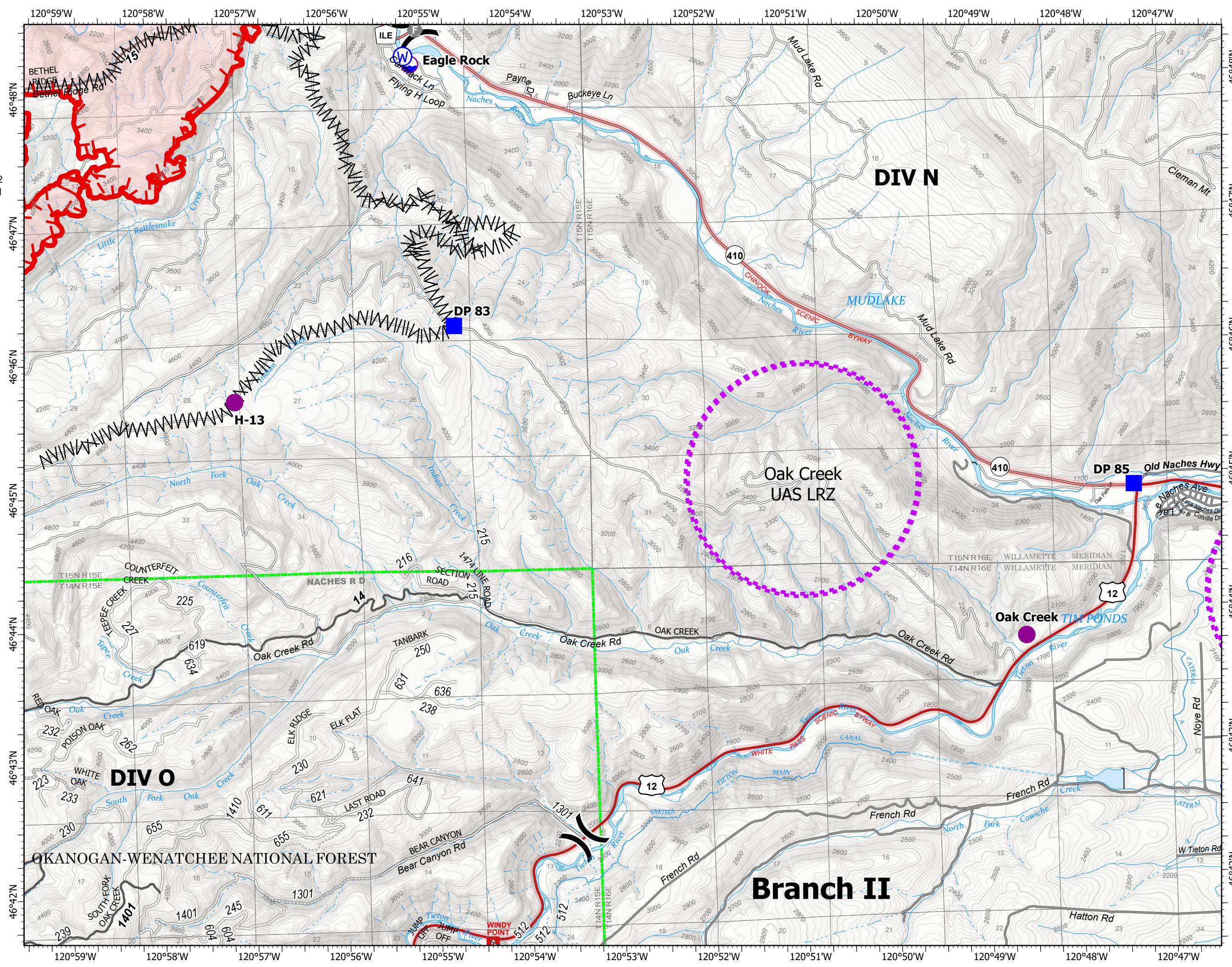
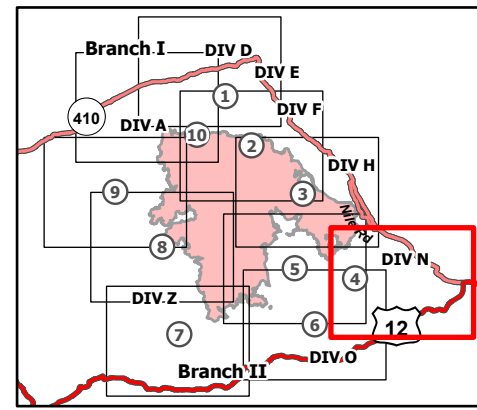
8/25/21

68,193 acres at 8/22/2021 1610

Page 4 of 10



- Dip Site
- Helispot
- Division Break
- Drop Point
- Fire Station
- Water Source
- Completed Fuel Break
- UAS Launch and Recovery Zone
- Fire Edge
- Administrative FS Boundary
- Wildfire Daily Fire Perimeter



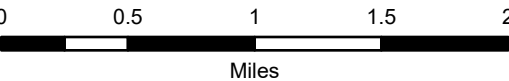
IAP Map

Schneider Springs
WAOWF-000453

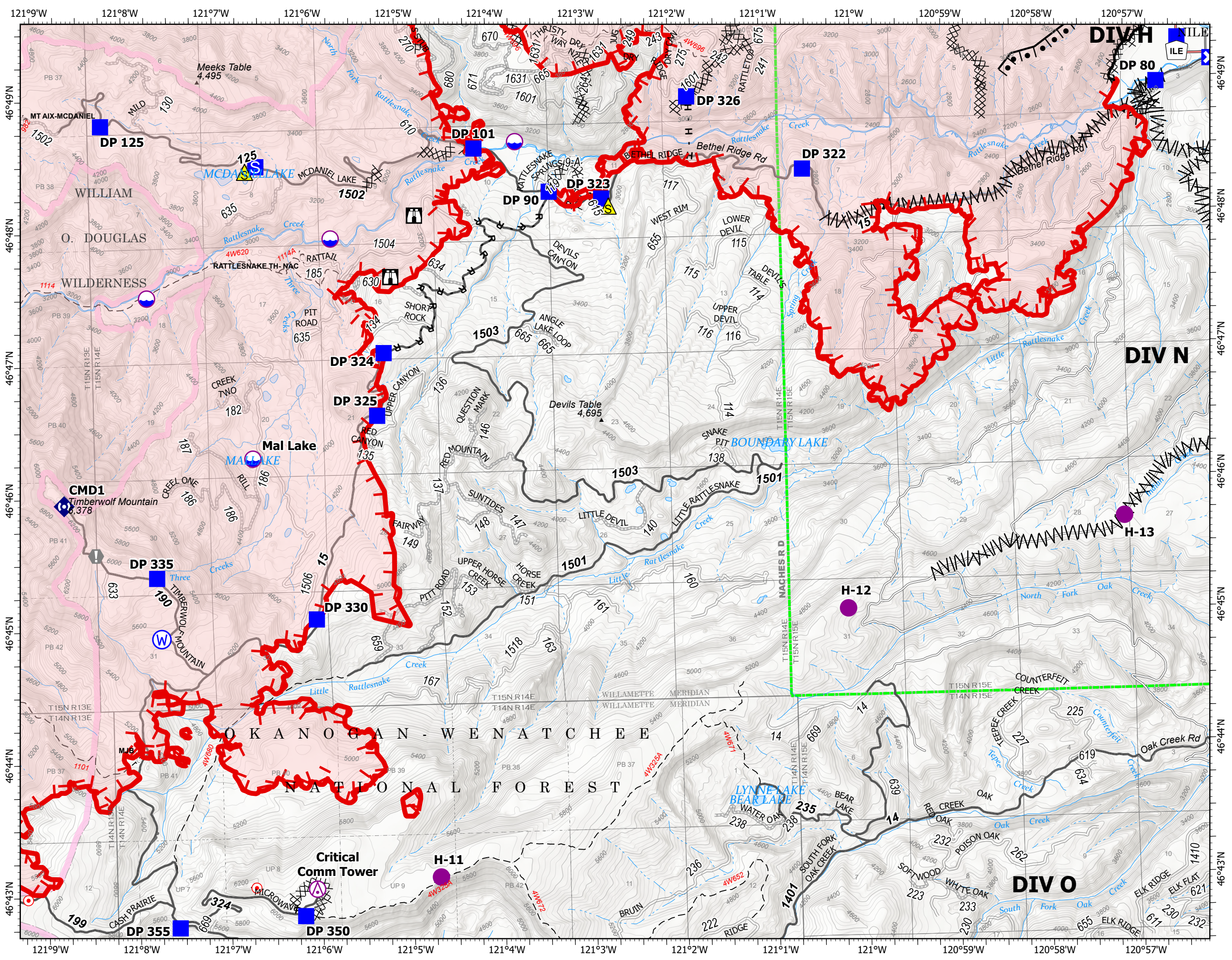
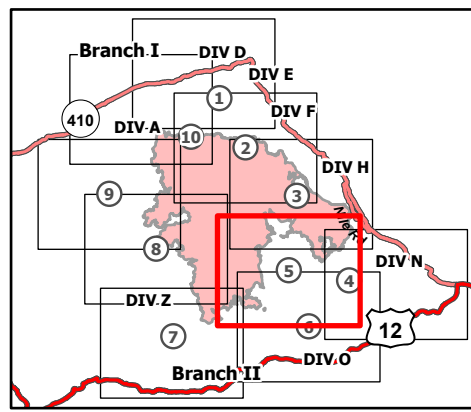
8/25/21

68,193 acres at 8/22/2021 1610

Page 5 of 10



- Aerial Hazard
- Dip Site
- Helispot
- Drop Point
- Closure
- Staging Area
- Lookout
- Hot Spot - Spot Fire
- Value at Risk
- Repeater
- Safety Zone
- Water Source
- Completed Burnout
- Completed Dozer Line
- Completed Fuel Break
- Completed Hand Line
- Completed Road as Line
- Other
- Fire Edge
- Contained Line
- Administrative FS Boundary
- FS Wilderness Boundary
- Wildfire Daily Fire Perimeter



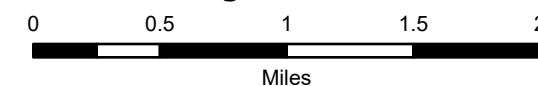
IAP Map

Schneider Springs
WAOWF-000453

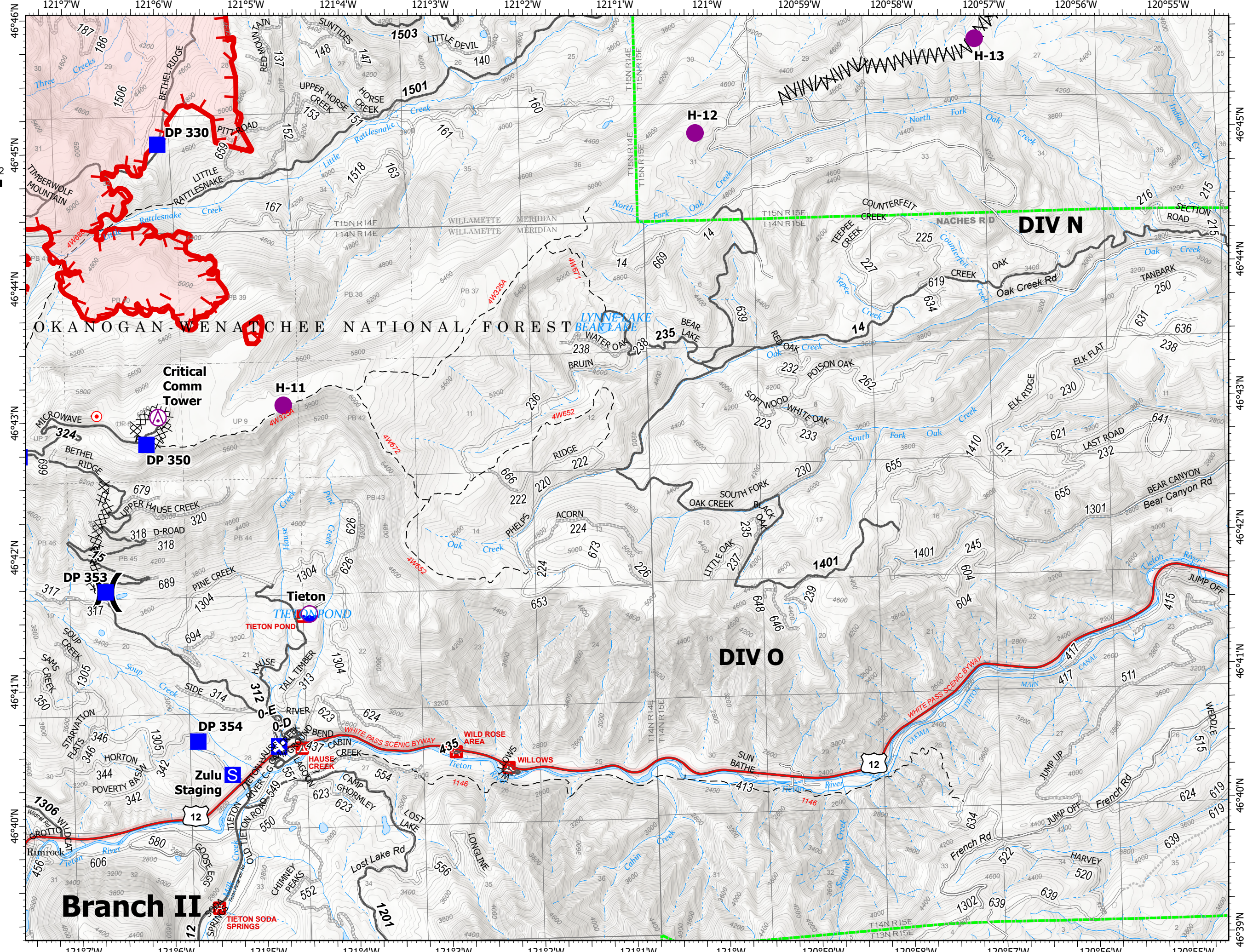
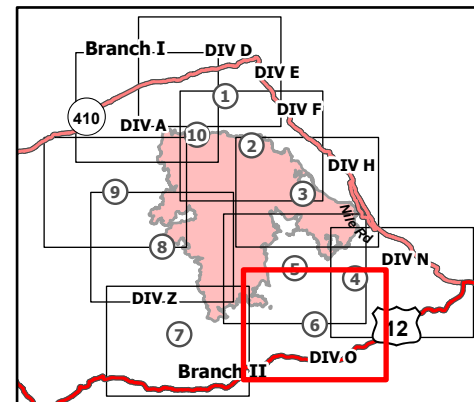
8/25/21

68,193 acres at 8/22/2021 1610

Page 6 of 10



- Aerial Hazard
- Dip Site
- Helispot
- Division Break
- Drop Point
- Closure
- Staging Area
- Hot Spot - Spot Fire
- Water Source
- Completed Dozer Line
- Completed Fuel Break
- Completed Hand Line
- Completed Road as Line
- Fire Edge
- Administrative FS Boundary
- Wildfire Daily Fire Perimeter



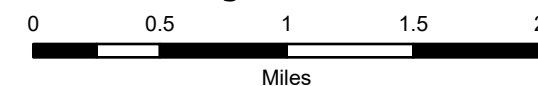
IAP Map

Schneider Springs
WAOWF-000453

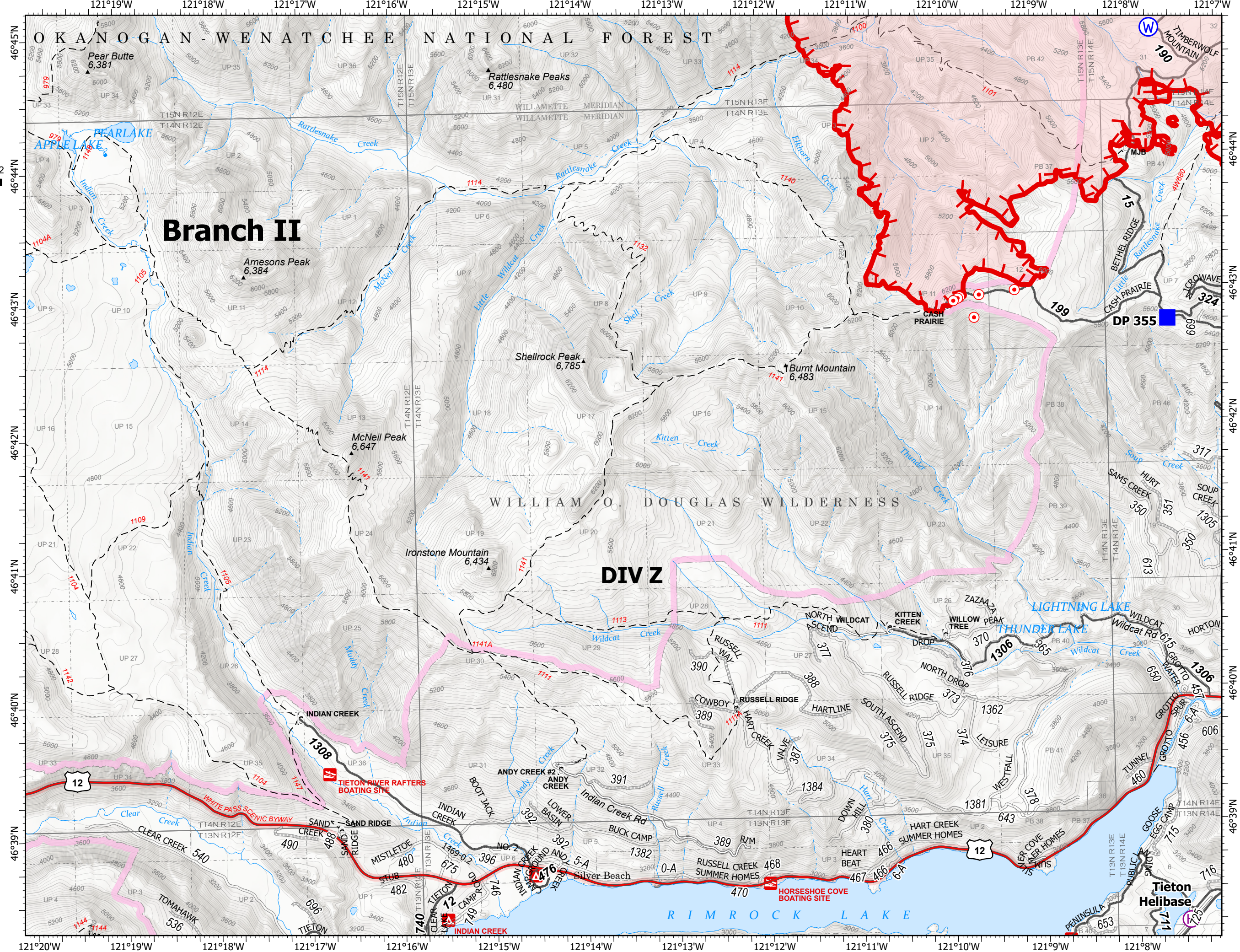
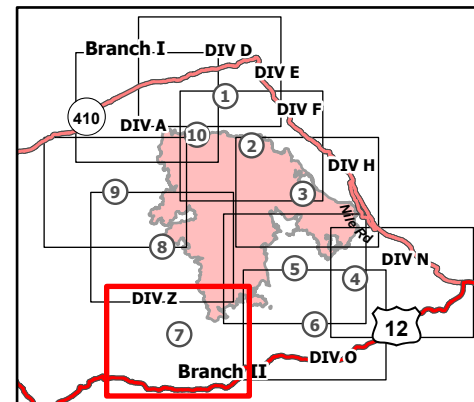
8/25/21

68,193 acres at 8/22/2021 1610

Page 7 of 10



- ⊕ Helibase
-) Division Break
- Drop Point
- ⊙ Hot Spot - Spot Fire
- ⊙ Water Source
- H - Completed Hand Line
- Other
- ▬ Fire Edge
- ▬ Administrative FS Boundary
- ▬ FS Wilderness Boundary
- ▬ Wildfire Daily Fire Perimeter



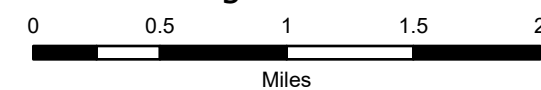
IAP Map

Schneider Springs
WAOWF-000453

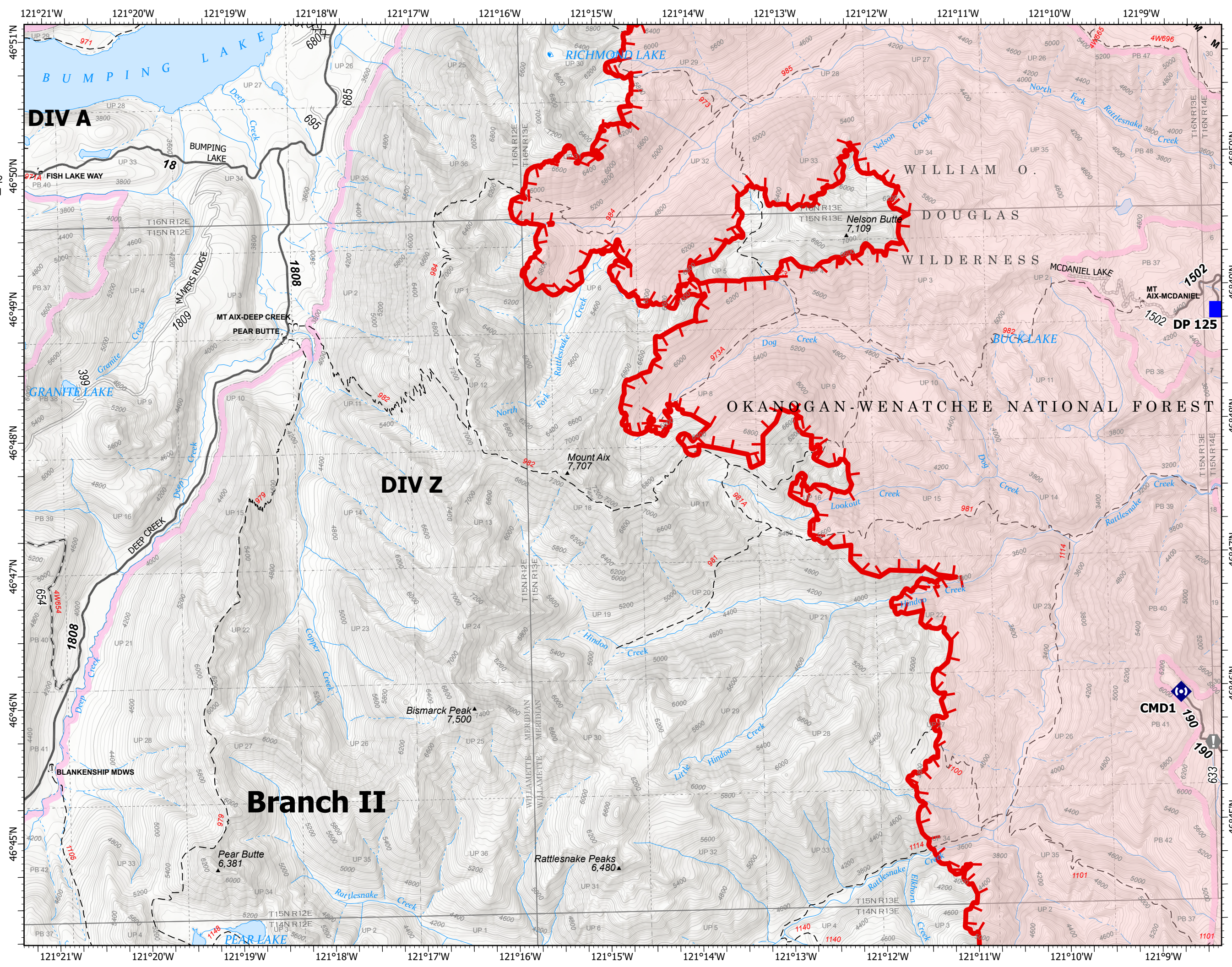
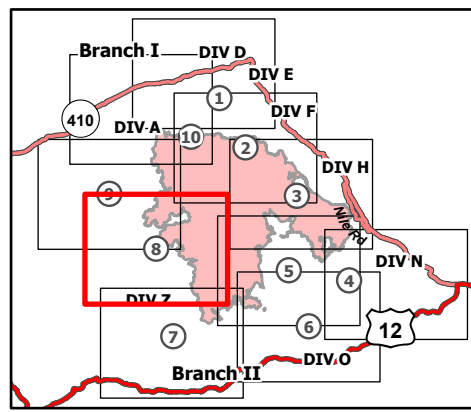
8/25/21

68,193 acres at 8/22/2021 1610

Page 8 of 10



- Drop Point
- Value at Risk
- Repeater
- Completed Dozer Line
- Completed Mixed Construction Line
- Completed Road as Line
- Fire Edge
- Administrative FS Boundary
- FS Wilderness Boundary
- Wildfire Daily Fire Perimeter



8/24/2021 2047
Acres from IR
North American 1983 Datum.
Lat/Long Grid



IAP Map

Schneider Springs
WAOWF-000453

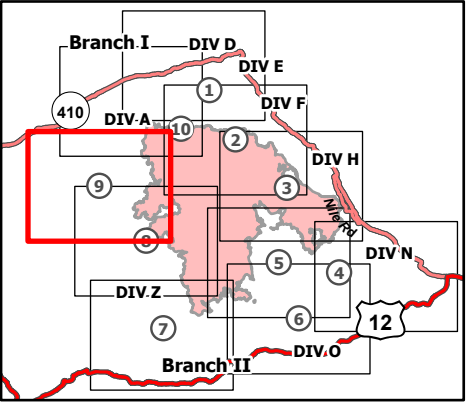
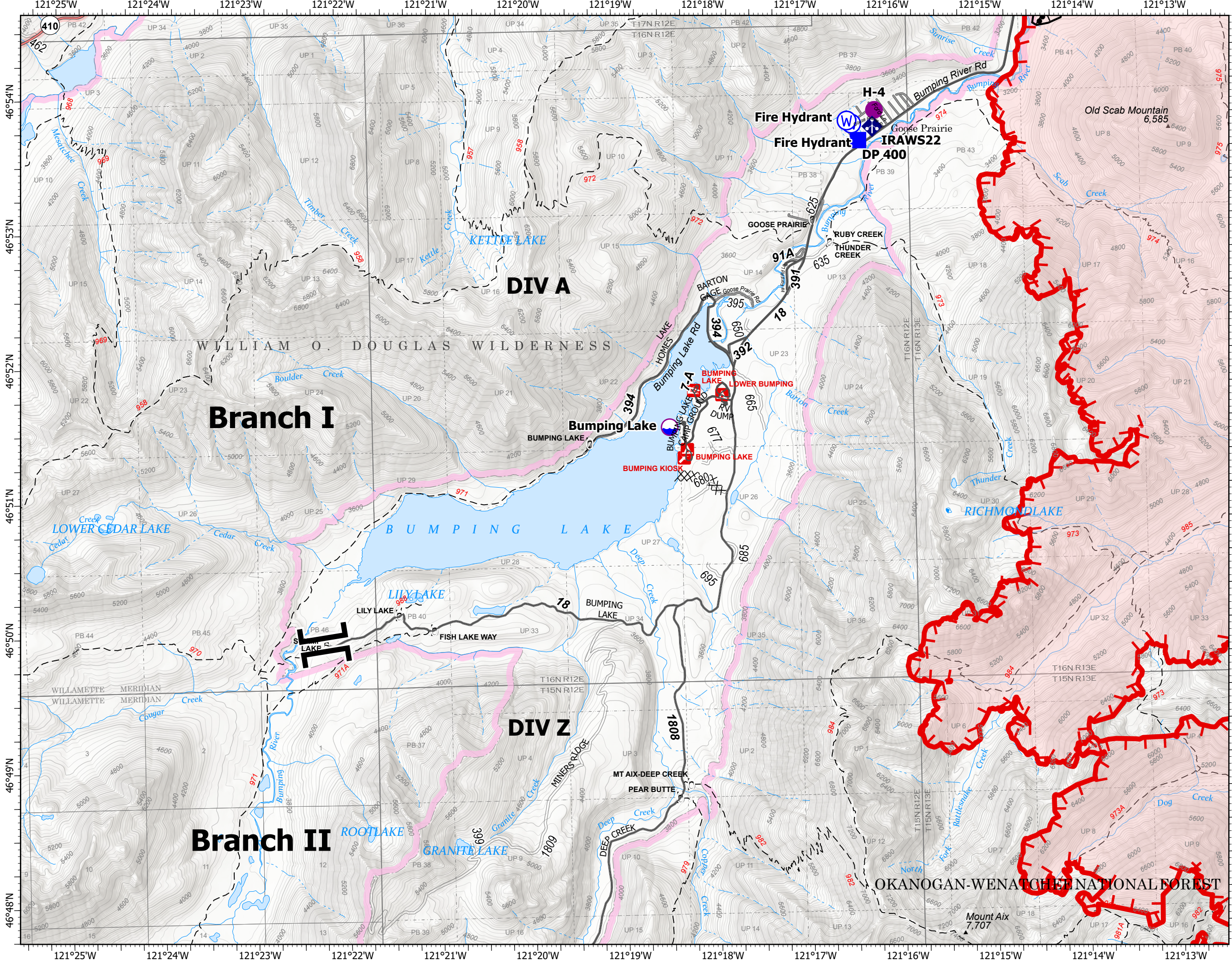
8/25/21

68,193 acres at 8/22/2021 1610

Page 9 of 10



- Dip Site
- Helispot
- Branch Break
- Drop Point
- Mobile Weather Unit
- Water Source
- Completed Burnout
- Completed Dozer Line
- Fire Edge
- Administrative FS Boundary
- FS Wilderness Boundary
- Wildfire Daily Fire Perimeter



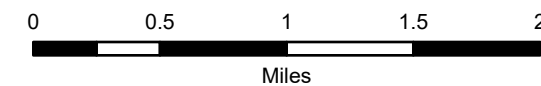
IAP Map

Schneider Springs
WAOWF-000453

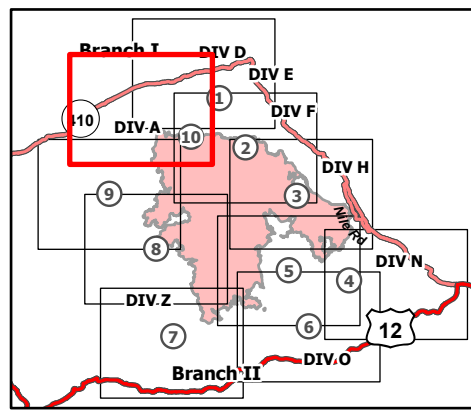
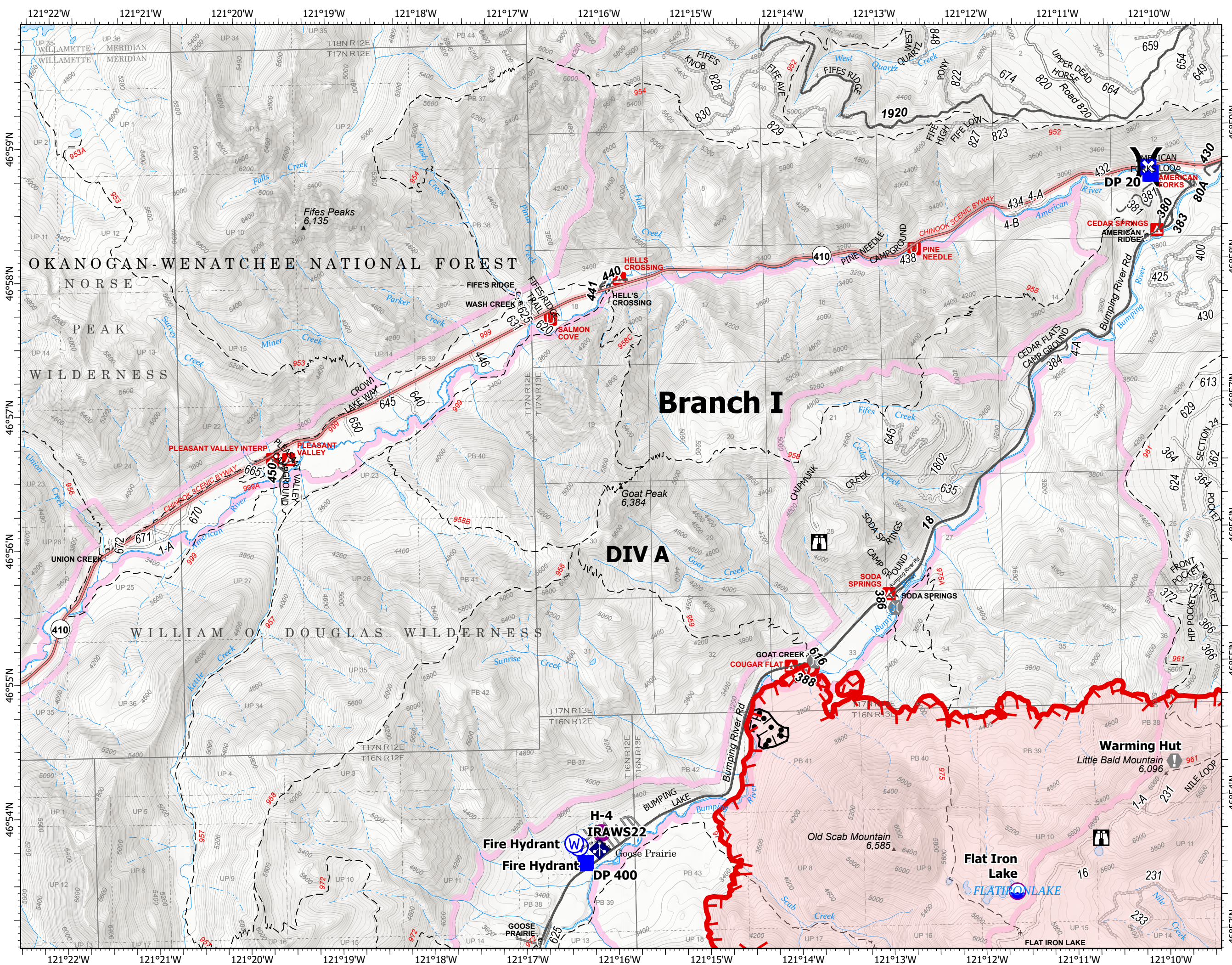
8/25/21

68,193 acres at 8/22/2021 1610

Page 10 of 10



- Dip Site
- Helispot
- Division Break
- Drop Point
- Closure
- Lookout
- Value at Risk
- Bridge
- Mobile Weather Unit
- Water Source
- Completed Burnout
- Fire Edge
- Administrative FS Boundary
- FS Wilderness Boundary
- Wildfire Daily Fire Perimeter



8/24/2021 2047
Acres from IR
North American 1983 Datum.
Lat/Long Grid

