

IAP Map Index

Schneider Springs
WA-OWF-000453

8/27/21

75,055 acres at 8/26/2021 1800

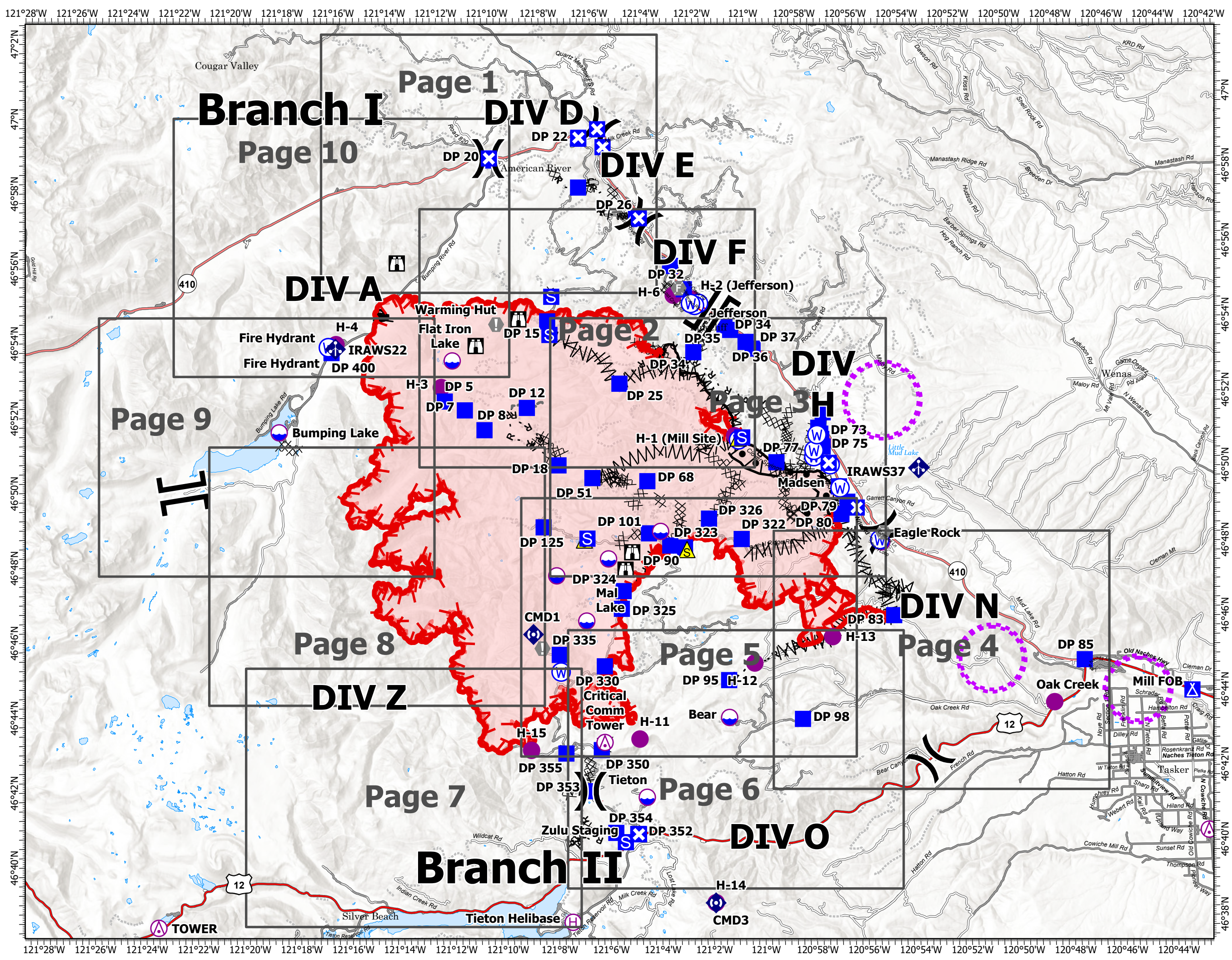
0 1 2 3 4 5 6

Miles

- Aerial Hazard
- Dip Site
- Helispot
- Helibase
- Division Break
- Branch Break
- Drop Point
- Closure
- Camp
- Staging Area
- Lookout
- Value at Risk
- Fire Station
- Mobile Weather Unit
- Repeater
- Safety Zone
- Water Source
- Restricted Water Source
- Completed Burnout
- Completed Dozer Line
- Completed Fuel Break
- Completed Hand Line
- Completed Mixed Construction Line
- Completed Road as Line
- Access or Improved Road
- Fence
- Other
- Aerial Hazard
- UAS Launch and Recovery Zone
- Fire Edge
- Contained Line
- Wildfire Daily Fire Perimeter
- Grid Index



PNW2
8/26/2021 2218
Acres from IR
North American 1983 Datum.
Lat/Long Grid



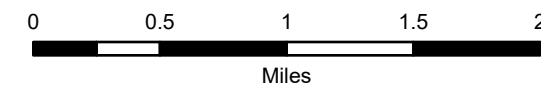
IAP Map

Schneider Springs
WA-OWF-000453

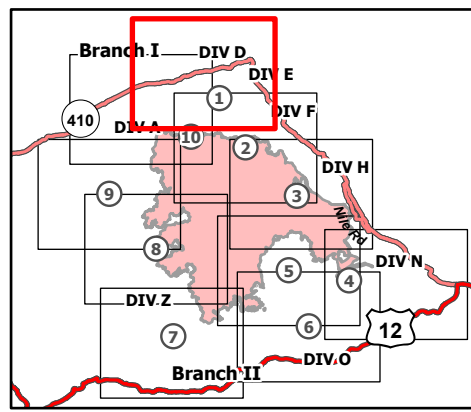
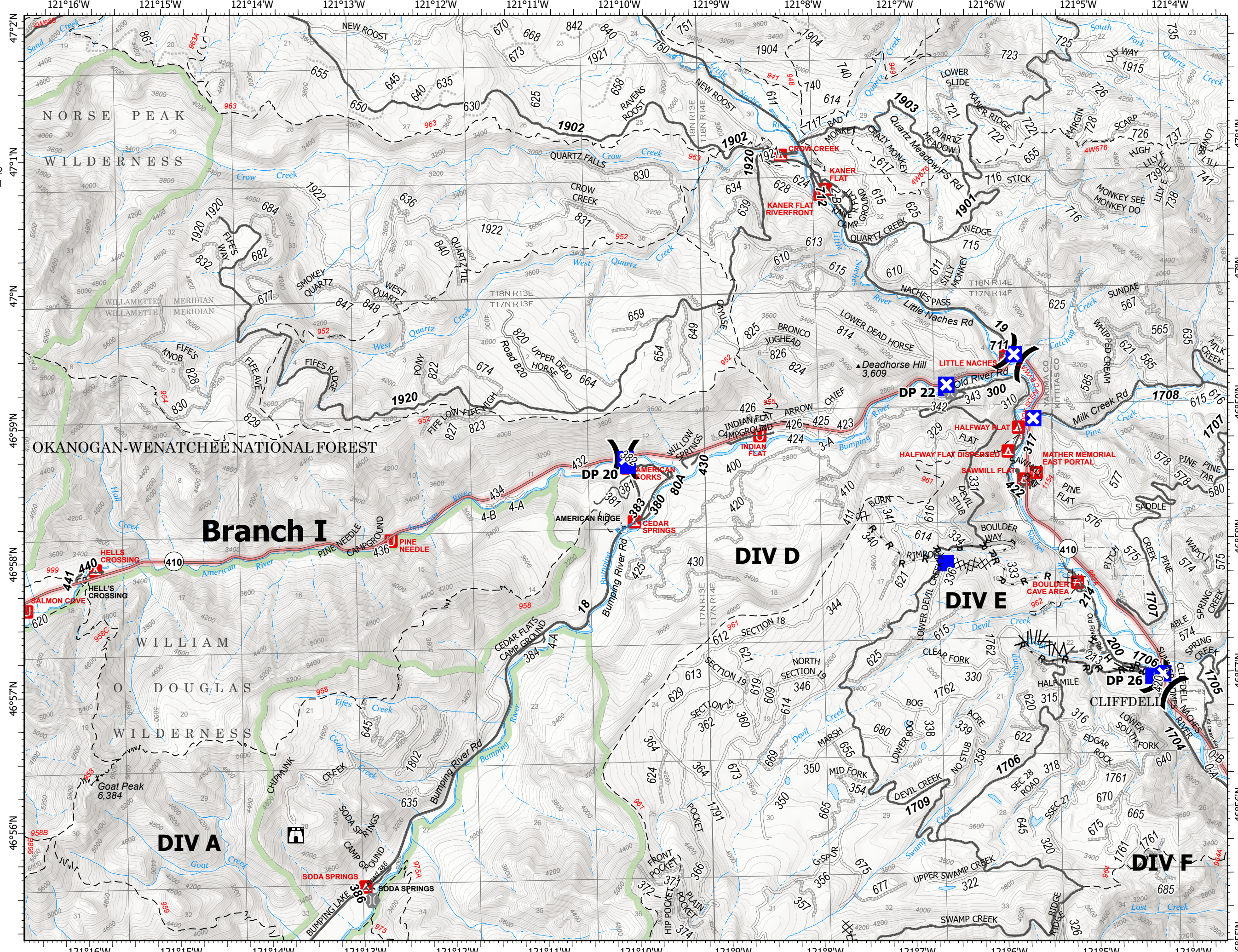
8/27/21

75,055 acres at 8/26/2021 1800

Page 1 of 10



- () Division Break
- Drop Point
- ⊗ Closure
- Ⓢ Staging Area
- 🏠 Lookout
- 🌉 Bridge
- ⊗⊗ Completed Dozer Line
- ⚡ Completed Fuel Break
- H - Completed Hand Line
- R - Completed Road as Line
- Access or Improved Road
- - - Other
- ▭ Administrative FS Boundary
- ▭ FS Wilderness Boundary



8/26/2021 2212
Acres from IR
North American 1983 Datum.
Lat/Long Grid



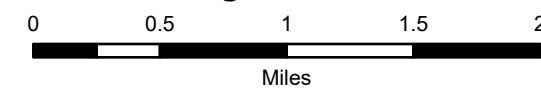
IAP Map

Schneider Springs
WA-OWF-000453

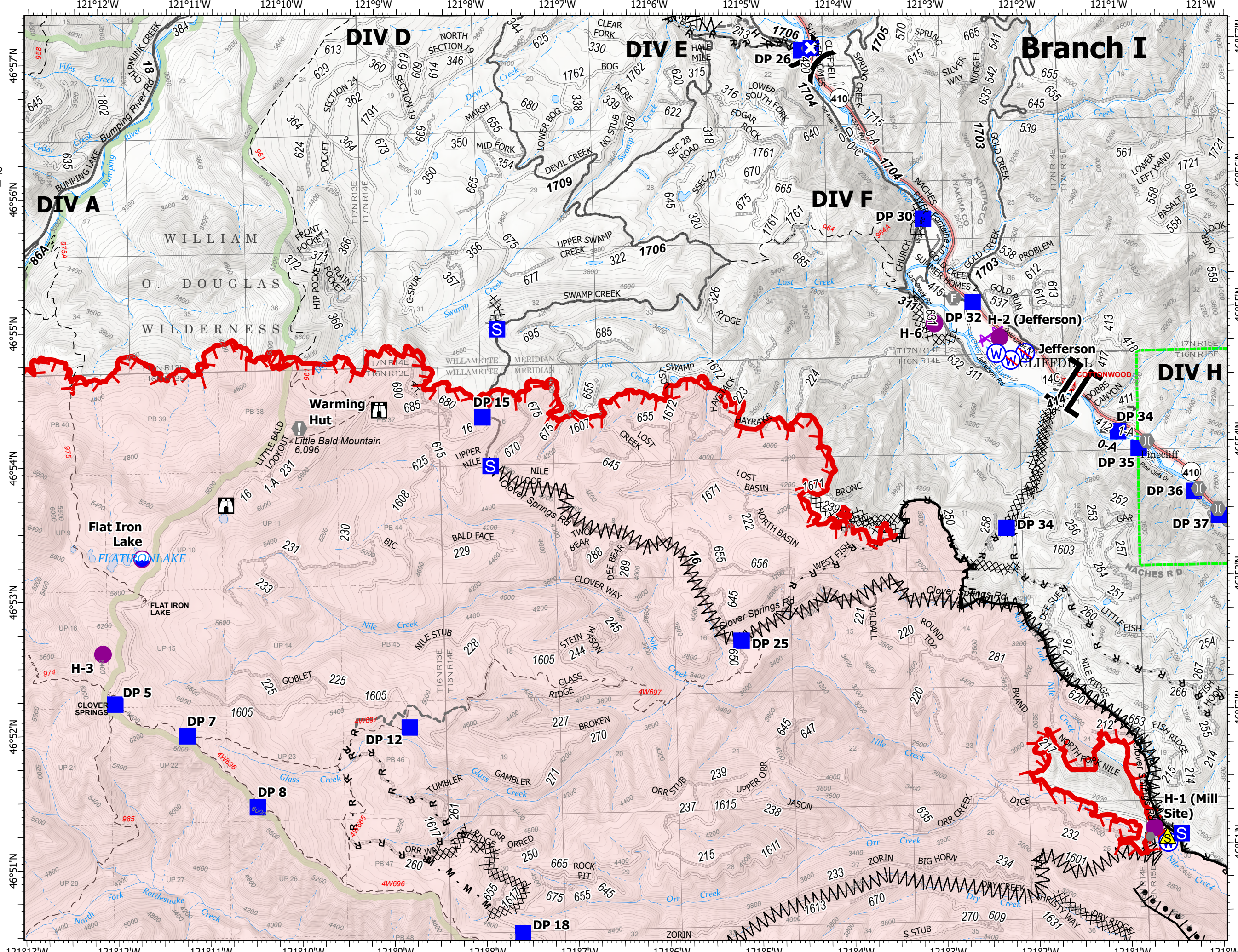
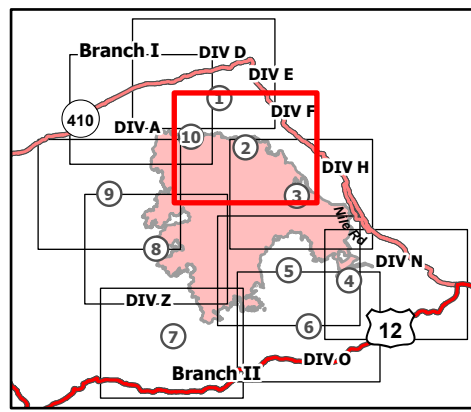
8/27/21

75,055 acres at 8/26/2021 1800

Page 2 of 10



- Dip Site
- Helispot
- Division Break
- Branch Break
- Drop Point
- Closure
- Staging Area
- Lookout
- Value at Risk
- Other
- Fire Station
- Bridge
- Safety Zone
- Water Source
- Restricted Water Source
- Completed Burnout
- Completed Dozer Line
- Completed Fuel Break
- Completed Hand Line
- Completed Mixed Construction Line
- Completed Road as Line
- Other
- Aerial Hazard
- Fire Edge
- Contained Line
- Administrative FS Boundary
- FS Wilderness Boundary
- Wildfire Daily Fire Perimeter



IAP Map

Schneider Springs
WA-OWF-000453

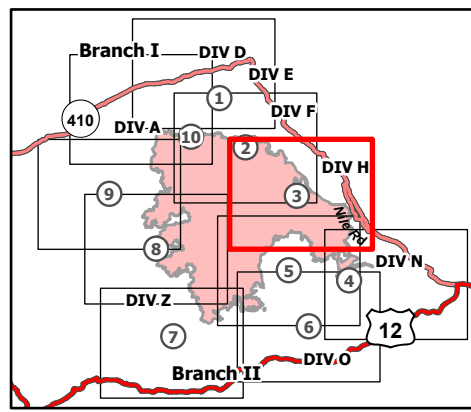
8/27/21

75,055 acres at 8/26/2021 1800

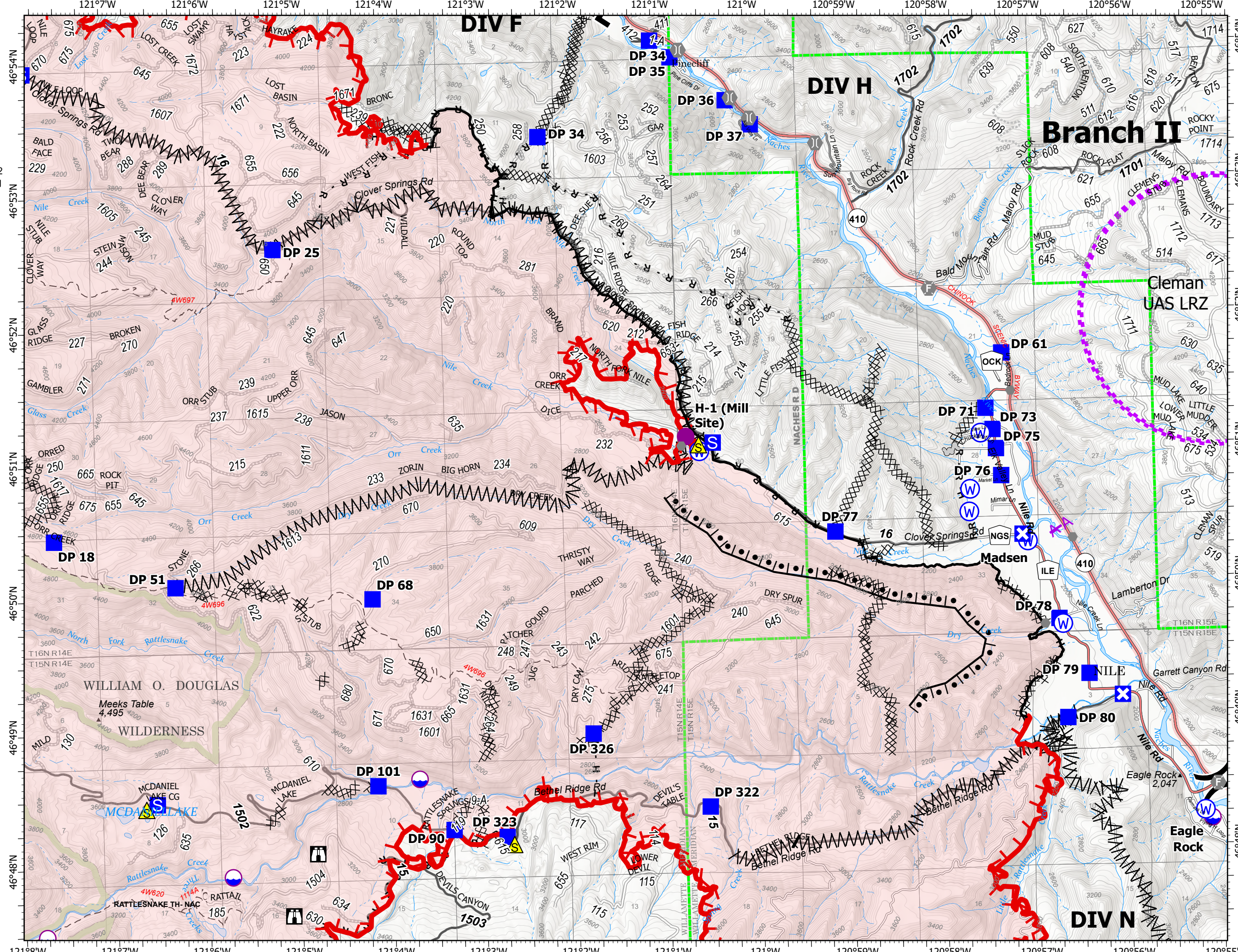
Page 3 of 10



- Dip Site
- Helispot
- Division Break
- Branch Break
- Drop Point
- Closure
- Staging Area
- Lookout
- Other
- Fire Station
- Bridge
- Safety Zone
- Water Source
- Completed Burnout
- Completed Dozer Line
- Completed Fuel Break
- Completed Hand Line
- Completed Mixed Construction Line
- Completed Road as Line
- Access or Improved Road
- Aerial Hazard
- UAS Launch and Recovery Zone
- Fire Edge
- Contained Line
- Administrative FS Boundary
- FS Wilderness Boundary
- Wildfire Daily Fire Perimeter



8/26/2021 2213
Acres from IR
North American 1983 Datum.
Lat/Long Grid



IAP Map

Schneider Springs
WA-OWF-000453

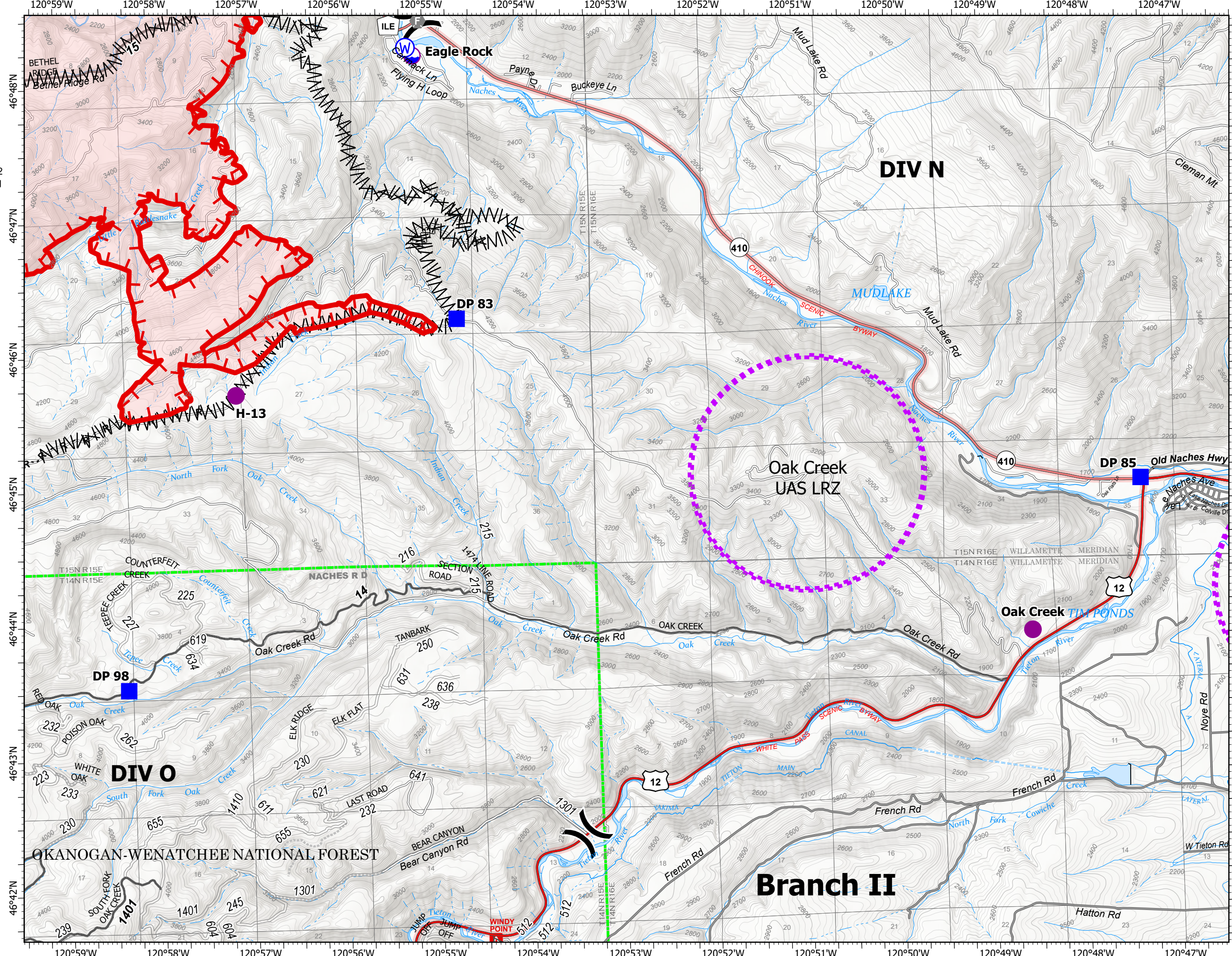
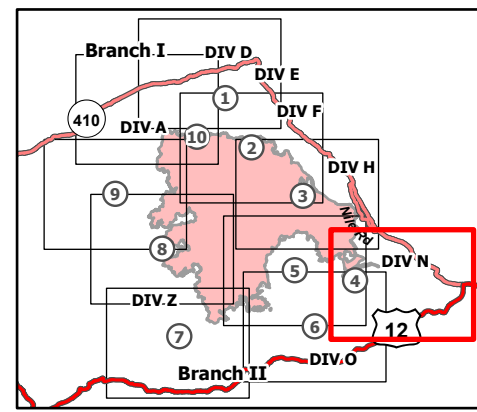
8/27/21

75,055 acres at 8/26/2021 1800

Page 4 of 10



- Dip Site
- Helispot
- Division Break
- Drop Point
- Fire Station
- Water Source
- Completed Dozer Line
- Completed Fuel Break
- Completed Road as Line
- UAS Launch and Recovery Zone
- Fire Edge
- Administrative FS Boundary
- Wildfire Daily Fire Perimeter



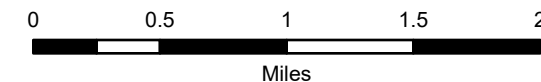
IAP Map

Schneider Springs
WA-OWF-000453

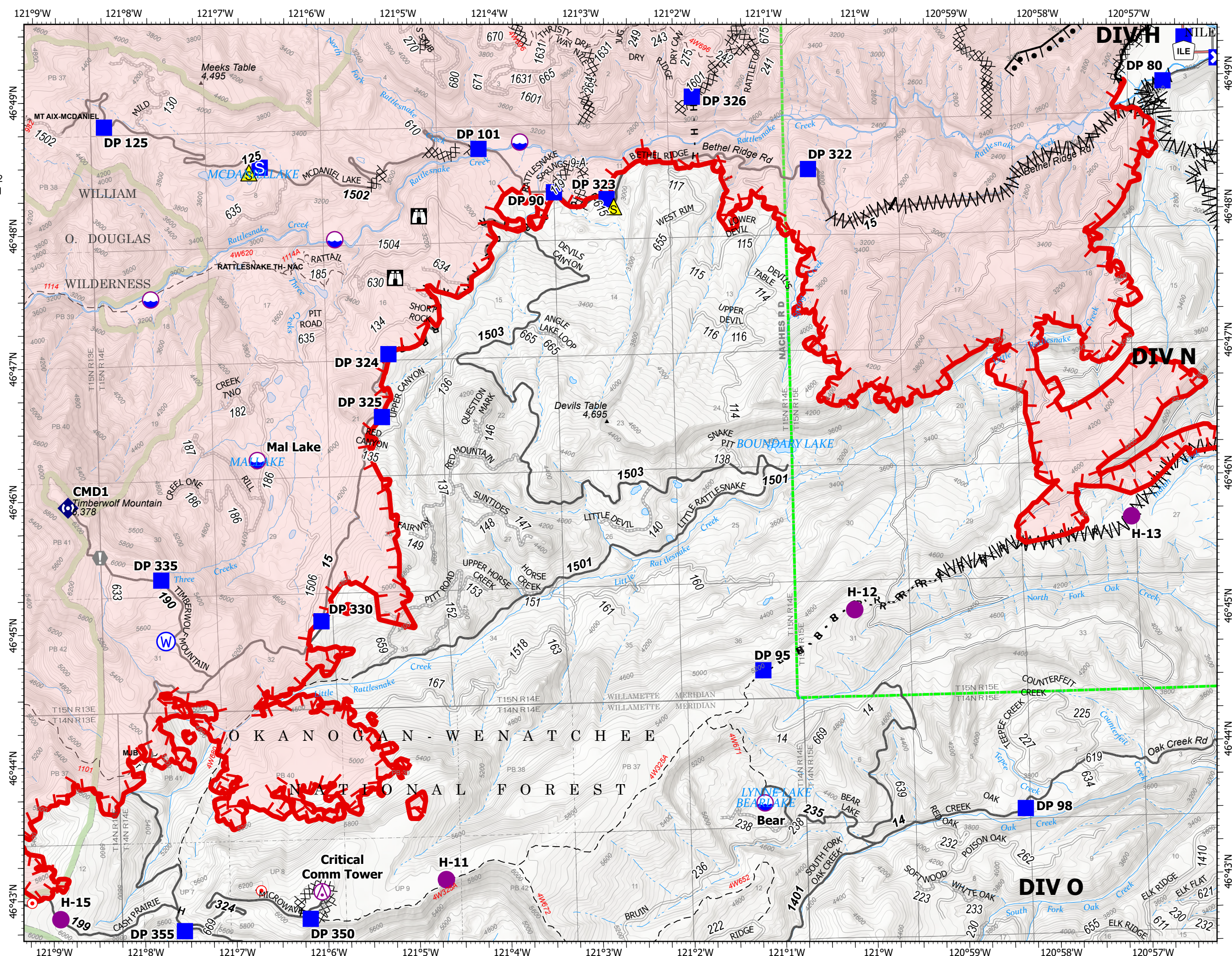
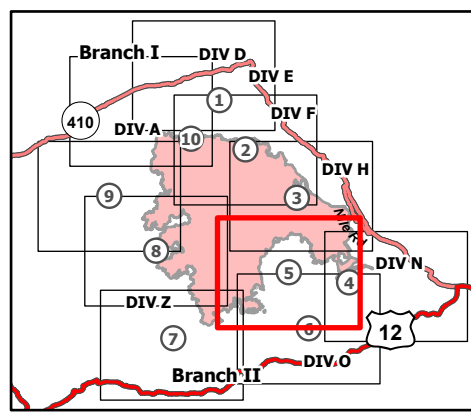
8/27/21

75,055 acres at 8/26/2021 1800

Page 5 of 10



- Aerial Hazard
- Dip Site
- Helispot
- Drop Point
- Closure
- Staging Area
- Lookout
- Hot Spot - Spot Fire
- Value at Risk
- Repeater
- Safety Zone
- Water Source
- Completed Burnout
- Completed Dozer Line
- Completed Fuel Break
- Completed Hand Line
- Completed Road as Line
- Other
- Fire Edge
- Contained Line
- Administrative FS Boundary
- FS Wilderness Boundary
- Wildfire Daily Fire Perimeter



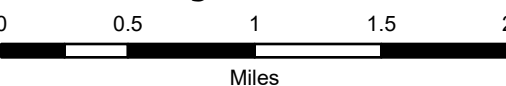
IAP Map

Schneider Springs
WA-OWF-000453

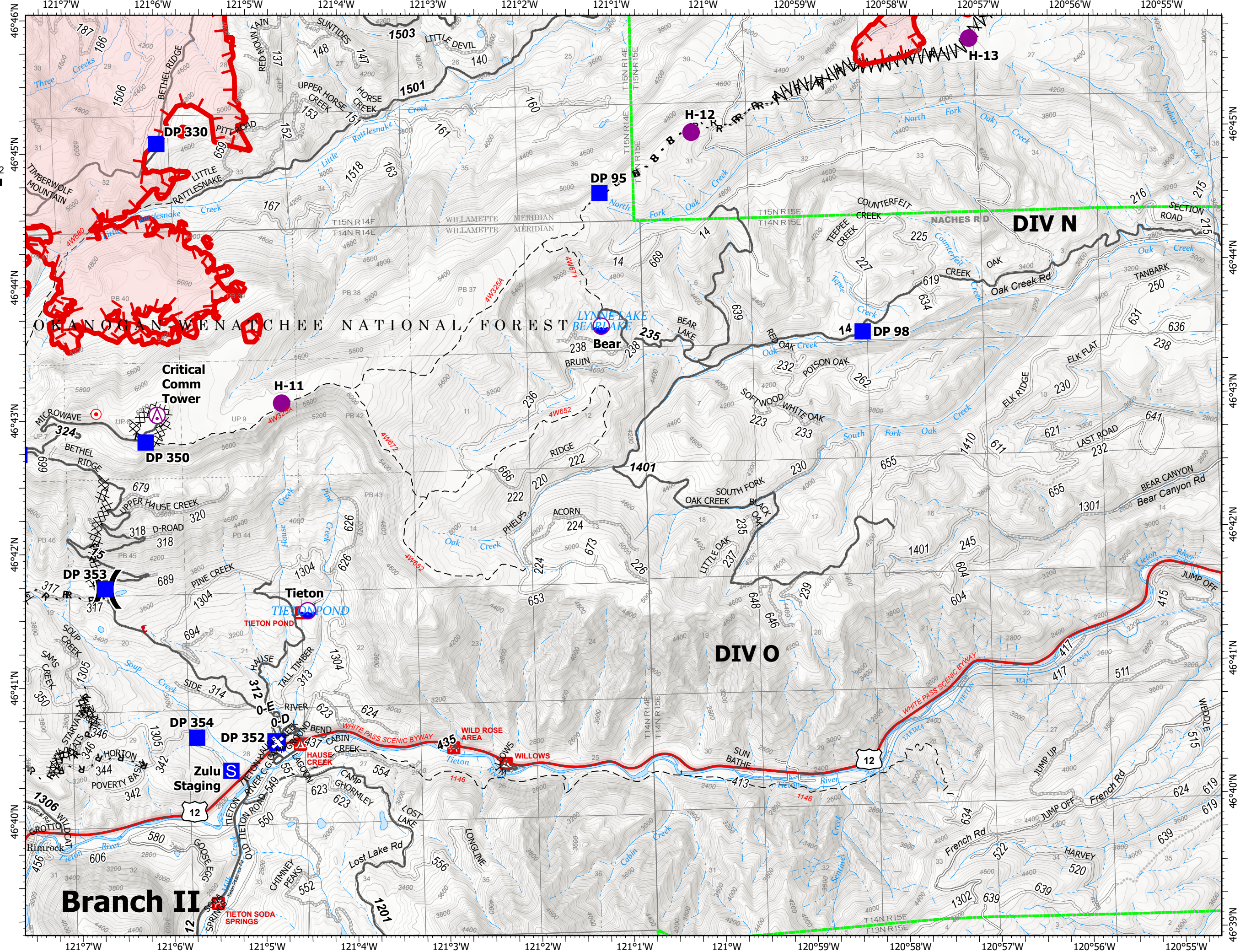
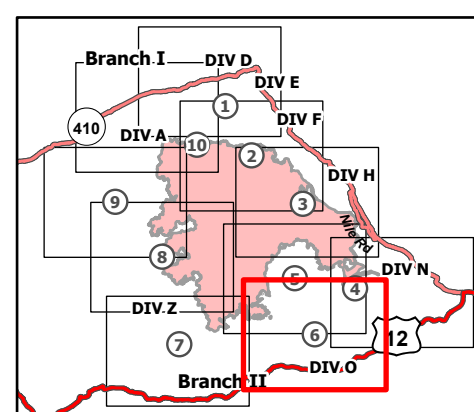
8/27/21

75,055 acres at 8/26/2021 1800

Page 6 of 10



- Aerial Hazard
- Dip Site
- Helispot
- Division Break
- Drop Point
- Closure
- Staging Area
- Hot Spot - Spot Fire
- Water Source
- Completed Dozer Line
- Completed Fuel Break
- Completed Hand Line
- Completed Road as Line
- Fence
- Other
- Fire Edge
- Administrative FS Boundary
- Wildfire Daily Fire Perimeter



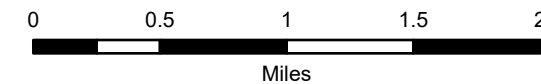
IAP Map

Schneider Springs
WA-OWF-000453

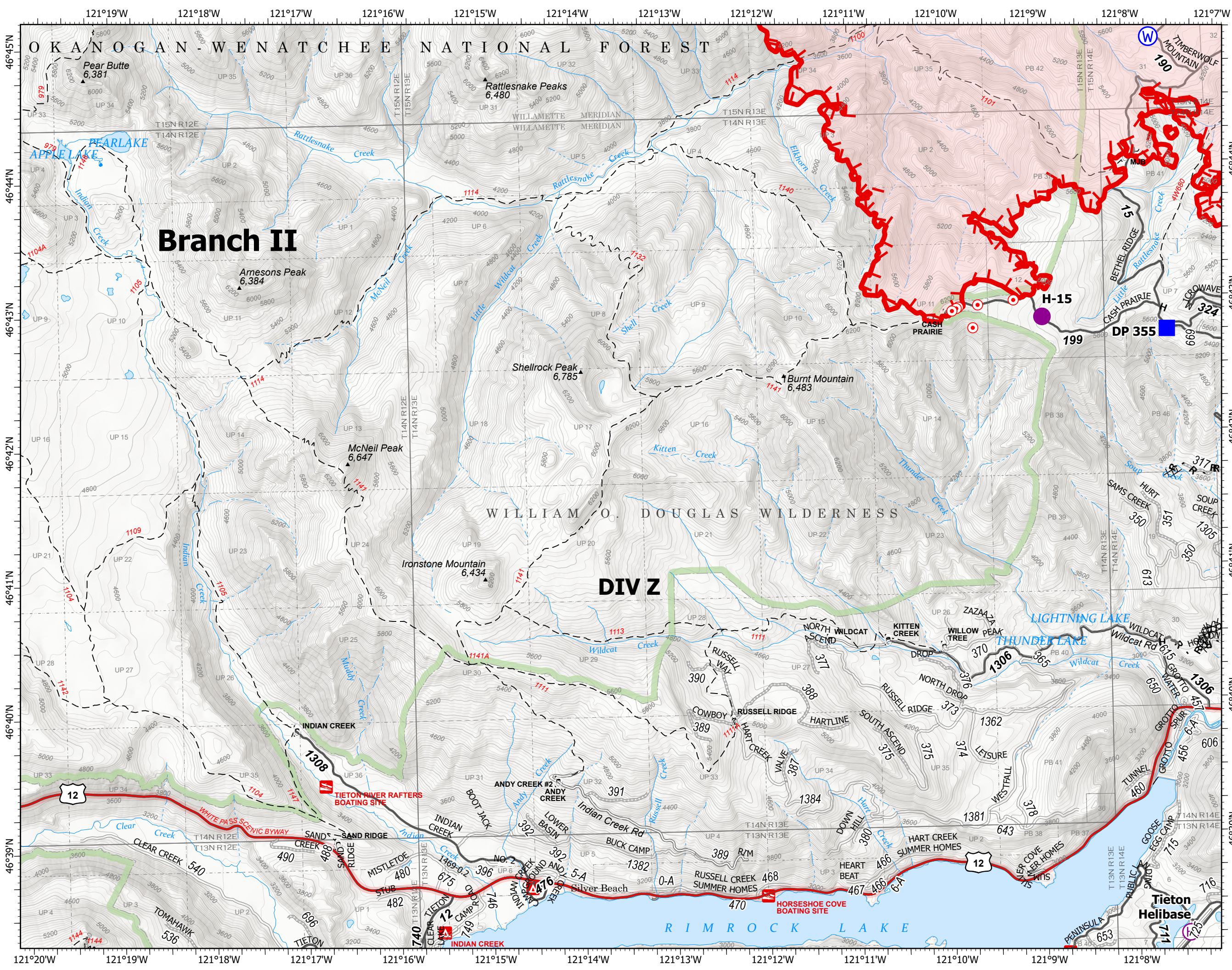
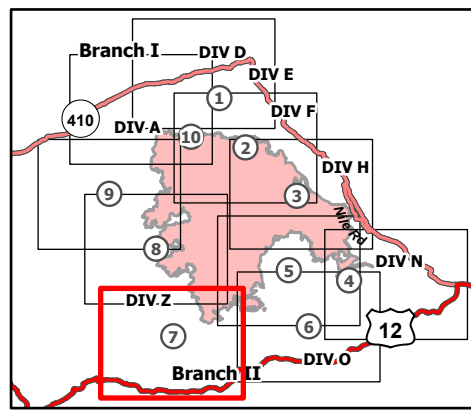
8/27/21

75,055 acres at 8/26/2021 1800

Page 7 of 10



- Helispot
- ⊕ Helibase
-) Division Break
- Drop Point
- ⊙ Hot Spot - Spot Fire
- ⊙ Water Source
- ×× Completed Dozer Line
- H Completed Hand Line
- R Completed Road as Line
- Other
- ┌ Fire Edge
- ▭ Administrative FS Boundary
- ▭ FS Wilderness Boundary
- ▭ Wildfire Daily Fire Perimeter



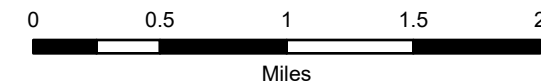
IAP Map

Schneider Springs
WA-OWF-000453

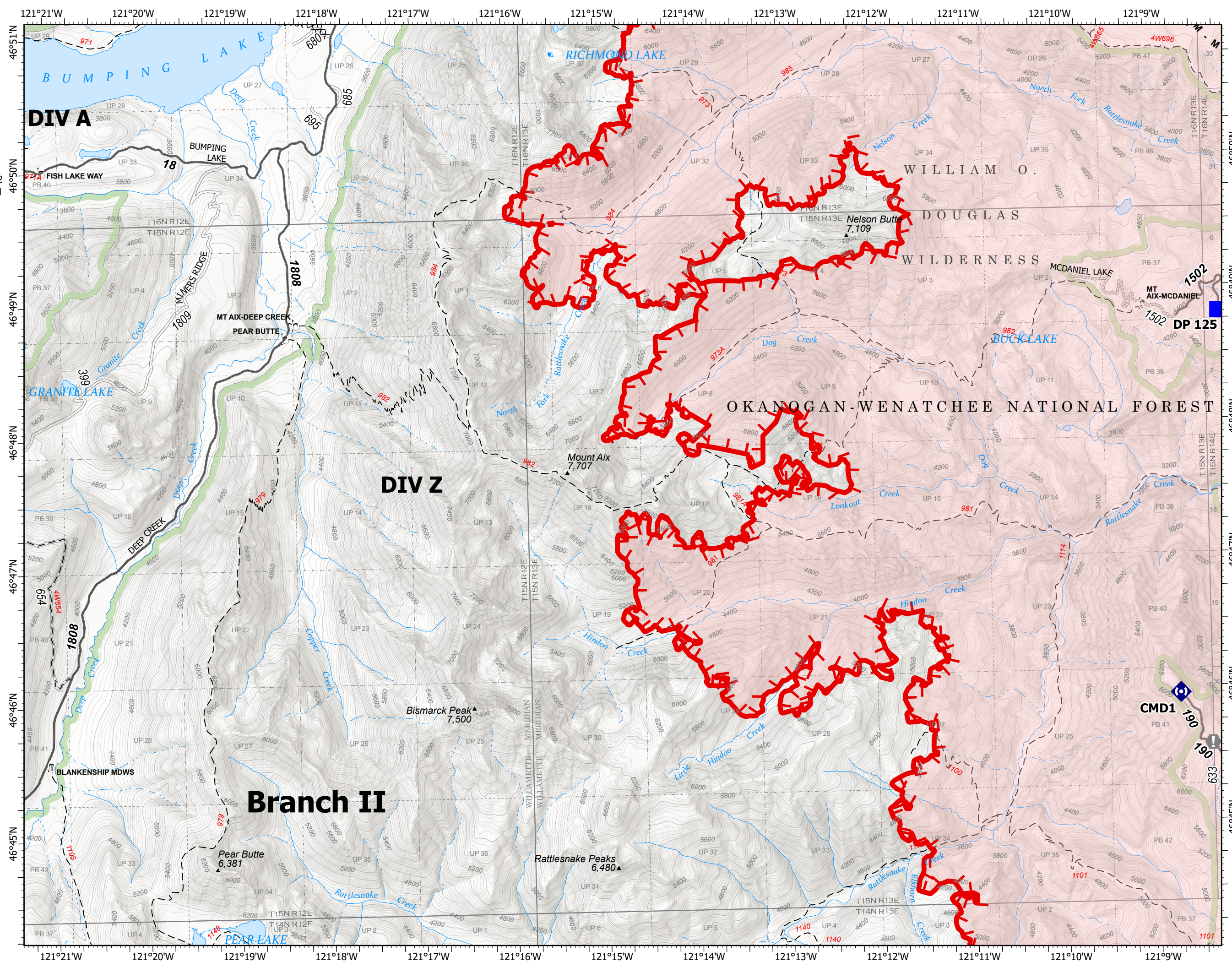
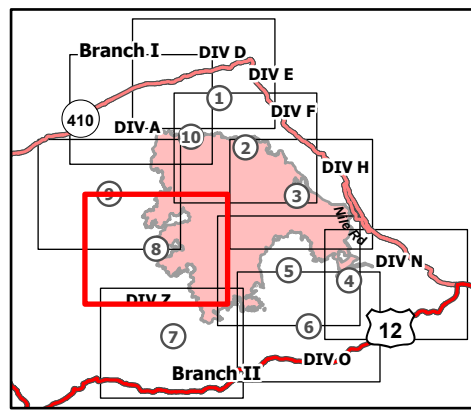
8/27/21

75,055 acres at 8/26/2021 1800

Page 8 of 10



- Drop Point
- Value at Risk
- Repeater
- Completed Dozer Line
- Completed Mixed Construction Line
- Completed Road as Line
- Fire Edge
- Administrative FS Boundary
- FS Wilderness Boundary
- Wildfire Daily Fire Perimeter



8/26/2021 2214
Acres from IR
North American 1983 Datum.
Lat/Long Grid



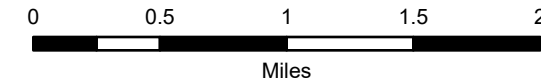
IAP Map

Schneider Springs
WA-OWF-000453

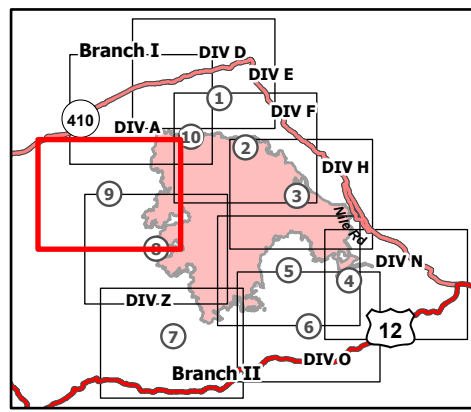
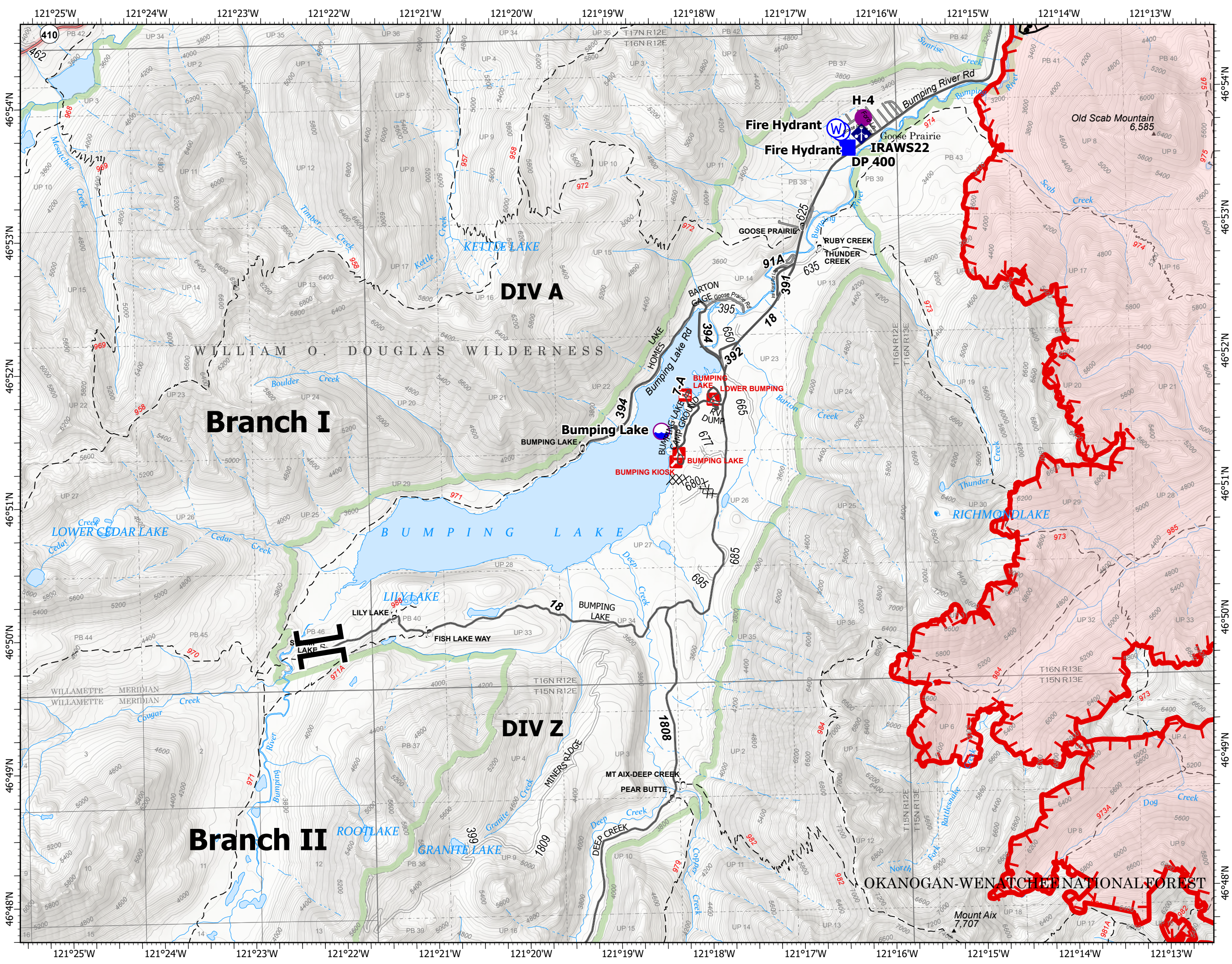
8/27/21

75,055 acres at 8/26/2021 1800

Page 9 of 10



- Dip Site
- Helispot
- Branch Break
- Drop Point
- Mobile Weather Unit
- Water Source
- Completed Burnout
- Completed Dozer Line
- Fire Edge
- Administrative FS Boundary
- FS Wilderness Boundary
- Wildfire Daily Fire Perimeter



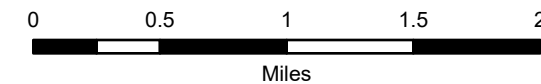
IAP Map

Schneider Springs
WA-OWF-000453

8/27/21

75,055 acres at 8/26/2021 1800

Page 10 of 10



- Dip Site
- Helispot
- Division Break
- Drop Point
- Closure
- Lookout
- Value at Risk
- Bridge
- Mobile Weather Unit
- Water Source
- Completed Burnout
- Fire Edge
- Administrative FS Boundary
- FS Wilderness Boundary
- Wildfire Daily Fire Perimeter

