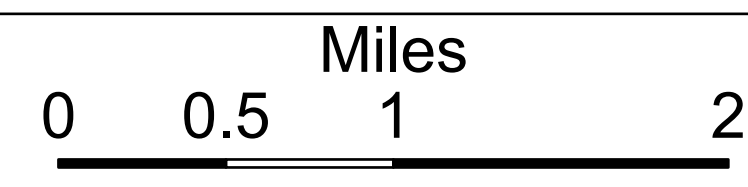


DIV Z/O

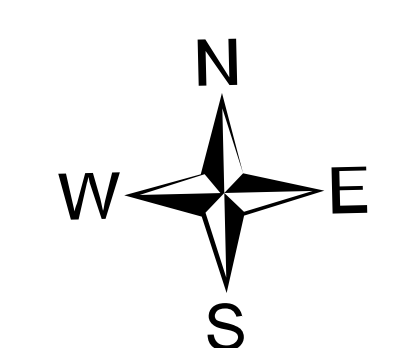
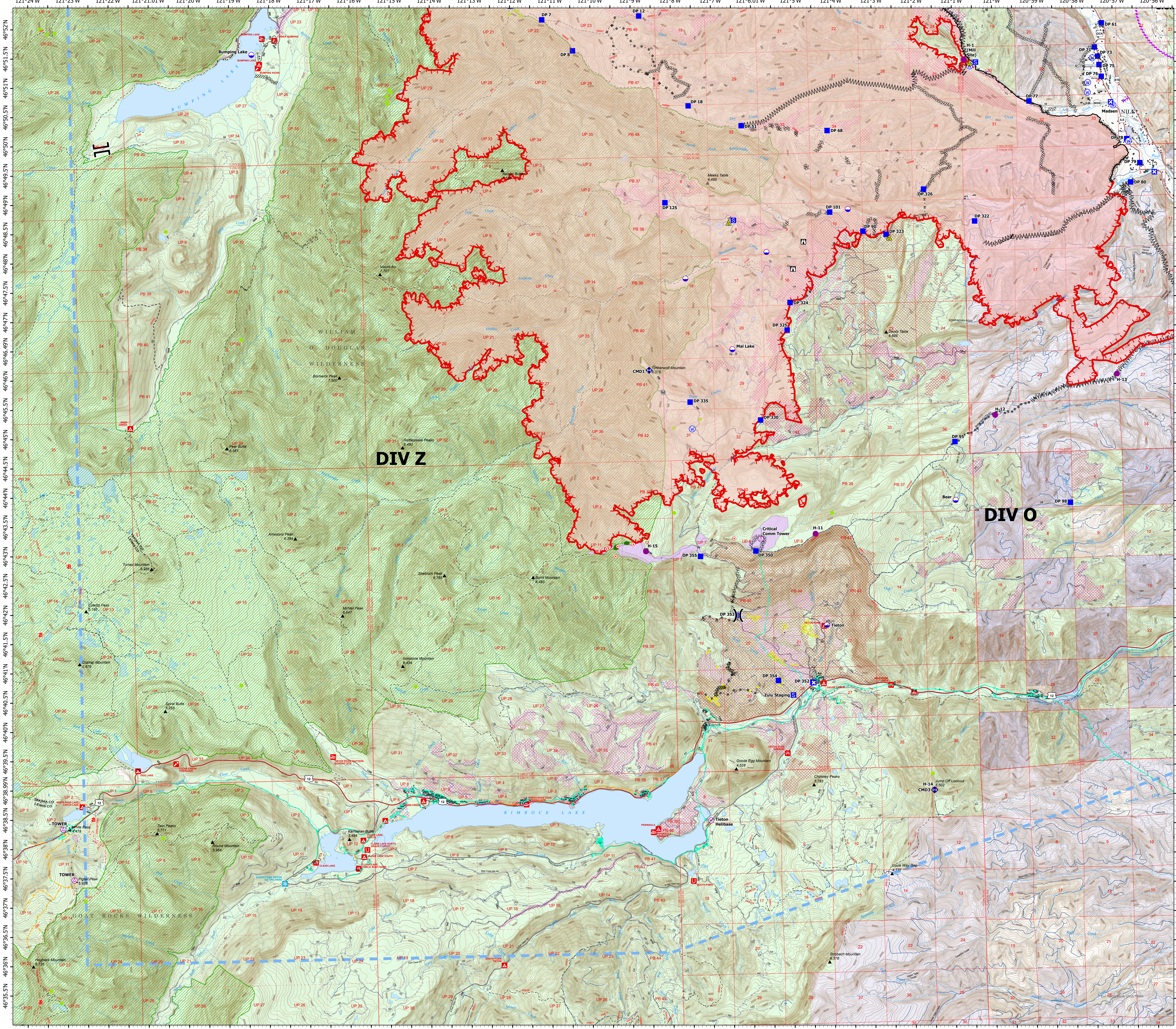
Ops Map

Schneider Springs
WA-OWF-000453
Division Map Book

75,055 acres at 8/26/2021 1800



- Aerial Hazard
- Dip Site
- Helispot
- Helibase
- Division Break
- Branch Break
- Drop Point
- Closure
- Staging Area
- Lookout
- Hot Spot - Spot Fire
- Value at Risk
- Repeater
- Safety Zone
- Water Source
- Wildfire Daily Fire Perimeter
- Structures
- Seed Trees
- Whitebark Pine Trees
- African Wiregrass
- Whitebark Pine Polygons
- Above Ground Power Lines
- Below Ground Power Lines
- Campground
- Group Campground
- Picnic Site
- Boating Site
- Interpretive Site
- Snowpark
- State or PVT
- Federal Wilderness Boundary
- Forest Service Land
- State Public Lands
- Other State Lands
- Other Federal Lands
- Private; Local Government; Undesignated
- Fire Fuels Treatments
- Mechanical Fuels Treatments



PNW2
8/27/2021 0821
Acres from IR
North American 1983 Datum, Lat/Long
Grid

