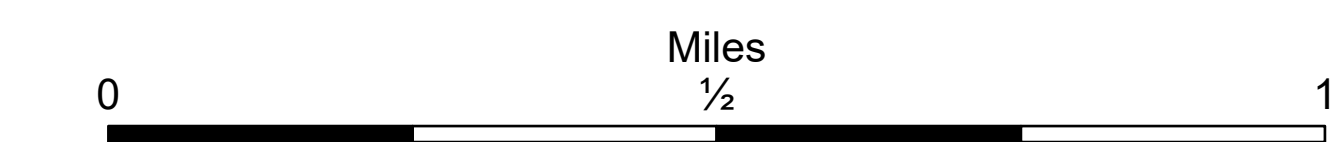


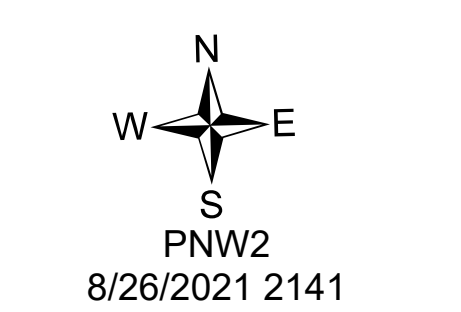
# DivF

Schneider Springs  
WA-OWF-000453  
8/27/21

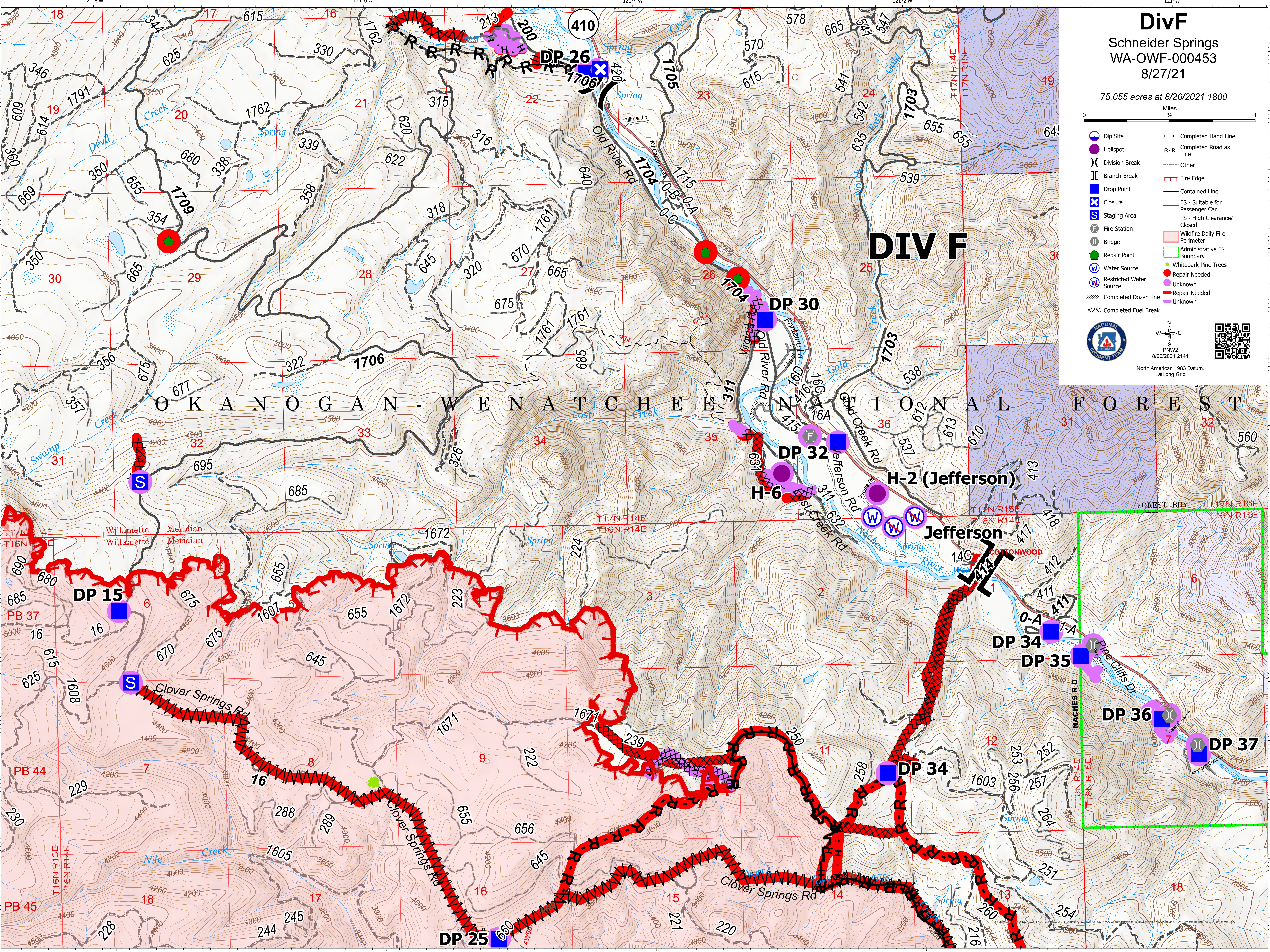
75,055 acres at 8/26/2021 1800



- Dip Site
- Hellspot
- Division Break
- Branch Break
- Drop Point
- Closure
- Staging Area
- Fire Station
- Bridge
- Repair Point
- Water Source
- Restricted Water Source
- Completed Dozer Line
- Completed Fuel Break
- Completed Hand Line
- Completed Road as Line
- Other
- Fire Edge
- Contained Line
- FS - Suitable for Passenger Car
- FS - High Clearance/Closed
- Wildfire Daily Fire Perimeter
- Administrative FS Boundary
- Whitebark Pine Trees
- Repair Needed
- Unknown
- Repair Needed
- Unknown



North American 1983 Datum, Lat,Long Grid



# DIV F

## OKANOGAN - WENATCHEE NATIONAL FOREST

### H-2 (Jefferson)

### Jefferson

### DP 36

### DP 37

### DP 34

### DP 35

### DP 34

### DP 25

### DP 34

### DP 32

### DP 30

### DP 26

### DP 15

### DP 29

### DP 30

### DP 31

### DP 32

### DP 33

### DP 34

### DP 35

### DP 36

### DP 37

### DP 38

### DP 39

### DP 40

### DP 41

### DP 42

### DP 43

### DP 44

### DP 45

### DP 46

### DP 47

### DP 48

### DP 49

### DP 50

### DP 51

### DP 52

### DP 53

### DP 54

### DP 55

### DP 56

### DP 57

### DP 58

### DP 59

### DP 60

### DP 61

### DP 62

### DP 63

### DP 64

### DP 65

### DP 66

### DP 67

### DP 68

### DP 69

### DP 70

### DP 71

### DP 72

### DP 73

### DP 74

### DP 75

### DP 76

### DP 77

### DP 78

### DP 79

### DP 80

### DP 81

### DP 82

### DP 83

### DP 84

### DP 85

### DP 86

### DP 87

### DP 88

### DP 89

### DP 90

### DP 91

### DP 92

### DP 93

### DP 94

### DP 95

### DP 96

### DP 97

### DP 98

### DP 99

### DP 100