

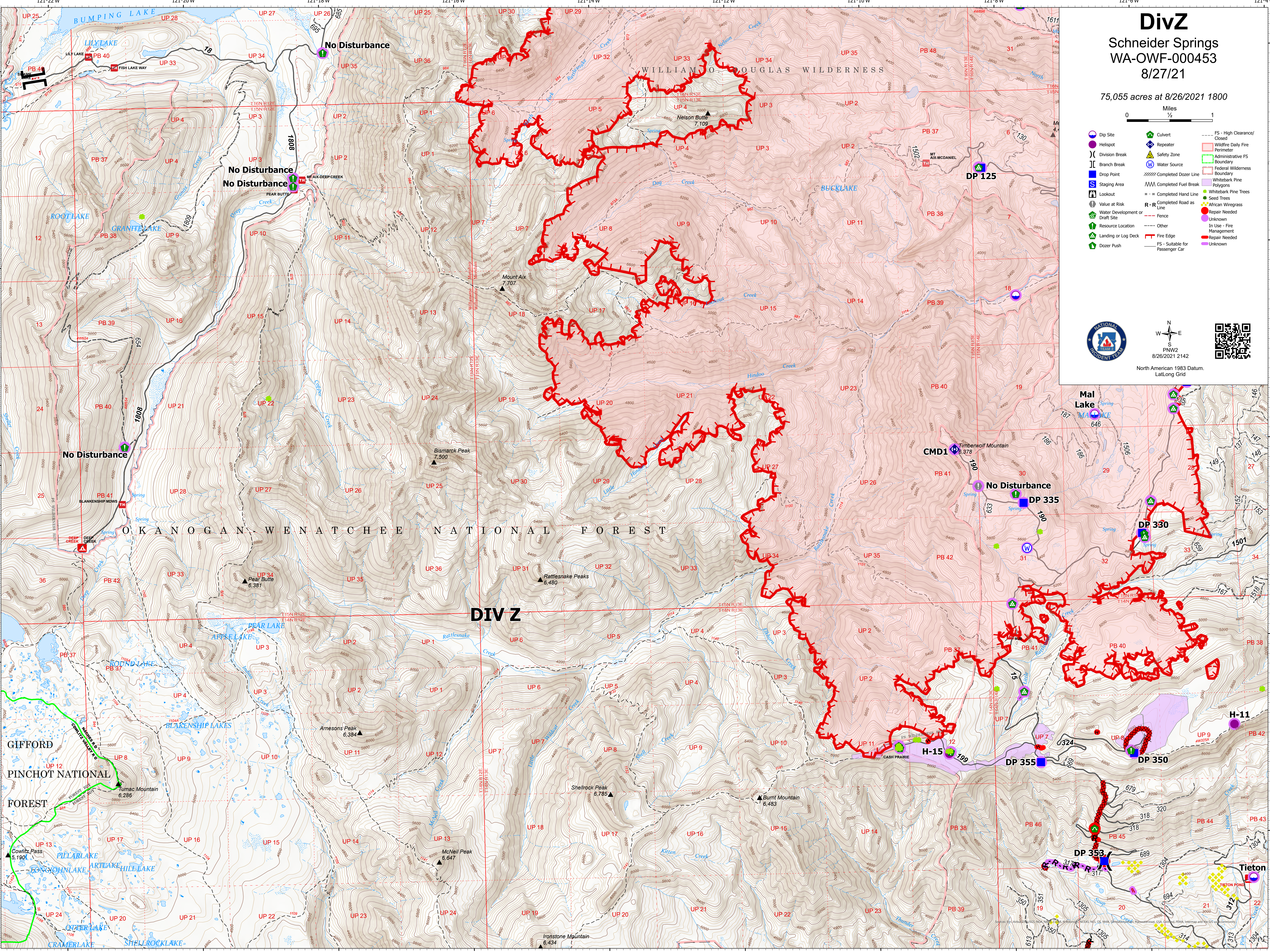
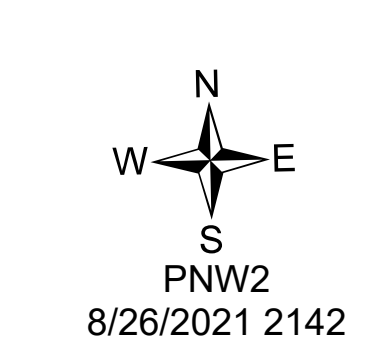
DivZ

Schneider Springs WA-OWF-000453 8/27/21

75,055 acres at 8/26/2021 1800

0 Miles
1/2 1

- Dip Site
- Helispot
- Division Break
- Branch Break
- Staging Area
- Lookout
- Value at Risk
- Water Development or Draft Site
- Resource Location
- Landing or Log Deck
- Dozer Push
- Culvert
- Repeater
- Safety Zone
- Water Source
- Drop Point
- Completed Dozer Line
- Completed Fuel Break
- Completed Hand Line
- Completed Road as Line
- Fence
- Other
- Fire Edge
- FS - Suitable for Passenger Car
- FS - High Clearance/Closed
- Wildfire Daily Fire Perimeter
- Administrative FS Boundary
- Federal Wilderness Boundary
- Whitebark Pine Polygons
- Whitebark Pine Trees
- Seed Trees
- African Wiregrass
- Repair Needed
- Unknown
- In Use - Fire Management
- Repair Needed
- Unknown



GIFFORD
PINCHOT NATIONAL
FOREST

UP 12
UP 13
UP 17
UP 16
UP 15
UP 14
UP 13
UP 12
UP 11
UP 10
UP 9
UP 8

UP 9
UP 8
UP 7
UP 6
UP 5
UP 4
UP 3
UP 2
UP 1

DIV Z

121°22'W 121°20'W 121°18'W 121°16'W 121°14'W 121°12'W 121°10'W 121°8'W 121°6'W

46°50'N 46°48'N 46°46'N 46°44'N 46°42'N