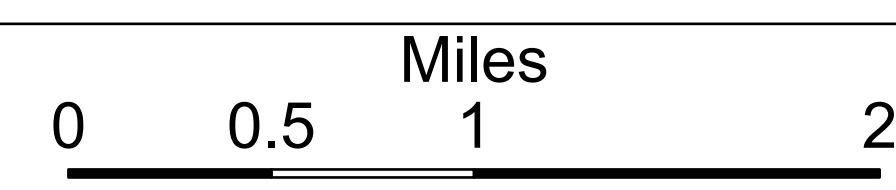


DIV O/Z Overview

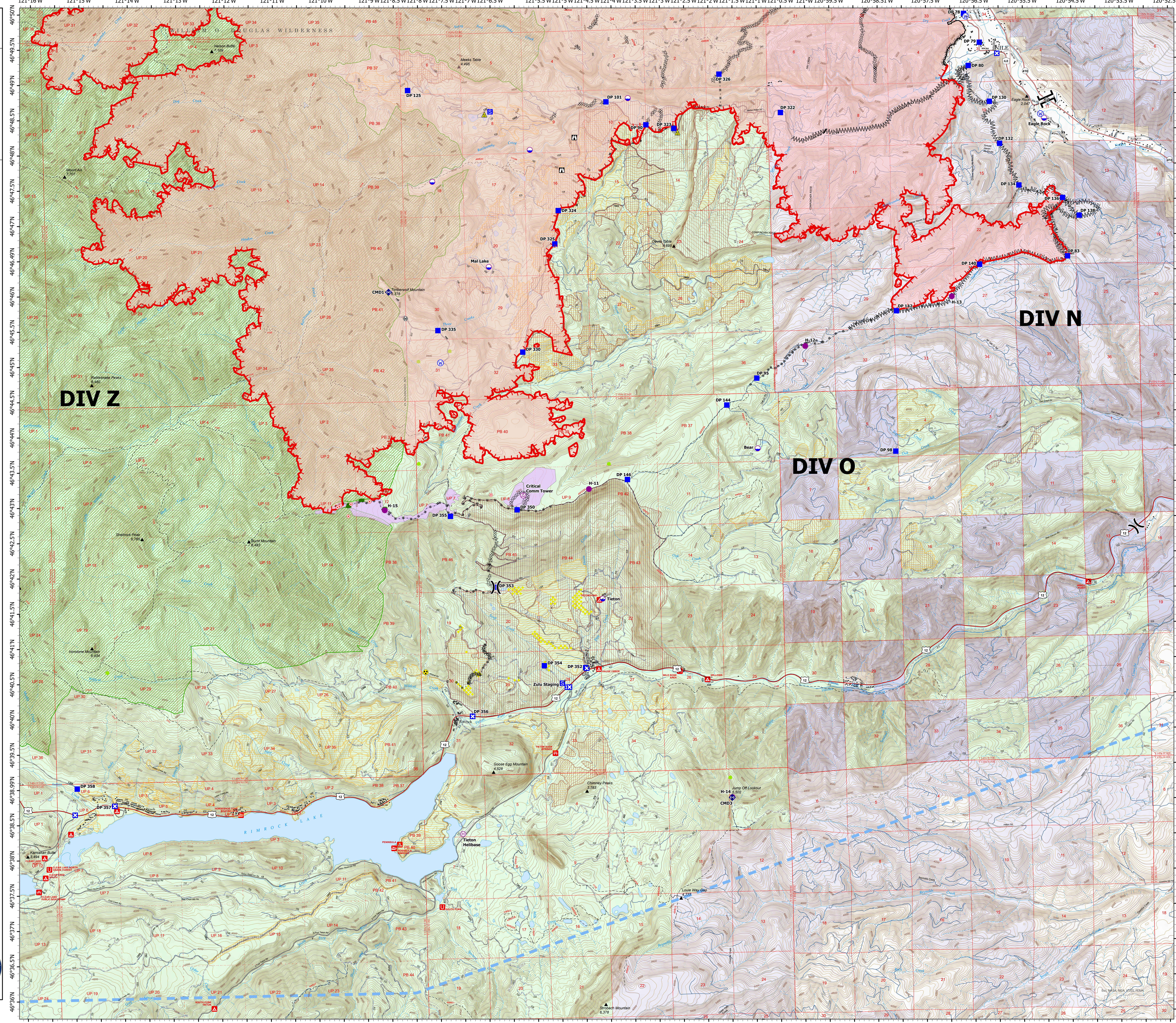
Structure

Schneider Springs
WA-OWF-000453
Division Map Book

76,764 acres at 8/27/2021 1630



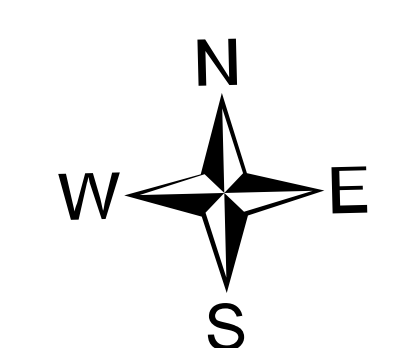
- Aerial Hazard
- Dip Site
- Helispot
- Helibase
- Division Break
- Branch Break
- Drop Point
- Closure
- Staging Area
- Lookout
- Hot Spot - Spot Fire
- Value at Risk
- Fire Station
- Repeater
- Safety Zone
- Hazard
- Water Source
- Wildfire Daily Fire Perimeter
- Structures
- Seed Trees
- Whitebark Pine Trees
- African Wiregrass
- Whitebark Pine Polygons
- Campground
- Group Campground
- Picnic Site
- Boating Site
- Trail
- Tunnel; Bridge
- Primary Highway
- Secondary Highway
- Paved Roads
- Dirt (Not Paved)
- Paved Road
- Gravel Road
- Dirt Roads
- Unimproved Roads
- Closed Roads
- State or PVT
- Federal Wilderness Boundary
- Forest Service Land
- State Public Lands
- Other State Lands
- Private; Local Government; Undesignated
- Fire
- Mechanical



DIV Z

DIV N

DIV O



PNW2
8/27/2021 2236
Acres from IR
North American 1983 Datum, Lat/Long
Grid

