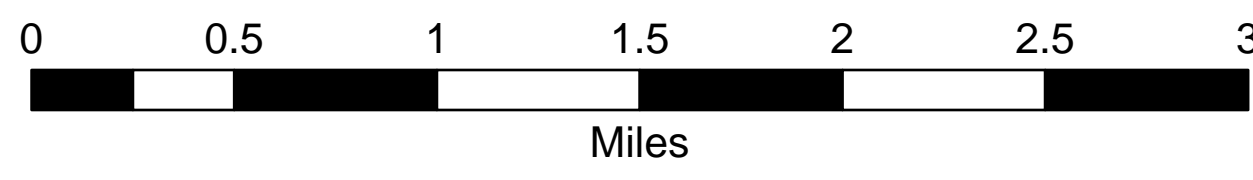


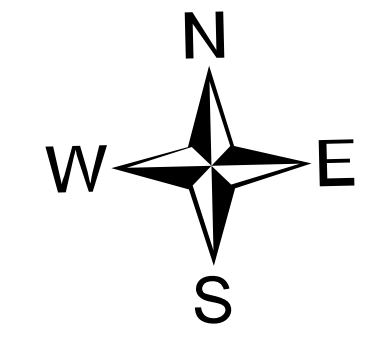
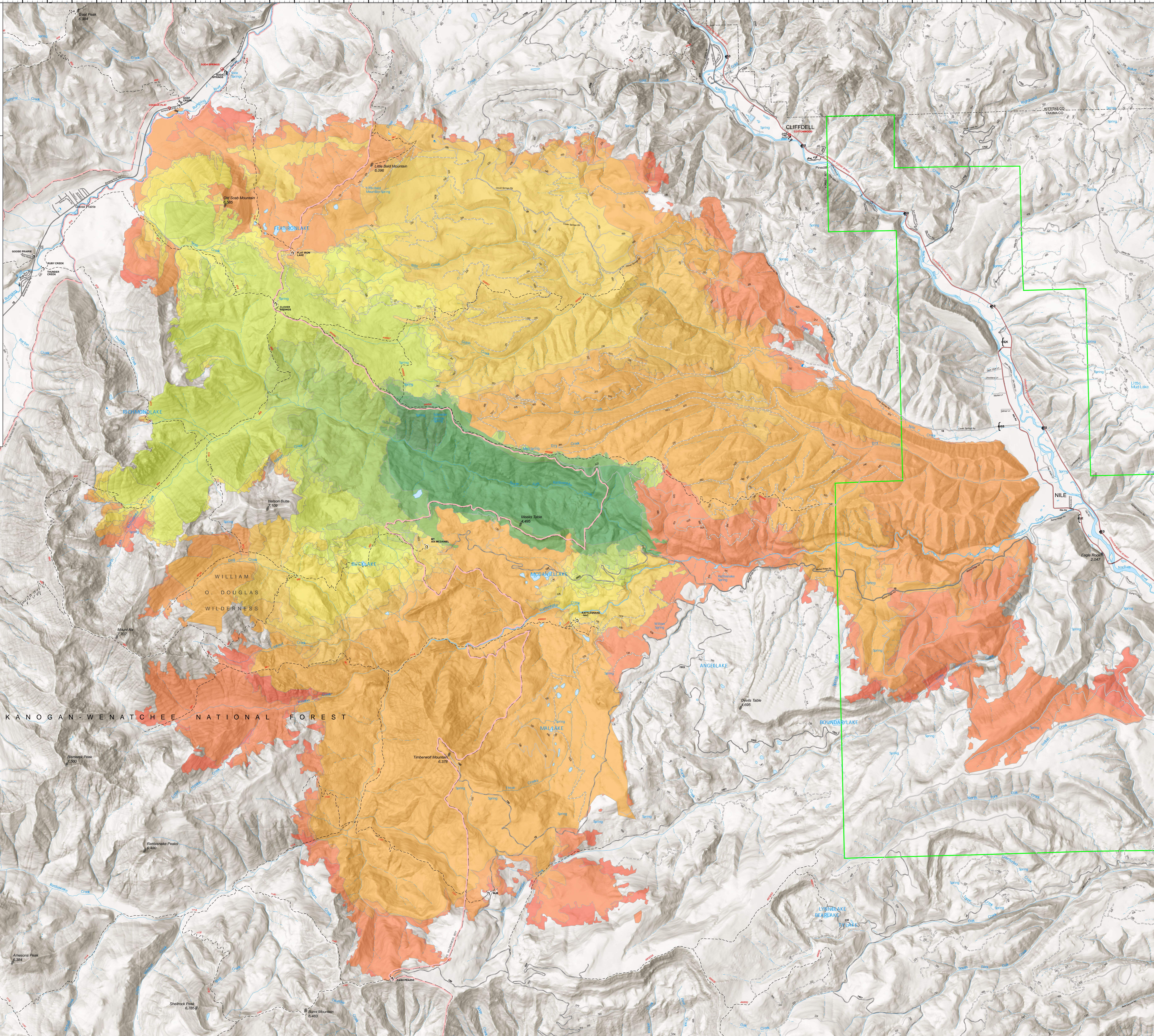
# Progression Map

Schneider Springs  
WA-OWF-000453  
8/28/21

76,764 acres at 8/27/2021 1630



08/05/2021	326 ac growth	326 ac total
08/07/2021	2756 ac growth	3082 ac total
08/08/2021	1051 ac growth	4133 ac total
08/09/2021	88 ac growth	4221 ac total
08/10/2021	1670 ac growth	5890 ac total
08/11/2021	1257 ac growth	7148 ac total
08/12/2021	6517 ac growth	13665 ac total
08/13/2021	1377 ac growth	15042 ac total
08/14/2021	1472 ac growth	16514 ac total
08/15/2021	2318 ac growth	18832 ac total
08/16/2021	9509 ac growth	28341 ac total
08/17/2021	3520 ac growth	31861 ac total
08/18/2021	24538 ac growth	56399 ac total
08/19/2021	8041 ac growth	64440 ac total
08/26/2021	10448 ac growth	74888 ac total
08/27/2021	1854 ac growth	76741 ac total



PNW2  
8/28/2021 0826  
Acres from IR  
North American 1983 Datum,  
Lat,Long Grid

