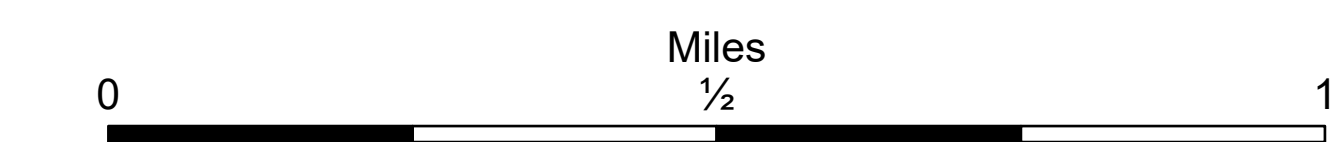


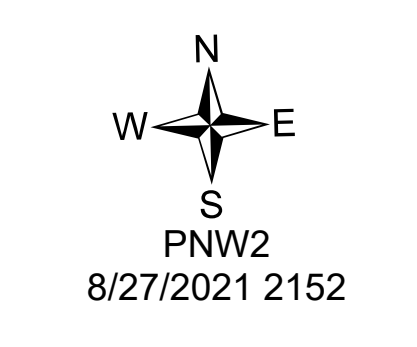
Repair Map DivD

Schneider Springs
WA-OWF-000453
8/28/21

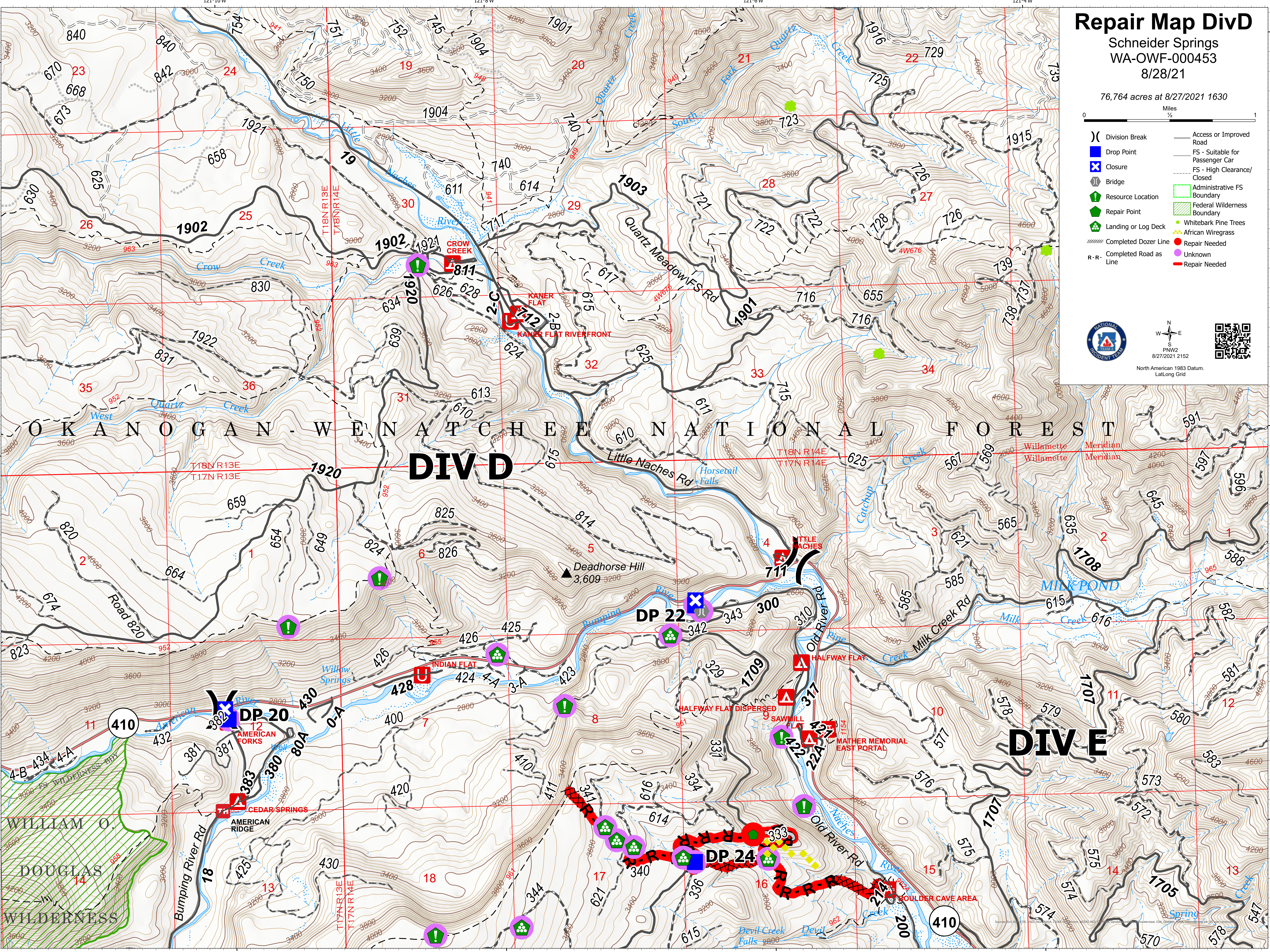
76,764 acres at 8/27/2021 1630



- () Division Break
- Drop Point
- Closure
- Bridge
- Resource Location
- Repair Point
- Landing or Log Deck
- Completed Dozer Line
- Completed Road as Line
- Access or Improved Road
- FS - Suitable for Passenger Car
- FS - High Clearance/Closed
- Administrative FS Boundary
- Federal Wilderness Boundary
- Whitebark Pine Trees
- African Wiregrass
- Repair Needed
- Unknown
- Repair Needed



North American 1983 Datum, Lat,Long Grid



OKANOGAN - WENATCHEE NATIONAL FOREST

DIV D

DIV E

WILLIAM O. DOUGLAS WILDERNESS

121°10'W 121°8'W 121°6'W 121°4'W