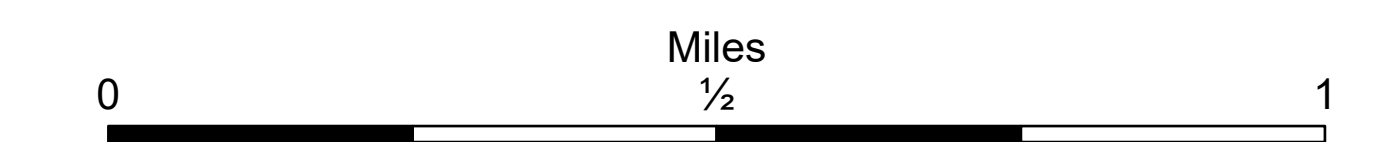


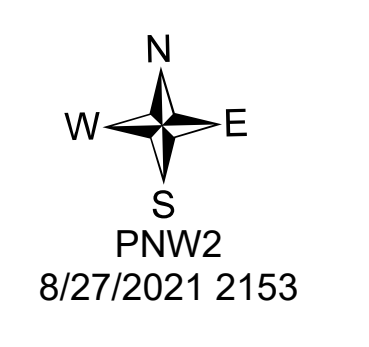
# Repair Map Dive

Schneider Springs  
WA-OWF-000453  
8/28/21

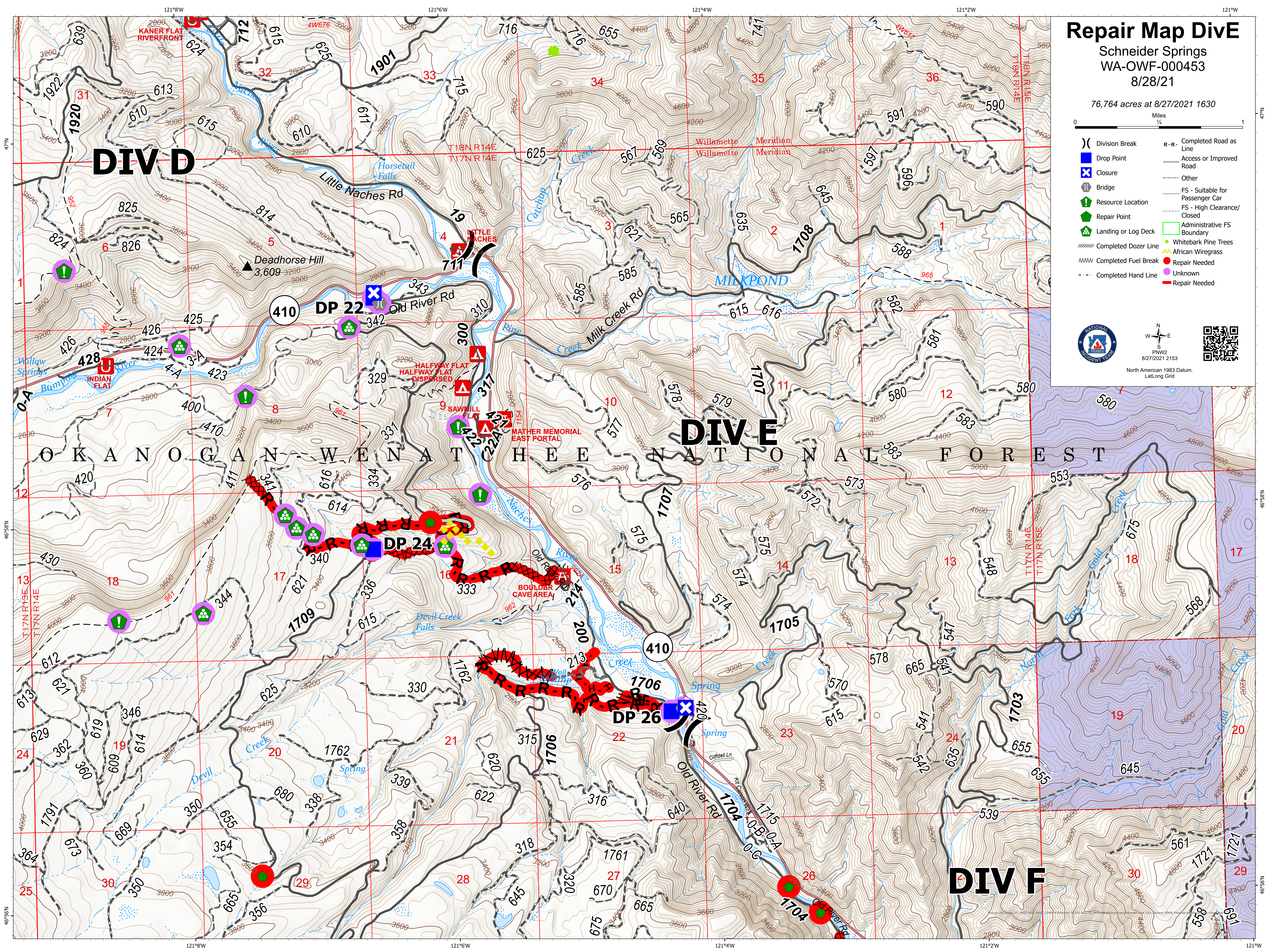
76,764 acres at 8/27/2021 1630



- ( ) Division Break
- Drop Point
- Closure
- Bridge
- Resource Location
- Repair Point
- Landing or Log Deck
- Completed Dozer Line
- Completed Fuel Break
- Completed Hand Line
- R-R - Completed Road as Line
- Access or Improved Road
- Other
- FS - Suitable for Passenger Car
- FS - High Clearance/Closed
- Administrative FS Boundary
- Whitebark Pine Trees
- African Wiregrass
- Repair Needed
- Unknown
- Repair Needed



North American 1983 Datum, Lat/Long Grid



## DIV D

## DIV E

## DIV F