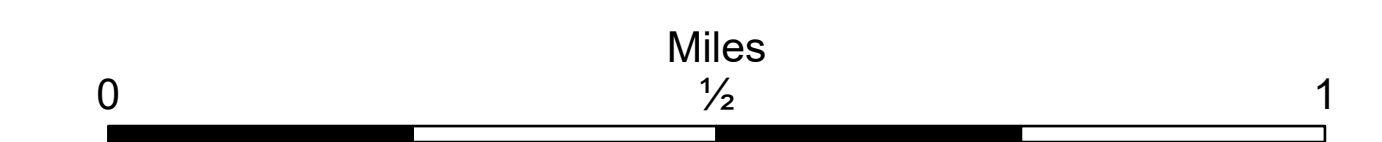


# Repair Map DivF

Schneider Springs  
WA-OWF-000453  
8/28/21

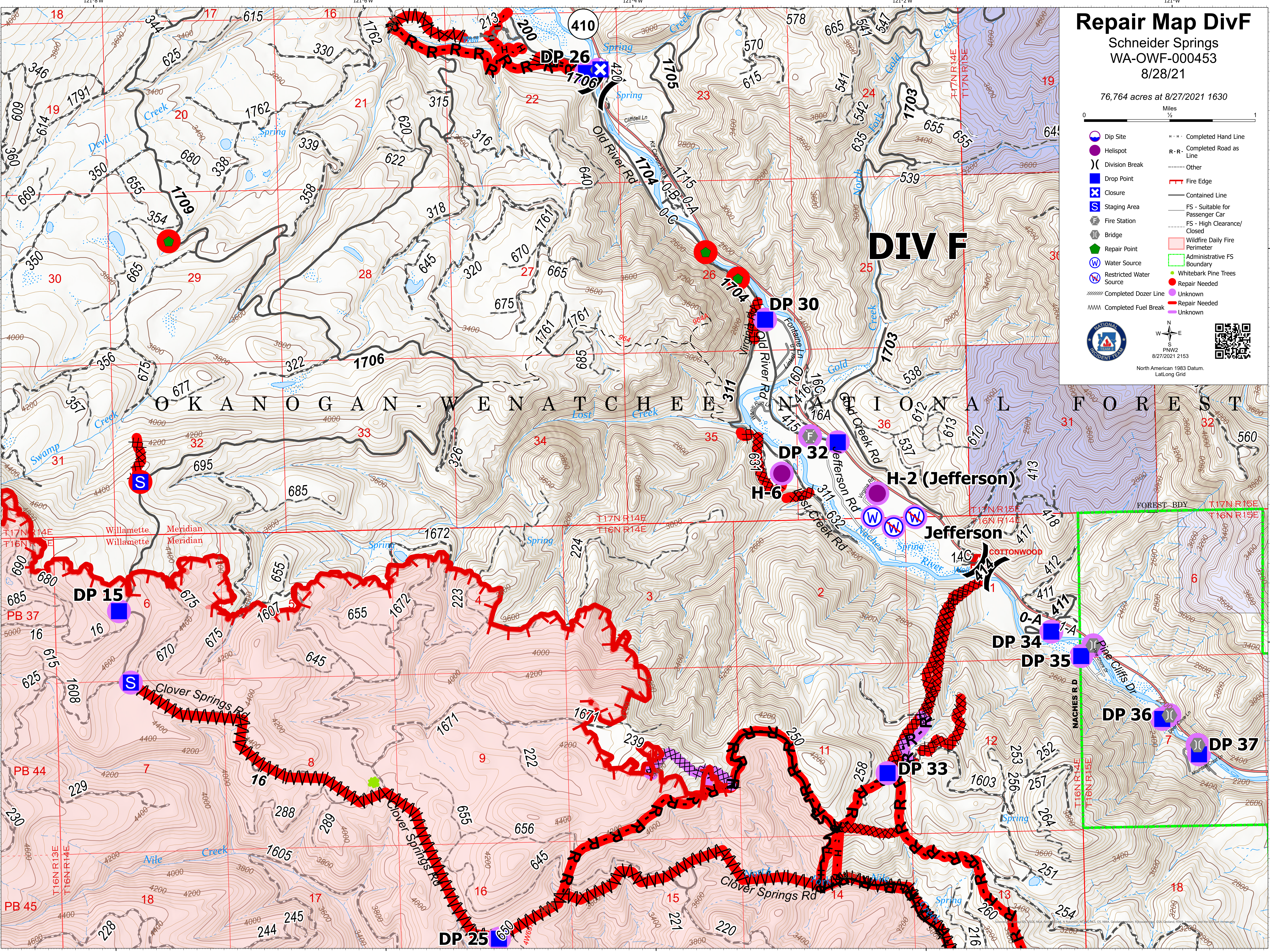
76,764 acres at 8/27/2021 1630



- Dip Site
- Helispot
- Division Break
- Drop Point
- Closure
- Staging Area
- Fire Station
- Bridge
- Repair Point
- Water Source
- Restricted Water Source
- Completed Dozer Line
- Completed Fuel Break
- Completed Hand Line
- Completed Road as Line
- Other
- Fire Edge
- Contained Line
- FS - Suitable for Passenger Car
- FS - High Clearance/Closed
- Wildfire Daily Fire Perimeter
- Administrative FS Boundary
- Whitebark Pine Trees
- Repair Needed
- Unknown
- Repair Needed
- Unknown



North American 1983 Datum, Lat/Long Grid



## DIV F

### H-2 (Jefferson)

### Jefferson

OKANOGAN - WENATCHEE NATIONAL FOREST

Map grid coordinates: 121°8'W to 121°2'W, 46°55'N to 46°50'N

Map labels: DP 15, DP 25, DP 26, DP 30, DP 32, DP 33, DP 34, DP 35, DP 36, DP 37, H-6, Jefferson, Old River Rd, Clover Springs Rd, Naches Rd, Pile Cliffs Dr, Cottonwood, Spring, Creek, Swamp, Fire Edge, Contained Line, FS - Suitable for Passenger Car, FS - High Clearance/Closed, Wildfire Daily Fire Perimeter, Administrative FS Boundary, Whitebark Pine Trees, Repair Needed, Unknown, Repair Needed, Unknown.