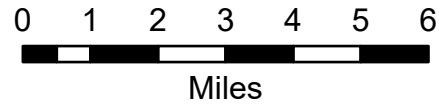


IAP Map Index

Schneider Springs
WA-OWF-000453

8/30/21

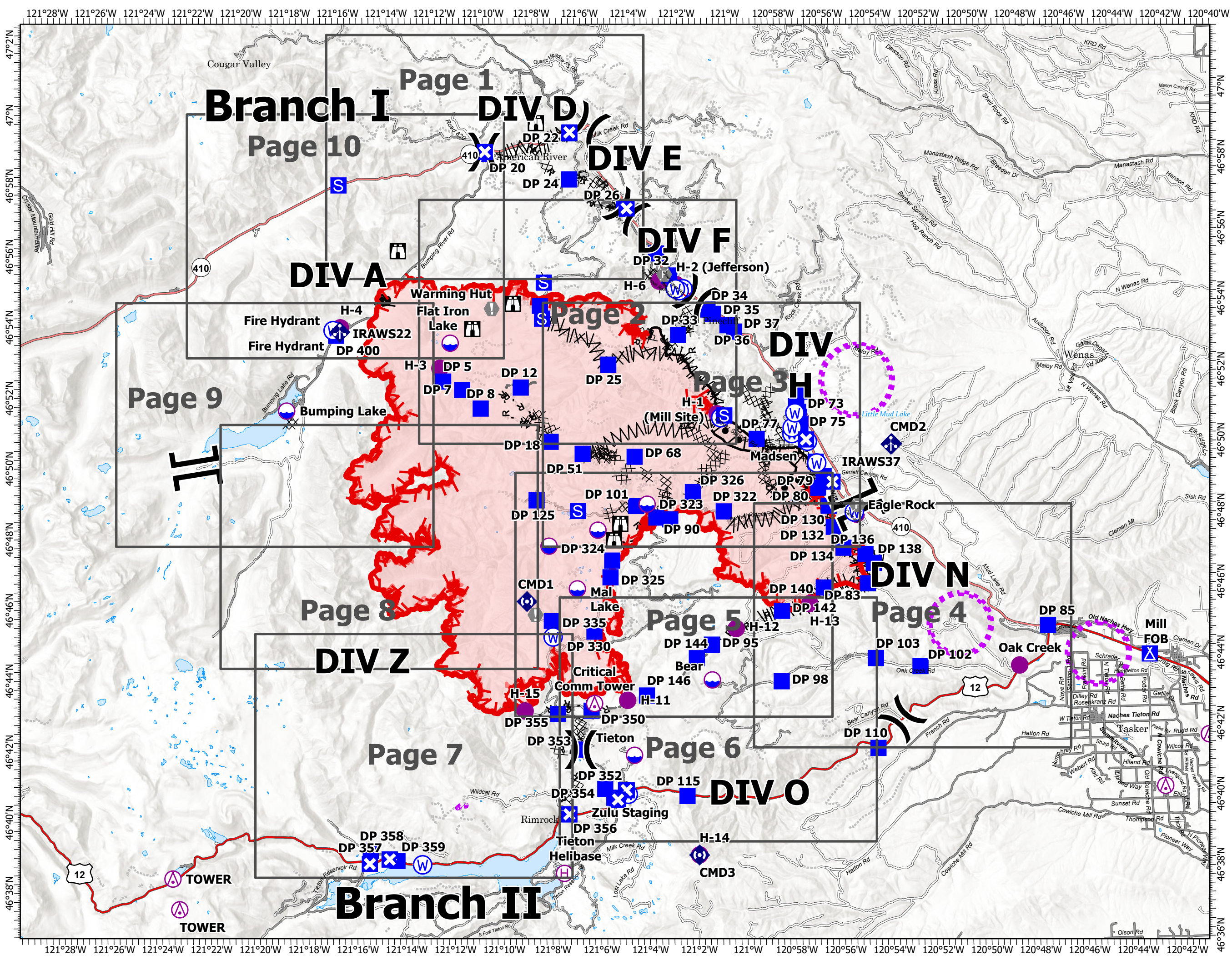
80,841 acres at 8/29/21 @ 1530



- Aerial Hazard
- Dip Site
- Helispot
- Helibase
- Division Break
- Branch Break
- Drop Point
- Closure
- Camp
- Staging Area
- Lookout
- Value at Risk
- Fire Station
- Mobile Weather Unit
- Repeater
- Water Source
- Restricted Water Source
- Completed Burnout
- Completed Dozer Line
- Completed Fuel Break
- Completed Hand Line
- Completed Mixed Construction Line
- Completed Road as Line
- Access or Improved Road
- Fence
- Other
- Aerial Hazard
- Route
- UAS Launch and Recovery Zone
- Fire Edge
- Contained Line
- Wildfire Daily Fire Perimeter
- Grid Index



PNW2
8/29/2021 2204
Acres from IR
North American 1983 Datum.
Lat/Long Grid



46°36'N
120°42'W

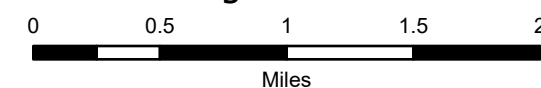
IAP Map

Schneider Springs
WA-OWF-000453

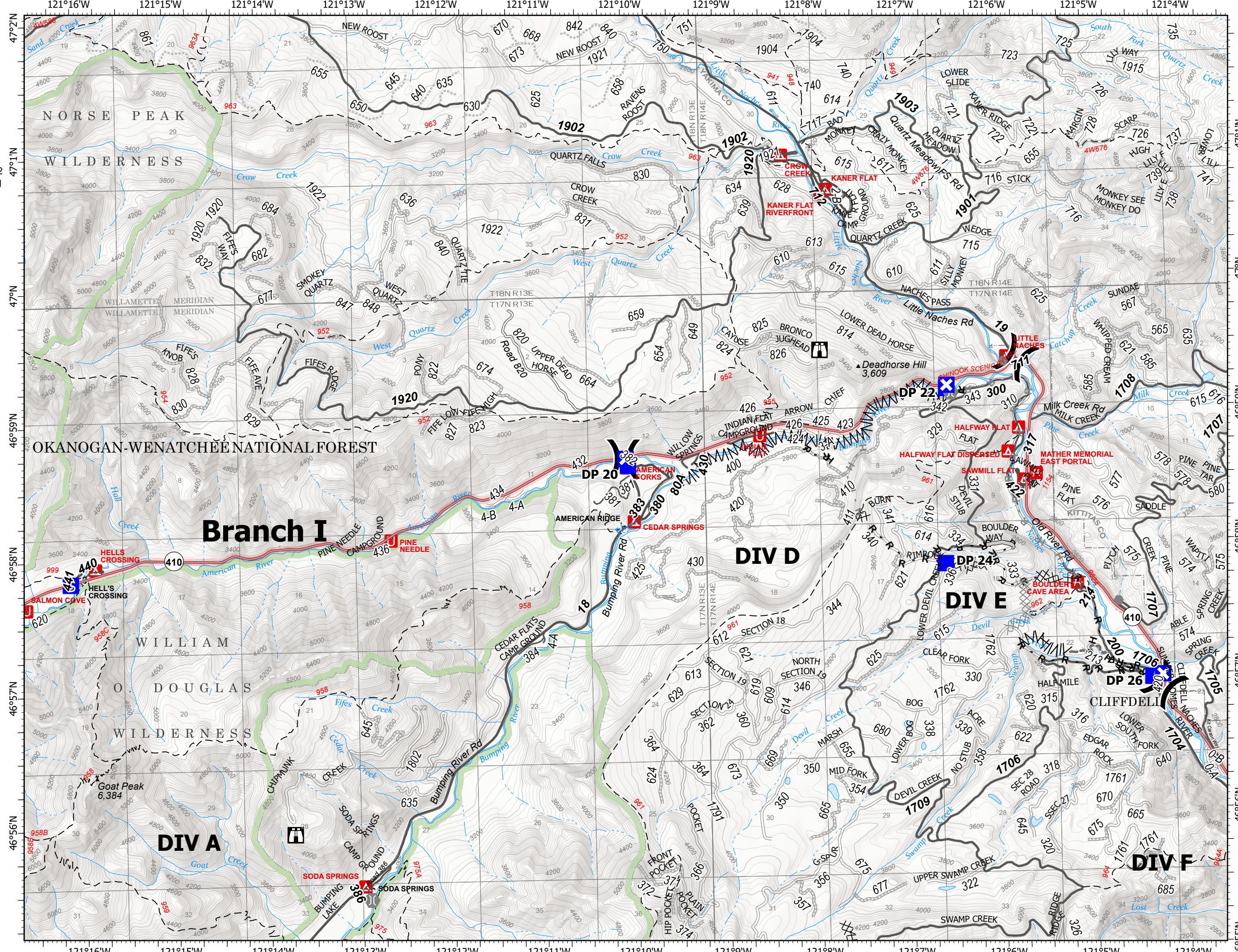
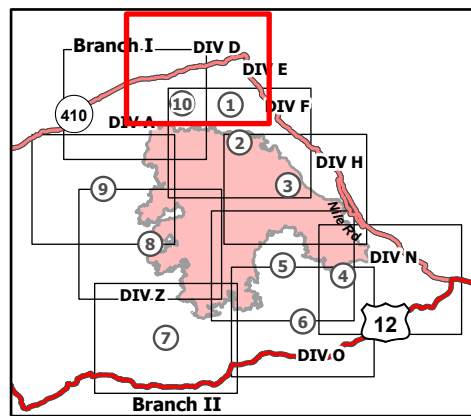
8/30/21

80,841 acres at 8/29/21 @ 1530

Page 1 of 10



- () Division Break
- Drop Point
- ⊠ Closure
- Ⓢ Staging Area
- 🏠 Lookout
- Other
- 🌉 Bridge
- Completed Dozer Line
- Completed Fuel Break
- H - Completed Hand Line
- R - Completed Road as Line
- Planned Dozer Line
- H - Planned Hand Line
- R - Planned Road as Line
- Access or Improved Road
- Other
- 🔴 Fire Edge
- 🟢 Administrative FS Boundary
- 🟡 FS Wilderness Boundary



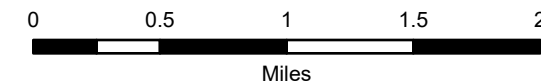
IAP Map

Schneider Springs
WA-OWF-000453

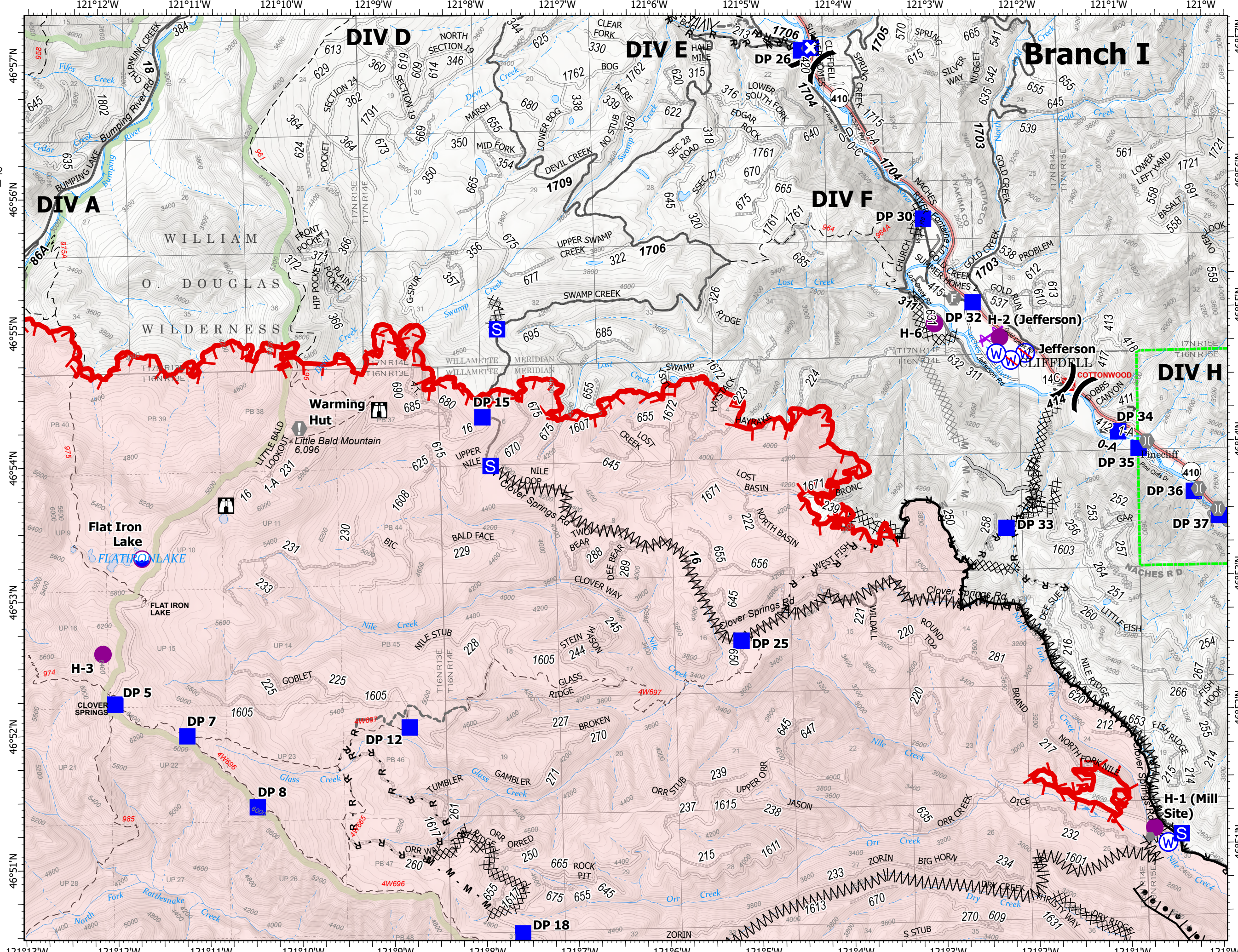
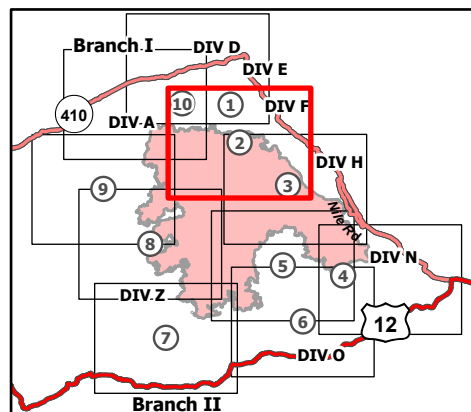
8/30/21

80,841 acres at 8/29/21 @ 1530

Page 2 of 10



- Dip Site
- Helispot
- Division Break
- Drop Point
- Closure
- Staging Area
- Lookout
- Value at Risk
- Other
- Fire Station
- Bridge
- Water Source
- Restricted Water Source
- Completed Burnout
- Completed Dozer Line
- Completed Fuel Break
- Completed Hand Line
- Completed Mixed Construction Line
- Completed Road as Line
- Planned Dozer Line
- Planned Mixed Construction Line
- Access or Improved Road
- Other
- Aerial Hazard
- Fire Edge
- Contained Line
- Administrative FS Boundary
- FS Wilderness Boundary
- Wildfire Daily Fire Perimeter



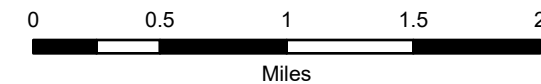
IAP Map

Schneider Springs
WA-OWF-000453

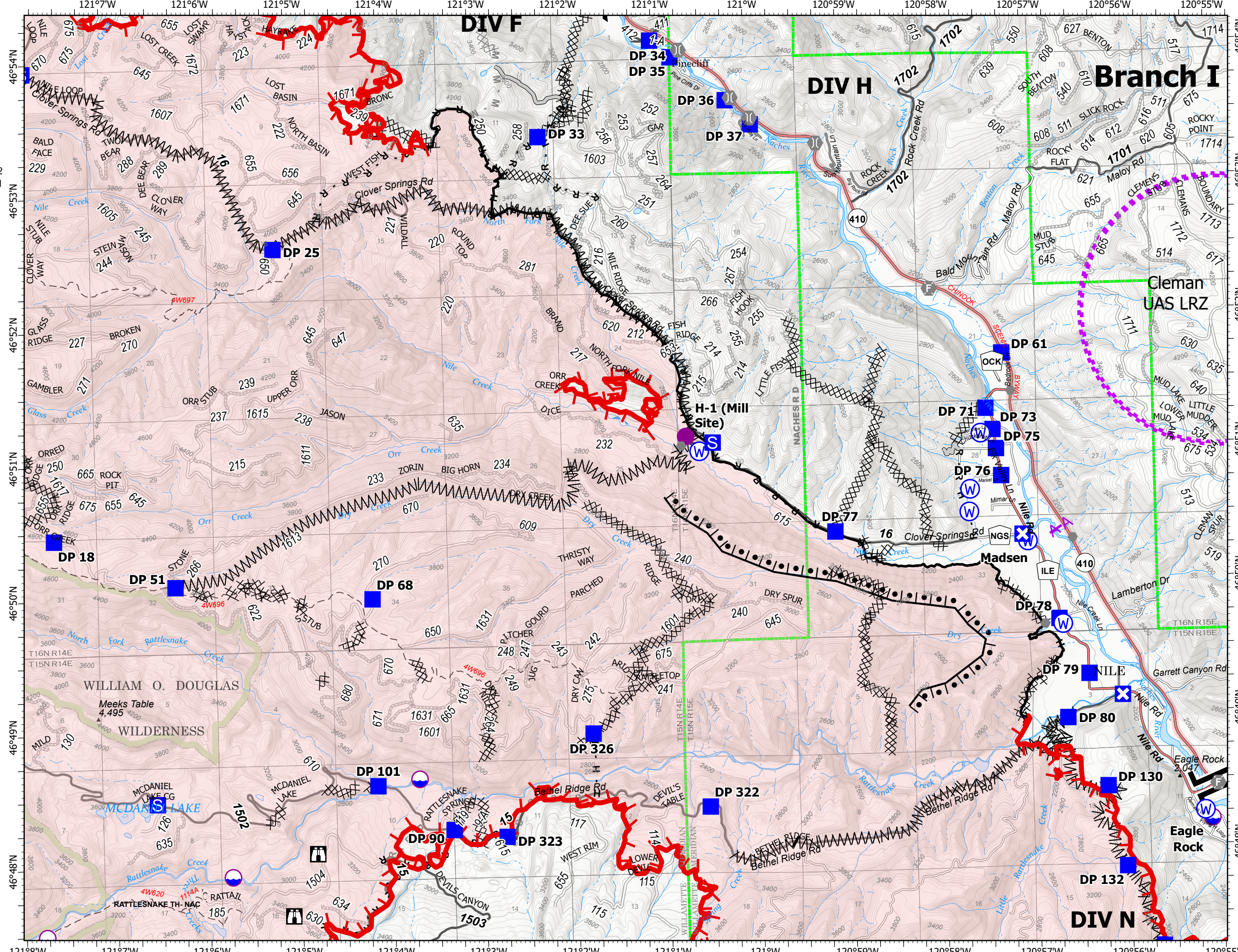
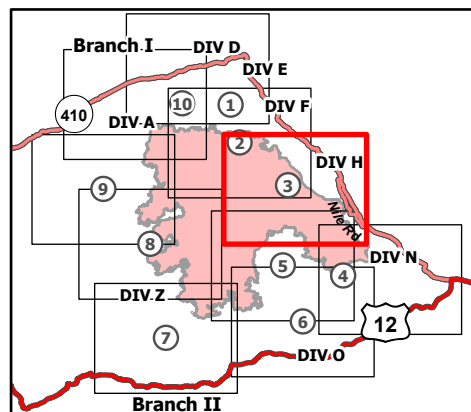
8/30/21

80,841 acres at 8/29/21 @ 1530

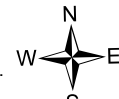
Page 3 of 10



- Dip Site
- Helispot
- Division Break
- Branch Break
- Drop Point
- Closure
- Staging Area
- Lookout
- Other
- Fire Station
- Bridge
- Water Source
- Completed Burnout
- Completed Dozer Line
- Completed Fuel Break
- Completed Hand Line
- Completed Mixed Construction Line
- Completed Road as Line
- Planned Dozer Line
- Planned Mixed Construction Line
- Planned Road as Line
- Planned Secondary Line
- Access or Improved Road
- Aerial Hazard
- UAS Launch and Recovery Zone
- Fire Edge
- Contained Line
- Administrative FS Boundary
- FS Wilderness Boundary
- Wildfire Daily Fire Perimeter



8/29/2021 2157
Acres from IR
North American 1983 Datum.
Lat/Long Grid



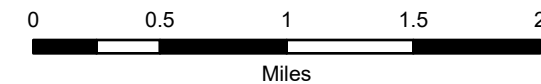
IAP Map

Schneider Springs
WA-OWF-000453

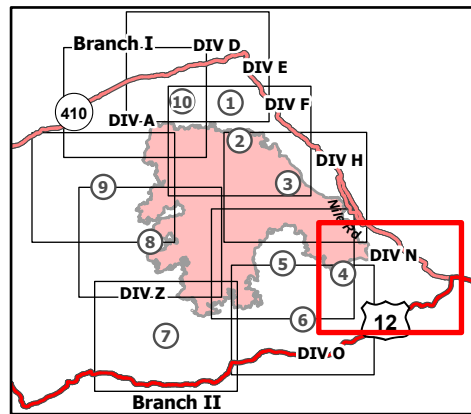
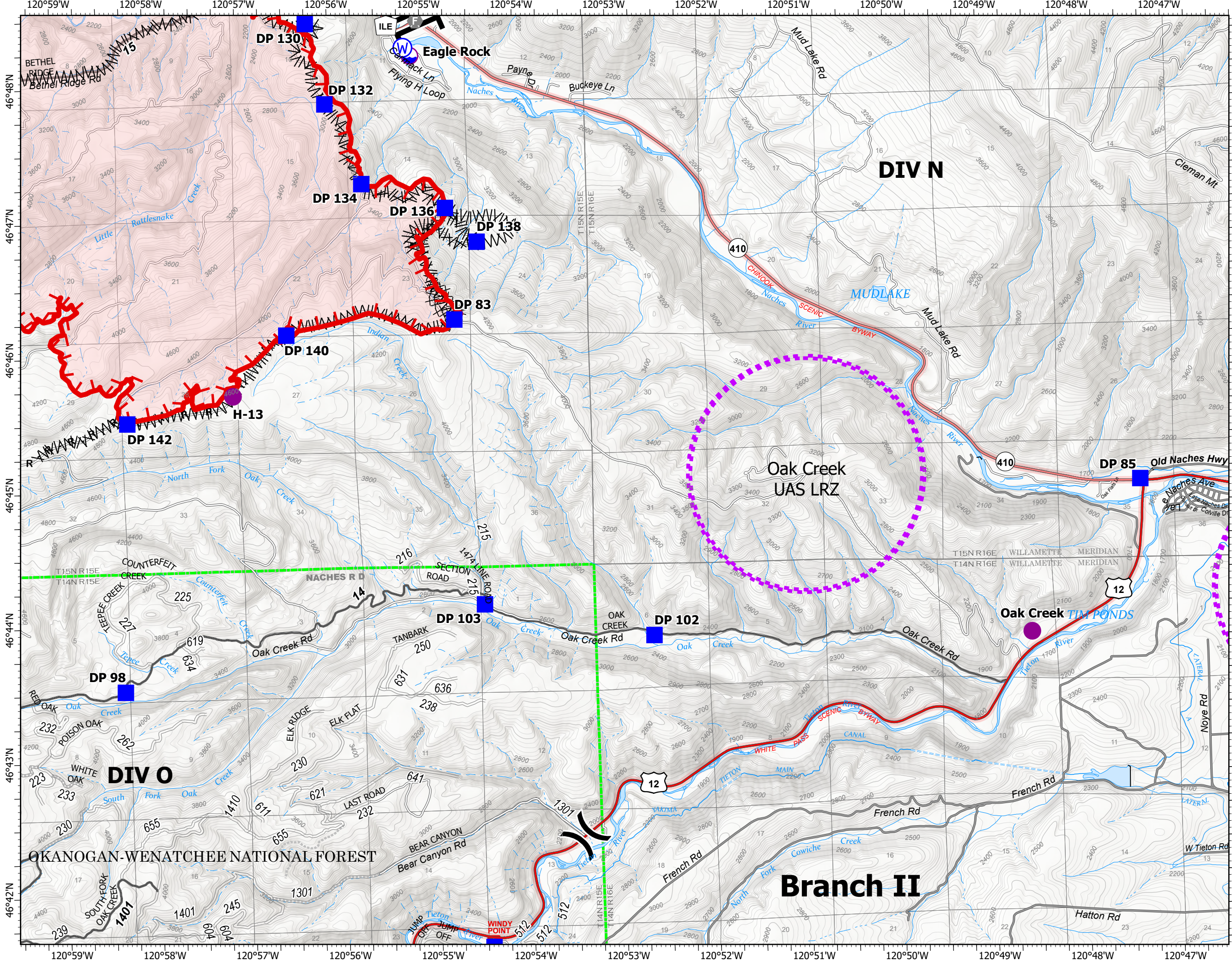
8/30/21

80,841 acres at 8/29/21 @ 1530

Page 4 of 10



- Dip Site
- Helispot
-) (Division Break
- || Branch Break
- Drop Point
- Fire Station
- ⊙ Water Source
- ⊗ Completed Dozer Line
- ⊘ Completed Fuel Break
- R - Completed Road as Line
- ⊞ UAS Launch and Recovery Zone
- Fire Edge
- ⊞ Administrative FS Boundary
- Wildfire Daily Fire Perimeter



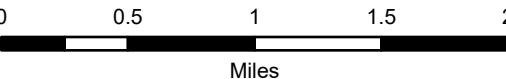
IAP Map

Schneider Springs
WA-OWF-000453

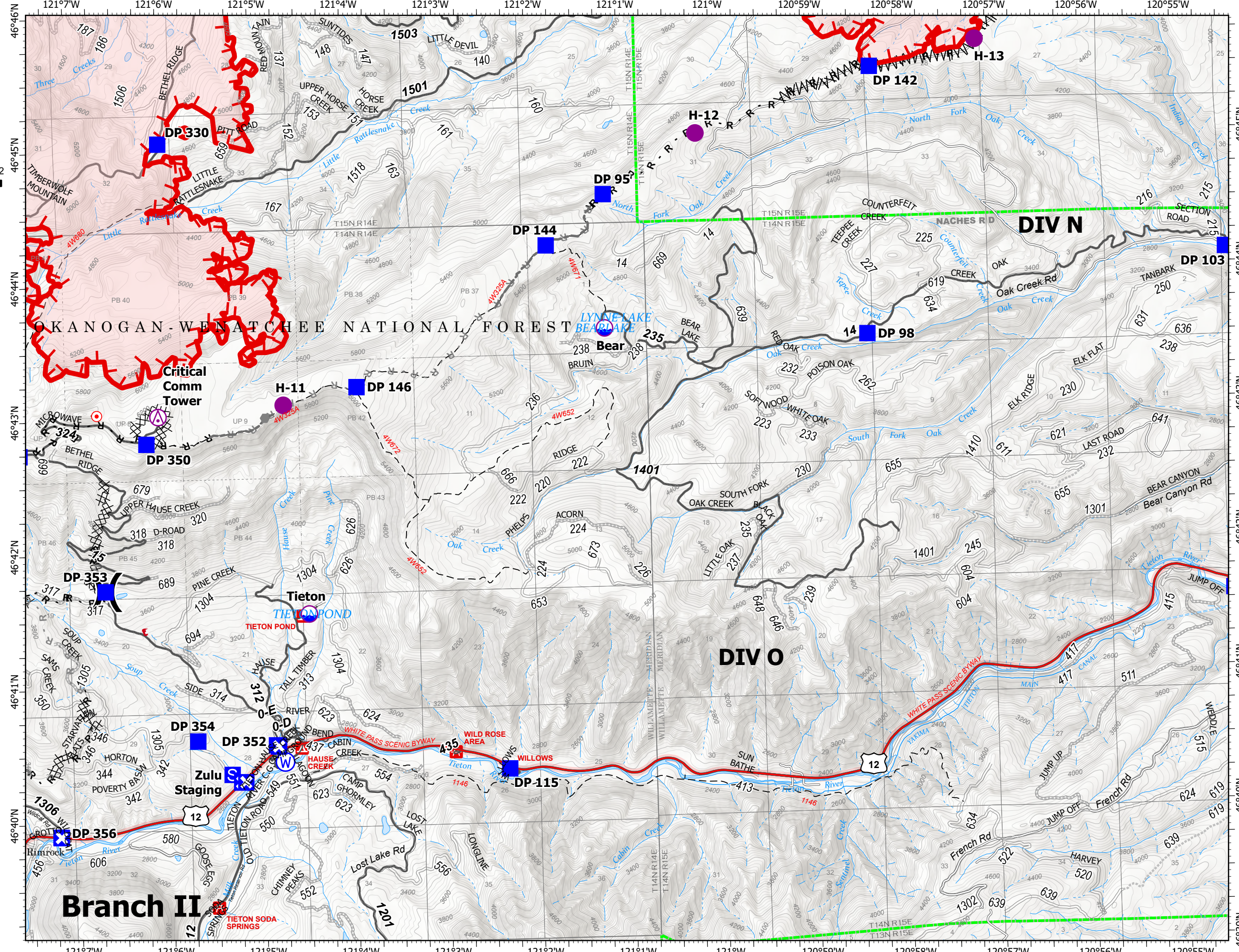
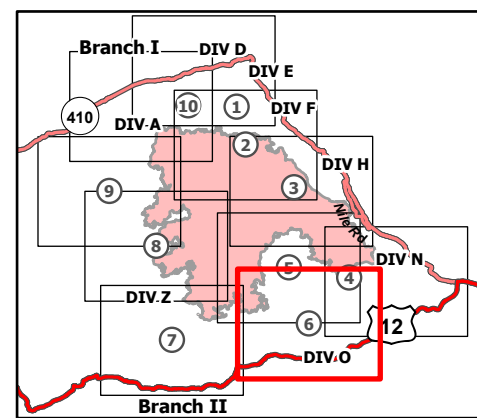
8/30/21

80,841 acres at 8/29/21 @ 1530

Page 6 of 10



- Aerial Hazard
- Dip Site
- Helispot
- Division Break
- Drop Point
- Closure
- Staging Area
- Hot Spot - Spot Fire
- Other
- Water Source
- Completed Dozer Line
- Completed Fuel Break
- Completed Hand Line
- Completed Road as Line
- Planned Dozer Line
- Planned Hand Line
- Planned Road as Line
- Fence
- Other
- Fire Edge
- Administrative FS Boundary
- Wildfire Daily Fire Perimeter



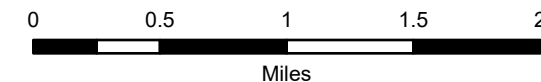
IAP Map

Schneider Springs
WA-OWF-000453

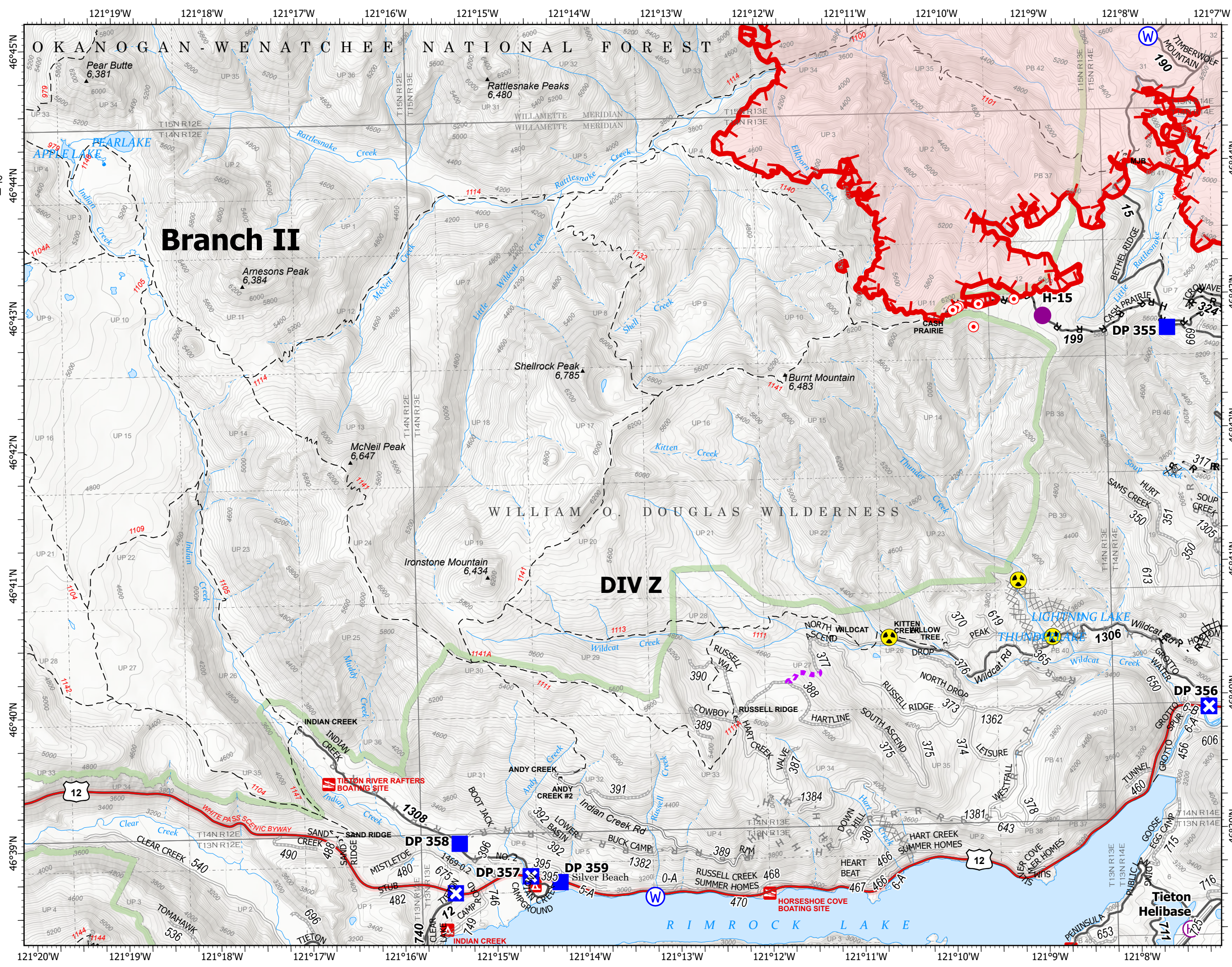
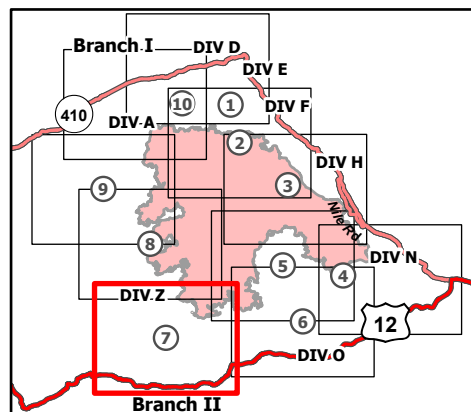
8/30/21

80,841 acres at 8/29/21 @ 1530

Page 7 of 10



- Helispot
- ⊕ Helibase
-) Division Break
- Drop Point
- ⊠ Closure
- ⊙ Hot Spot - Spot Fire
- ☠ Hazard
- ⊙ Water Source
- ⊗⊗ Completed Dozer Line
- H - Completed Hand Line
- R - Completed Road as Line
- ⊗⊗ Planned Dozer Line
- H - Planned Hand Line
- R - Planned Road as Line
- Other
- Route
- ┌ Fire Edge
- ▭ Administrative FS Boundary
- ▭ FS Wilderness Boundary
- ▭ Wildfire Daily Fire Perimeter



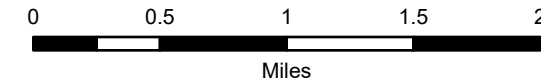
IAP Map

Schneider Springs
WA-OWF-000453

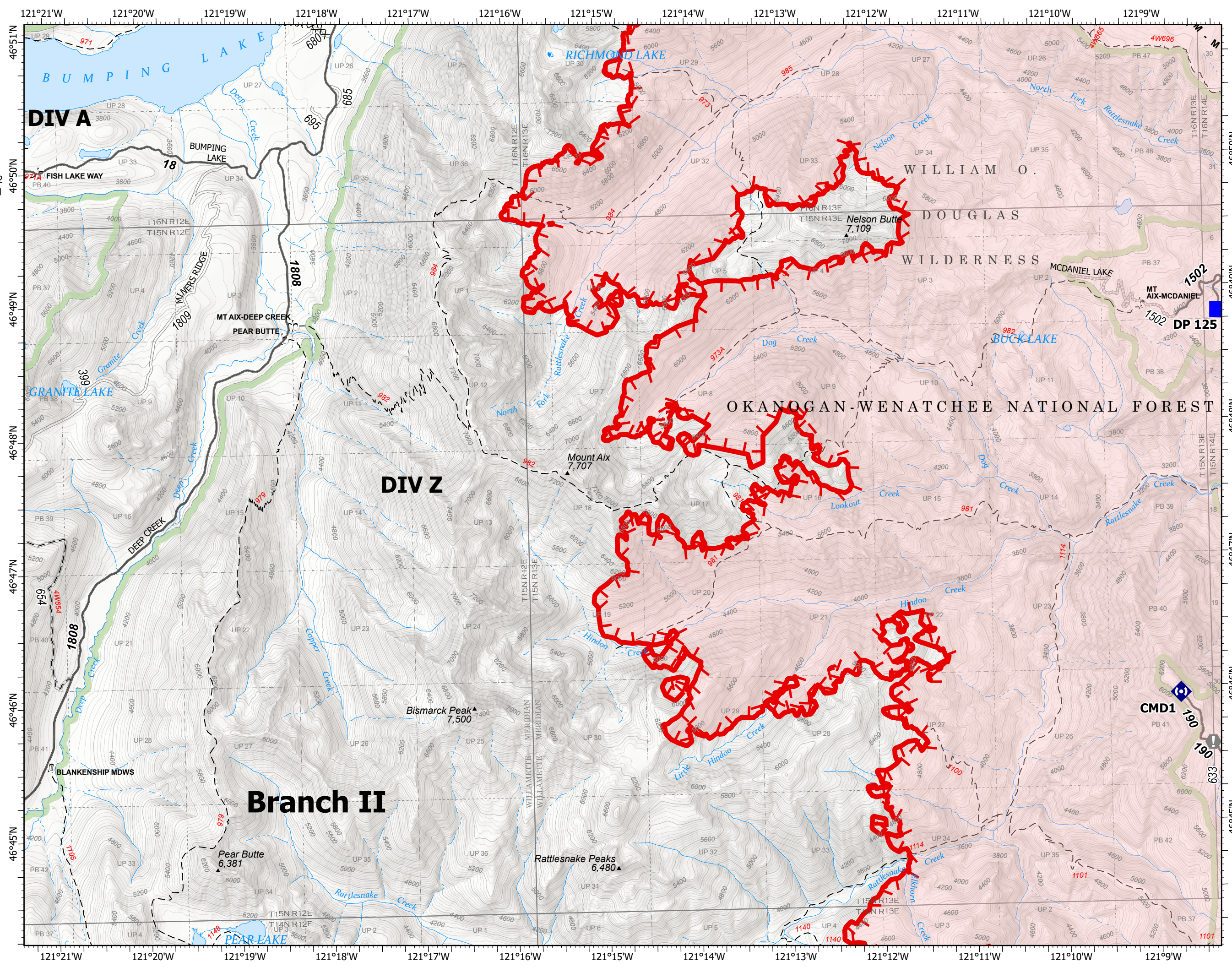
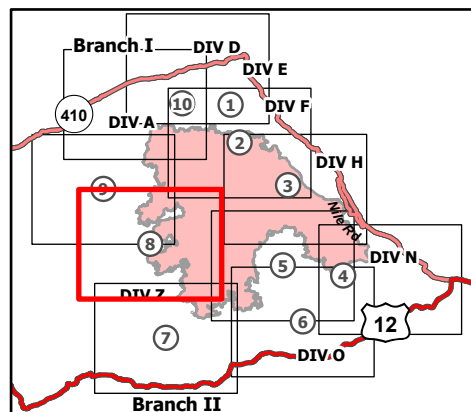
8/30/21

80,841 acres at 8/29/21 @ 1530

Page 8 of 10



- Drop Point
- Value at Risk
- Repeater
- Completed Dozer Line
- Completed Mixed Construction Line
- Completed Road as Line
- Planned Hand Line
- Fire Edge
- Administrative FS Boundary
- FS Wilderness Boundary
- Wildfire Daily Fire Perimeter



8/29/2021 2158
Acres from IR
North American 1983 Datum.
Lat/Long Grid



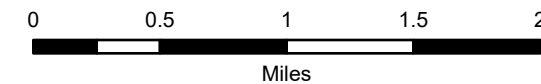
IAP Map

Schneider Springs
WA-OWF-000453

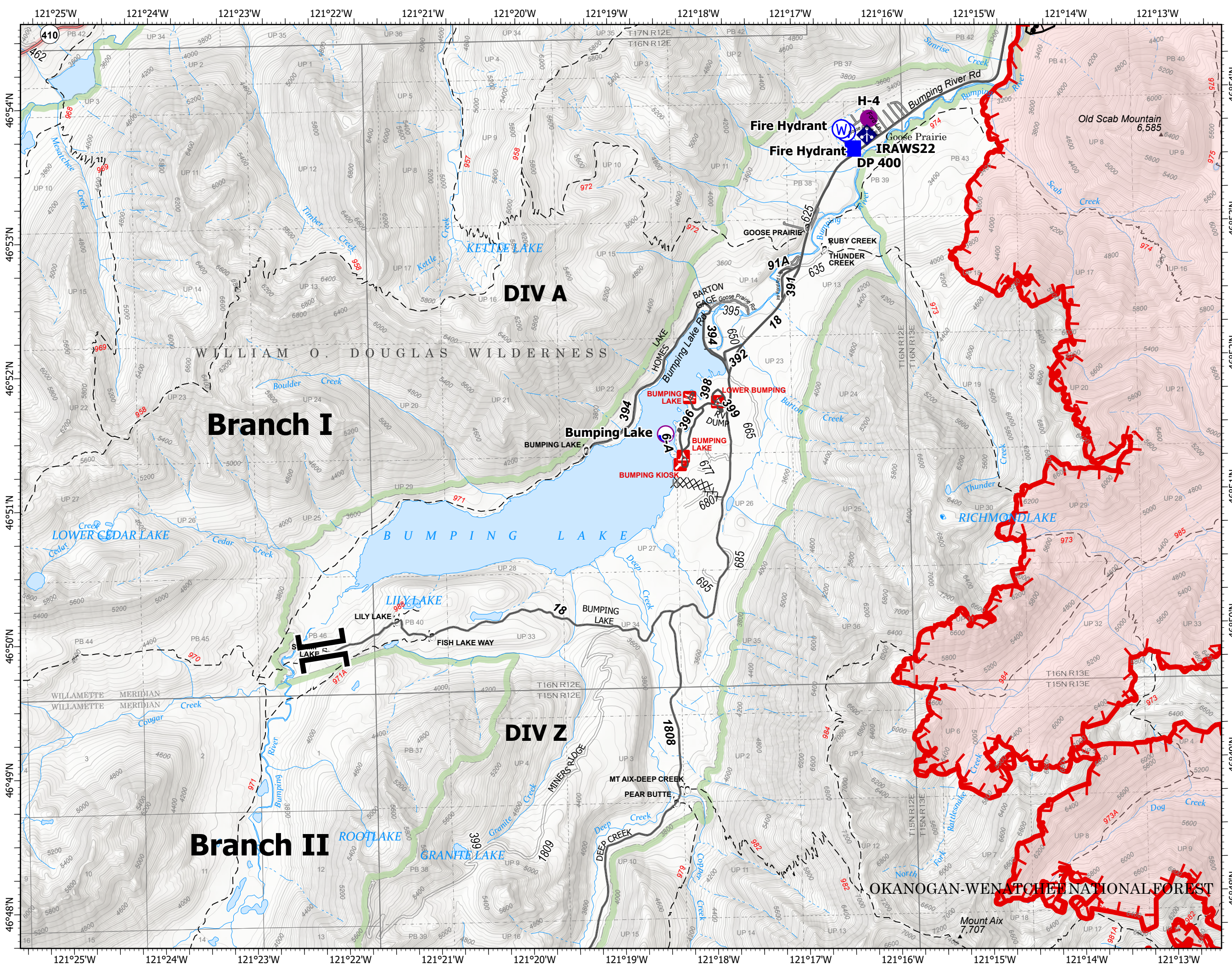
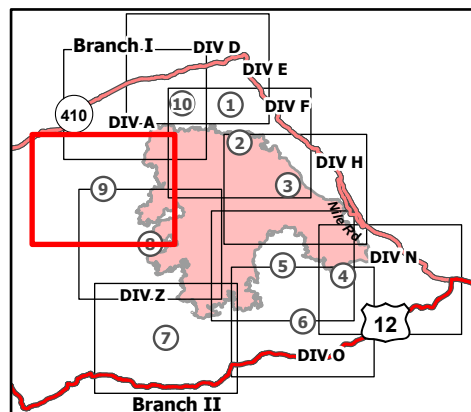
8/30/21

80,841 acres at 8/29/21 @ 1530

Page 9 of 10



- Dip Site
- Helispot
- Branch Break
- Drop Point
- Mobile Weather Unit
- Water Source
- Completed Burnout
- Completed Dozer Line
- Planned Hand Line
- Fire Edge
- Administrative FS Boundary
- FS Wilderness Boundary
- Wildfire Daily Fire Perimeter



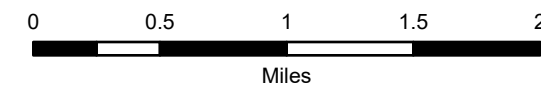
IAP Map

Schneider Springs
WA-OWF-000453

8/30/21

80,841 acres at 8/29/21 @ 1530

Page 10 of 10



- Dip Site
- Helispot
- Division Break
- Drop Point
- Closure
- Staging Area
- Lookout
- Value at Risk
- Bridge
- Mobile Weather Unit
- Water Source
- Completed Burnout
- Completed Fuel Break
- Fire Edge
- Administrative FS Boundary
- FS Wilderness Boundary
- Wildfire Daily Fire Perimeter

