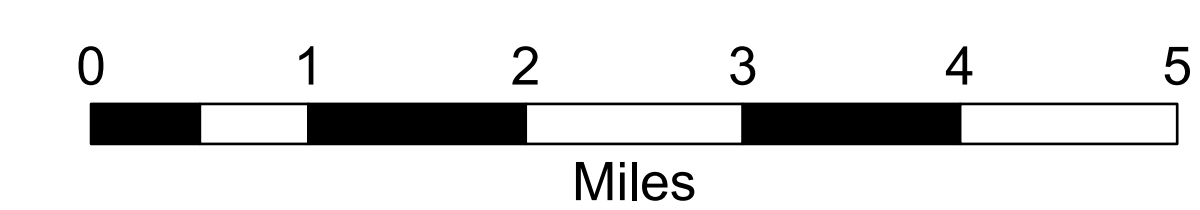
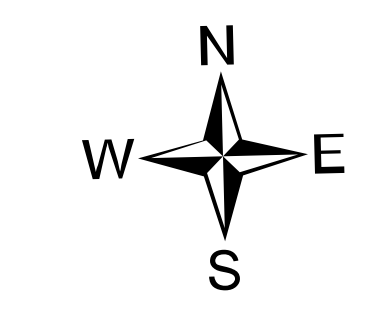


Transportation Map

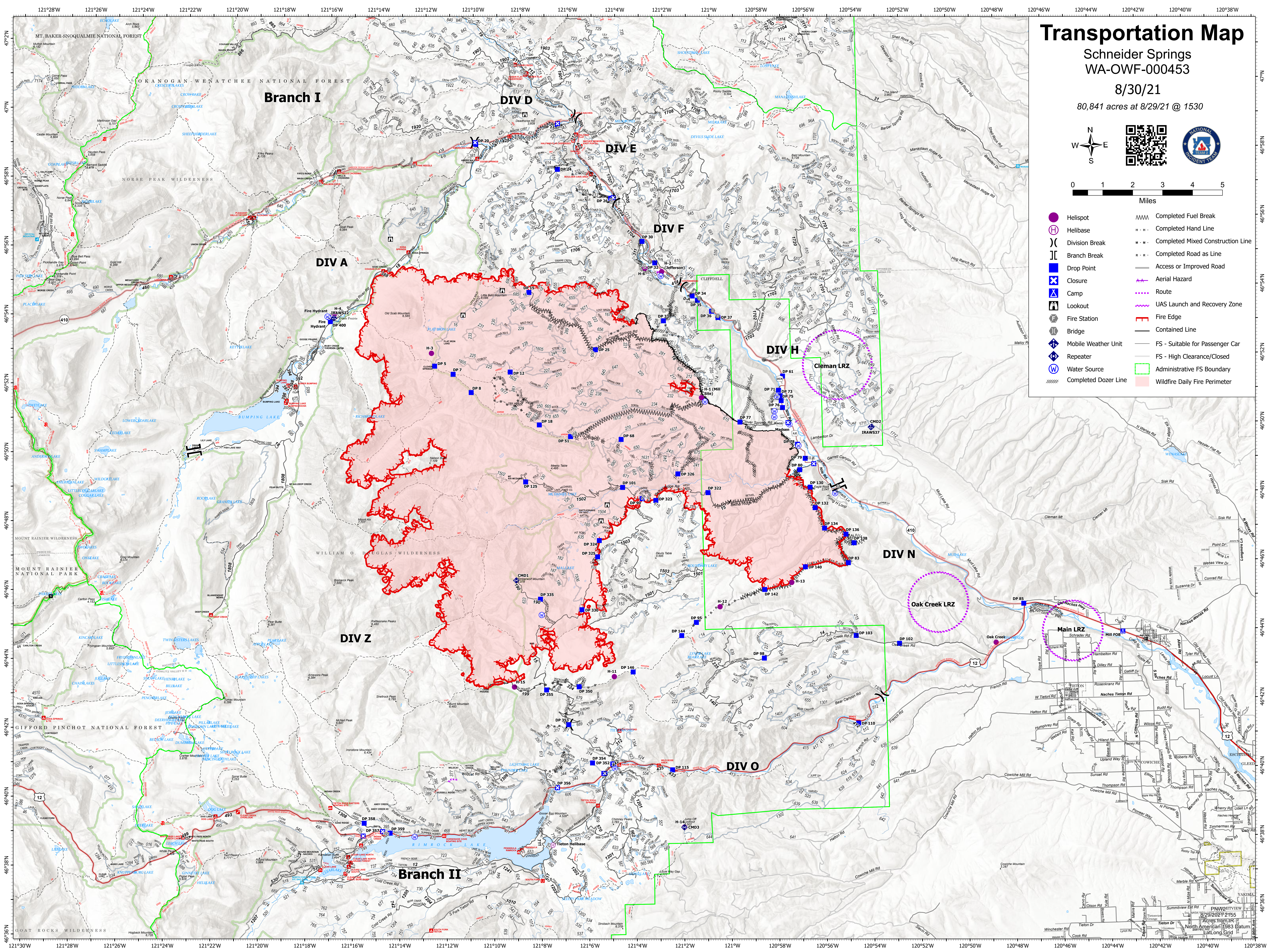
Schneider Springs
WA-OWF-000453

8/30/21

80,841 acres at 8/29/21 @ 1530



- | | |
|----------------------|-----------------------------------|
| Helispot | Completed Fuel Break |
| Helibase | Completed Hand Line |
| Division Break | Completed Mixed Construction Line |
| Drop Point | Completed Road as Line |
| Closure | Access or Improved Road |
| Camp | Aerial Hazard |
| Lookout | Route |
| Fire Station | UAS Launch and Recovery Zone |
| Bridge | Fire Edge |
| Mobile Weather Unit | Contained Line |
| Repeater | FS - Suitable for Passenger Car |
| Water Source | FS - High Clearance/Closed |
| Completed Dozer Line | Administrative FS Boundary |
| | Wildfire Daily Fire Perimeter |



47°N
46°58'N
46°56'N
46°54'N
46°52'N
46°50'N
46°48'N
46°46'N
46°44'N
46°42'N
46°40'N
46°38'N
46°36'N

47°N
46°58'N
46°56'N
46°54'N
46°52'N
46°50'N
46°48'N
46°46'N
46°44'N
46°42'N
46°40'N
46°38'N
46°36'N

121°28'W 121°26'W 121°24'W 121°22'W 121°20'W 121°18'W 121°16'W 121°14'W 121°12'W 121°10'W 121°8'W 121°6'W 121°4'W 121°2'W 121°W 120°58'W 120°56'W 120°54'W 120°52'W 120°50'W 120°48'W 120°46'W 120°44'W 120°42'W 120°40'W 120°38'W

121°30'W 121°28'W 121°26'W 121°24'W 121°22'W 121°20'W 121°18'W 121°16'W 121°14'W 121°12'W 121°10'W 121°8'W 121°6'W 121°4'W 121°2'W 121°W 120°58'W 120°56'W 120°54'W 120°52'W 120°50'W 120°48'W 120°46'W 120°44'W 120°42'W 120°40'W 120°38'W