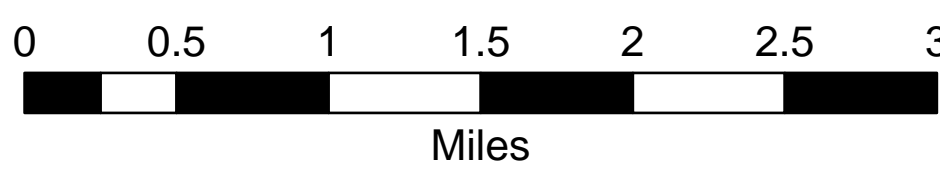


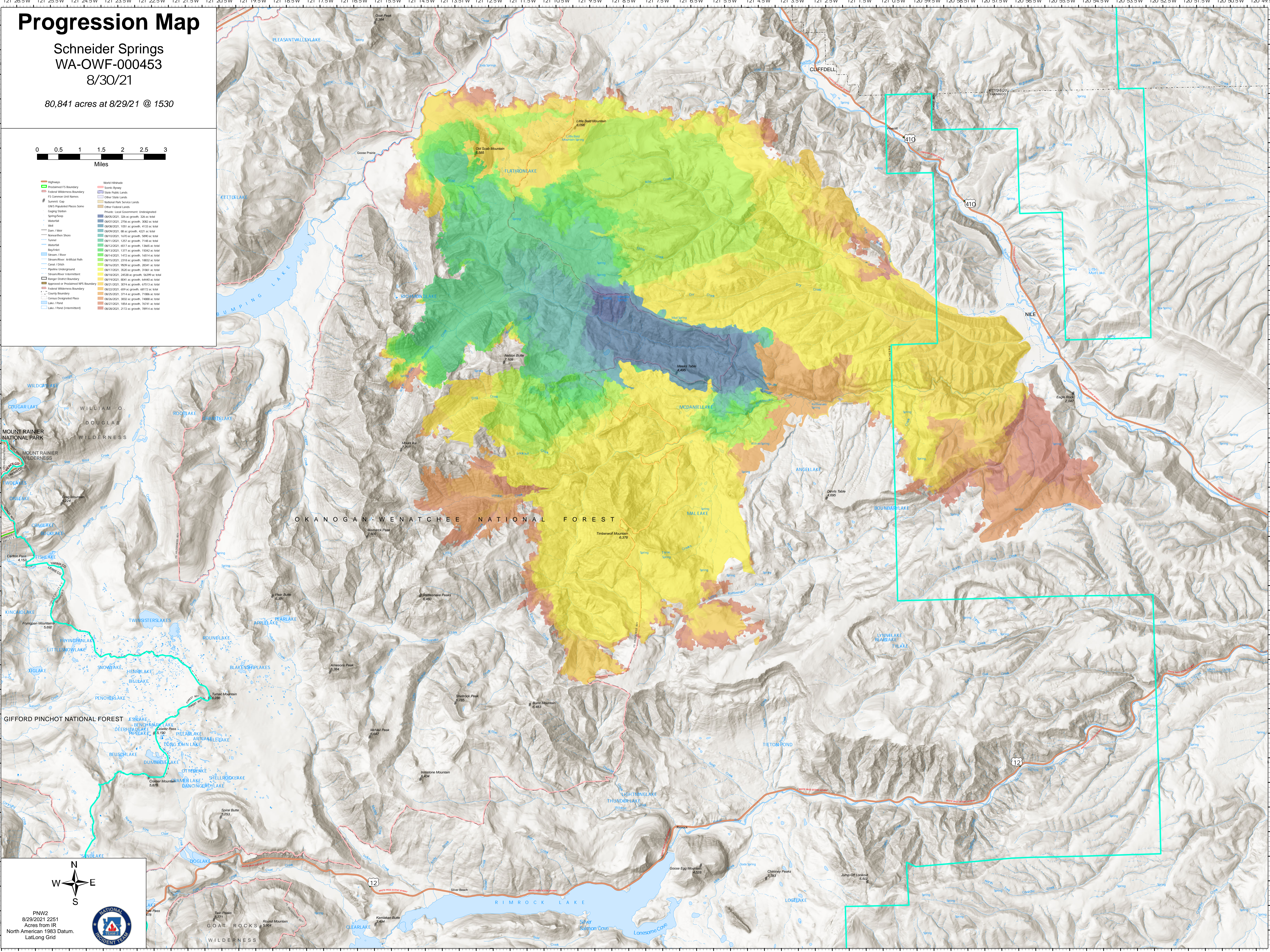
Progression Map

Schneider Springs
WA-OWF-000453
8/30/21

80,841 acres at 8/29/21 @ 1530



- Highways
- Proclamation FS Boundary
- Federal Wilderness Boundary
- FS Common Unit Names
- Summit Cap
- GMS Revealed Places Some
- Gauging Station
- Spring/Well
- Waterfall
- Wall
- Dam / Weir
- Nonwater Shore
- Turnout
- Waterfall
- Windfall
- Stream / River
- Stream/Flow Artificial Path
- Canal / Drain
- Pipeline Underground
- Stream/Flow Interment
- Boundary Contour Boundary
- Approved or Proclaimed NFS Boundary
- Federal Wilderness Boundary
- County Boundary
- Consolidated Designated Place
- Lake / Pond
- Lake / Pond (Interment)
- World Hitheds
- Summit Byway
- State Public Lands
- Other State Lands
- National Park Service Lands
- Other Federal Lands
- Private: Local Government Undesignated
- 09/05/2021, 526 ac growth, 526 ac total
- 09/05/2021, 2756 ac growth, 2802 ac total
- 09/08/2021, 1061 ac growth, 4133 ac total
- 09/09/2021, 88 ac growth, 4221 ac total
- 09/10/2021, 1430 ac growth, 5951 ac total
- 09/11/2021, 1263 ac growth, 7148 ac total
- 09/12/2021, 6673 ac growth, 13862 ac total
- 09/13/2021, 1371 ac growth, 15233 ac total
- 09/14/2021, 1472 ac growth, 16705 ac total
- 09/15/2021, 2718 ac growth, 18423 ac total
- 09/16/2021, 1920 ac growth, 20343 ac total
- 09/17/2021, 3520 ac growth, 23863 ac total
- 09/18/2021, 2428 ac growth, 26291 ac total
- 09/19/2021, 6801 ac growth, 33092 ac total
- 09/20/2021, 3074 ac growth, 36166 ac total
- 09/21/2021, 6997 ac growth, 43163 ac total
- 09/22/2021, 3714 ac growth, 46877 ac total
- 09/23/2021, 3302 ac growth, 50179 ac total
- 09/24/2021, 1884 ac growth, 52063 ac total
- 09/25/2021, 2172 ac growth, 54235 ac total



PNW2
8/29/2021 2251
Acres from IR
North American 1983 Datum,
Lat/Long Grid

