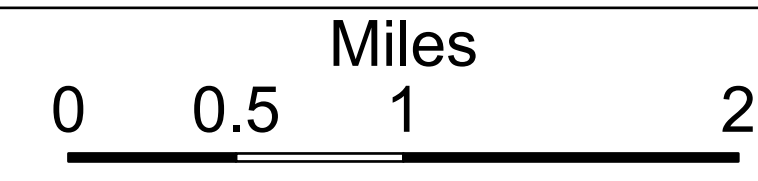


DIV Z/O


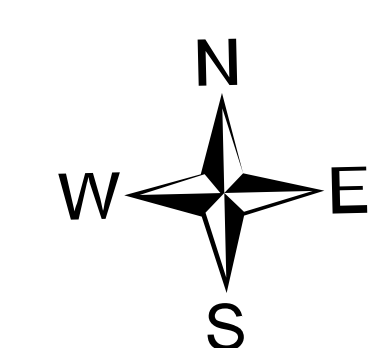
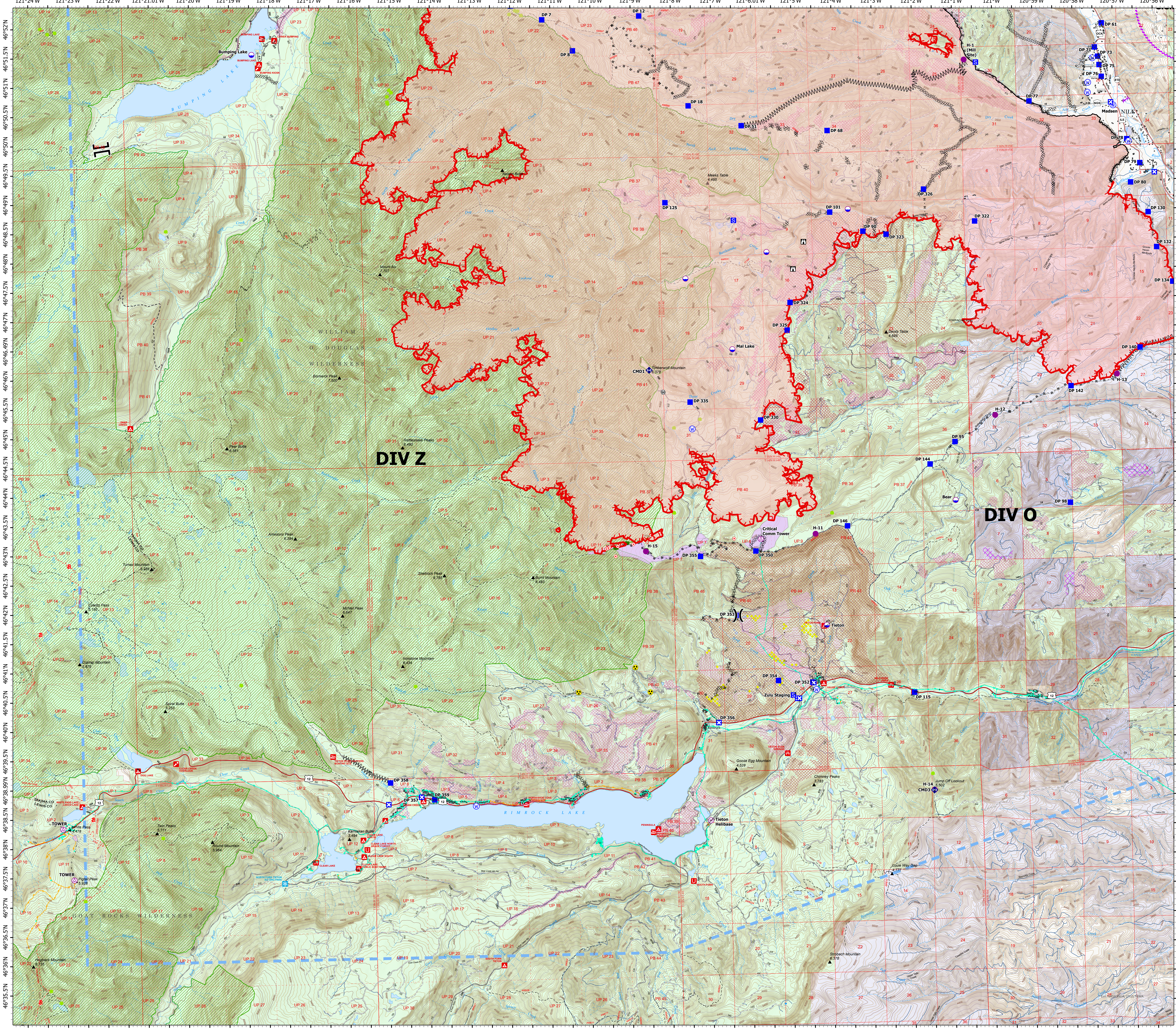
# Ops Map

Schneider Springs  
WA-OWF-000453  
Division Map Book

80,841 acres at 8/29/21 @ 1530



- Aerial Hazard
- Dip Site
- Helispot
- Helibase
- Division Break
- Branch Break
- Drop Point
- Closure
- Staging Area
- Lookout
- Hot Spot - Spot Fire
- Value at Risk
- Repeater
- Hazard
- Water Source
- Completed Dozer Line
- Completed Fuel Break
- Completed Hand Line
- Completed Mixed Construction Line
- Completed Road as Line
- Planned Dozer Line
- Planned Hand Line
- Planned Road as Line
- Planned Secondary Line
- Access or Improved Road
- Aerial Hazard
- UAS Launch and Recovery Zone
- Temporary Flight Restriction
- Fire Edge
- Contained Line
- Wildfire Daily Fire Perimeter
- Structures
- Seed Trees
- Whitebark Pine Trees
- Campground
- Group Campground
- Picnic Site
- Boating Site
- Interpretive Site
- Snowpark
- Above Ground Power Lines
- Below Ground Power Lines
- State or PVT
- African Wiregrass
- Whitebark Pine Polygons
- Fire Fuels Treatments
- Mechanical Fuels Treatments
- DNR Fuel Treatments
- Federal Wilderness Boundary
- Forest Service Land
- State Public Lands
- Other State Lands
- Other Federal Lands
- Private; Local Government; Undesignated



PNW2  
8/30/2021 2138  
Acres from IR  
North American 1983 Datum, Lat/Long  
Grid

