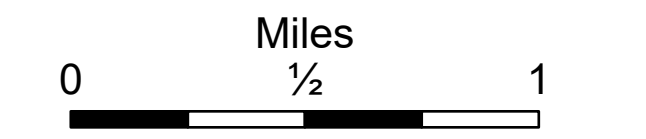
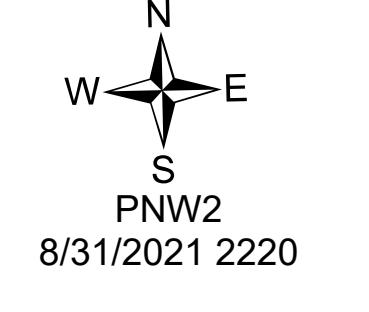


# Repair Div A/D/E

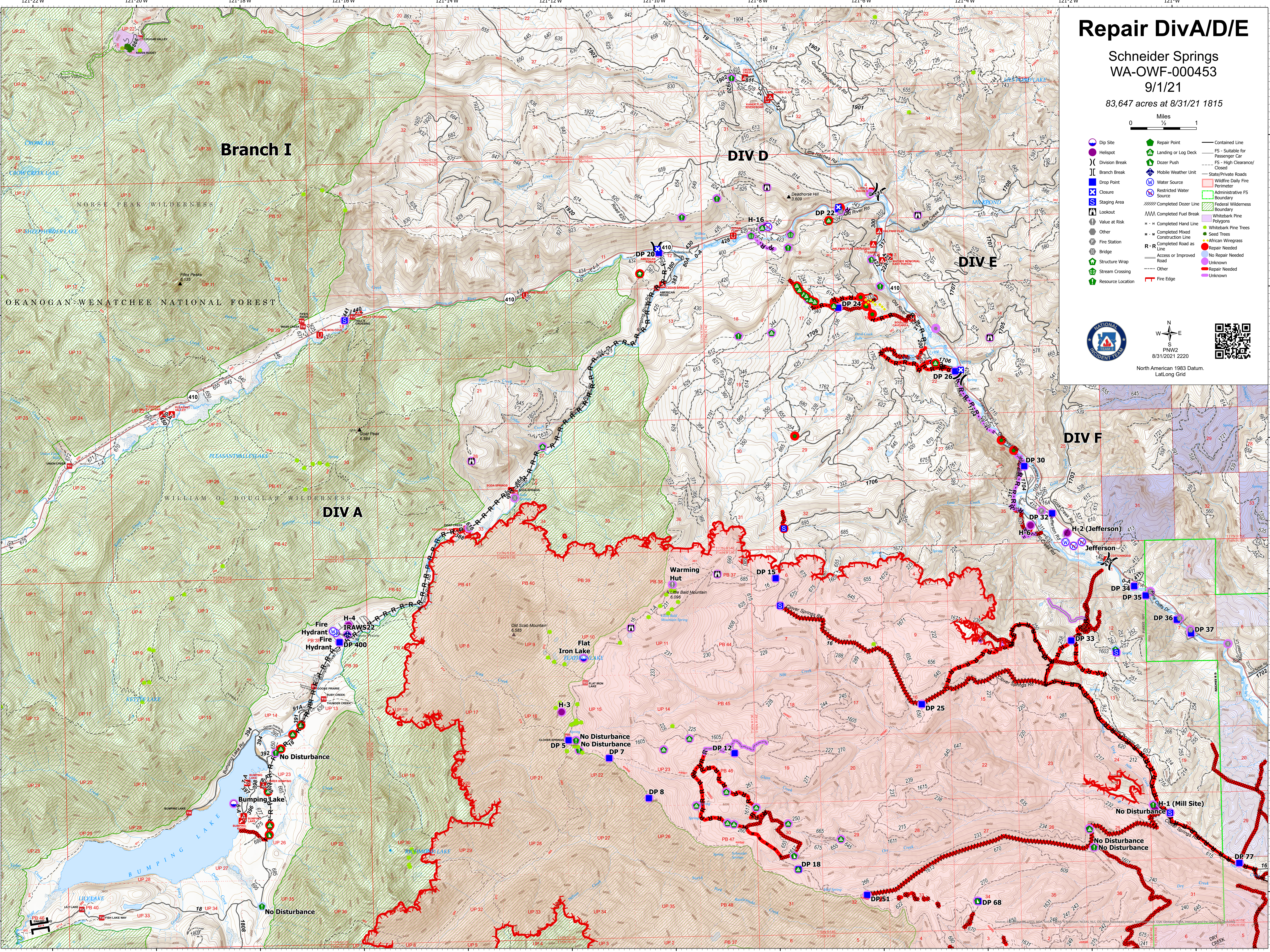
Schneider Springs  
WA-OWF-000453  
9/1/21  
83,647 acres at 8/31/21 1815



- Dip Site
- Helispot
- Division Break
- Branch Break
- Drop Point
- Closure
- Staging Area
- Value at Risk
- Other
- Fire Station
- Bridge
- Structure Wrap
- Stream Crossing
- Resource Location
- Repair Point
- Landing or Log Deck
- Dozer Push
- Mobile Weather Unit
- Water Source
- Restricted Water Source
- Completed Dozer Line
- Lookout
- Completed Fuel Break
- Completed Hand Line
- Completed Mixed Construction Line
- Completed Road as Line
- Access or Improved Road
- Other
- Fire Edge
- Contained Line
- FS - Suitable for Passenger Car
- FS - High Clearance/Closed
- State/Private Roads
- Wildfire Daily Fire Perimeter
- Administrative FS Boundary
- Federal Wilderness Boundary
- Completed Dozer Line
- Completed Fuel Break
- Completed Hand Line
- Completed Mixed Construction Line
- Completed Road as Line
- Access or Improved Road
- Other
- Fire Edge
- Whitebark Pine Polygons
- Whitebark Pine Trees
- Seed Trees
- African Wiregrass
- Repair Needed
- No Repair Needed
- Unknown
- Repair Needed
- Unknown



North American 1983 Datum.  
Lat,Long Grid



121°22'W 121°20'W 121°18'W 121°16'W 121°14'W 121°12'W 121°10'W 121°8'W 121°6'W 121°4'W 121°2'W 121°W

47°27'N 47°25'N 47°23'N 47°21'N 47°19'N 47°17'N 47°15'N 47°13'N 47°11'N 47°9'N 47°7'N 47°5'N 47°3'N 47°1'N