

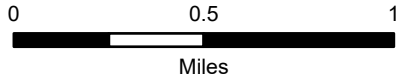
# Forest Closure

Schneider Springs  
WA-OWF-000453

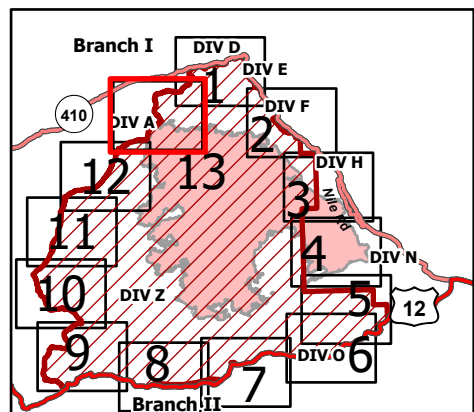
9/2/21

83,647 acres at 8/31/21 1815

Page 13



- FS - Suitable for Passenger Car
- FS - High Clearance/Closed
- Secondary Highway
- Paved Roads
- Dirt (Not Paved)
- Paved Road
- Gravel Road
- Dirt Roads
- Unimproved Roads
- Closed Roads
- Administrative FS Boundary
- FS Wilderness Boundary
- Wildfire Daily Fire Perimeter
- Forest Closure Area
- Bureau of Land Management
- US Forest Service
- National Park Service
- Bureau of Reclamation
- State
- Other Public
- Private



9/1/2021 2201  
Acres from IR  
North American 1983 Datum.  
Lat/Long Grid

