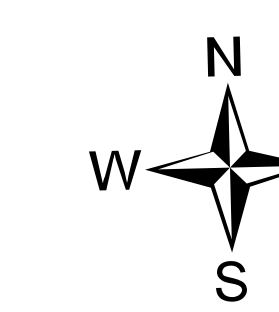


Forest Closure Map

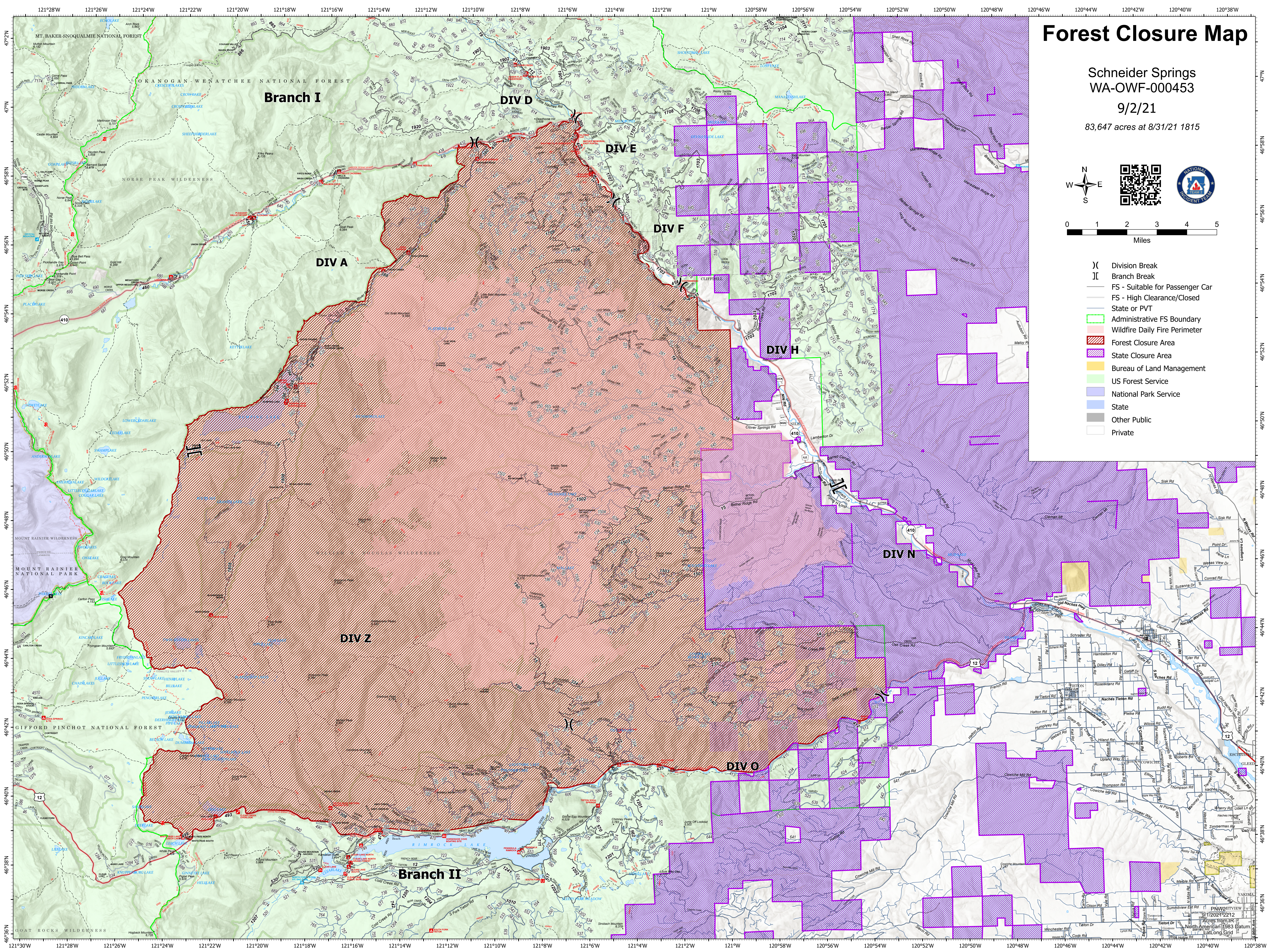
Schneider Springs
WA-OWF-000453

9/2/21

83,647 acres at 8/31/21 1815



- (X) Division Break
- [] Branch Break
- FS - Suitable for Passenger Car
- FS - High Clearance/Closed
- State or PVT
- Administrative FS Boundary
- Wildfire Daily Fire Perimeter
- Forest Closure Area
- State Closure Area
- Bureau of Land Management
- US Forest Service
- National Park Service
- State
- Other Public
- Private



PNW211VIEW
G1/20212212
Acres from IR
North American 1983 Datum
LatLong Grid