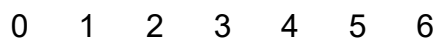


# IAP Map Index

Schneider Springs  
WA-OWF-000453

9/2/21

83,647 acres at 8/31/21 1815

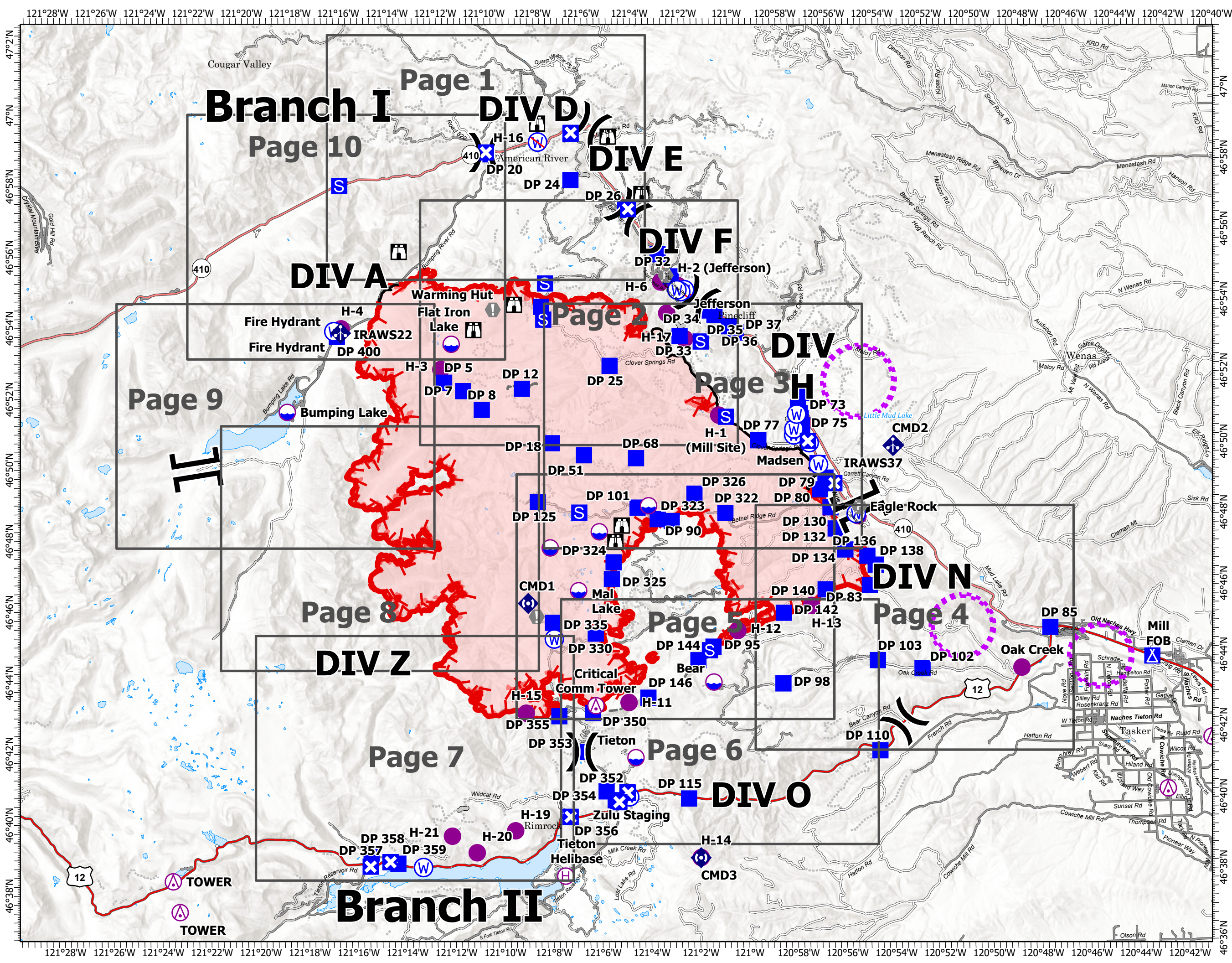


Miles

- Aerial Hazard
- Dip Site
- Helispot
- Helibase
- Division Break
- Branch Break
- Drop Point
- Closure
- Camp
- Staging Area
- Lookout
- Value at Risk
- Fire Station
- Mobile Weather Unit
- Repeater
- Water Source
- Restricted Water Source
- Access or Improved Road
- Fence
- Other
- Aerial Hazard
- UAS Launch and Recovery Zone
- Fire Edge
- Contained Line
- Wildfire Daily Fire Perimeter
- Grid Index



PNW2  
9/1/2021 2134  
Acres from IR  
North American 1983 Datum.  
Lat/Long Grid



121°28'W 121°26'W 121°24'W 121°22'W 121°20'W 121°18'W 121°16'W 121°14'W 121°12'W 121°10'W 121°8'W 121°6'W 121°4'W 121°2'W 121°W 120°58'W 120°56'W 120°54'W 120°52'W 120°50'W 120°48'W 120°46'W 120°44'W 120°42'W 120°40'W

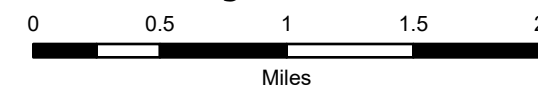
# IAP Map

Schneider Springs  
WA-OWF-000453

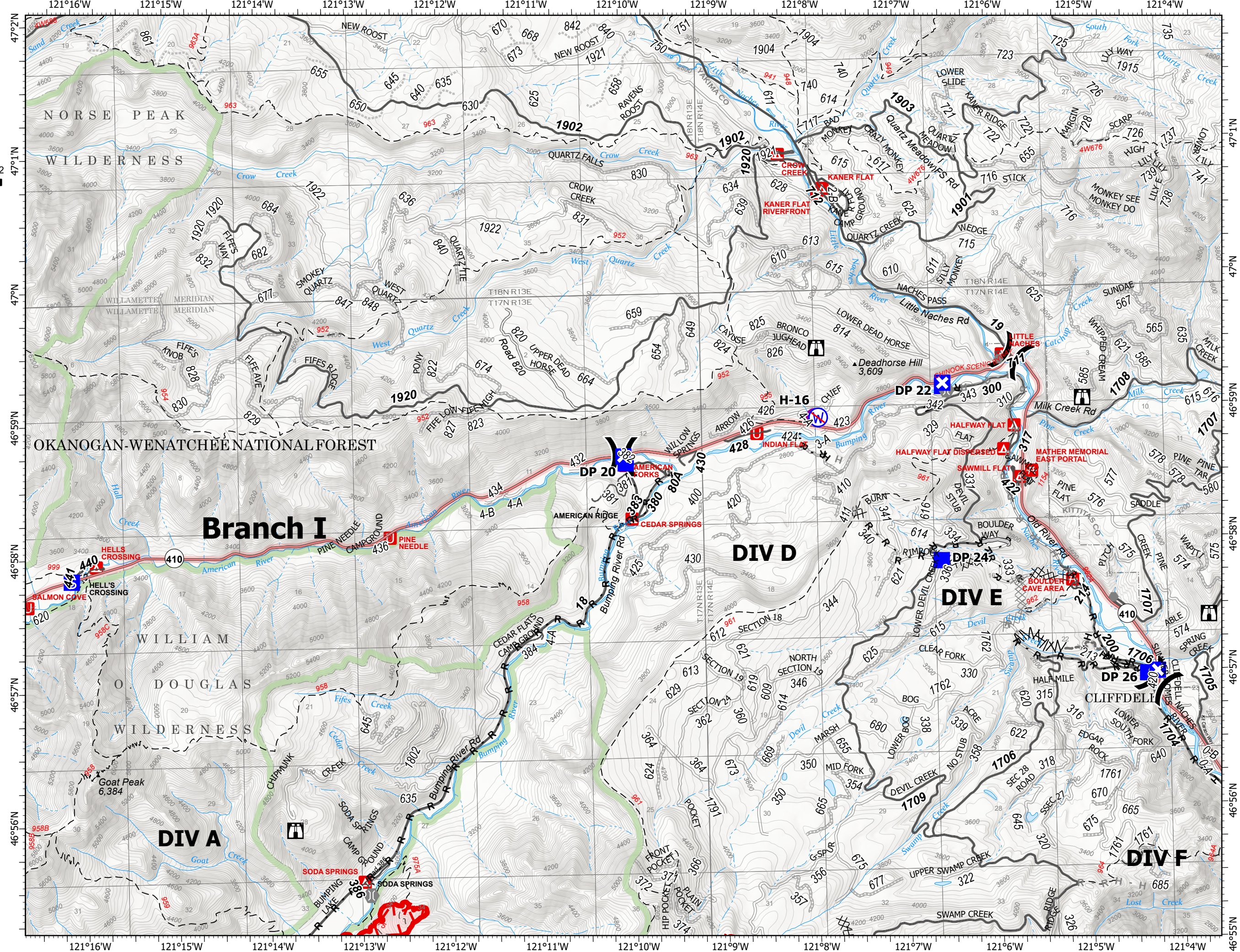
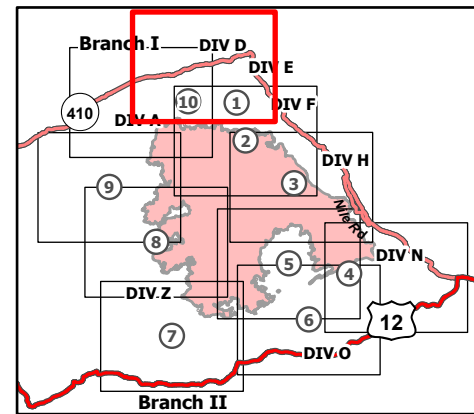
9/2/21

83,647 acres at 8/31/21 1815

Page 1 of 10



- Helispot
- ) Division Break
- Drop Point
- ⊠ Closure
- Ⓢ Staging Area
- 🏠 Lookout
- Other
- 🌉 Bridge
- Ⓜ Restricted Water Source
- ⓧⓧ Completed Dozer Line
- Ⓜ Completed Fuel Break
- H - Completed Hand Line
- R - Completed Road as Line
- ⓧⓧ Planned Dozer Line
- H - Planned Hand Line
- R - Planned Road as Line
- Access or Improved Road
- - - Other
- 🔴 Fire Edge
- 🟢 Administrative FS Boundary
- 🟢 FS Wilderness Boundary
- 🔴 Wildfire Daily Fire Perimeter



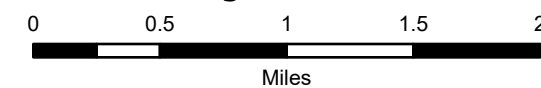
# IAP Map

Schneider Springs  
WA-OWF-000453

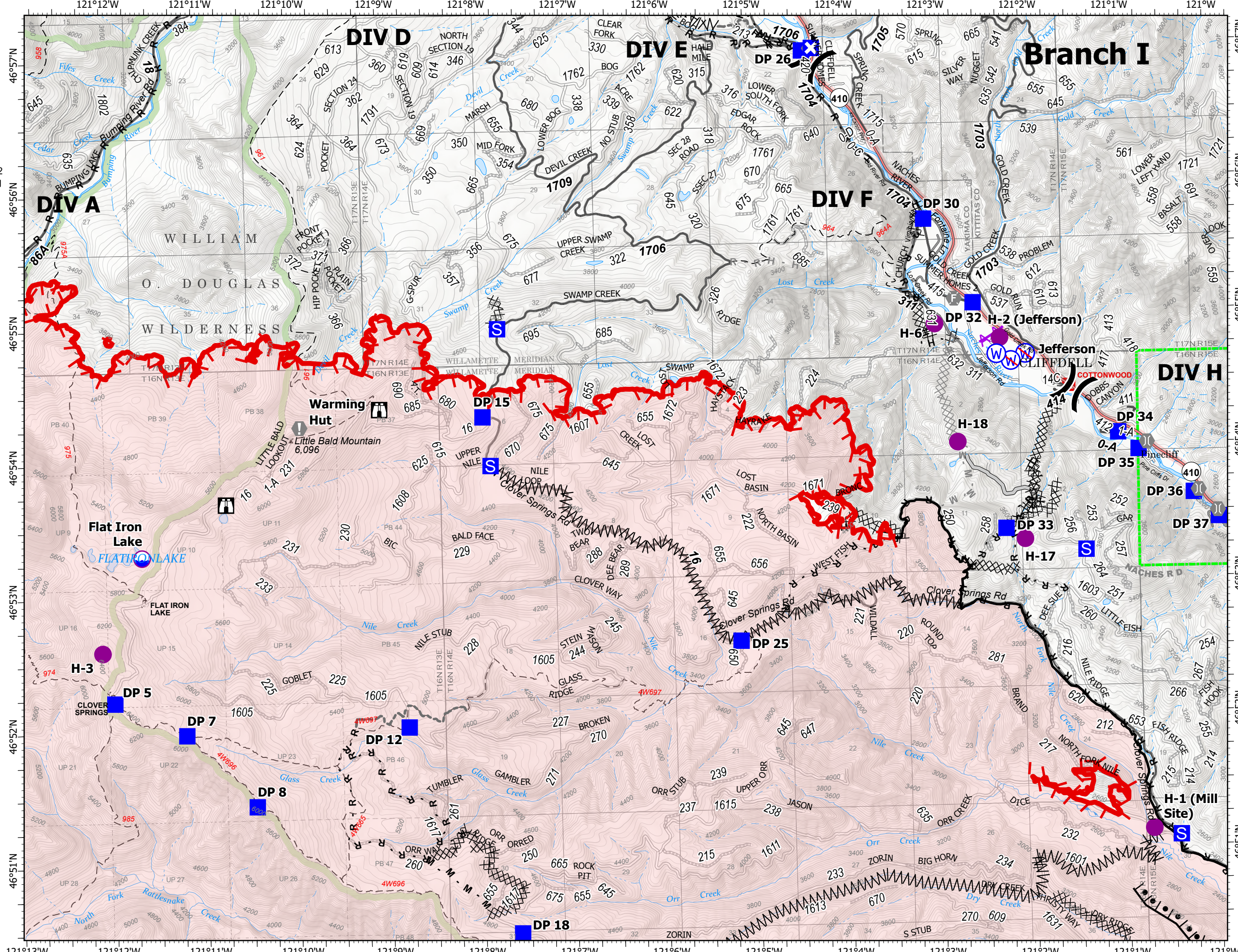
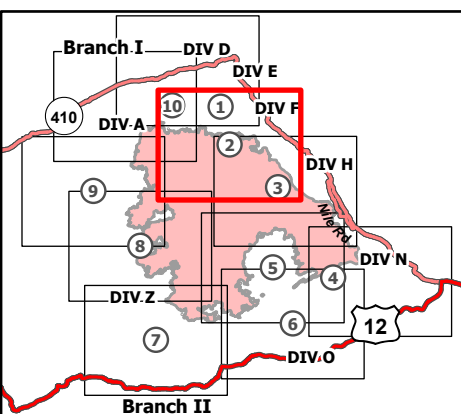
9/2/21

83,647 acres at 8/31/21 1815

Page 2 of 10



- Dip Site
- Helispot
- Division Break
- Drop Point
- Closure
- Staging Area
- Lookout
- Value at Risk
- Fire Station
- Bridge
- Water Source
- Restricted Water Source
- Completed Burnout
- Completed Dozer Line
- Completed Fuel Break
- Completed Hand Line
- Completed Mixed Construction Line
- Completed Road as Line
- Planned Dozer Line
- Planned Hand Line
- Planned Mixed Construction Line
- Planned Road as Line
- Access or Improved Road
- Other
- Aerial Hazard
- Fire Edge
- Contained Line
- Administrative FS Boundary
- FS Wilderness Boundary
- Wildfire Daily Fire Perimeter



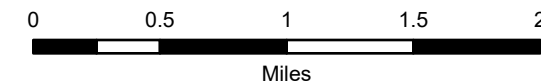
# IAP Map

Schneider Springs  
WA-OWF-000453

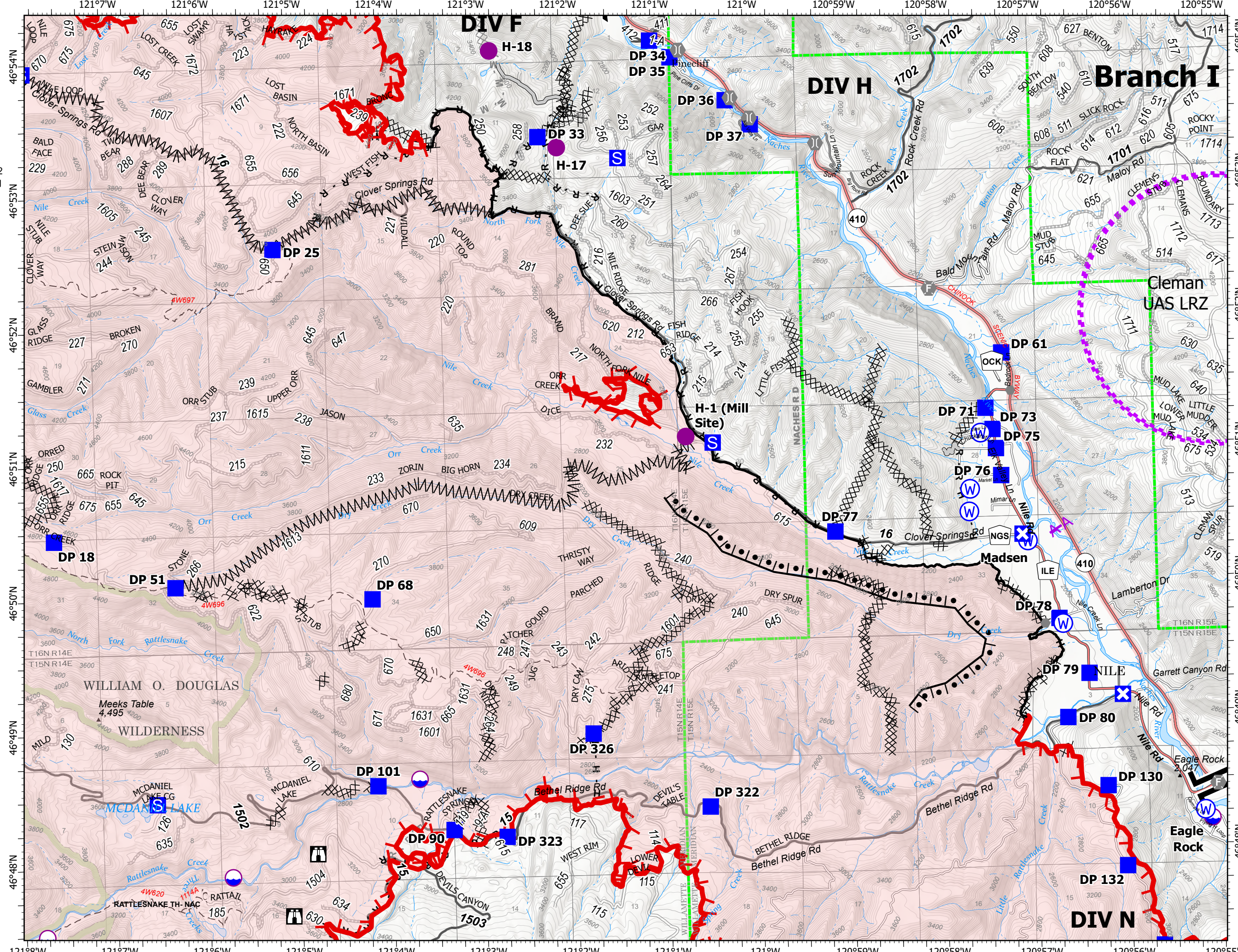
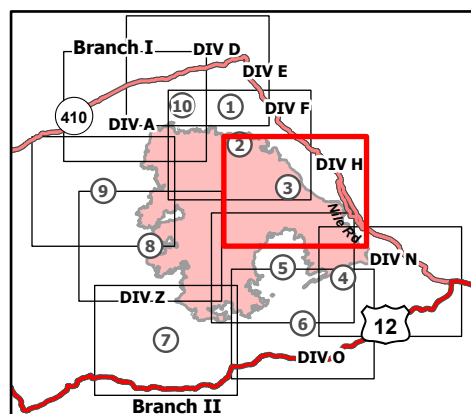
9/2/21

83,647 acres at 8/31/21 1815

Page 3 of 10



- Dip Site
- Helispot
- ⌘ Division Break
- ⌚ Branch Break
- Drop Point
- ⊠ Closure
- Ⓢ Staging Area
- ⌚ Lookout
- Other
- ⊙ Fire Station
- ⌚ Bridge
- Ⓢ Water Source
- Ⓢ Completed Burnout
- ⌘ Completed Dozer Line
- ⌚ Completed Fuel Break
- H Completed Hand Line
- M Completed Mixed Construction Line
- R Completed Road as Line
- ⌘ Planned Dozer Line
- M Planned Mixed Construction Line
- R Planned Road as Line
- Access or Improved Road
- ⚡ Aerial Hazard
- ⌚ UAS Launch and Recovery Zone
- Fire Edge
- Contained Line
- ⌚ Administrative FS Boundary
- FS Wilderness Boundary
- Wildfire Daily Fire Perimeter



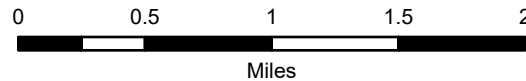
# IAP Map

Schneider Springs  
WA-OWF-000453

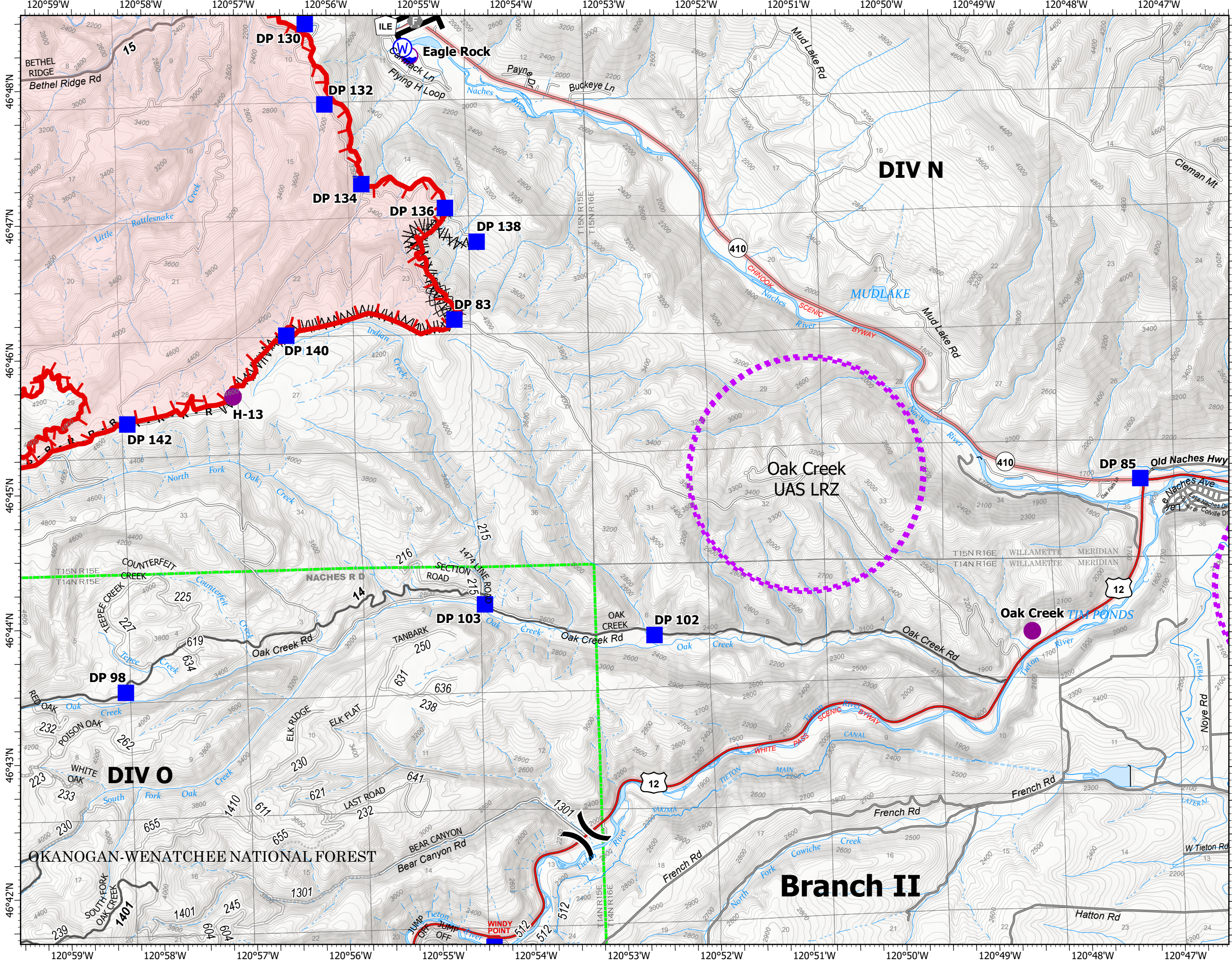
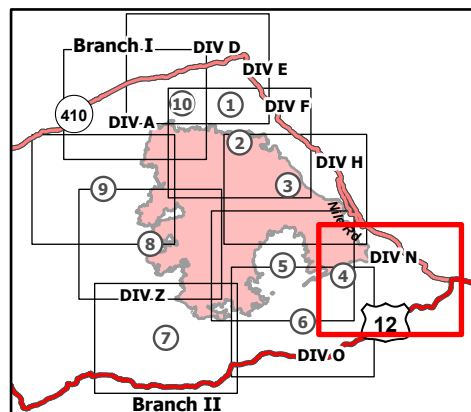
9/2/21

83,647 acres at 8/31/21 1815

Page 4 of 10



- Dip Site
- Helispot
- ) ( Division Break
- || Branch Break
- Drop Point
- ⊙ Fire Station
- ⊙ Water Source
- ⊗ Completed Dozer Line
- ⊗ Completed Fuel Break
- R - Completed Road as Line
- ⊗ UAS Launch and Recovery Zone
- Fire Edge
- ⊗ Administrative FS Boundary
- Wildfire Daily Fire Perimeter





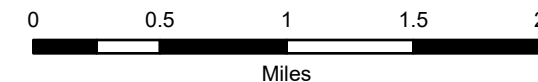
# IAP Map

Schneider Springs  
WA-OWF-000453

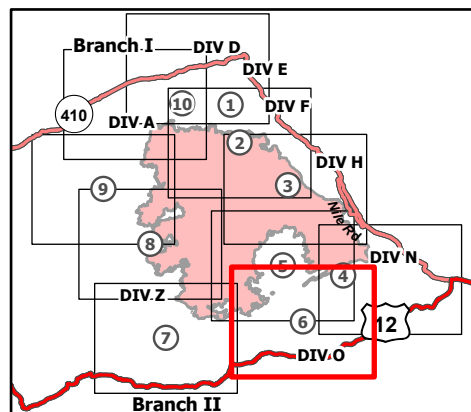
9/2/21

83,647 acres at 8/31/21 1815

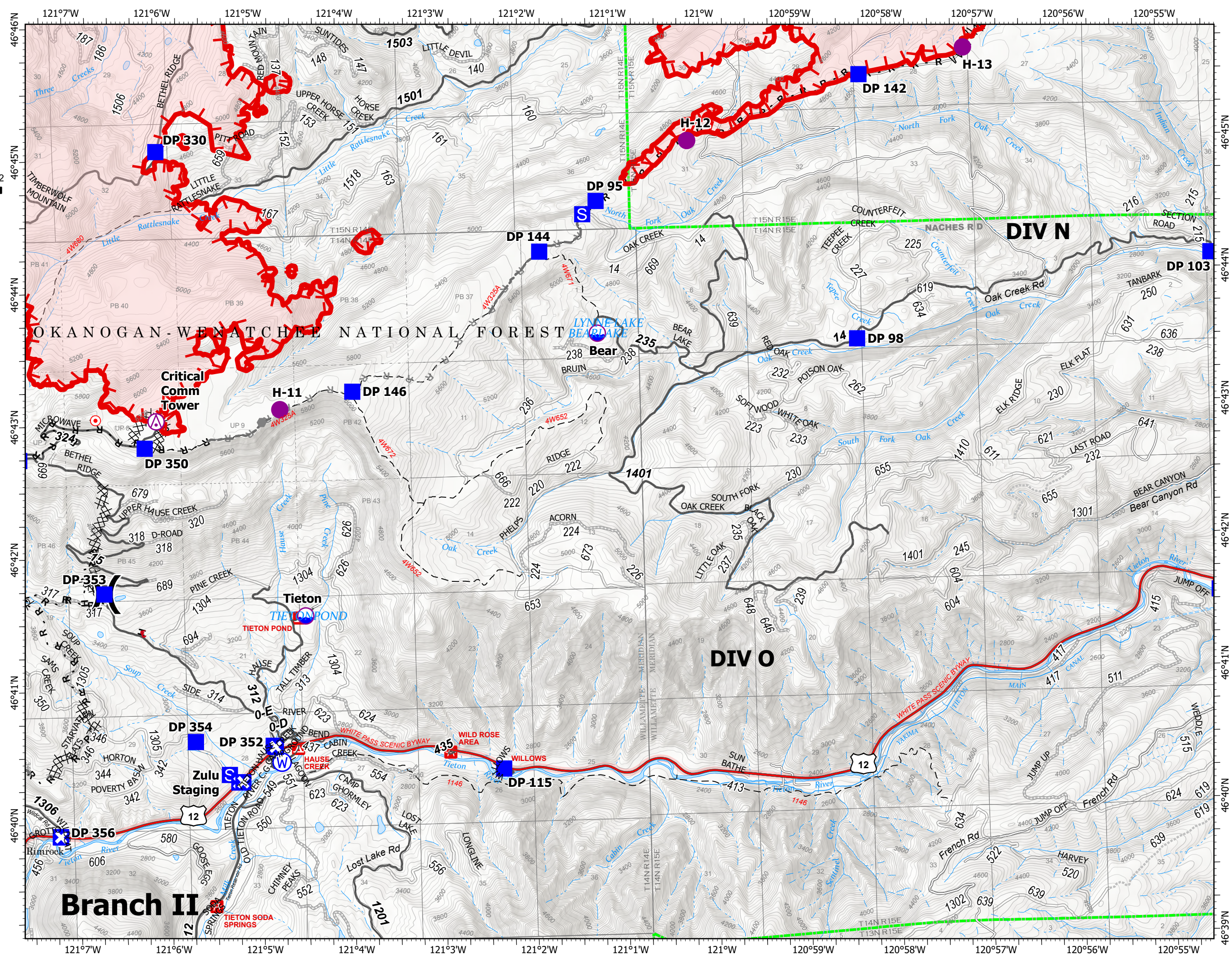
Page 6 of 10



- Aerial Hazard
- Dip Site
- Helispot
- Division Break
- Drop Point
- Closure
- Staging Area
- Hot Spot - Spot Fire
- Other
- Water Source
- Completed Dozer Line
- Completed Fuel Break
- Completed Hand Line
- Completed Road as Line
- Planned Dozer Line
- Planned Hand Line
- Planned Road as Line
- Fence
- Other
- Fire Edge
- Administrative FS Boundary
- Wildfire Daily Fire Perimeter



9/1/2021 2140  
Acres from IR  
North American 1983 Datum.  
Lat/Long Grid



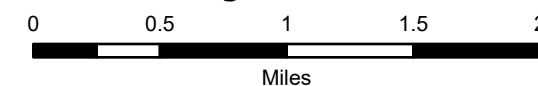
# IAP Map

Schneider Springs  
WA-OWF-000453

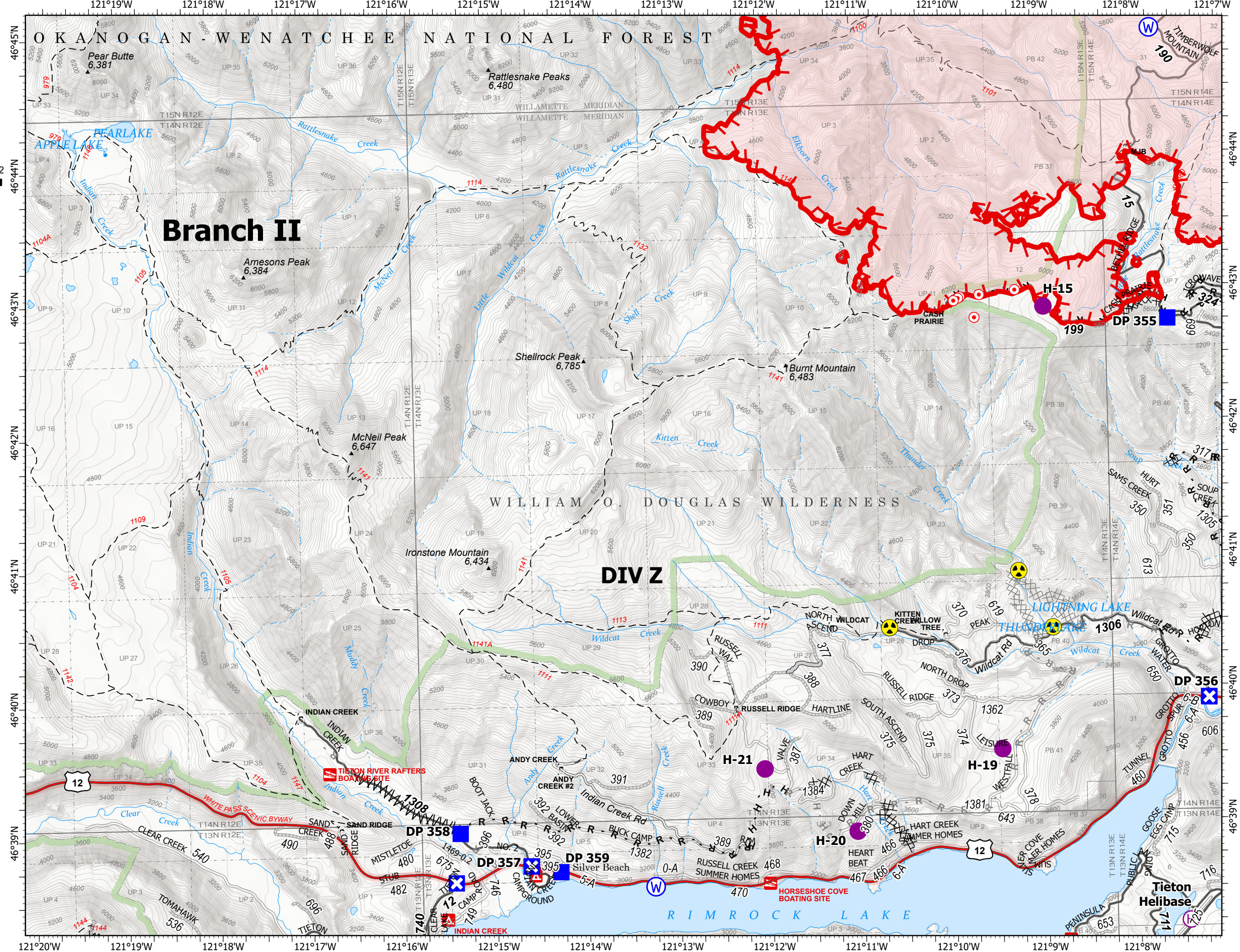
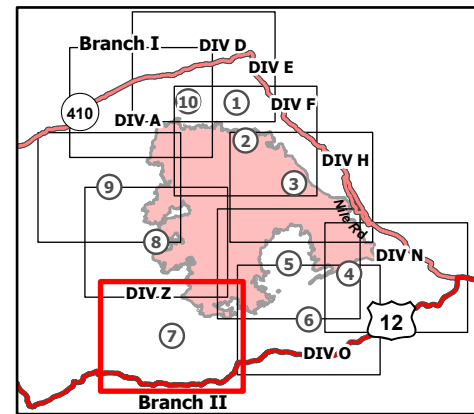
9/2/21

83,647 acres at 8/31/21 1815

Page 7 of 10



- Helispot
- ⊕ Helibase
- ) Division Break
- Drop Point
- ⊠ Closure
- ⊙ Hot Spot - Spot Fire
- ☠ Hazard
- ⊙ Water Source
- ⊗ Completed Dozer Line
- ⊗ Completed Fuel Break
- H - Completed Hand Line
- R - Completed Road as Line
- ⊗ Planned Dozer Line
- H - Planned Hand Line
- R - Planned Road as Line
- Access or Improved Road
- - - Other
- ┌ Fire Edge
- ▭ Administrative FS Boundary
- ▭ FS Wilderness Boundary
- ▭ Wildfire Daily Fire Perimeter





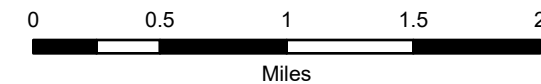
# IAP Map

Schneider Springs  
WA-OWF-000453

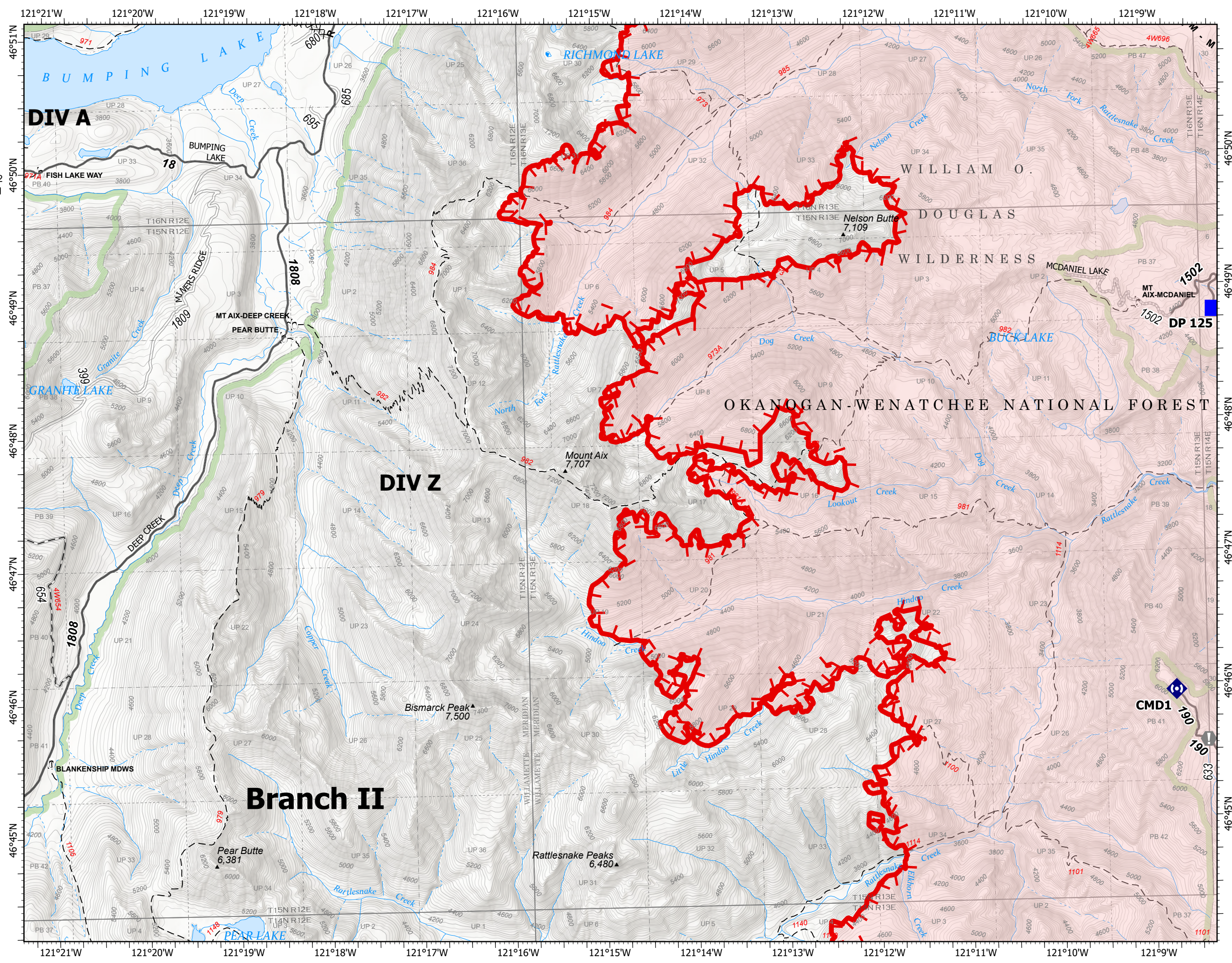
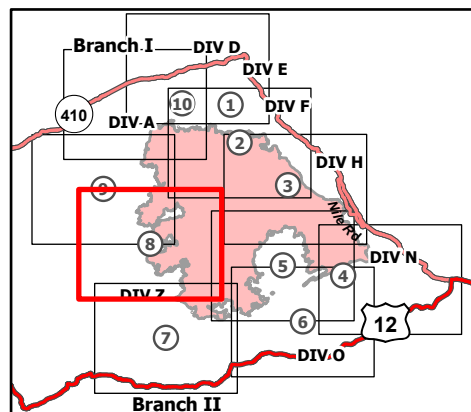
9/2/21

83,647 acres at 8/31/21 1815

Page 8 of 10



- Drop Point
- Value at Risk
- Repeater
- Completed Dozer Line
- Completed Mixed Construction Line
- Completed Road as Line
- Planned Hand Line
- Fire Edge
- Administrative FS Boundary
- FS Wilderness Boundary
- Wildfire Daily Fire Perimeter



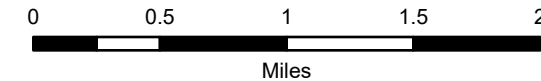
# IAP Map

Schneider Springs  
WA-OWF-000453

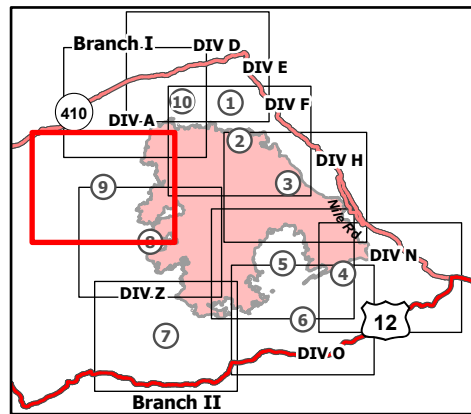
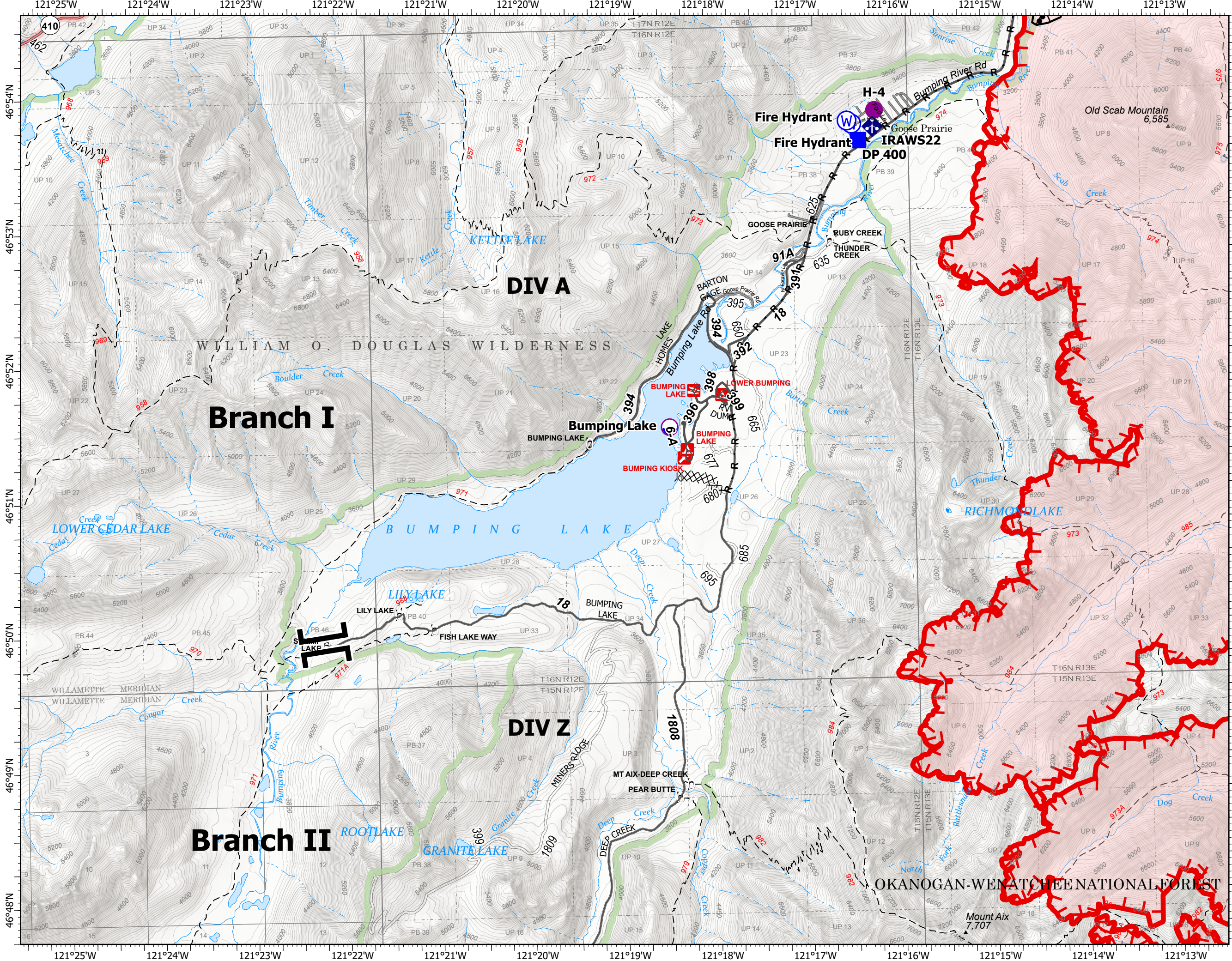
9/2/21

83,647 acres at 8/31/21 1815

Page 9 of 10



- Dip Site
- Helispot
- Branch Break
- Drop Point
- Mobile Weather Unit
- Water Source
- Completed Burnout
- Completed Dozer Line
- Completed Road as Line
- Planned Hand Line
- Fire Edge
- Contained Line
- Administrative FS Boundary
- FS Wilderness Boundary
- Wildfire Daily Fire Perimeter



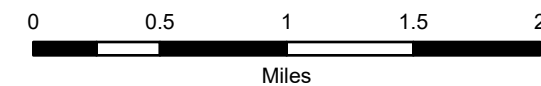
# IAP Map

Schneider Springs  
WA-OWF-000453

9/2/21

83,647 acres at 8/31/21 1815

Page 10 of 10



- Dip Site
- Helispot
- Division Break
- Drop Point
- Closure
- Staging Area
- Lookout
- Value at Risk
- Bridge
- Mobile Weather Unit
- Water Source
- Completed Burnout
- Completed Hand Line
- Completed Road as Line
- Fire Edge
- Contained Line
- Administrative FS Boundary
- FS Wilderness Boundary
- Wildfire Daily Fire Perimeter

