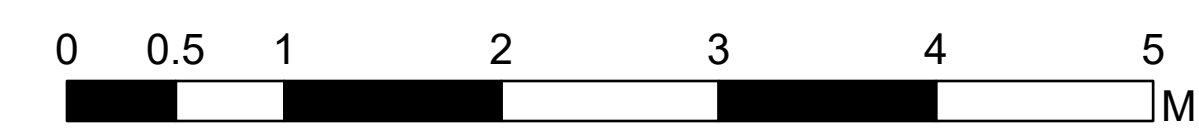


Air Ops Map

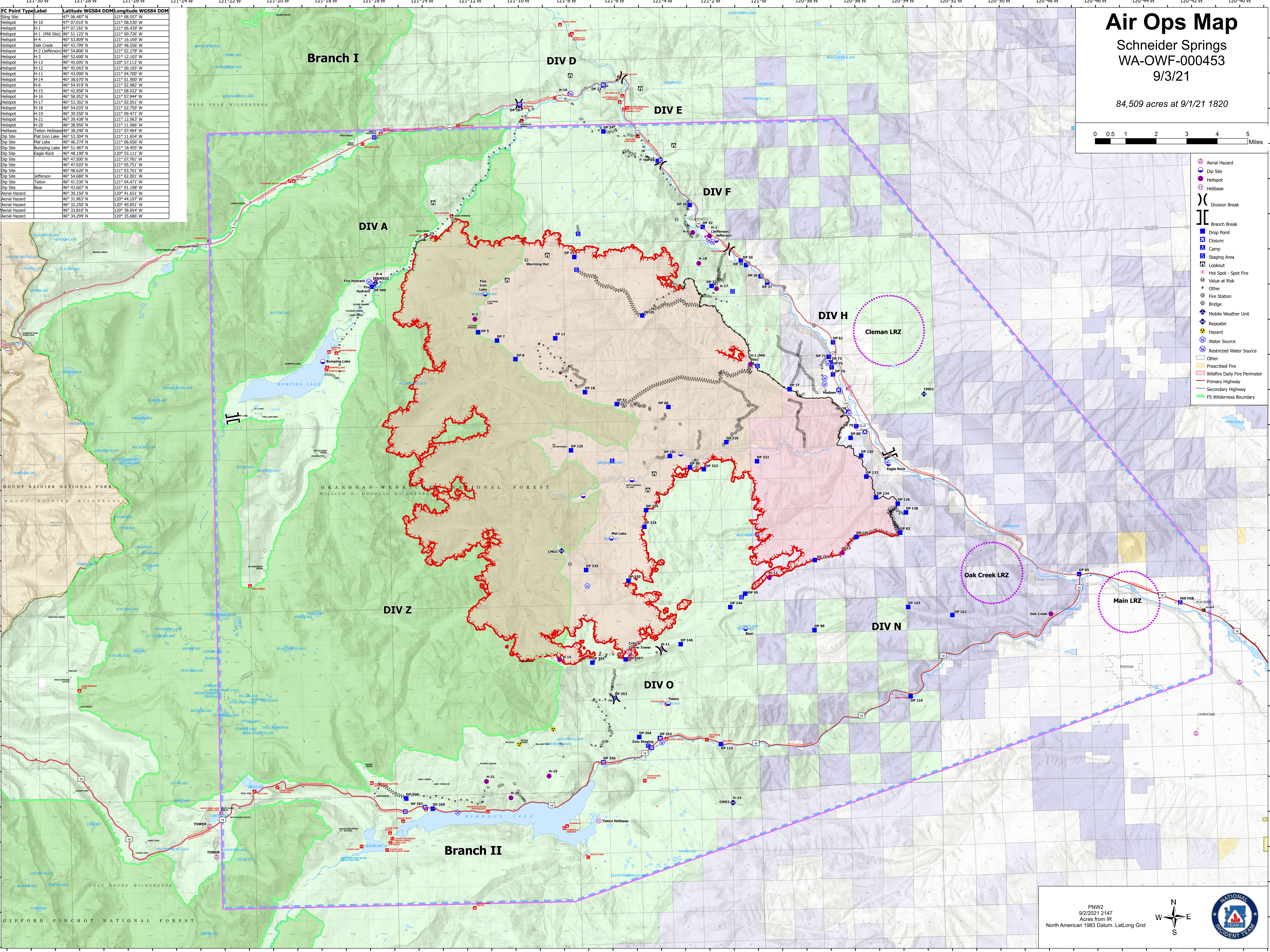
Schneider Springs
WA-OWF-000453
9/3/21

84,509 acres at 9/1/21 1820



- Aerial Hazard
- Dip Site
- Helispot
- Helibase
- Division Break
- Branch Break
- Closure
- Camp
- Staging Area
- Lookout
- Hot Spot - Spot Fire
- Value at Risk
- Other
- Fire Station
- Bridge
- Mobile Weather Unit
- Repeater
- Hazard
- Water Source
- Restricted Water Source
- Other
- Prescribed Fire
- Wildfire Daily Fire Perimeter
- Primary Highway
- Secondary Highway
- FS Wilderness Boundary

FC Point Type/Label	Latitude WGS84 DDM	Longitude WGS84 DDM	
Sling Site	47° 06.487' N	121° 08.557' W	
Helispot	47° 07.010' N	121° 08.530' W	
Helispot	47° 07.192' N	121° 08.439' W	
Helispot	H-1 (Mill Site)	46° 51.125' N	121° 00.226' W
Helispot	H-4	46° 53.809' N	121° 16.169' W
Helispot	Oak Creek	46° 43.799' N	120° 48.556' W
Helispot	H-2 (Jefferson)	46° 54.806' N	121° 02.278' W
Helispot	H-3	46° 52.600' N	121° 12.103' W
Helispot	H-13	46° 45.695' N	120° 57.113' W
Helispot	H-12	46° 45.043' N	121° 00.165' W
Helispot	H-11	46° 43.090' N	121° 04.700' W
Helispot	H-14	46° 38.670' N	121° 01.900' W
Helispot	H-6	46° 54.919' N	121° 02.982' W
Helispot	H-15	46° 42.858' N	121° 08.922' W
Helispot	H-16	46° 58.952' N	121° 07.944' W
Helispot	H-17	46° 53.302' N	121° 02.051' W
Helispot	H-18	46° 54.035' N	121° 02.759' W
Helispot	H-19	46° 39.550' N	121° 09.471' W
Helispot	H-21	46° 39.438' N	121° 12.063' W
Helispot	H-20	46° 38.956' N	121° 11.066' W
Helibase	Tieton Helibase	46° 38.240' N	121° 07.464' W
Dip Site	Flat Iron Lake	46° 34.304' N	121° 11.654' W
Dip Site	Mal Lake	46° 46.274' N	121° 06.656' W
Dip Site	Bumping Lake	46° 51.487' N	121° 18.455' W
Dip Site	Eagle Rock	46° 48.190' N	120° 55.111' W
Dip Site		46° 47.500' N	121° 07.781' W
Dip Site		46° 47.920' N	121° 05.751' W
Dip Site		46° 48.620' N	121° 03.701' W
Dip Site	Jefferson	46° 54.680' N	121° 02.001' W
Dip Site	Tieton	46° 41.530' N	121° 04.471' W
Dip Site	Bear	46° 43.607' N	121° 01.198' W
Aerial Hazard		46° 30.150' N	120° 41.651' W
Aerial Hazard		46° 31.963' N	120° 44.107' W
Aerial Hazard		46° 32.250' N	120° 49.851' W
Aerial Hazard		46° 33.810' N	120° 38.854' W
Aerial Hazard		46° 34.299' N	120° 35.686' W



PNW2
9/2/2021 2147
Acres from IR
North American 1983 Datum, LatLong Grid