

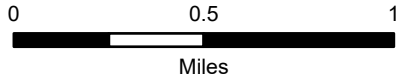
Forest Closure

Schneider Springs
WA-OWF-000453

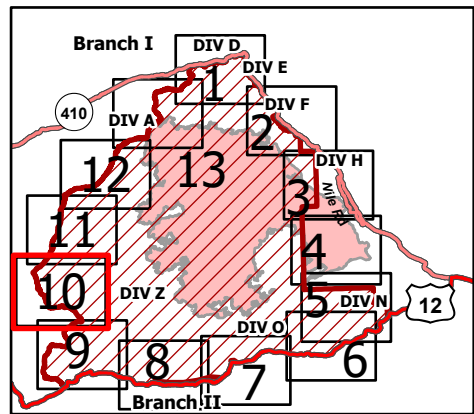
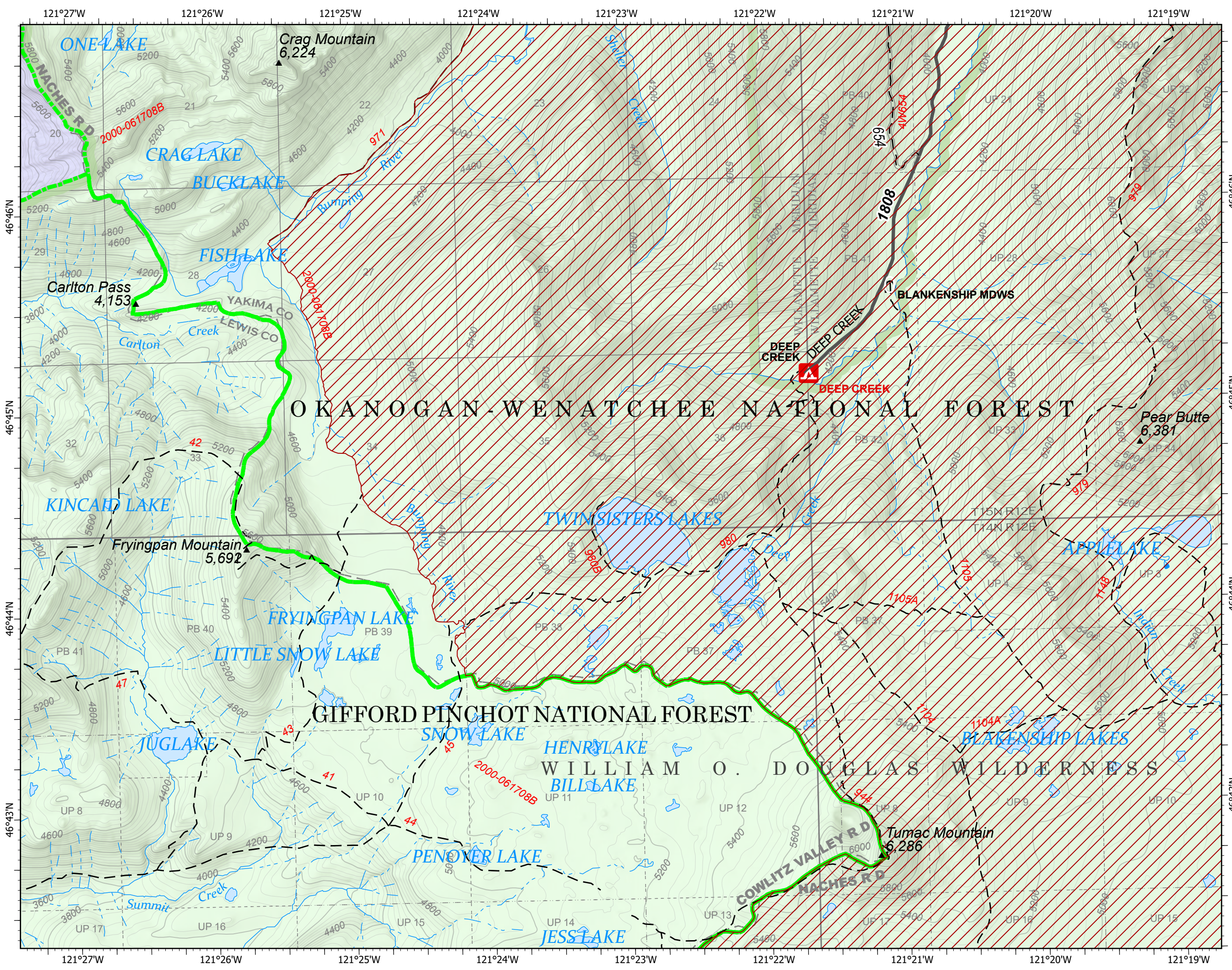
9/3/21

84,509 acres at 9/1/21 1820

Page 10



- FS - Suitable for Passenger Car
- FS - High Clearance/Closed
- Gravel Road
- Unimproved Roads
- Administrative FS Boundary
- FS Wilderness Boundary
- Forest Closure Area
- Bureau of Land Management
- US Forest Service
- National Park Service
- Bureau of Reclamation
- State
- Other Public
- Private



9/2/2021 2233
Acres from IR
North American 1983 Datum.
Lat/Long Grid

