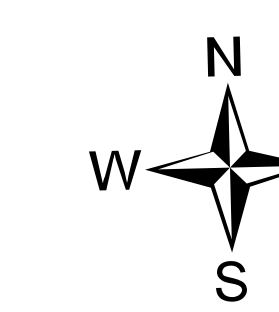


# Forest Closure Map

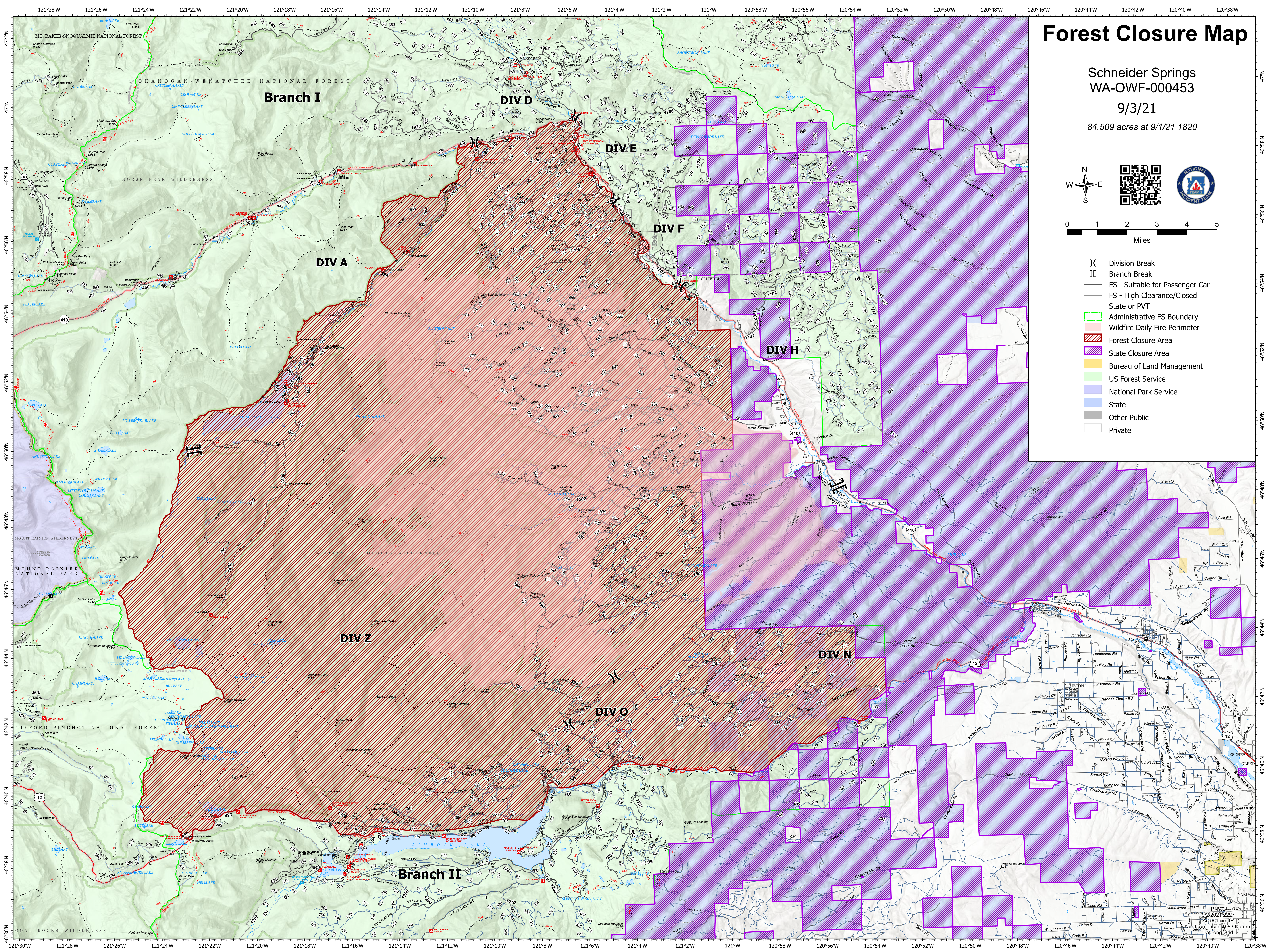
Schneider Springs  
WA-OWF-000453

9/3/21

84,509 acres at 9/1/21 1820



- ( ) Division Break
- || Branch Break
- FS - Suitable for Passenger Car
- FS - High Clearance/Closed
- State or PVT
- Administrative FS Boundary
- Wildfire Daily Fire Perimeter
- ▨ Forest Closure Area
- ▨ State Closure Area
- ▨ Bureau of Land Management
- ▨ US Forest Service
- ▨ National Park Service
- ▨ State
- ▨ Other Public
- ▨ Private



PNW21T1VIEW  
6/2/2021 2:227  
Acres from IR  
North American 1983 Datum  
LatLong Grid