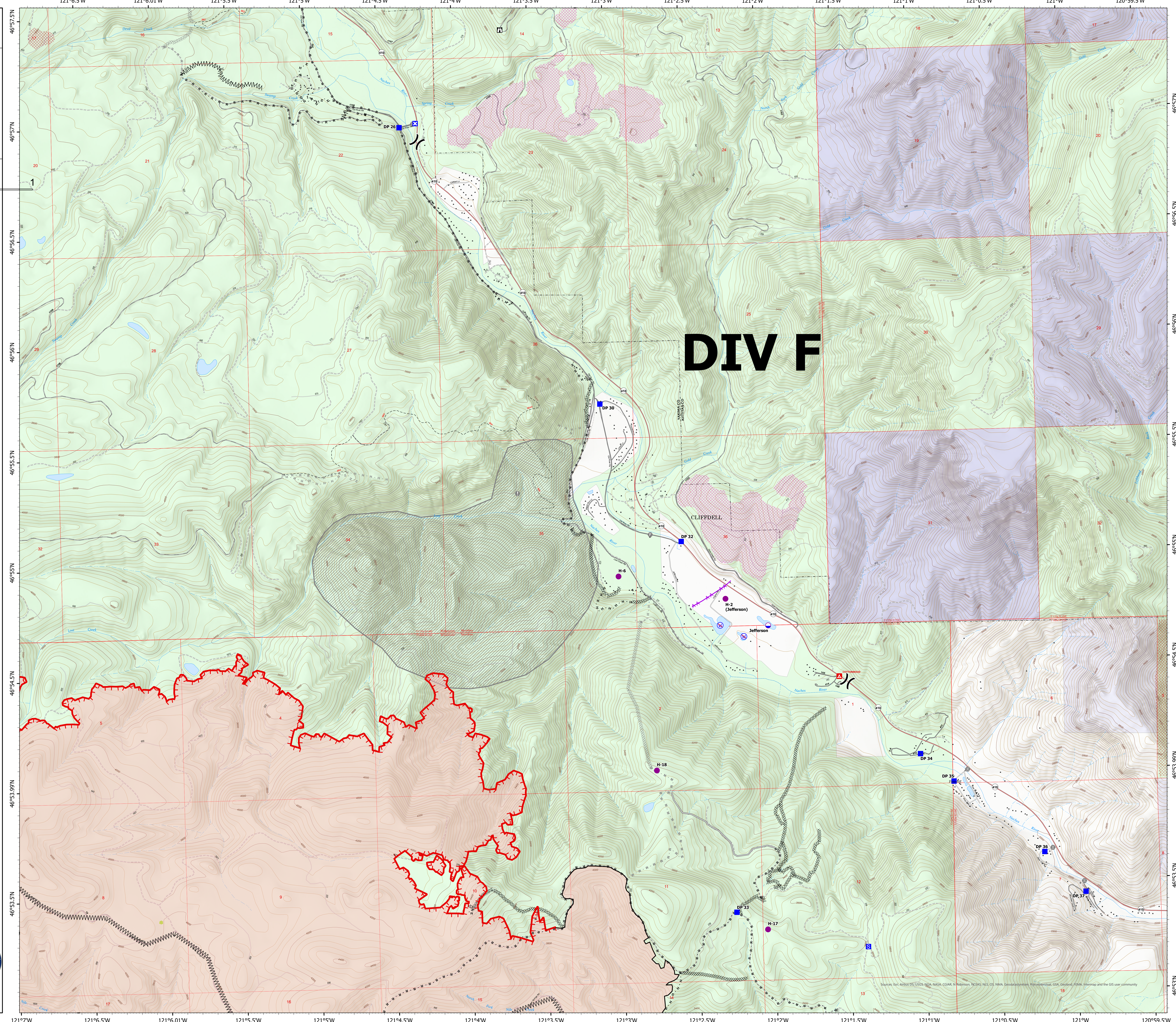


DIV F

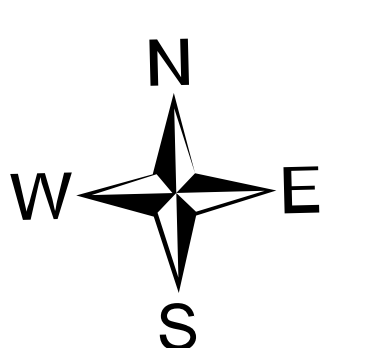
Ops Map
Schneider Springs
WA-OWF-000453
Division Map Book
9/3/21
84,509 acres at 9/1/21 1820



- Dip Site
- Helispot
- Division Break
- Drop Point
- Closure
- Staging Area
- Lookout
- Value at Risk
- Fire Station
- Bridge
- Restricted Water Source
- Completed Dozer Line
- Completed Fuel Break
- Completed Hand Line
- Completed Road as Line
- Planned Dozer Line
- Planned Hand Line
- Planned Mixed Construction Line
- Planned Road as Line
- Access or Improved Road
- Aerial Hazard
- Fire Edge
- Contained Line
- Wildfire Daily Fire Perimeter
- Structures
- Whitebark Pine Trees
- Campground
- Resource Concern
- Fire Fuels Treatments
- Mechanical Fuels Treatments
- Forest Service Land
- State Public Lands
- Other State Lands



DIV F



PNW2
9/2/2021 2209
Acres from IR
North American 1983 Datum, Lat/Long
Grid



Source: Esri, AIRPH, DS, USGS, NOAA, CGAR, N, Robinson, NCTAS, NLS, OS, NMA, Geodatosystem, Purnell, NCHS, GIB, Geovivo, JFM, Intermap and the GIS user community