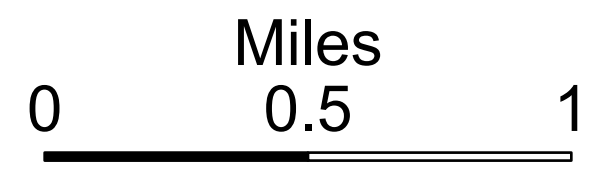


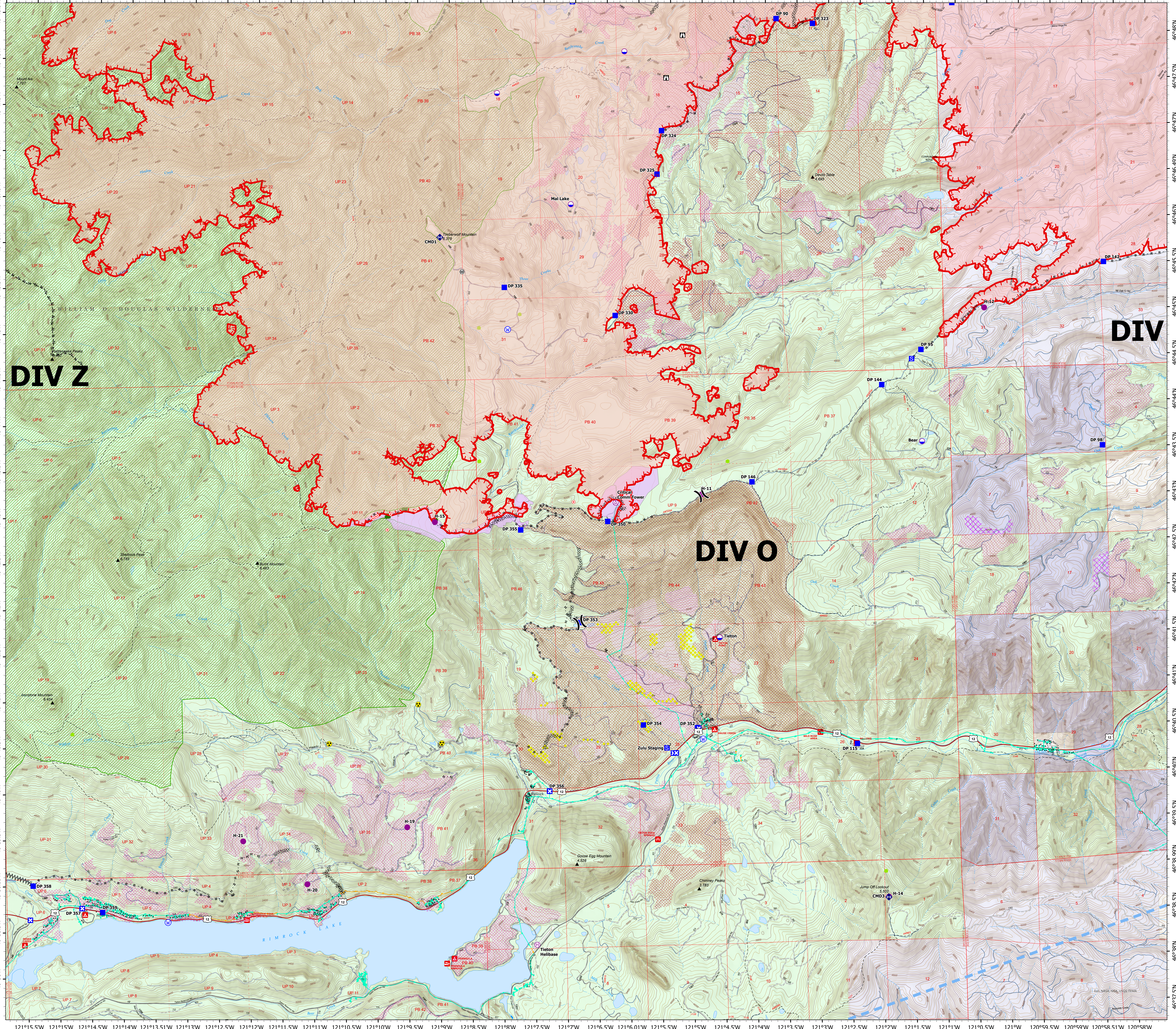
**DIV O**

# Ops Map

Schneider Springs  
WA-OWF-000453  
Division Map Book  
9/3/21  
84,509 acres at 9/1/21 1820



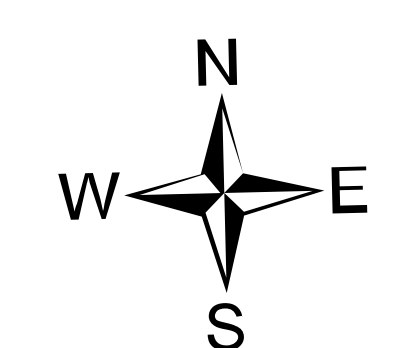
- Aerial Hazard
- Dip Site
- Helispot
- Helibase
- Division Break
- Drop Point
- Closure
- Staging Area
- Lookout
- Hot Spot - Spot Fire
- Value at Risk
- Repeater
- Hazard
- Water Source
- Completed Dozer Line
- Completed Fuel Break
- Completed Hand Line
- Completed Road as Line
- Planned Dozer Line
- Planned Hand Line
- Planned Road as Line
- Access or Improved Road
- Temporary Flight Restriction
- Fire Edge
- Natural Fuel Break
- Wildfire Daily Fire Perimeter
- Structures
- Seed Trees
- Whitebark Pine Trees
- Campground
- Picnic Site
- Boating Site
- Above Ground Power Lines
- Below Ground Power Lines
- State or PVT
- African Wiregrass
- Whitebark Pine Polygons
- Fire Fuels Treatments
- Mechanical Fuels Treatments
- DNR Fuel Treatments
- Federal Wilderness Boundary
- Forest Service Land
- State Public Lands
- Other State Lands
- Other Federal Lands
- Private; Local Government; Undesignated



**DIV**

**DIV O**

**DIV Z**



PNW2  
9/2/2021 2213  
Acres from IR  
North American 1983 Datum, Lat/Long  
Grid

