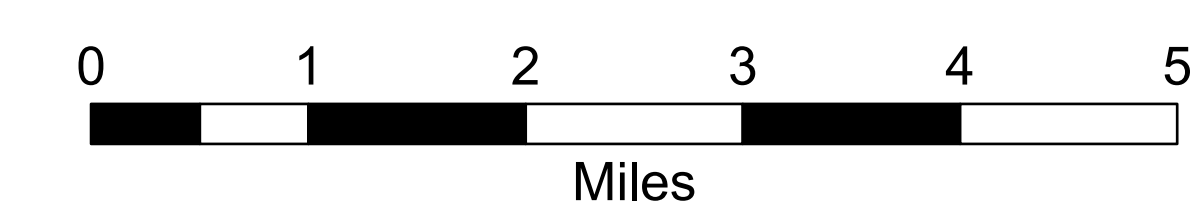
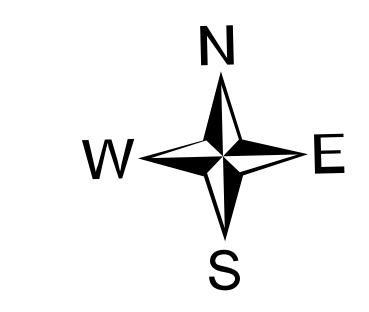


# Transportation Map

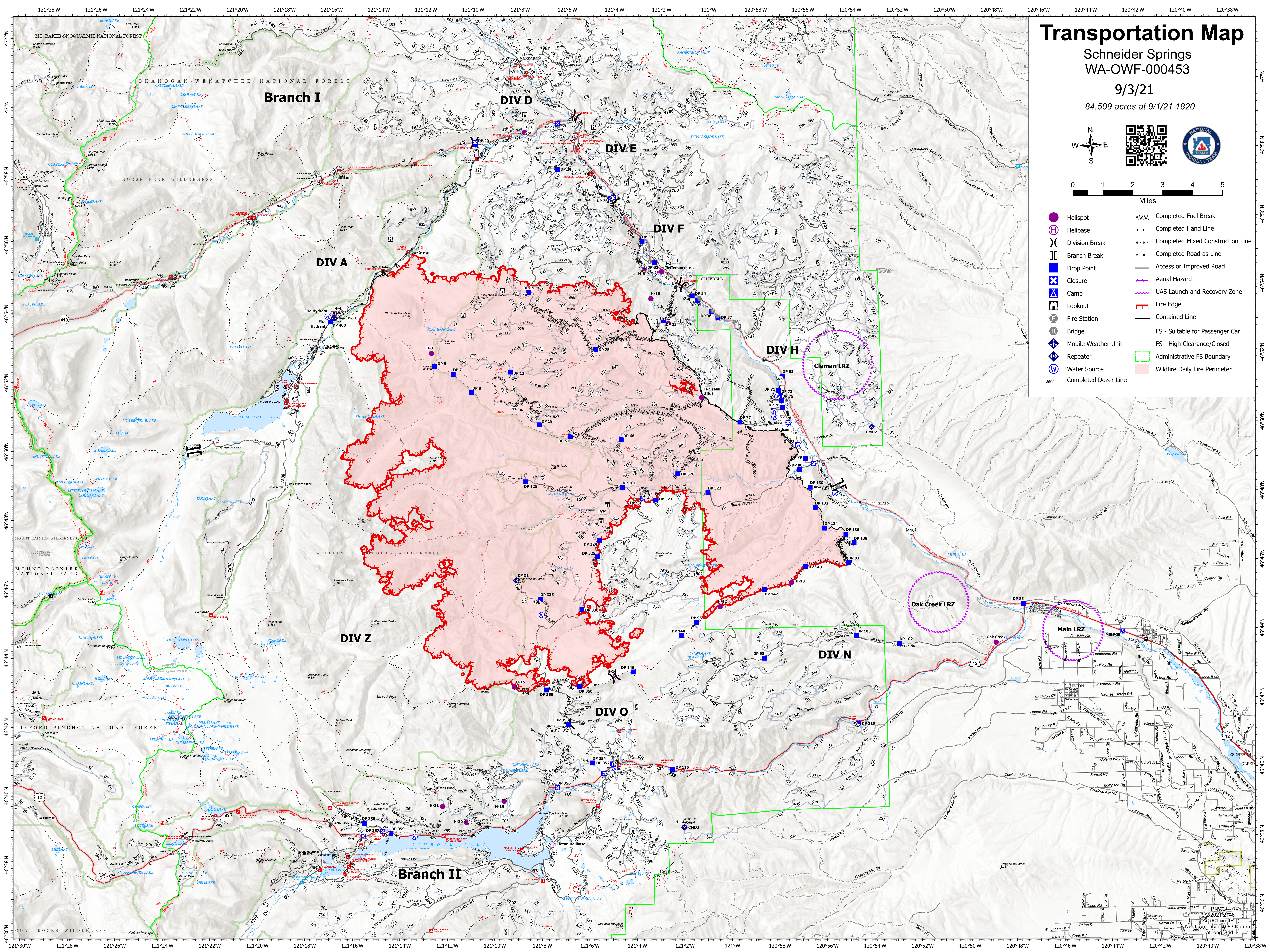
Schneider Springs  
WA-OWF-000453

9/3/21

84,509 acres at 9/1/21 1820



- Helispot
- ⊕ Helibase
- ⌋ Branch Break
- Drop Point
- ⊗ Closure
- ⛑ Camp
- 🏠 Lookout
- 🔥 Fire Station
- 🌐 Bridge
- 📶 Repeater
- 💧 Water Source
- ⊗ Completed Dozer Line
- Completed Fuel Break
- - - Completed Hand Line
- · - Completed Mixed Construction Line
- · - Completed Road as Line
- Access or Improved Road
- ⚡ Aerial Hazard
- ⚡ UAS Launch and Recovery Zone
- 🔥 Fire Edge
- Contained Line
- FS - Suitable for Passenger Car
- FS - High Clearance/Closed
- 🟩 Administrative FS Boundary
- 🟪 Wildfire Daily Fire Perimeter



MT. BAKER-SNOQUALMIE NATIONAL FOREST  
OKANOGAN-WENATCHEE NATIONAL FOREST  
NORSE PEAK WILDERNESS  
MOUNT RAINIER NATIONAL PARK  
GIFFORD PINCHOT NATIONAL FOREST  
GOAT ROCKS WILDERNESS

121°28'W 121°26'W 121°24'W 121°22'W 121°20'W 121°18'W 121°16'W 121°14'W 121°12'W 121°10'W 121°8'W 121°6'W 121°4'W 121°2'W 121°W 120°58'W 120°56'W 120°54'W 120°52'W 120°50'W 120°48'W 120°46'W 120°44'W 120°42'W 120°40'W 120°38'W

47°N  
46°58'N  
46°56'N  
46°54'N  
46°52'N  
46°50'N  
46°48'N  
46°46'N  
46°44'N  
46°42'N  
46°40'N  
46°38'N  
46°36'N  
46°34'N  
46°32'N  
46°30'N

121°30'W 121°28'W 121°26'W 121°24'W 121°22'W 121°20'W 121°18'W 121°16'W 121°14'W 121°12'W 121°10'W 121°8'W 121°6'W 121°4'W 121°2'W 121°W 120°58'W 120°56'W 120°54'W 120°52'W 120°50'W 120°48'W 120°46'W 120°44'W 120°42'W 120°40'W 120°38'W