

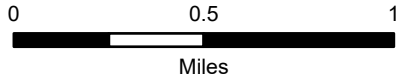
Forest Closure

Schneider Springs
WA-OWF-000453

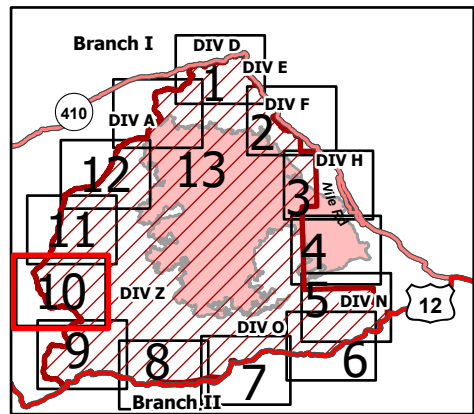
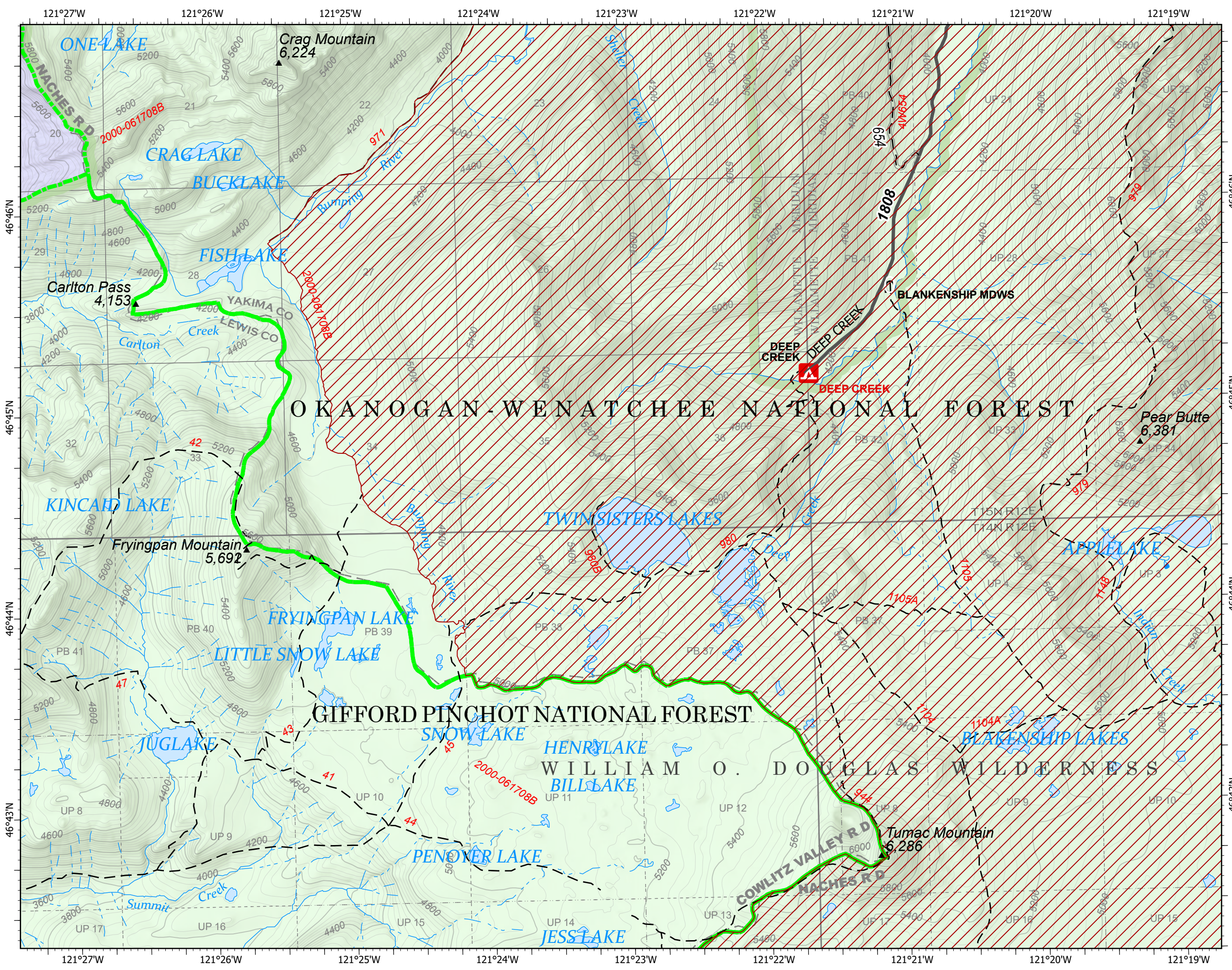
9/4/21

85,639 acres at 9/2/21 2305

Page 10



- FS - Suitable for Passenger Car
- FS - High Clearance/Closed
- Gravel Road
- Unimproved Roads
- Administrative FS Boundary
- FS Wilderness Boundary
- Forest Closure Area
- Bureau of Land Management
- US Forest Service
- National Park Service
- Bureau of Reclamation
- State
- Other Public
- Private



9/3/2021 2129
Acres from IR
North American 1983 Datum.
Lat/Long Grid

