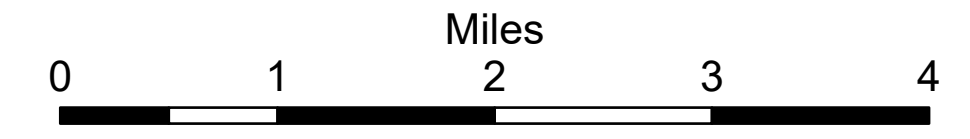


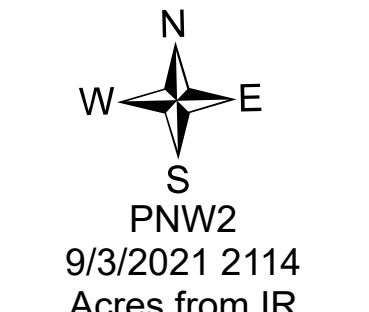
Operations Map

Schneider Springs
WA-OWF-000453
9/4/21

85,639 acres at 9/2/21 2305



- Aerial Hazard
- Dip Site
- Helibase
- Division Break
- Branch Break
- Drop Point
- Closure
- Camp
- Staging Area
- Lookout
- Value at Risk
- Fire Station
- Bridge
- Mobile Weather Unit
- Repeater
- Hazard
- Water Source
- Restricted Water Source
- Completed Dozer Line
- Completed Fuel Break
- Completed Hand Line
- Completed Mixed Construction Line
- Completed Road as Line
- Planned Dozer Line
- H-H Planned Hand Line
- R-H Planned Road as Line
- Access or Improved Road
- Natural Fuel Break
- Wildfire Daily Fire Perimeter
- Structures
- Whitebark Pine Trees
- Seed Trees
- Above Ground Power Lines
- Below Ground Power Lines
- FS - Suitable for Passenger Car
- FS - High Clearance/Closed
- State/Private Roads
- Fire Fuels Treatments
- Mechanical Fuels Treatments
- DNR Fuels Treatments
- African Wiregrass
- Past Fires
- Whitebark Pine Polygons
- Resource Concern
- Administrative FS Boundary
- Federal Wilderness Boundary



PNW2
9/3/2021 2114
Acres from IR
North American 1983 Datum,
Lat/Long Grid

