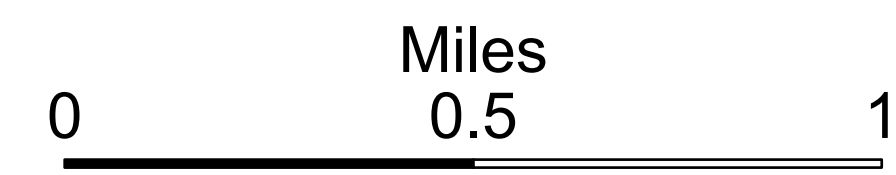


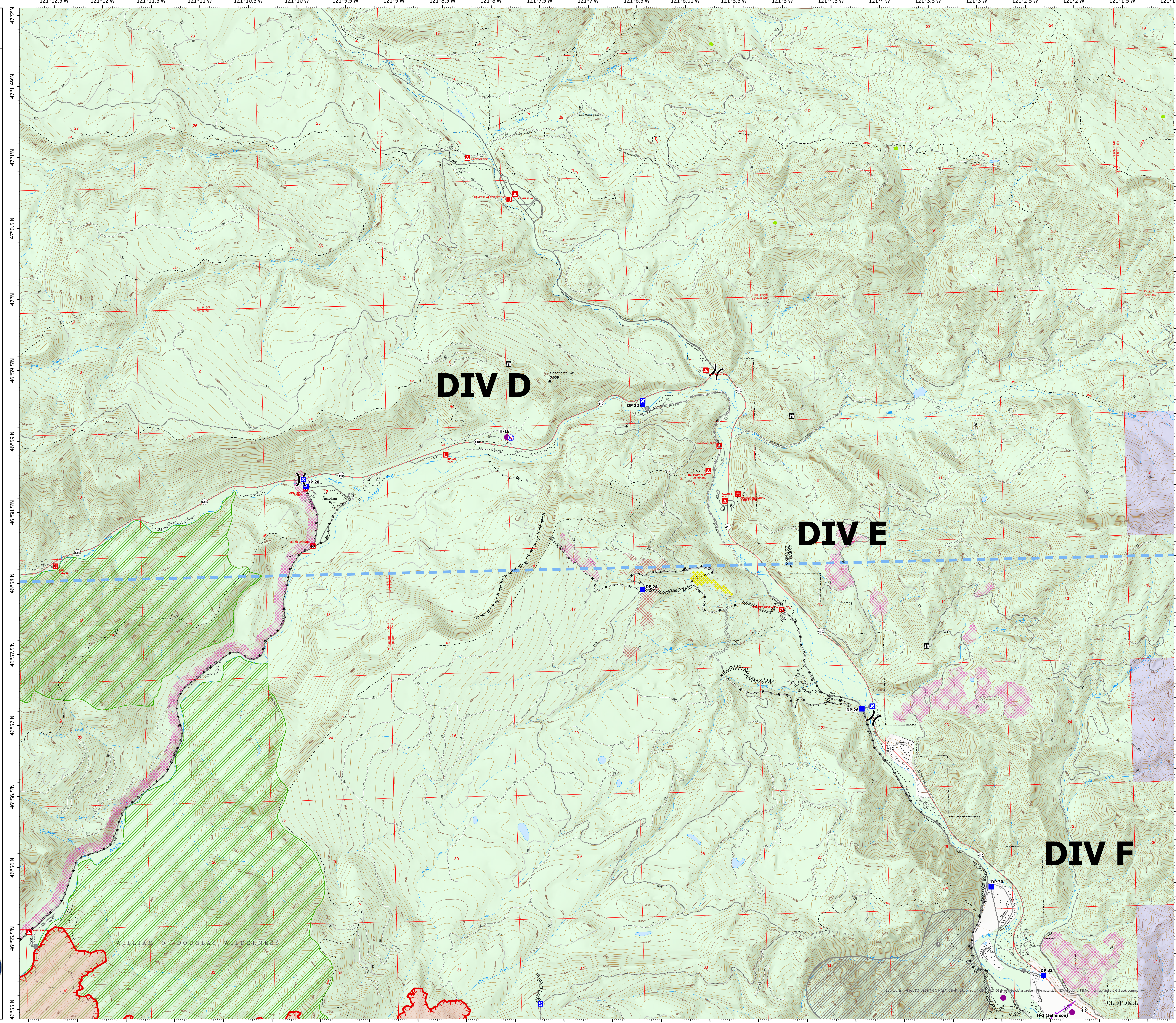
DIV D/E

Ops Map

Schneider Springs
WA-OWF-000453
Division Map Book
9/4/21
85,639 acres at 9/2/21 2305



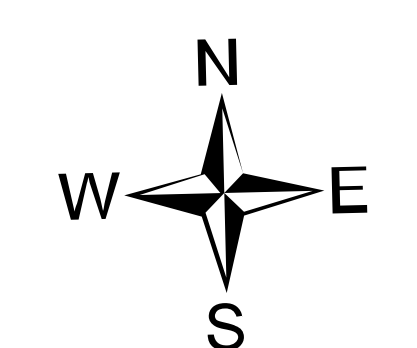
- Helispot
- ⌋ Division Break
- Drop Point
- ⊠ Closure
- ⊠ Staging Area
- ⊠ Lookout
- ⊙ Value at Risk
- ⊙ Fire Station
- ⊙ Bridge
- ⊙ Restricted Water Source
- ⊘ Completed Dozer Line
- ⊘ Completed Fuel Break
- ⊘ Completed Hand Line
- ⊘ Completed Road as Line
- ⊘ Planned Dozer Line
- ⊘ Planned Hand Line
- ⊘ Planned Road as Line
- Access or Improved Road
- ⚡ Aerial Hazard
- ⊠ Temporary Flight Restriction
- Fire Edge
- Natural Fuel Break
- Wildfire Daily Fire Perimeter
- Structures
- Whitebark Pine Trees
- ▲ Campground
- ⊠ Group Campground
- ⊠ Picnic Site
- ⊠ African Wiregrass
- ⊠ Resource Concern
- ⊠ Fire Fuels Treatments
- ⊠ Mechanical Fuels Treatments
- ⊠ Federal Wilderness Boundary
- ⊠ Forest Service Land
- ⊠ State Public Lands



DIV D

DIV E

DIV F



PNW2
9/3/2021 2118
Acres from IR
North American 1983 Datum, Lat/Long
Grid



CLIFFDELL