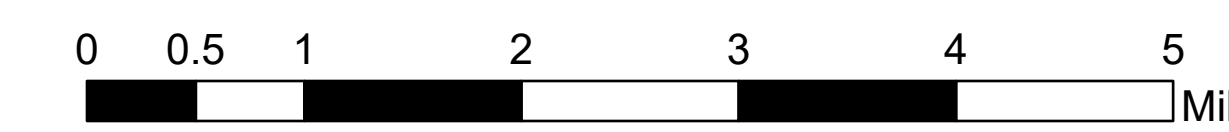


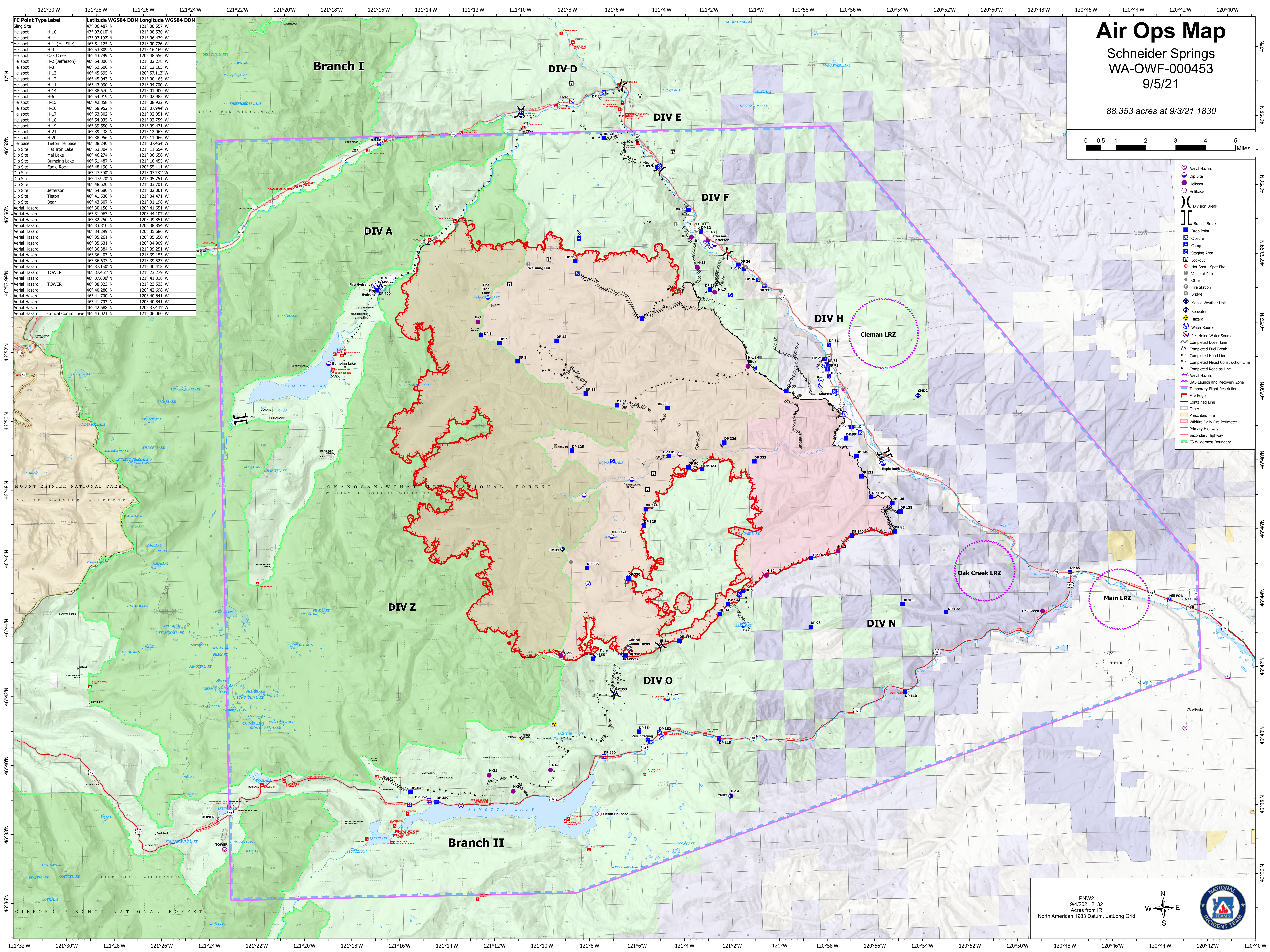
Air Ops Map

Schneider Springs
WA-OWF-000453
9/5/21

88,353 acres at 9/3/21 1830



FC Point Type	Label	Latitude WGS84	DDM	Longitude WGS84	DDM
Slings Site		47° 06.487' N		121° 08.557' W	
Helispot	H-10	47° 07.010' N		121° 08.530' W	
Helispot	H-1	47° 07.192' N		121° 06.439' W	
Helispot	H-1 (Mill Site)	46° 51.125' N		121° 00.726' W	
Helispot	H-4	46° 53.809' N		121° 16.169' W	
Helispot	Oak Creek	46° 43.799' N		120° 48.556' W	
Helispot	H-2 (Jefferson)	46° 54.806' N		121° 02.278' W	
Helispot	H-3	46° 52.600' N		121° 12.103' W	
Helispot	H-13	46° 45.695' N		120° 57.113' W	
Helispot	H-12	46° 45.959' N		121° 00.165' W	
Helispot	H-11	46° 43.090' N		121° 04.700' W	
Helispot	H-14	46° 38.670' N		121° 01.900' W	
Helispot	H-6	46° 54.919' N		121° 02.982' W	
Helispot	H-15	46° 42.858' N		121° 08.922' W	
Helispot	H-16	46° 58.952' N		121° 07.944' W	
Helispot	H-17	46° 53.300' N		121° 02.051' W	
Helispot	H-18	46° 54.035' N		121° 02.759' W	
Helispot	H-19	46° 39.550' N		121° 09.471' W	
Helispot	H-21	46° 39.438' N		121° 12.063' W	
Helispot	H-20	46° 38.956' N		121° 11.066' W	
Helibase	Tieton Helibase	46° 38.240' N		121° 07.464' W	
Dip Site	Flat Iron Lake	46° 46.274' N		121° 06.656' W	
Dip Site	Mal Lake	46° 46.274' N		121° 06.656' W	
Dip Site	Bumping Lake	46° 51.487' N		121° 18.455' W	
Dip Site	Eagle Rock	46° 48.190' N		120° 55.111' W	
Dip Site		46° 47.500' N		121° 07.781' W	
Dip Site		46° 47.920' N		121° 05.751' W	
Dip Site		46° 48.620' N		121° 03.701' W	
Dip Site	Jefferson	46° 54.680' N		121° 02.001' W	
Dip Site	Tieton	46° 41.530' N		121° 04.471' W	
Dip Site	Bear	46° 43.607' N		121° 01.198' W	
Aerial Hazard		46° 30.150' N		120° 41.651' W	
Aerial Hazard		46° 31.963' N		120° 44.107' W	
Aerial Hazard		46° 32.250' N		120° 49.851' W	
Aerial Hazard		46° 33.810' N		120° 38.854' W	
Aerial Hazard		46° 34.299' N		120° 35.686' W	
Aerial Hazard		46° 35.261' N		120° 35.650' W	
Aerial Hazard		46° 35.631' N		120° 34.909' W	
Aerial Hazard		46° 36.384' N		121° 39.251' W	
Aerial Hazard		46° 36.403' N		121° 39.155' W	
Aerial Hazard		46° 36.633' N		121° 39.523' W	
Aerial Hazard		46° 37.150' N		121° 40.418' W	
Aerial Hazard	TOWER	46° 37.451' N		121° 23.279' W	
Aerial Hazard		46° 37.600' N		121° 41.318' W	
Aerial Hazard	TOWER	46° 38.323' N		121° 23.533' W	
Aerial Hazard		46° 40.280' N		120° 42.698' W	
Aerial Hazard		46° 41.700' N		120° 40.841' W	
Aerial Hazard		46° 41.703' N		120° 40.841' W	
Aerial Hazard		46° 42.688' N		120° 37.441' W	
Aerial Hazard	Critical Comm Tower	46° 43.021' N		121° 06.060' W	



- Aerial Hazard
- Dip Site
- Helispot
- Helibase
- Division Break
- Branch Break
- Drop Point
- Closure
- Camp
- Staging Area
- Lookout
- Hot Spot - Spot Fire
- Value at Risk
- Other
- Fire Station
- Bridge
- Mobile Weather Unit
- Repeater
- Hazard
- Water Source
- Restricted Water Source
- Completed Dozer Line
- Completed Fuel Break
- Completed Hand Line
- Completed Mixed Construction Line
- Completed Road as Line
- Aerial Hazard
- UAS Launch and Recovery Zone
- Temporary Flight Restriction
- Fire Edge
- Contained Line
- Other
- Prescribed Fire
- Wildfire Daily Fire Perimeter
- Primary Highway
- Secondary Highway
- FS Wilderness Boundary

PNW2
9/4/2021 2132
Acres from IR
North American 1983 Datum, LatLong Grid