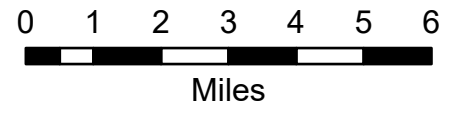


# IAP Map Index

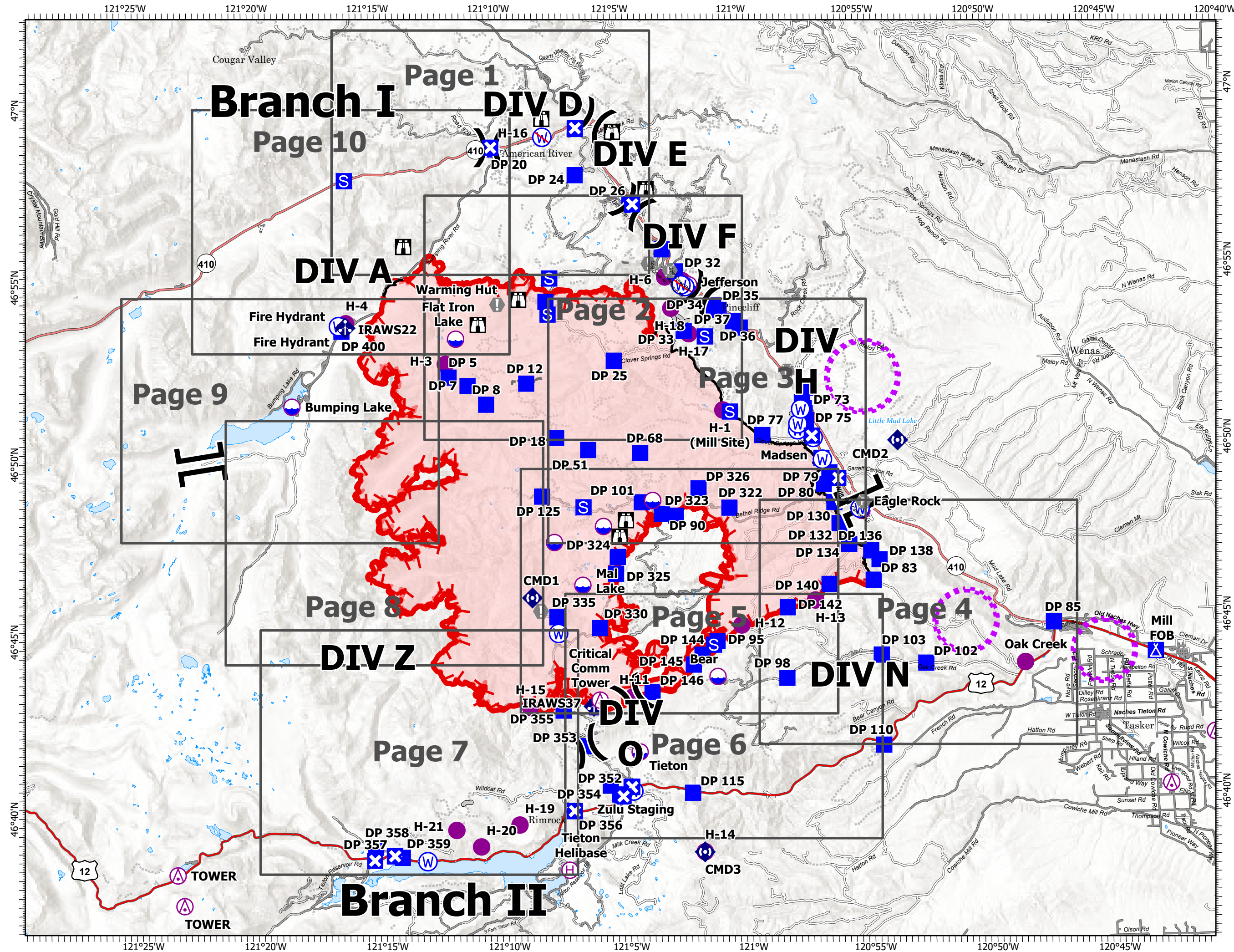
Schneider Springs  
WA-OWF-000453

9/5/21

88,353 acres at 9/3/21 1830



- Aerial Hazard
- Dip Site
- Helispot
- Helibase
- Division Break
- Branch Break
- Drop Point
- Closure
- Camp
- Staging Area
- Lookout
- Value at Risk
- Fire Station
- Mobile Weather Unit
- Repeater
- Water Source
- Restricted Water Source
- Access or Improved Road
- Fence
- Other
- Aerial Hazard
- UAS Launch and Recovery Zone
- Fire Edge
- Contained Line
- Wildfire Daily Fire Perimeter
- Grid Index



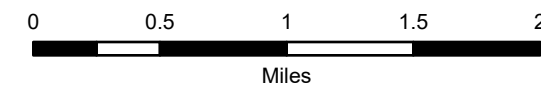
# IAP Map

Schneider Springs  
WA-OWF-000453

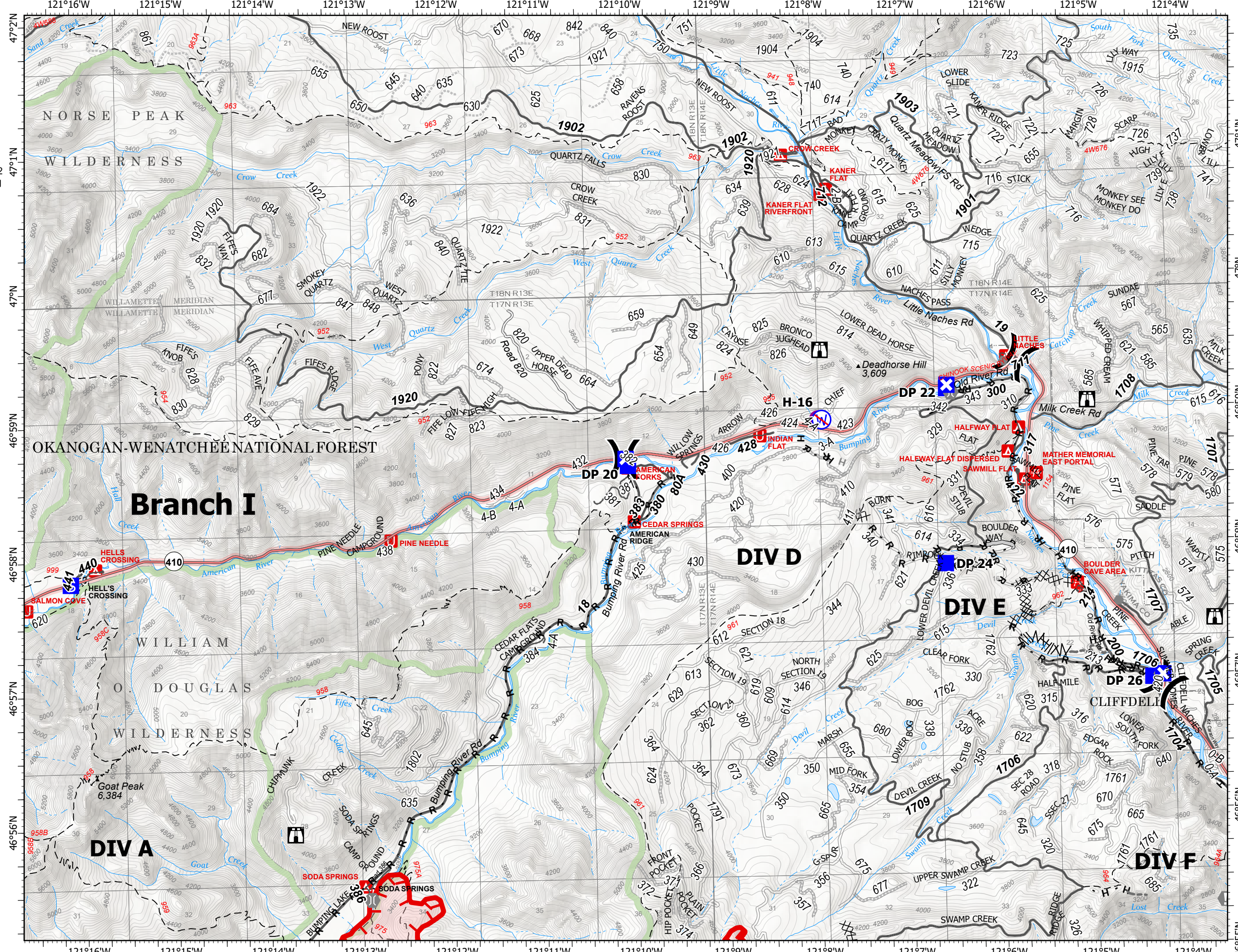
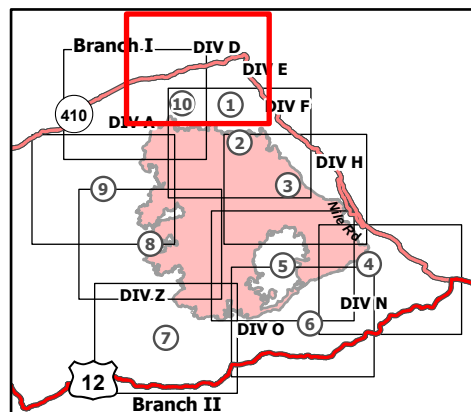
9/5/21

88,353 acres at 9/3/21 1830

Page 1 of 10



- Helispot
- ) Division Break
- Drop Point
- ⊠ Closure
- Ⓢ Staging Area
- 🏠 Lookout
- ⚠ Value at Risk
- Other
- 🌉 Bridge
- Ⓜ Restricted Water Source
- ⓧⓧ Completed Dozer Line
- Ⓜ Completed Fuel Break
- H - Completed Hand Line
- R - Completed Road as Line
- H - Planned Hand Line
- Access or Improved Road
- - - Other
- 🔴 Fire Edge
- 🟢 Administrative FS Boundary
- 🟡 FS Wilderness Boundary
- 🔴 Wildfire Daily Fire Perimeter



# IAP Map

Schneider Springs  
WA-OWF-000453

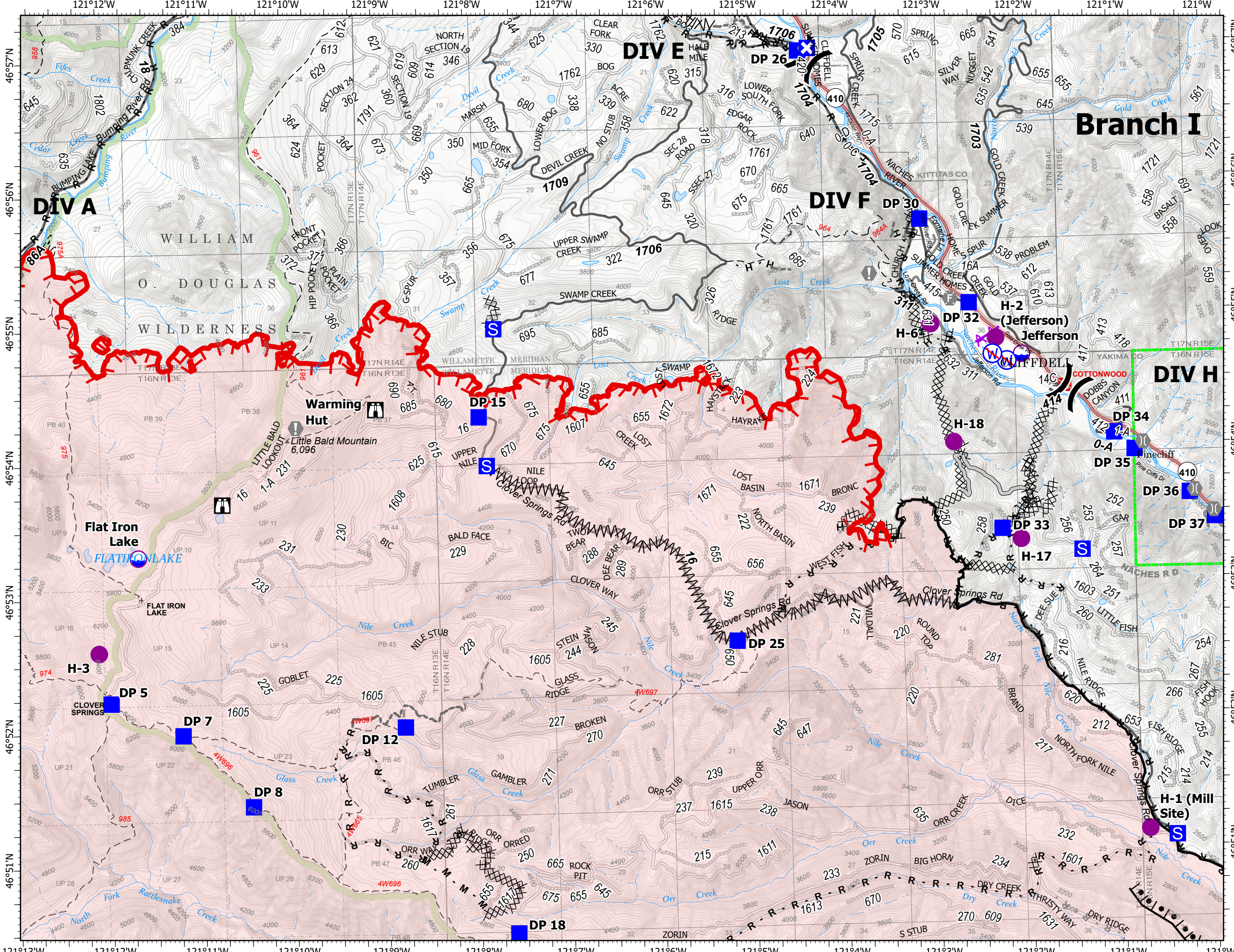
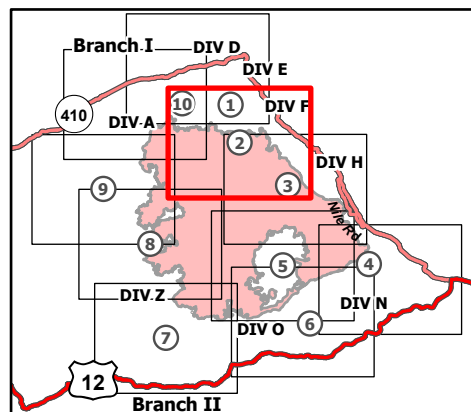
9/5/21

88,353 acres at 9/3/21 1830

Page 2 of 10



- Dip Site
- Helispot
- Division Break
- Drop Point
- Closure
- Staging Area
- Lookout
- Value at Risk
- Fire Station
- Bridge
- Restricted Water Source
- Completed Burnout
- Completed Dozer Line
- Completed Fuel Break
- Completed Hand Line
- Completed Mixed Construction Line
- Completed Road as Line
- Planned Road as Line
- Access or Improved Road
- Other
- Aerial Hazard
- Fire Edge
- Contained Line
- Administrative FS Boundary
- FS Wilderness Boundary
- Wildfire Daily Fire Perimeter



## Branch I

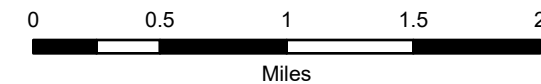
# IAP Map

Schneider Springs  
WA-OWF-000453

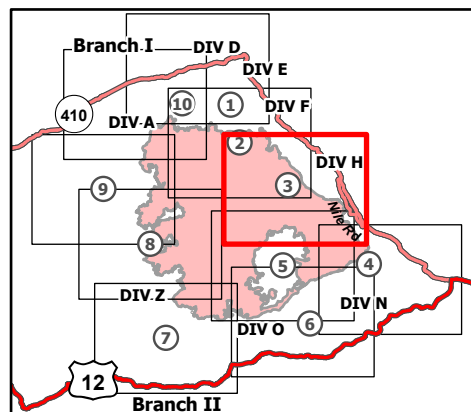
9/5/21

88,353 acres at 9/3/21 1830

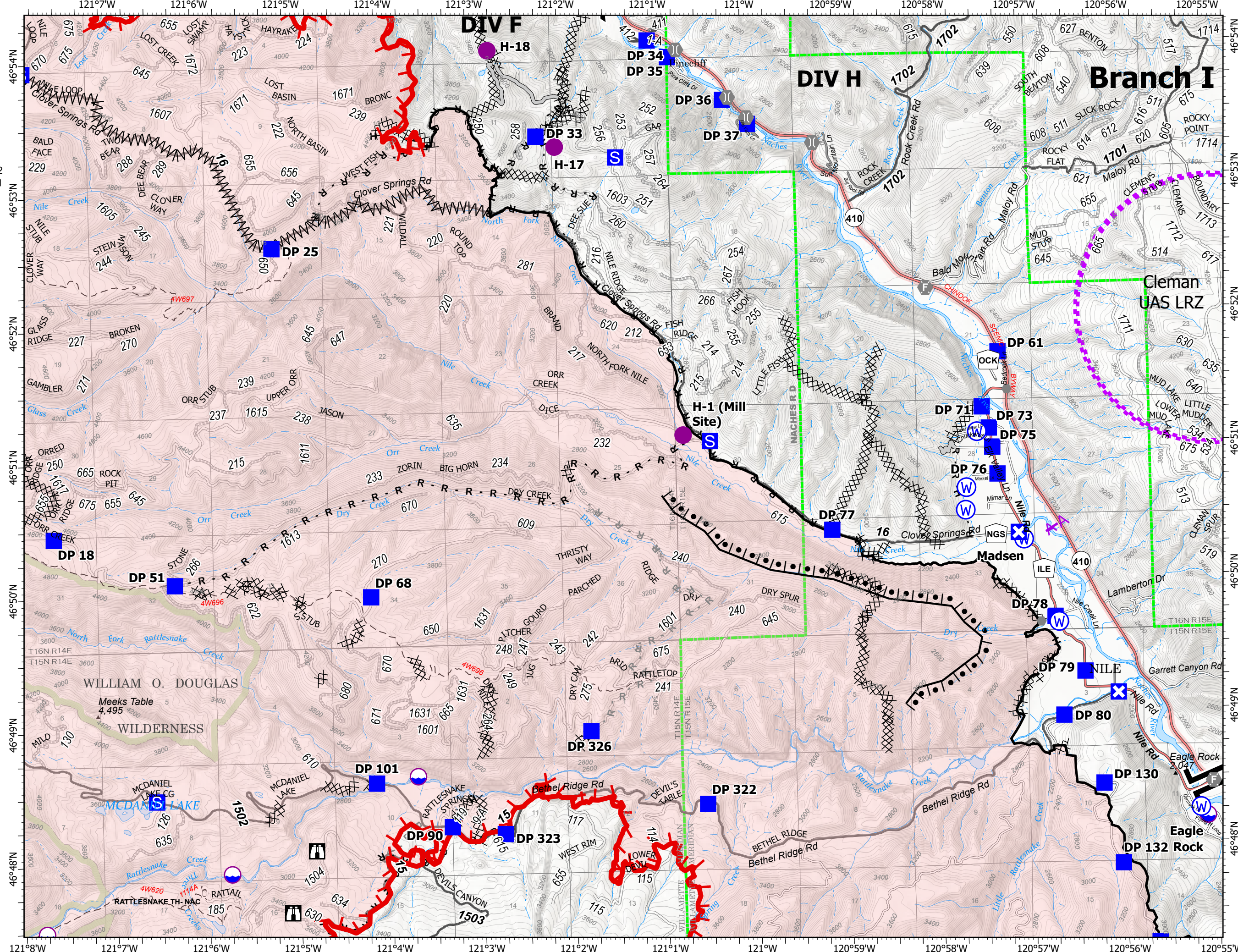
Page 3 of 10



- Dip Site
- Helispot
- Division Break
- Branch Break
- Drop Point
- Closure
- Staging Area
- Lookout
- Other
- Fire Station
- Bridge
- Water Source
- Completed Burnout
- Completed Dozer Line
- Completed Fuel Break
- Completed Hand Line
- Completed Mixed Construction Line
- Completed Road as Line
- Planned Road as Line
- Access or Improved Road
- Aerial Hazard
- UAS Launch and Recovery Zone
- Fire Edge
- Contained Line
- Administrative FS Boundary
- FS Wilderness Boundary
- Wildfire Daily Fire Perimeter



9/4/2021 2133  
Acres from IR  
North American 1983 Datum.  
Lat/Long Grid



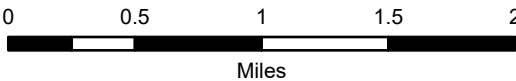
# IAP Map

Schneider Springs  
WA-OWF-000453

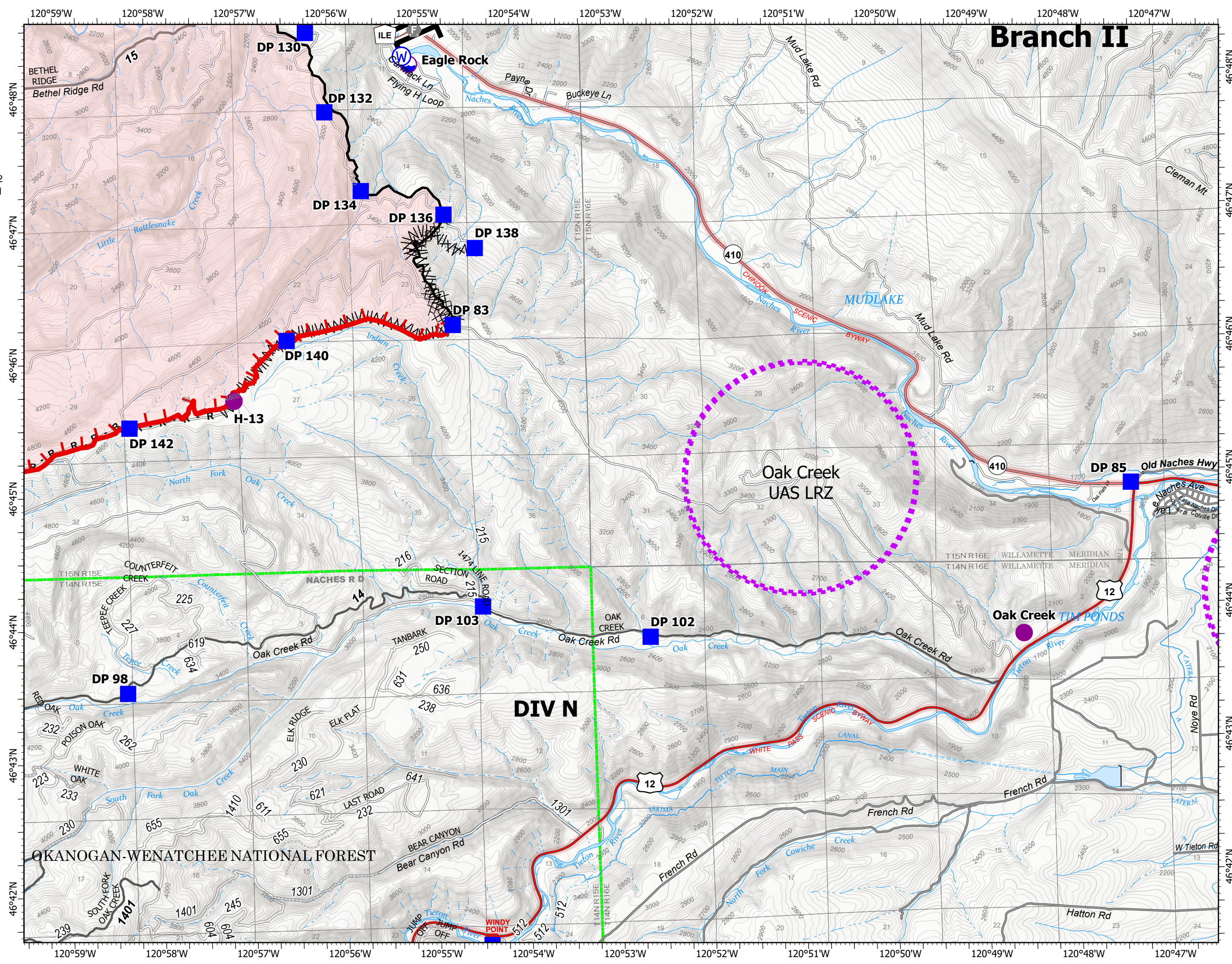
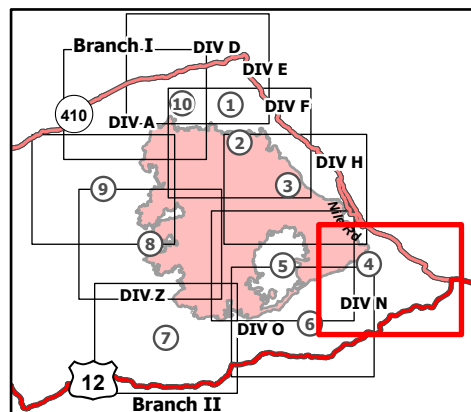
9/5/21

88,353 acres at 9/3/21 1830

Page 4 of 10



- Dip Site
- Helispot
- Branch Break
- Drop Point
- Fire Station
- Water Source
- Completed Dozer Line
- Completed Fuel Break
- Completed Road as Line
- UAS Launch and Recovery Zone
- Fire Edge
- Contained Line
- Administrative FS Boundary
- Wildfire Daily Fire Perimeter



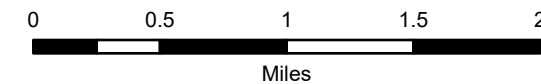
# IAP Map

Schneider Springs  
WA-OWF-000453

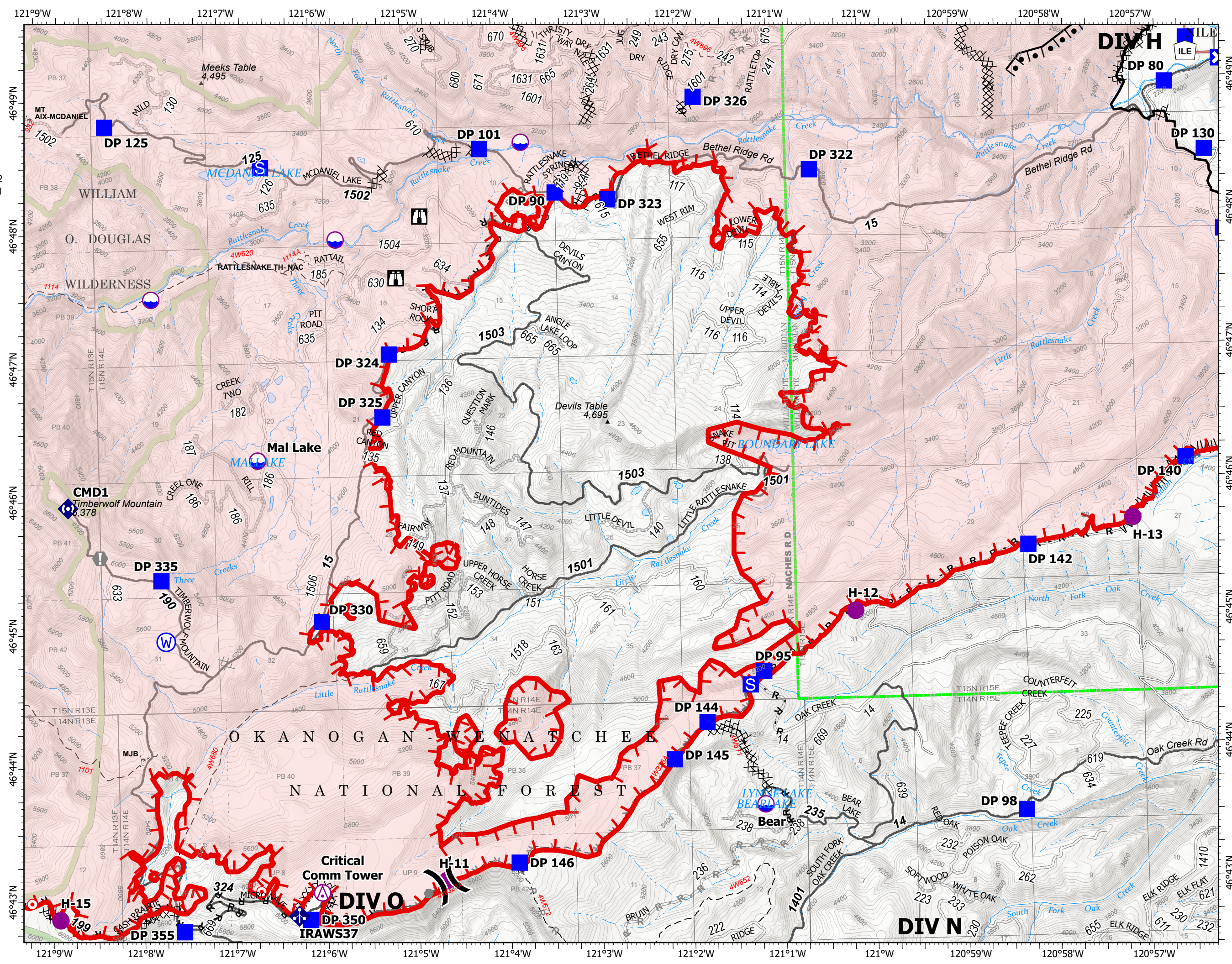
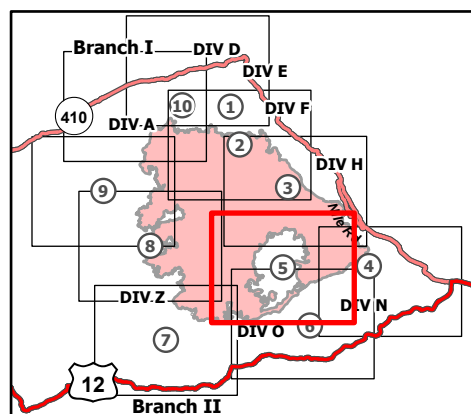
9/5/21

88,353 acres at 9/3/21 1830

Page 5 of 10



- Aerial Hazard
- Dip Site
- Helispot
- Division Break
- Drop Point
- Closure
- Staging Area
- Lookout
- Hot Spot - Spot Fire
- Value at Risk
- Other
- Mobile Weather Unit
- Repeater
- Water Source
- Completed Burnout
- Completed Dozer Line
- Completed Fuel Break
- Completed Hand Line
- Completed Road as Line
- Planned Dozer Line
- Planned Road as Line
- Other
- Fire Edge
- Contained Line
- Administrative FS Boundary
- FS Wilderness Boundary
- Wildfire Daily Fire Perimeter



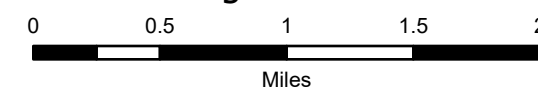
# IAP Map

Schneider Springs  
WA-OWF-000453

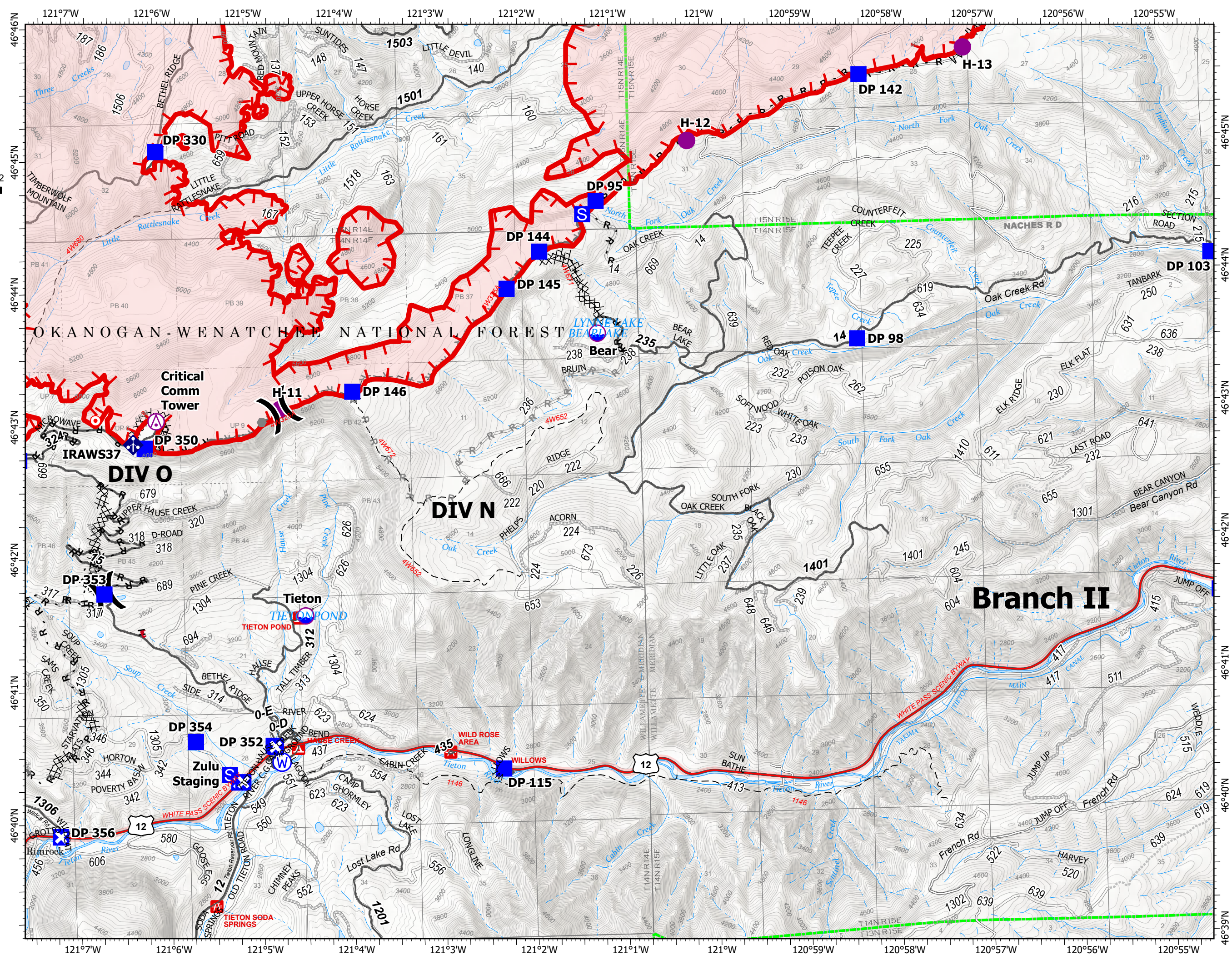
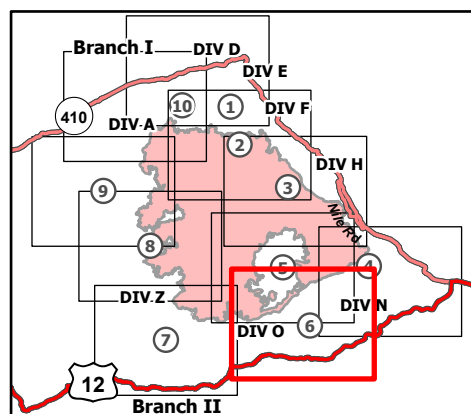
9/5/21

88,353 acres at 9/3/21 1830

Page 6 of 10



- Aerial Hazard
- Dip Site
- Helispot
- Division Break
- Drop Point
- Closure
- Staging Area
- Hot Spot - Spot Fire
- Other
- Mobile Weather Unit
- Water Source
- Completed Dozer Line
- Completed Fuel Break
- Completed Hand Line
- Completed Road as Line
- Planned Dozer Line
- Planned Hand Line
- Planned Road as Line
- Fence
- Other
- Fire Edge
- Administrative FS Boundary
- Wildfire Daily Fire Perimeter



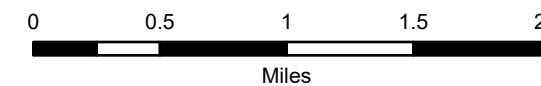
# IAP Map

Schneider Springs  
WA-OWF-000453

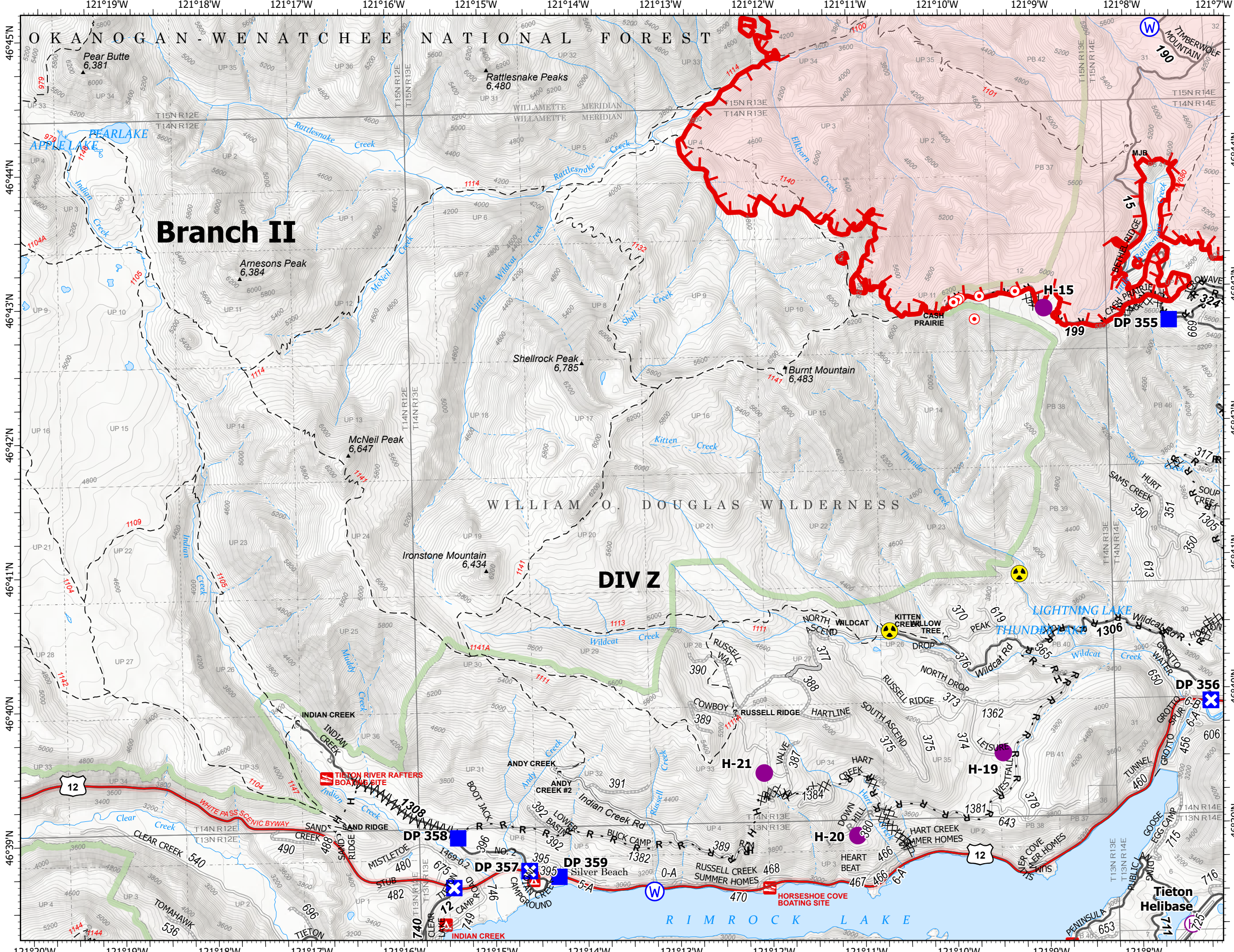
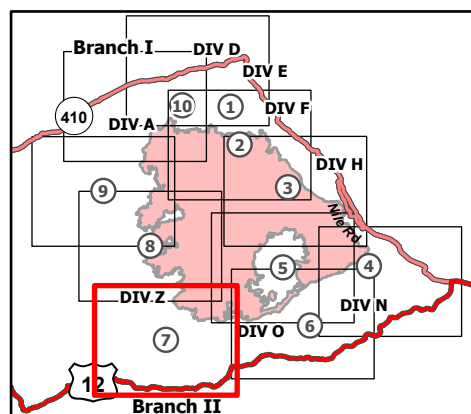
9/5/21

88,353 acres at 9/3/21 1830

Page 7 of 10



- Helispot
- ⊕ Helibase
- ) ( Division Break
- Drop Point
- ⊠ Closure
- ⊙ Hot Spot - Spot Fire
- ☠ Hazard
- ⊙ Water Source
- ⊗⊗ Completed Dozer Line
- ⊗⊗ Completed Fuel Break
- H - Completed Hand Line
- R - Completed Road as Line
- ⊗⊗ Planned Dozer Line
- R - Planned Road as Line
- Access or Improved Road
- - - Other
- ┌ Fire Edge
- ▭ Administrative FS Boundary
- ▭ FS Wilderness Boundary
- ▭ Wildfire Daily Fire Perimeter





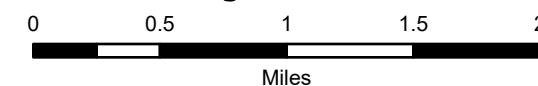
# IAP Map

Schneider Springs  
WA-OWF-000453

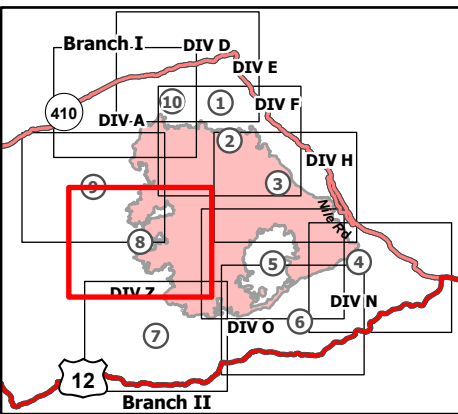
9/5/21

88,353 acres at 9/3/21 1830

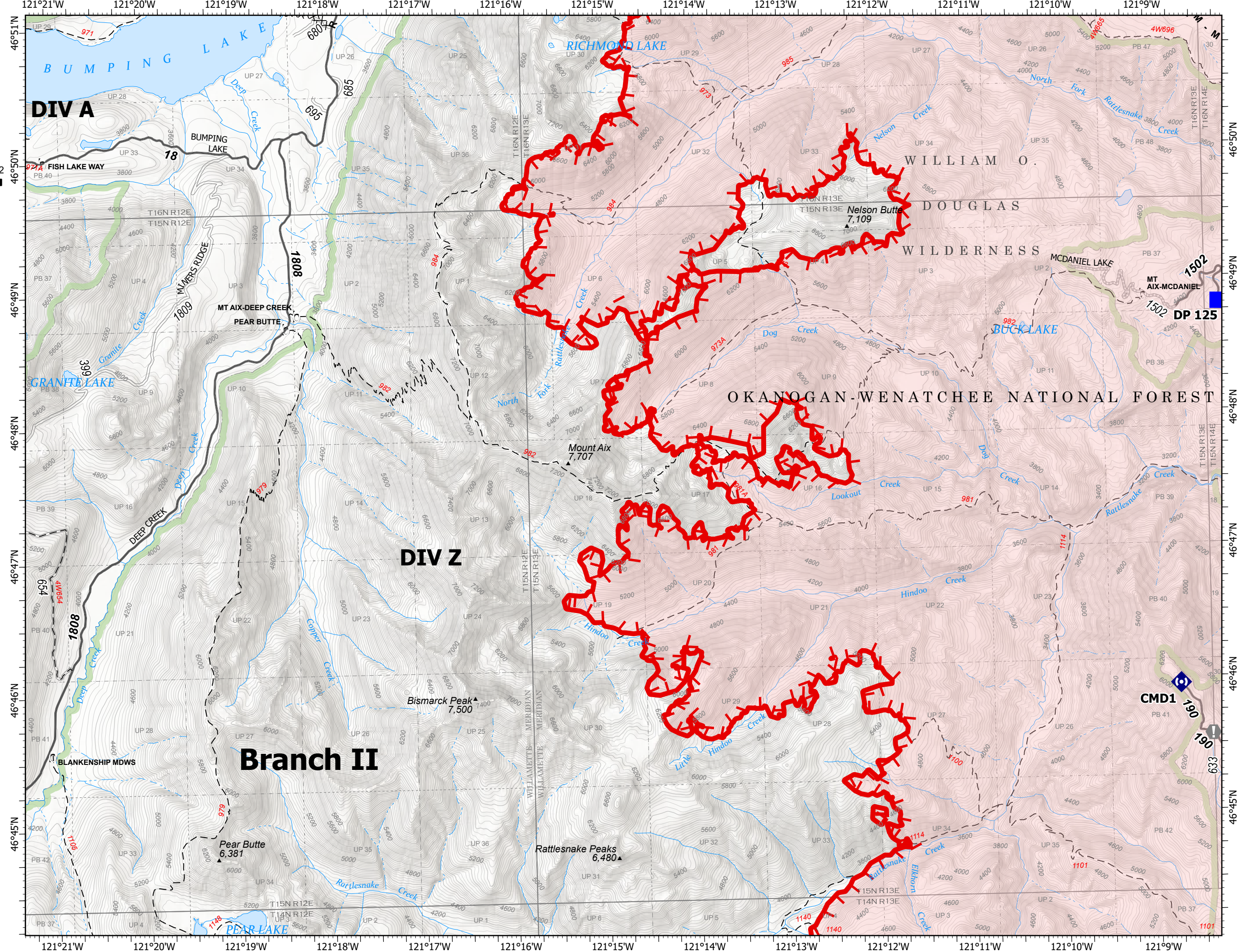
Page 8 of 10



- Drop Point
- Value at Risk
- Repeater
- Completed Dozer Line
- Completed Mixed Construction Line
- Completed Road as Line
- Planned Hand Line
- Fire Edge
- Administrative FS Boundary
- FS Wilderness Boundary
- Wildfire Daily Fire Perimeter



9/4/2021 2135  
Acres from IR  
North American 1983 Datum.  
Lat/Long Grid



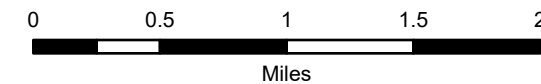
# IAP Map

Schneider Springs  
WA-OWF-000453

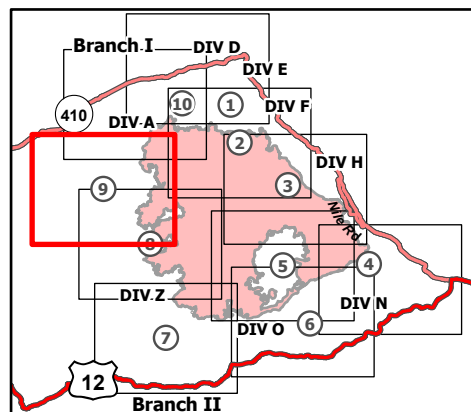
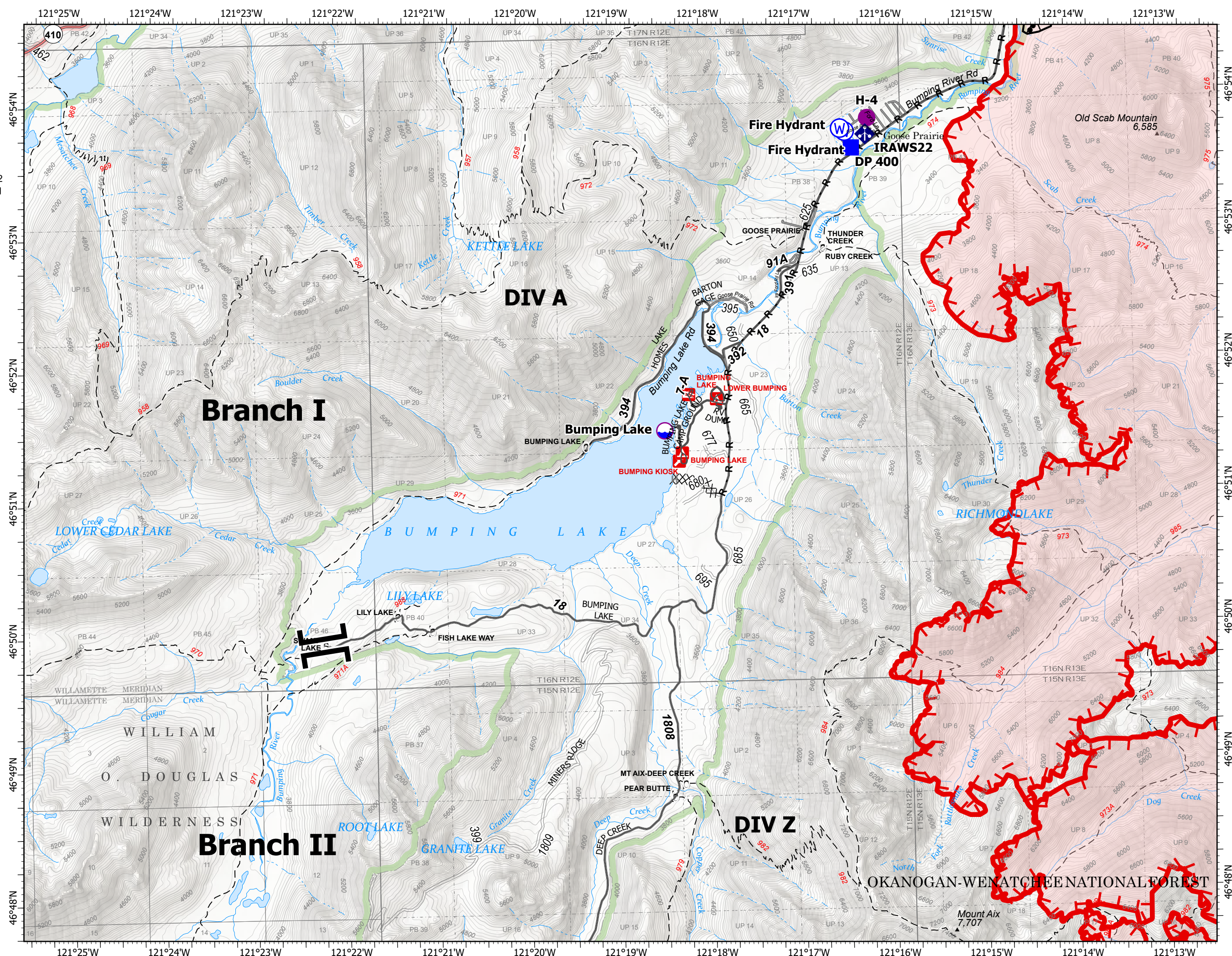
9/5/21

88,353 acres at 9/3/21 1830

Page 9 of 10



- Dip Site
- Helispot
- Branch Break
- Drop Point
- Mobile Weather Unit
- Water Source
- Completed Burnout
- Completed Dozer Line
- Completed Road as Line
- Planned Hand Line
- Fire Edge
- Contained Line
- Administrative FS Boundary
- FS Wilderness Boundary
- Wildfire Daily Fire Perimeter



9/4/2021 2135  
Acres from IR  
North American 1983 Datum.  
Lat/Long Grid



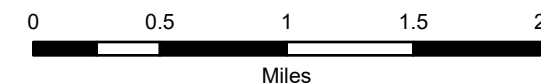
# IAP Map

Schneider Springs  
WA-OWF-000453

9/5/21

88,353 acres at 9/3/21 1830

Page 10 of 10



- Dip Site
- Helispot
- Division Break
- Drop Point
- Closure
- Staging Area
- Lookout
- Value at Risk
- Bridge
- Mobile Weather Unit
- Water Source
- Completed Burnout
- Completed Hand Line
- Completed Road as Line
- Fire Edge
- Contained Line
- Administrative FS Boundary
- FS Wilderness Boundary
- Wildfire Daily Fire Perimeter

