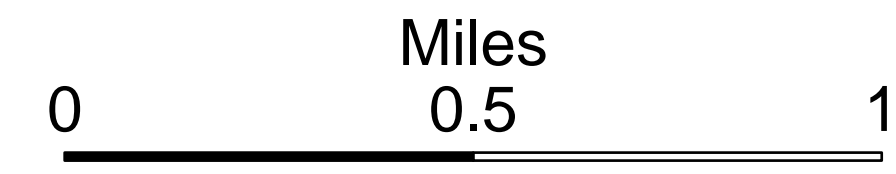


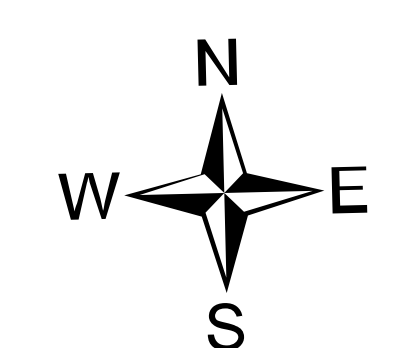
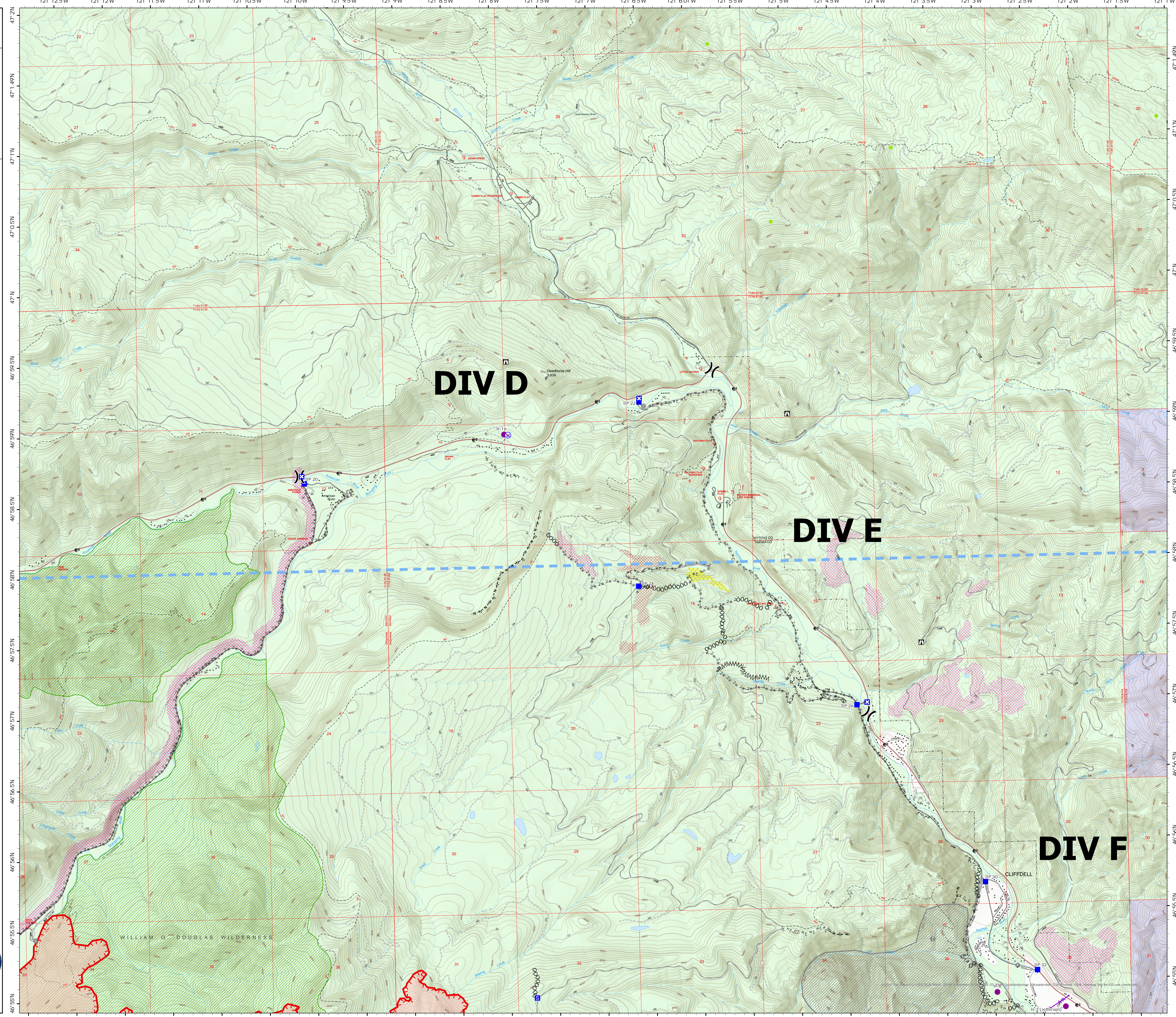
DIV D/E

Ops Map

Schneider Springs
WA-OWF-000453
Division Map Book
9/5/21
88,353 acres at 9/3/21 1830



- Helispot
- ⌋ Division Break
- Drop Point
- ⊠ Closure
- ⊠ Staging Area
- ⊠ Lookout
- ⊙ Value at Risk
- ⊙ Fire Station
- ⊙ Bridge
- ⊙ Restricted Water Source
- Completed Dozer Line
- MMW Completed Fuel Break
- H 2H 2 Completed Hand Line
- R 2R 2 Completed Road as Line
- H 2H 2 Planned Hand Line
- R 2R 2 Planned Road as Line
- Access or Improved Road
- ▲ Aerial Hazard
- ⊠ Temporary Flight Restriction
- Fire Edge
- N→ Natural Fuel Break
- Wildfire Daily Fire Perimeter
- Structures
- Whitebark Pine Trees
- 9 Campground
- ⊠ Group Campground
- 5 Picnic Site
- African Wiregrass
- ▨ Resource Concern
- ▨ Fire Fuels Treatments
- ▨ Mechanical Fuels Treatments
- ▨ Federal Wilderness Boundary
- ▨ Forest Service Land
- ▨ State Public Lands



PNW2
9/4/2021 2152
Acres from IR
North American 1983 Datum, Lat/Long
Grid

