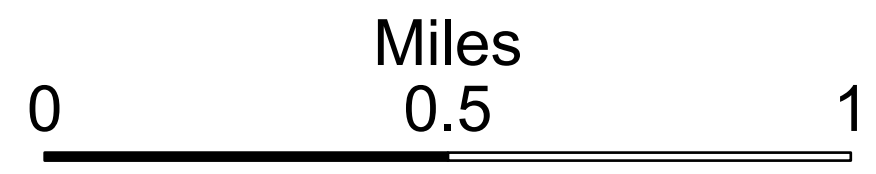
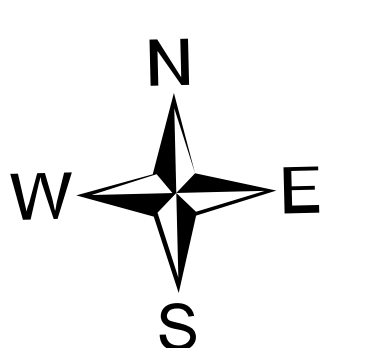
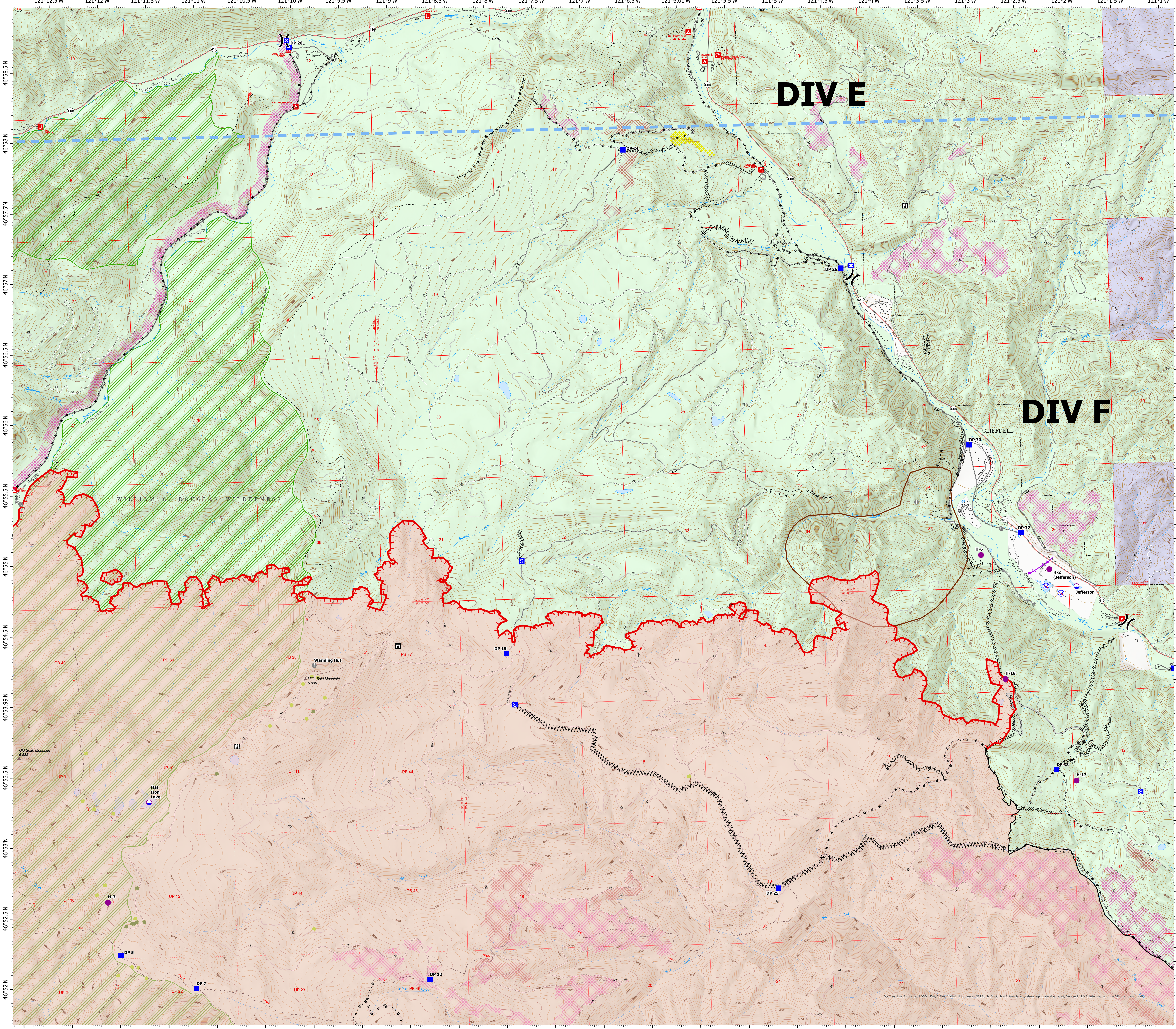


**DIV F**

**Ops Map**  
Schneider Springs  
WA-OWF-000453  
Division Map Book  
9/5/21  
89,885 acres at 9/4/21 1930



- Dip Site
- Helispot
- Division Break
- Drop Point
- Closure
- Staging Area
- Lookout
- Value at Risk
- Fire Station
- Bridge
- Restricted Water Source
- Completed Dozer Line
- Completed Fuel Break
- Completed Hand Line
- Completed Road as Line
- Planned Hand Line
- Planned Road as Line
- Access or Improved Road
- Aerial Hazard
- Temporary Flight Restriction
- Fire Edge
- Contained Line
- Natural Fuel Break
- Wildfire Daily Fire Perimeter
- Structures
- Seed Trees
- Whitebark Pine Trees
- Campground
- Group Campground
- Picnic Site
- African Wiregrass
- Resource Concern
- Fire Fuels Treatments
- Mechanical Fuels Treatments
- Federal Wilderness Boundary
- Forest Service Land
- State Public Lands



PNW2  
9/5/2021 1002  
Acres from IR  
North American 1983 Datum, Lat/Long  
Grid



Software: Esri, Aerial, US, USGS, NGA, NASA, CGAR, N. Robinson, NCEAS, NCS, US, NOAA, Geodatenzentrum, Rijkswaterstaal, GSA, Geodaten, FEMA, Intermap and the GIS user community