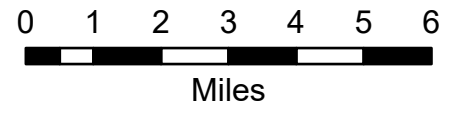


IAP Map Index

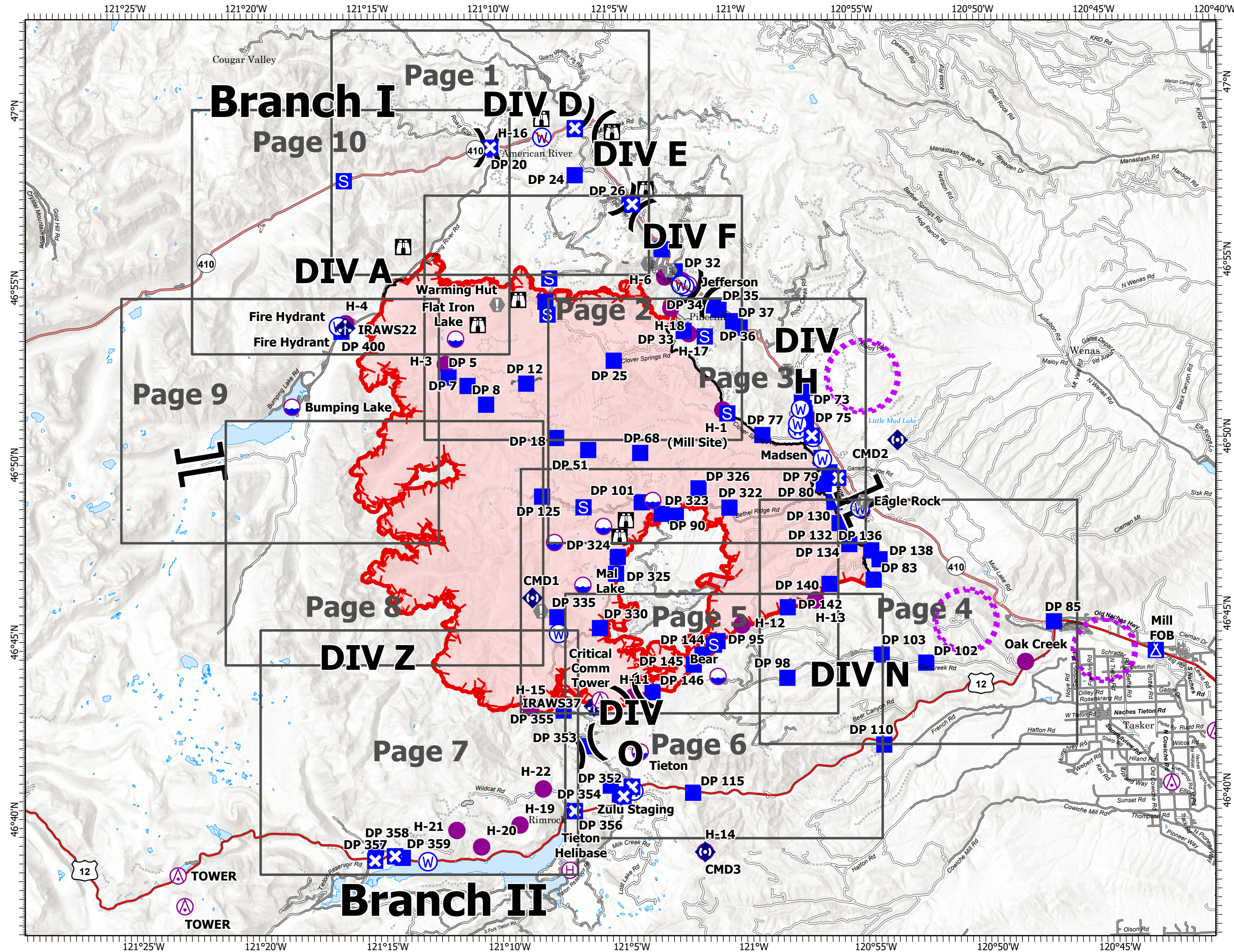
Schneider Springs
WA-OWF-000453

9/6/21

89,885 acres at 9/4/21 1930



- Aerial Hazard
- Dip Site
- Helispot
- Helibase
- Division Break
- Branch Break
- Drop Point
- Closure
- Camp
- Staging Area
- Lookout
- Value at Risk
- Fire Station
- Mobile Weather Unit
- Repeater
- Water Source
- Restricted Water Source
- Access or Improved Road
- Fence
- Other
- Aerial Hazard
- UAS Launch and Recovery Zone
- Fire Edge
- Contained Line
- Wildfire Daily Fire Perimeter
- Grid Index



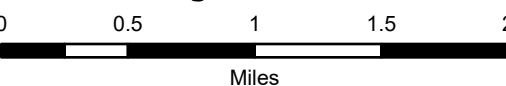
IAP Map

Schneider Springs
WA-OWF-000453

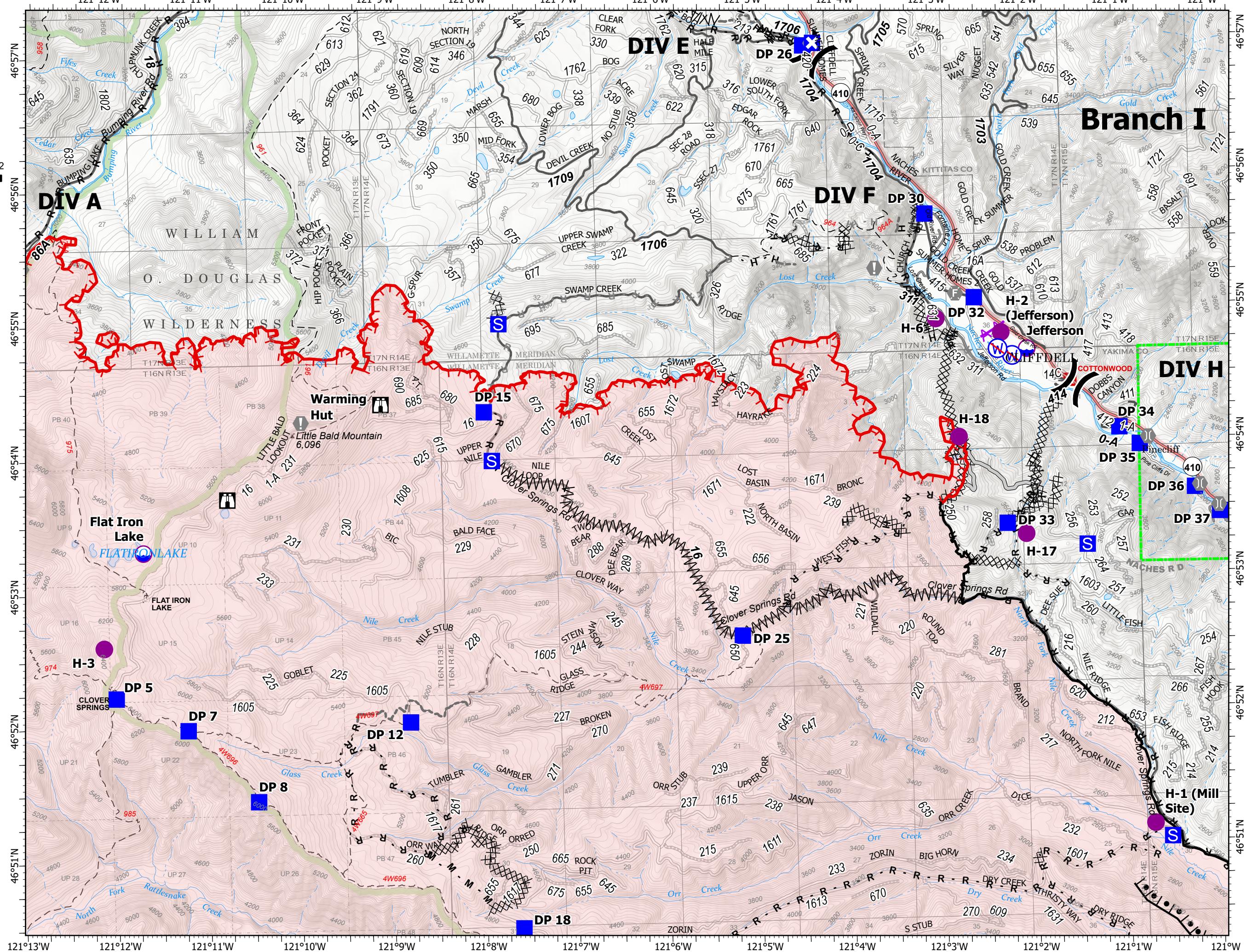
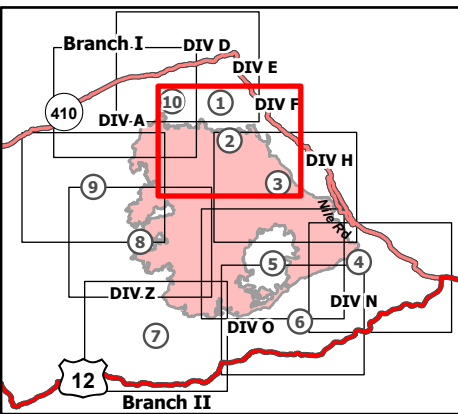
9/6/21

89,885 acres at 9/4/21 1930

Page 2 of 10



- Dip Site
- Helispot
- Division Break
- Drop Point
- Closure
- Staging Area
- Lookout
- Value at Risk
- Fire Station
- Bridge
- Restricted Water Source
- Completed Burnout
- Completed Dozer Line
- Completed Fuel Break
- Completed Hand Line
- Completed Mixed Construction Line
- Completed Road as Line
- Planned Hand Line
- Planned Road as Line
- Access or Improved Road
- Other
- Aerial Hazard
- Fire Edge
- Contained Line
- Administrative FS Boundary
- FS Wilderness Boundary
- Wildfire Daily Fire Perimeter



IAP Map

Schneider Springs
WA-OWF-000453

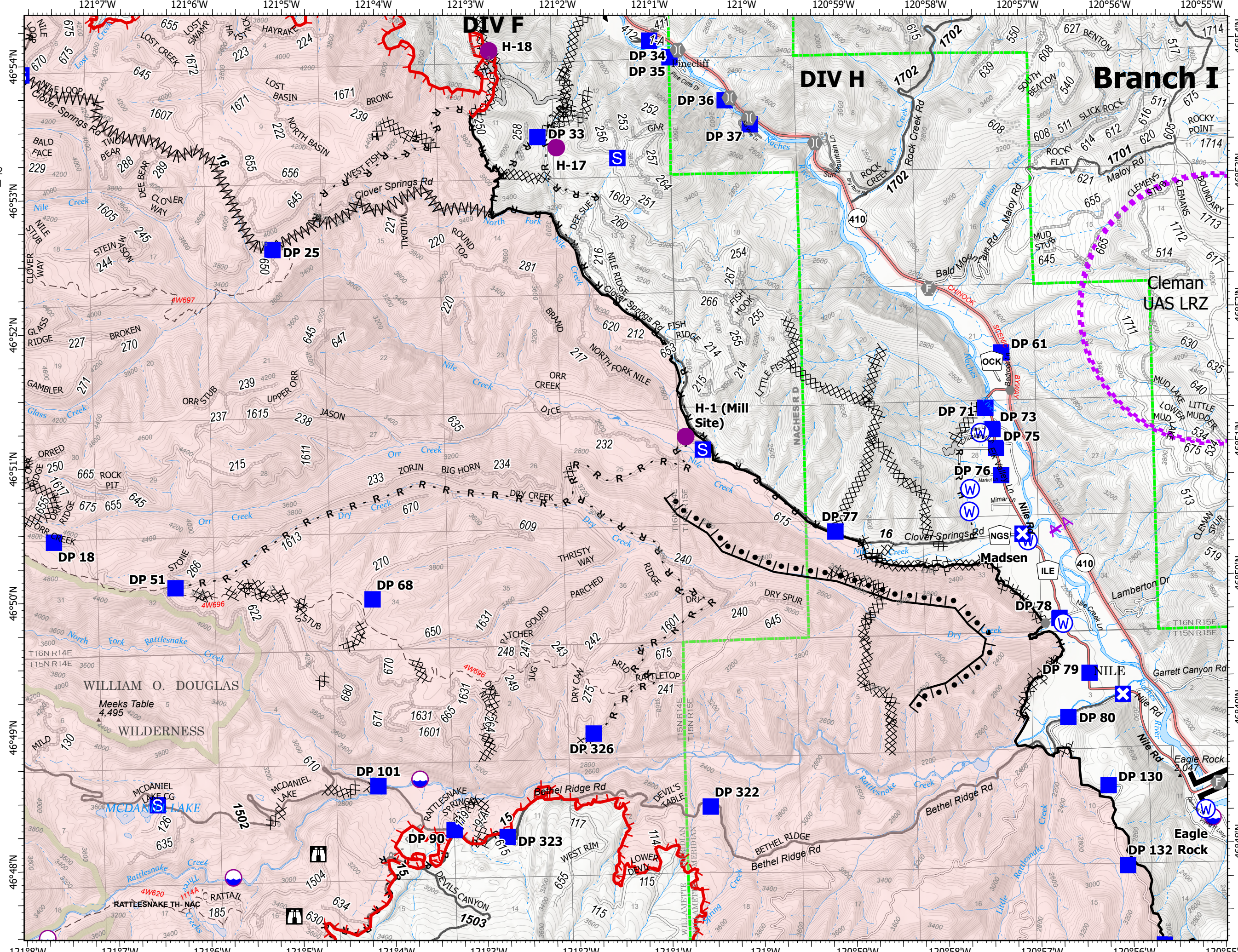
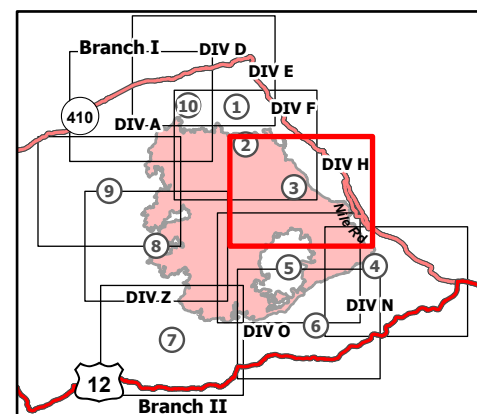
9/6/21

89,885 acres at 9/4/21 1930

Page 3 of 10



- Dip Site
- Helispot
- X Division Break
- || Branch Break
- Drop Point
- ⊠ Closure
- Staging Area
- ⏏ Lookout
- Other
- ⦿ Fire Station
- ⌒ Bridge
- ⊙ Water Source
- Completed Burnout
- XX Completed Dozer Line
- ∩ Completed Fuel Break
- H Completed Hand Line
- M Completed Mixed Construction Line
- R Completed Road as Line
- R Planned Road as Line
- Access or Improved Road
- ⚡ Aerial Hazard
- UAS Launch and Recovery Zone
- Fire Edge
- Contained Line
- Administrative FS Boundary
- FS Wilderness Boundary
- Wildfire Daily Fire Perimeter



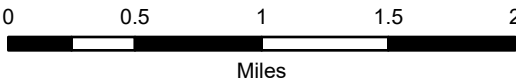
IAP Map

Schneider Springs
WA-OWF-000453

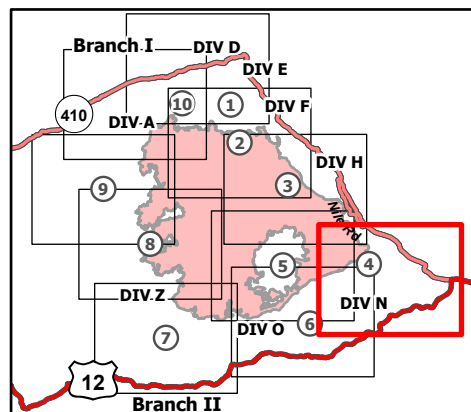
9/6/21

89,885 acres at 9/4/21 1930

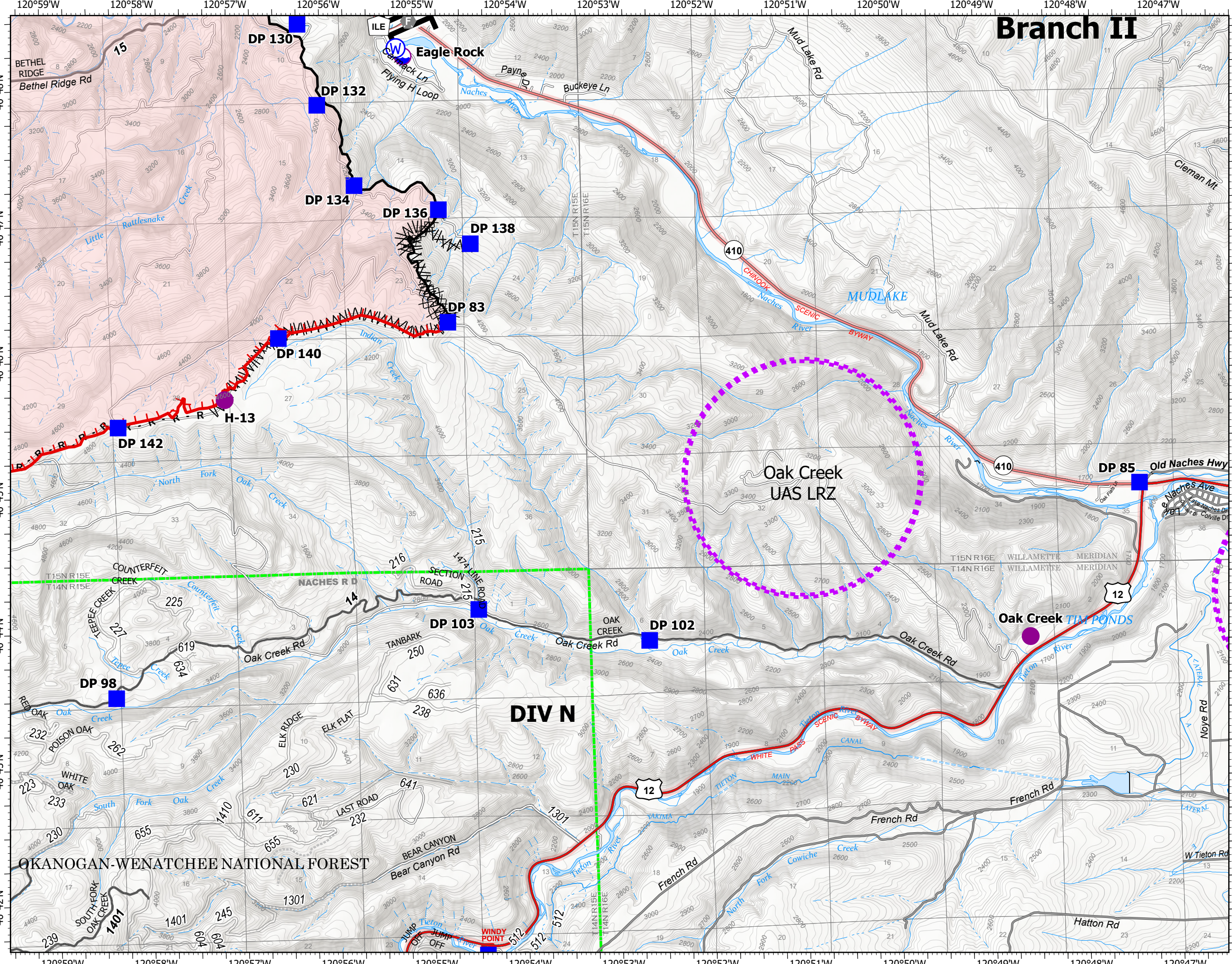
Page 4 of 10



- Dip Site
- Helispot
- Branch Break
- Drop Point
- Fire Station
- Water Source
- Completed Dozer Line
- Completed Fuel Break
- Completed Road as Line
- UAS Launch and Recovery Zone
- Fire Edge
- Contained Line
- Administrative FS Boundary
- Wildfire Daily Fire Perimeter



9/5/2021 2120
Acres from IR
North American 1983 Datum.
Lat/Long Grid



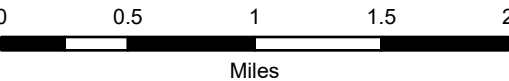
IAP Map

Schneider Springs
WA-OWF-000453

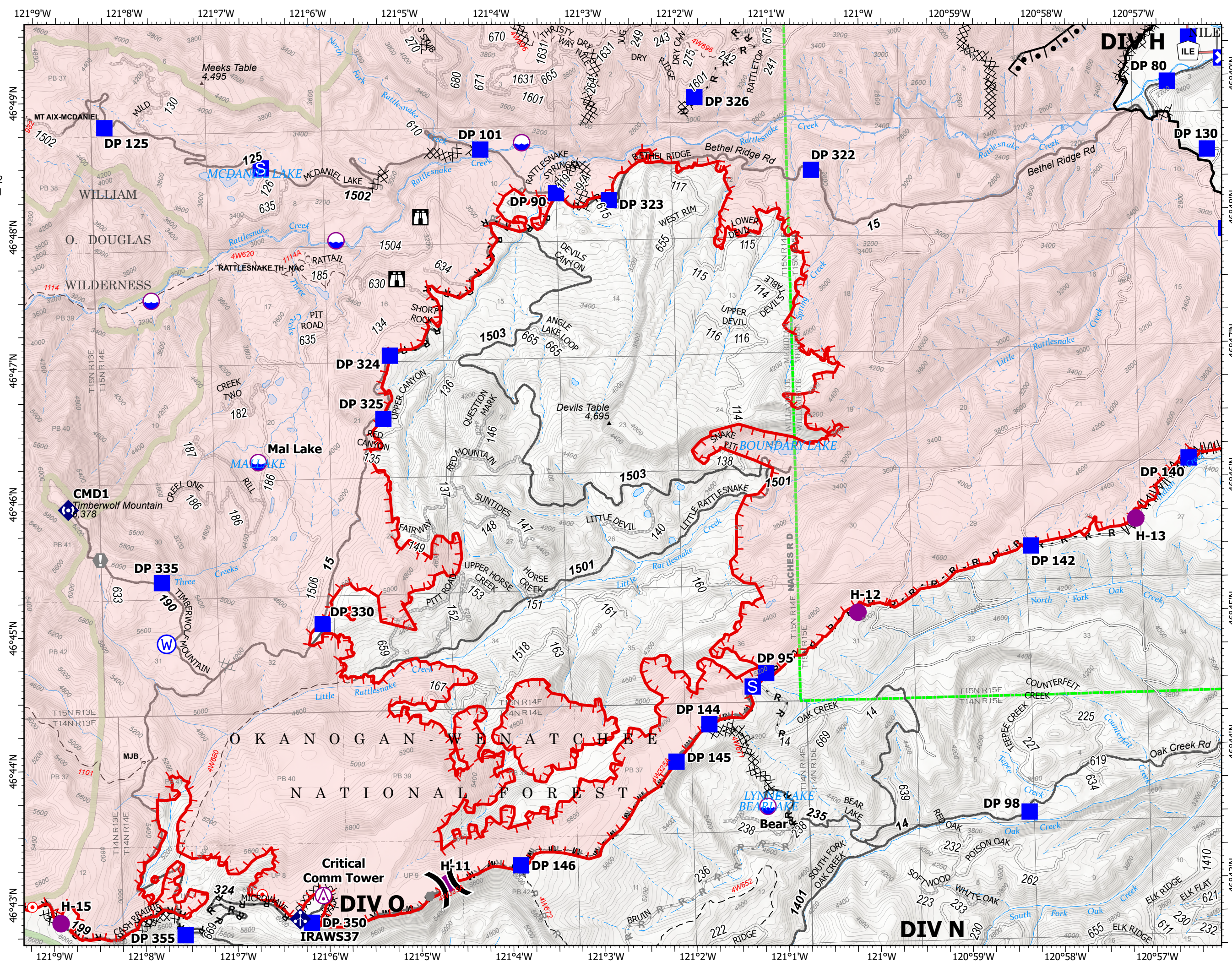
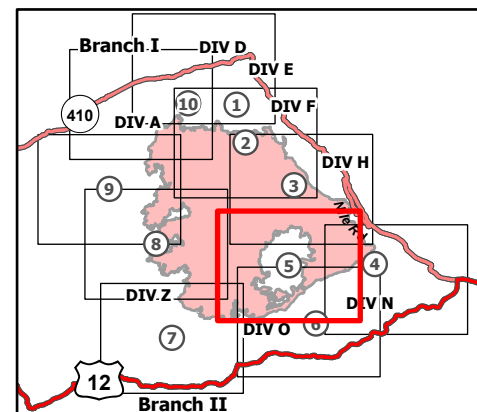
9/6/21

89,885 acres at 9/4/21 1930

Page 5 of 10



- Aerial Hazard
- Dip Site
- Helispot
- Division Break
- Drop Point
- Closure
- Staging Area
- Lookout
- Hot Spot - Spot Fire
- Value at Risk
- Other
- Mobile Weather Unit
- Repeater
- Water Source
- Completed Burnout
- Completed Dozer Line
- Completed Fuel Break
- Completed Hand Line
- Completed Mixed Construction Line
- Completed Road as Line
- Planned Dozer Line
- Planned Road as Line
- Other
- Fire Edge
- Contained Line
- Administrative FS Boundary
- FS Wilderness Boundary
- Wildfire Daily Fire Perimeter



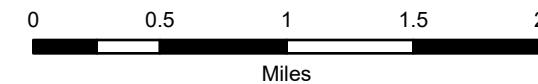
IAP Map

Schneider Springs
WA-OWF-000453

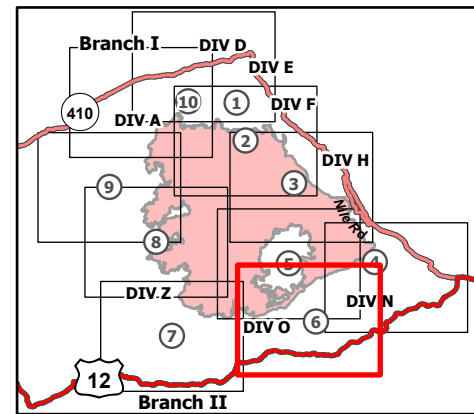
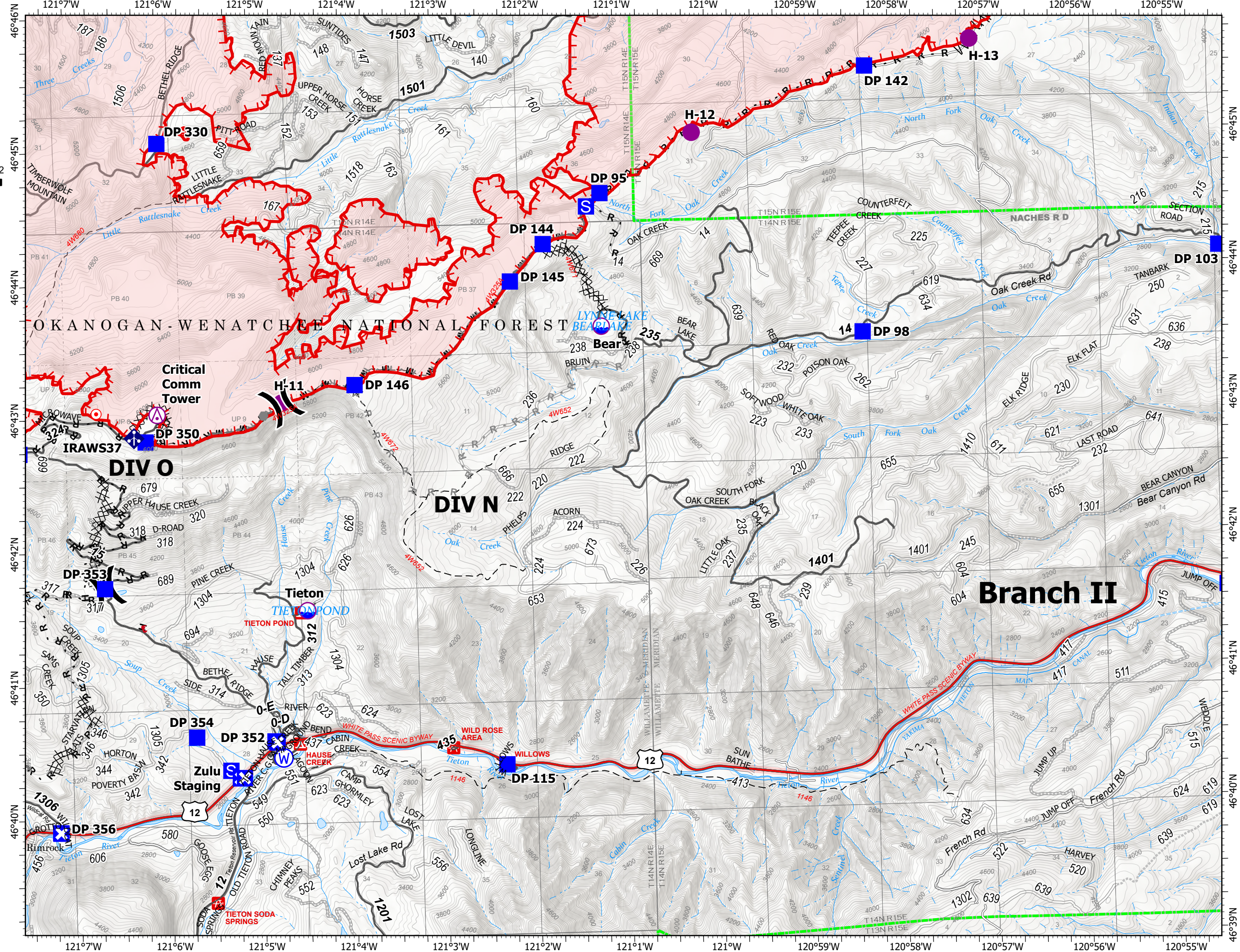
9/6/21

89,885 acres at 9/4/21 1930

Page 6 of 10



- Aerial Hazard
- Dip Site
- Helispot
- Division Break
- Drop Point
- Closure
- Staging Area
- Hot Spot - Spot Fire
- Other
- Mobile Weather Unit
- Water Source
- Completed Dozer Line
- Completed Fuel Break
- Completed Hand Line
- Completed Mixed Construction Line
- Completed Road as Line
- Planned Dozer Line
- Planned Hand Line
- Planned Road as Line
- Fence
- Other
- Fire Edge
- Administrative FS Boundary
- Wildfire Daily Fire Perimeter



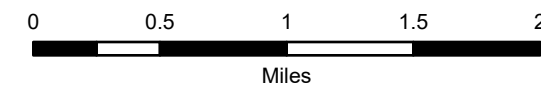
IAP Map

Schneider Springs
WA-OWF-000453

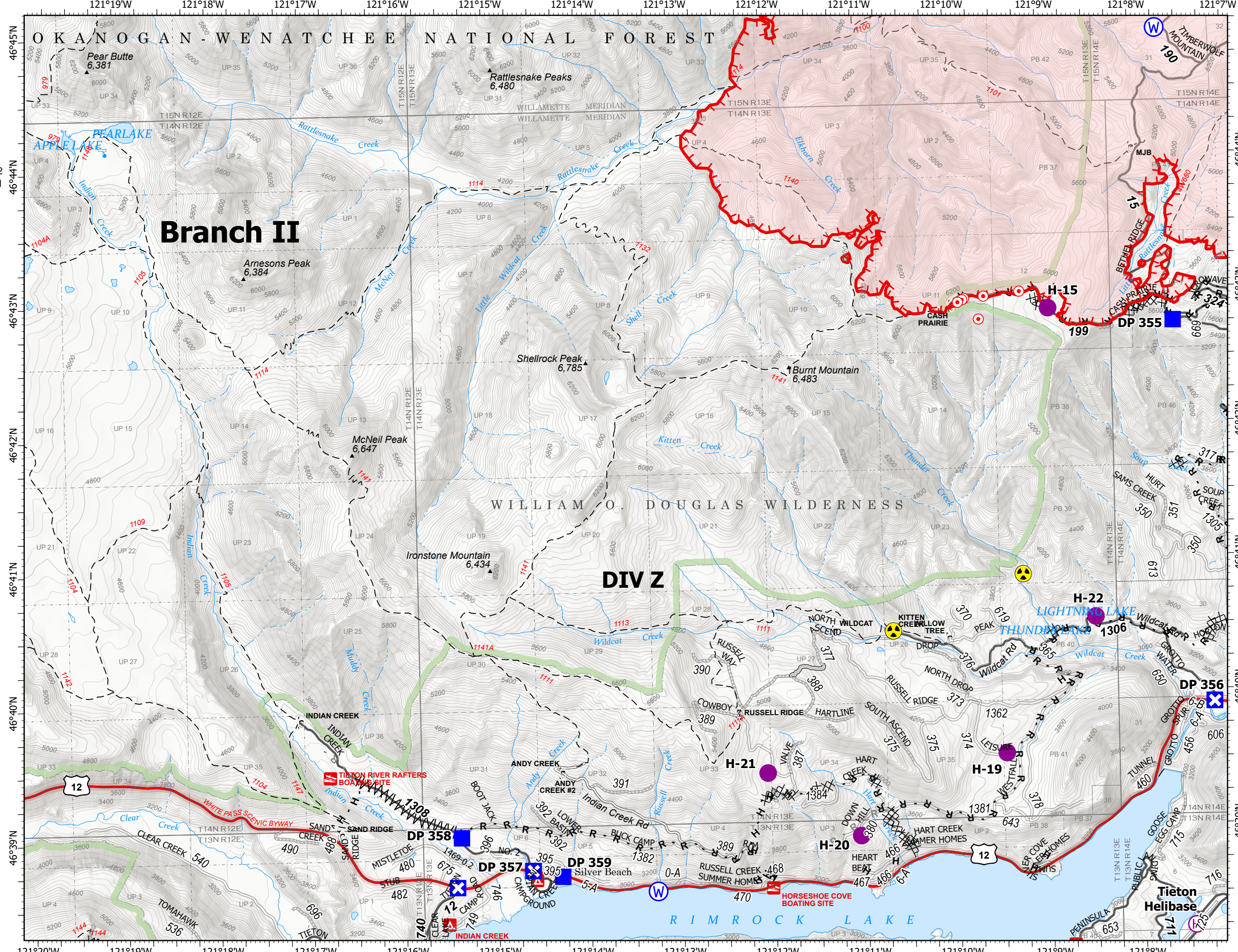
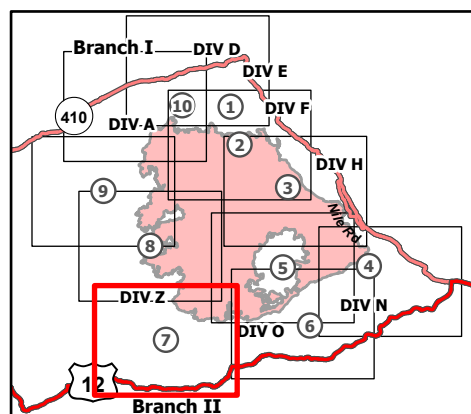
9/6/21

89,885 acres at 9/4/21 1930

Page 7 of 10



- Helispot
- ⊕ Helibase
-) Division Break
- Drop Point
- ⊠ Closure
- ⊙ Hot Spot - Spot Fire
- ☠ Hazard
- ⊙ Water Source
- ⊗⊗ Completed Dozer Line
- ⊗ Completed Fuel Break
- H Completed Hand Line
- R Completed Road as Line
- ⊗⊗ Planned Dozer Line
- R Planned Road as Line
- Access or Improved Road
- Other
- ┌ Fire Edge
- ▭ Administrative FS Boundary
- ▭ FS Wilderness Boundary
- ▭ Wildfire Daily Fire Perimeter



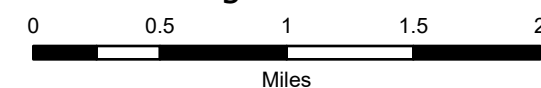
IAP Map

Schneider Springs
WA-OWF-000453

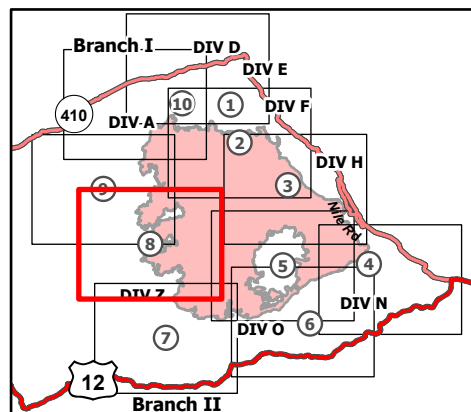
9/6/21

89,885 acres at 9/4/21 1930

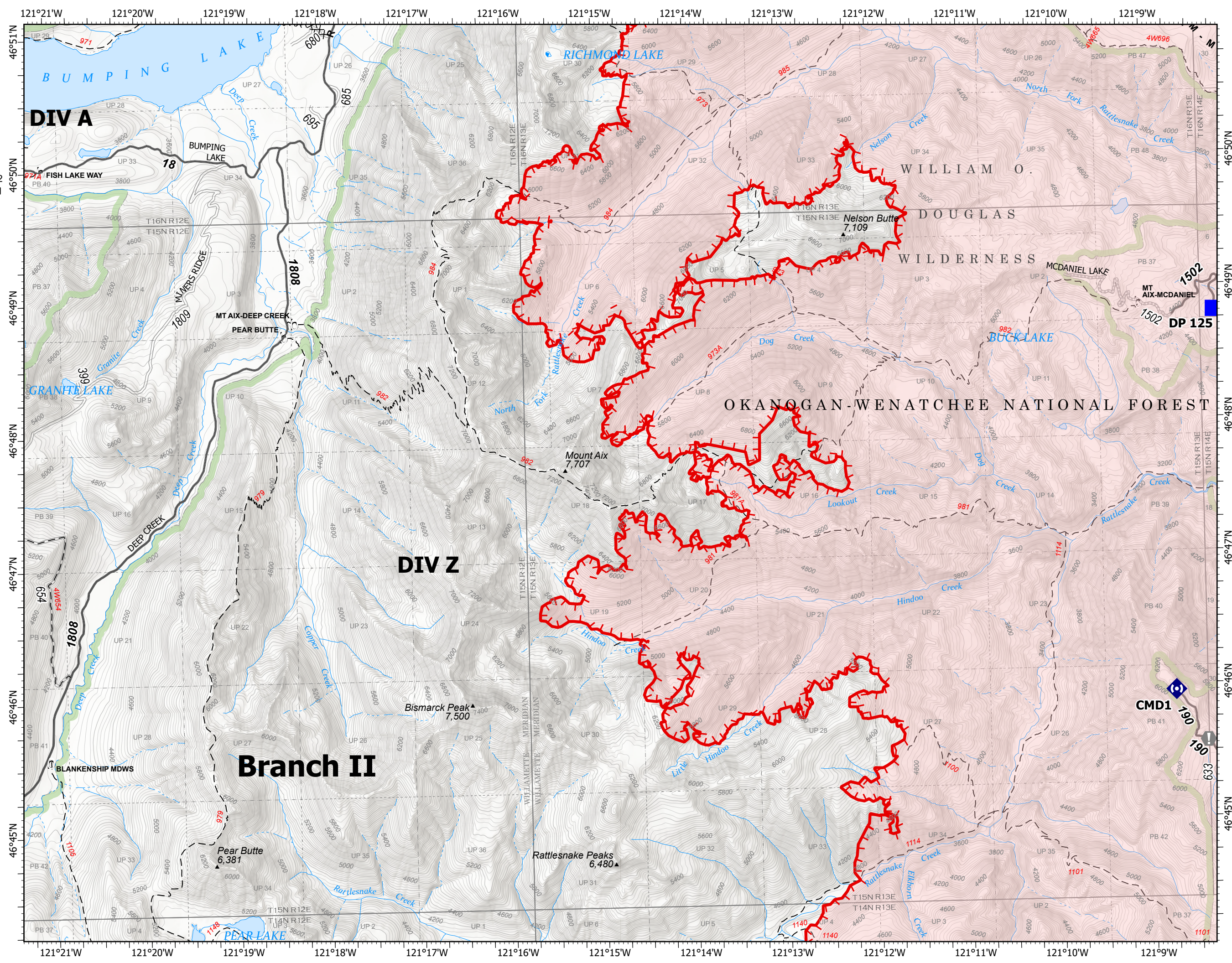
Page 8 of 10



- Drop Point
- Value at Risk
- Repeater
- Completed Dozer Line
- Completed Mixed Construction Line
- Completed Road as Line
- Planned Hand Line
- Fire Edge
- Administrative FS Boundary
- FS Wilderness Boundary
- Wildfire Daily Fire Perimeter



9/5/2021 2121
Acres from IR
North American 1983 Datum.
Lat/Long Grid



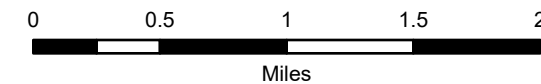
IAP Map

Schneider Springs
WA-OWF-000453

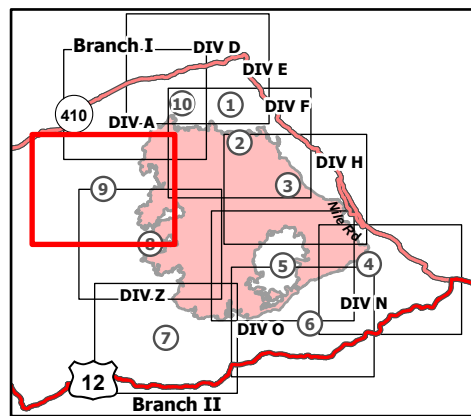
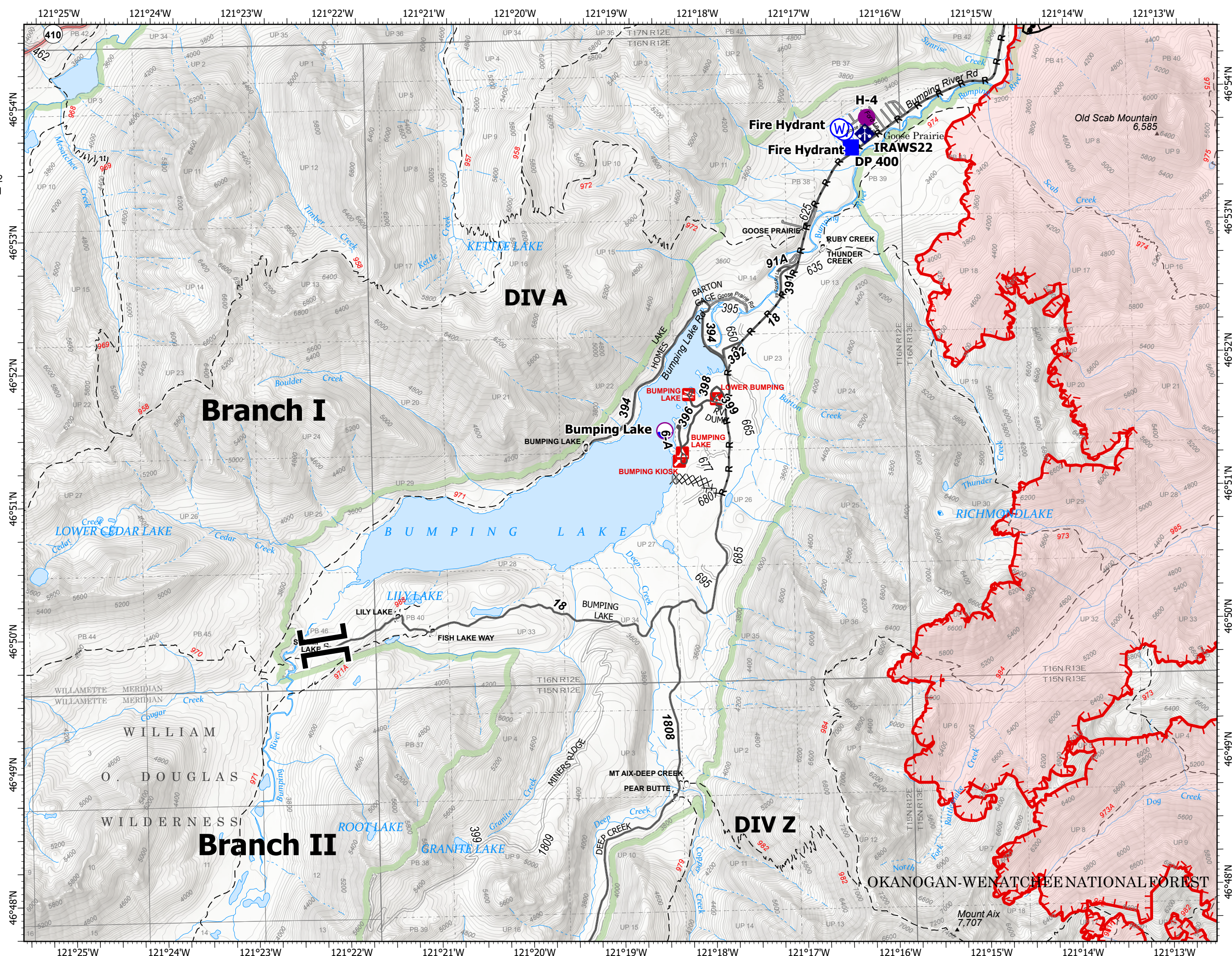
9/6/21

89,885 acres at 9/4/21 1930

Page 9 of 10



- Dip Site
- Helispot
- Branch Break
- Drop Point
- Mobile Weather Unit
- Water Source
- Completed Burnout
- Completed Dozer Line
- Completed Road as Line
- Planned Hand Line
- Fire Edge
- Contained Line
- Administrative FS Boundary
- FS Wilderness Boundary
- Wildfire Daily Fire Perimeter



9/5/2021 2121
Acres from IR
North American 1983 Datum.
Lat/Long Grid



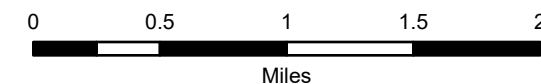
IAP Map

Schneider Springs
WA-OWF-000453

9/6/21

89,885 acres at 9/4/21 1930

Page 10 of 10



- Dip Site
- Helispot
- Division Break
- Drop Point
- Closure
- Staging Area
- Lookout
- Value at Risk
- Bridge
- Mobile Weather Unit
- Water Source
- Completed Burnout
- Completed Hand Line
- Completed Road as Line
- Fire Edge
- Contained Line
- Administrative FS Boundary
- FS Wilderness Boundary
- Wildfire Daily Fire Perimeter

