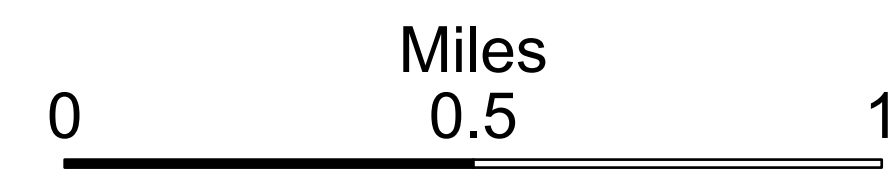


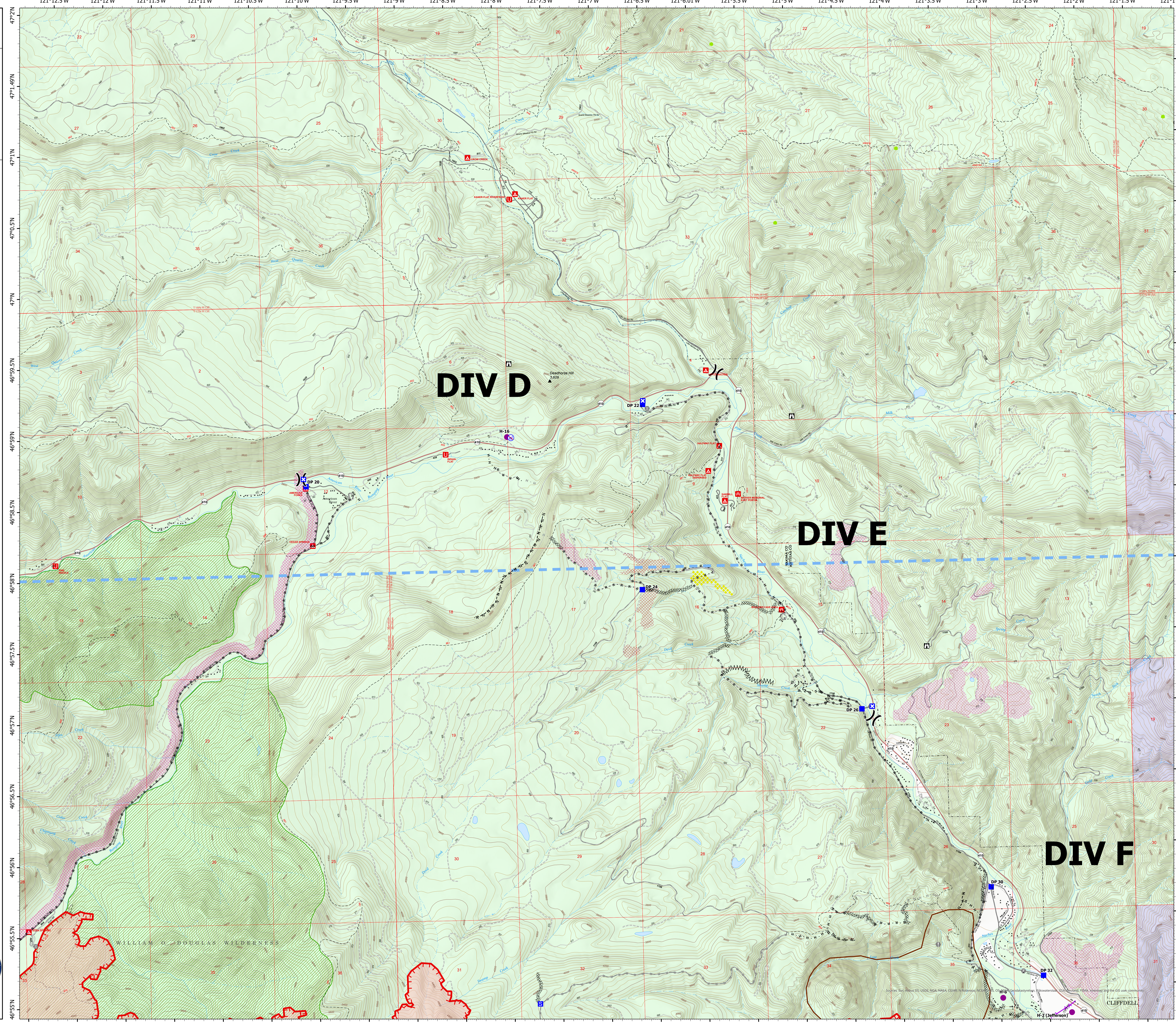
# DIV D/E

## Ops Map

Schneider Springs  
WA-OWF-000453  
Division Map Book  
9/6/21  
89,885 acres at 9/4/21 1930



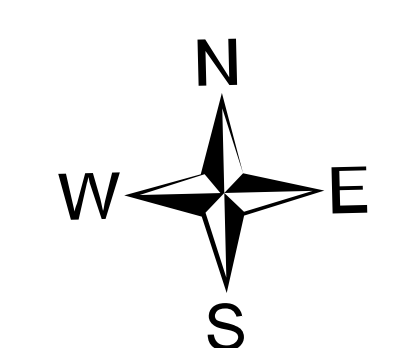
- Helispot
- ⌋ Division Break
- Drop Point
- ⊠ Closure
- ⊠ Staging Area
- ⊠ Lookout
- ⊙ Value at Risk
- ⊙ Fire Station
- ⊙ Bridge
- ⊙ Restricted Water Source
- ⊠ Completed Dozer Line
- ⊠ Completed Fuel Break
- ⊠ Completed Hand Line
- ⊠ Completed Road as Line
- ⊠ Planned Hand Line
- ⊠ Planned Road as Line
- Access or Improved Road
- ⚡ Aerial Hazard
- ⊠ Temporary Flight Restriction
- Fire Edge
- ⊠ Natural Fuel Break
- ⊠ Wildfire Daily Fire Perimeter
- Structures
- Whitebark Pine Trees
- ▲ Campground
- ⊠ Group Campground
- ⊠ Picnic Site
- African Wiregrass
- ⊠ Resource Concern
- ⊠ Fire Fuels Treatments
- ⊠ Mechanical Fuels Treatments
- ⊠ Federal Wilderness Boundary
- ⊠ Forest Service Land
- ⊠ State Public Lands



# DIV D

# DIV E

# DIV F



PNW2  
9/5/2021 2210  
Acres from IR  
North American 1983 Datum, Lat/Long  
Grid



Sources: The Alaska D5, USGS, NGA, NFAA, EDAP, NRS, and other sources. © 2021 National Incident Team. All rights reserved. FEMA, National Incident Team, and the USGS logo (combined).